

Respiratory Pathogens - Sep 14 2019

Week	InfA-H1	InfA-H3	2009 H1N1	Inf B	RSV	All Para	EV / Rhino	Meta pneumo	Adeno	All Corona	Bocca	Myc. pneumo	Chlam. pneumo.	Legionella pneumo.	BP/ BPP	Total Pos	POS FLU	Total	ACL %FLU	US %FLU	IL/W PCR	AAH PCR
Sep 14	0	1	1	0	1	5	110	1	7	1	2	0	1	0	3	133	2	1091	0.2	n/a	n/a	2.6
Sep 07	0	1	0	0	0	7	73	5	6	0	4	0	0	0	1	97	1	615	0.2	3.5	0.6	2.6
Aug 31	0	1	0	0	1	4	39	1	3	1	0	4	1	1	1	56	1	775	0.1	4.4	0	0
Aug 23	0	1	0	0	1	8	42	1	2	6	3	2	5	0	0	71	1	393	0.3	3.2	0.6	0.6
Aug 16	0	0	1	0	1	5	31	4	5	1	1	0	1	0	1	50	1	655	0.2	2.3	0.2	1.7
Aug 09	0	1	0	0	0	5	29	1	5	2	0	0	1	1	1	44	1	629	0.2	2.1	0.2	0.0
Aug 2	0	1	0	0	2	10	46	4	6	0	1	0	0		0	70	1	758	0.1	2.4	0.9	2.0
July 26	0	2	0	0	1	6	36	10	1	1	2	3	0		2	62	2	504	0.4	2.4	0.4	3.7
July 19	0	2	0	0	0	18	38	9	8	2	3	0	1		3	81	2	491	0.4	2.3	1.0	5.6
July 12	0	2	0	0	1	12	39	6	7	0	2	2	0		4	71	2	567	0.4	2.1	0.3	3.2
July 5	0	0	0	0	0	19	41	9	5	4	1	4	0		2	83	3	387	0.8	2.5	1.4	3.0
Jun 29	0	1	1	1	1	26	54	17	9	0	1	1	0		2	112	3	694	0.4	2.1	1.5	3.1
Jun 21	0	0	2	0	0	25	61	23	10	4	3	1	0		1	129	2	718	0.3	1.9	0.9	2.2
Jun 14	0	1	0	0	2	33	59	26	5	0	6	0	0		1	132	1	754	0.1	2.4	1.6	2.6
Jun 07	0	2	1	0	3	33	62	24	5	2	3	1	0		1	136	1	630	0.2	2.8	1.7	2.4
Jun 01	0	0	1	0	4	37	60	31	7	4	5	0	0		0	149	1	743	0.1	3.1	2.1	2.6

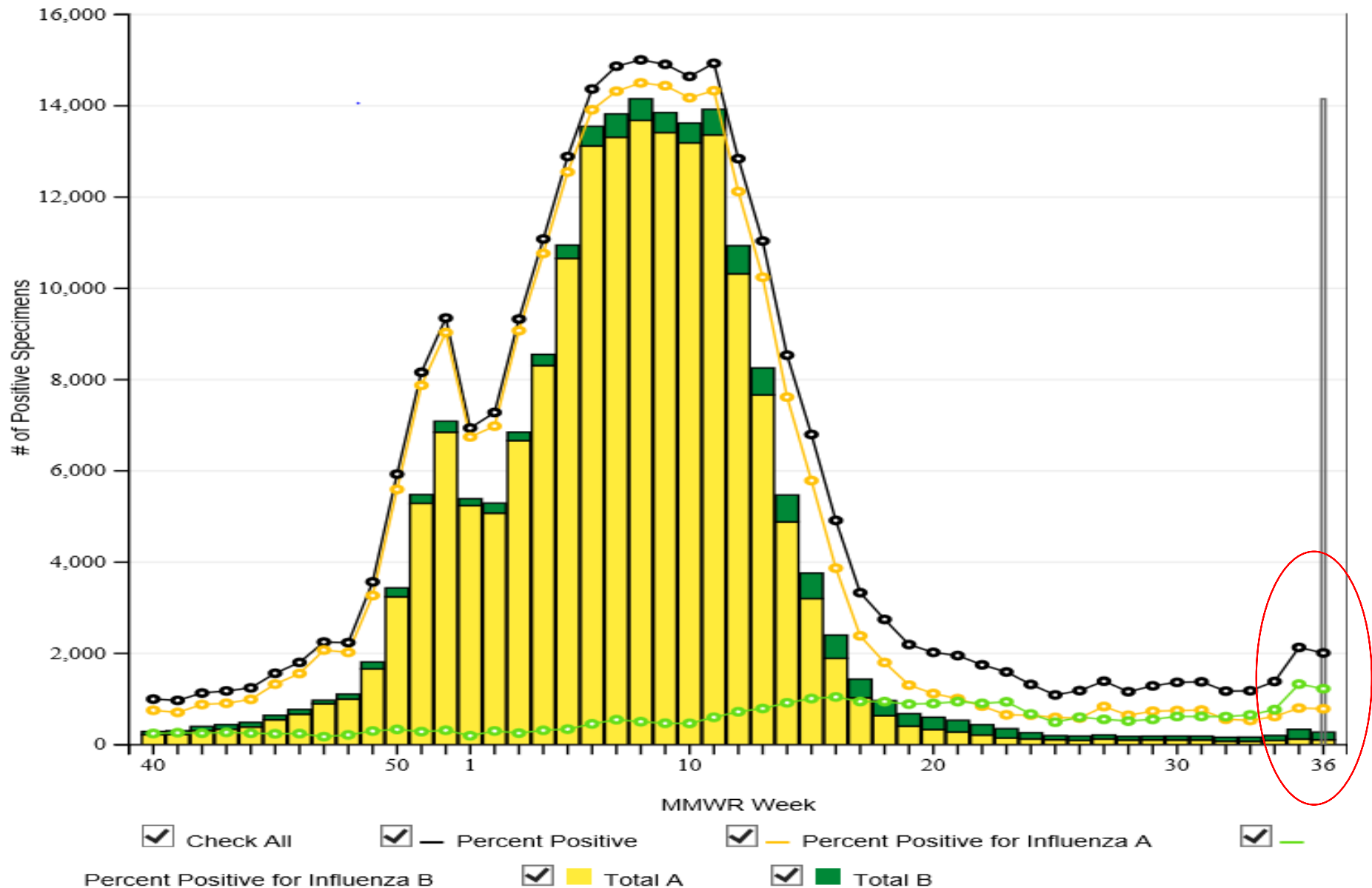
Flu PCR
% Rate

Influenza Positive Tests Reported to CDC by Clinical Laboratories, National Summary, 2018-19 Season, week ending Sep 07, 2019

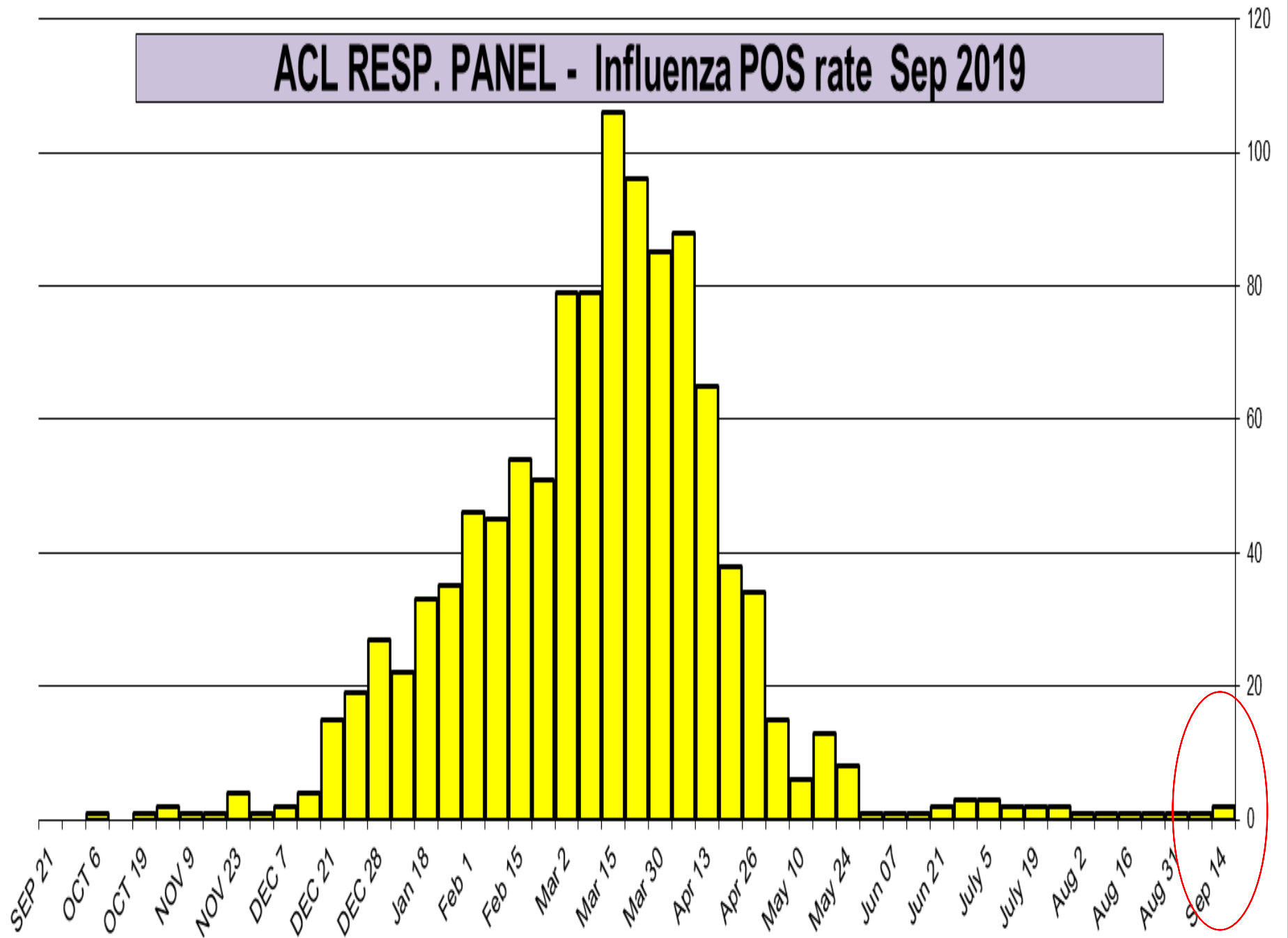
Reported by: U.S. WHO/NREVSS Collaborating Laboratories and ILINet

[Download Image](#) [Download Data](#) [?](#)

Alt key + Click and drag to create rectangle to zoom/Double Clicks to reset zoom

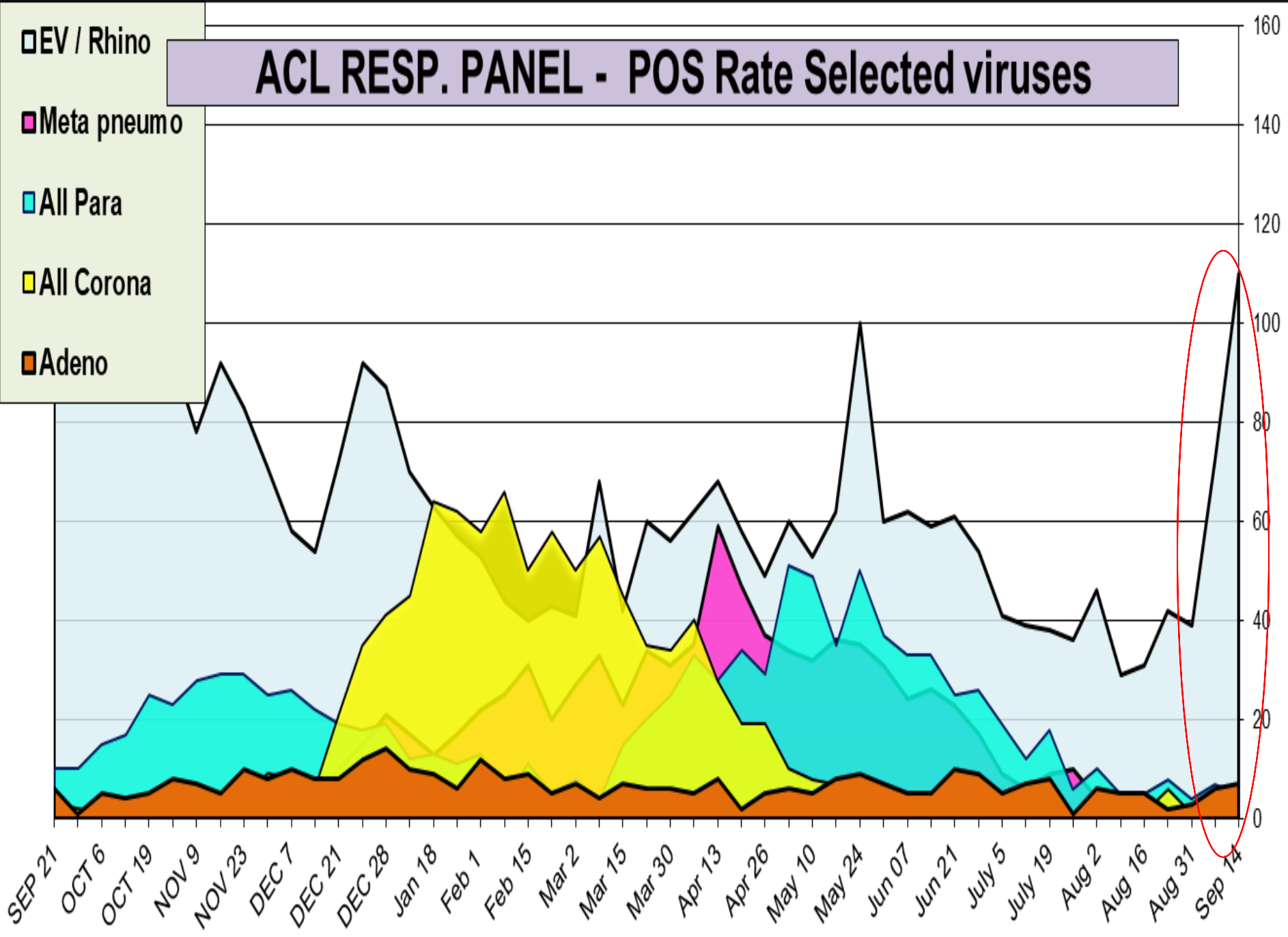


ACL RESP. PANEL - Influenza POS rate Sep 2019

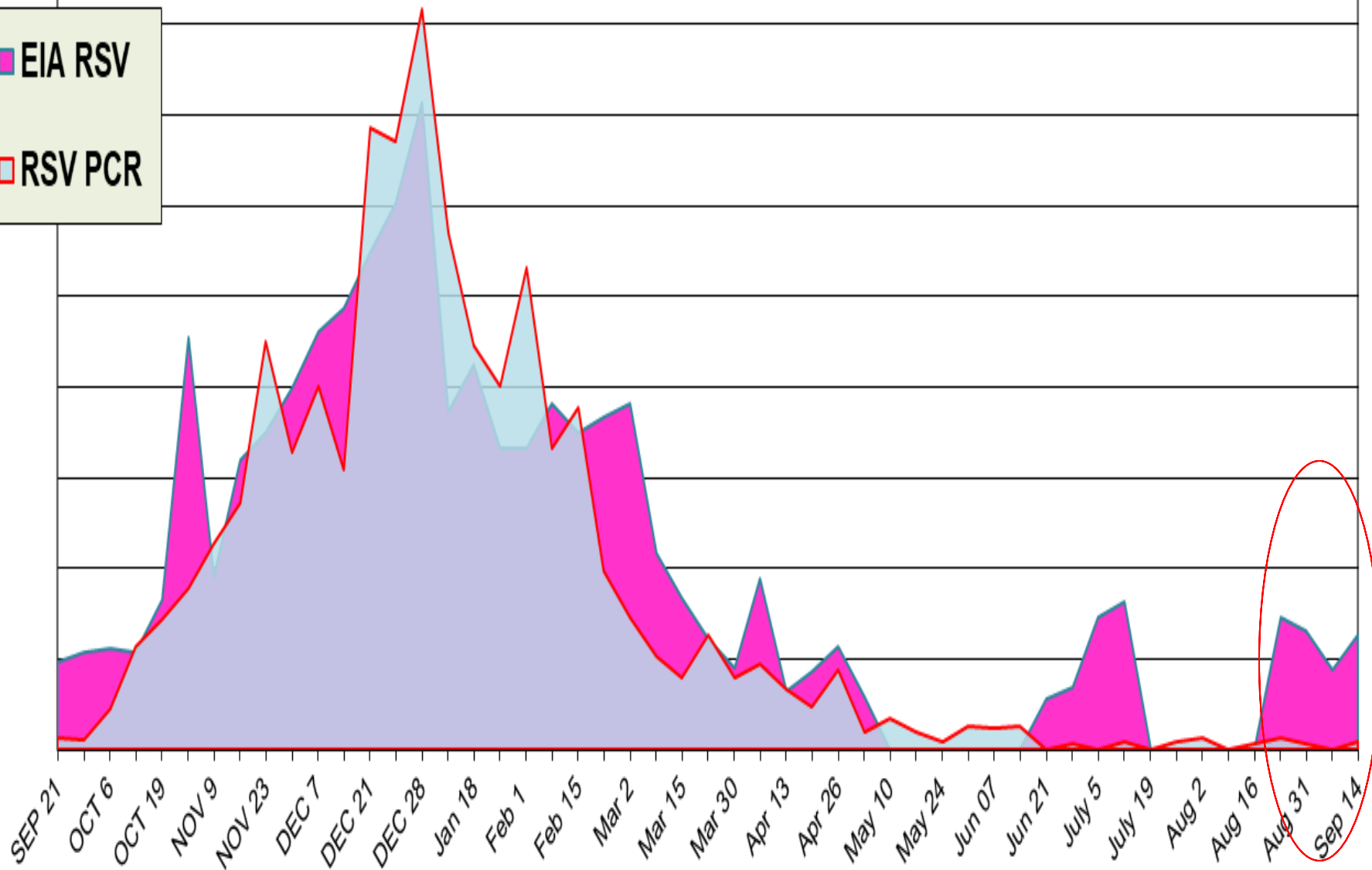
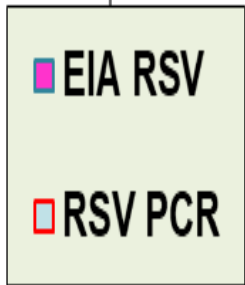


ACL RESP. PANEL - POS Rate Selected viruses

- EV / Rhino
- Meta pneumo
- All Para
- All Corona
- Adeno

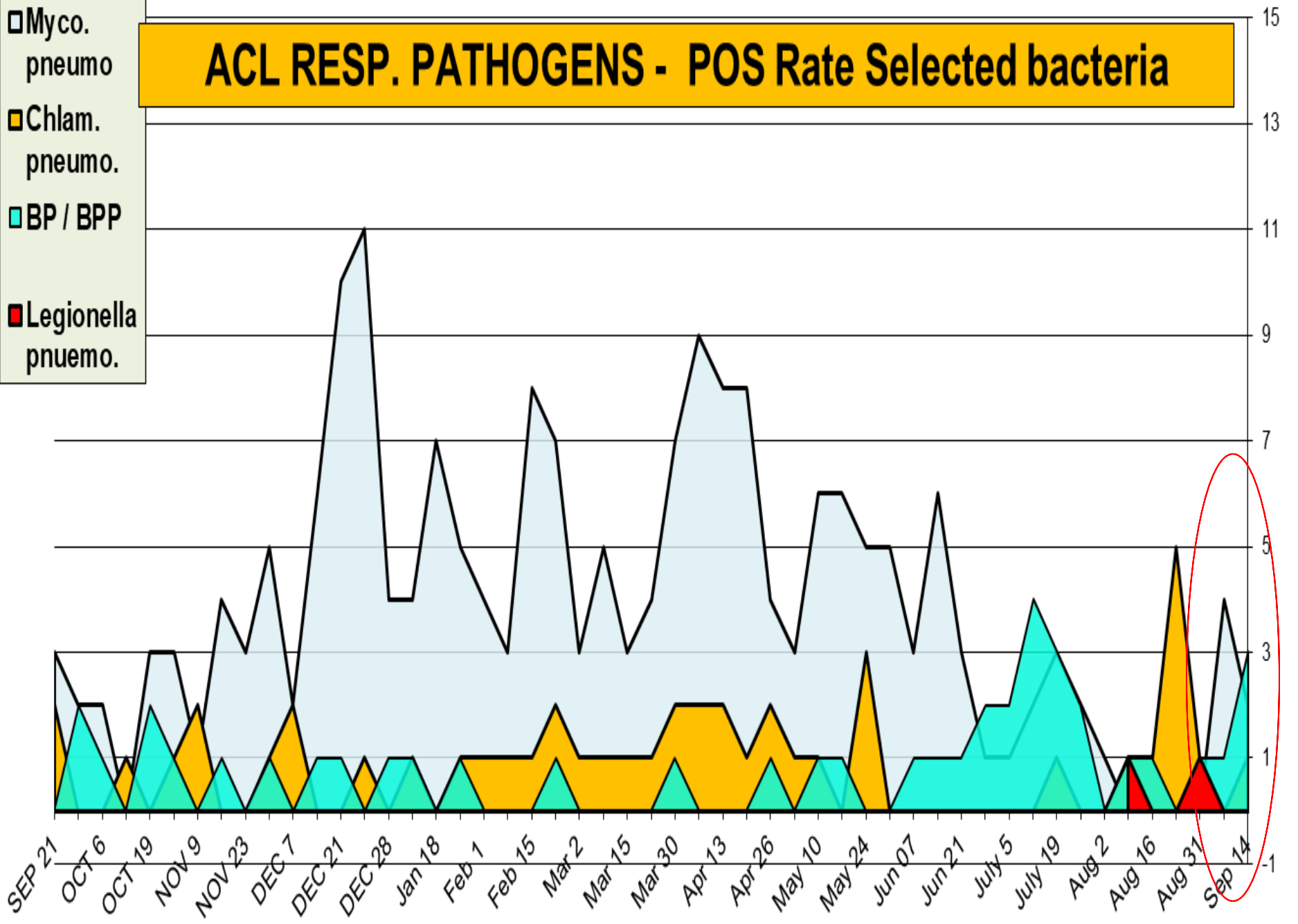


ACL RESP. PANEL - RSV PCR - 0.2%, RSV EIA - 2.6%

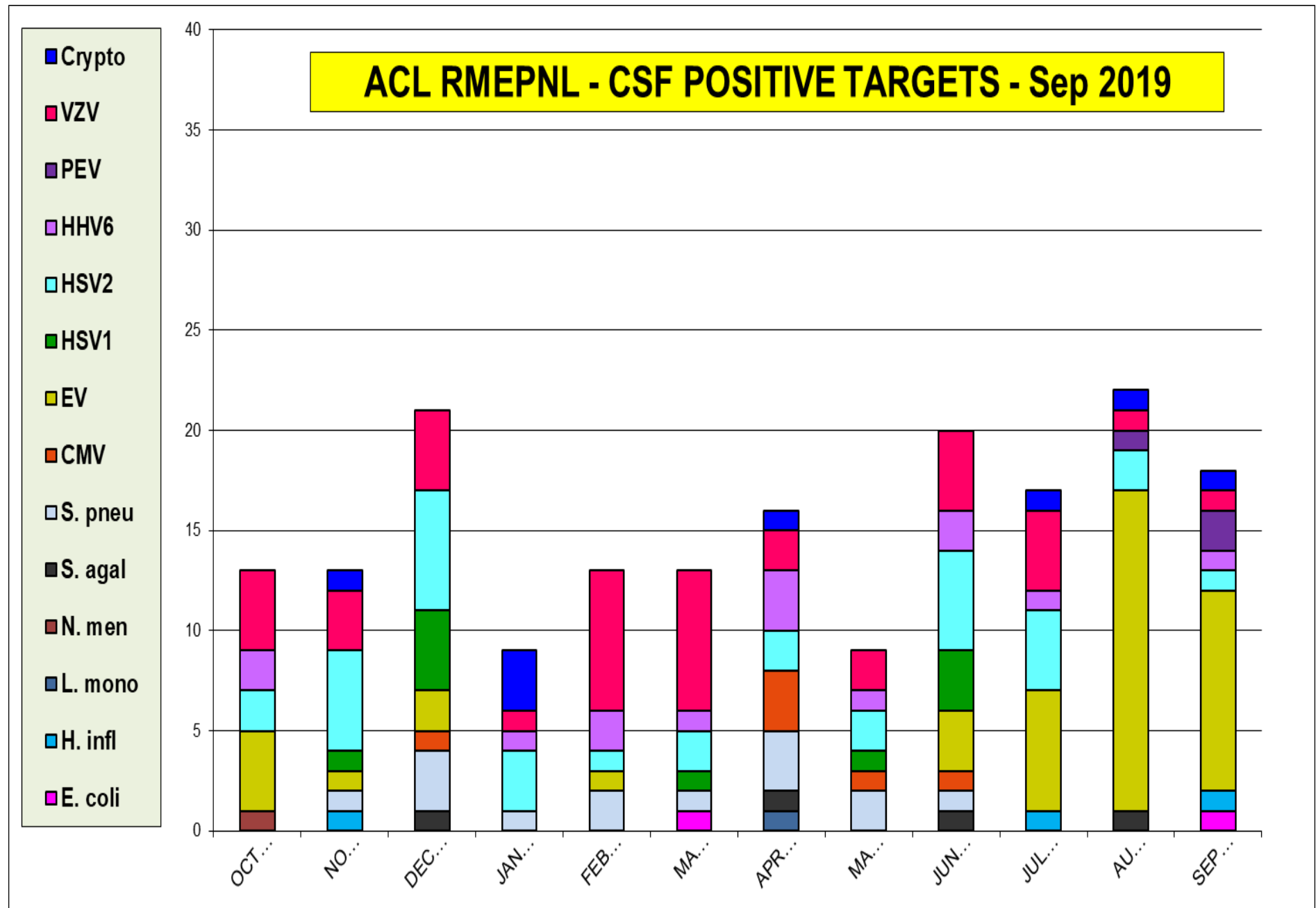


ACL RESP. PATHOGENS - POS Rate Selected bacteria

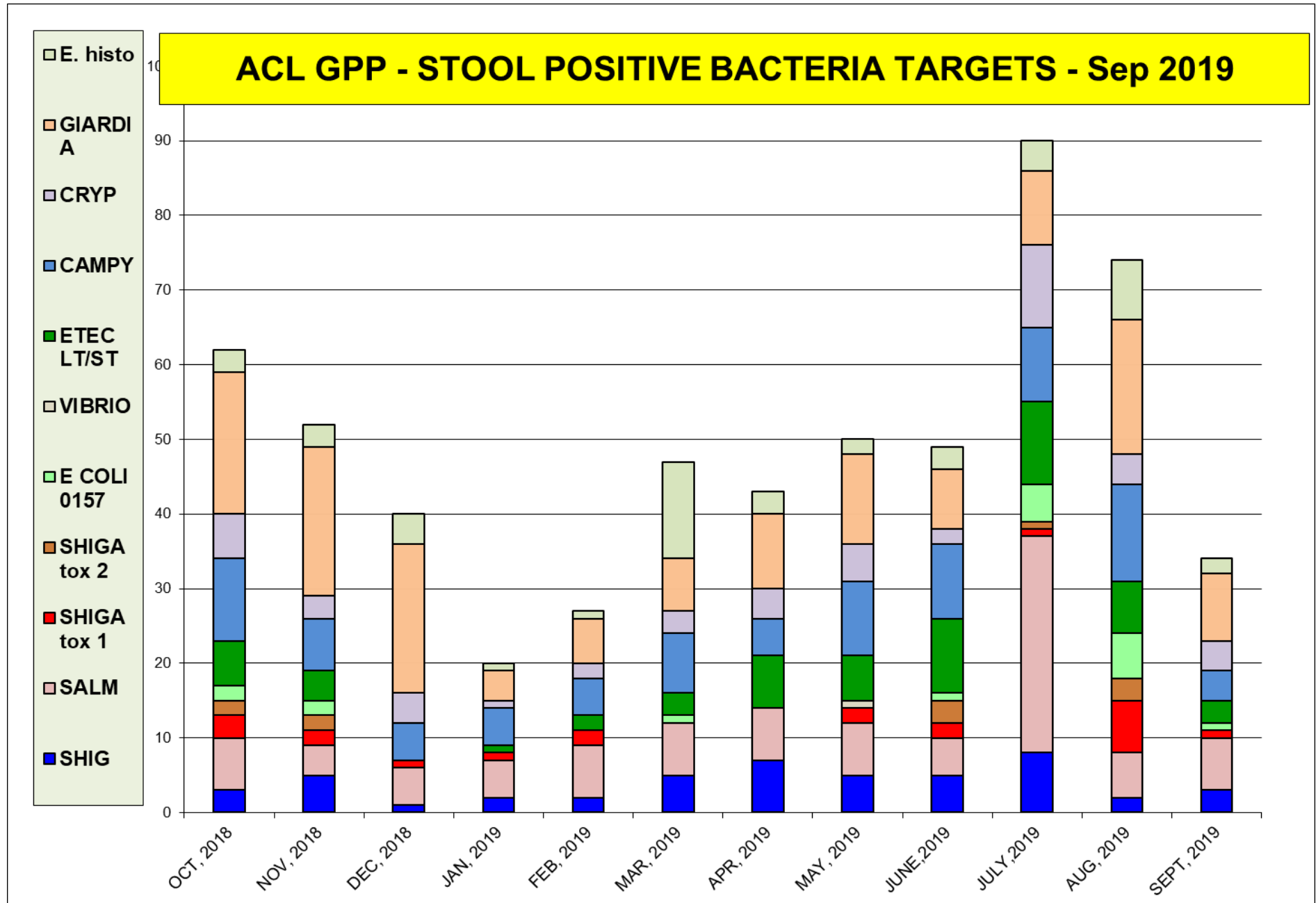
- Myco. pneumo
- Chlam. pneumo.
- BP / BPP
- Legionella pneumo.



The most prevalent targets is Enterovirus (all viruses pos rate 16%)

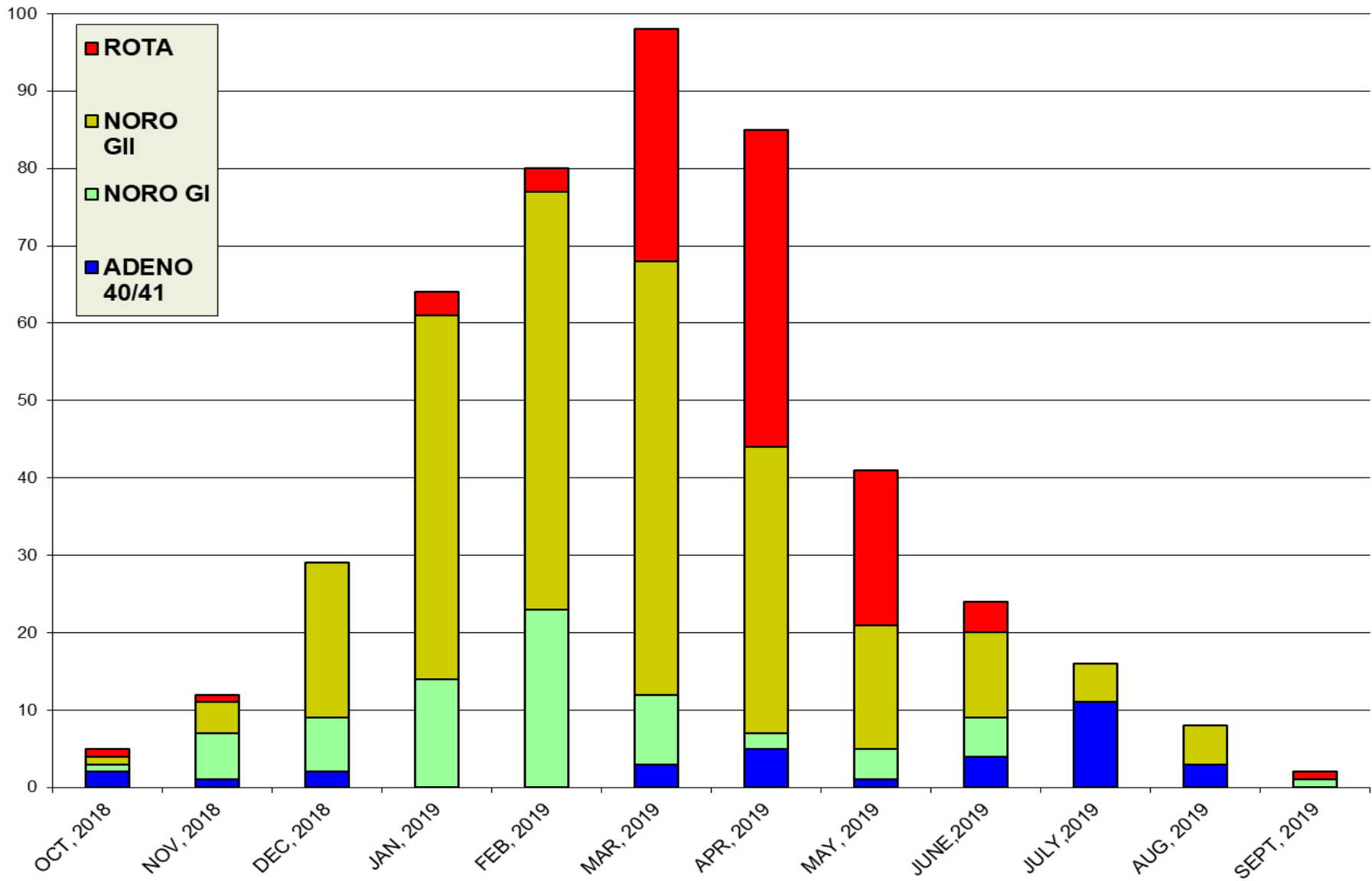


The most prevalent bacterial targets are **Giardia**, **Salmonella**



The most prevalent virus target is Norovirus

ACL GPP - STOOL POSITIVE VIRAL TARGETS - Sep 2019



BV	C.ALB	C.GLB	C.KUR	T.VAG	M.GEN	M.HOM	U.PAV	Tot. pos.
4,806	4,806	4,806	4,806	4,806	4,806	4,806	4,806	4,806
23.8	15.9	2.1	0.4	3.2	0.7	10.2	26.7	83.0

SWAB ONE - POSITIVE TARGETS _ Sep 2019

- URPV
- MHOM
- MGET
- TVAL
- CNKR
- CNGB
- CNALB
- BVR

