

## Respiratory Pathogens - 10 09 2020

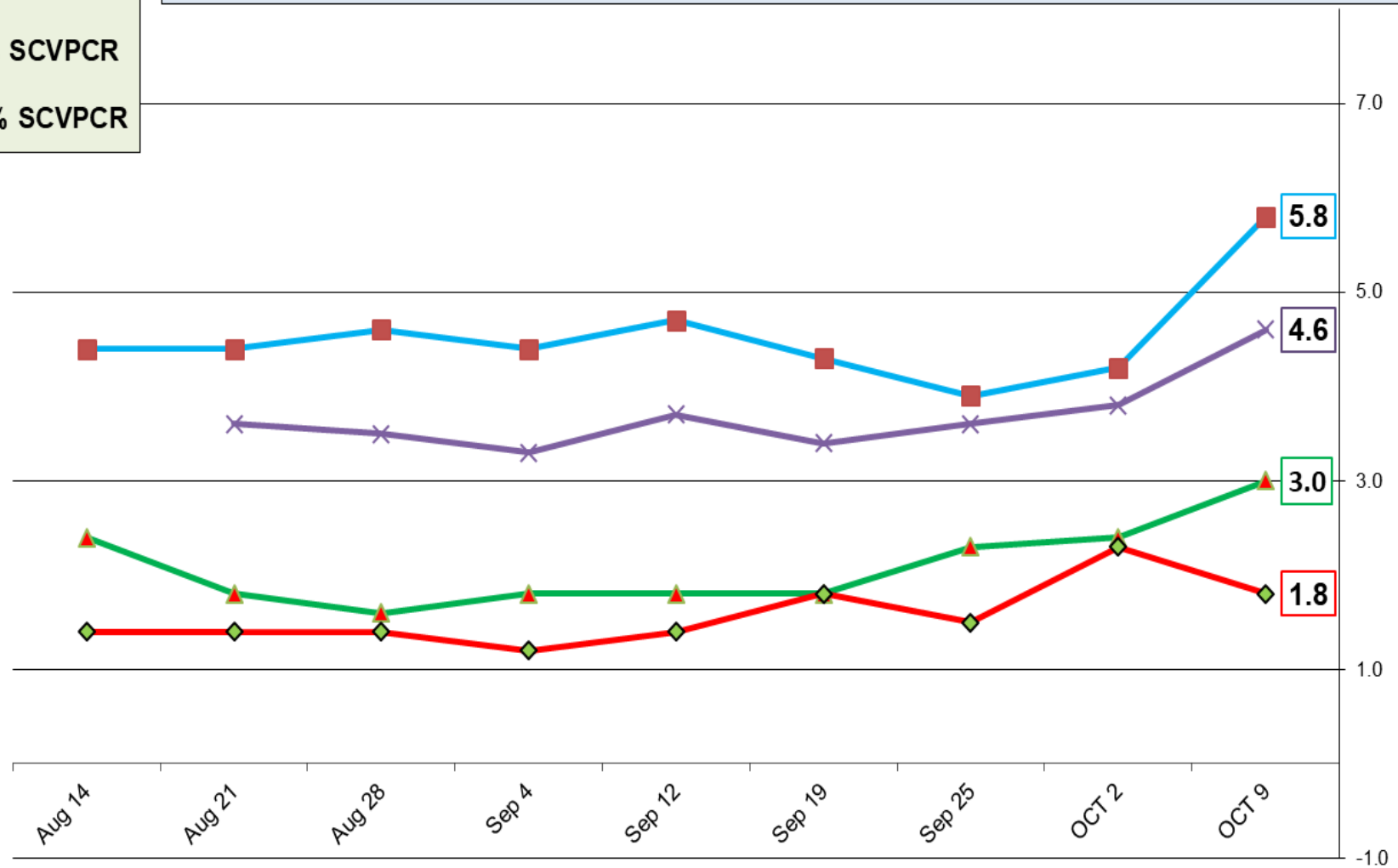


Week	InfA-H1	InfA-H3	2009 H1N1	Inf B	RSV	All Para	EV / Rhino	Meta pneumo	Adeno	All Corona	Bocca	Myc. pneumo	Chlam. pneumo.	Leg. pneumo.	BP / BPP	Total Pos	POS FLU	Total	ACL RPPNL	US %FLU	IL/WI PCR	ACL FLUPCR
OCT 9	0	0	0	0	0	0	9	2	0	0	3	0	0	0	0	14	0	64	0.0	n/a	n/a	0.0
OCT 2	0	0	0	0	0	0	5	0	0	0	1	0	0	1	0	7	0	65	0.0	0.2	0.0	0.0
Sep 25	0	0	0	0	0	0	7	0	2	0	0	0	0	2	0	11	0	111	0.0	0.3	0.0	0.0
Sep 19	0	0	0	0	0	0	4	0	0	0	0	0	0	0	0	4	0	28	0.0	0.4	0.3	0.0
Sep 12	0	0	0	0	0	0	0	1	0	0	0	0	0	0	0	1	0	58	0.0	0.2	0.0	0.0
Sep 4	0	0	0	0	0	0	2	0	0	0	0	0	0	0	0	2	0	146	0.0	0.2	0.5	0.0
Aug 28	0	0	0	0	0	0	3	0	0	0	0	0	0	1	0	4	0	55	0.0	0.3	0.4	0.0
Aug 21	0	0	0	0	0	0	3	0	0	0	0	0	0	0	0	3	0	32	0.0	0.2	1.0	0.0
Aug 14	0	0	0	0	0	0	1	0	0	0	0	0	0	1	0	2	0	57	0.0	0.2	0.2	0.0
Aug 7	0	0	0	0	0	0	3	0	0	1	0	0	1	0	0	5	0	112	0.0	0.2	0.1	0.0
July 31	0	0	0	0	0	0	2	0	0	0	0	0	0	0	0	0	0	114	0.0	0.1	0.0	0.0
Jul 25	0	0	0	0	0	0	1	0	0	0	0	0	0	0	0	0	0	53	0.0	0.1	0.4	0.0

SARS-COV-2							RSV A/B				FLU A/B	
Week	IL % SCVPCR	WI % SCVPCR	IL % COV19	WI % COV19	IL % COVAG	WI % COVAG	IL % RSVPCR	WI % RSVPCR	IL % RSVAG	WI % RSVAG	IL % FLUPCR	WI % FLUPCR
OCT 9	5.8	4.6	3.0	1.8	n/a	19.9	0	0	0	0	0	0
OCT 2	4.2	3.8	2.4	2.3	n/a	19.4	0	0	0	0	0	0
Sep 25	3.9	3.6	2.3	1.5	n/a	18.3	0	0	0	0	0	0
Sep 19	4.3	3.4	1.8	1.8	n/a	n/a	0	0	0	0	0	0
Sep 12	4.7	3.7	1.8	1.4	n/a	n/a	0	0	0	0	0	0
Sep 4	4.4	3.3	1.8	1.2	n/a	n/a	0	0	0	0	0	0
Aug 28	4.6	3.5	1.6	1.4	n/a	n/a	0	0	0	0	0	0
Aug 21	4.4	3.6	1.8	1.4	n/a	n/a	0	0	0	0	0	0
Aug 14	4.4		2.4	1.4	n/a	n/a	0	0	0	0	0	0
Aug 7	3.9		4.3	5.7	n/a	n/a	0	0	0	0	0	0
July 31	3.8		4.6	7.6	n/a	n/a	0	0	0	0	0	0
Jul 25	4.0		4.5	7.4	n/a	n/a	0	0	0	0	0	0

## ACL COV19 PCR and SCVPCR - Pos rate Oct 09 2020

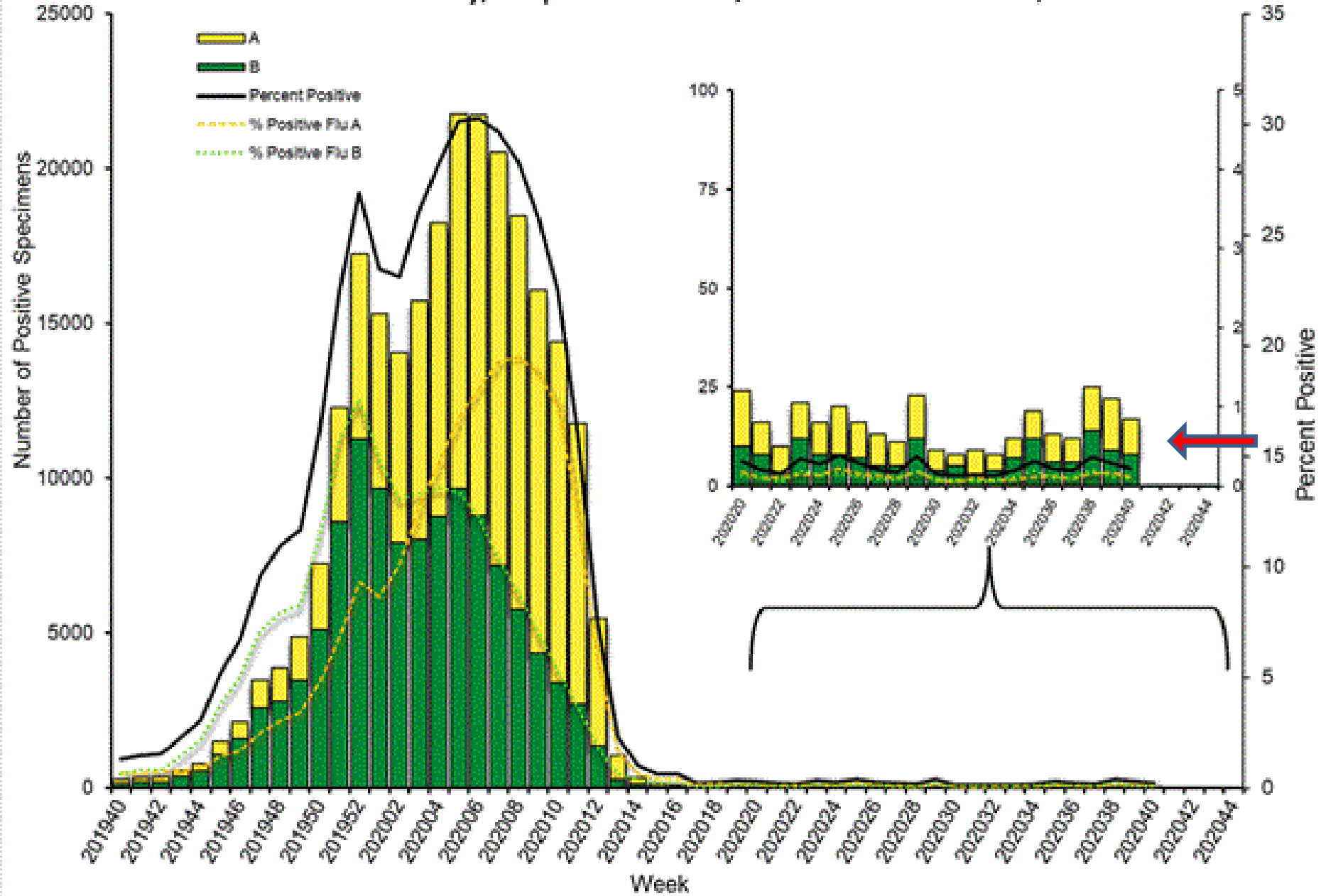
- IL % COV19
- WI % COV19
- IL % SCVPCR
- WI % SCVPCR



COVID-19 Aug 14- Oct 9 - ACL Central labs ICL and WCL provided testing mostly for asymptomatic pre-surgical population.

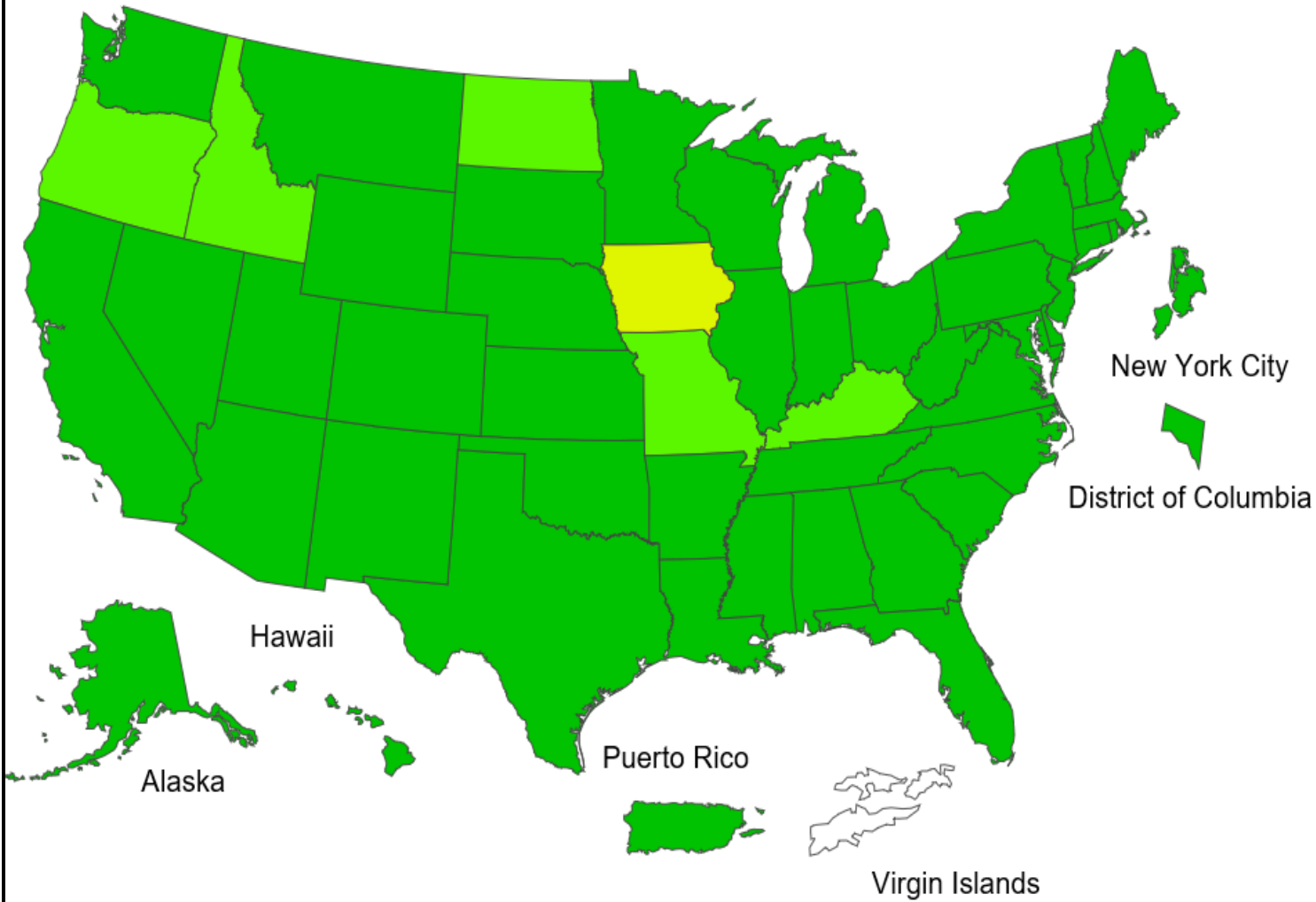
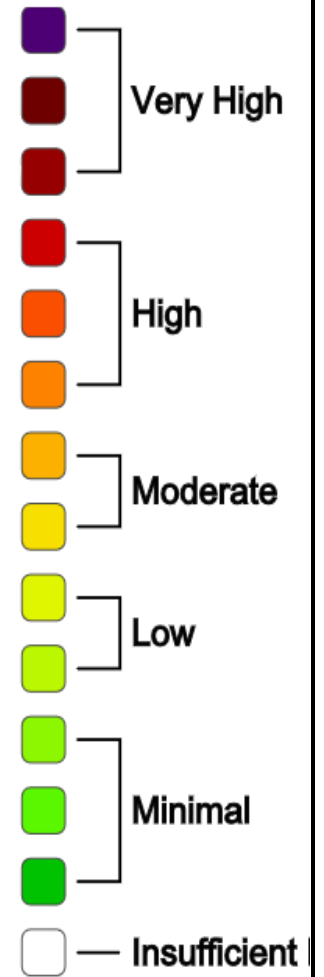
**SCVPCR** - Rapid PCR test performed by Cepheid better reflects current Pos rate.

# Influenza Positive Tests Reported to CDC by U.S. Clinical Laboratories, National Summary, September 29, 2019 – October 3, 2020



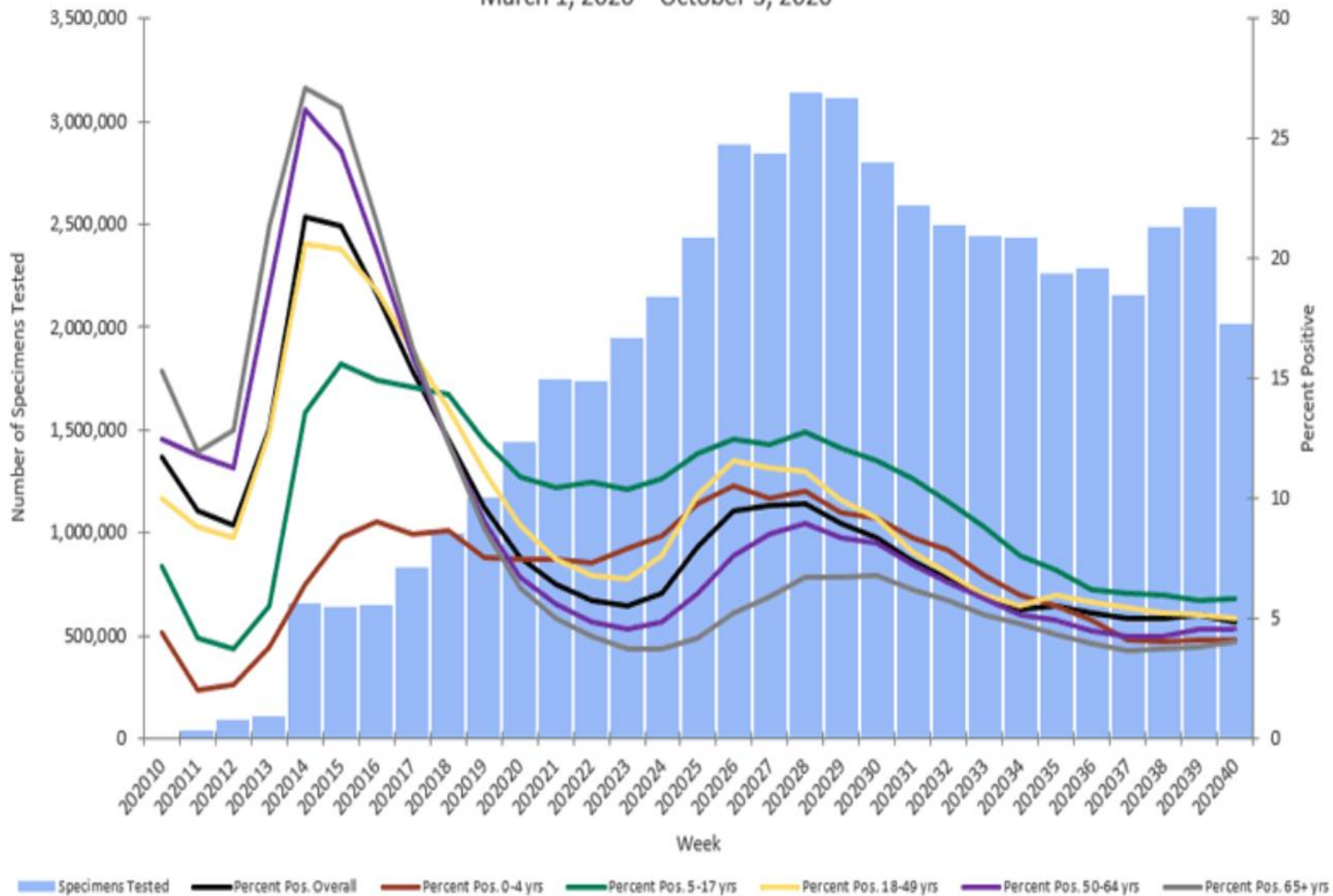
2020-21 Influenza Season Week 40 ending Oct 03, 2020

ILI Activity Level

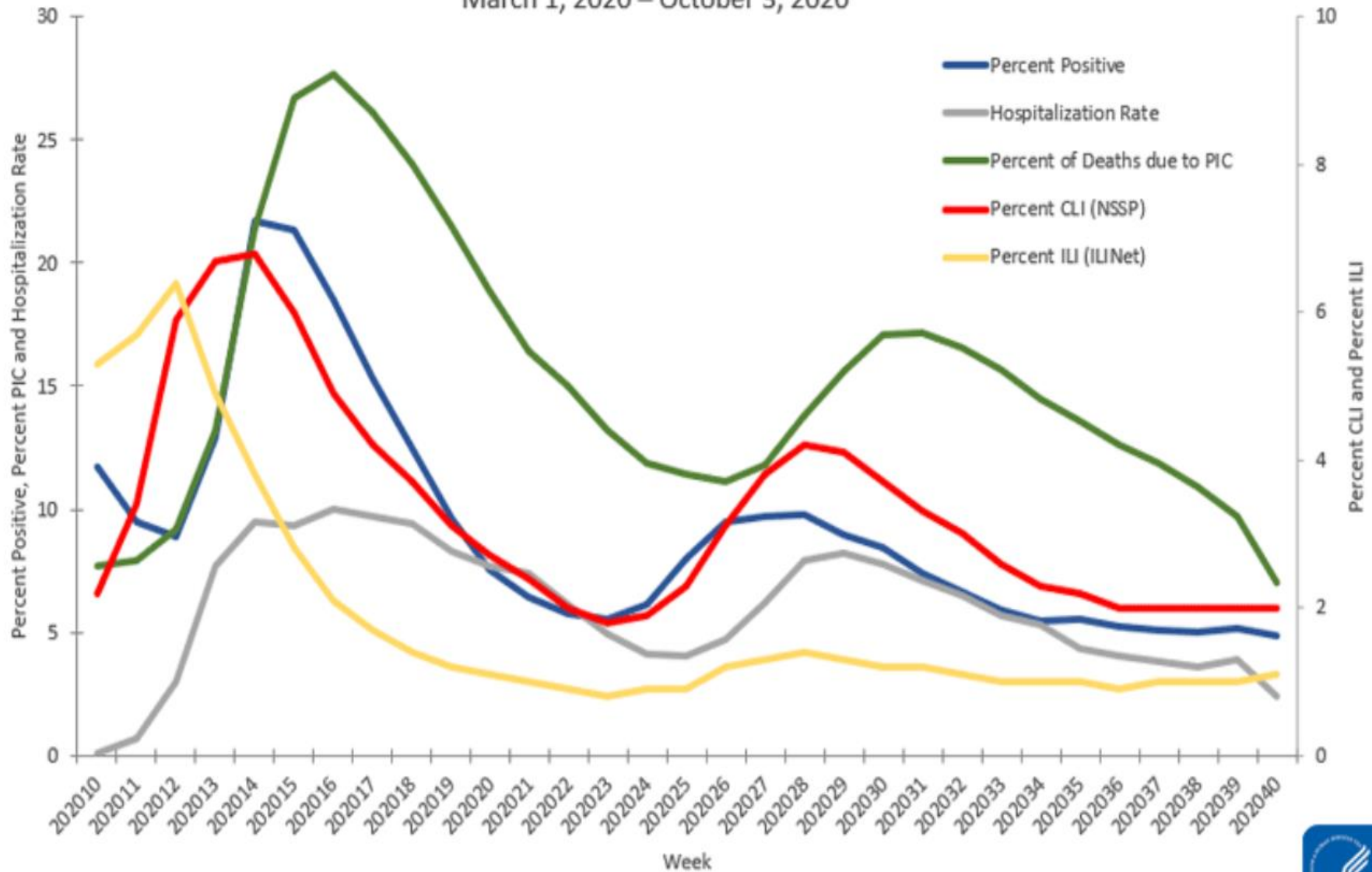


# Number of Specimens Tested and Percent Positive for SARS- CoV-2: Combined Laboratories Reporting to CDC (Public Health Laboratories and a Subset of Commercial and Clinical Laboratories)

March 1, 2020 – October 3, 2020

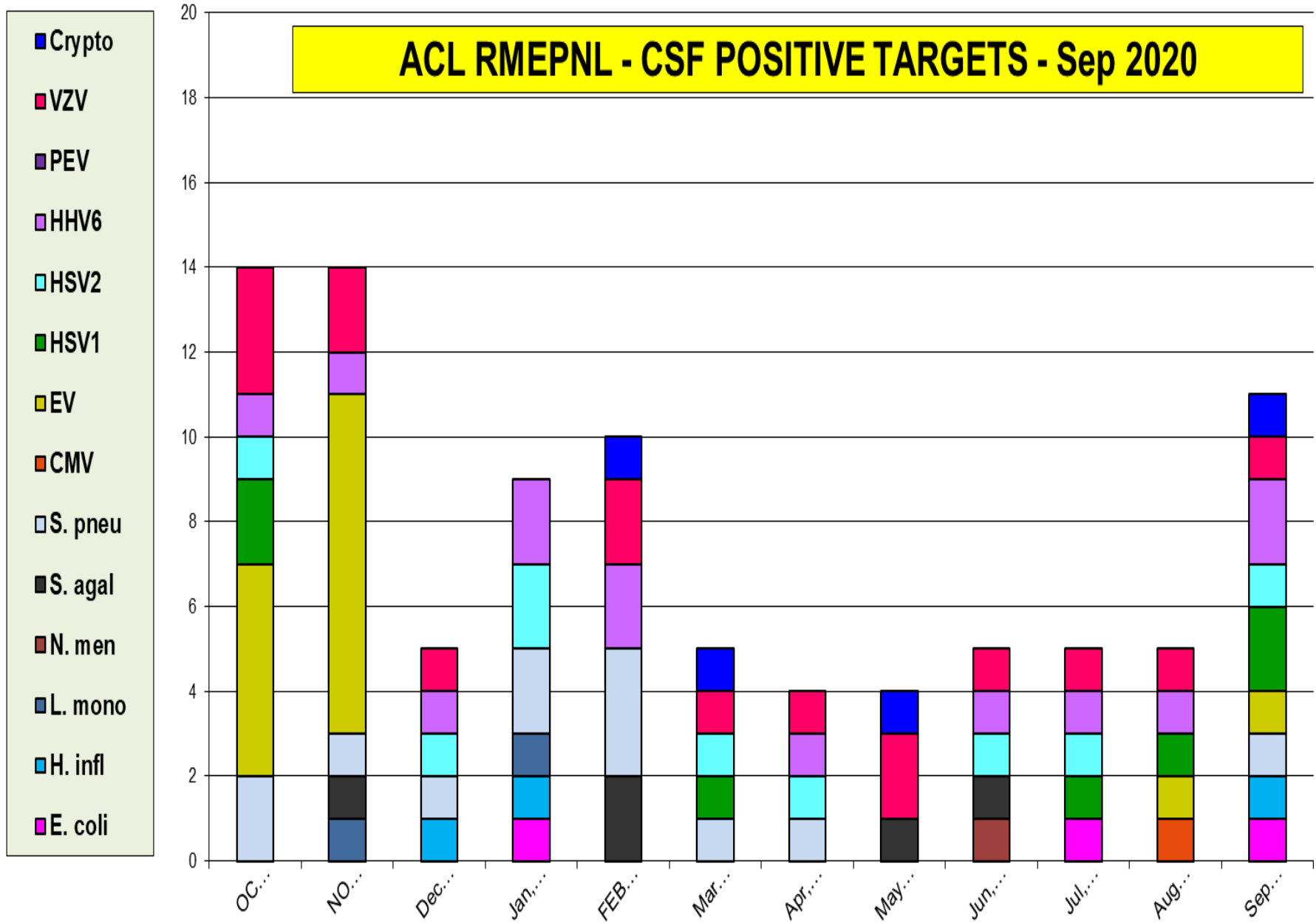


National COVID-19 Activity Indicators:  
 Laboratory, Outpatient/Emergency Department, Hospitalization and Mortality Data  
 March 1, 2020 – October 3, 2020

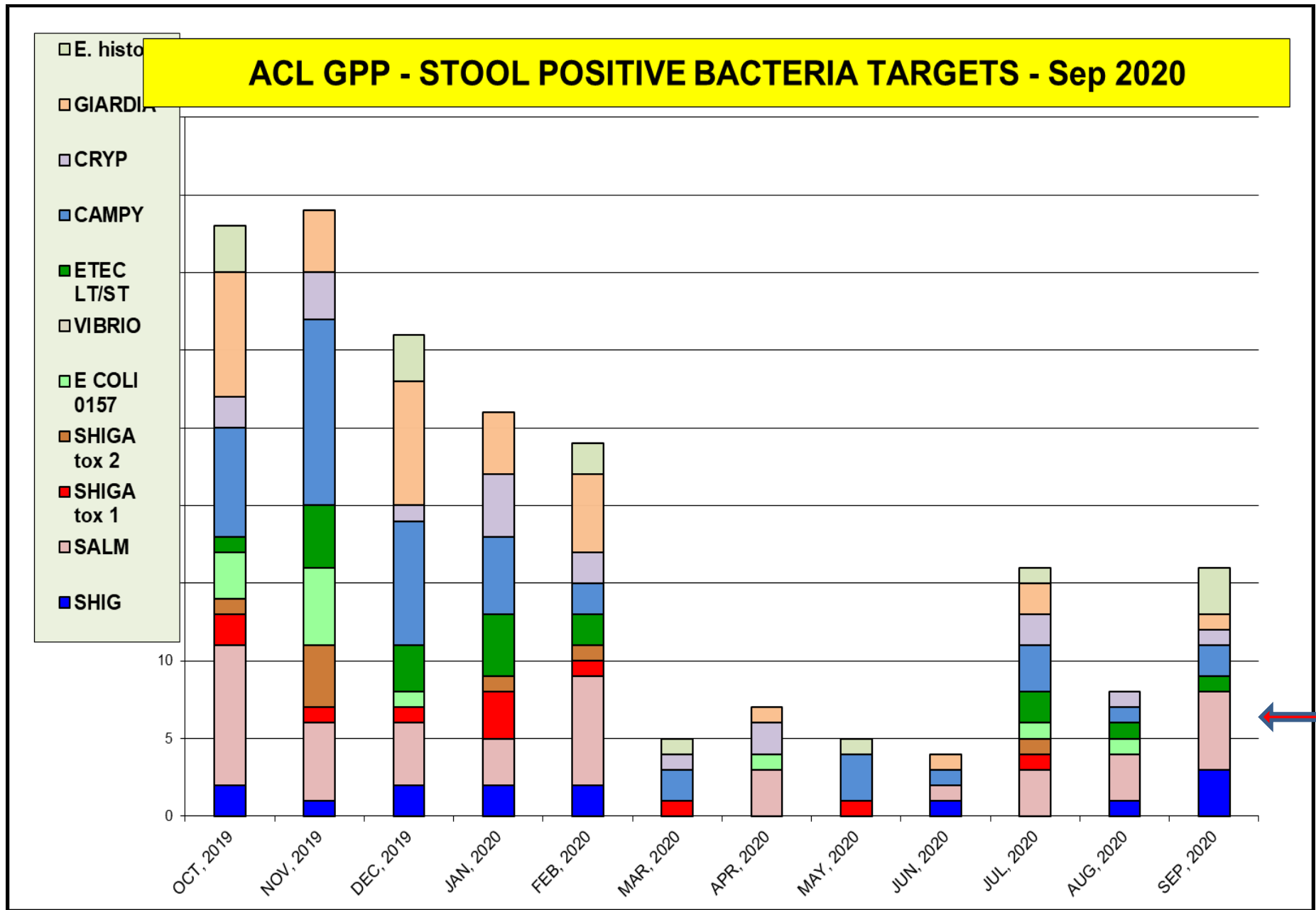




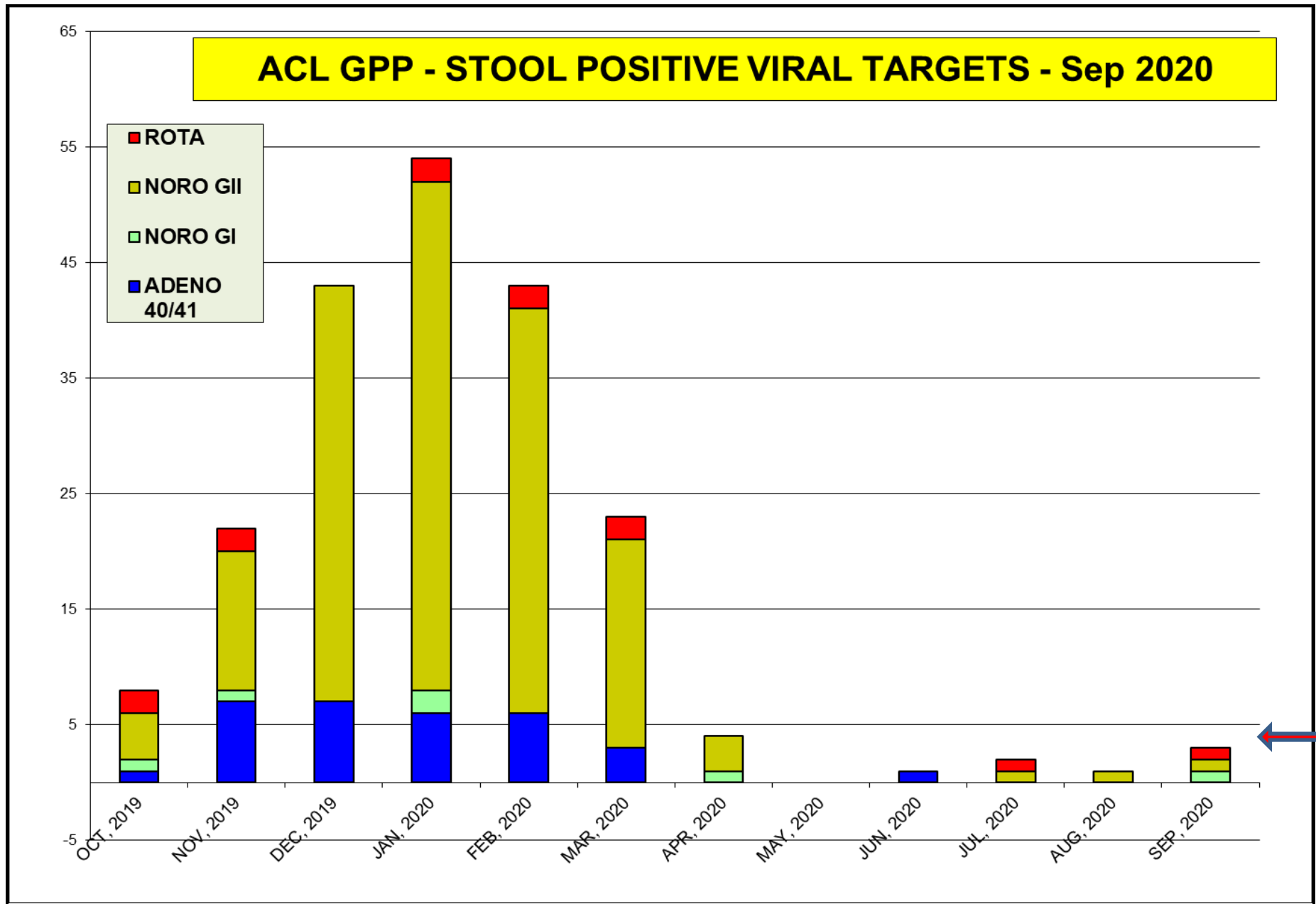
The most prevalent target - all CSF viruses pos rate is 9 % (HSV1 and HHV6)



The most prevalent bacterial targets in Sep (Salmonella and E.histo)



# The most prevalent virus targets in Sep - Norovirus



## Sep 2020 positivity rate (%)

Bacterial Vag.	Candida spp.	Candida glab.	Trich. vag	M. genitalium
29	23	2	2	5

