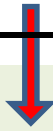
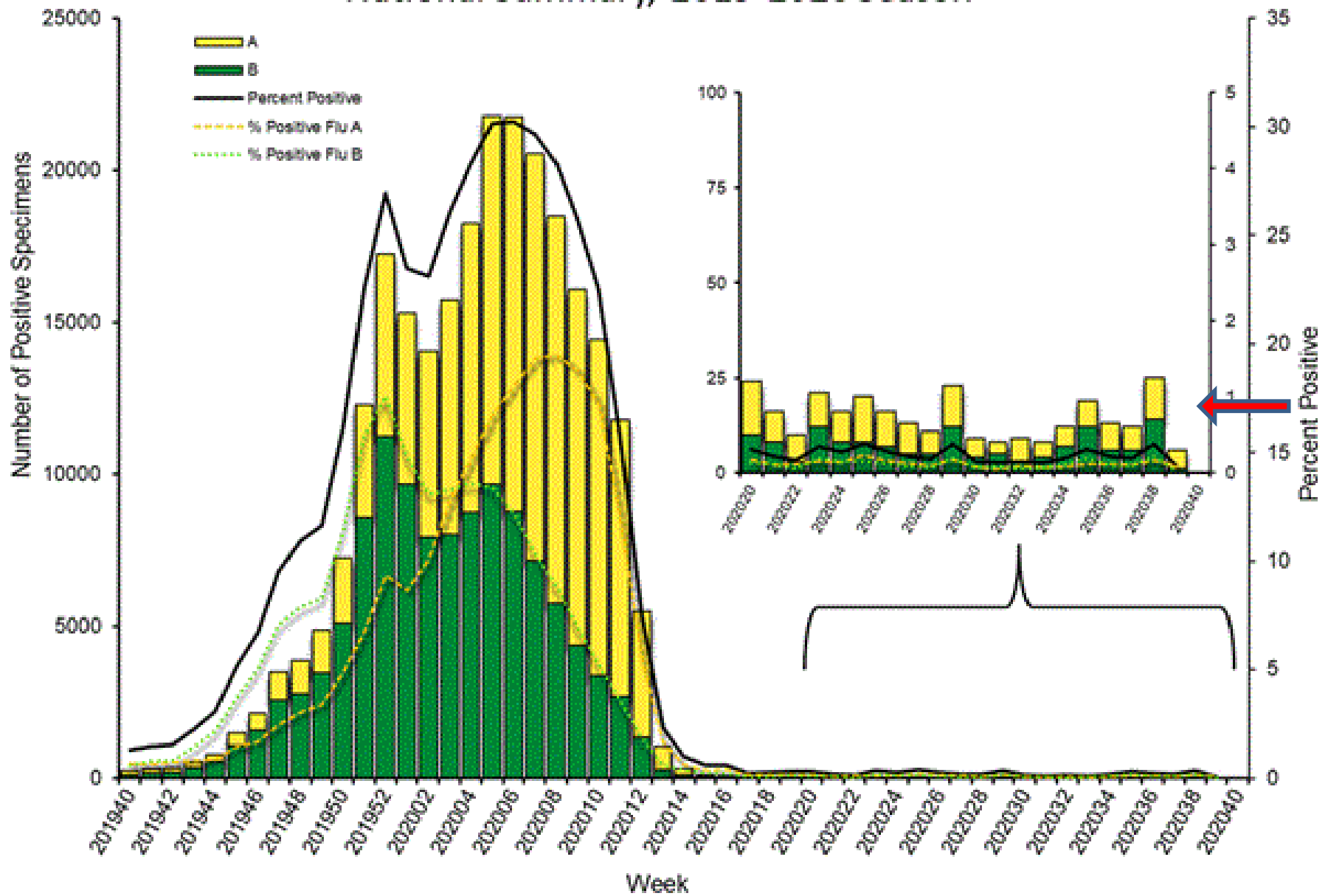


Respiratory Pathogens - 10 01 2020



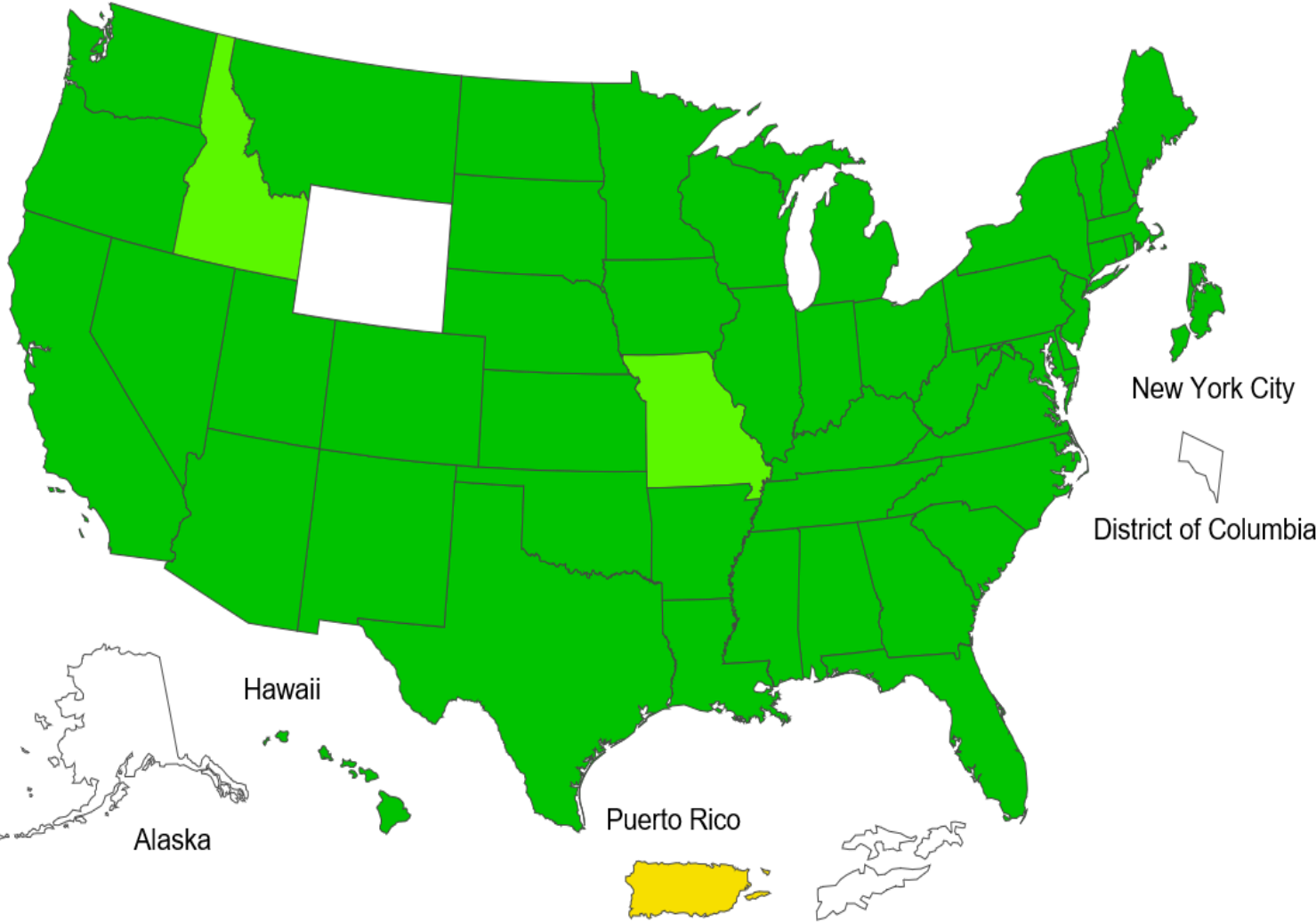
Week	InfA-H1	InfA-H3	2009 H1N1	Inf B	RSV	All Para	EV / Rhino	Meta pneumo	Adeno	All Corona	Bocca	Myc. pneumo	Chlam. pneumo.	Leg. pneumo.	BP/ BPP	Total Pos	POS FLU	Total	ACL RPPNL	US %FLU	IL/WI PCR	ACL FLUPCR	RRL SCVPCR	IL % COV19	WI % COV19
OCT 1	0	0	0	0	0	0	5	0	0	0	1	0	0	1	0	7	0	65	0.0	n/a	n/a	0.0	4.0	2.3	1.5
Sept 25	0	0	0	0	0	0	7	0	2	0	0	0	0	2	0	11	0	111	0.0	0.1	0.0	0.0	3.8	2.4	2.3
Sept 19	0	0	0	0	0	0	4	0	0	0	0	0	0	0	0	4	0	28	0.0	0.4	0.3	0.0	4.3	1.8	1.8
Sept 12	0	0	0	0	0	0	0	1	0	0	0	0	0	0	0	1	0	58	0.0	0.2	0.0	0.0	4.4	1.8	1.4
Sept 4	0	0	0	0	0	0	2	0	0	0	0	0	0	0	0	2	0	146	0.0	0.2	0.5	0.0	3.7	1.8	1.2
Aug 28	0	0	0	0	0	0	3	0	0	0	0	0	0	1	0	4	0	55	0.0	0.3	0.4	0.0	4.2	1.6	1.4
Aug 21	0	0	0	0	0	0	3	0	0	0	0	0	0	0	0	3	0	32	0.0	0.2	1.0	0.0	4.1	1.8	1.4
Aug 14	0	0	0	0	0	0	1	0	0	0	0	0	0	1	0	2	0	57	0.0	0.2	0.2	0.0	4.4	2.4	1.4
Aug 7	0	0	0	0	0	0	3	0	0	1	0	0	1	0	0	5	0	112	0.0	0.2	0.1	0.0	3.9	4.3	5.7
July 31	0	0	0	0	0	0	2	0	0	0	0	0	0	0	0	0	0	114	0.0	0.1	0.0	0.0	3.8	4.6	7.6
Jul 25	0	0	0	0	0	0	1	0	0	0	0	0	0	0	0	0	0	53	0.0	0.1	0.4	0.0	4.0	4.5	7.4
Jul 18	0	0	0	0	0	0	0	0	0	0	0	0	0	0	0	0	0	36	0.0	0.1	0.5	0.0	3.2	4.1	7.4
Jul 11	0	0	0	0	0	0	0	0	0	0	0	0	0	1	0	1	0	92	0.0	0.3	0.3	0.0	3.9	3.6	6.9
Jul 3	0	0	0	0	0	0	2	0	0	0	1	0	0	0	0	3	0	91	0.0	0.3	0.4	0.0	3.7	3.7	5.3

Influenza Positive Tests Reported to CDC by U.S. Clinical Laboratories, National Summary, 2019-2020 Season



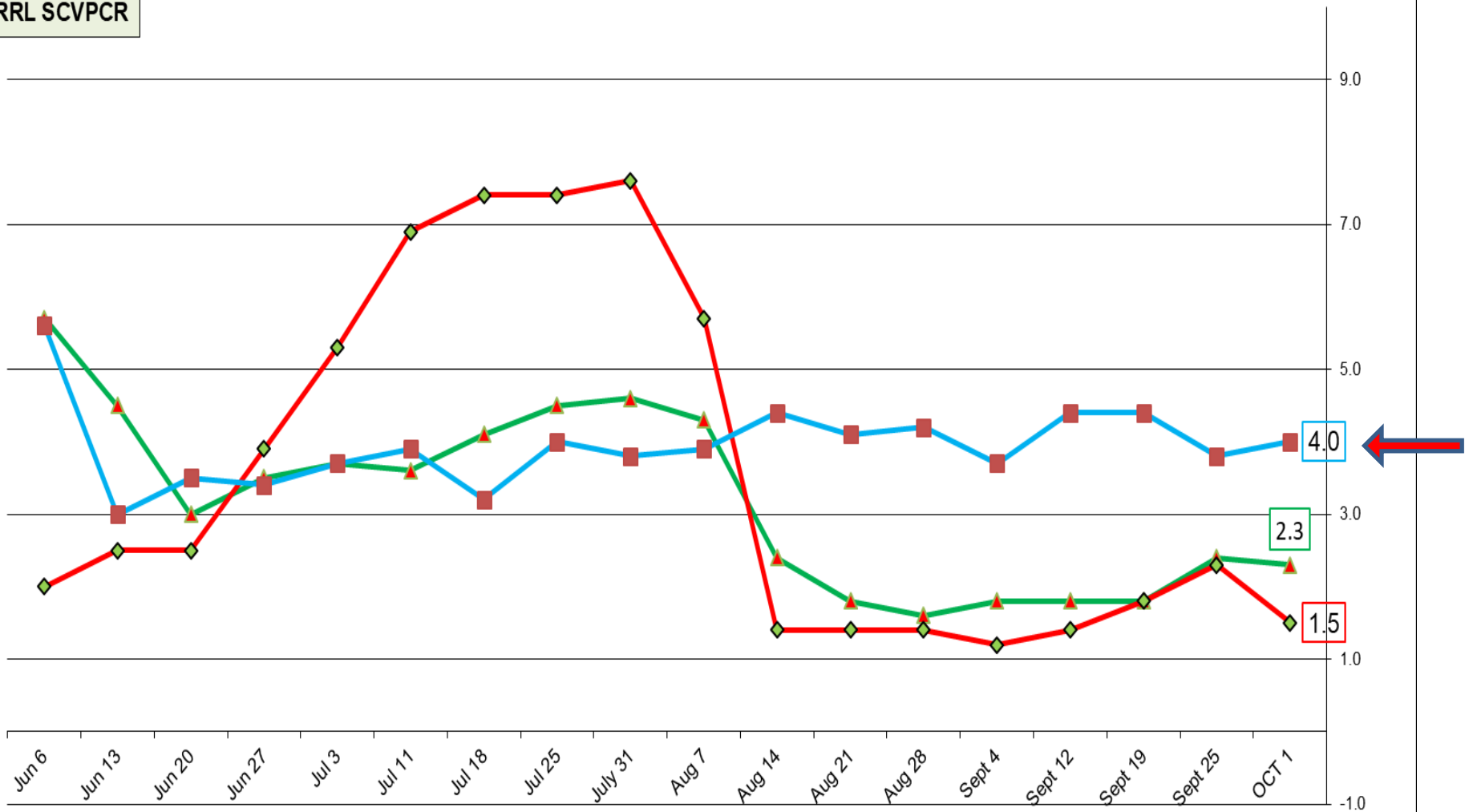
2019-20 Influenza Season Week 39 ending Sep 26, 2020

ILI Activity Level



ACL COV19 PCR and SCVPCR - Pos rate Oct 01 2020

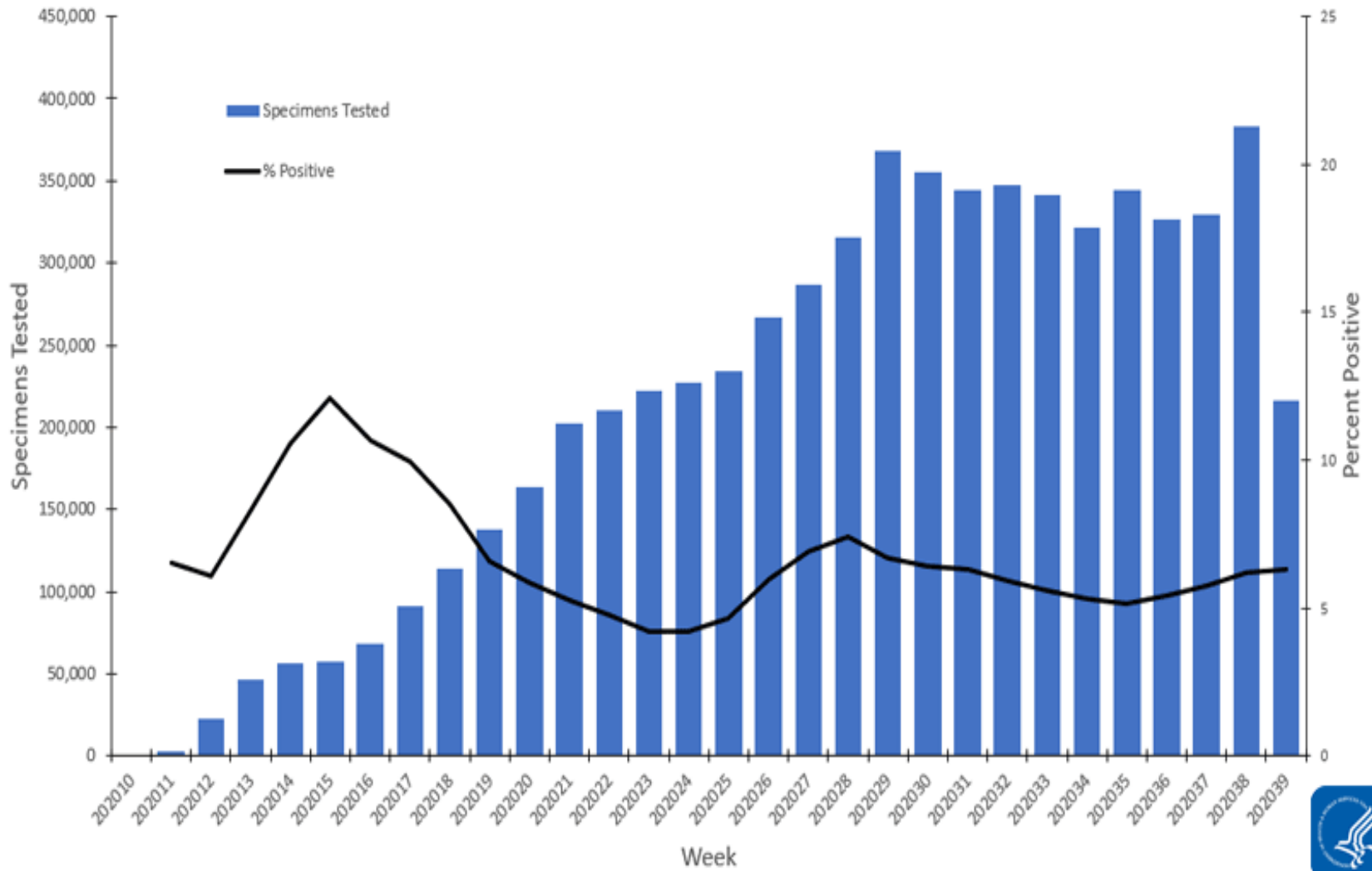
- ▲ IL % COV19
- ◆ WI % COV19
- RRL SCVPCR



Aug 14- Sep 12 - ACL Central labs ICL and WCL provided testing mostly for asymptomatic pre-surgical population only.

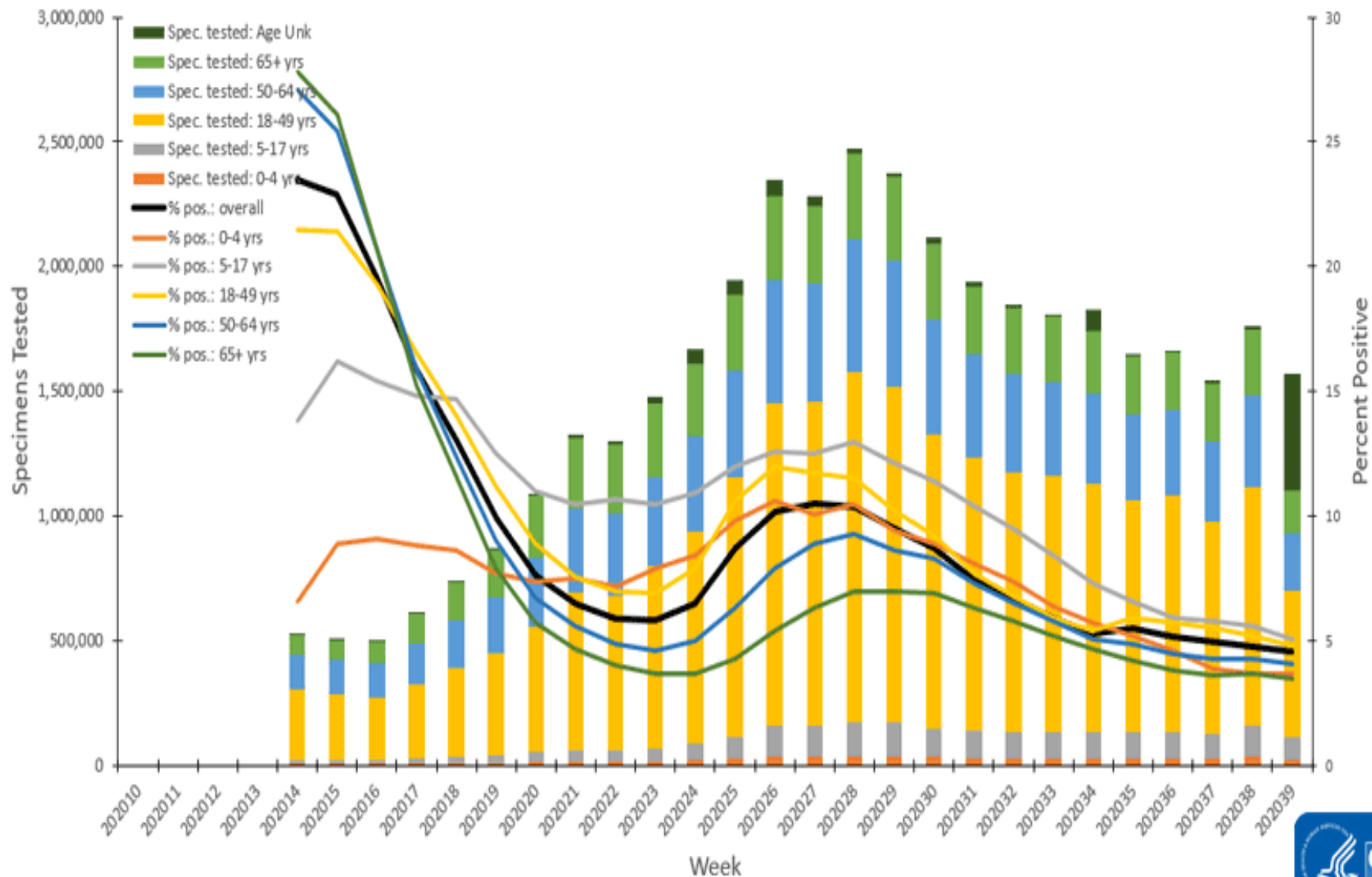
SCVPCR Rapid test performed by Cepheid better reflects current Pos rate.

U.S. Clinical Laboratories Reporting to the National Respiratory and Enteric Virus Surveillance System: Number of Specimens Tested and Percent Positive for SARS-CoV-2
March 8, 2020 – September 26, 2020

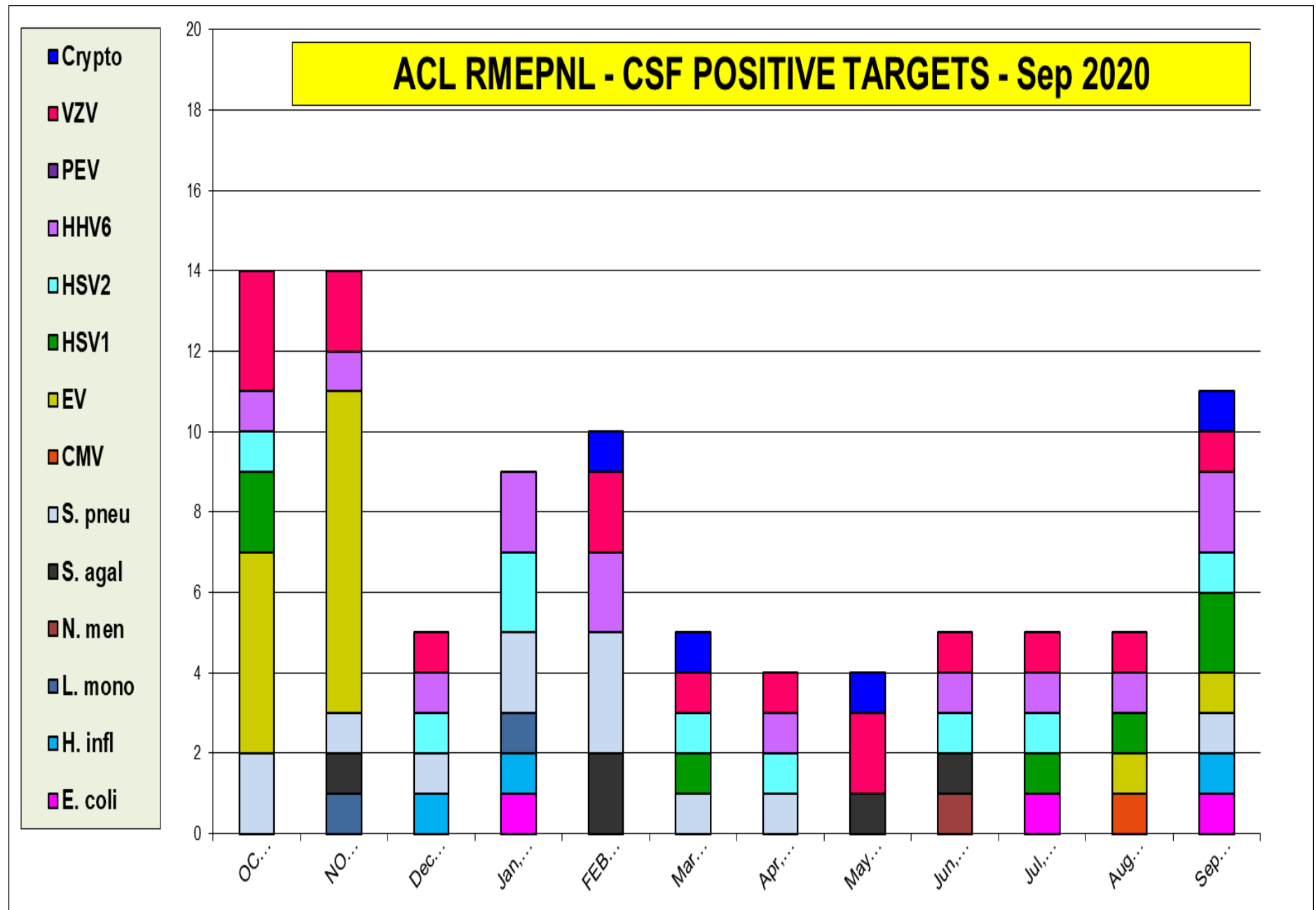


Summary of Laboratory Testing Results Reported to CDC*	Week 39 (Sept. 20–Sept. 26, 2020)	Cumulative since March 1, 2020
No. of specimens tested	2,080,268	53,644,944
Public Health Laboratories	296,373	6,481,480
Clinical Laboratories	216,040	6,403,163
Commercial Laboratories	1,567,855	40,760,301
No. of positive specimens (%)	99,950 (4.8%)	4,292,225 (8.0%)
Public Health Laboratories	14,670 (4.9%)	480,199 (7.4%)
Clinical Laboratories	13,629 (6.3%)	390,489 (6.1%)
Commercial Laboratories	71,651 (4.6%)	3,421,537 (8.4%)

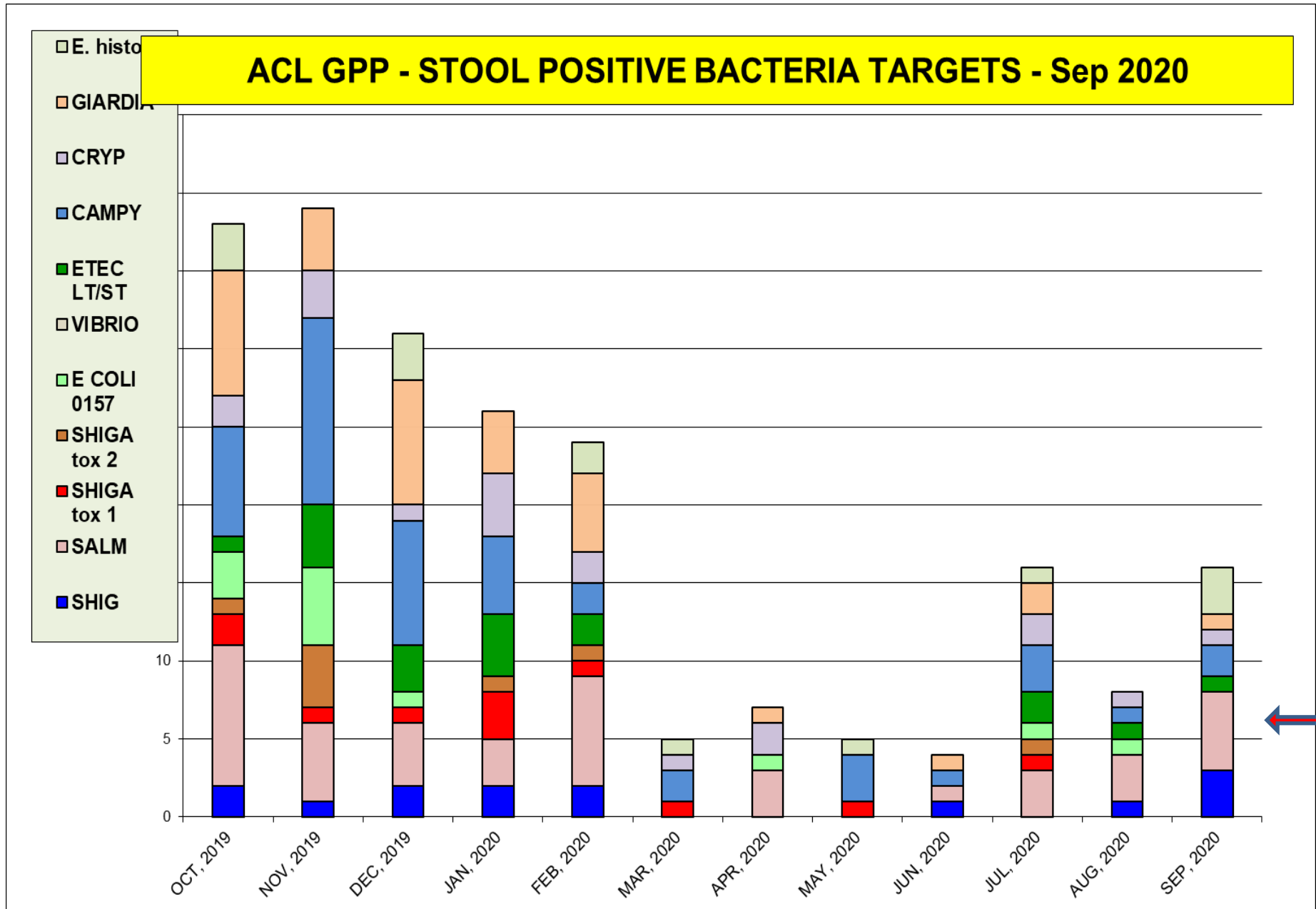
Select Commercial Laboratories Reporting to CDC:
 Number of Specimens Tested and Percent Positive for SARS-CoV-2
 March 29, 2020 – September 26, 2020



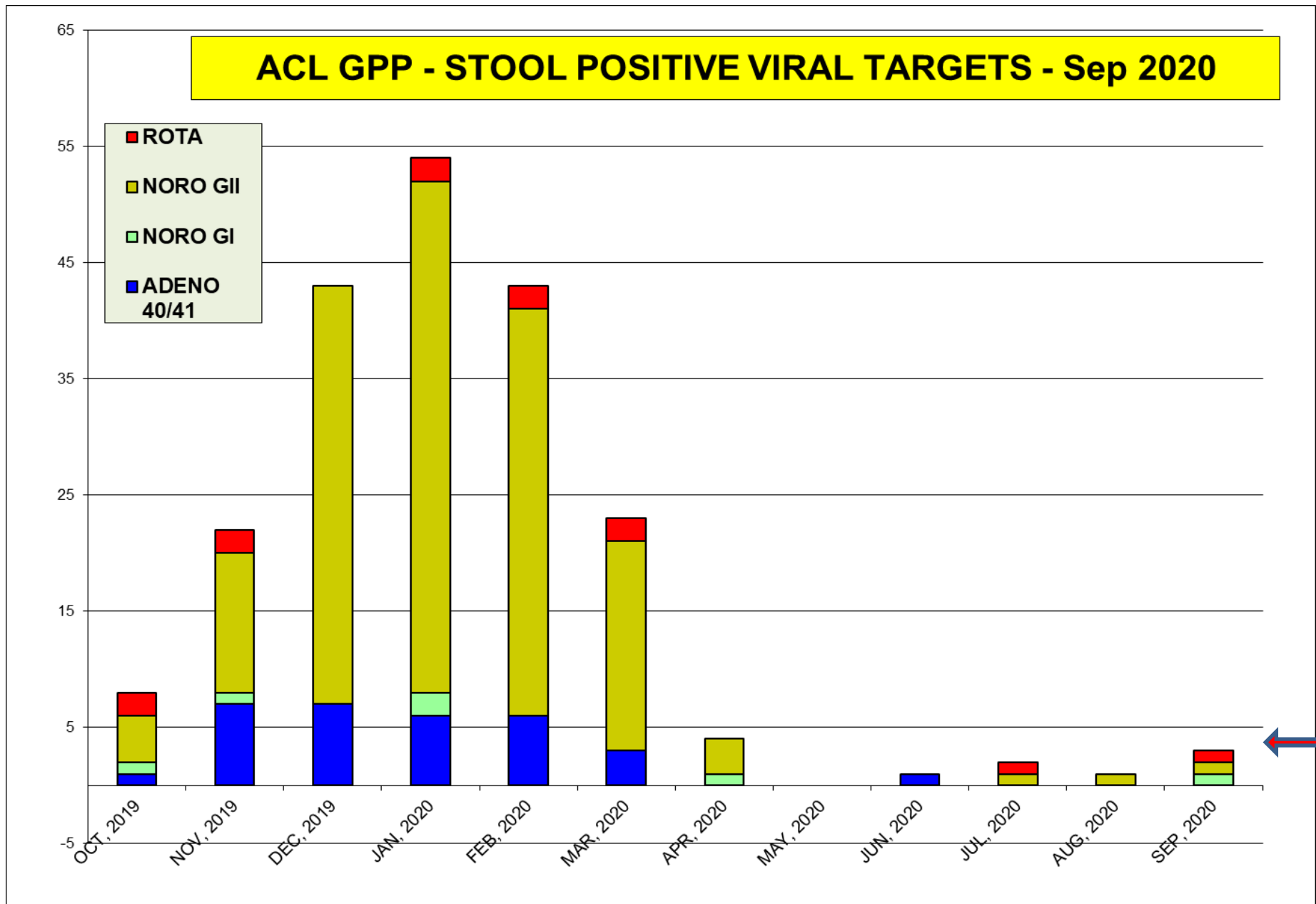
The most prevalent target - all CSF viruses pos rate is 9 % (HSV1 and HHV6)



The most prevalent bacterial targets in Sep (Salmonella and E.histo)



The most prevalent virus targets in Sep - Norovirus



Sep 2020 positivity rate (%)

Bacterial Vag.	Candida spp.	Candida glab.	Trich. vag	M. genitalium
29	23	2	2	5

Women Health SwabOne - Prevalence rate (%)

