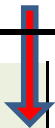


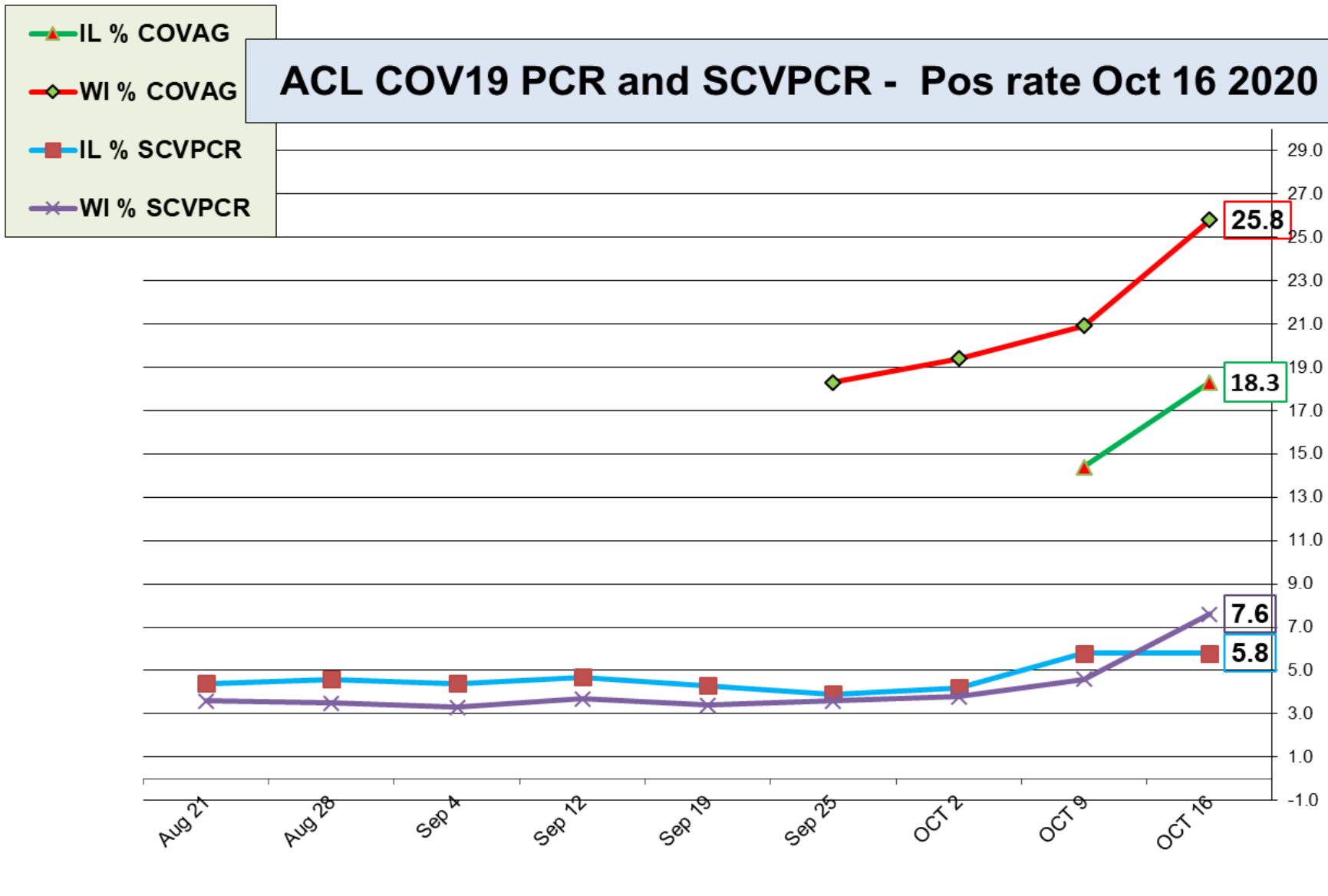
Respiratory Pathogens - 10 16 2020



Week	InfA-H1	InfA-H3	2009 H1N1	Inf B	RSV	All Para	EV / Rhino	Meta pneumo	Adeno	All Corona	Bocca	Myc. pneumo	Chlam. pneumo.	Leg. pneumo.	BP / BPP	Total Pos	POS FLU	Total	ACL RPPNL	US %FLU	IL/W PCR	ACL FLUPCR
OCT 16	0	0	0	0	0	0	14	1	1	0	2	0	0	0	0	17	0	185	0.0	n/a	n/a	0.0
OCT 9	0	0	0	0	0	0	9	2	0	0	3	0	0	0	0	14	0	64	0.0	0.3	0.3	0.0
OCT 2	0	0	0	0	0	0	5	0	0	0	1	0	0	1	0	7	0	65	0.0	0.3	0.2	0.0
Sep 25	0	0	0	0	0	0	7	0	2	0	0	0	0	2	0	11	0	111	0.0	0.3	0.0	0.0
Sep 19	0	0	0	0	0	0	4	0	0	0	0	0	0	0	0	4	0	28	0.0	0.4	0.3	0.0
Sep 12	0	0	0	0	0	0	0	1	0	0	0	0	0	0	0	1	0	58	0.0	0.2	0.0	0.0
Sep 4	0	0	0	0	0	0	2	0	0	0	0	0	0	0	0	2	0	146	0.0	0.2	0.5	0.0
Aug 28	0	0	0	0	0	0	3	0	0	0	0	0	0	1	0	4	0	55	0.0	0.3	0.4	0.0
Aug 21	0	0	0	0	0	0	3	0	0	0	0	0	0	0	0	3	0	32	0.0	0.2	1.0	0.0
Aug 14	0	0	0	0	0	0	1	0	0	0	0	0	0	1	0	2	0	57	0.0	0.2	0.2	0.0
Aug 7	0	0	0	0	0	0	3	0	0	1	0	0	1	0	0	5	0	112	0.0	0.2	0.1	0.0
July 31	0	0	0	0	0	0	2	0	0	0	0	0	0	0	0	0	0	114	0.0	0.1	0.0	0.0
Jul 25	0	0	0	0	0	0	1	0	0	0	0	0	0	0	0	0	0	53	0.0	0.1	0.4	0.0

SARS-COV-2					RSV A/B				FLU A/B	
Week	IL % SCVPCR	WI % SCVPCR	IL % COVAG	WI % COVAG	IL % RSVPCR	WI % RSVPCR	IL % RSVAG	WI % RSVAG	IL % FLUPCR	WI % FLUPCR
OCT 16	5.8	7.6	18.3	25.8	0	0	0	0	0	0
OCT 9	5.8	4.6	14.4	20.9	0	0	0	0	0	0
OCT 2	4.2	3.8	n/a	19.4	0	0	0	0	0	0
Sep 25	3.9	3.6	n/a	18.3	0	0	0	0	0	0
Sep 19	4.3	3.4	n/a	n/a	0	0	0	0	0	0
Sep 12	4.7	3.7	n/a	n/a	0	0	0	0	0	0
Sep 4	4.4	3.3	n/a	n/a	0	0	0	0	0	0
Aug 28	4.6	3.5	n/a	n/a	0	0	0	0	0	0
Aug 21	4.4	3.6	n/a	n/a	0	0	0	0	0	0

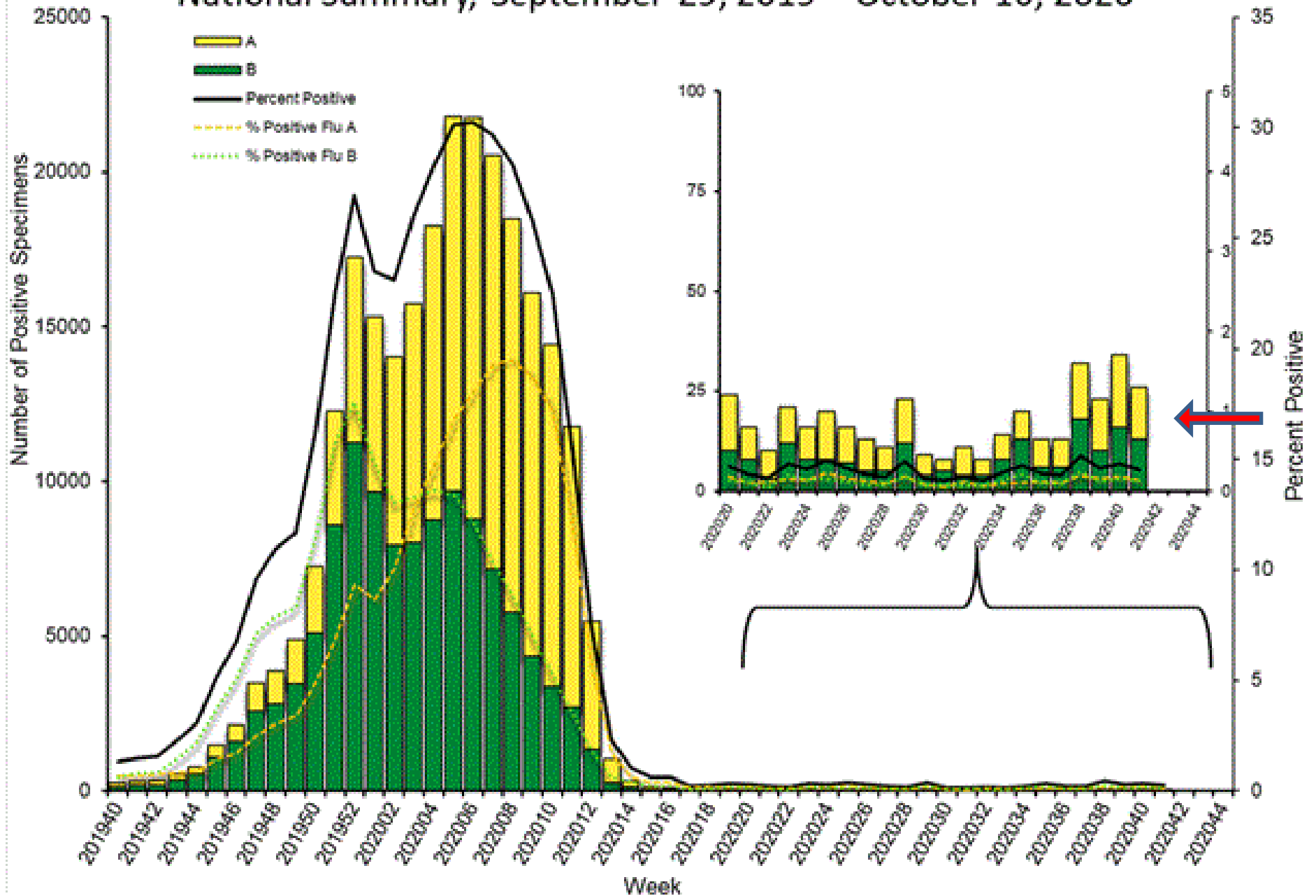
ACL COV19 PCR and SCVPCR - Pos rate Oct 16 2020



COVAG Antigen testing – is performed at Urgent Care sites (WI started **Sep 25th** and IL started **Oct 3rd** 2020).

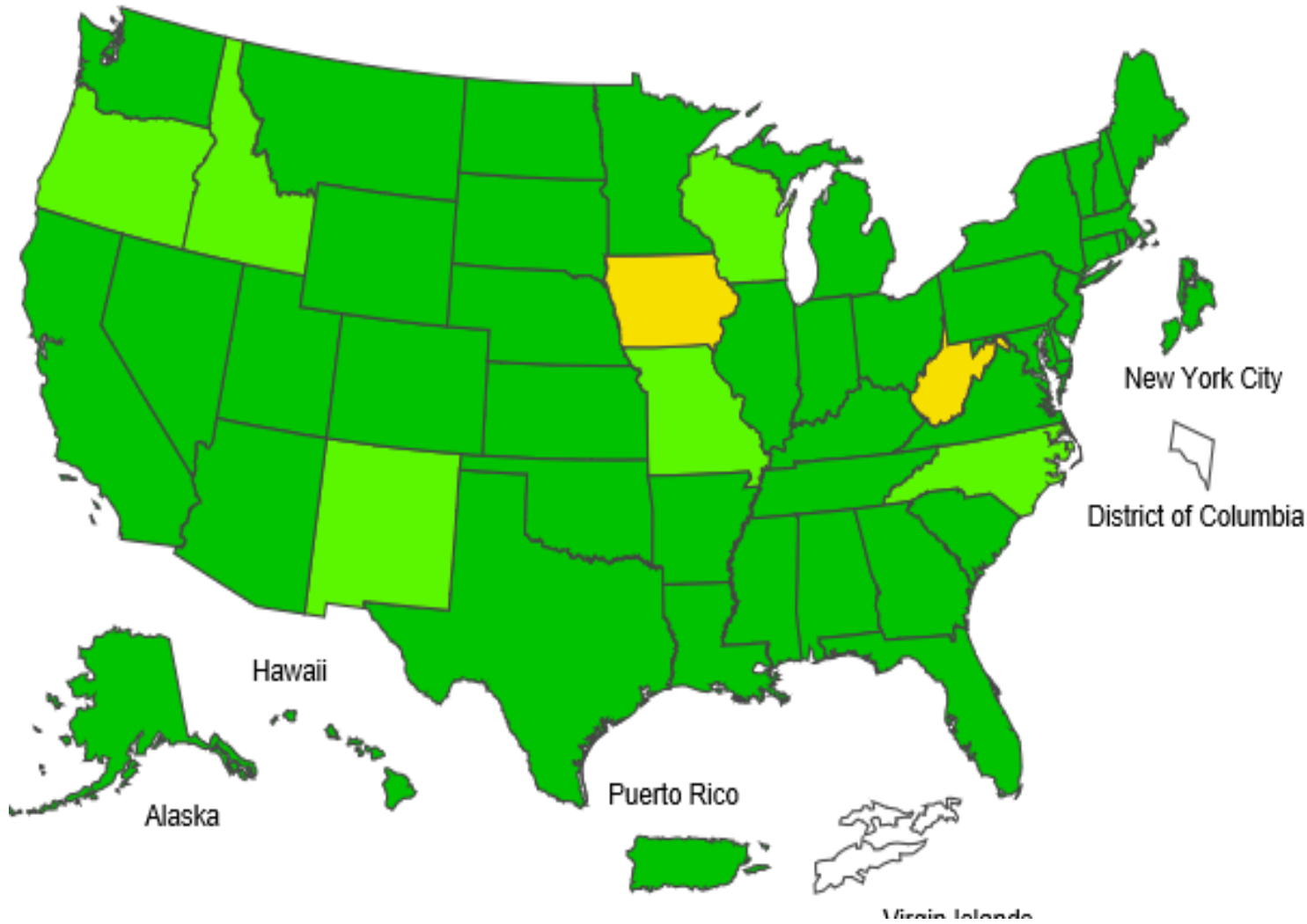
SCVPCR - Rapid PCR - test is performed using Cepheid PCR at AAH Hospital sites.

Influenza Positive Tests Reported to CDC by U.S. Clinical Laboratories, National Summary, September 29, 2019 – October 10, 2020



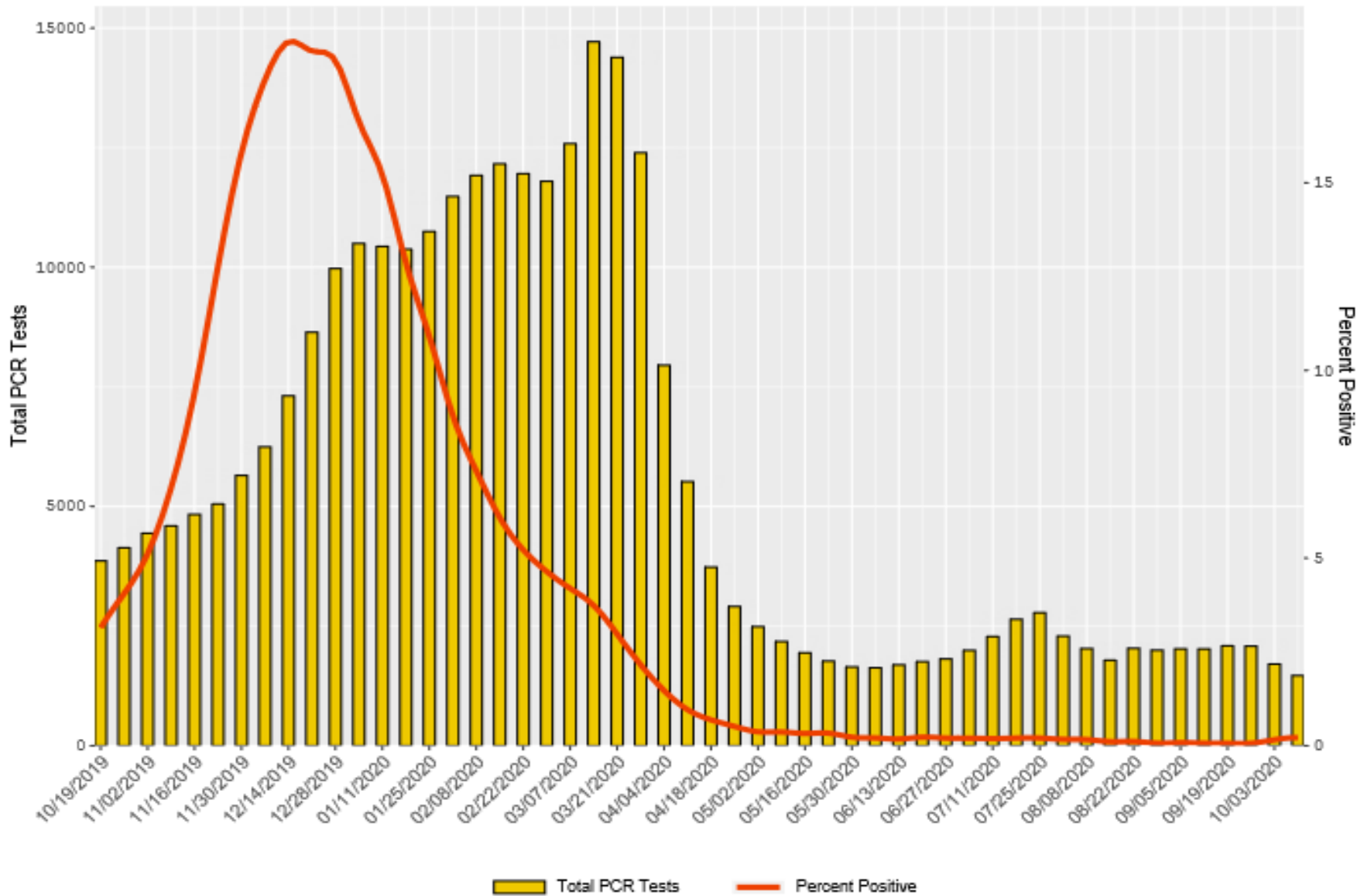
2020-21 Influenza Season Week 41 ending Oct 10, 2020

ILI Activity Level



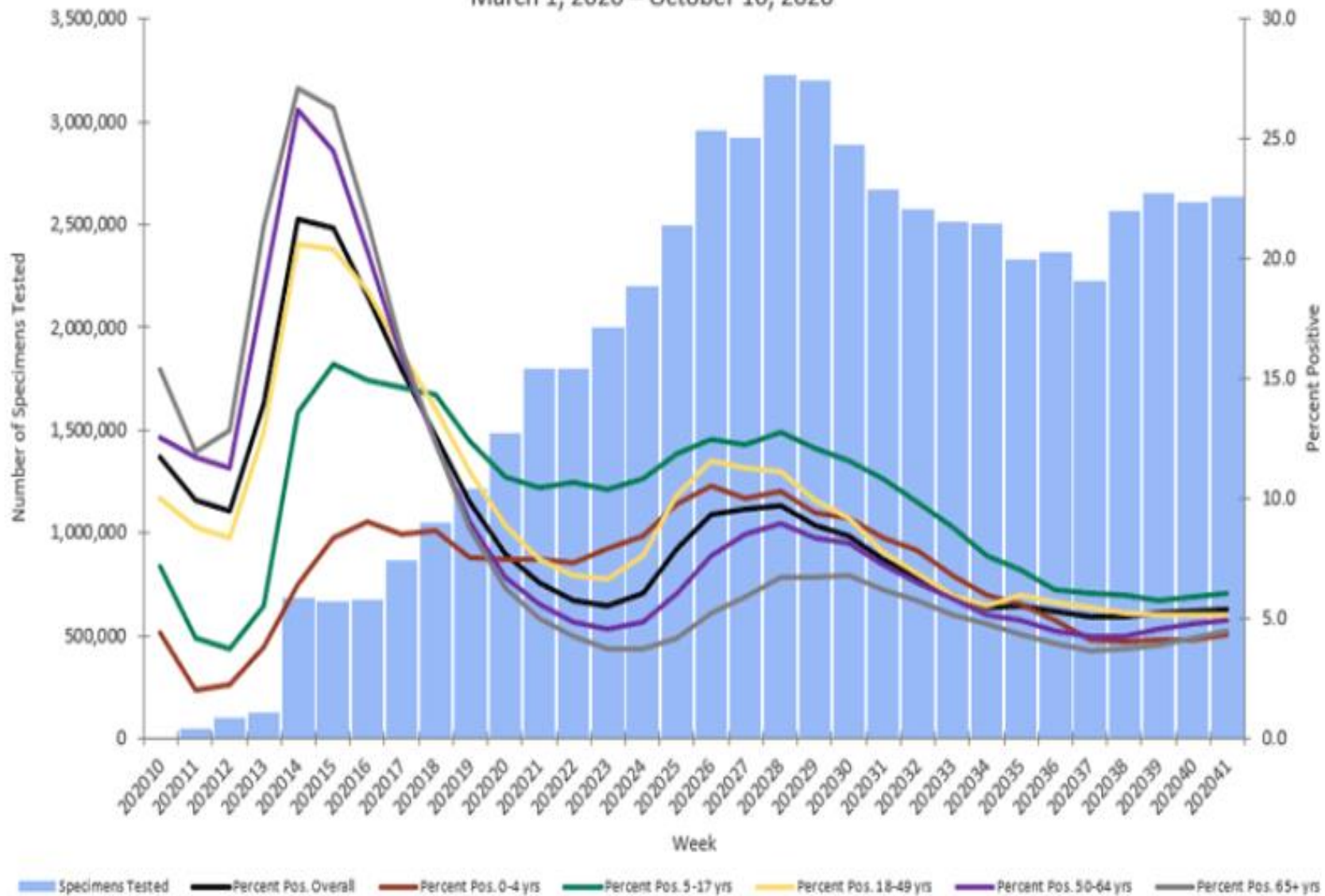
CDC data for RSV by PCR Oct 10, 2020

RSV PCR for HHS Region 5 - Chicago (3 week average)

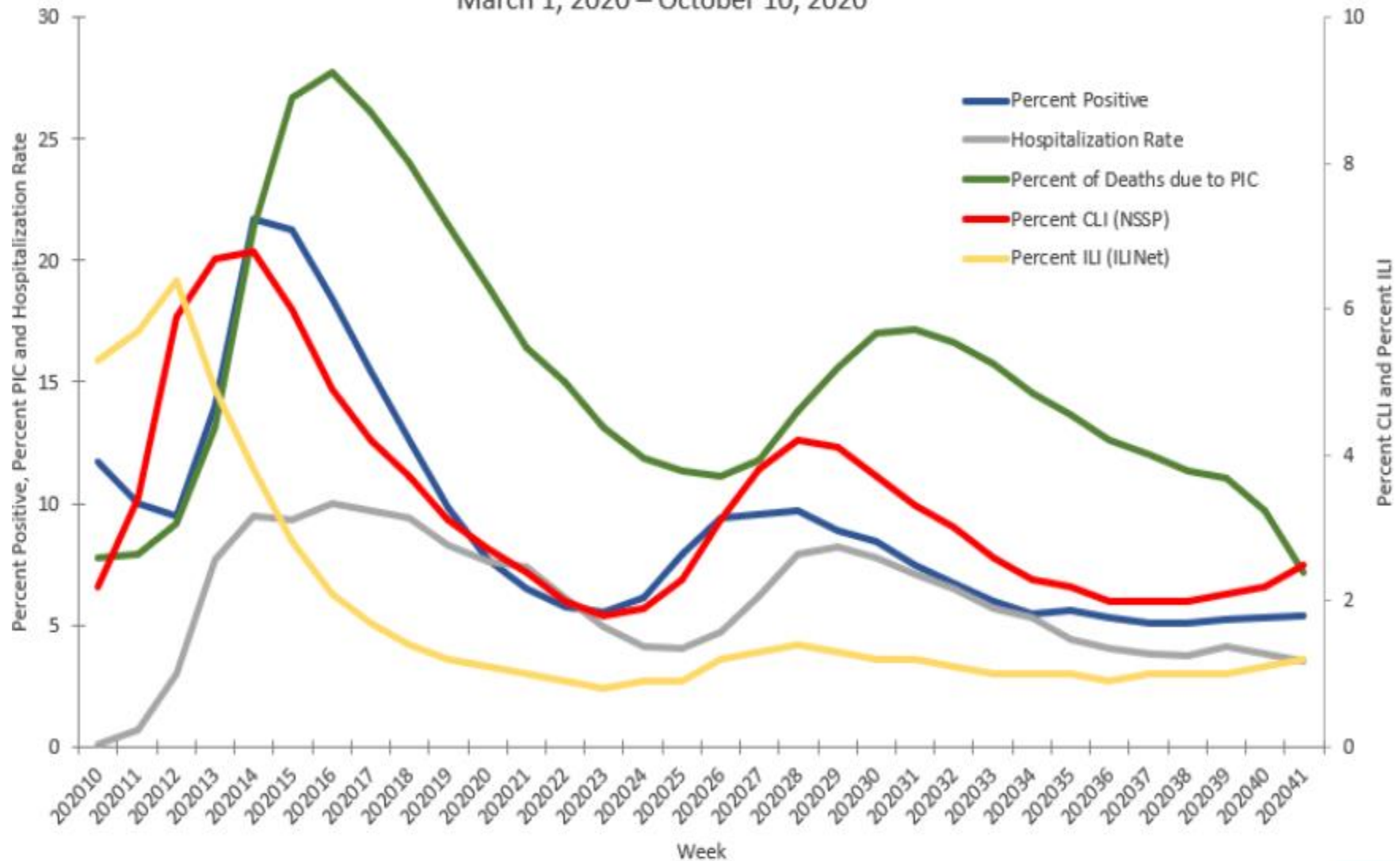


Number of Specimens Tested and Percent Positive for SARS- CoV-2: Combined Laboratories Reporting to CDC (Public Health Laboratories and a Subset of Commercial and Clinical Laboratories)

March 1, 2020 – October 10, 2020



National COVID-19 Activity Indicators:
 Laboratory, Outpatient/Emergency Department, Hospitalization and Mortality Data
 March 1, 2020 – October 10, 2020*



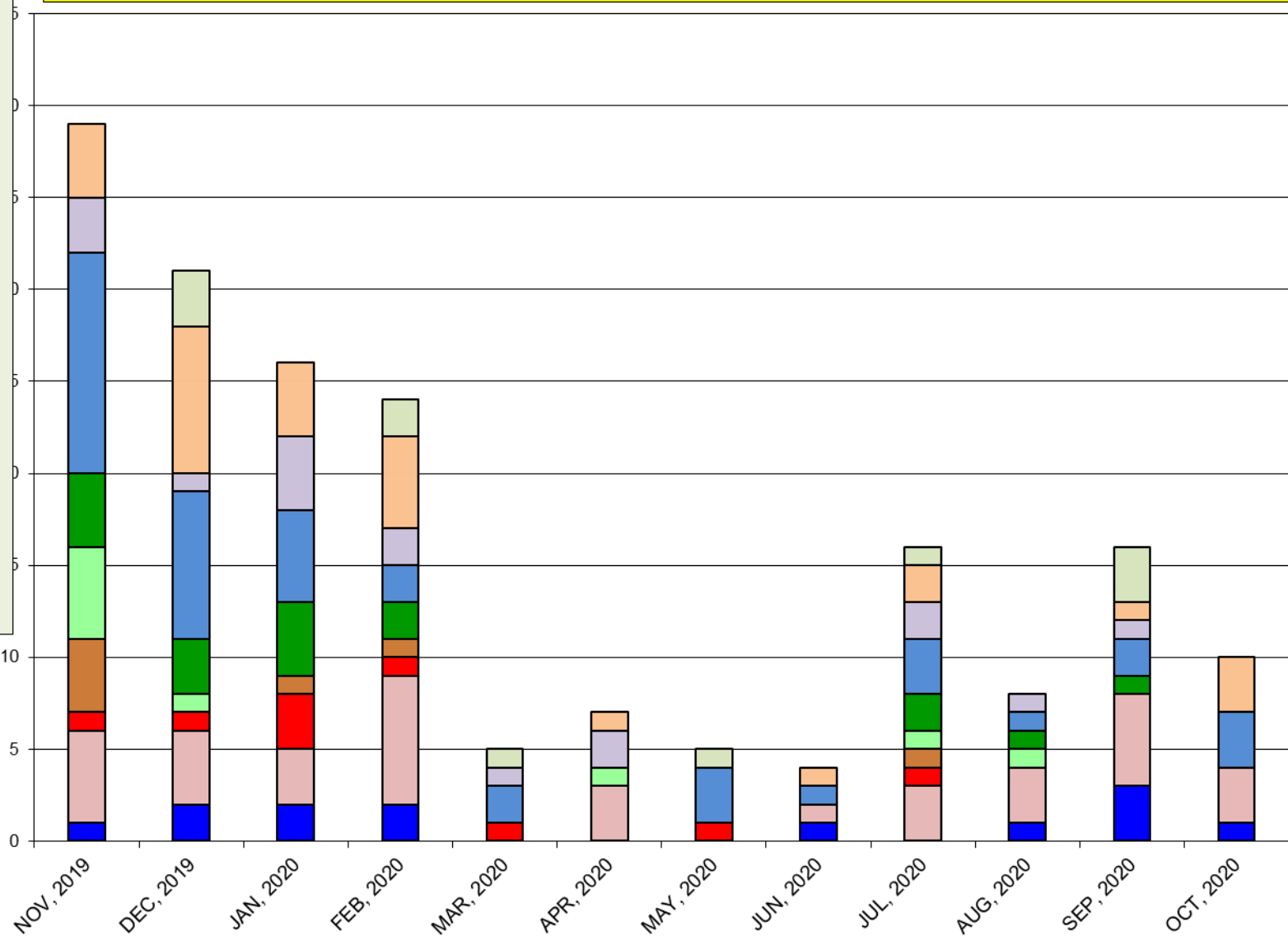
*Data are preliminary and may change as more reports are received.



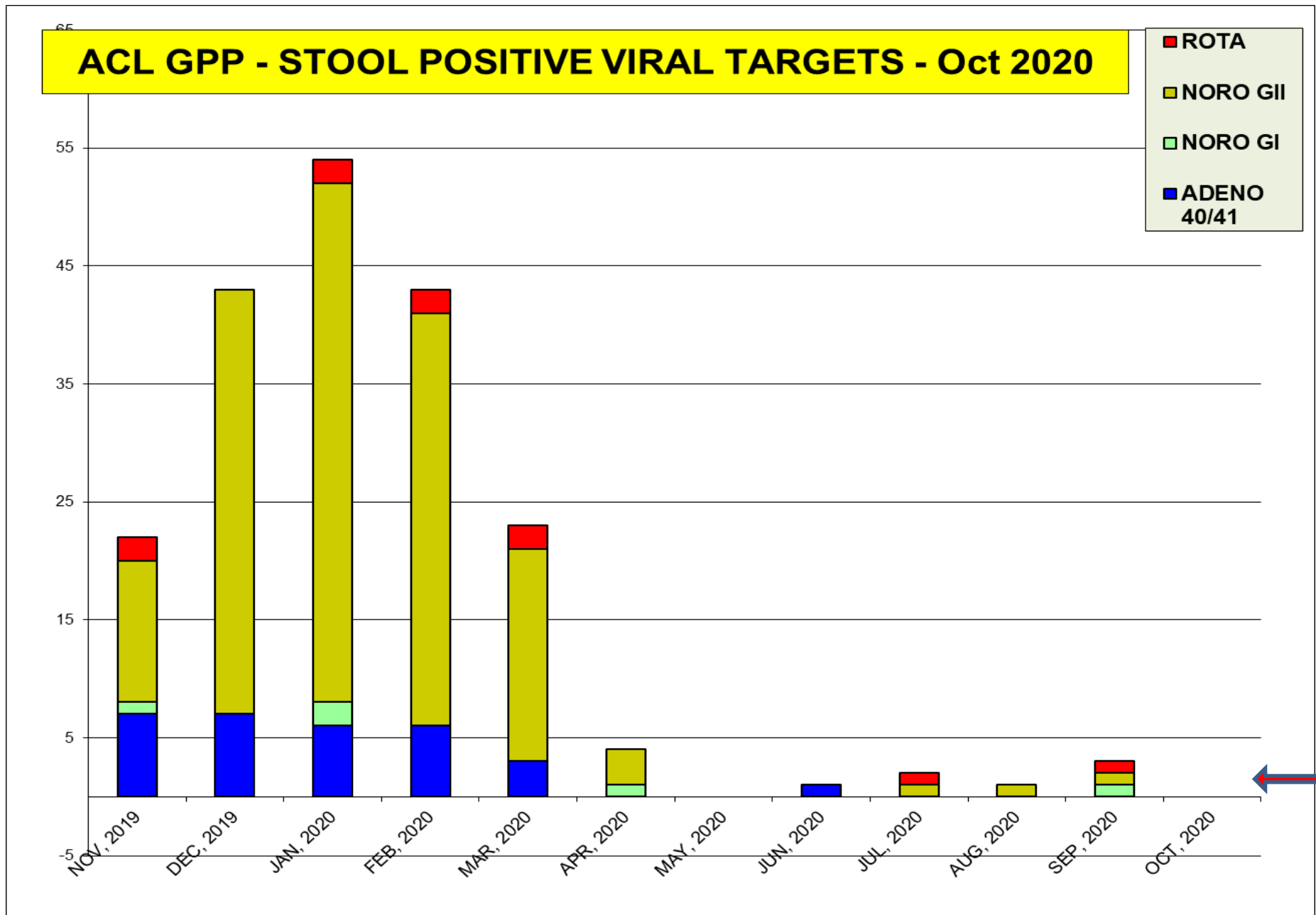
The most prevalent bacterial targets (*Salmonella* and *Campy*)

ACL GPP - STOOL POSITIVE BACTERIAL TARGETS - Oct 2020

- E. histo
- GIARDIA
- CRYP
- CAMPY
- ETEC LT/ST
- VIBRIO
- E COLI 0157
- SHIGA tox 2
- SHIGA tox 1
- SALM
- SHIG



The most prevalent virus targets - none



Women's Health - Oct 2020 positivity rate (%)				
Bacterial Vag.	Candida spp.	Candida glab.	Trich. vag	M. genitalium
24	20	1	7	1

