

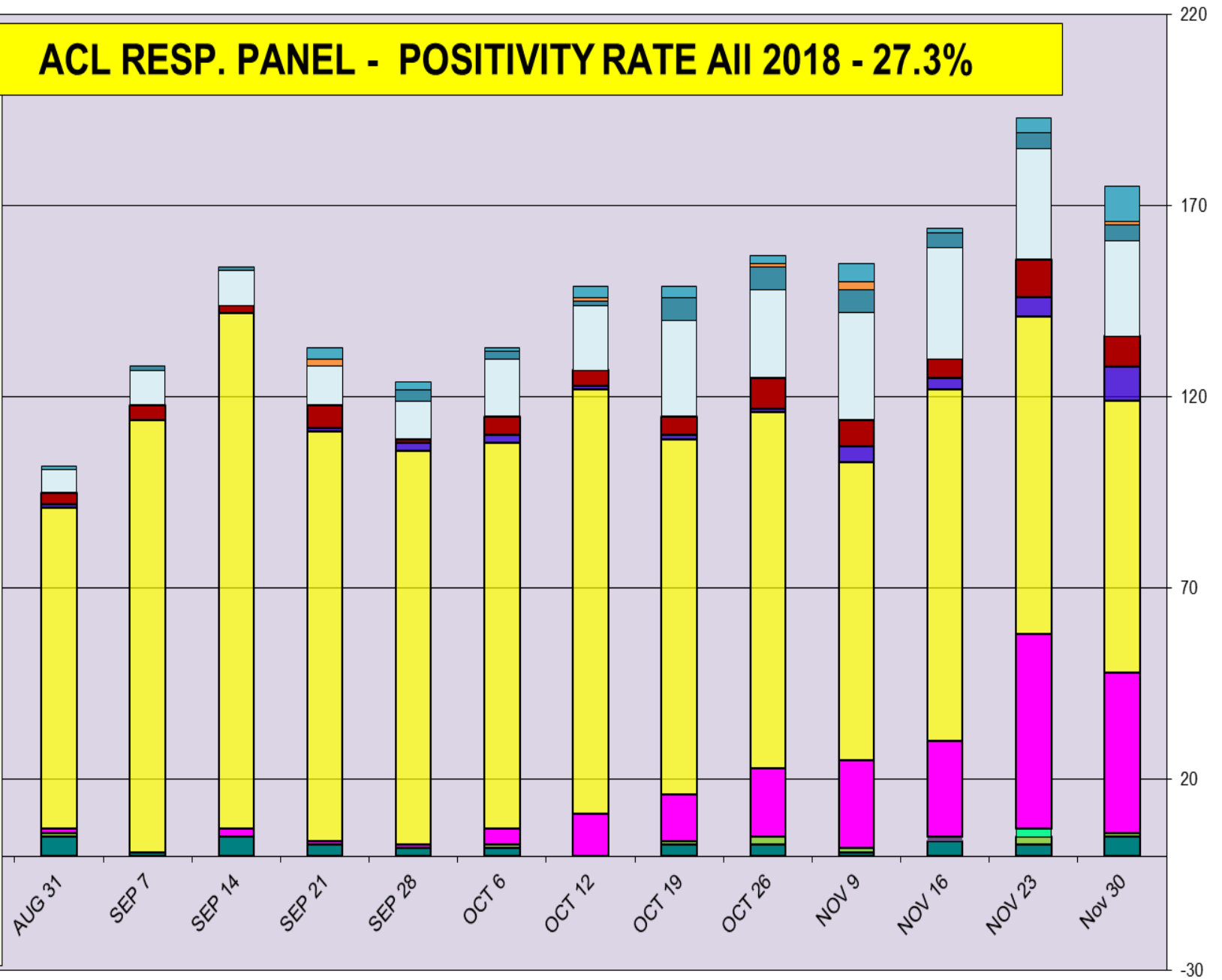
## Respiratory Pathogens Data Aug 24 - Nov 30 2018

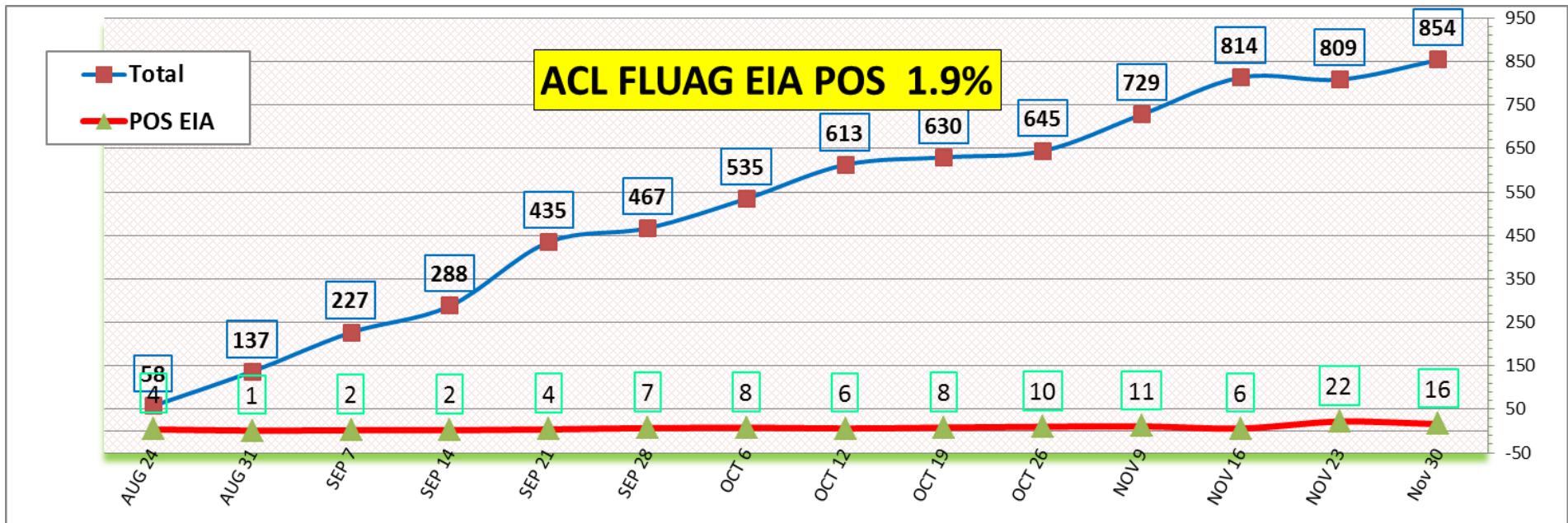
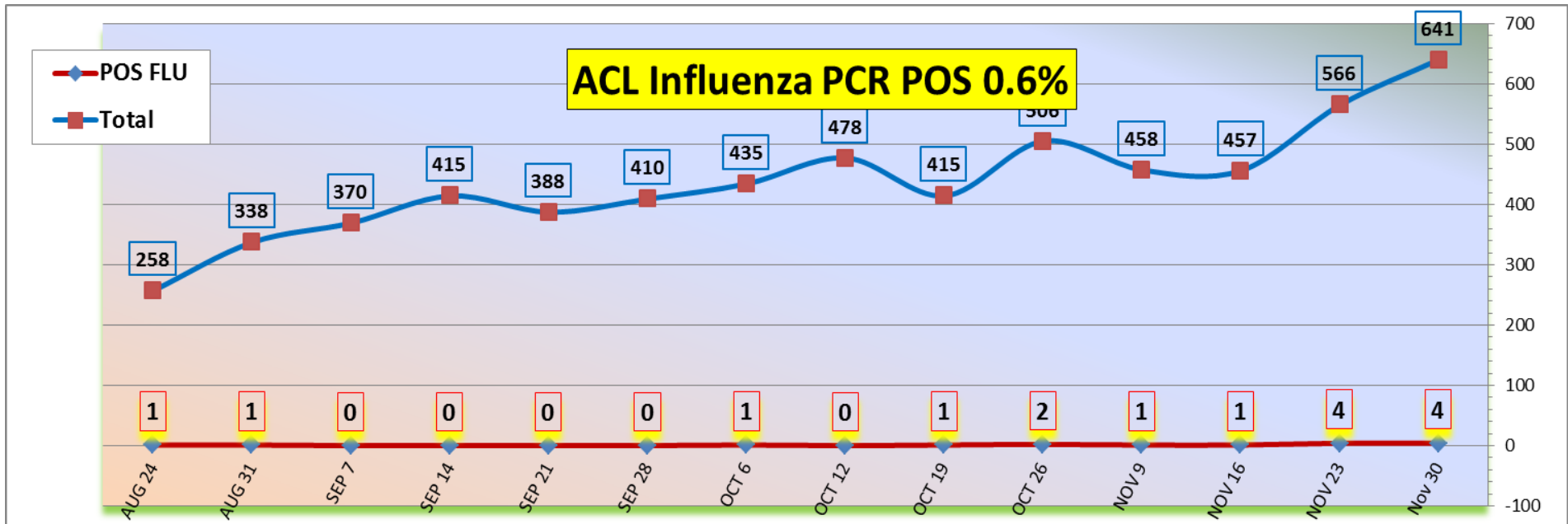
Week Beginning	InfA-H1	InfA-H3	2009 H1N1	Inf B	RSV	All Para	EV/ Rhino	Meta pneumo	Adeno	All Corona	Bocca	Mycoplasma	Chlamydia	Total Pos	POS FLU	Total	ACL %FLU	US %FLU	IL/WI PCR	Sofia EIA
Nov 30	0	0	1	0	42	25	71	9	8	9	5	4	1	175	4	641	0.6	n/a	n/a	1.9
NOV 23	0	2	2	0	51	29	83	5	10	4	3	4	0	193	4	566	0.7	2.4	1.6	2.7
NOV 16	1	0	0	0	25	29	92	3	5	1	4	4	0	164	1	457	0.2	1.7	1.5	1.9
NOV 9	0	0	1	0	23	28	78	4	7	5	1	6	2	155	1	458	0.2	1.2	0.9	1.9
OCT 26	0	0	2	0	18	23	93	1	8	2	3	6	1	157	2	506	0.4	0.9	0.7	1.6
OCT 19	0	0	1	0	12	25	93	1	5	3	3	6	0	149	1	415	0.2	0.8	0.5	1.3
OCT 12	0	0	0	0	11	17	111	1	4	3	0	1	1	149	0	478	0.0	0.6	0.4	1.0
OCT 6	0	0	1	0	4	15	101	2	5	1	2	2	0	133	1	435	0.2	0.8	0.5	1.5
SEP 28	0	0	0	0	1	10	103	2	1	2	2	3	0	124	0	410	0.0	0.9	0.6	1.5
SEP 21	0	0	0	0	1	10	107	1	6	3	3	0	2	133	0	388	0.0	0.8	0.9	0.9
SEP 14	0	0	0	0	2	9	135	0	2	0	5	1	0	154	0	415	0.0	0.7	1.0	0.7
SEP 7	0	0	0	0	0	9	113	0	4	0	1	1	0	128	0	370	0.0	1.7	0.5	0.9
AUG 31	0	0	1	0	1	6	84	1	3	1	5	0	0	102	1	338	0.3	1.8	0.7	0.7
AUG 24	0	1	0	0	1	3	67	1	0	0	2	0	0	75	1	258	0.4	1.6	0.2	6.9

Flu PCR  
% Rate

# ACL RESP. PANEL - POSITIVITY RATE All 2018 - 27.3%

- All Corona
- Chla mydia
- Myco plasma
- All Para
- Adeno
- Meta pneumo
- EV / Rhino
- RSV
- Inf B
- InfA-H3
- 2009 H1N1
- InfA-H1
- Bocca





## Correlation between RPPNL (FLU PCR) and Sofia (FLUAG)

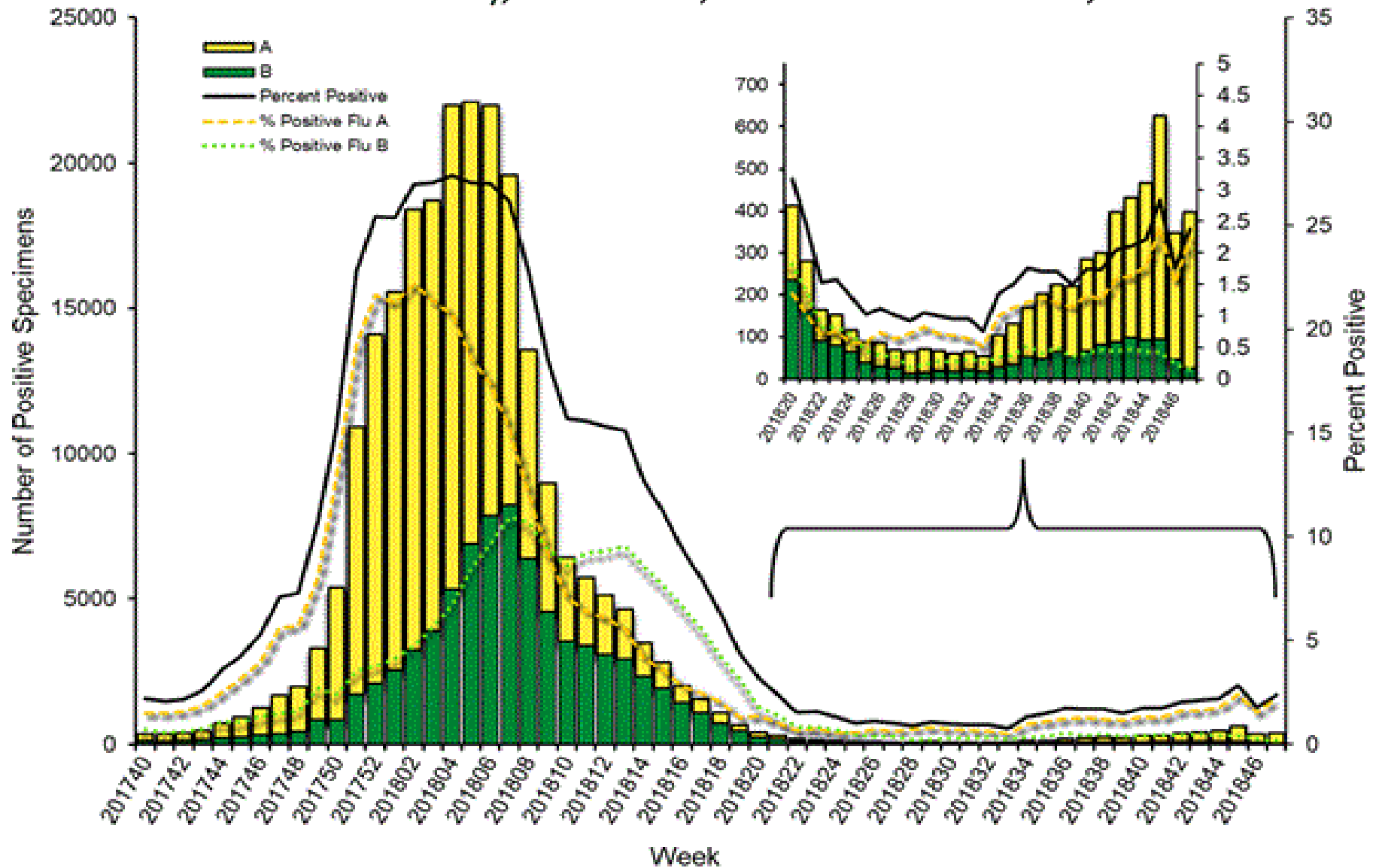
Accuracy for the beginning of the season is 99.2%

In the last seven weeks 630 samples were tested by both methods most of them negative, 8 samples were positive by EIA and 4 of them were confirmed by PCR.

Oct 14 2018 to Nov 30 2018				
FLUAG (Sofia) vs RPPNL (PCR) correlation				
		RPPNL		
		+	-	Total
FluAG	+	4	4	8
	-	0	622	622
		Total		630
%				
100.0	Clinical Sensitivity			
99.4	Clinical Specificity			
50.0	Positive Predictive Value (PPV)			
100.0	Negative Predicative Value (NPV)			
99.4	Accuracy			

*two of of positive samples were run 72 h apart*

### Influenza Positive Tests Reported to CDC by U.S. Clinical Laboratories, National Summary, October 1, 2017 – November 24, 2018

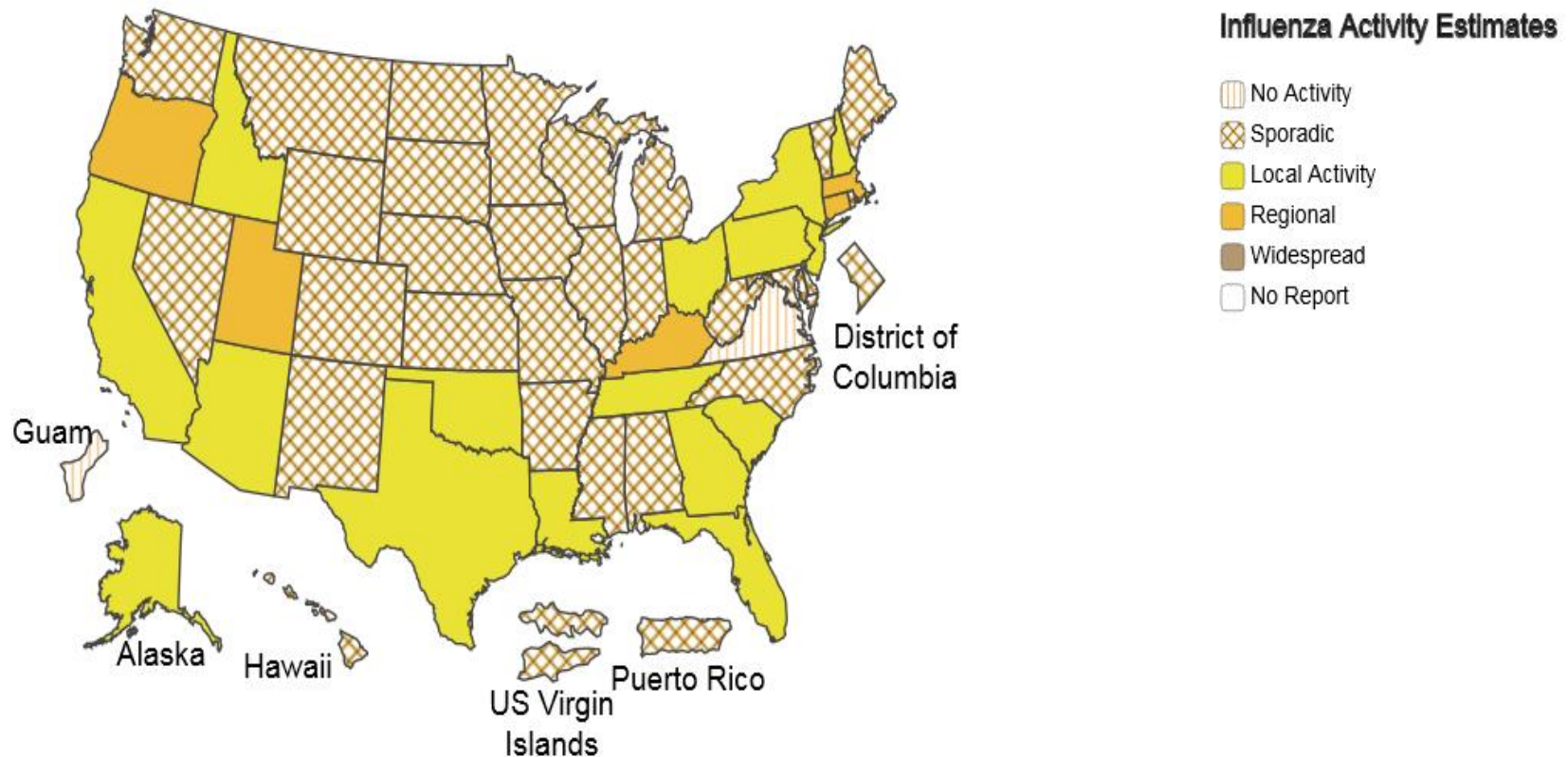




## A Weekly Influenza Surveillance Report Prepared by the Influenza Division

Weekly Influenza Activity Estimates Reported by State and Territorial Epidemiologists\*

Week Ending Nov 24, 2018 - Week 47



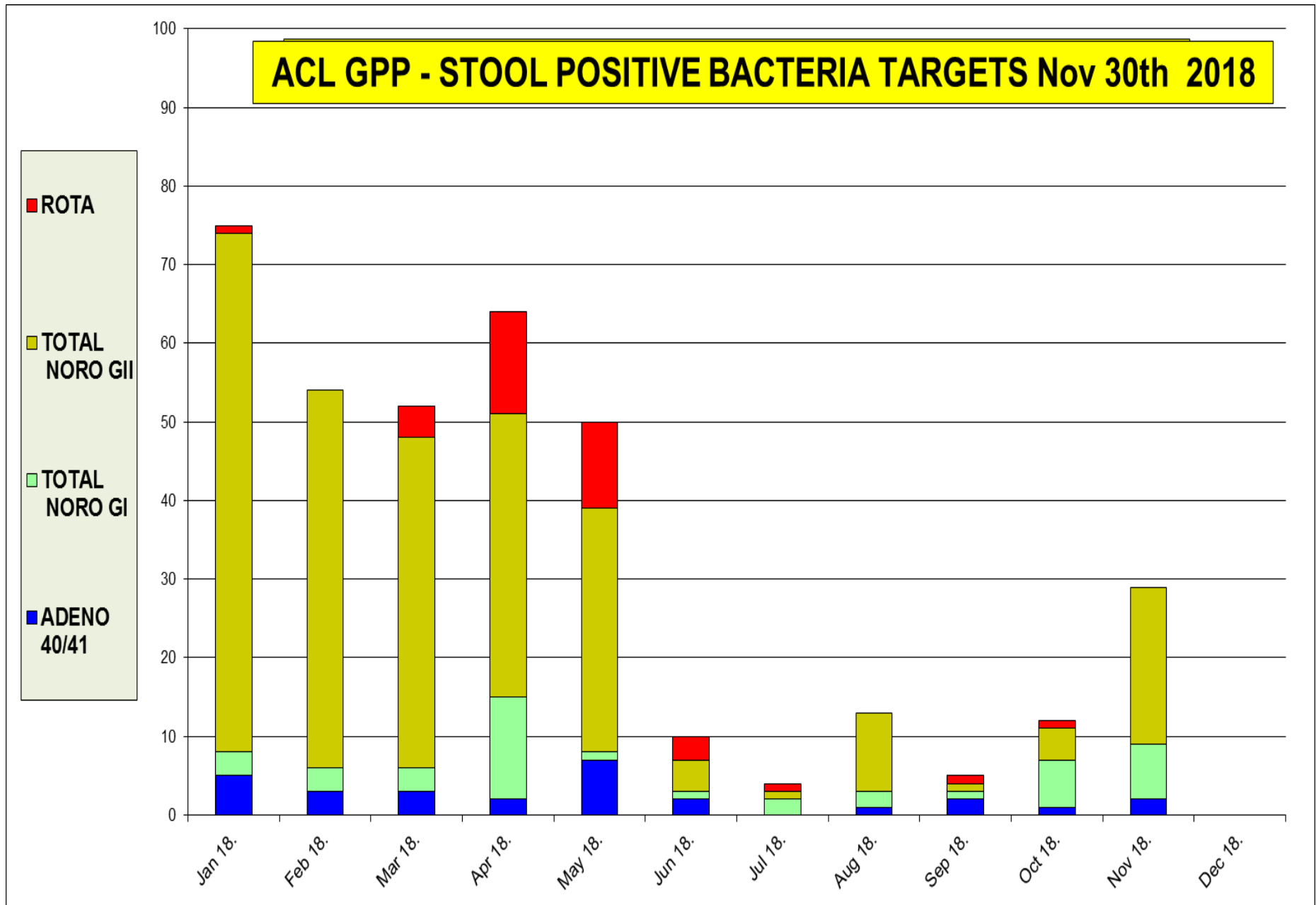
\*This map indicates geographic spread and does not measure the severity of influenza activity.



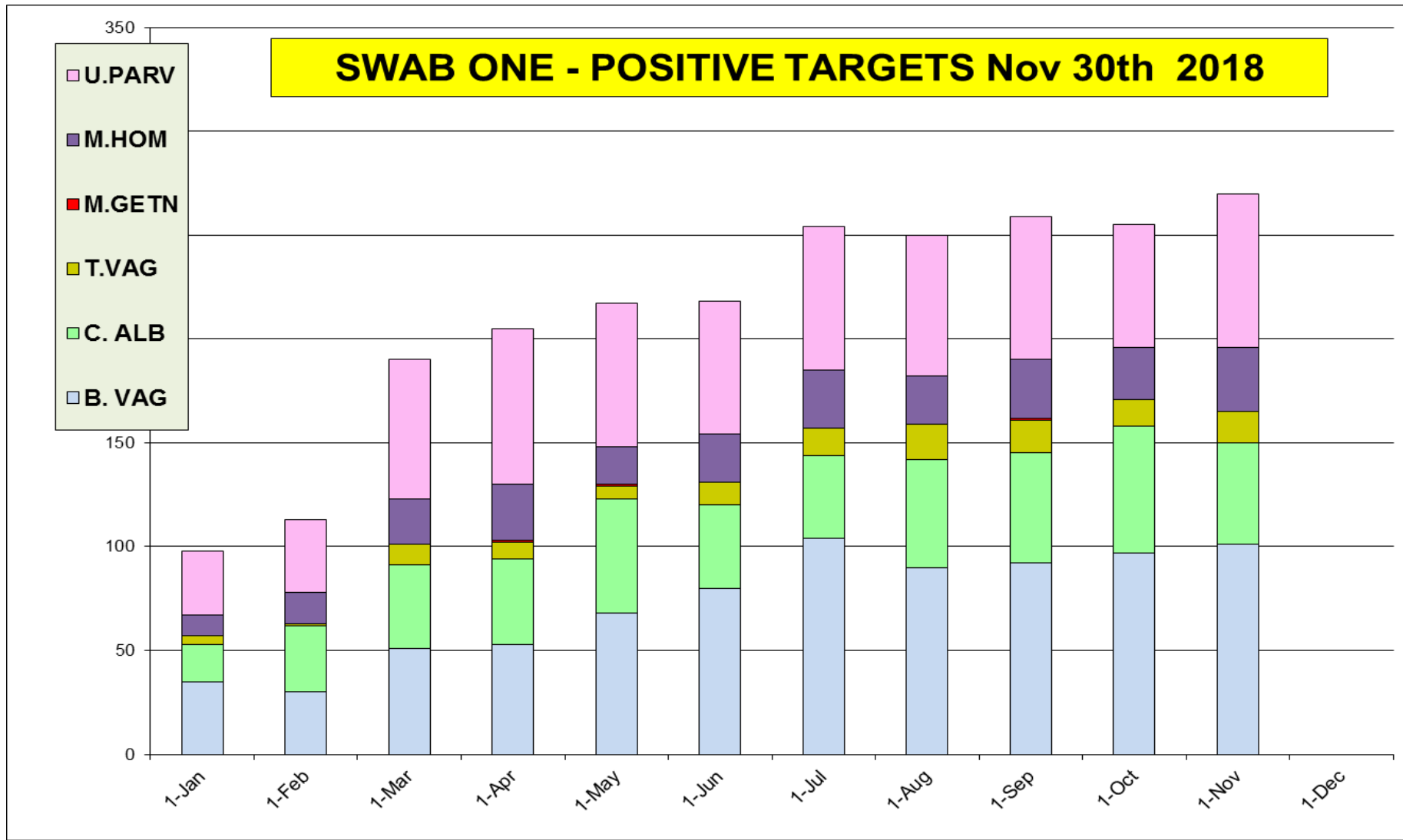




The most prevalent target as Nov 30<sup>th</sup> was Norovirus



	BV-Bacterial vagionosis	Candida albicans	Candida galbrata	Candida kruzei	T. vaginalis	M. genitalium	M. hominis	U. parvum	TOTAL % POS
% pos	<b>21.7</b>	<b>13.0</b>	<b>1.9</b>	<b>0.3</b>	<b>3.1</b>	<b>0.1</b>	<b>6.8</b>	<b>18.4</b>	<b>65.4</b>



## Neuraminidase Inhibitors Resistance in Samples Collected – May 20- Nov 24, 2018,

Per CDC website	Oseltamivir		Zanamivir		Peramivir	
	Virus Samples tested (n)	Resistant Viruses, (%)	Virus Samples tested (n)	Resistant Viruses, (%)	Virus Samples tested (n)	Resistant Viruses, (%)
Influenza A (H1N1)pdm09	<b>72</b>	<b>0</b>	<b>72</b>	<b>0</b>	<b>72</b>	<b>0</b>
Influenza A (H3N2)	<b>57</b>	<b>0</b>	<b>57</b>	<b>0</b>	<b>57</b>	<b>0</b>
Influenza B	<b>44</b>	<b>0</b>	<b>44</b>	<b>0</b>	<b>44</b>	<b>0</b>