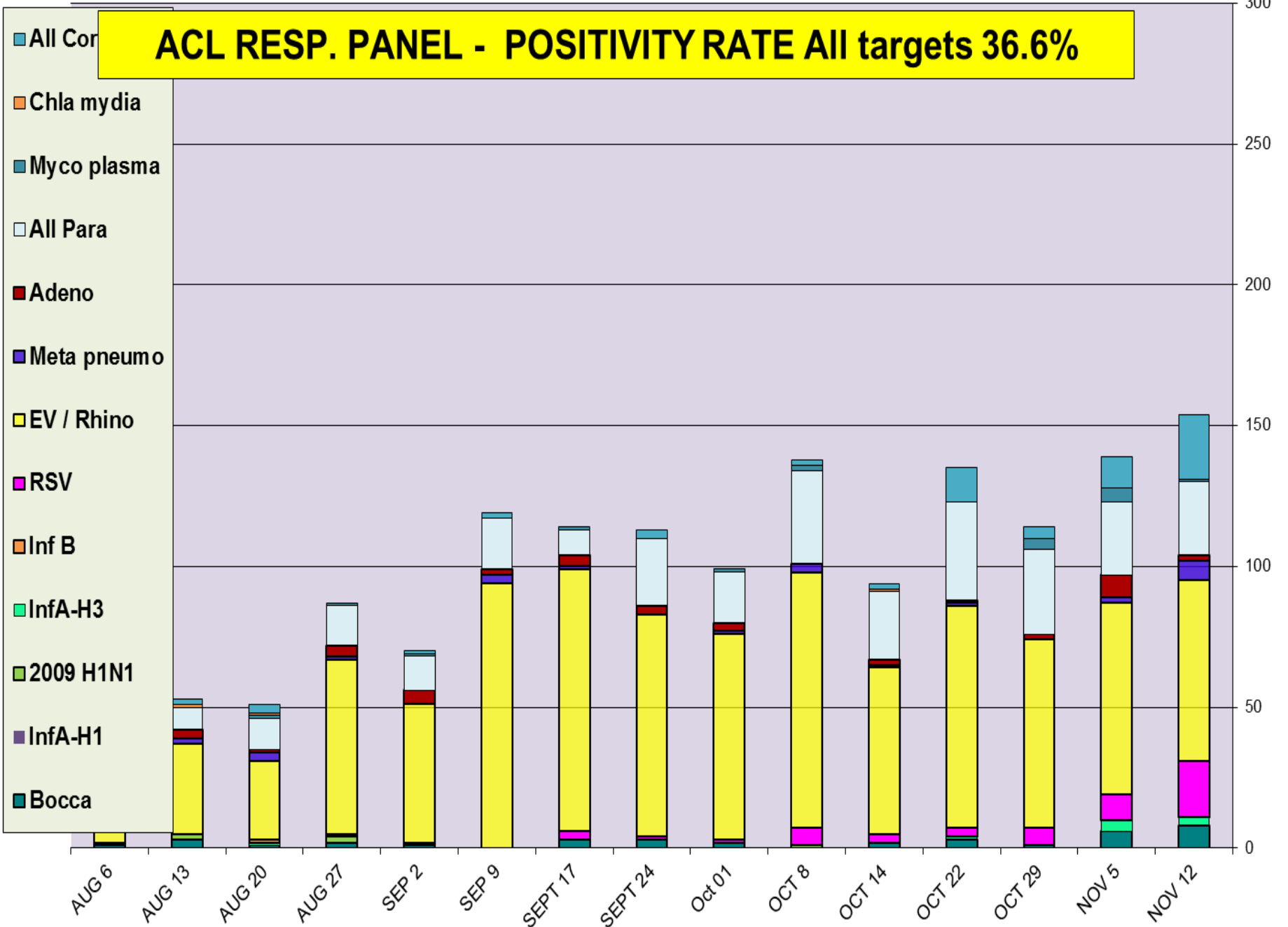


## Respiratory Pathogens Data Jul 30- Nov 18 2017

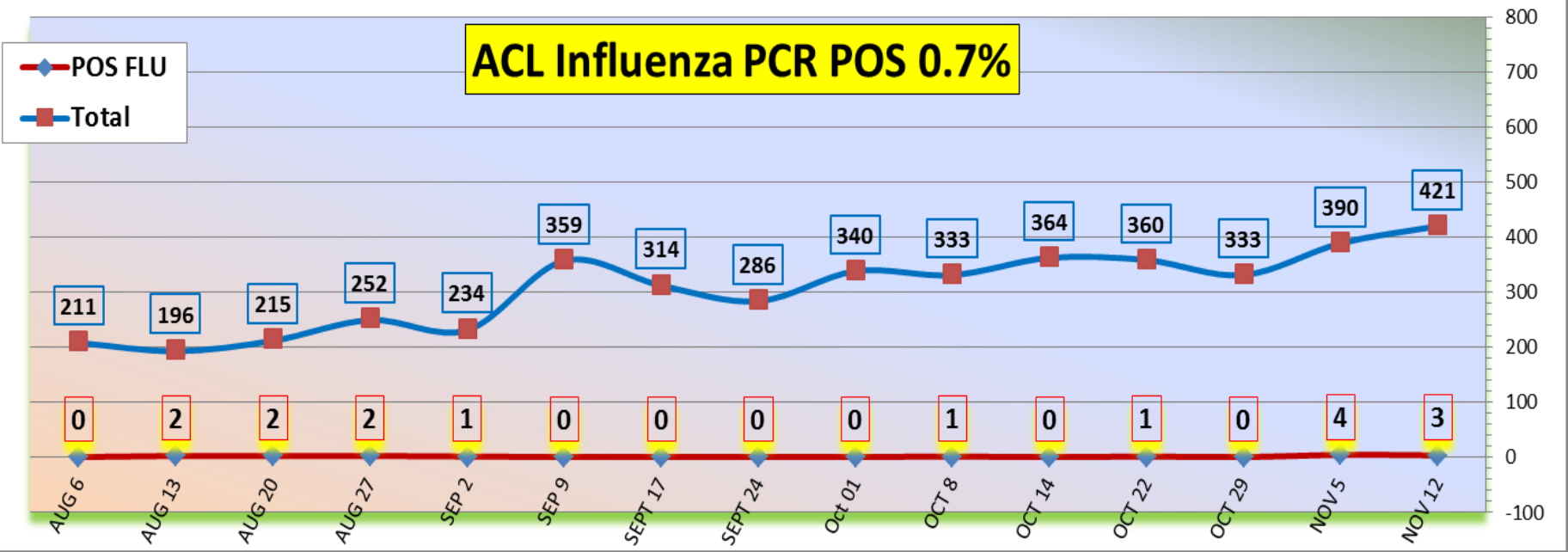
Week Beginning	InfA-H1	InfA-H3	2009 H1N1	Inf B	RSV	All Para	EV/ Rhino	Meta pneumo	Adeno	All Corona	Bocca	Mycoplasma	Chlamydia	Total Pos	POS FLU	Total	ACL %FLU	US %FLU	IL/WI %FLU	EIA %FLU
NOV 12	0	3	0	0	20	26	64	7	2	23	8	1	0	154	3	42	0.7	5.3	1.9	2.6
NOV 5	0	4	0	0	9	26	68	2	8	11	6	5	0	139	4	390	1.0	4.4	1.2	1.1
OCT 29	0	0	0	0	6	30	67	0	2	4	1	4	0	114	0	333	0.0	3.4	1.0	1.1
OCT 22	0	1	0	0	3	35	79	1	1	12	3	0	0	135	1	360	0.3	2.9	0.9	1.1
OCT 14	0	0	0	0	3	24	59	1	2	2	2	0	1	94	0	364	0.0	2.5	0.9	1.6
OCT 8	0	0	1	0	6	33	91	3	0	2	0	2	0	138	1	333	0.3	2.7	1.8	2.8
Oct 01	0	0	0	0	1	18	73	1	3	0	2	1	0	99	0	340	0.0	2.0	1.0	3.0
SEPT 24	0	0	0	0	1	24	79	0	3	3	3	0	0	113	0	286	0.0	1.6	1.2	1.7
SEPT 17	0	0	0	0	3	9	93	1	4	0	3	1	0	114	0	314	0.0	1.6	1.3	3.5
SEP 9	0	0	0	0	0	18	94	3	2	2	0	0	0	119	0	359	0.0	1.7	1.5	1.8
SEP 2	0	0	1	0	0	12	49	0	5	1	1	1	0	70	1	234	0.4	1.8	1.1	2.7
AUG 27	0	0	2	0	1	14	62	1	4	1	2	0	0	87	2	252	0.8	1.9	0.9	1.6
AUG 20	0	1	0	1	0	11	28	3	1	3	1	1	1	51	2	215	0.9	1.7	0.8	4.2
AUG 13	0	0	2	0	0	8	32	2	3	2	3	0	1	53	2	196	1.0	2.3	1.0	3.6
AUG 6	0	0	0	0	1	10	30	1	1	1	1	1	1	47	0	211	0.0	2.2	1.2	0.0
JULY 30	0	0	0	0	0	7	32	4	0	1	0	0	0	44	0	214	0.0	2.4	1.4	0.0

Flu PCR  
% Rate

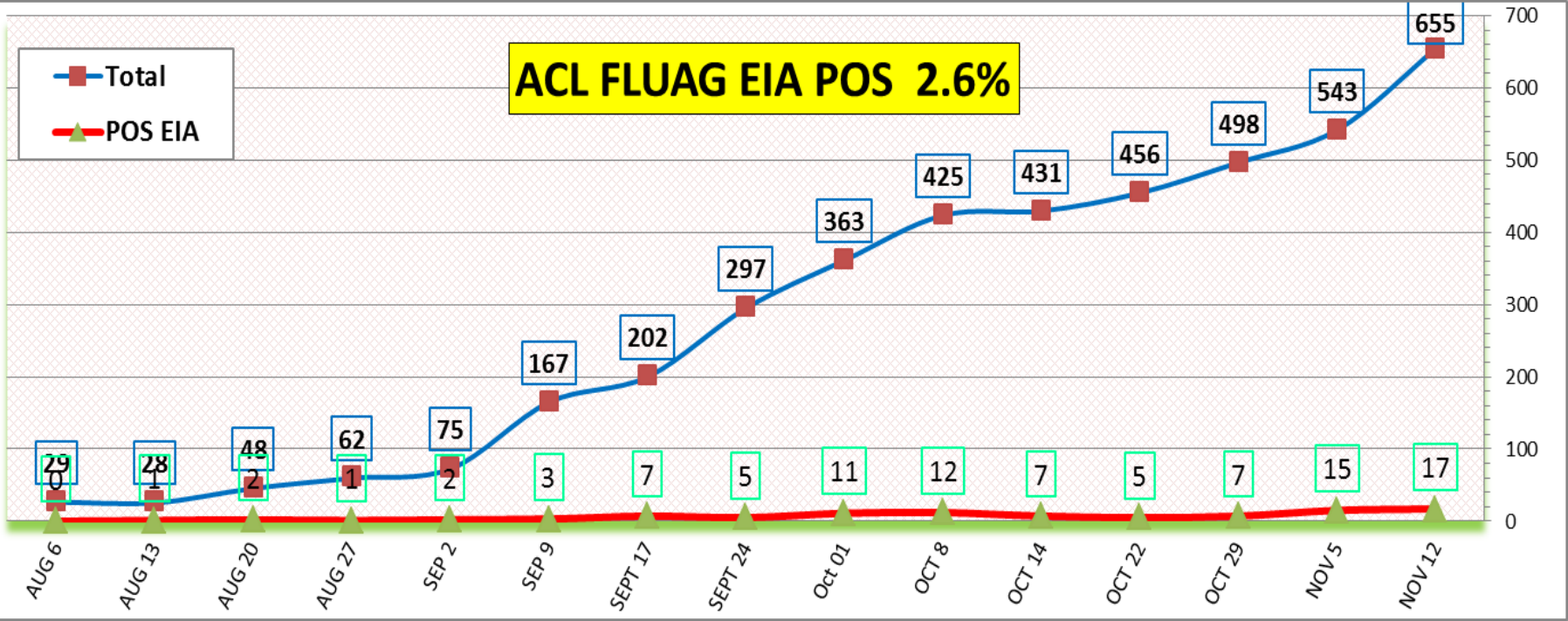
# ACL RESP. PANEL - POSITIVITY RATE All targets 36.6%



### ACL Influenza PCR POS 0.7%

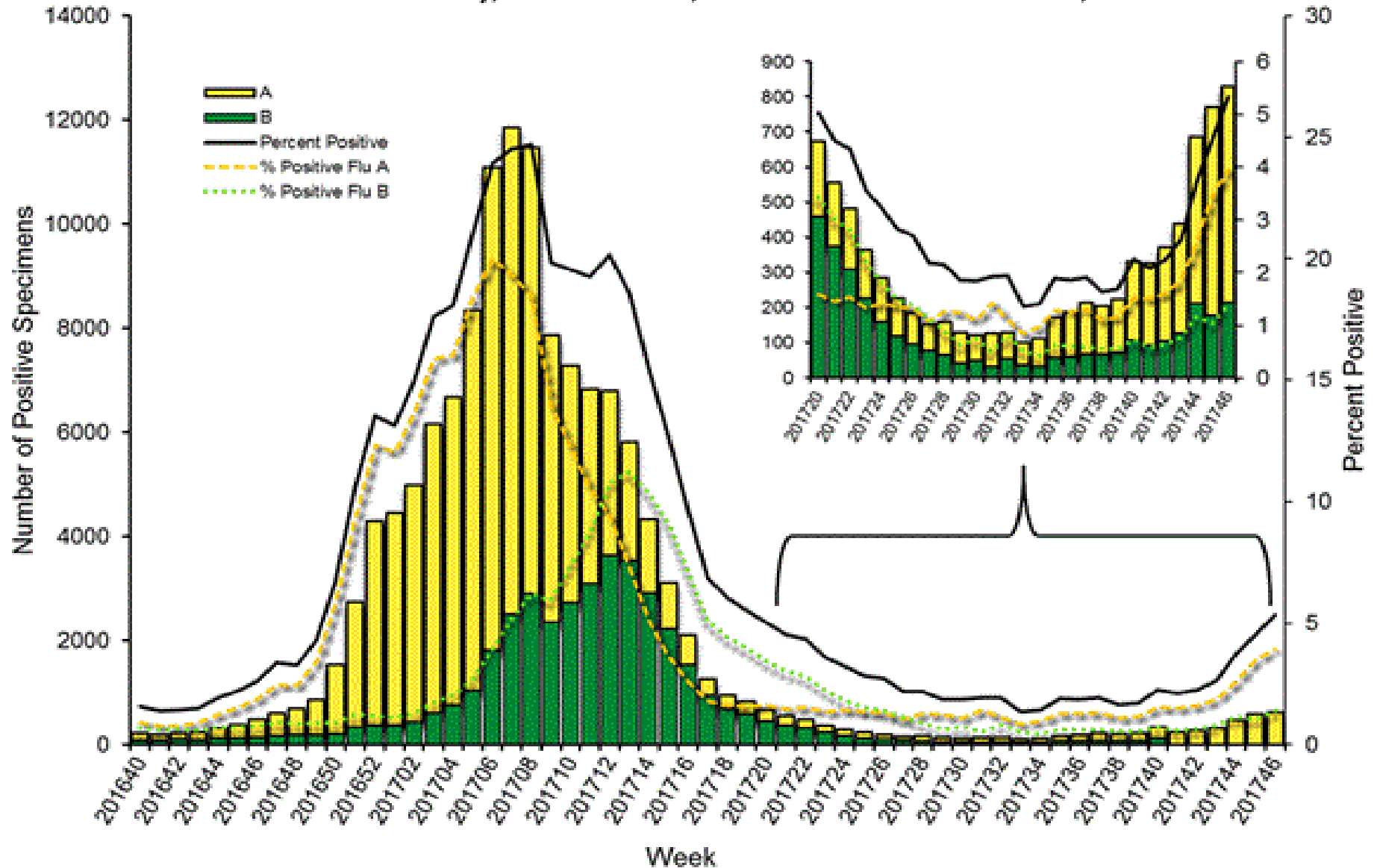


### ACL FLUAG EIA POS 2.6%



CDC Nov 18, 2017 Positivity rate 5.3% - Flu A – 74% (2009 H1N1 -13% , seasonal H3 -78%) Flu B – 26%

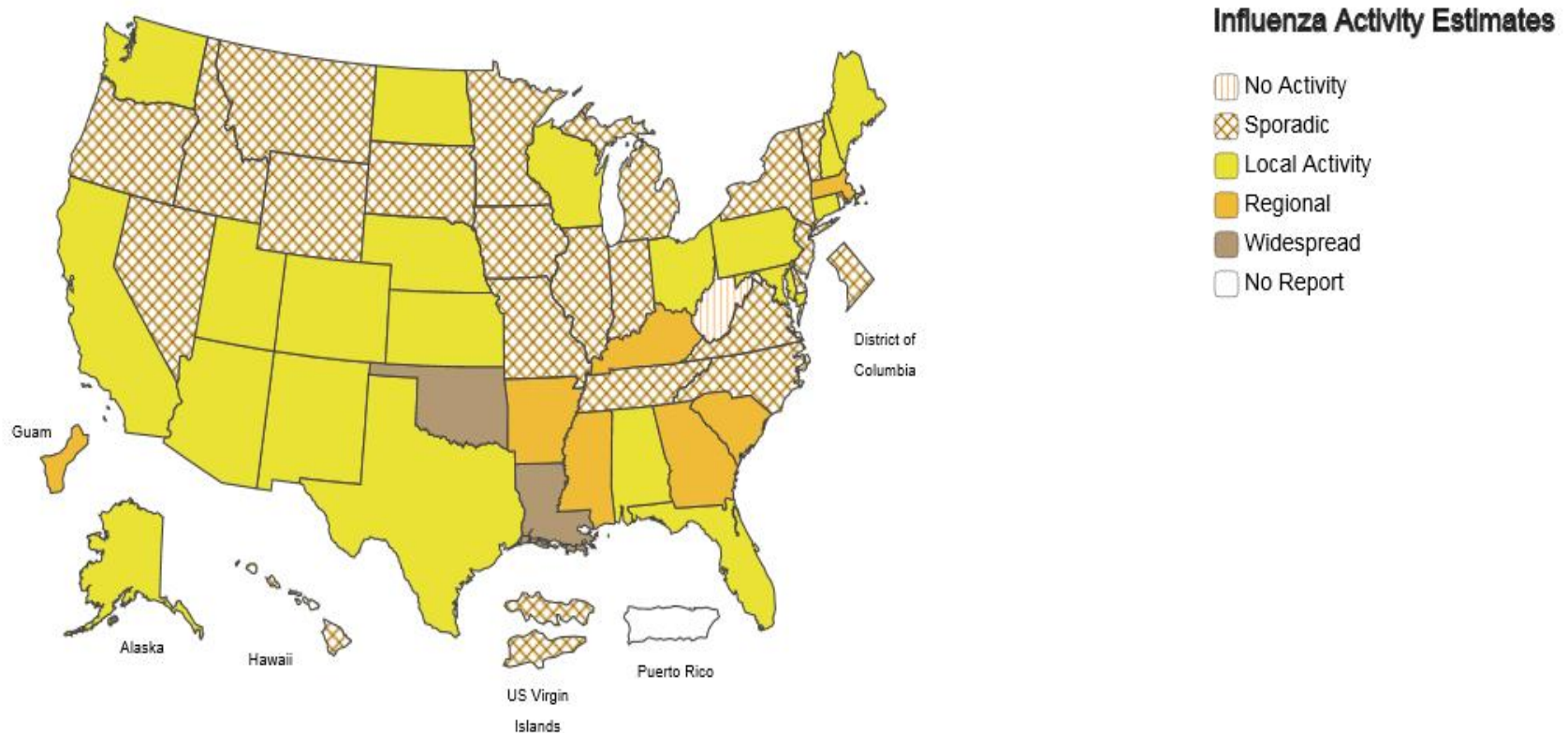
### Influenza Positive Tests Reported to CDC by U.S. Clinical Laboratories, National Summary, October 2, 2016 – November 18, 2017



## A Weekly Influenza Surveillance Report Prepared by the Influenza Division

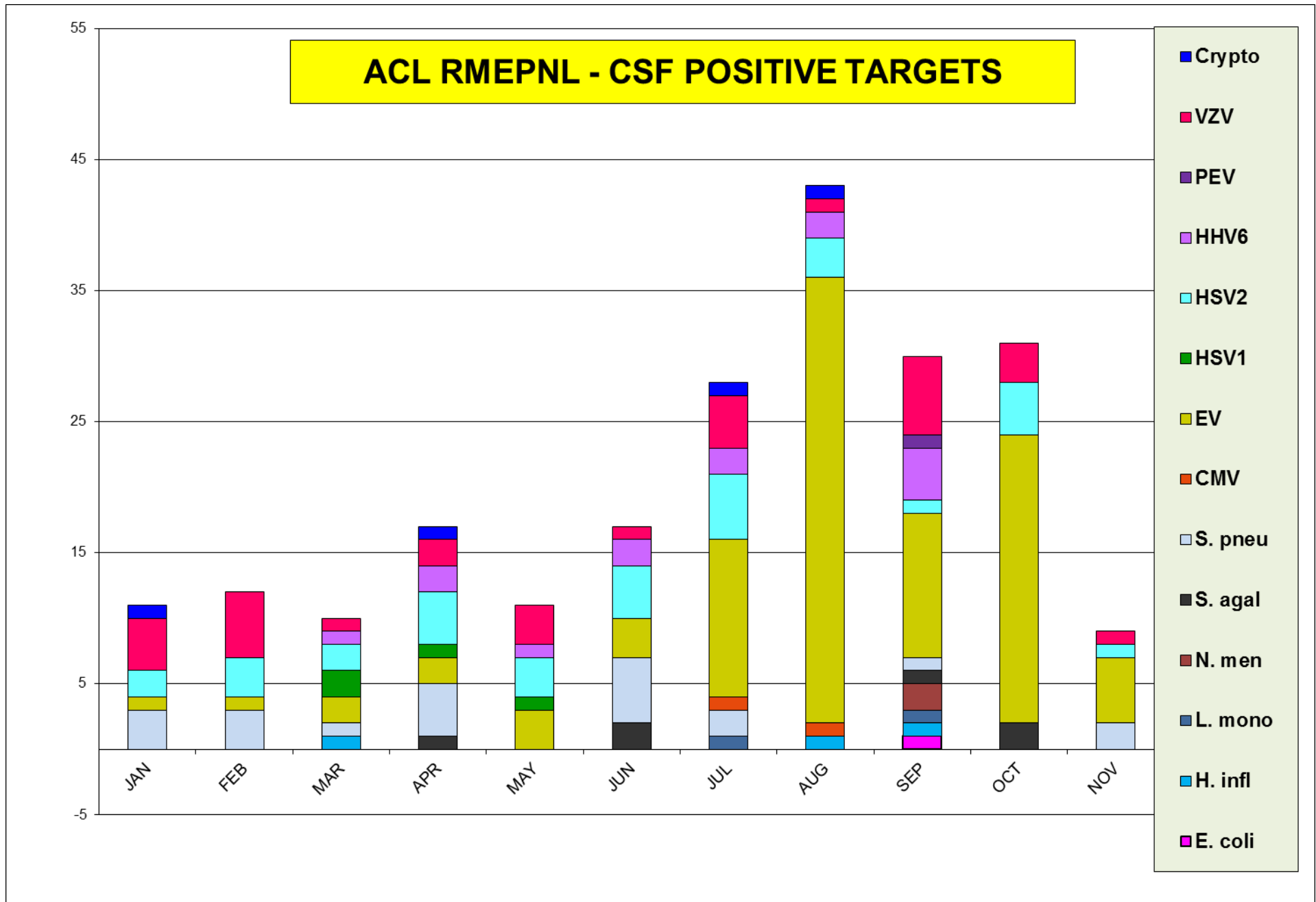
Weekly Influenza Activity Estimates Reported by State and Territorial Epidemiologists\*

Week Ending Nov 18, 2017 - Week 46

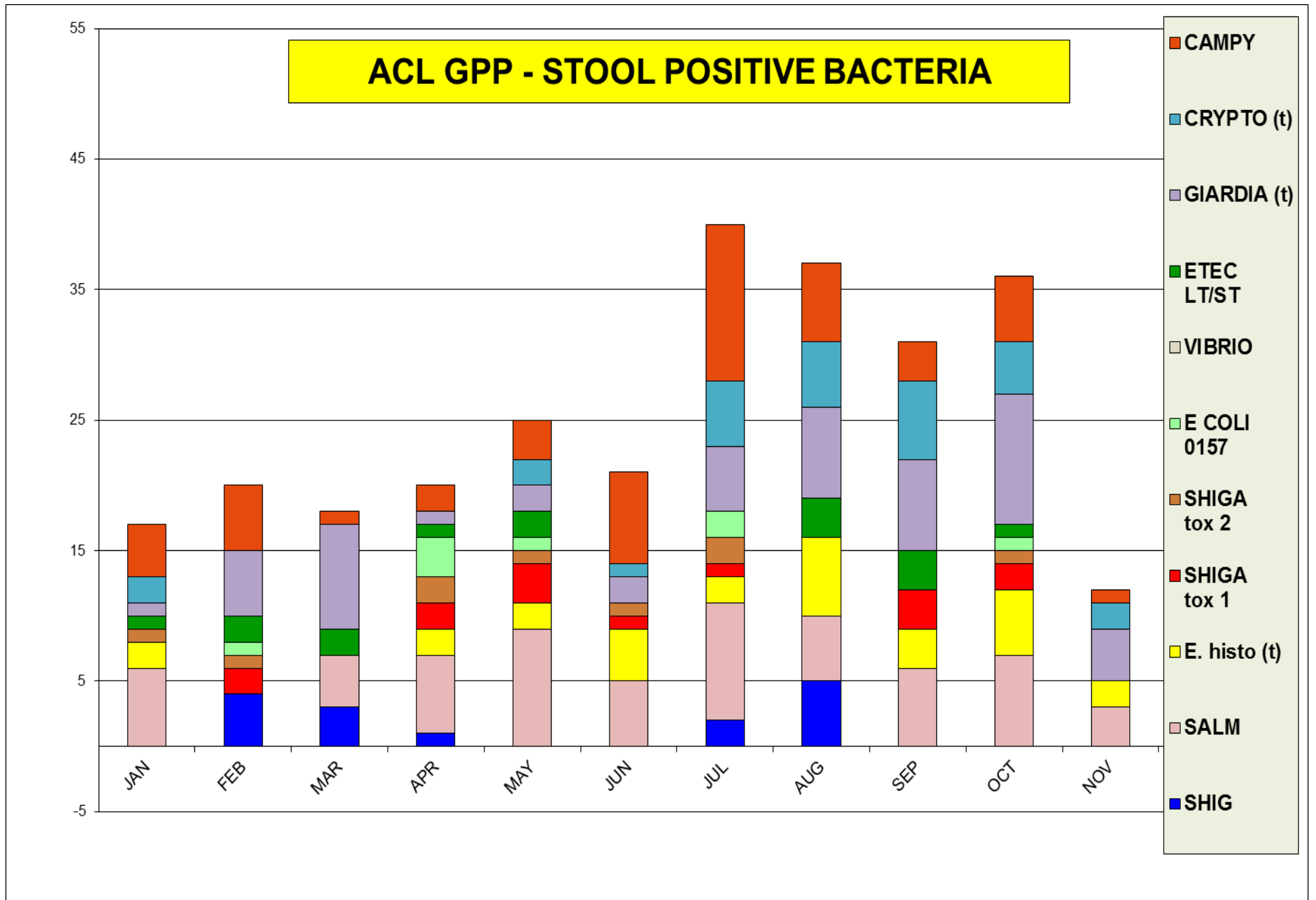


\*This map indicates geographic spread and does not measure the severity of influenza activity.

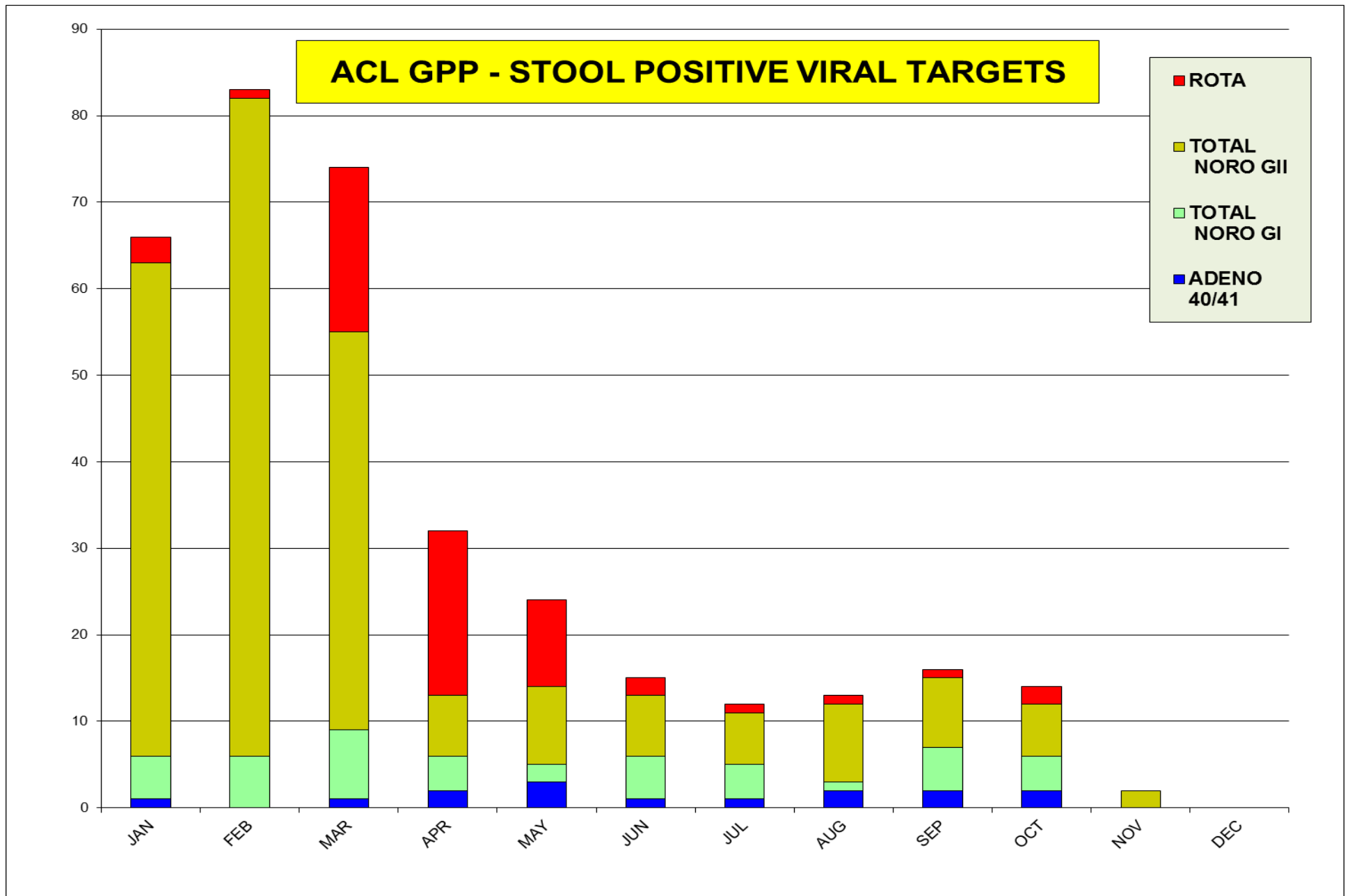
The most prevalent targets as Nov 18<sup>th</sup> are; Enterovirus, S. pneumo (positivity rate 9.2%)



The most prevalent targets as Nov 18<sup>th</sup> are; Salmonella and Giardia



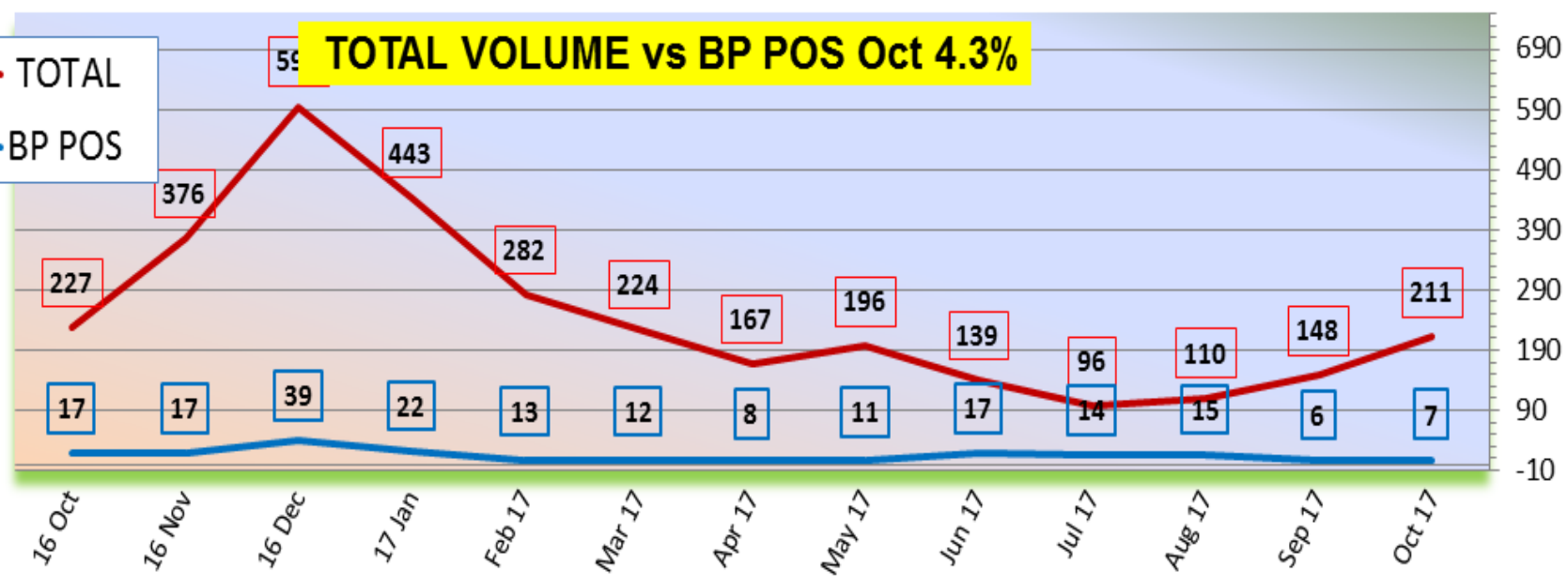
The most prevalent target as Nov 18<sup>th</sup> is; NORO GII virus





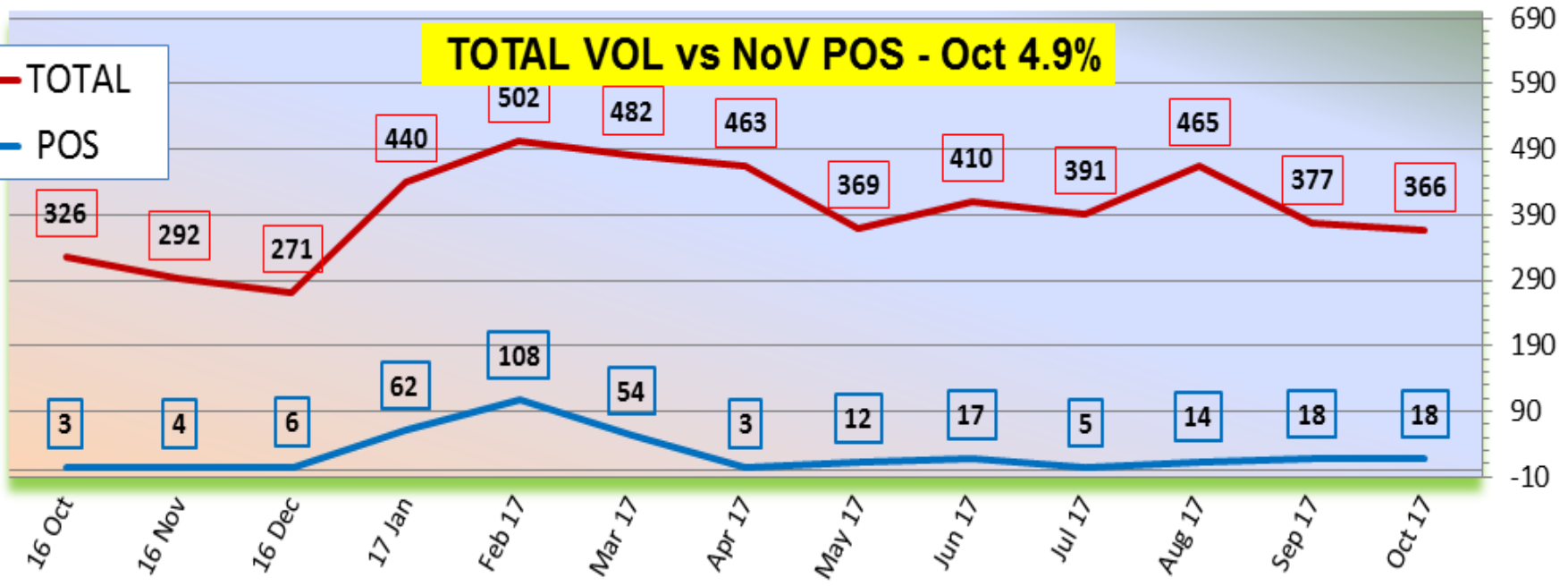
— TOTAL  
— BP POS

**TOTAL VOLUME vs BP POS Oct 4.3%**



— TOTAL  
— POS

**TOTAL VOL vs NoV POS - Oct 4.9%**



**Neuraminidase Inhibitors Resistance - During May 21-November 18, 2017,**

**625** specimens (**92** influenza A(H1N1)pdm09, **383** influenza A(H3N2), and **150** influenza B viruses) collected in the United States were tested for susceptibility to the neuraminidase inhibitors (oseltamivir, zanamivir, and peramivir).

All tested viruses were sensitive to all three recommended antiviral medications.

Update Nov- 2017 PAHO/CDC								
Target	Source	Period	CDC	US % POS	ACL 2017	ACL % POS	WSLH # cases	IDPH # cases
Locally acquired	US (endemic)	Jan-Nov 2017	1	0.00				
<b>Zika virus US import</b>	<u>US (travelers)</u>	Jan-Nov 2017	<b>327</b>	0.10	<b>2</b>	<b>0.4</b>	<b>4</b>	<b>6</b>
<b>Zika virus US territory.</b>	<u>US (local)Puerto Rico</u>	Jan-Nov 2017	<b>583</b>	0.16				
<b>Dengue US import</b>	<u>US (travelers)</u>	Jan-Nov 2017	<b>190</b>	0.06	<b>4</b>	<b>0.9</b>	n/a	n/a
<b>Dengue US territory</b>	<u>US (local)Puerto Rico</u>	Jan-Nov 2017	<b>9</b>	0.00				
<b>Chikungunya US import</b>	<u>US (travelers)</u>	Jan-Nov 2017	<b>85</b>	0.03	<b>4</b>	<b>0.9</b>	n/a	n/a
<b>Chikungunya US territory</b>	<u>US (local)Puerto Rico</u>	Jan-Nov 2017	<b>32</b>	0.01				