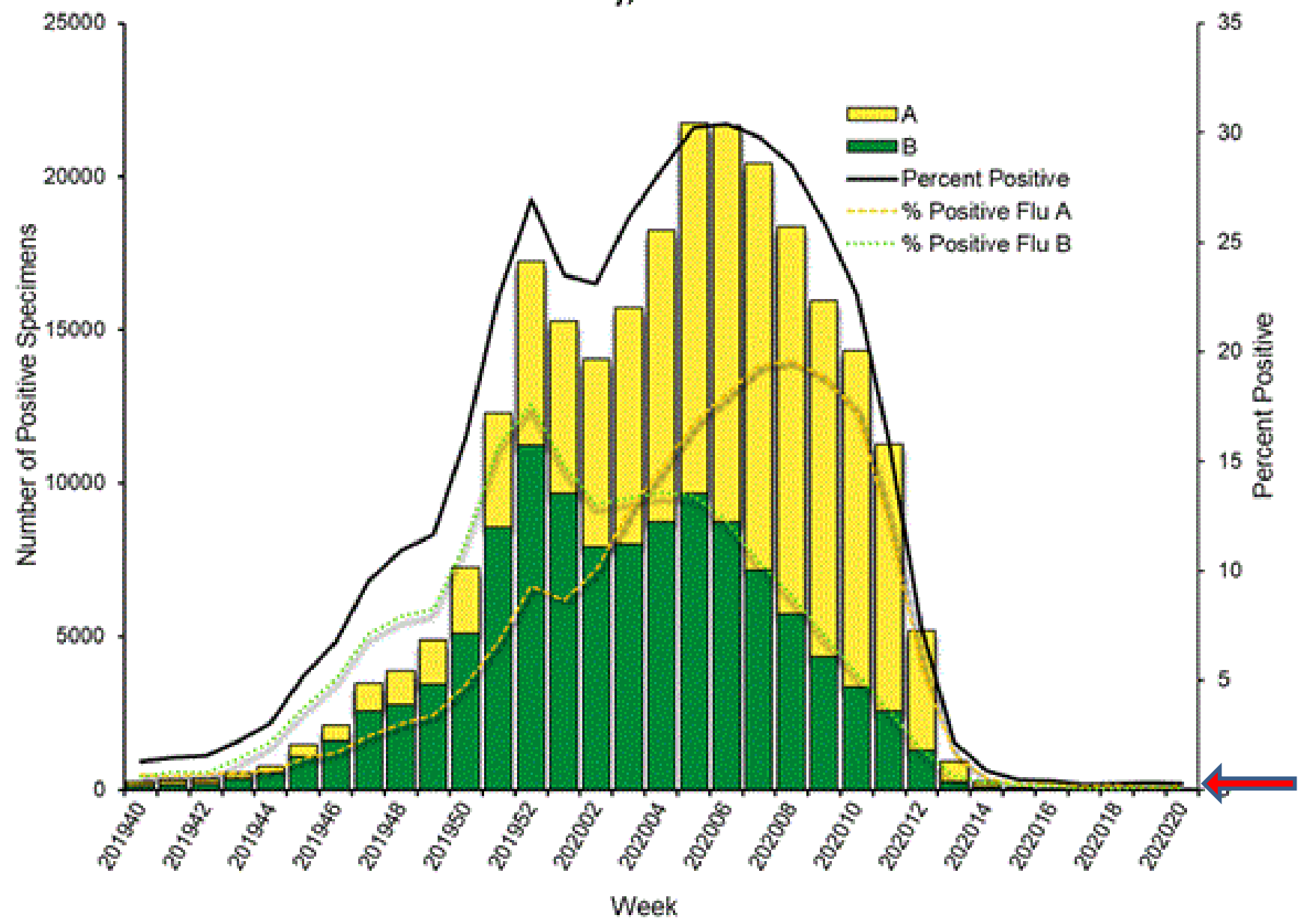


Respiratory Pathogens - 05 22 2020

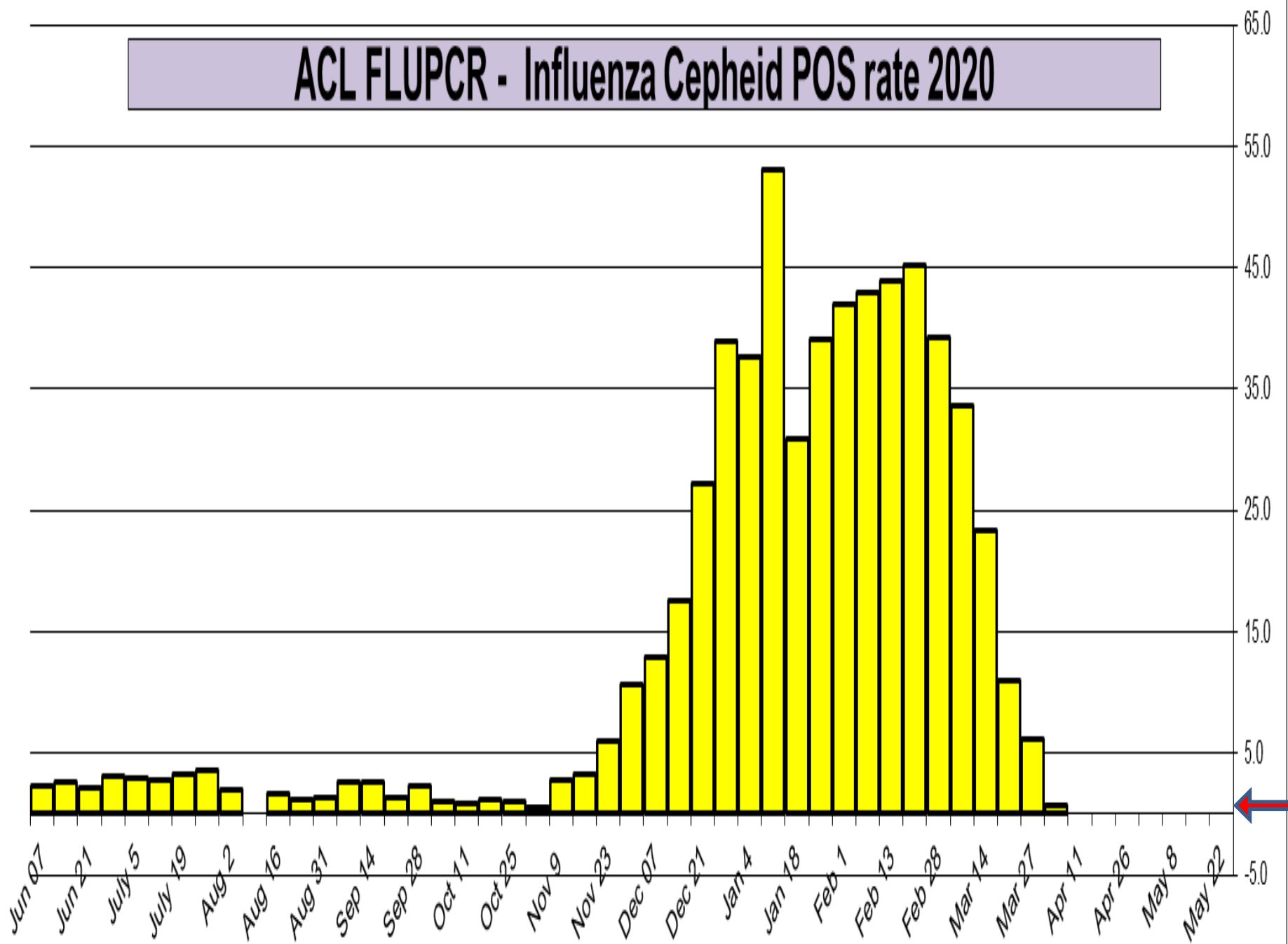


Week	InfA-H1	InfA-H3	2009 H1N1	Inf B	RSV	All Para	EV/ Rhino	Meta pneumo	Adeno	All Corona	Bocca	Myc. pneumo	Chlam. pneumo.	Legionella pneumo.	BP/ BPP	Total Pos	POS FLU	Total	ACL RPPNL	US %FLU	IL/VI PCR	ACL FLUPCR	COVID ACL PCR %	COVID IL %	COVID VI %
May 22	0	0	0	0	0	1	2	1	0	0	0	1	0	0	1	6	0	102	0.0	n/a	n/a	0.0	7.0	9	4
May 15	0	0	0	0	0	0	2	0	0	0	2	1	0	0	1	6	0	168	0.0	0.3	0.2	0.0	8.0	10	5
May 8	0	0	0	0	0	0	1	0	0	0	0	0	0	0	1	1	0	71	1.7	0.3	0.3	0.0	12.2	17	7
May 2	0	0	0	0	0	0	0	1	1	0	1	1	0	0	1	5	0	55	0.0	0.3	0.4	0.0	16.0	20	9
Apr 26	0	0	0	0	0	0	2	0	1	0	0	0	0	0	0	3	0	62	0.0	0.2	0.2	0.0	18.4	25	13
Apr 18	0	0	0	0	1	1	1	0	0	0	0	0	0	0	0	3	0	34	0.0	0.4	0.6	0.0	22.4	29	15
Apr 11	0	0	1	0	1	1	5	3	0	1	0	1	1	0	0	14	1	37	1.7	0.4	0.6	0.0	24.9	30	16
Apr 4	0	0	0	0	3	0	5	6	5	1	0	1	0	0	1	22	0	66	0.0	0.8	1.1	0.7	27.3	32	18
Mar 27	0	0	4	7	17	4	49	38	13	22	3	0	0	0	1	168	11	121	9.1	2.1	2.6	6.2	25.3	28	14
Mar 21	0	0	77	20	53	6	174	99	25	54	8	3	2	0	3	530	103	1691	6.1	7.3	10.4	11.0	15.8	16	10
Mar 14	0	7	112	26	45	5	121	72	16	50	9	3	3	0	3	493	166	1319	12.6	14.8	20.2	23.3	n/a	n/a	n/a
Mar 6	0	3	103	16	43	8	113	81	6	23	7	0	1	0	4	421	135	1063	12.7	22.2	29.7	33.7	n/a	n/a	n/a
Feb 28	0	1	81	19	38	4	56	39	10	21	2	2	0	0	2	275	127	760	16.7	26.1	38.3	39.3	n/a	n/a	n/a
Feb 21	0	4	78	22	59	4	70	59	12	28	10	0	1	0	2	349	114	893	12.8	28.4	37.0	45.2	n/a	n/a	n/a
Feb 13	0	3	90	32	68	5	63	55	5	27	12	1	1	0	0	362	111	795	14.0	29.7	38.0	43.9	n/a	n/a	n/a
Feb 7	0	3	76	32	73	5	51	69	12	14	10	2	1	0	1	349	111	958	11.6	30.1	37.3	42.9	n/a	n/a	n/a

Influenza Positive Tests Reported to CDC by U.S. Clinical Laboratories, National Summary, 2019-2020 Season



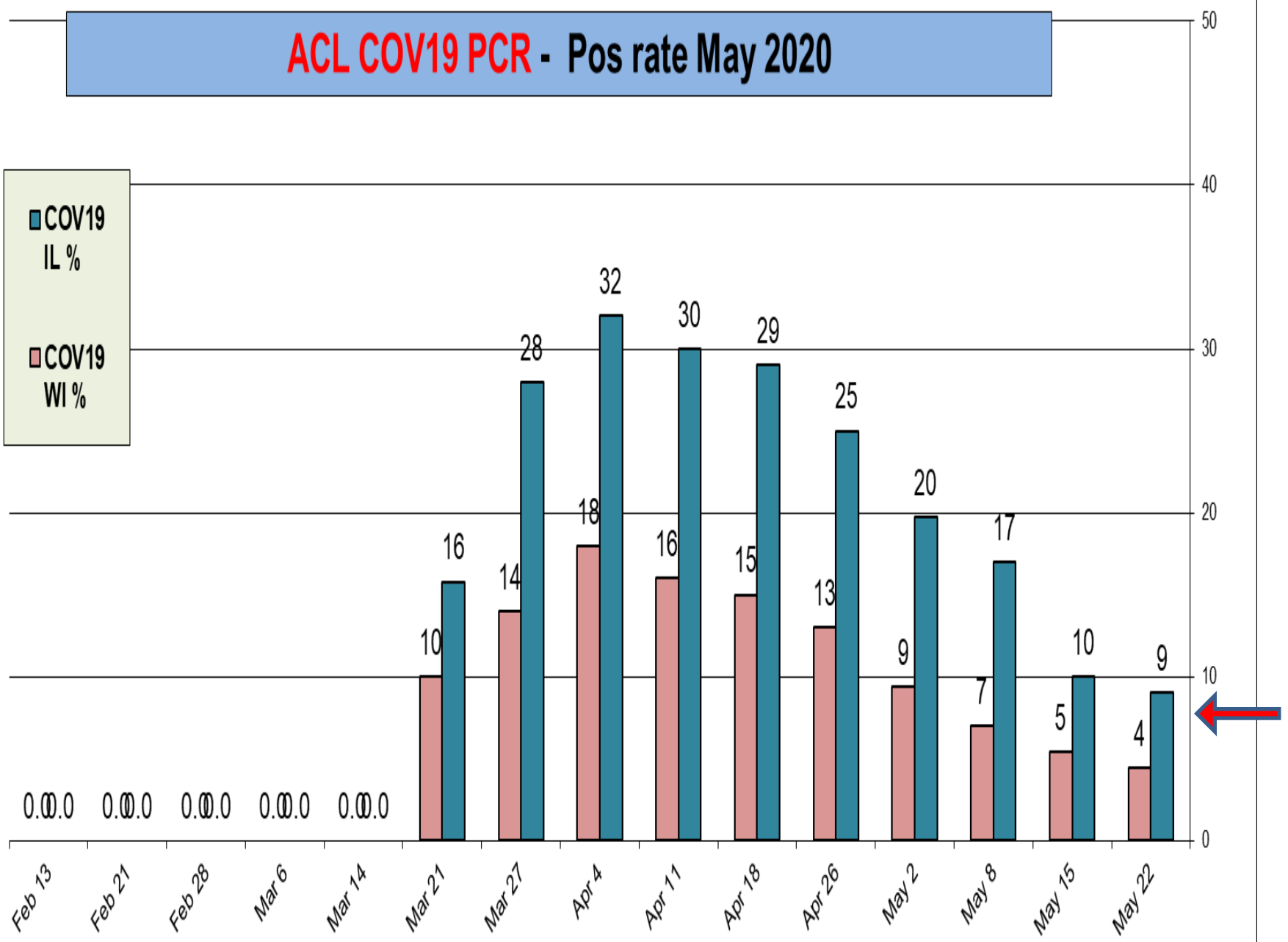
ACL FLUPCR - Influenza Cepheid POS rate 2020



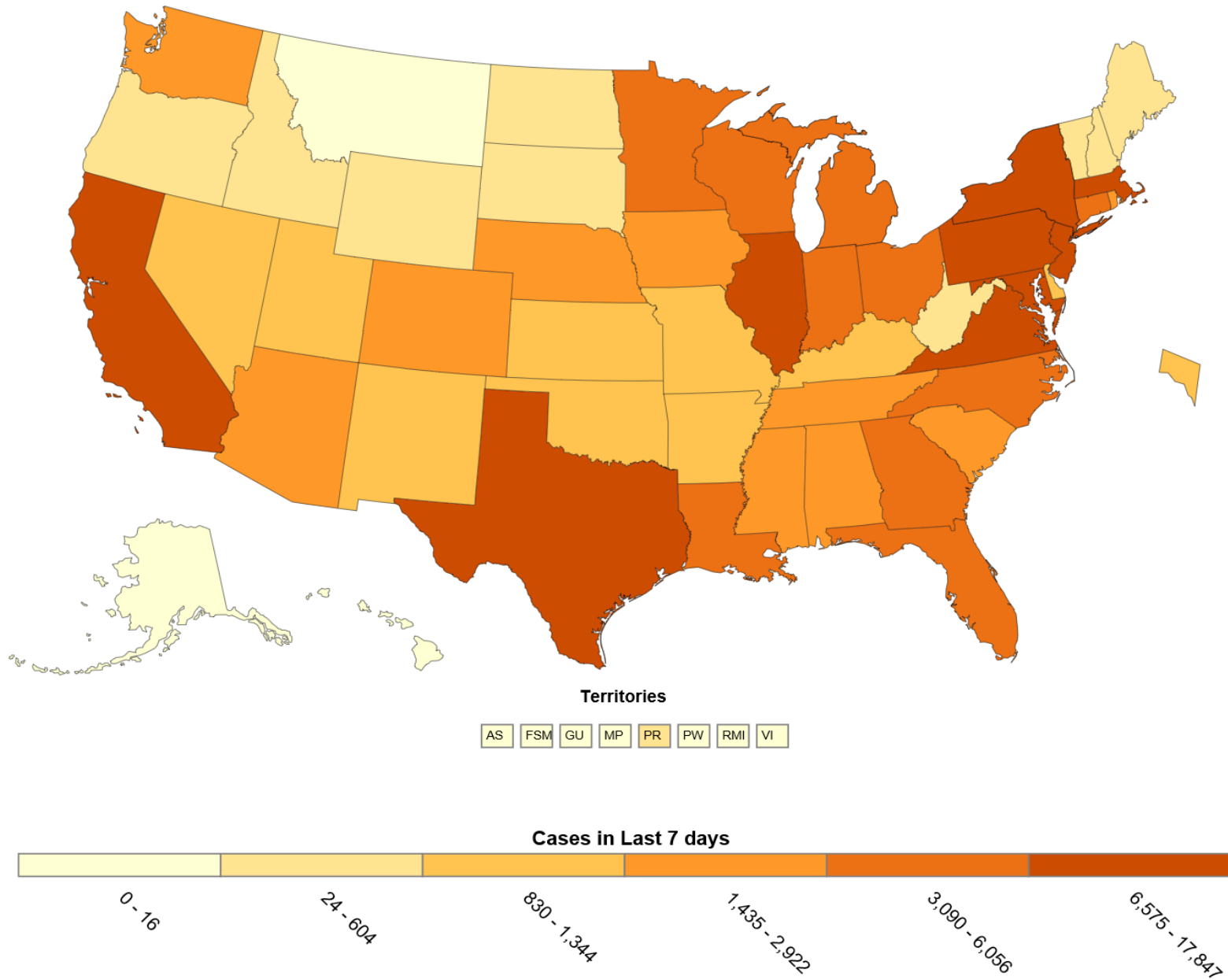
ACL COV19 PCR - Pos rate May 2020

■ COV19
IL %

■ COV19
WI %

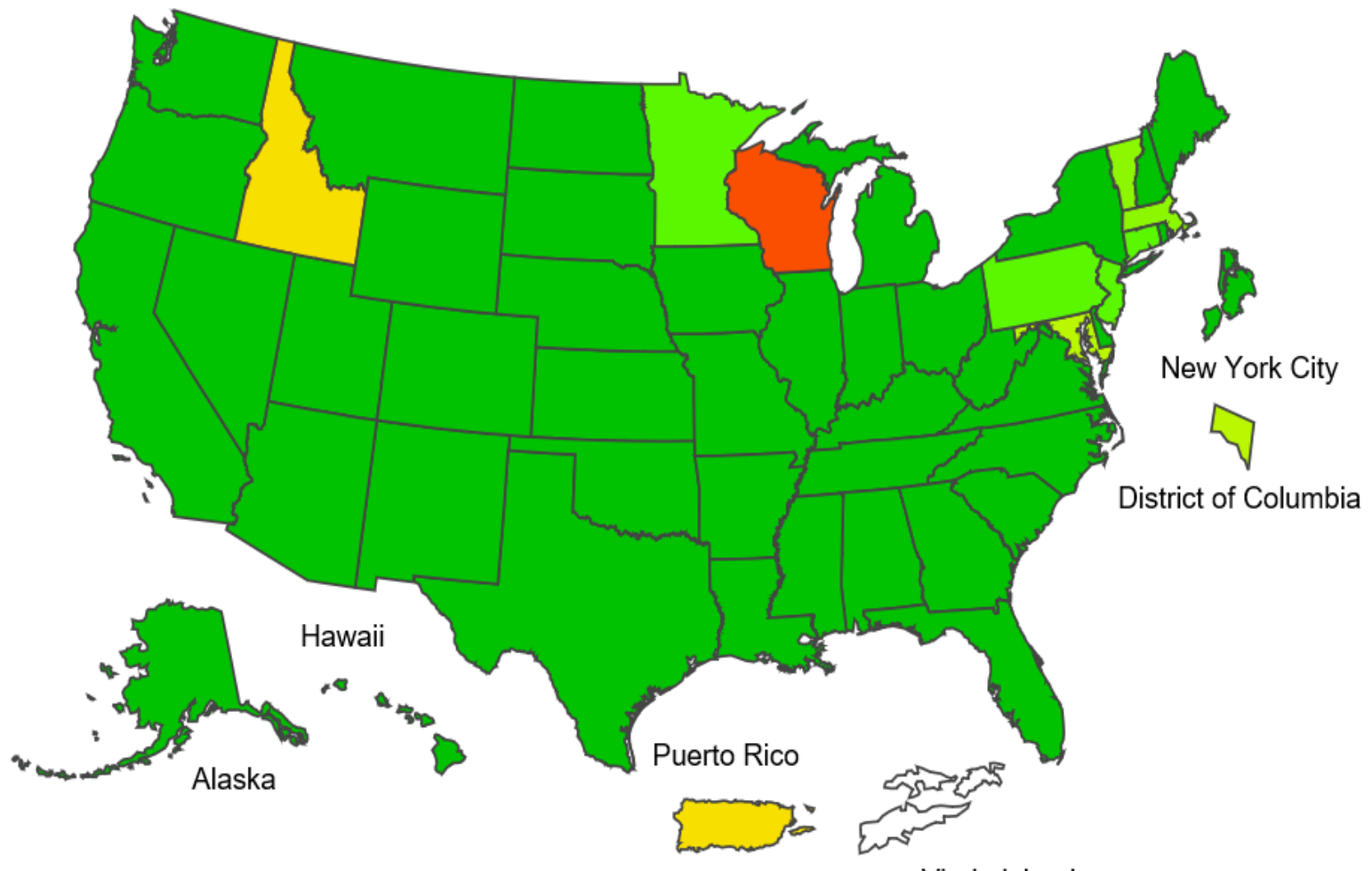
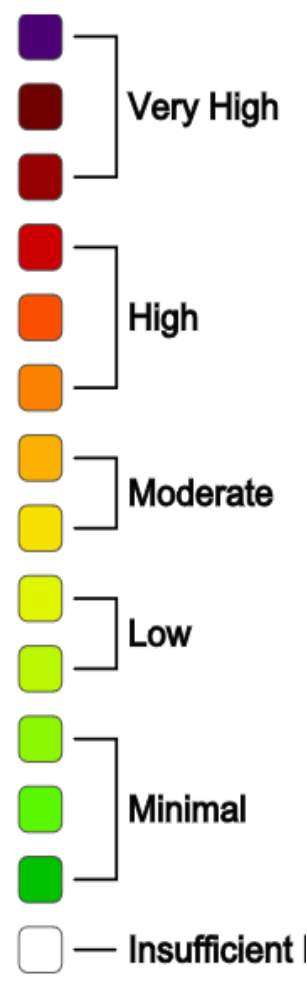


US COVID-19 Cases Reported to the CDC in the Last 7 Days, by Jurisdiction



2019-20 Influenza Season Week 20 ending May 16, 2020

ILI Activity Level



The most prevalent virus targets in May

