

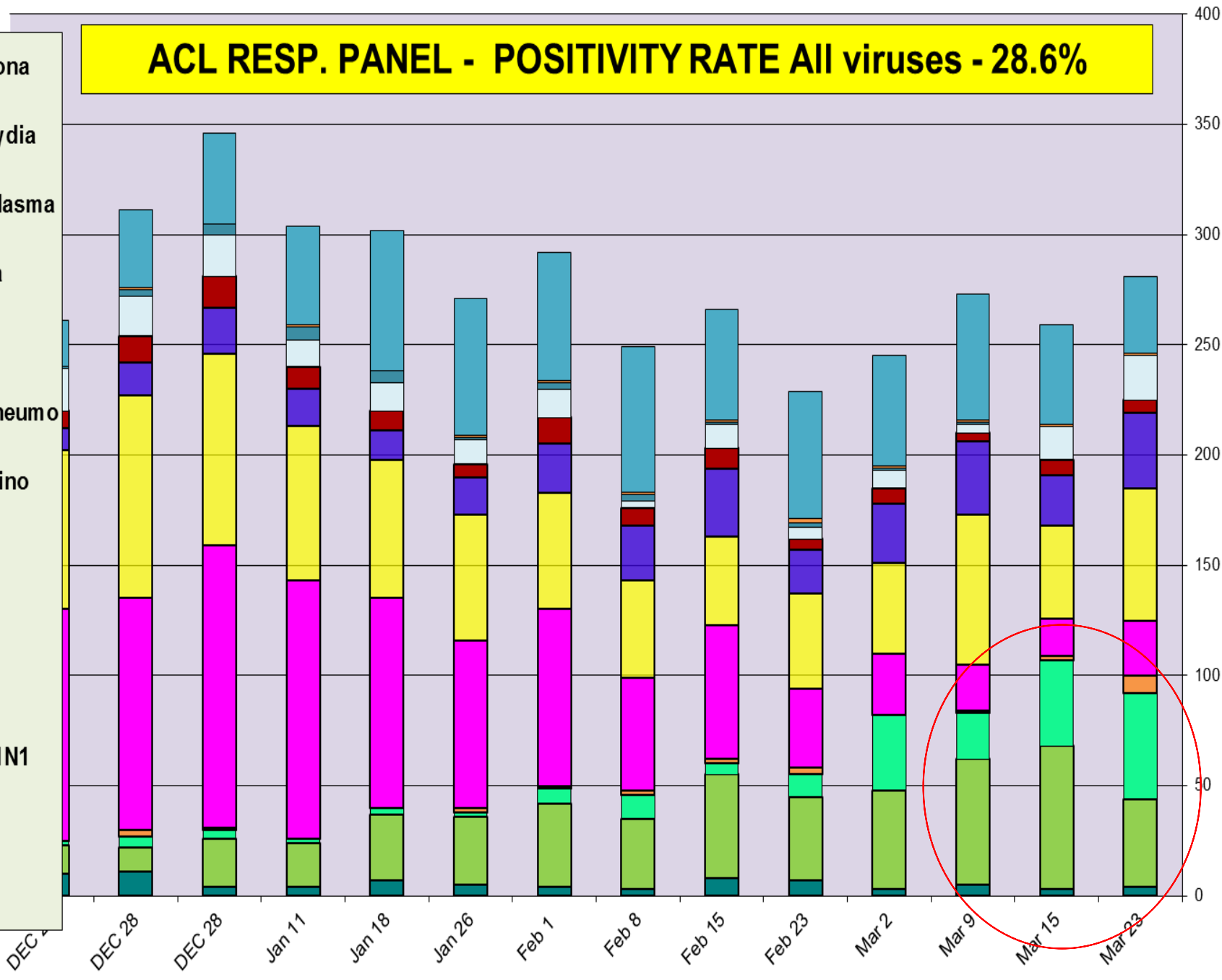
Respiratory Pathogens Dec 21 2018 - Mar 23 2019

Week Beginning	InfA-H1	InfA-H3	2009 H1N1	Inf B	RSV	All Para	EV/ Rhino	Meta pneumo	Adeno	All Corona	Bocca	Mycoplasma	Chlamydia	Total Pos	POS FLU	Total	ACL %FLU	US %FLU	IL/WI PCR	Sofia EIA
Mar 23	0	48	40	8	25	20	60	34	6	35	4	0	1	281	96	984	9.8	n/a	n/a	28.9
Mar 15	0	39	65	2	17	15	42	23	7	45	3	0	1	259	106	1076	9.9	26.0	29.5	29.4
Mar 9	0	21	57	1	21	4	68	33	4	57	5	1	1	273	79	1011	7.8	25.8	29.5	29.4
Mar 2	0	34	45	0	28	8	41	27	7	50	3	1	1	245	79	961	8.2	26.1	28.0	29.4
Feb 23	0	10	38	3	36	5	43	20	5	58	7	2	2	229	51	908	5.6	26.7	22.3	26.5
Feb 15	0	5	47	2	61	11	40	31	9	50	8	1	1	266	54	807	6.7	24.6	19.3	20.7
Feb 8	0	11	32	2	51	3	44	25	8	66	3	3	1	249	45	767	5.9	21.6	16.6	18.4
Feb 1	0	7	38	1	80	13	53	22	12	58	4	3	1	292	46	751	6.1	19.2	14.6	19.6
Jan 26	0	2	31	2	76	11	57	17	6	62	5	1	1	271	35	947	3.7	15.7	13.3	18.3
Jan 18	0	3	30	0	95	13	63	13	9	64	7	5	0	302	33	1064	3.1	12.7	11.6	16.6
Jan 11	0	2	20	0	117	12	70	17	10	45	4	6	1	304	22	1026	2.1	12.7	11.8	10.6
DEC 28	0	4	22	1	128	19	87	21	14	41	4	5	0	346	27	812	3.3	13.7	9.0	9.6
DEC 28	0	5	11	3	105	18	92	15	12	35	11	3	1	311	19	783	2.4	15.6	6.9	8.2
DEC 21	0	2	13	0	105	19	72	10	8	21	10	1	0	261	15	766	2.0	11.0	4.1	7.2

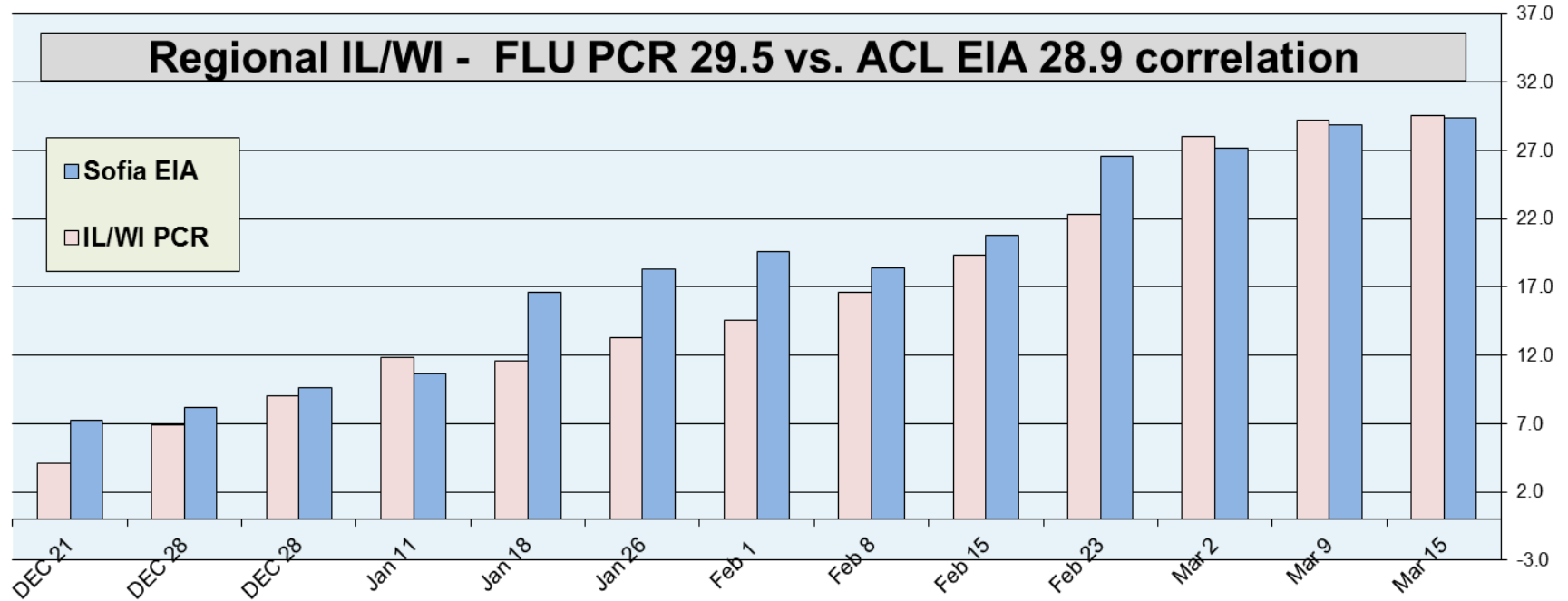
Flu PCR % Rate

ACL RESP. PANEL - POSITIVITY RATE All viruses - 28.6%

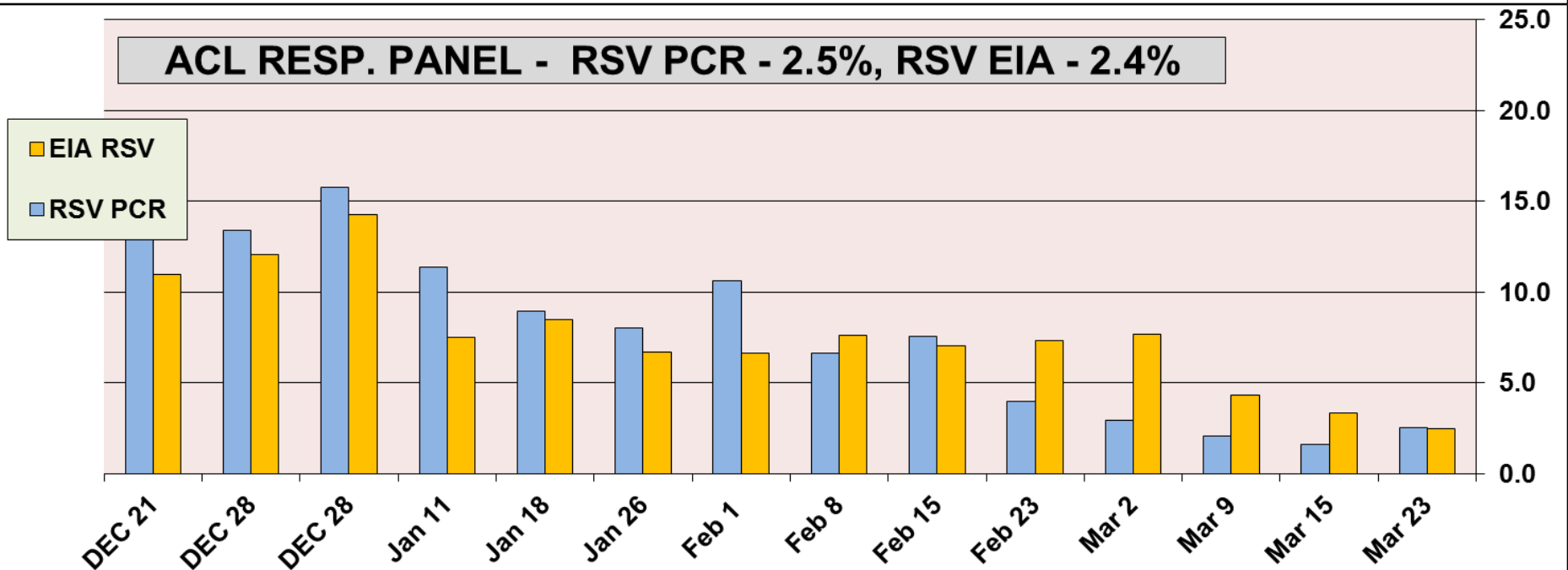
- All Corona
- Chla mydia
- Myco plasma
- All Para
- Adeno
- Meta pneumo
- EV / Rhino
- RSV
- Inf B
- InfA-H3
- 2009 H1N1
- InfA-H1
- Bocca



Regional IL/WI - FLU PCR 29.5 vs. ACL EIA 28.9 correlation



ACL RESP. PANEL - RSV PCR - 2.5%, RSV EIA - 2.4%



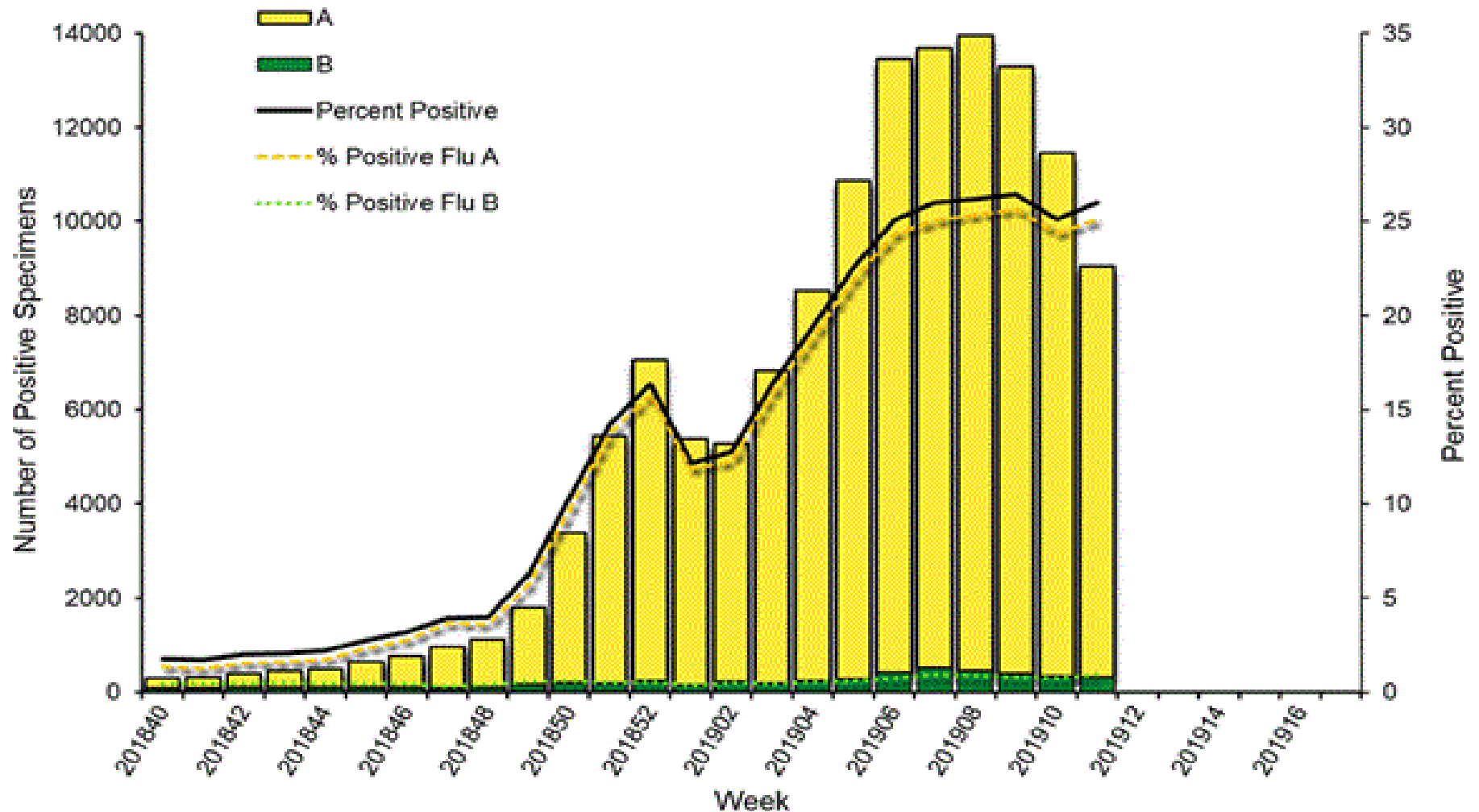
Correlation between RPPNL (FLU PCR) and Sofia (FLUAG) - Accuracy 94.4%

In Feb/Mar (7 weeks) 1653 samples were tested by both methods most of them negative, 115/205 samples were positive by EIA when confirmed by PCR. 90 negative EIA samples were tested positive by PCR method. *(ACL correlation data is compiled on samples collected within <48 h). Since positive rate is under-represented and provides correlation on very small fraction of positive samples – interpret clinical sensitivity with caution.*

02/02/19 to 03/23/2019				
FLUAG (Sofia) vs RPPNL (PCR) correlation				
		RPPNL		
		+	-	Total
FluAG	+	115	3	118
	-	90	1445	1535
		Total		1653
%				
56.1	Clinical Sensitivity			
99.8	Clinical Specificity			
97.5	Positive Predictive Value (PPV)			
94.1	Negative Predictive Value (NPV)			
94.4	Accuracy			

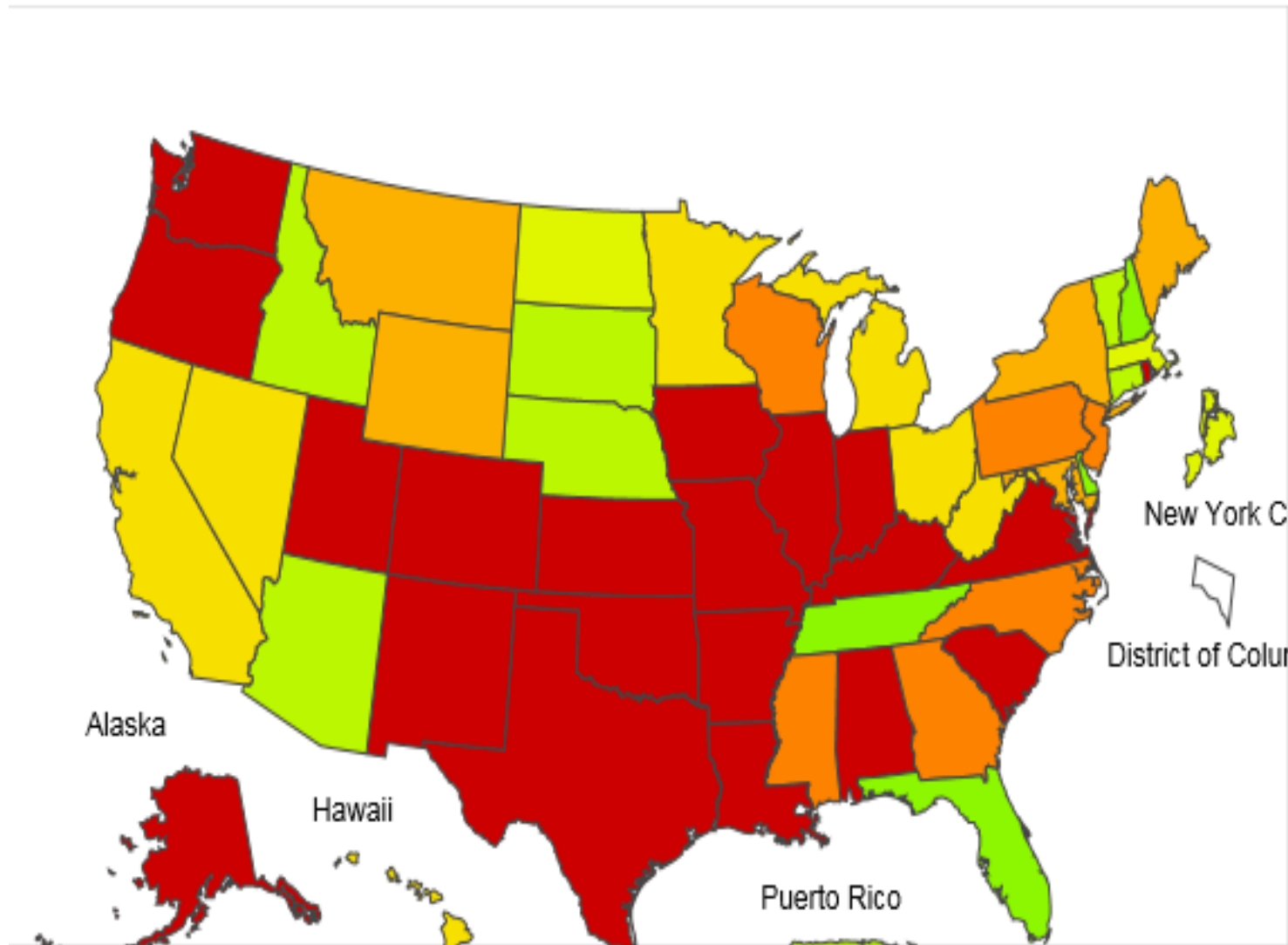
Mar 16, 2019 **Positivity rate 26%** - Flu A – 96% , Flu B – 4%

Influenza Positive Tests Reported to CDC by U.S. Clinical Laboratories, National Summary, 2018-2019 Season



2018-19 Influenza Season Week 11 ending Mar 16, 2019

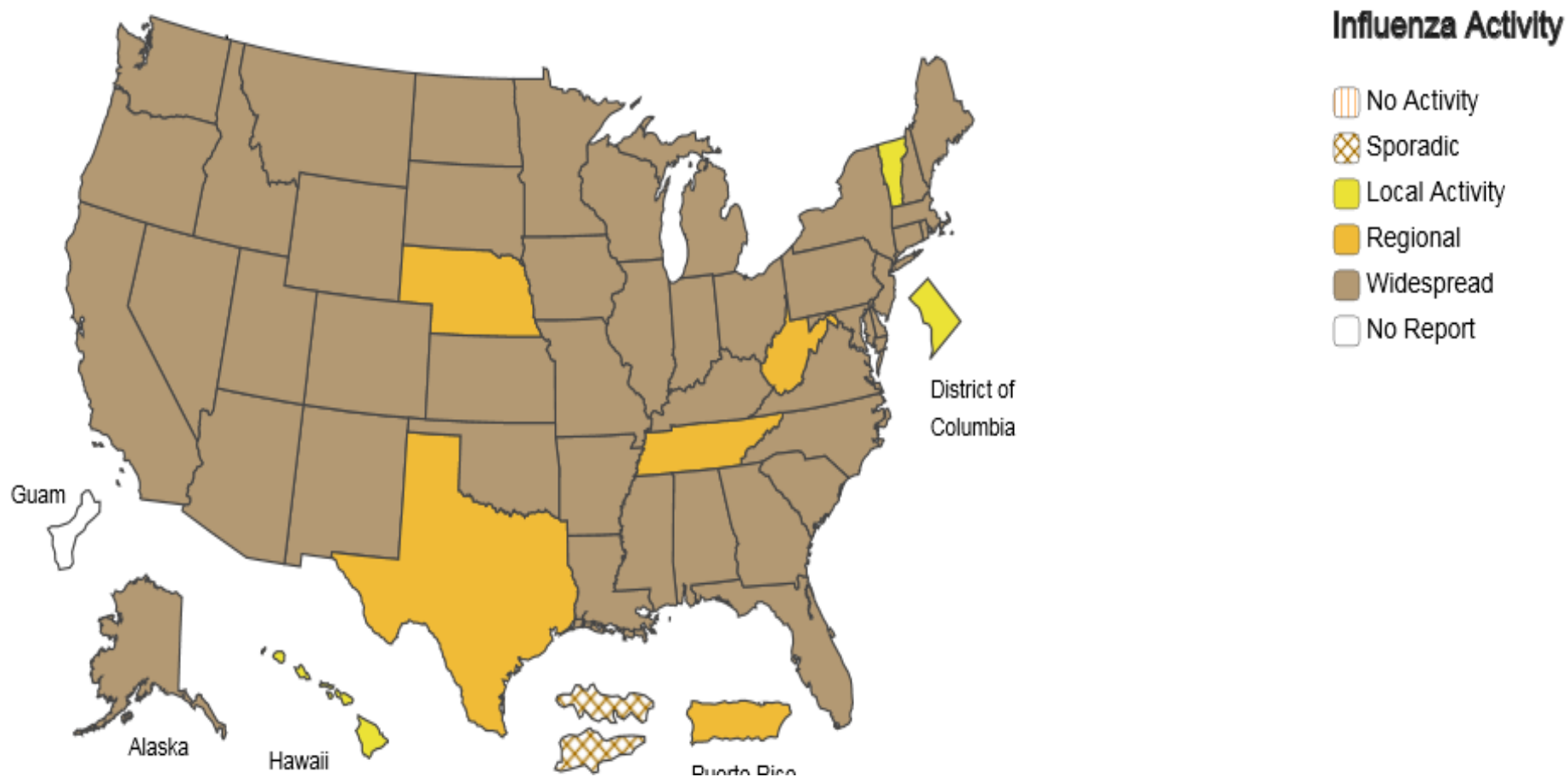
ILI Activity



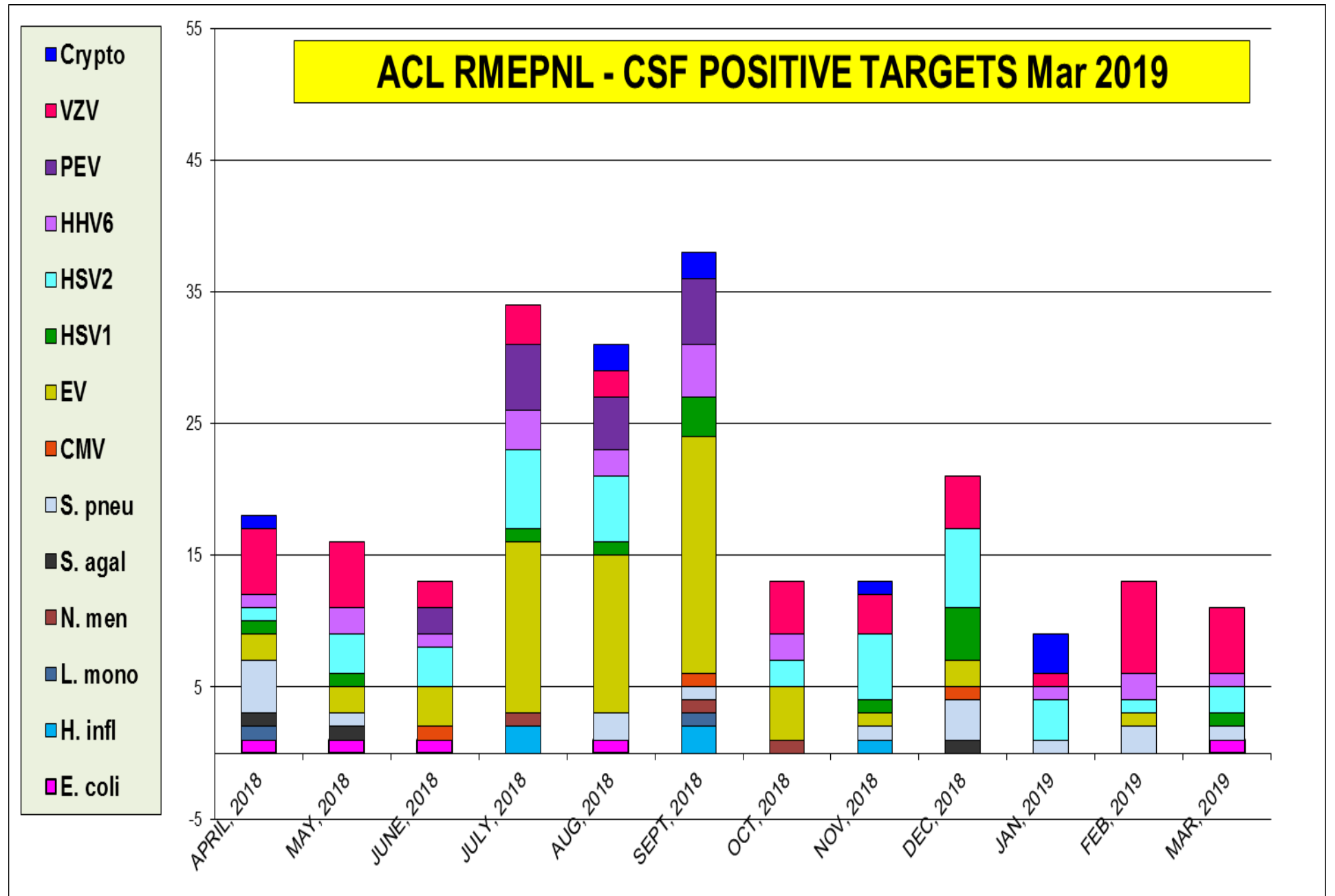
A Weekly Influenza Surveillance Report Prepared by the Influenza Division

Weekly Influenza Activity Estimates Reported by State and Territorial Epidemiologists*

Week Ending Mar 16, 2019 - Week 11

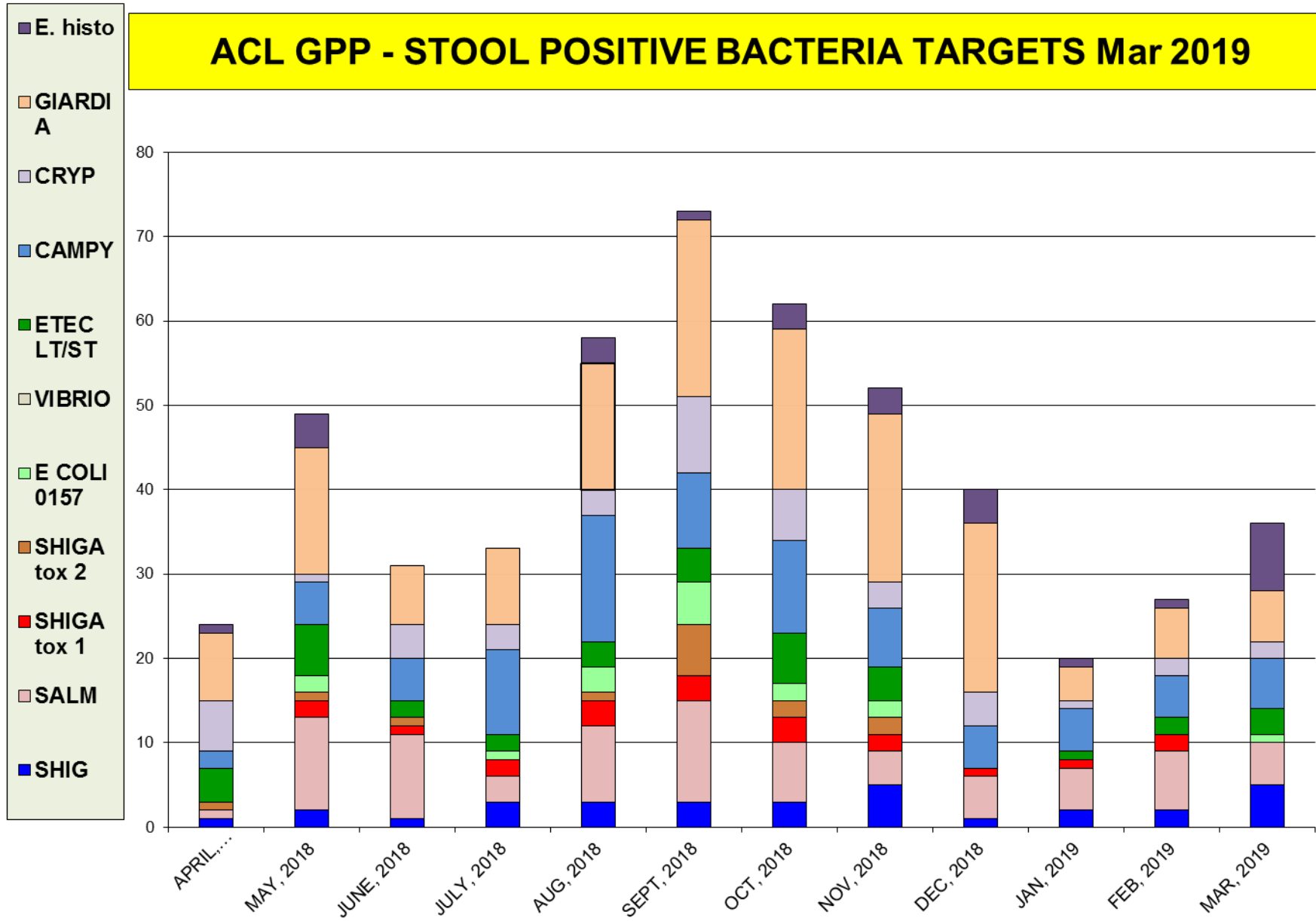


The most prevalent target was VZV– total pos. rate 7.7%

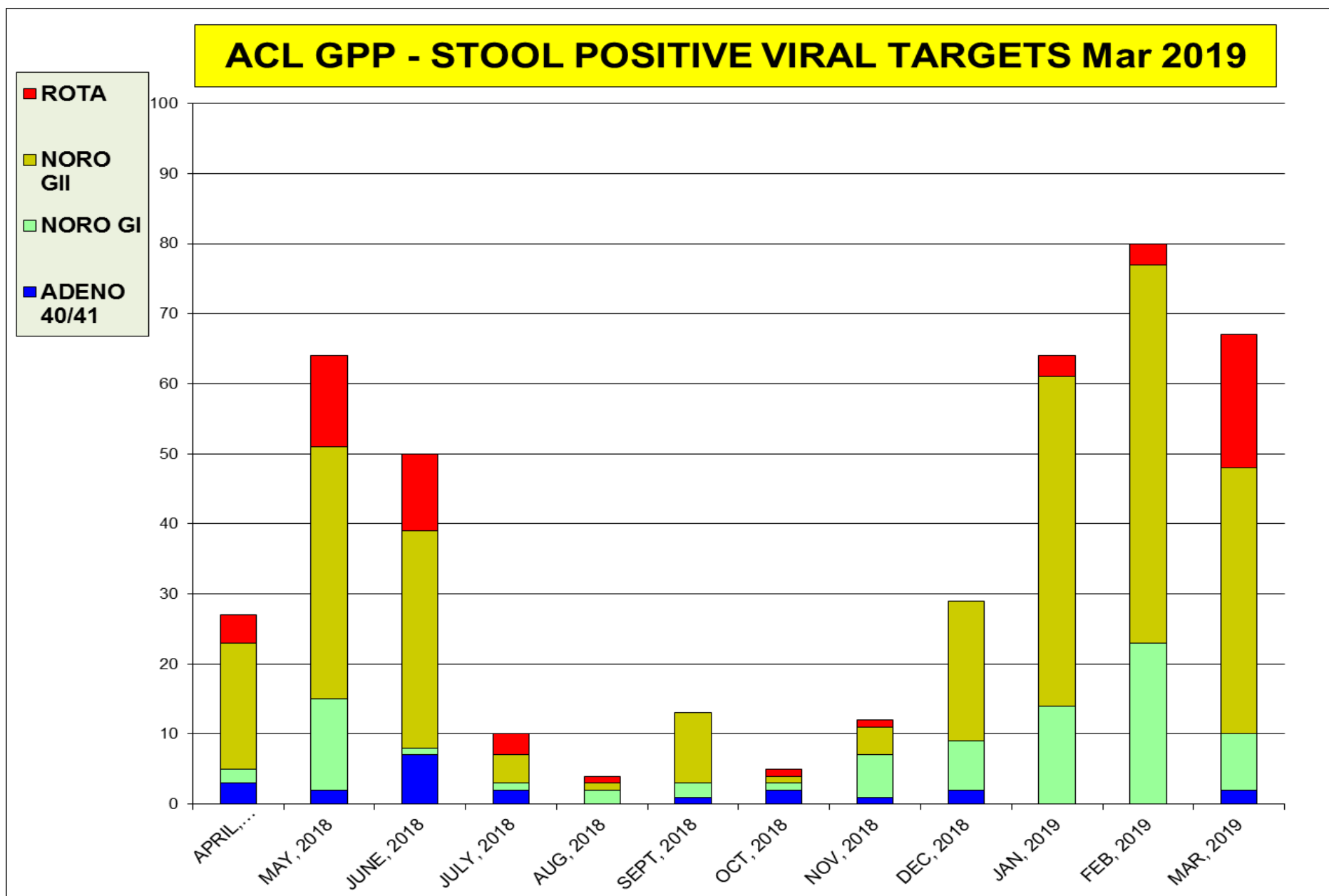


The most prevalent bacterial targets was *E. histolytica* and Campy

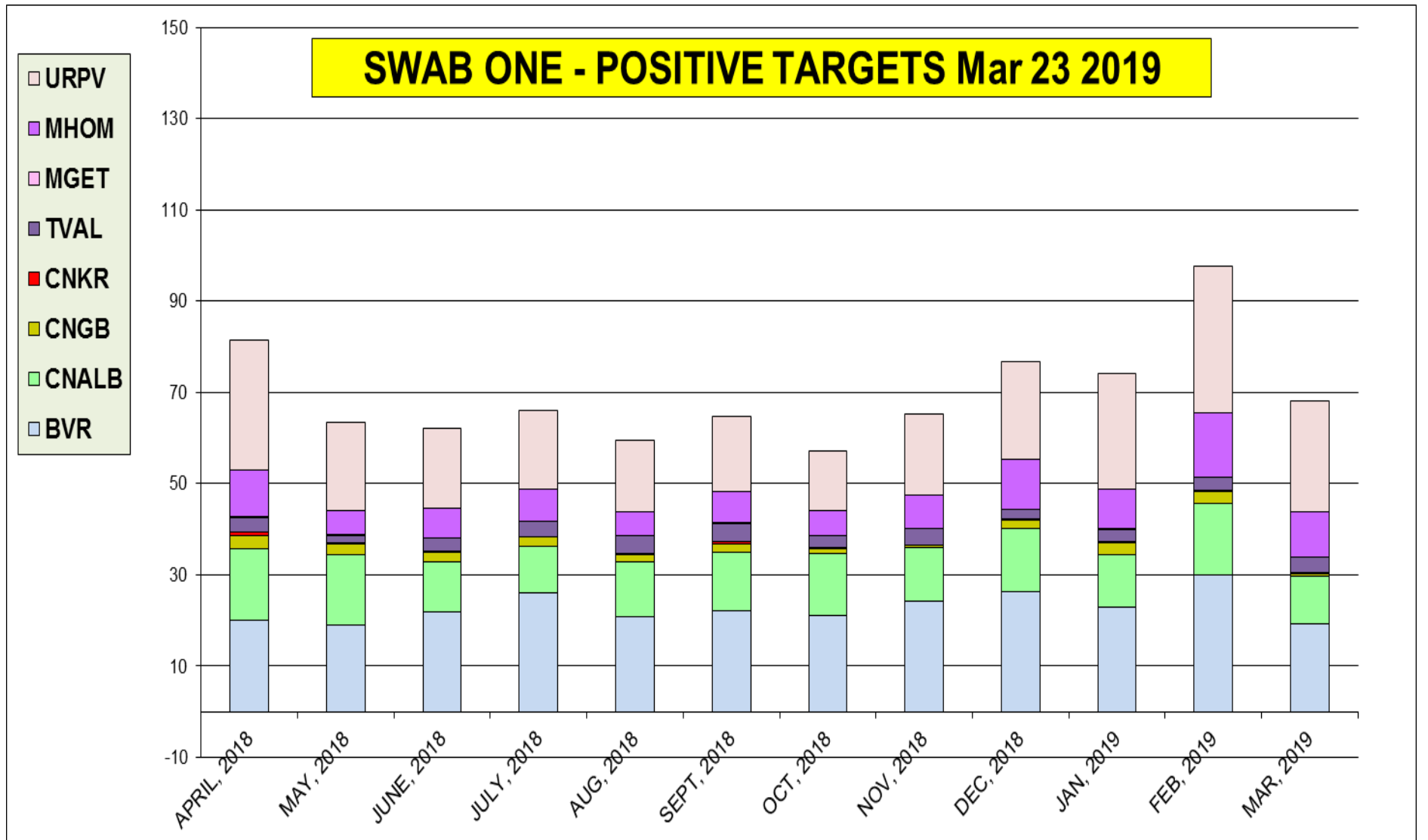
ACL GPP - STOOL POSITIVE BACTERIA TARGETS Mar 2019



The most prevalent virus target was **Norovirus type I / II** - 5.2 % pos. rate



BV	C.ALB	C.GLB	C.KUR	T.VAG	M.GEN	M.HOM	U.PAV	Tot. pos.
5,178	5,178	5,178	5,178	5,178	5,178	5,178	5,178	5,178
23.1	12.7	1.8	0.3	3.0	0.1	8.3	21.1	69.4



Neuraminidase Inhibitors Resistance in samples collected – as of Mar 16, 2019

Per CDC website	Oseltamivir		Peramivir		Zanamivir	
	Virus Samples tested (n)	Resistant Viruses, (%)	Virus Samples tested (n)	Resistant Viruses, (%)	Virus Samples tested (n)	Resistant Viruses, (%)
Influenza A (H1N1)pdm09	857	0.2	857	0.3	857	0
Influenza A (H3N2)	585	0	585	0	585	0
Influenza B	192	0	192	0	192	0

There is 0.2% resistance detected.