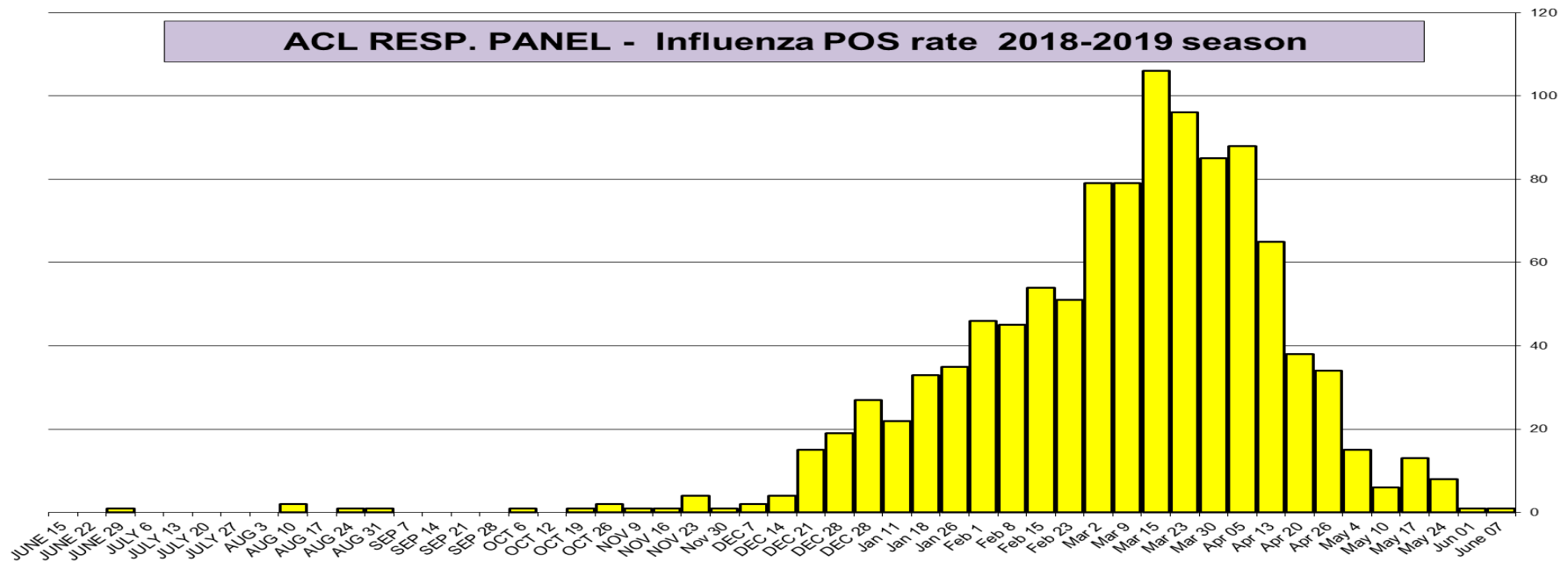


Respiratory Pathogens Jun 15 2018 - June 7 2019

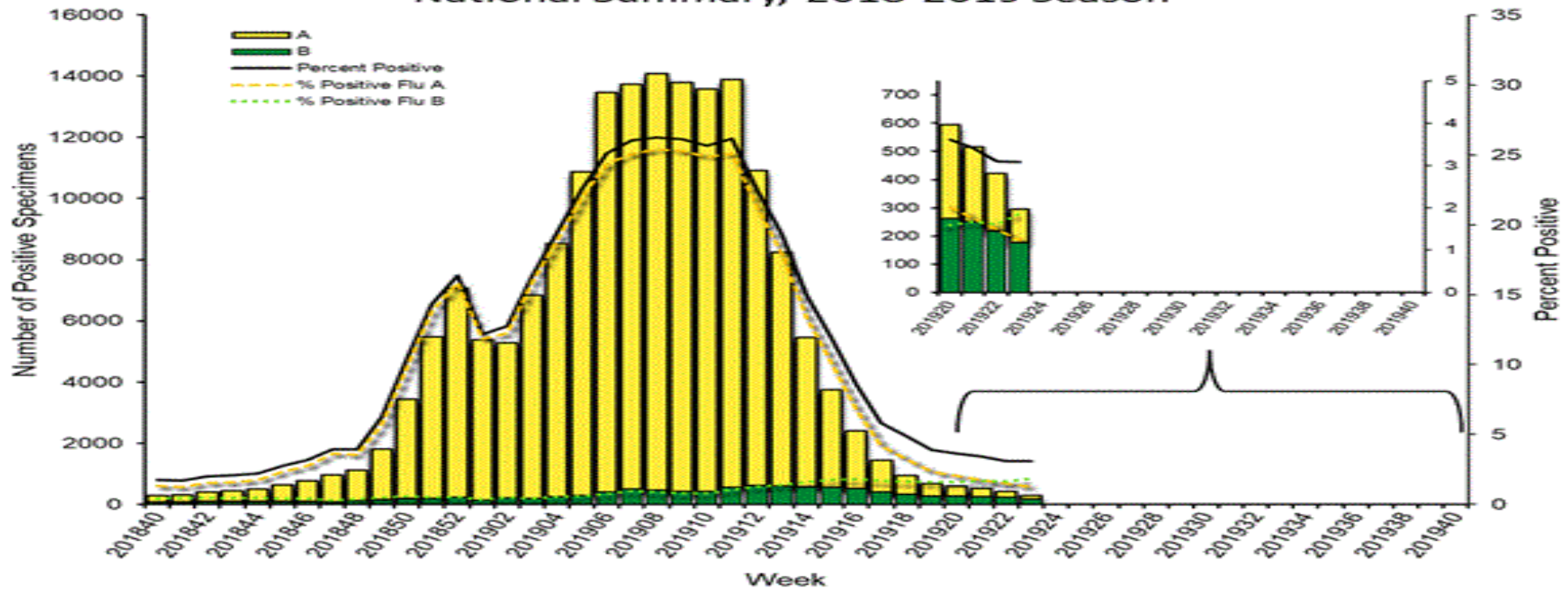
Week	InfA-H1	InfA-H3	2009 H1N1	Inf B	RSV	All Para	EV / Rhino	Meta pneumo	Adeno	All Corona	Bocca	Myco plasma	Chla mydia	Total Pos	POS FLU	Total	ACL %FLU	US %FLU	IL/WI PCR	Sofia EIA
June 07	0	2	1	0	3	33	62	24	5	2	3	1	0	136	1	630	0.2	3.1	2.2	2.4
Jun 01	0	0	1	0	4	37	60	31	7	4	5	0	0	149	1	743	0.1	3.1	2.1	2.6
May 24	0	2	3	3	2	50	100	35	9	7	5	0	3	219	8	1045	0.8	3.4	3.2	3.2
May 17	0	8	4	1	5	35	62	36	8	7	6	0	0	172	13	1268	1.0	3.8	4.7	5.6
May 10	1	2	2	1	7	49	53	32	5	8	6	0	1	167	6	1028	0.6	3.7	6.5	7.2
May 4	0	6	7	2	3	51	60	34	6	10	3	1	1	184	15	761	2.0	4.7	8.2	8.5
Apr 26	0	13	15	6	14	29	49	37	5	19	4	1	2	194	34	800	4.3	5.4	12.5	12.0
Apr 20	0	16	17	5	8	34	58	47	2	19	8	2	1	217	38	827	4.6	8.1	17.5	16.6
Apr 13	0	24	33	8	12	28	68	59	8	28	12	1	1	282	65	893	7.3	11.8	22.7	20.3
Apr 05	0	55	26	7	17	33	62	35	5	40	1	1	3	285	88	893	9.9	15.1	26.7	23.7
Mar 30	0	37	45	3	15	25	56	31	6	34	11	1	2	266	85	936	9.1	18.1	29.8	26.6
Mar 23	0	48	40	8	25	20	60	34	6	35	4	0	1	281	96	984	9.8	22.1	30.4	28.9

Flu PCR % Rate

ACL RESP. PANEL - Influenza POS rate 2018-2019 season

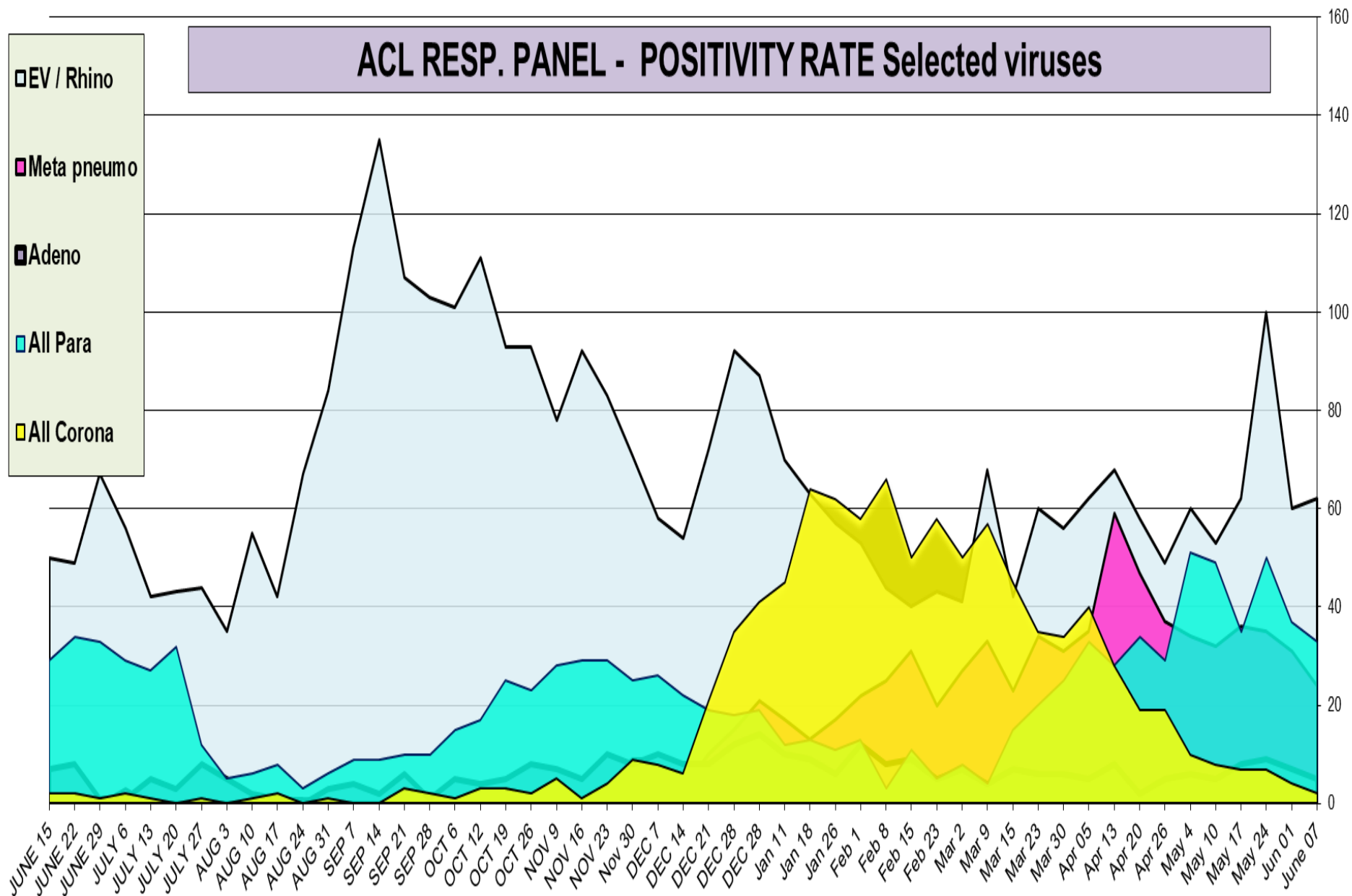


Influenza Positive Tests Reported to CDC by U.S. Clinical Laboratories, National Summary, 2018-2019 Season



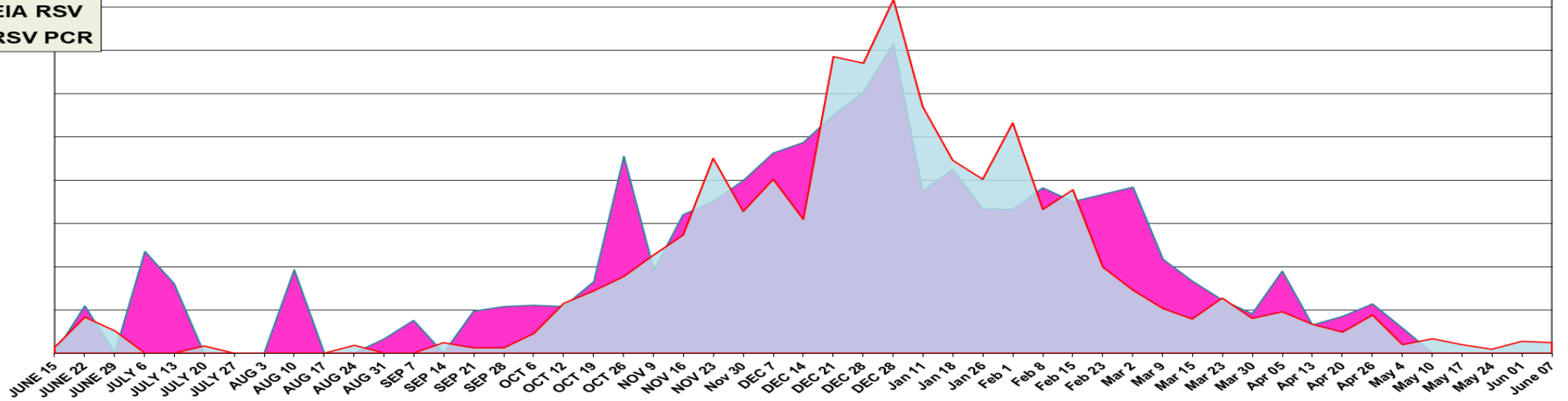
ACL RESP. PANEL - POSITIVITY RATE Selected viruses

- EV / Rhino
- Meta pneumo
- Adeno
- All Para
- All Corona



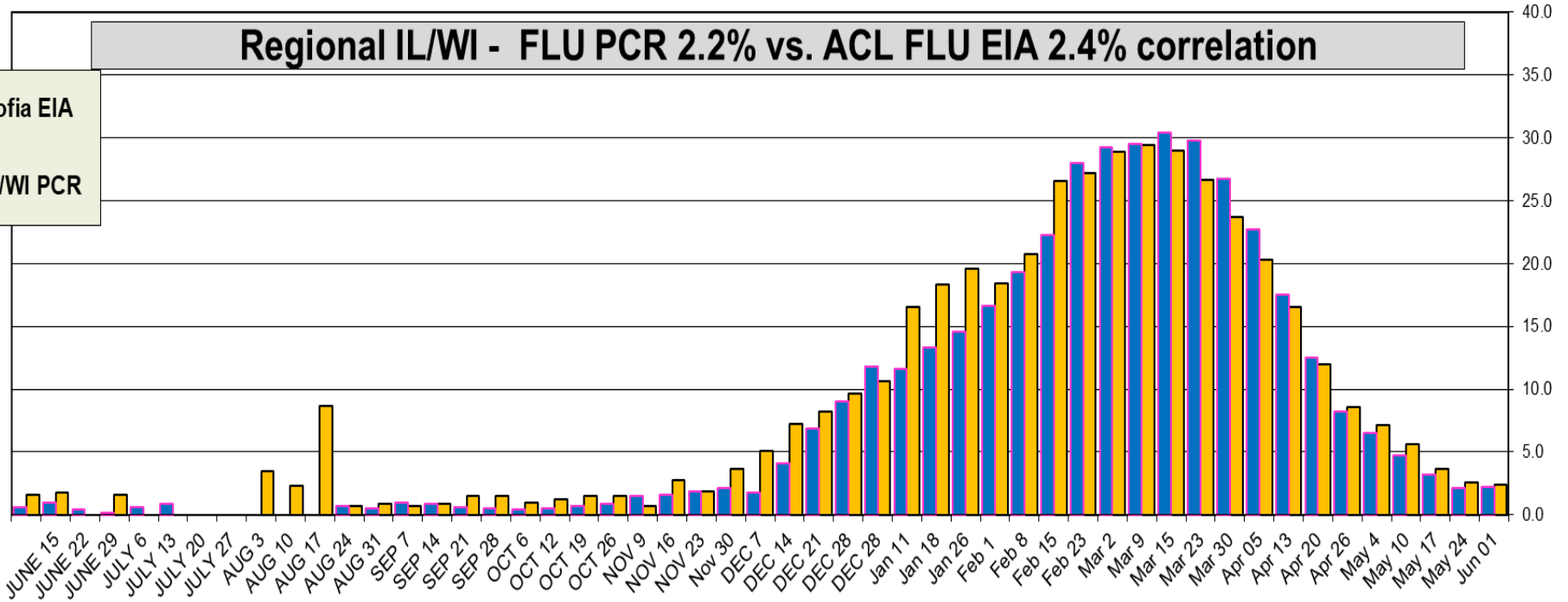
ACL RESP. PANEL - RSV PCR - 0.5%, RSV EIA - 0.0%

- EIA RSV
- RSV PCR



Regional IL/WI - FLU PCR 2.2% vs. ACL FLU EIA 2.4% correlation

- Sofia EIA
- IL/WI PCR

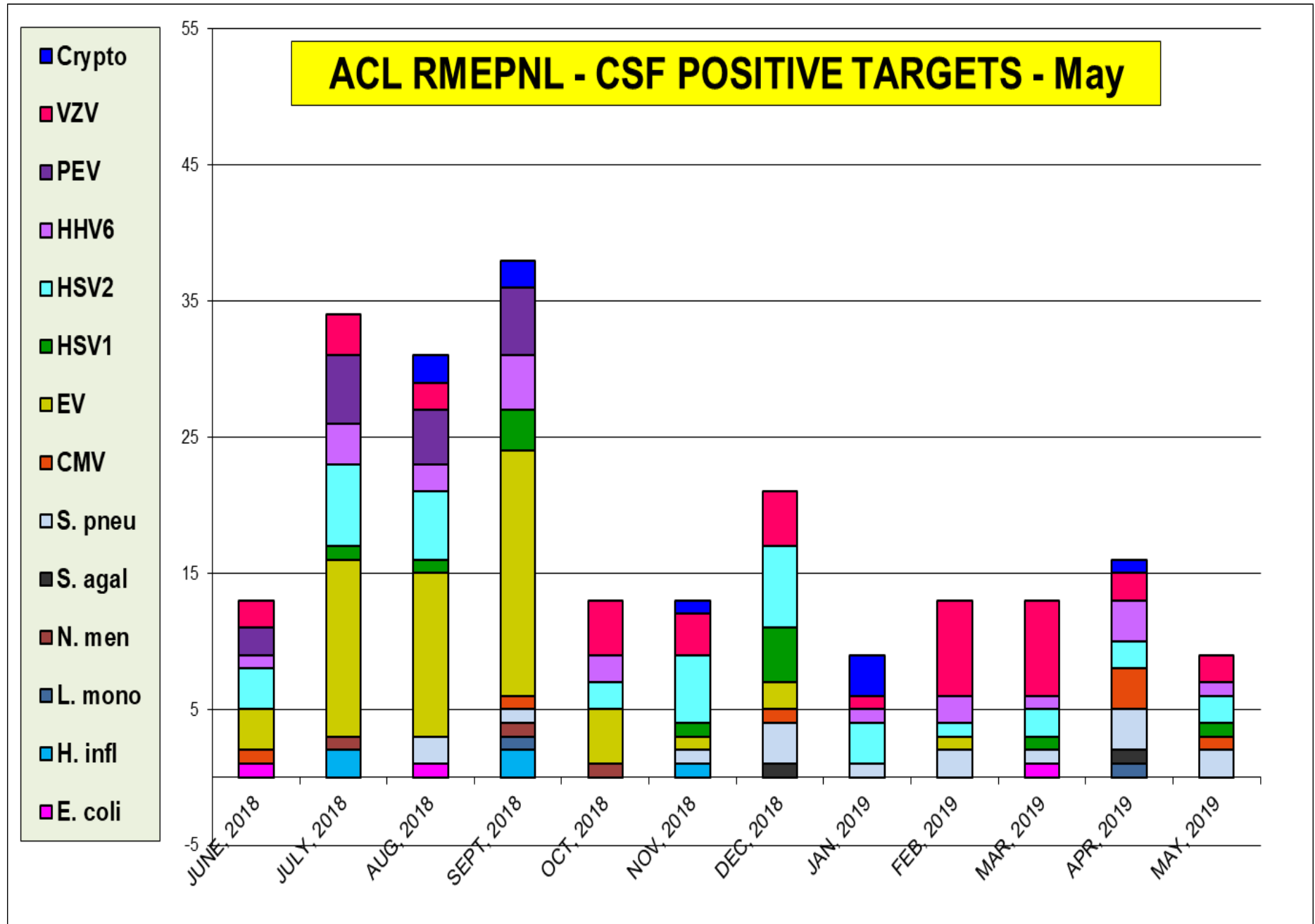


Correlation between RPPNL (FLU PCR) and Sofia (FLUAG) - Accuracy is 94.4%

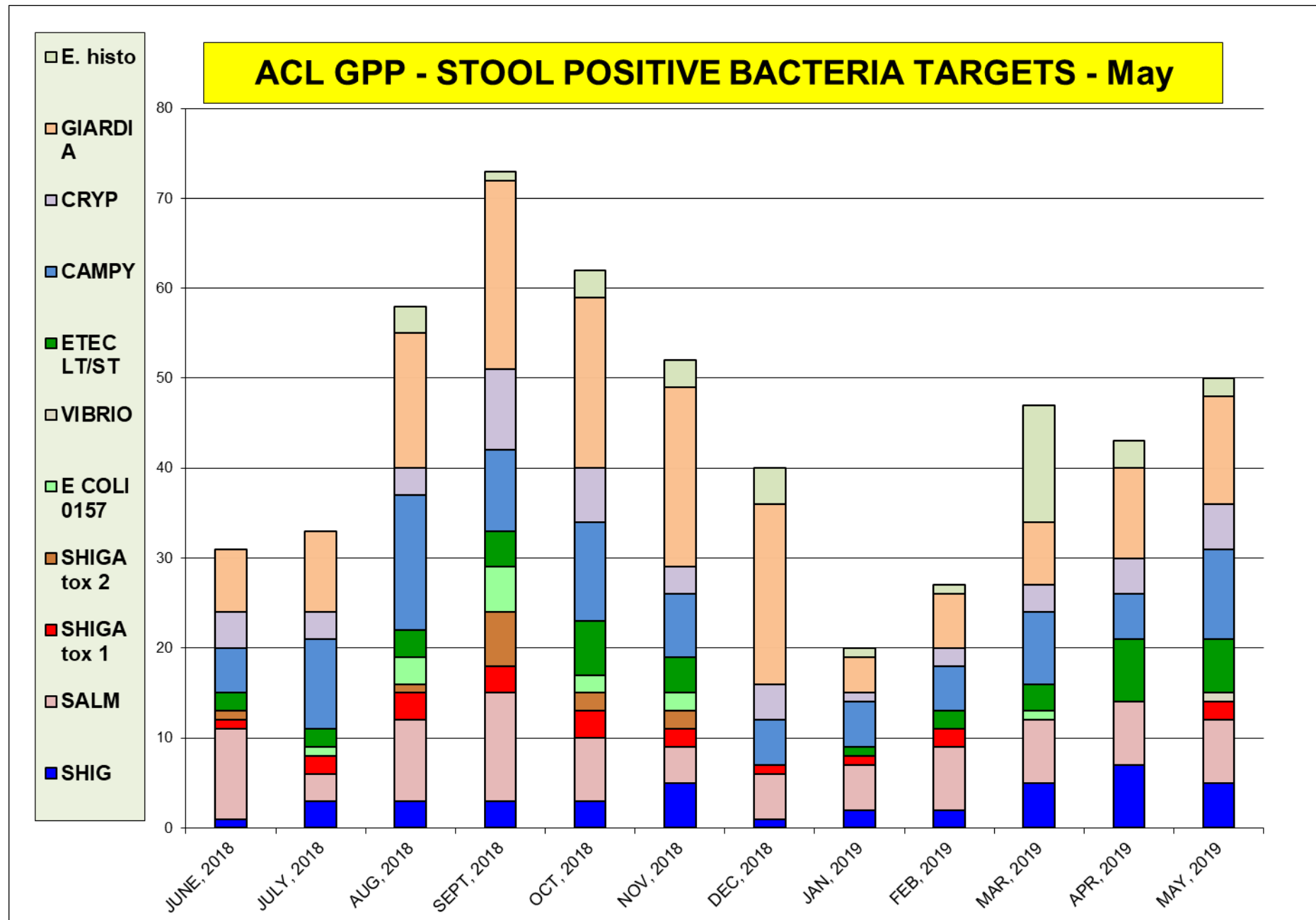
In last three months, a 2990 samples were tested by both methods most of them negative, 161/2990 samples were positive by EIA when confirmed by PCR. 160 negative EIA samples were tested positive by PCR method. *(ACL correlation data is compiled on samples collected within <48 h). Since positive rate is under-represented and provides correlation on very small fraction of positive samples – interpret clinical sensitivity with caution.*

02/02/19 to 06/01/2019				
FLUAG (Sofia) vs RPPNL (PCR) correlation				
		RPPNL		
		+	-	Total
FluAG	+	161	4	165
	-	160	2665	2825
		Total		2990
%				
50.2	Clinical Sensitivity			
99.9	Clinical Specificity			
97.6	Positive Predictive Value (PPV)			
94.3	Negative Predictive Value (NPV)			
94.5	Accuracy			

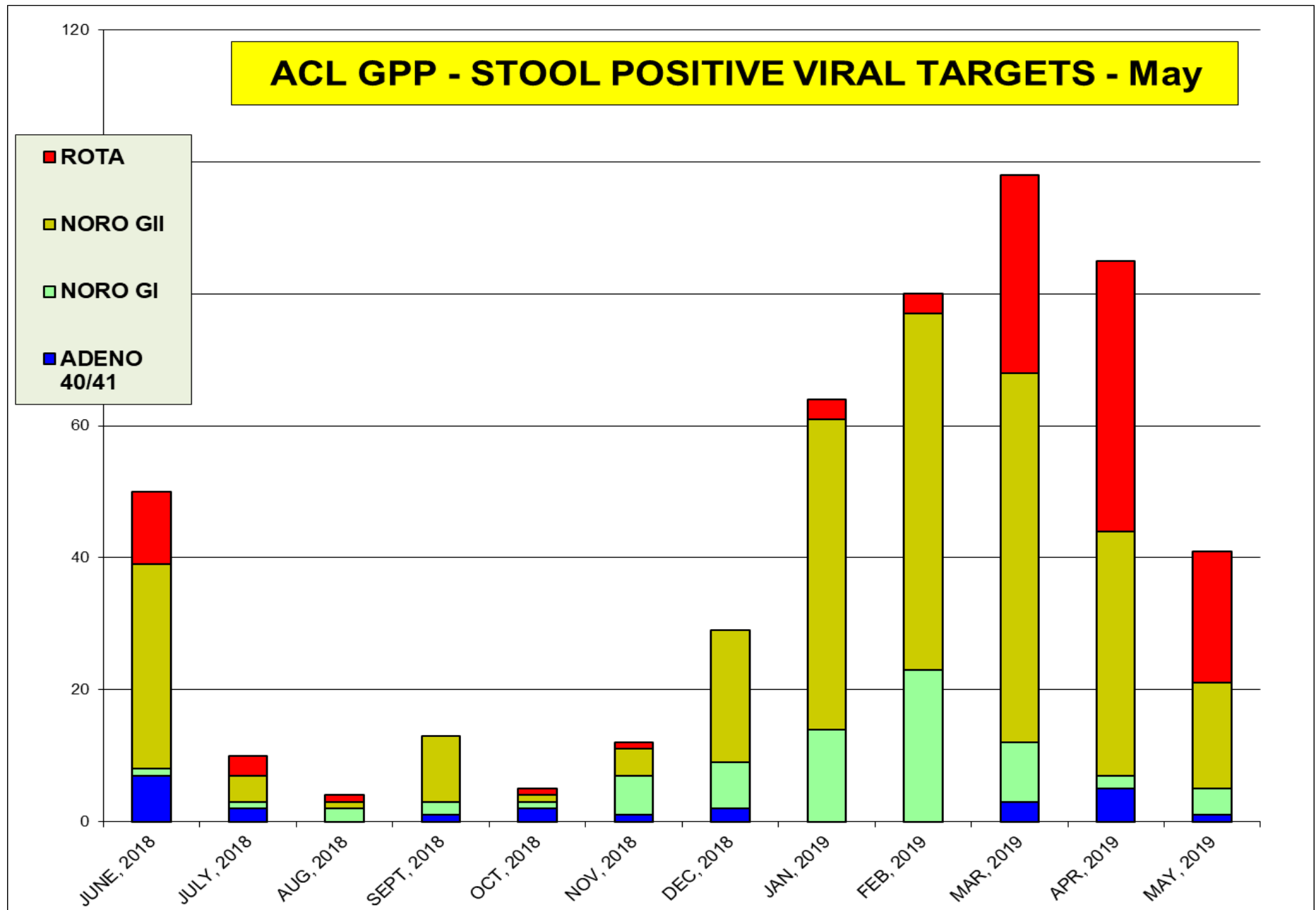
The most prevalent targets were **HSV2** and **VZV** – total pos. rate 4.5 %



The most prevalent bacterial targets were **Campylobacter** and **Giardia**



The most prevalent virus target was **Norovirus (3.5%) Rotavirus (4.5%) pos. rate**



BV	C.ALB	C.GLB	C.KUR	T.VAG	M.GEN	M.HOM	U.PAV	Tot. pos.
4,917	4,673	4,673	4,673	4,618	2,307	2,307	2,307	4,972
26.3	15.4	2.2	0.3	3.8	0.4	21.5	53.8	81.5

