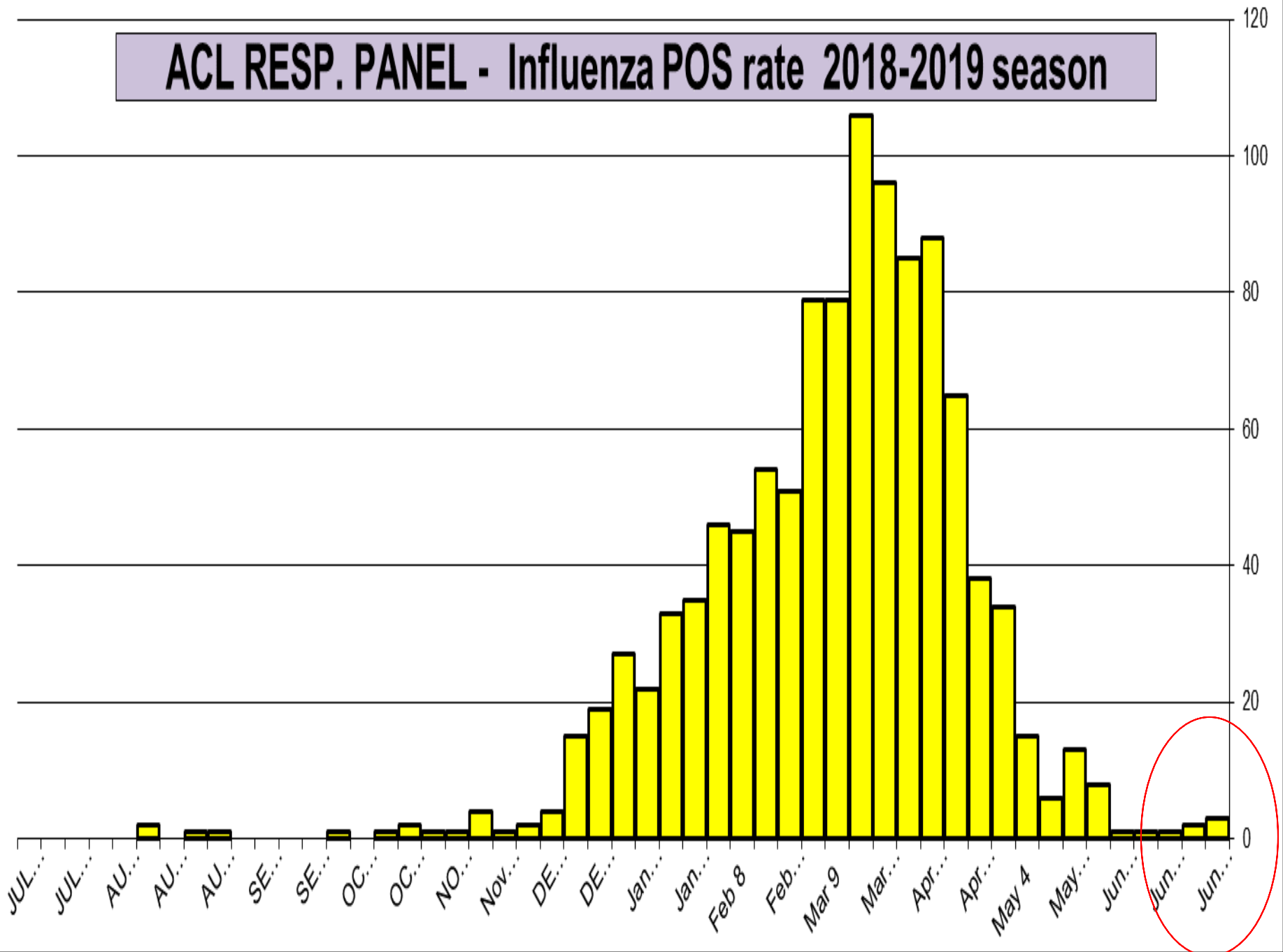


Respiratory Pathogens - June 29 2019

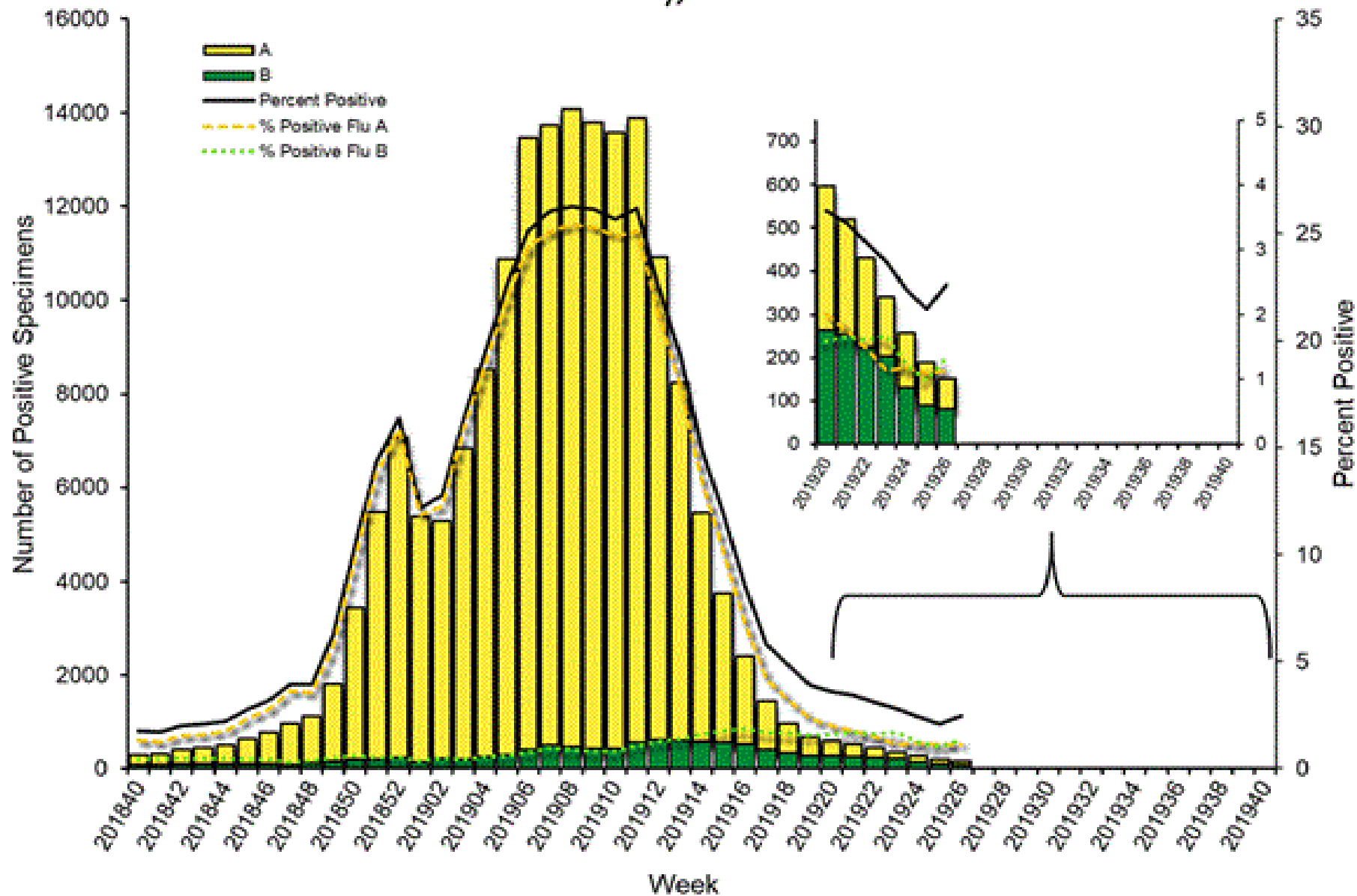
Week	InfA-H1	InfA-H3	2009 H1N1	Inf B	RSV	All Para	EV / Rhino	Meta pneumo	Adeno	All Corona	Bocca	Myco plasma	Chla mydia	Total Pos	POS FLU	Total	ACL %FLU	US %FLU	IL/WI PCR	Sofia EIA
June 29	0	1	1	1	1	26	54	17	9	0	1	1	0	112	3	694	0.4	2.5	1.5	3.1
June 21	0	0	2	0	0	25	61	23	10	4	3	1	0	129	2	718	0.3	2.1	0.9	2.2
June 14	0	1	0	0	2	33	59	26	5	0	6	0	0	132	1	754	0.1	2.6	1.6	2.6
June 07	0	2	1	0	3	33	62	24	5	2	3	1	0	136	1	630	0.2	2.9	1.7	2.4
Jun 01	0	0	1	0	4	37	60	31	7	4	5	0	0	149	1	743	0.1	3.1	2.1	2.6
May 24	0	2	3	3	2	50	100	35	9	7	5	0	3	219	8	1045	0.8	3.1	3.2	3.7
May 17	0	8	4	1	5	35	62	36	8	7	6	0	0	172	13	1268	1.0	3.1	4.7	5.6
May 10	1	2	2	1	7	49	53	32	5	8	6	0	1	167	6	1028	0.6	3.1	6.5	7.2
May 4	0	6	7	2	3	51	60	34	6	10	3	1	1	184	15	761	2.0	3.1	8.2	8.5
Apr 26	0	13	15	6	14	29	49	37	5	19	4	1	2	194	34	800	4.3	3.1	12.5	12.0
Apr 20	0	16	17	5	8	34	58	47	2	19	8	2	1	217	38	827	4.6	3.1	17.5	16.6
Apr 13	0	24	33	8	12	28	68	59	8	28	12	1	1	282	65	893	7.3	3.1	22.7	20.3
Apr 05	0	55	26	7	17	33	62	35	5	40	1	1	3	285	88	893	9.9	3.1	26.7	23.7
Mar 30	0	37	45	3	15	25	56	31	6	34	11	1	2	266	85	936	9.1	3.1	29.8	26.6

Flu PCR
% Rate

ACL RESP. PANEL - Influenza POS rate 2018-2019 season



Influenza Positive Tests Reported to CDC by U.S. Clinical Laboratories, National Summary, 2018-2019 Season



ACL RESP. PANEL - POSITIVITY RATE Selected viruses

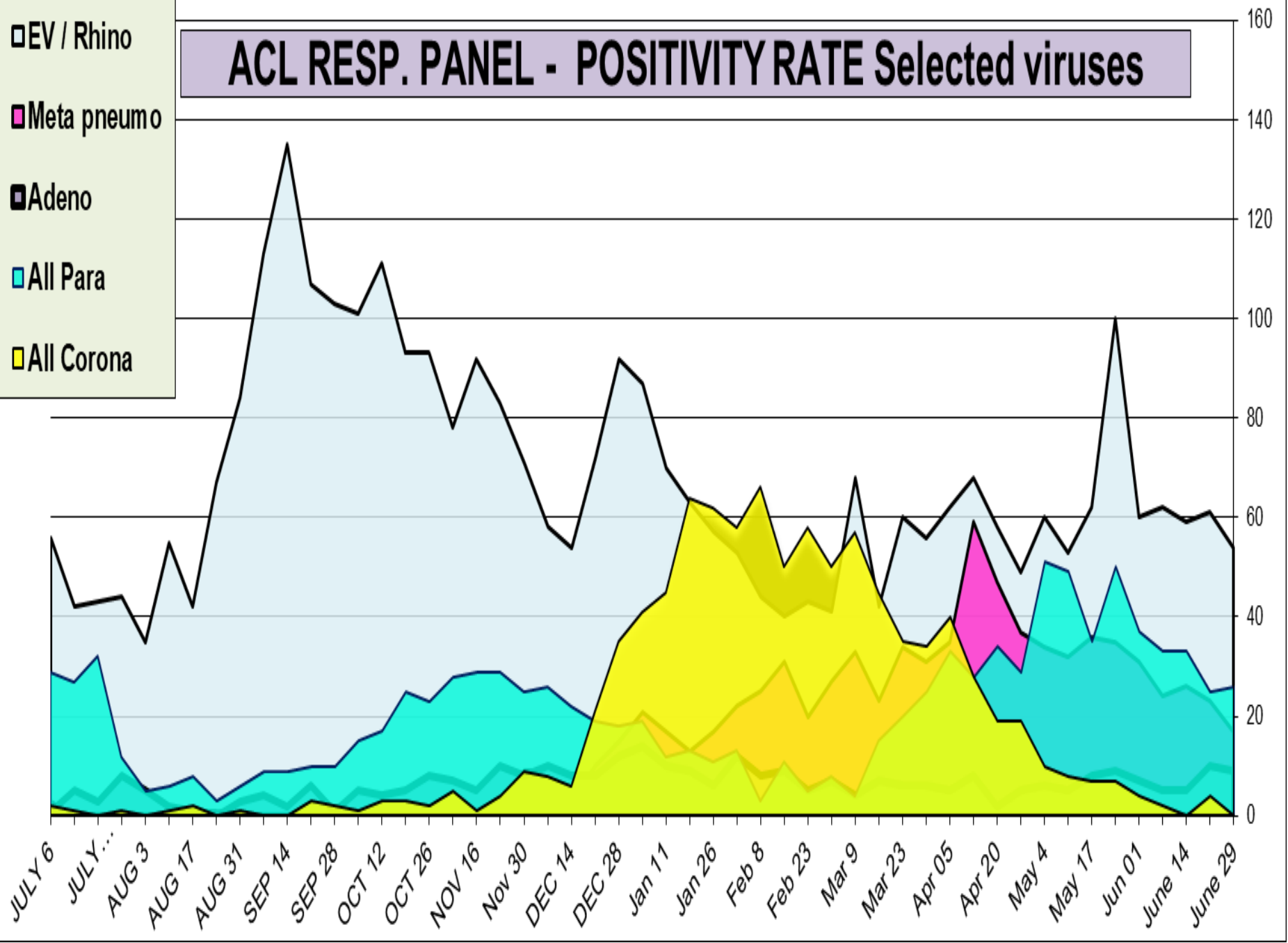
□ EV / Rhino

■ Meta pneumo

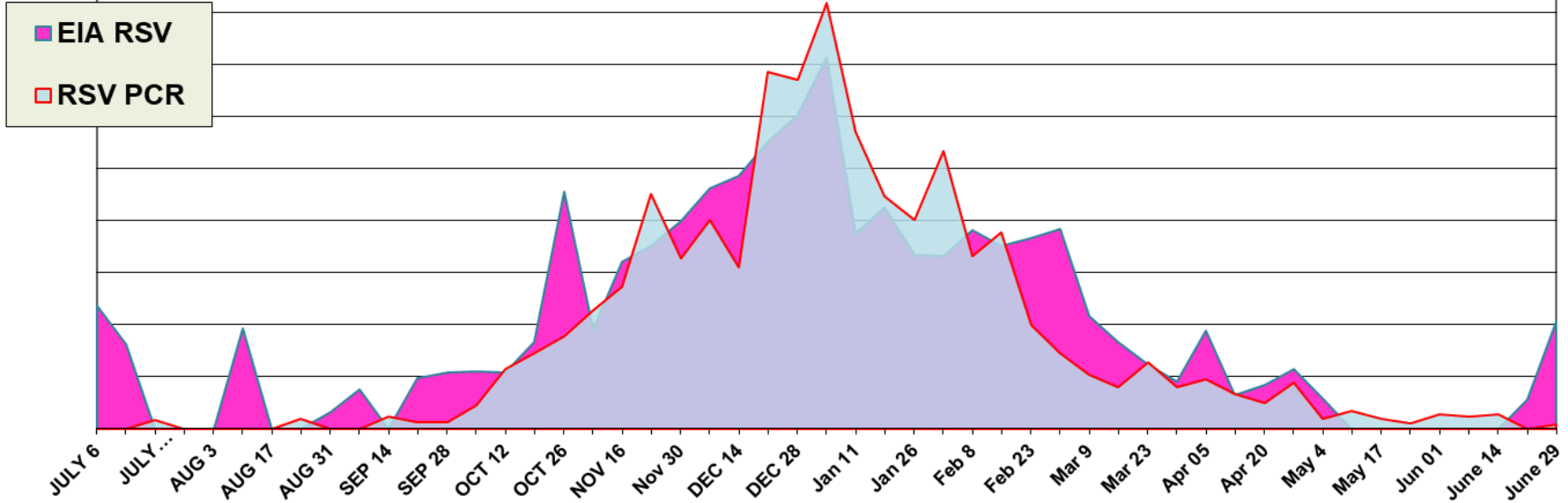
■ Adeno

■ All Para

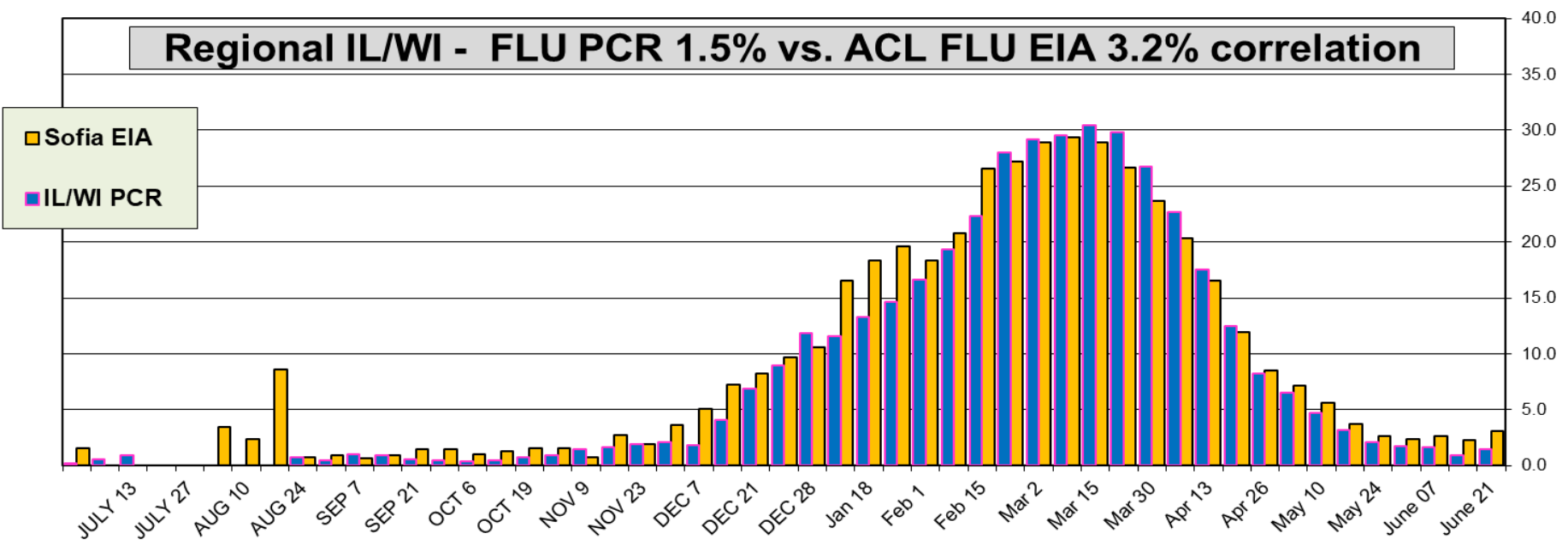
■ All Corona



ACL RESP. PANEL - RSV PCR - 0.1%, RSV EIA - 4.1%



Regional IL/WI - FLU PCR 1.5% vs. ACL FLU EIA 3.2% correlation

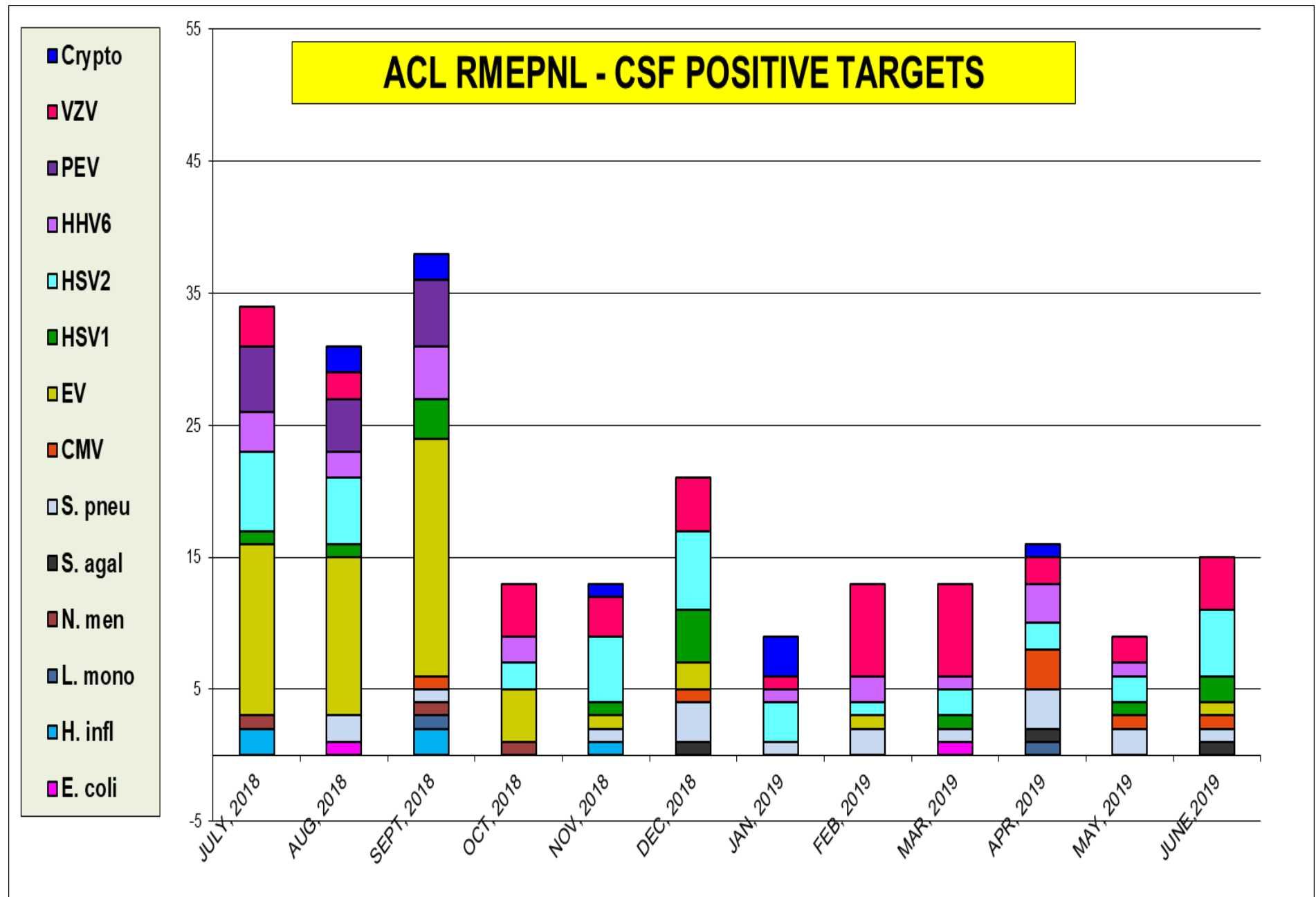


Correlation between RPPNL (FLU PCR) and Sofia (FLUAG) - Accuracy is 94.7%

In last three months, 3079 samples were tested by both methods most of them negative, 162/3079 samples were positive by EIA when confirmed by PCR. 161 negative EIA samples were tested positive by PCR method. *(ACL correlation data is compiled on samples collected within <48 h). Since positive rate is under-represented and provides correlation on very small fraction of positive samples – interpret clinical sensitivity with caution.*

02/02/19 to 06/022/2019				
FLUAG (Sofia) vs RPPNL (PCR) correlation				
		RPPNL		
		+	-	Total
FluAG	+	162	4	166
	-	160	2753	2913
			Total	3079
%				
50.3	Clinical Sensitivity			
99.9	Clinical Specificity			
97.6	Positive Predictive Value (PPV)			
94.5	Negative Predictive Value (NPV)			
94.7	Accuracy			

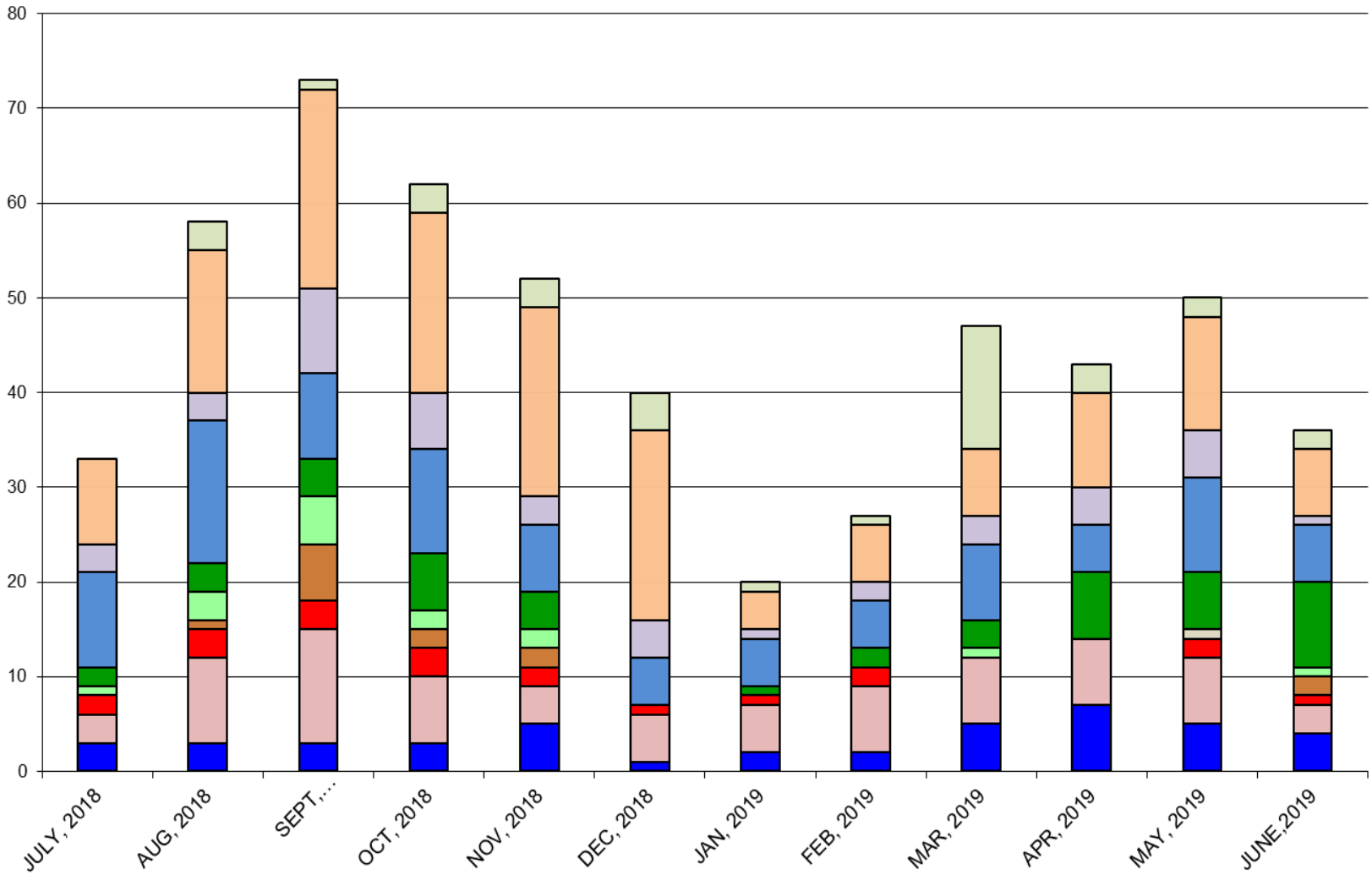
The most prevalent targets were **HSV2**



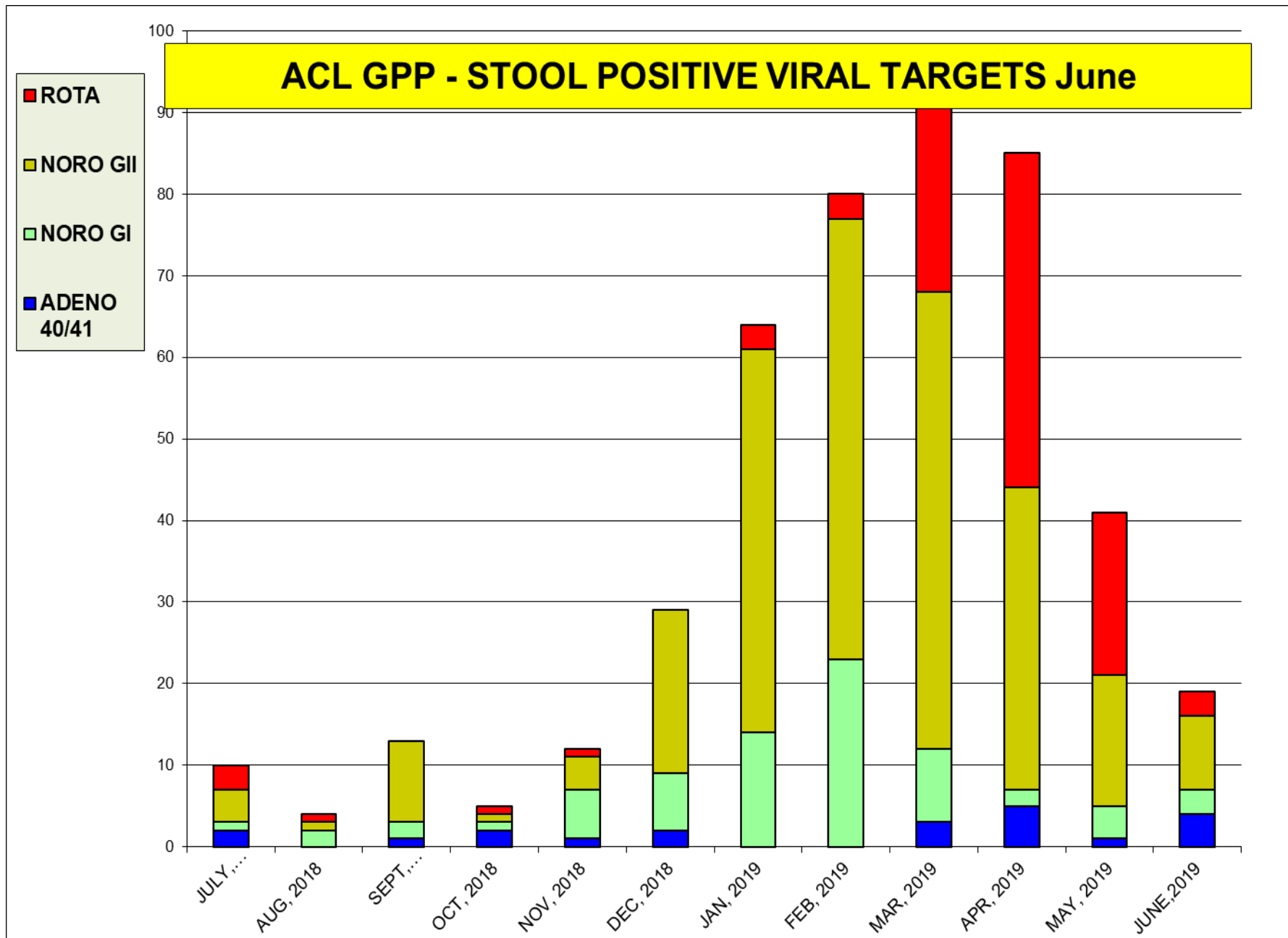
The most prevalent bacterial targets were **ETEC** and **Campylobacter**

ACL GPP - STOOL POSITIVE BACTERIA TARGETS June

- E. histo
- GIARDIA
- CRYP
- CAMPY
- ETEC LT/ST
- VIBRIO
- E COLI 0157
- SHIGA tox 2
- SHIGA tox 1
- SALM
- SHIG



The most prevalent virus target was **Norovirus**



BV	C.ALB	C.GLB	C.KUR	T.VAG	M.GEN	M.HOM	U.PAV	Tot. pos.
4,990	4,931	4,931	4,931	4,920	3,252	3,252	3,252	5,001
25.4	14.4	2.0	0.3	3.5	0.4	15.1	37.7	79.8

