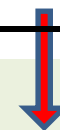
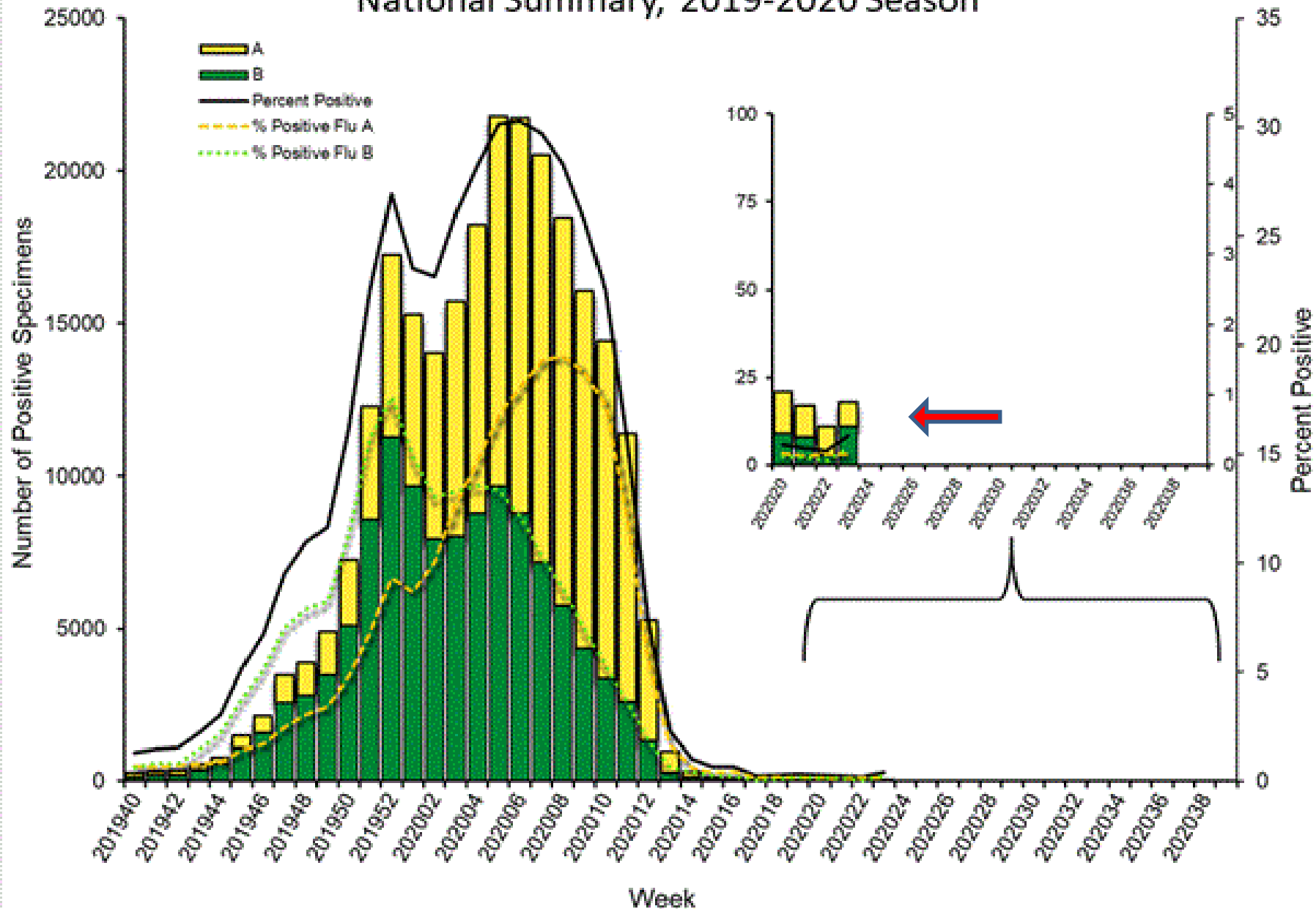


## Respiratory Pathogens - 06 13 2020

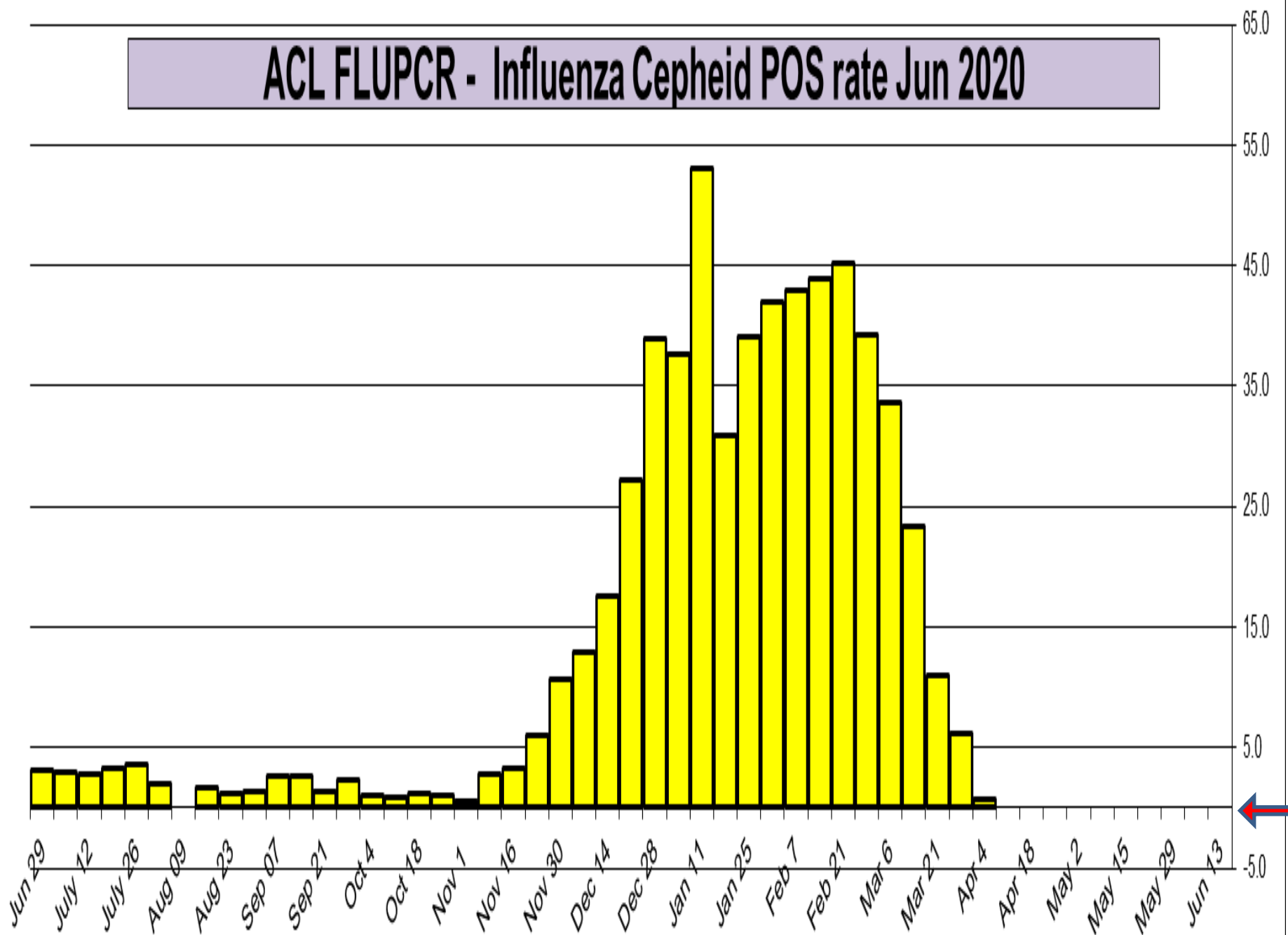


Week	InfA-H1	InfA-H3	2009 H1N1	Inf B	RSV	All Para	EV/ Rhino	Meta pneumo	Adeno	All Corona	Bocca	Myc. pneumo	Chlam. pneumo.	Leg. pneumo.	BP/ BPP	Total Pos	POS FLU	Total	ACL RPPNL	US %FLU	IL/WI PCR	ACL FLUPCR	COVID ACL PCR %	COV19 IL %	COV19 WI %
Jun 13	0	0	0	0	0	0	1	0	0	0	1	0	0	0	0	2	0	49	0.0	n/a	n/a	0.0	3.5	4.5	2.5
Jun 6	0	0	0	0	0	0	2	0	1	0	1	0	0	0	0	4	0	115	0.0	0.2	0.2	0.0	3.6	5.7	2.0
May 29	0	0	0	0	0	0	1	0	1	1	0	0	0	0	0	3	0	51	0.0	0.2	0.2	0.0	5.5	6.7	4.3
May 22	0	0	0	0	0	1	2	1	0	0	0	1	0	0	1	6	0	102	0.0	0.3	0.3	0.0	7.0	9.0	4.4
May 15	0	0	0	0	0	0	2	0	0	0	2	1	0	0	1	6	0	168	1.7	0.3	0.3	0.0	8.0	10.0	5.4
May 8	0	0	0	0	0	0	1	0	0	0	0	0	0	0	1	1	0	71	0.0	0.3	0.4	0.0	12.2	17.0	7.0
May 2	0	0	0	0	0	0	0	1	1	0	1	1	0	0	1	5	0	55	0.0	0.3	0.4	0.0	16.0	19.7	9.4
Apr 26	0	0	0	0	0	0	2	0	1	0	0	0	0	0	0	3	0	62	0.0	0.2	0.2	0.0	18.4	25.0	13.0
Apr 18	0	0	0	0	1	1	1	0	0	0	0	0	0	0	0	3	0	34	0.0	0.4	0.6	0.0	22.4	29.0	15.0
Apr 11	0	0	1	0	1	1	5	3	0	1	0	1	1	0	0	14	1	37	1.7	0.4	0.6	0.0	24.9	30.0	16.0
Apr 4	0	0	0	0	3	0	5	6	5	1	0	1	0	0	1	22	0	66	0.0	0.8	1.1	0.7	27.3	32.0	18.0
Mar 27	0	0	4	7	17	4	49	38	13	22	3	0	0	0	1	168	11	121	9.1	2.1	2.6	6.2	25.3	28.0	14.0
Mar 21	0	0	77	20	53	6	174	99	25	54	8	3	2	0	3	530	103	1691	6.1	7.3	10.4	11.0	15.8	15.8	10.0
Mar 14	0	7	112	26	45	5	121	72	16	50	9	3	3	0	3	493	166	1319	12.6	14.8	20.2	23.3	n/a	n/a	n/a
Mar 6	0	3	103	16	43	8	113	81	6	23	7	0	1	0	4	421	135	1063	12.7	22.2	29.7	33.7	n/a	n/a	n/a

# Influenza Positive Tests Reported to CDC by U.S. Clinical Laboratories, National Summary, 2019-2020 Season

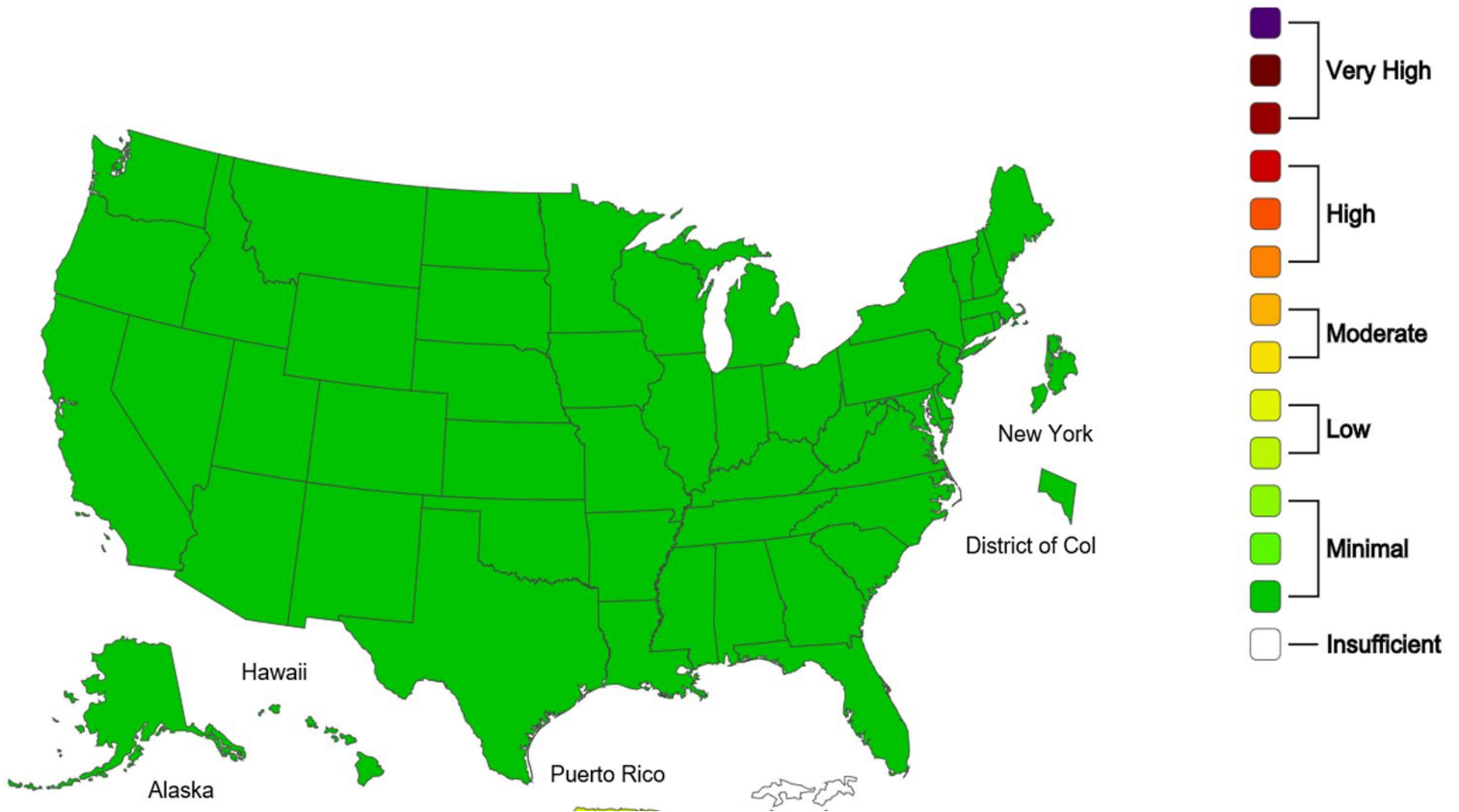


# ACL FLUPCR - Influenza Cepheid POS rate Jun 2020



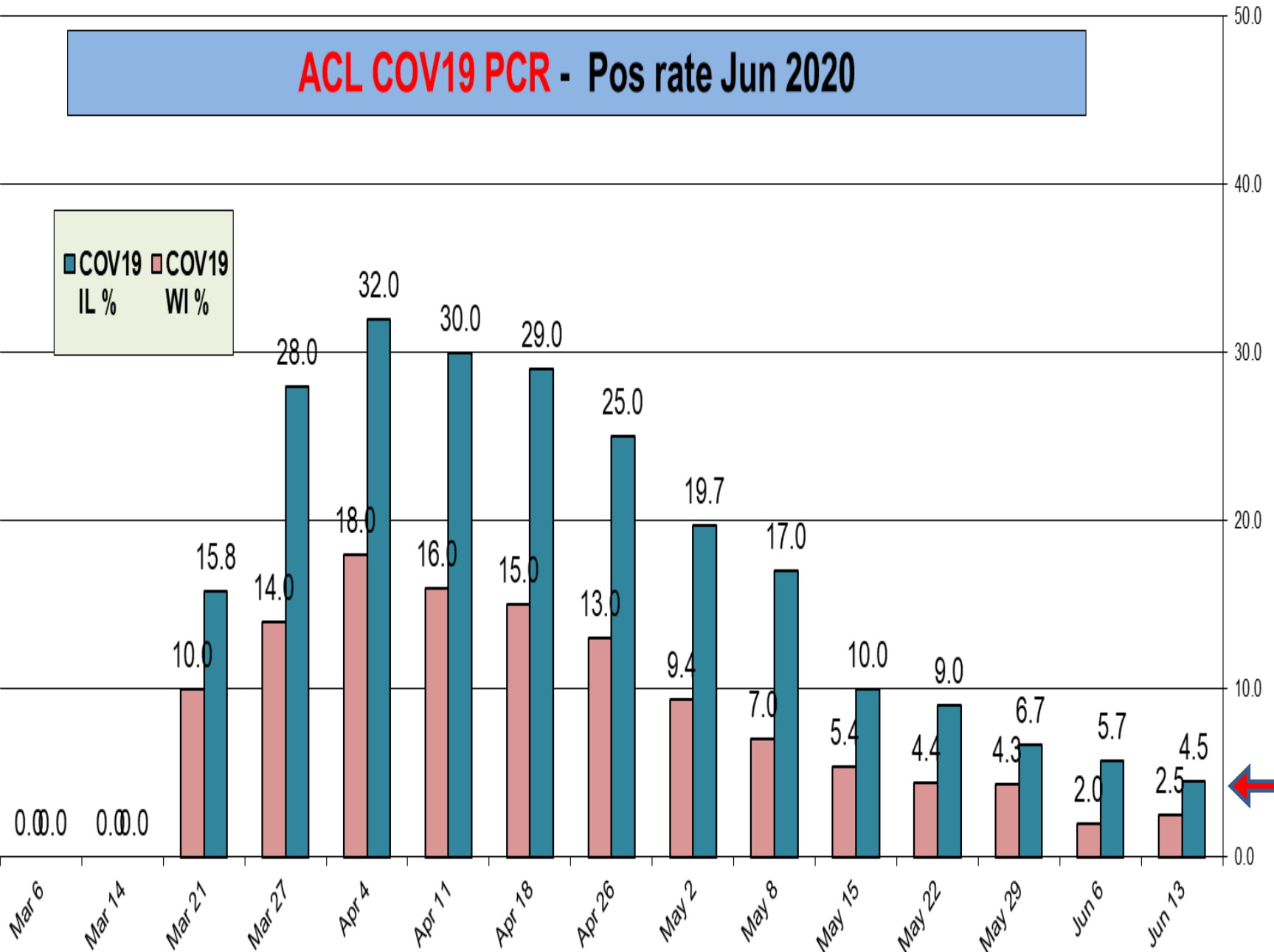
2019-20 Influenza Season Week 23 ending Jun 06, 2020

ILI Activity Level

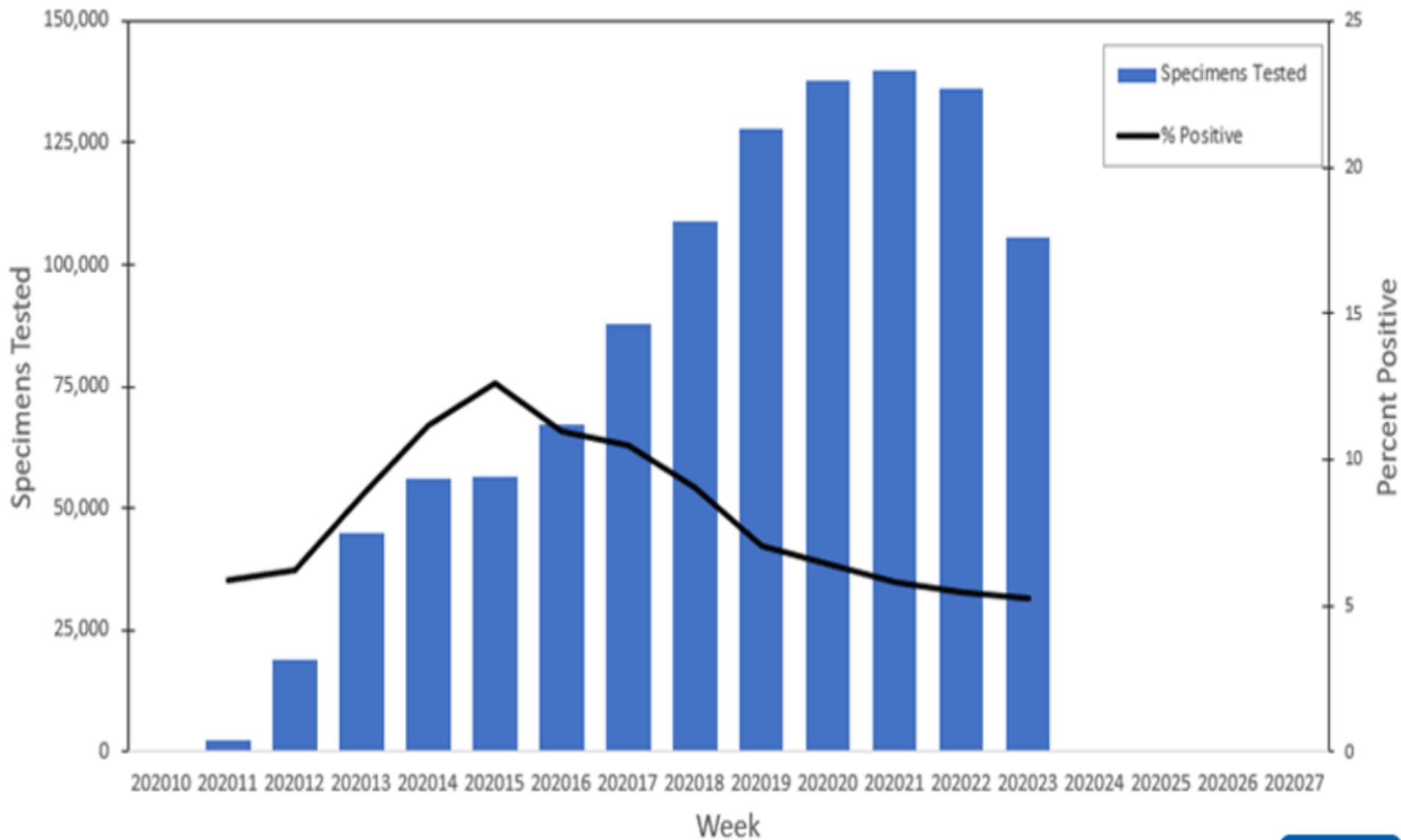


# ACL COV19 PCR - Pos rate Jun 2020

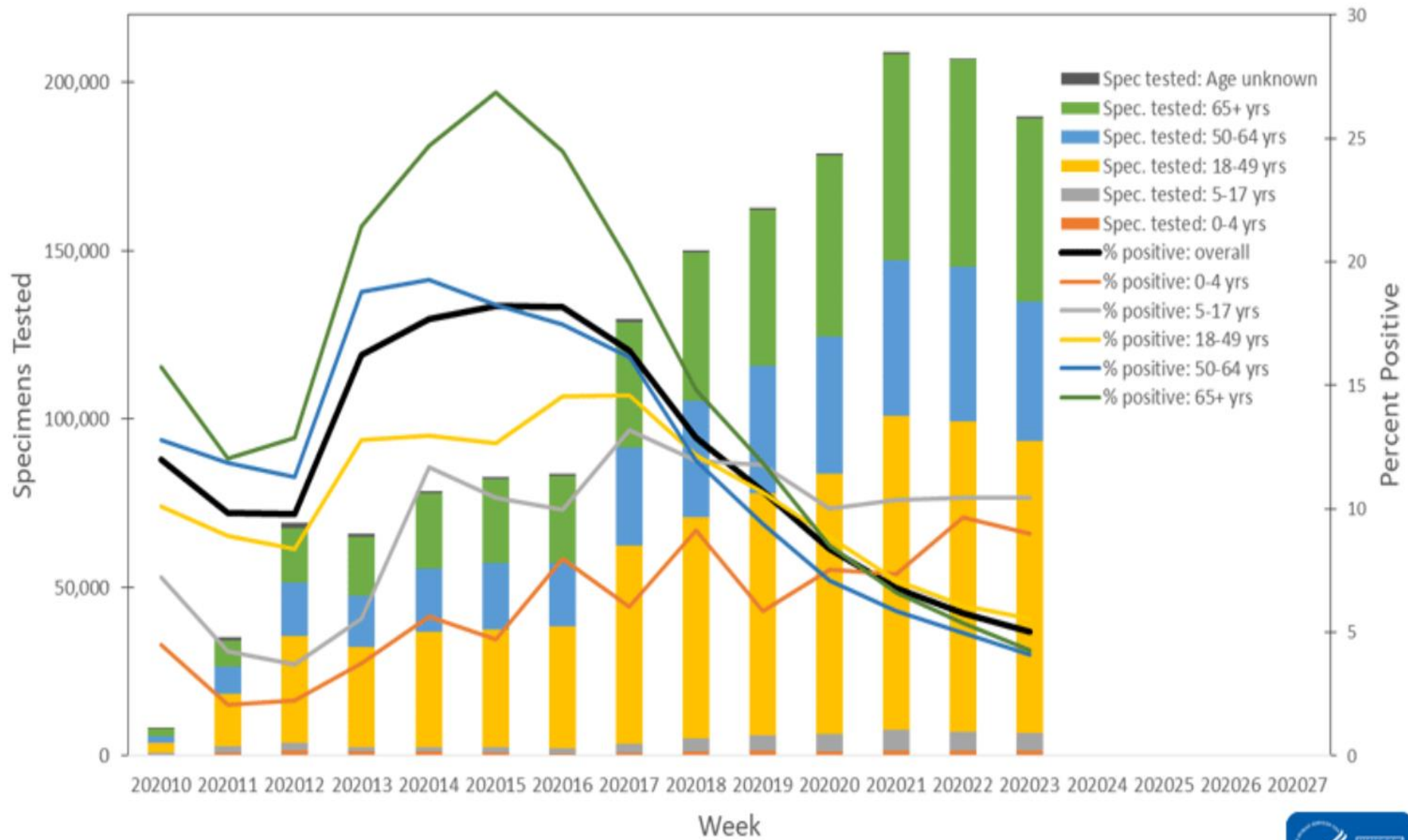
■ COV19 IL %  
■ COV19 WI %



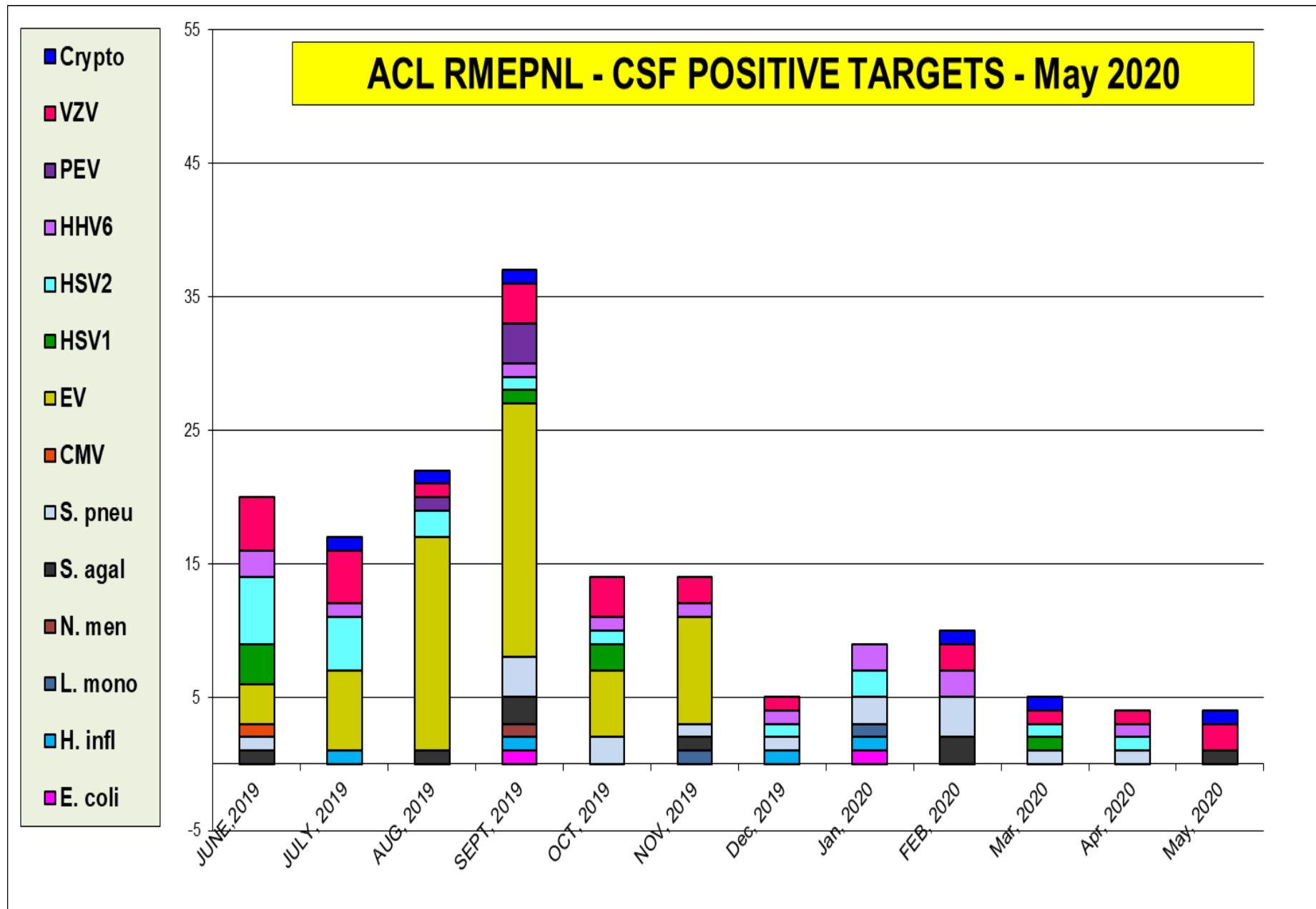
U.S. Clinical Laboratories Reporting to the National Respiratory and Enteric Virus Surveillance System:  
Number of Specimens Tested and Percent Positive for SARS-CoV-2  
March 8, 2020 - June 6, 2020



U.S. State and Local Public Health Laboratories Reporting to CDC:  
 Number of Specimens Tested and Percent Positive for SARS-CoV-2  
 March 1, 2020 – June 6, 2020

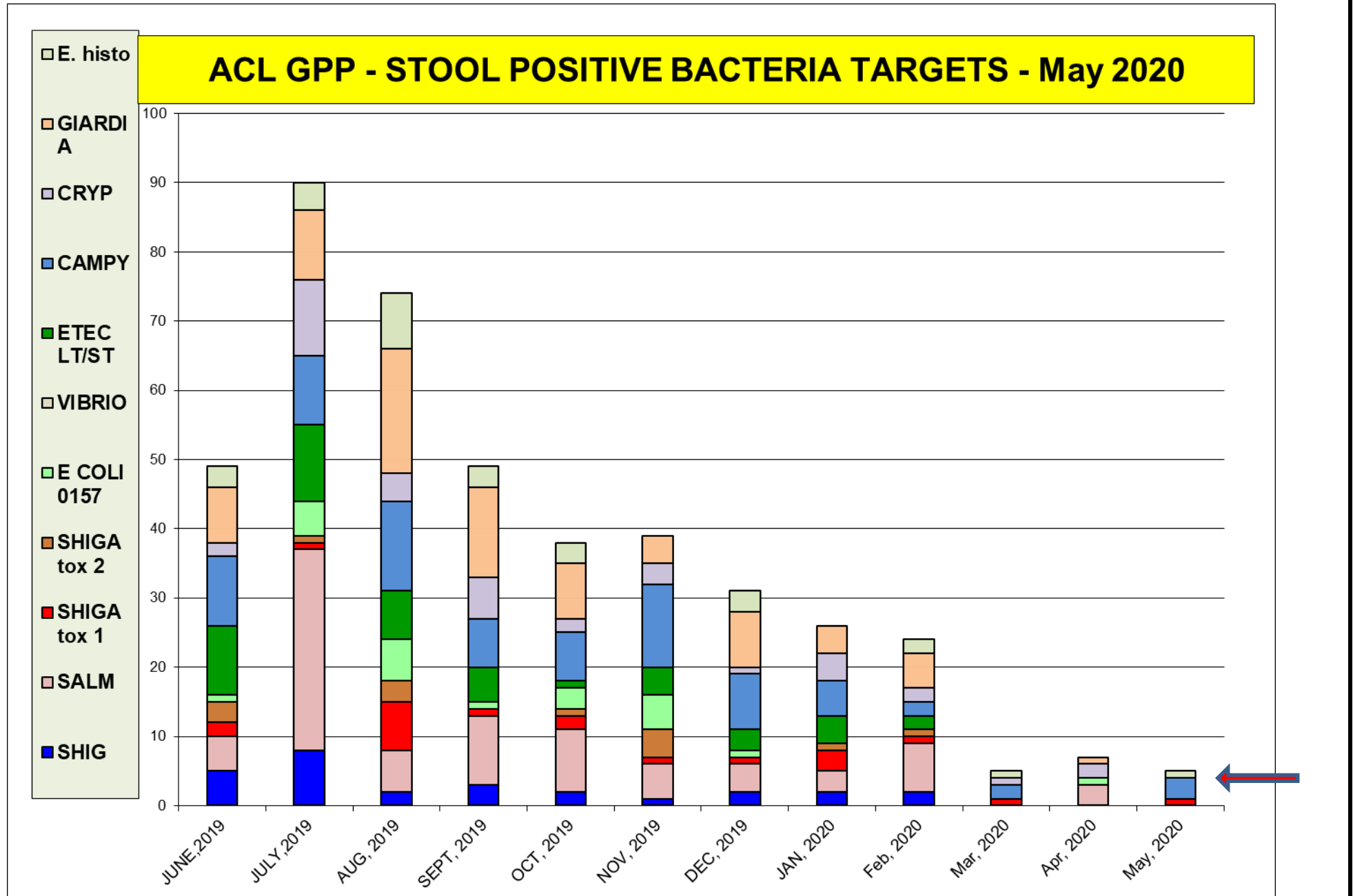


The most prevalent target -all CSF viruses pos rate is 5 %

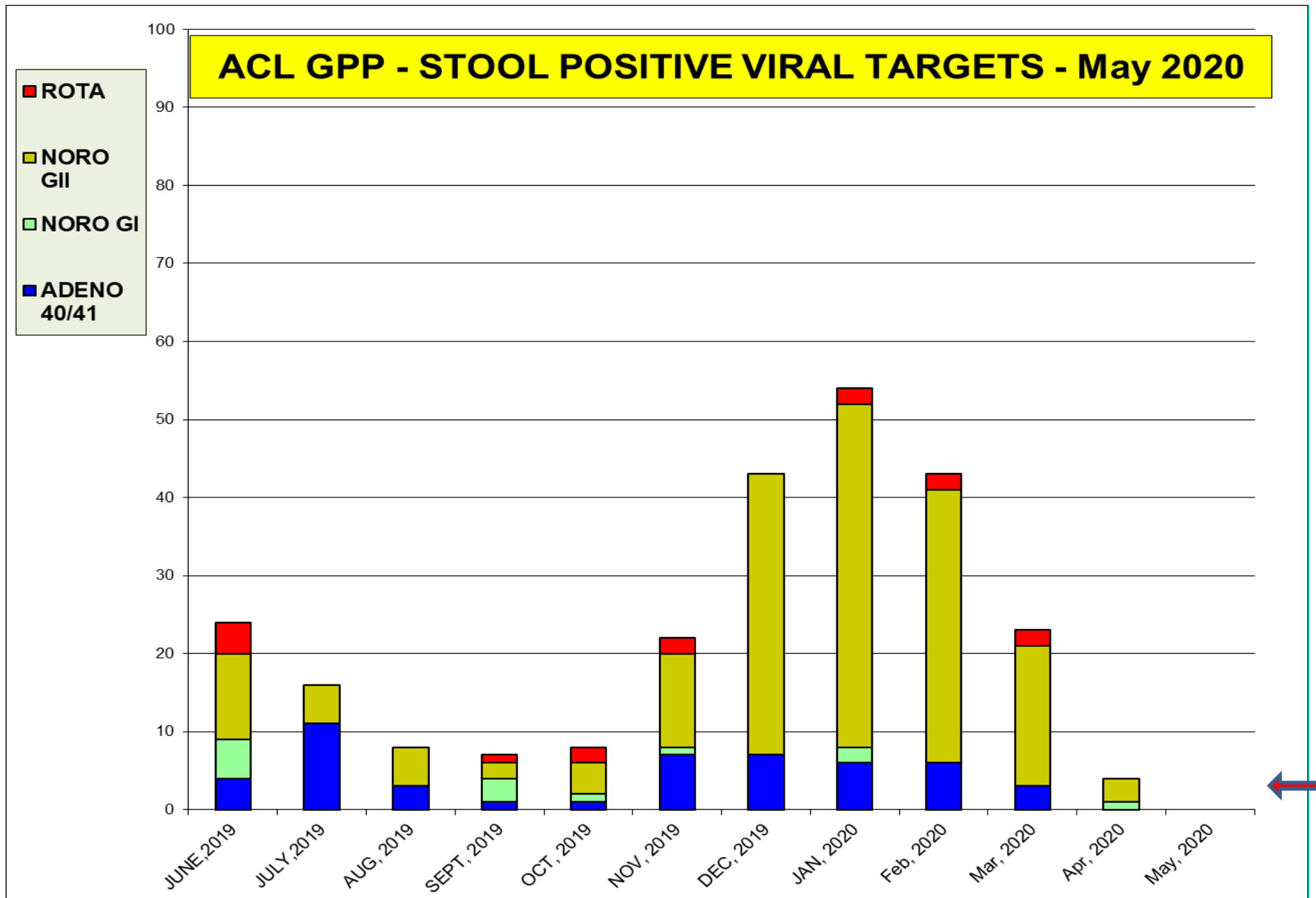




The most prevalent bacterial targets in May (Campylobacter)



# The most prevalent virus targets in May



## May positivity rate (%)

BV	C.ALB	C.GLB	C.KUR	T.VAG	M.GEN	M.HOM	U.PAV
<b>20</b>	<b>17</b>	<b>2</b>	<b>0</b>	<b>2</b>	<b>2</b>	<b>3</b>	<b>10</b>

