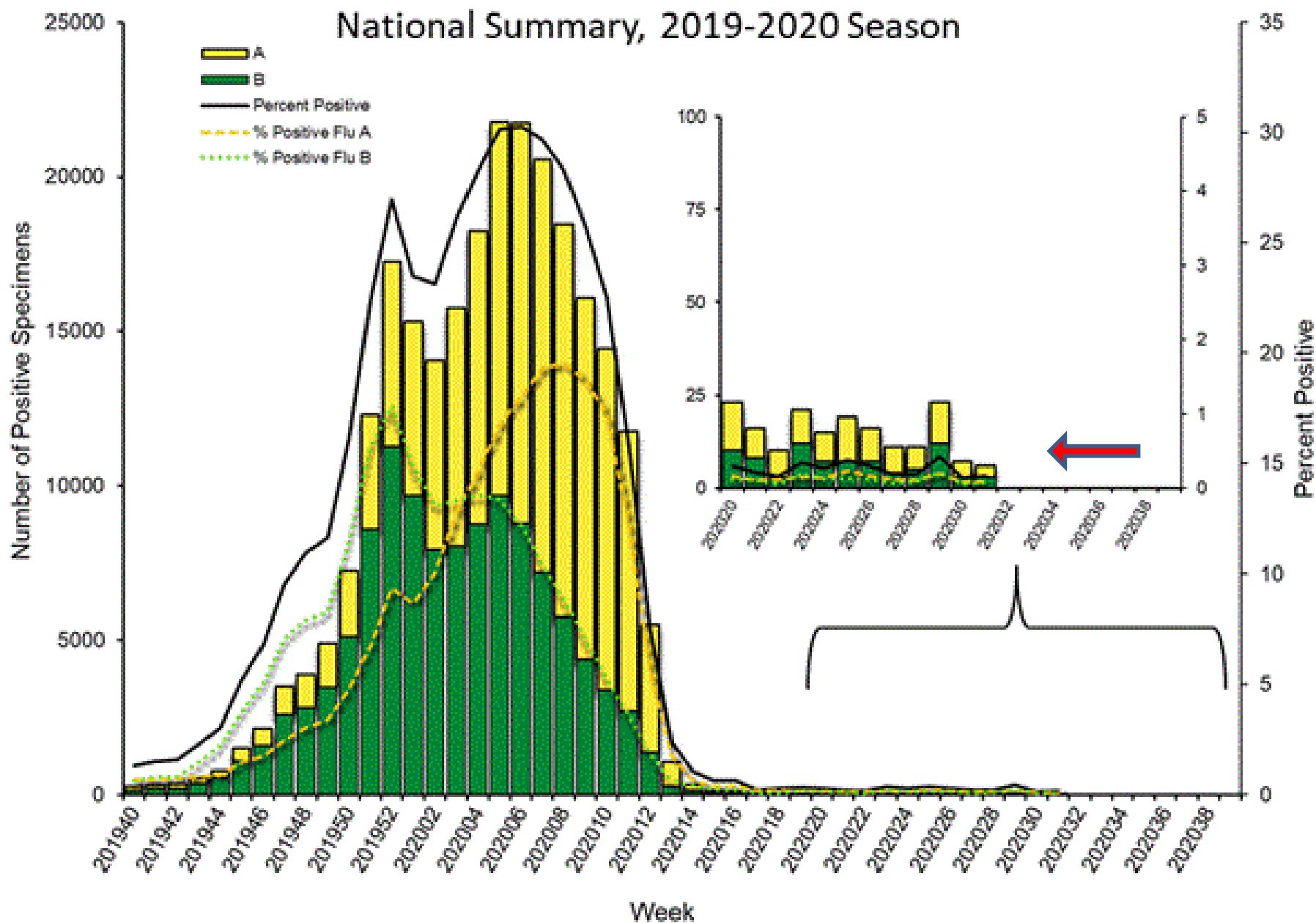


Respiratory Pathogens - 07 31 2020



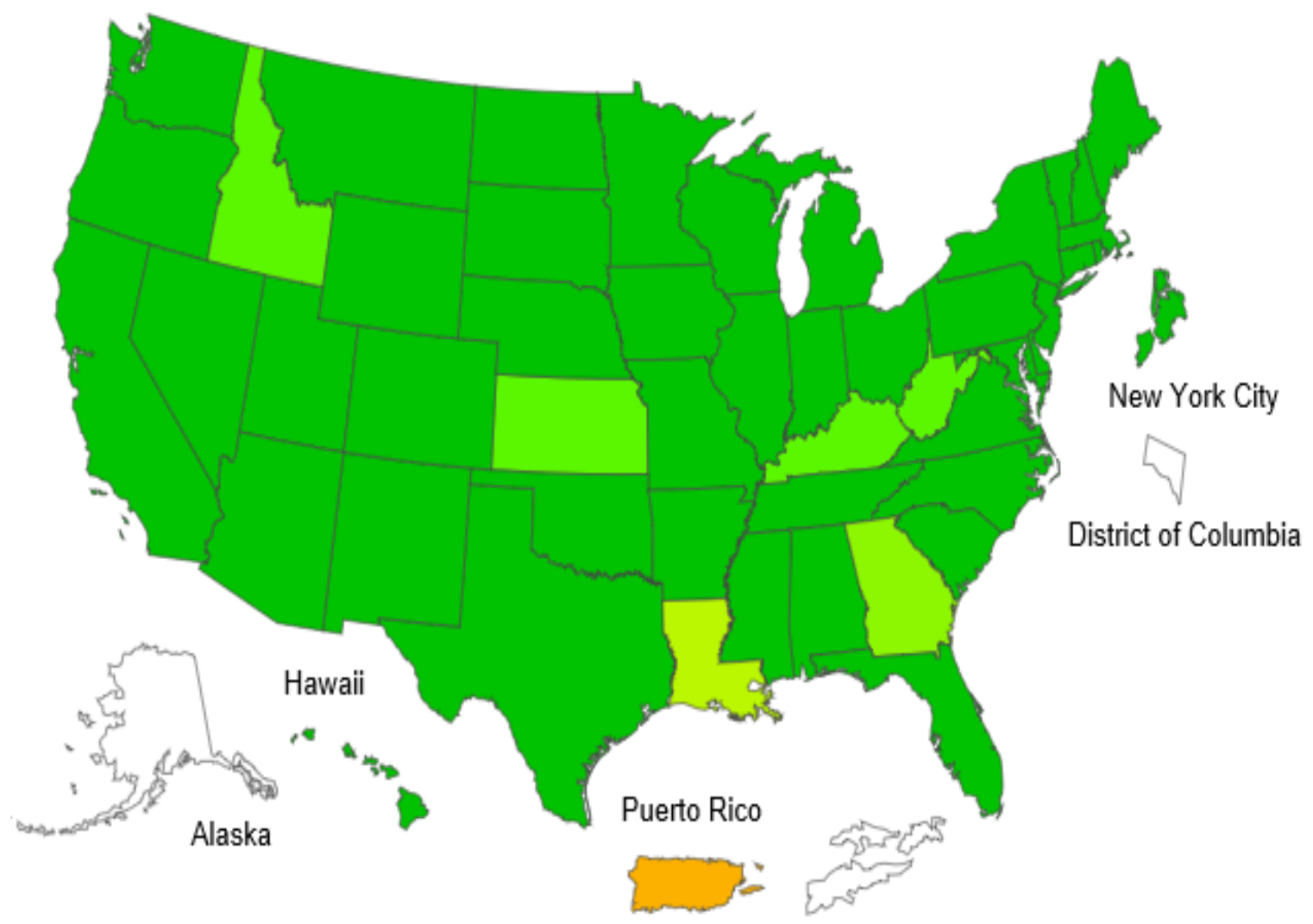
Week	InfA-H1	InfA-H3	2009 H1N1	Inf B	RSV	All Para	EV / Rhino	Meta pneumo	Adeno	All Corona	Bocca	Myc. pneumo	Chlam. pneumo.	Leg. pneumo.	BP / BPP	Total Pos	POS FLU	Total	ACL RPPNL	US %FLU	IL/WI PCR	ACL FLUPCR	COVID ACL Total %	COVID IL %	COVID WI %
July 31	0	0	0	0	0	0	2	0	0	0	0	0	0	0	0	0	0	114	0.0	n/a	n/a	0.0	6.0	4.4	7.4
Jul 25	0	0	0	0	0	0	1	0	0	0	0	0	0	0	0	0	0	53	0.0	0.2	0.0	0.0	6.0	4.5	7.4
Jul 18	0	0	0	0	0	0	0	0	0	0	0	0	0	0	0	0	0	36	0.0	0.1	0.5	0.0	6.0	4.1	7.4
Jul 11	0	0	0	0	0	0	0	0	0	0	0	0	0	1	0	1	0	92	0.0	0.3	0.3	0.0	5.3	3.6	6.9
Jul 3	0	0	0	0	0	0	2	0	0	0	1	0	0	0	0	3	0	91	0.0	0.3	0.4	0.0	4.7	3.7	5.3
Jun 27	0	0	0	0	0	0	0	0	0	0	0	0	0	0	0	0	0	33	0.0	0.3	0.6	0.0	3.7	3.5	3.9
Jun 20	0	0	0	0	1	0	2	0	1	0	1	0	0	0	0	5	0	50	0.0	0.4	1.2	0.0	2.7	3.0	2.5
Jun 13	0	0	0	0	0	0	1	0	0	0	1	0	0	0	0	2	0	49	0.0	0.3	0.3	0.0	3.5	4.5	2.5
Jun 6	0	0	0	0	0	0	2	0	1	0	1	0	0	0	0	4	0	115	0.0	0.2	0.2	0.0	3.6	5.7	2.0
May 29	0	0	0	0	0	0	1	0	1	1	0	0	0	0	0	3	0	51	0.0	0.2	0.2	0.0	5.5	6.7	4.3
May 22	0	0	0	0	0	1	2	1	0	0	0	1	0	0	1	6	0	102	0.0	0.3	0.3	0.0	7.0	9.0	4.4
May 15	0	0	0	0	0	0	2	0	0	0	2	1	0	0	1	6	0	168	1.7	0.3	0.3	0.0	8.0	10.0	5.4
May 8	0	0	0	0	0	0	1	0	0	0	0	0	0	0	1	1	0	71	0.0	0.3	0.4	0.0	12.2	17.0	7.0
May 2	0	0	0	0	0	0	0	1	1	0	1	1	0	0	1	5	0	55	0.0	0.3	0.4	0.0	16.0	19.7	9.4

Influenza Positive Tests Reported to CDC by U.S. Clinical Laboratories, National Summary, 2019-2020 Season



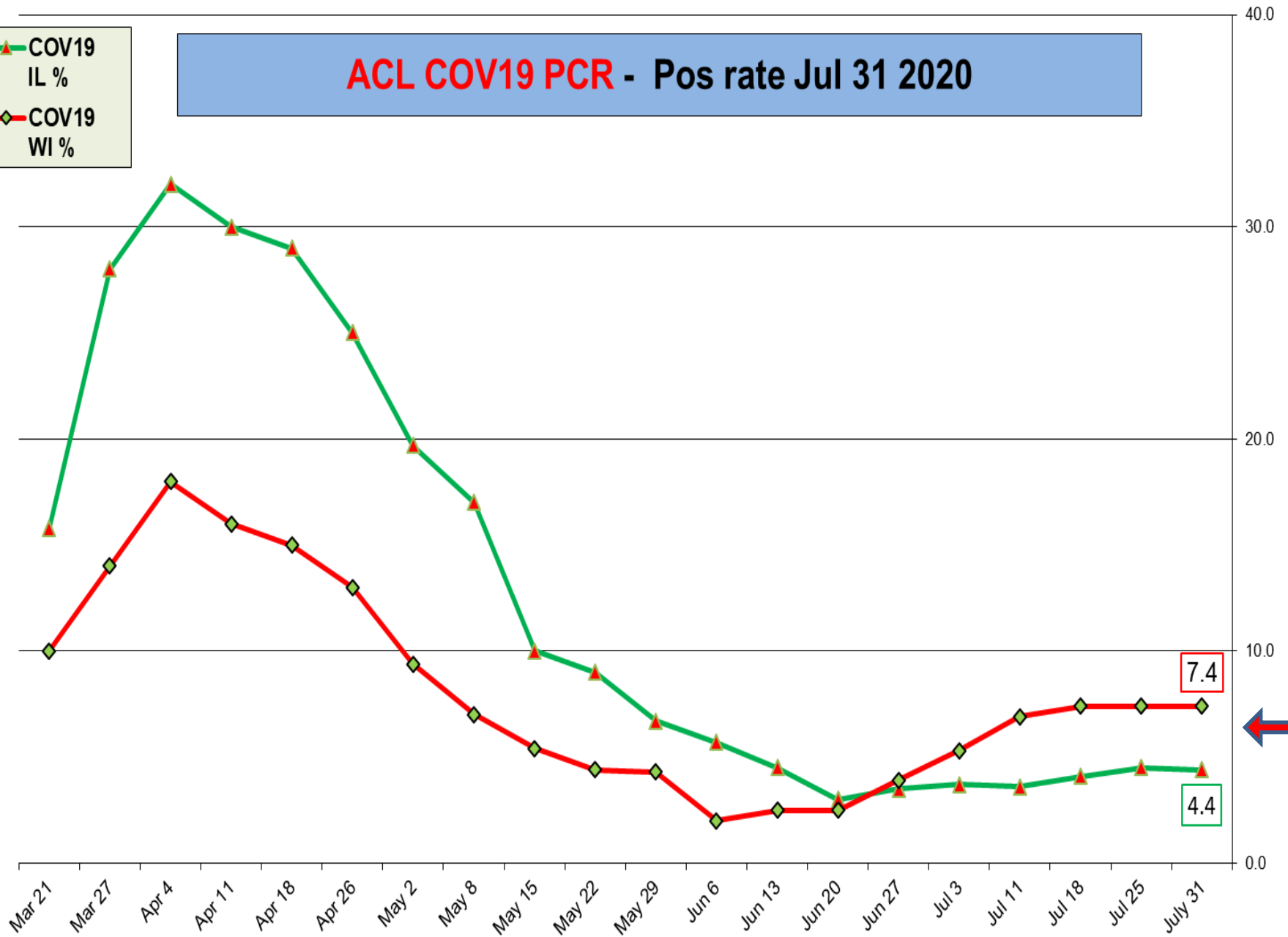
2019-20 Influenza Season Week 31 ending Aug 01, 2020

ILI Activity Level

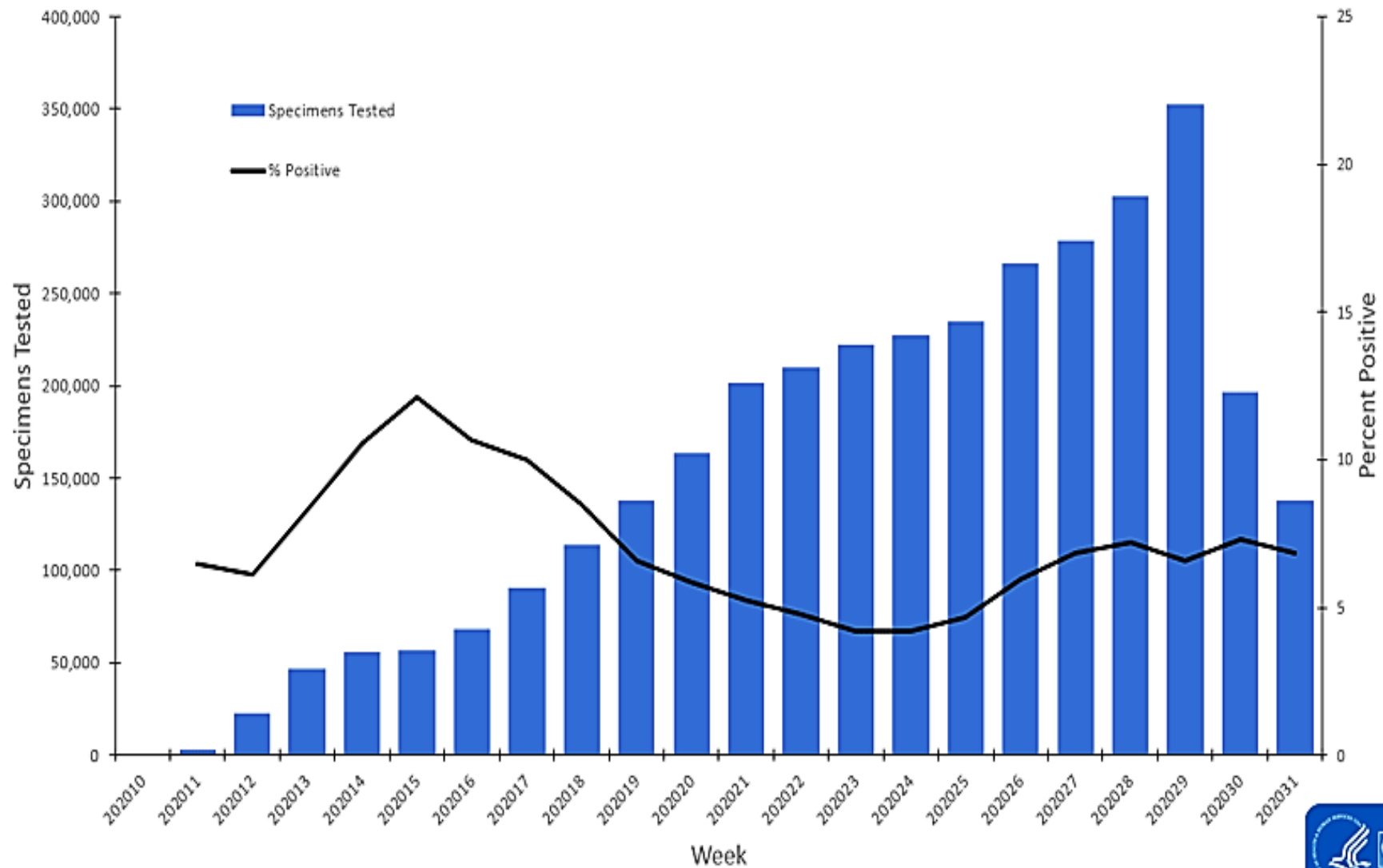


ACL COV19 PCR - Pos rate Jul 31 2020

- COV19 IL %
- COV19 WI %

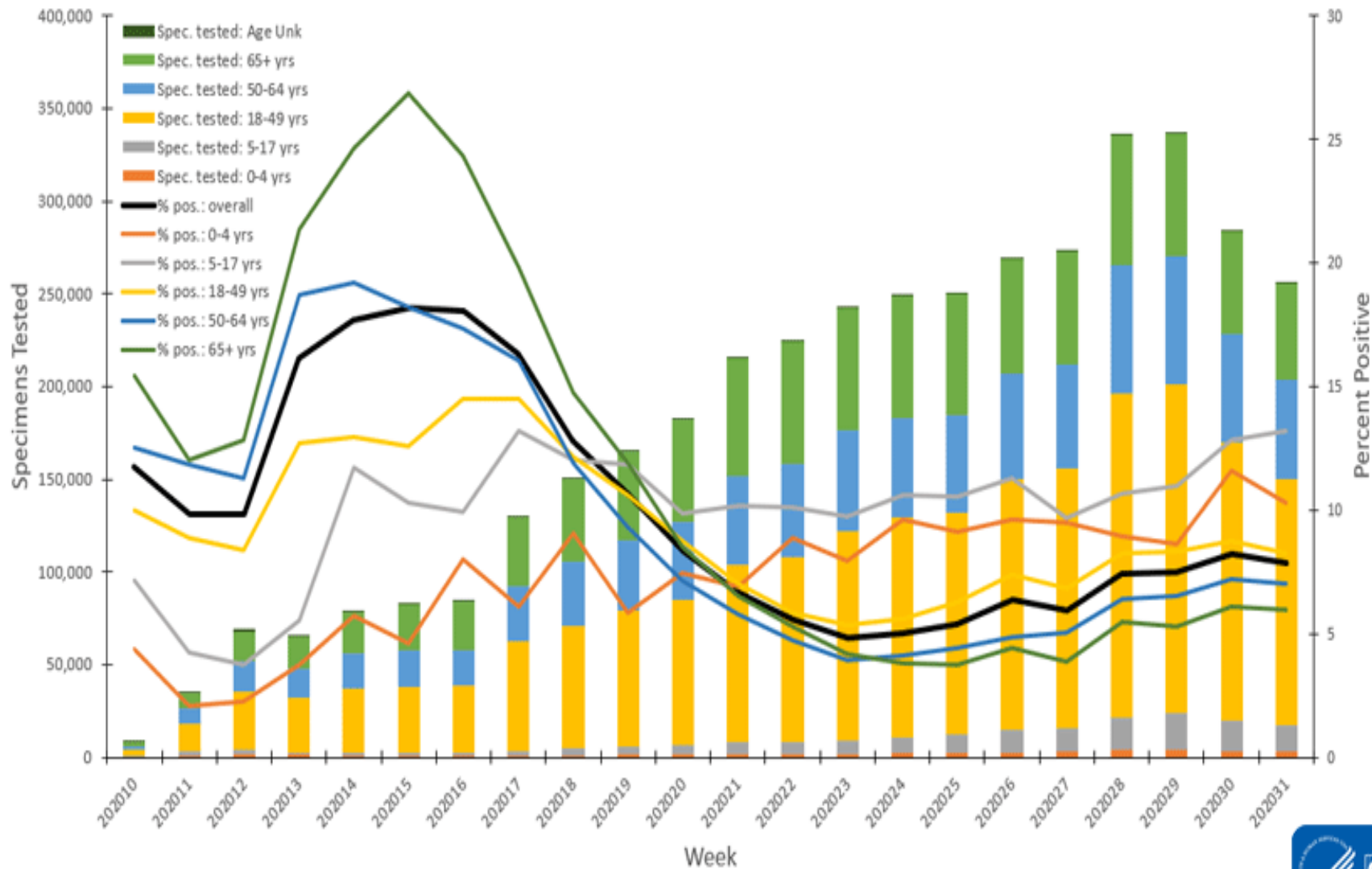


U.S. Clinical Laboratories Reporting to the National Respiratory and Enteric Virus Surveillance System: Number of Specimens Tested and Percent Positive for SARS-CoV-2
March 8, 2020 – August 1, 2020

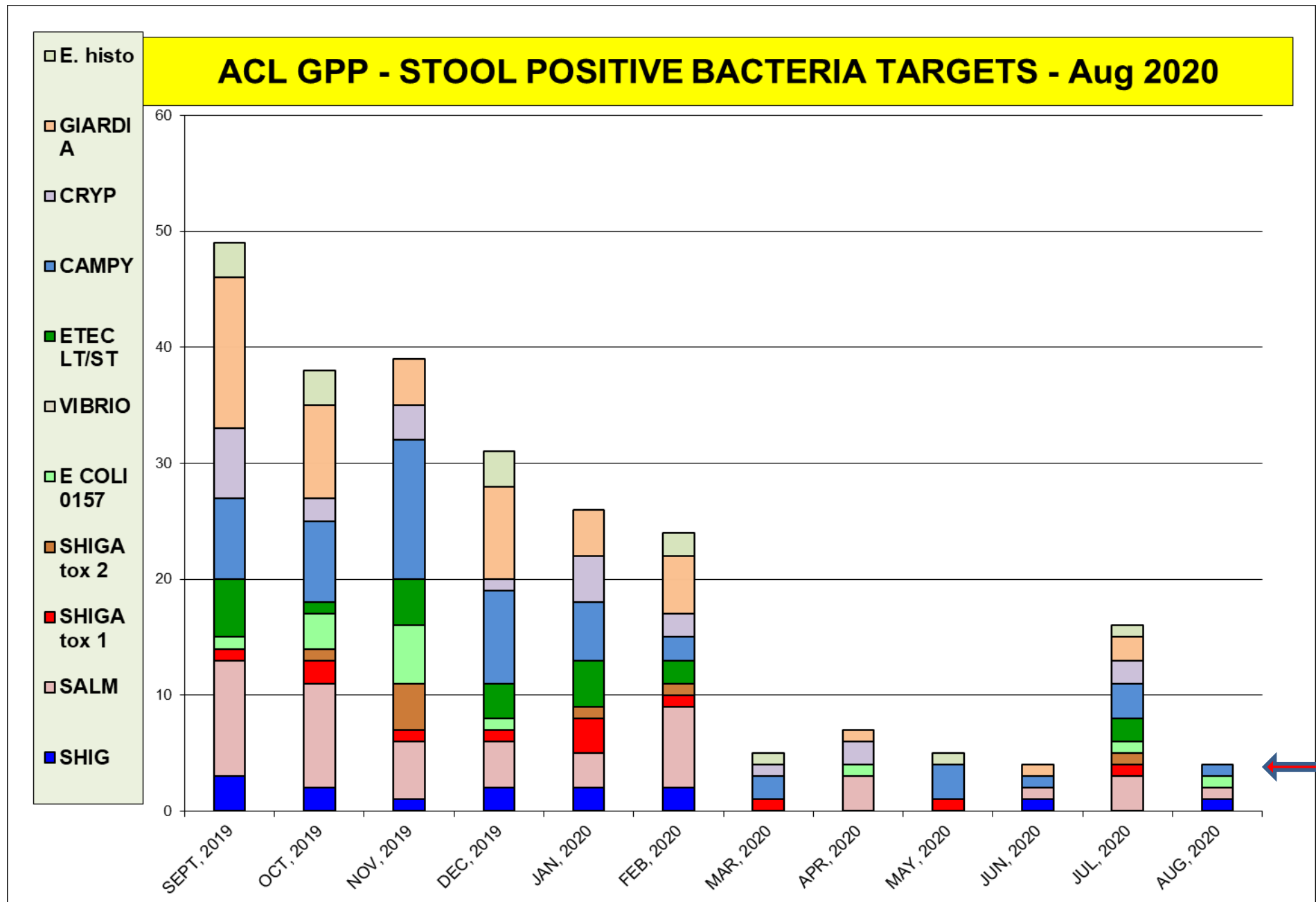


Summary of Laboratory Testing Results Reported to CDC*	Week 31 (July 26 – August 1, 2020)	Cumulative since March 1, 2020
No. of specimens tested	1,951,609	34,990,702
Public Health Laboratories	255,628	4,011,003
Clinical Laboratories	137,916	3,391,898
Commercial Laboratories	1,558,065	27,587,801
No. of positive specimens (%)	151,488 (7.8%)	3,305,091 (9.4%)
Public Health Laboratories	20,026 (7.8%)	332,644 (8.3%)
Clinical Laboratories	9,401 (6.8%)	217,384 (6.4%)
Commercial Laboratories	122,061 (7.8%)	2,755,063 (10.0%)

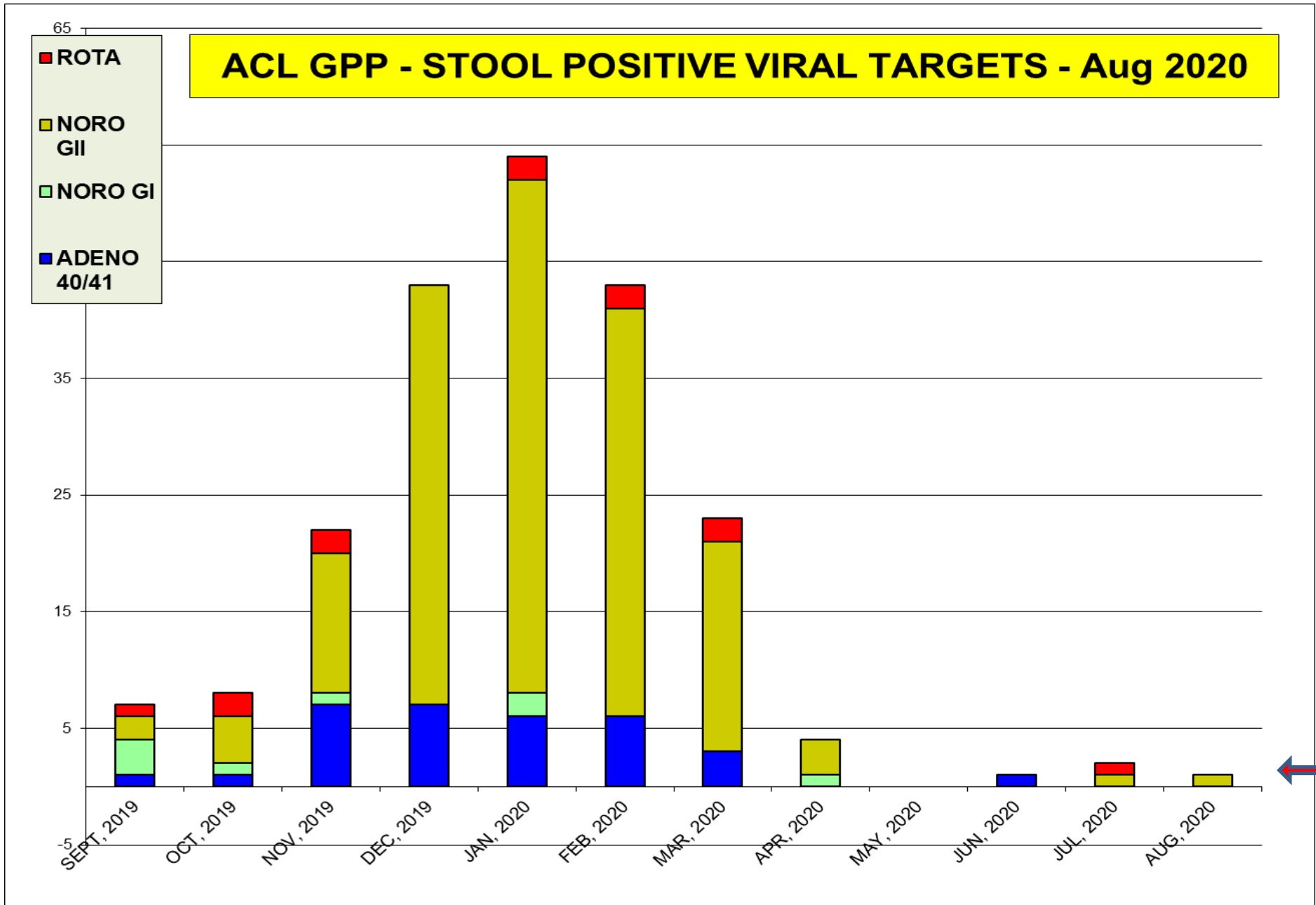
U.S. State and Local Public Health Laboratories Reporting to CDC:
 Number of Specimens Tested and Percent Positive for SARS-CoV-2
 March 1, 2020 – August 1, 2020



The most prevalent bacterial targets in Aug



The most prevalent virus targets in August n/a



Aug positivity rate (%)				
BV	CAN. spp.	C. glab.	T.vag	M. genit
28	9	3.0	0.6	3.0

