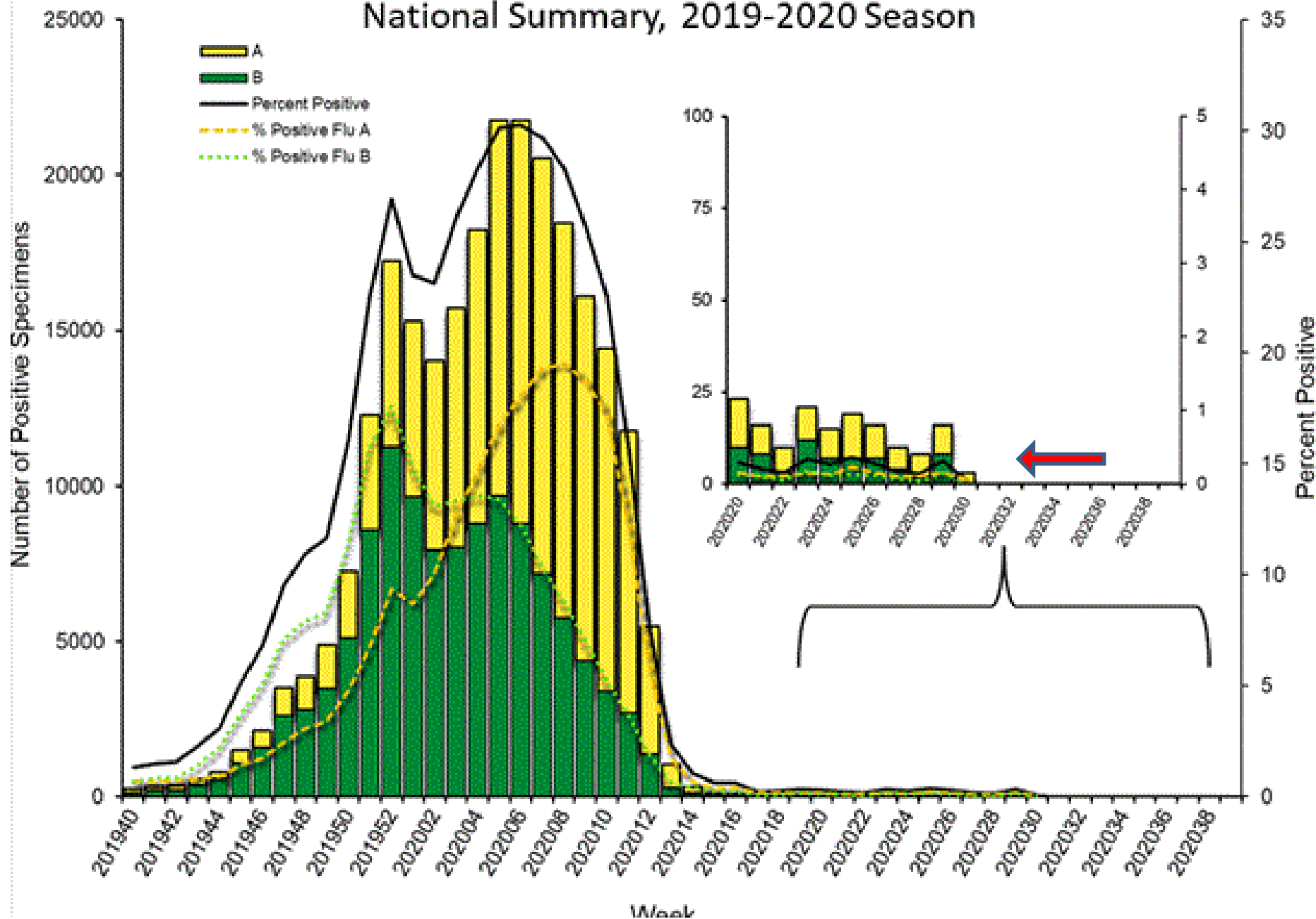


Respiratory Pathogens - 07 25 2020



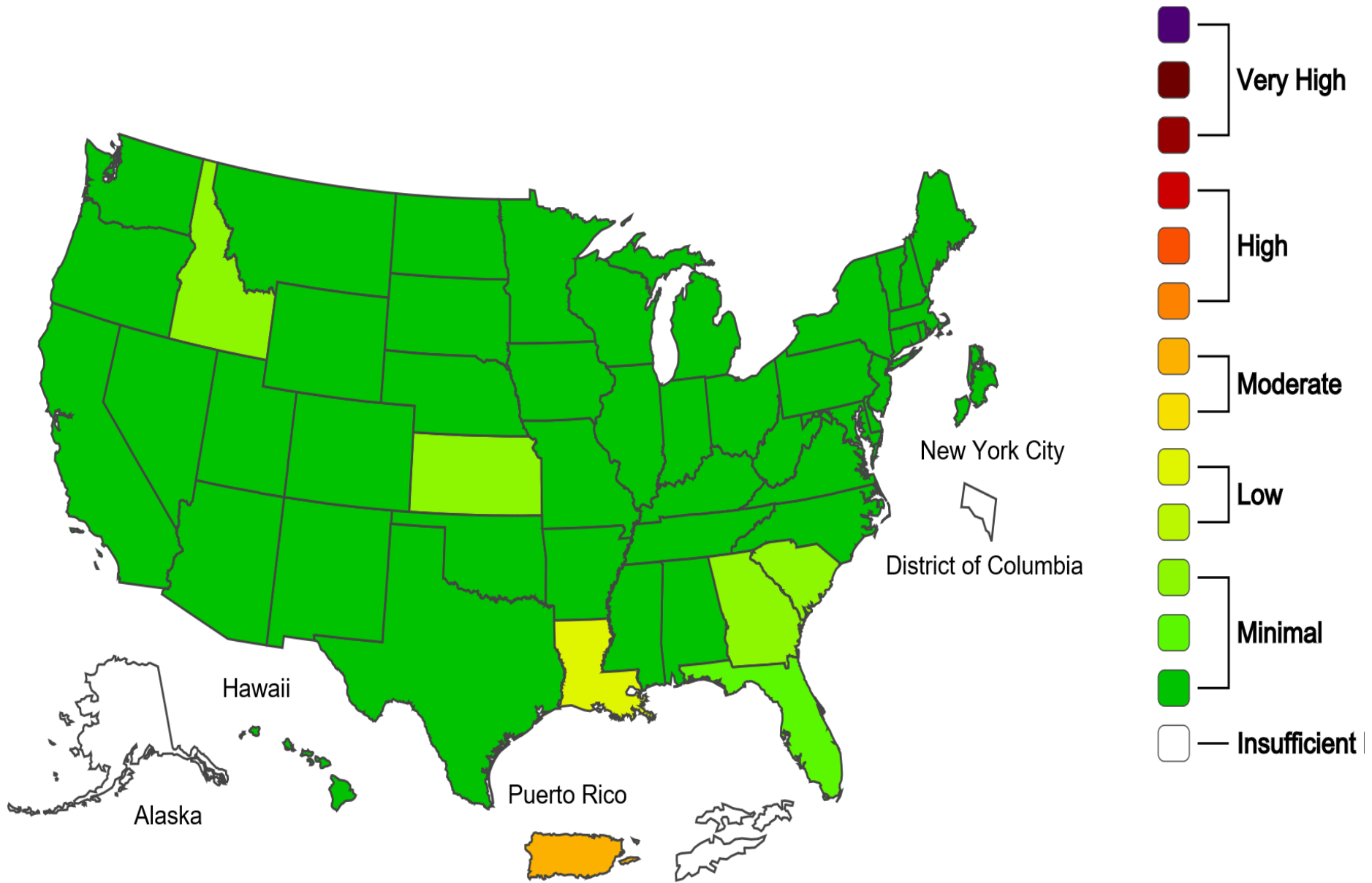
Week	InfA-H1	InfA-H3	2009 H1N1	Inf B	RSV	All Para	EV/ Rhino	Meta pneumo	Adeno	All Corona	Bocca	Myc. pneumo	Chlam. pneumo.	Leg. pneumo.	BP/ BPP	Total Pos	POS FLU	Total	ACL RPPNL	US %FLU	IL/WI PCR	ACL FLUPCR	COVID ACL Total %	COV19 IL %	COV19 WI %
Jul 25	0	0	0	0	0	0	1	0	0	0	0	0	0	0	0	0	0	53	0.0	n/a	n/a	0.0	6.0	4.4	7.3
Jul 18	0	0	0	0	0	0	0	0	0	0	0	0	0	0	0	0	0	36	0.0	0.1	0.5	0.0	6.0	4.1	7.4
Jul 11	0	0	0	0	0	0	0	0	0	0	0	0	0	1	0	1	0	92	0.0	0.3	0.3	0.0	5.3	3.6	6.9
Jul 3	0	0	0	0	0	0	2	0	0	0	1	0	0	0	0	3	0	91	0.0	0.3	0.4	0.0	4.7	3.7	5.3
Jun 27	0	0	0	0	0	0	0	0	0	0	0	0	0	0	0	0	0	33	0.0	0.3	0.6	0.0	3.7	3.5	3.9
Jun 20	0	0	0	0	1	0	2	0	1	0	1	0	0	0	0	5	0	50	0.0	0.4	1.2	0.0	2.7	3.0	2.5
Jun 13	0	0	0	0	0	0	1	0	0	0	1	0	0	0	0	2	0	49	0.0	0.3	0.3	0.0	3.5	4.5	2.5
Jun 6	0	0	0	0	0	0	2	0	1	0	1	0	0	0	0	4	0	115	0.0	0.2	0.2	0.0	3.6	5.7	2.0
May 29	0	0	0	0	0	0	1	0	1	1	0	0	0	0	0	3	0	51	0.0	0.2	0.2	0.0	5.5	6.7	4.3
May 22	0	0	0	0	0	1	2	1	0	0	0	1	0	0	1	6	0	102	0.0	0.3	0.3	0.0	7.0	9.0	4.4
May 15	0	0	0	0	0	0	2	0	0	0	2	1	0	0	1	6	0	168	1.7	0.3	0.3	0.0	8.0	10.0	5.4
May 8	0	0	0	0	0	0	1	0	0	0	0	0	0	0	1	1	0	71	0.0	0.3	0.4	0.0	12.2	17.0	7.0
May 2	0	0	0	0	0	0	0	1	1	0	1	1	0	0	1	5	0	55	0.0	0.3	0.4	0.0	16.0	19.7	9.4
Apr 26	0	0	0	0	0	0	2	0	1	0	0	0	0	0	0	3	0	62	0.0	0.2	0.2	0.0	18.4	25.0	13.0
Apr 18	0	0	0	0	1	1	1	0	0	0	0	0	0	0	0	3	0	34	0.0	0.4	0.6	0.0	22.4	29.0	15.0
Apr 11	0	0	1	0	1	1	5	3	0	1	0	1	1	0	0	14	1	37	1.7	0.4	0.6	0.0	24.9	30.0	16.0

Influenza Positive Tests Reported to CDC by U.S. Clinical Laboratories, National Summary, 2019-2020 Season



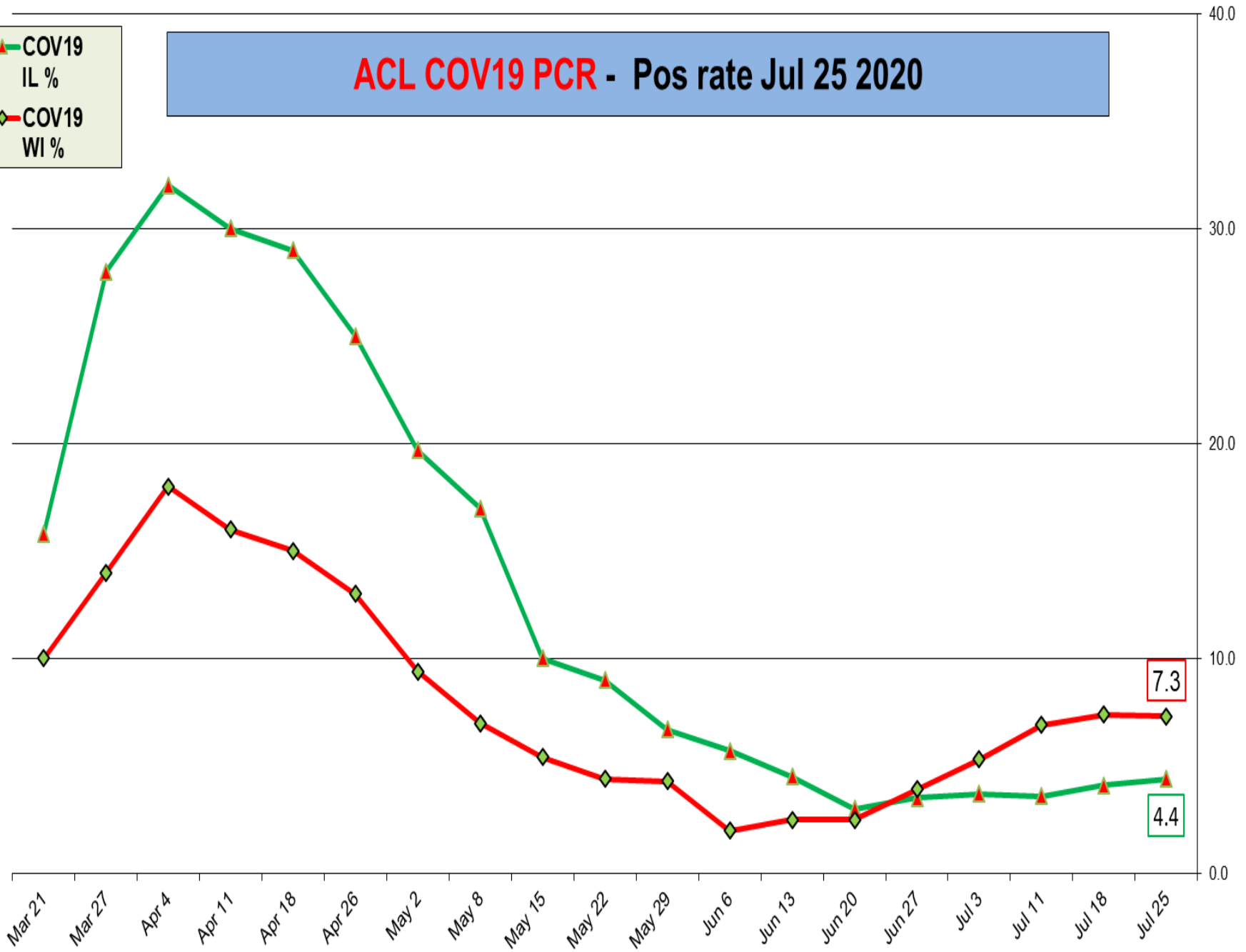
2019-20 Influenza Season Week 30 ending Jul 25, 2020

ILI Activity Level

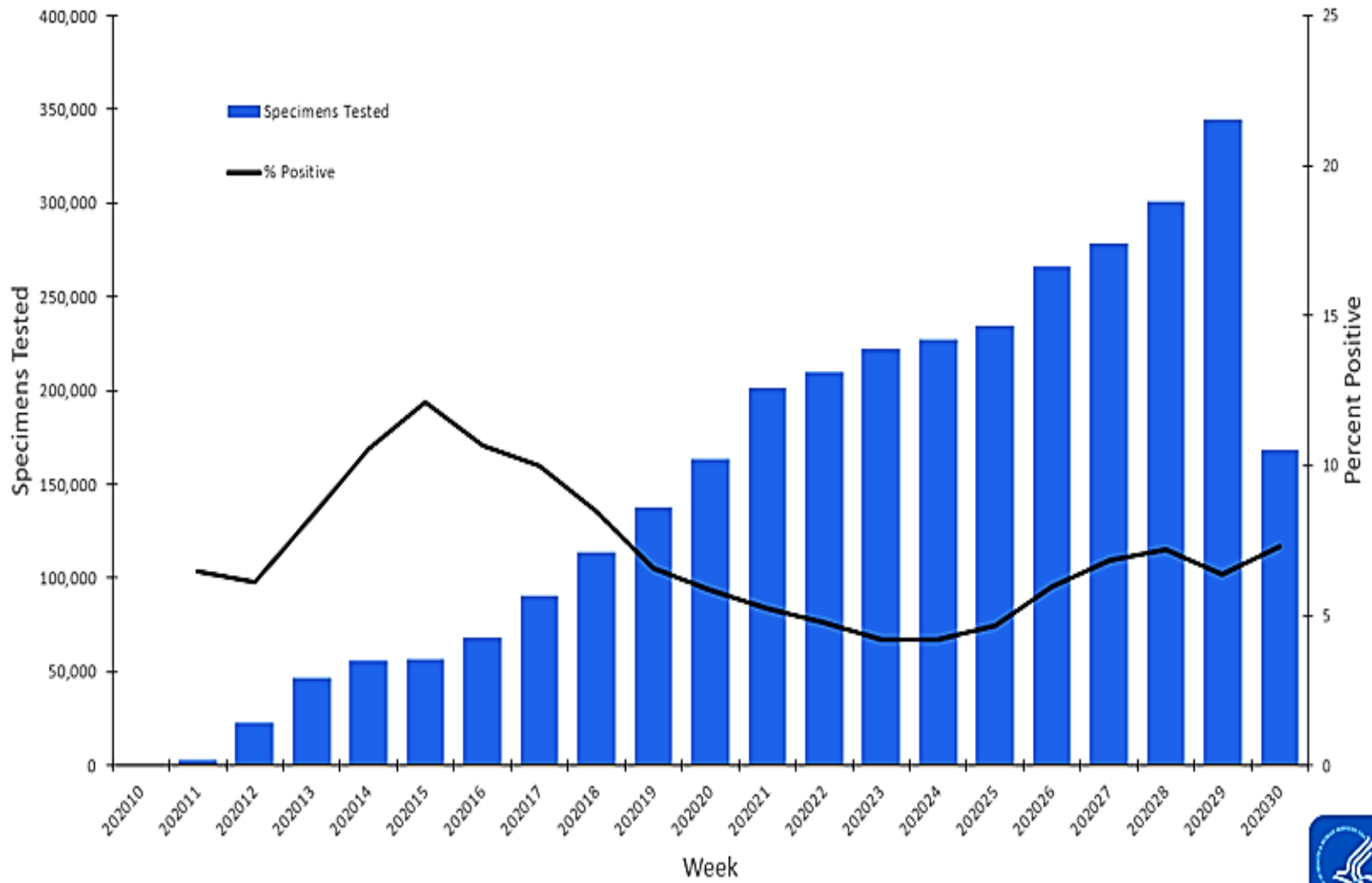


ACL COV19 PCR - Pos rate Jul 25 2020

- COV19 IL %
- COV19 WI %

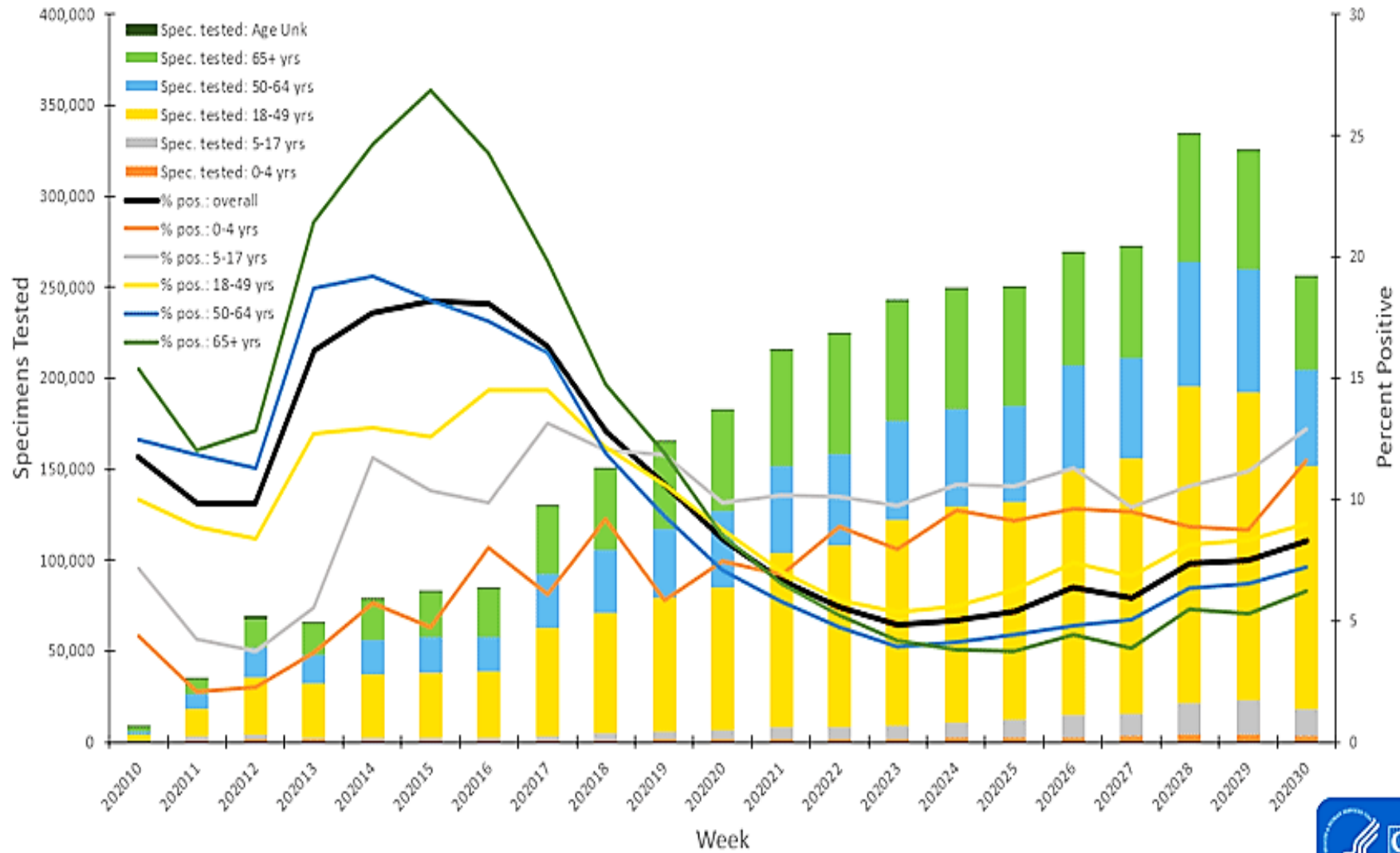


U.S. Clinical Laboratories Reporting to the National Respiratory and Enteric Virus Surveillance System: Number of Specimens Tested and Percent Positive for SARS-CoV-2
March 8, 2020 – July 25, 2020

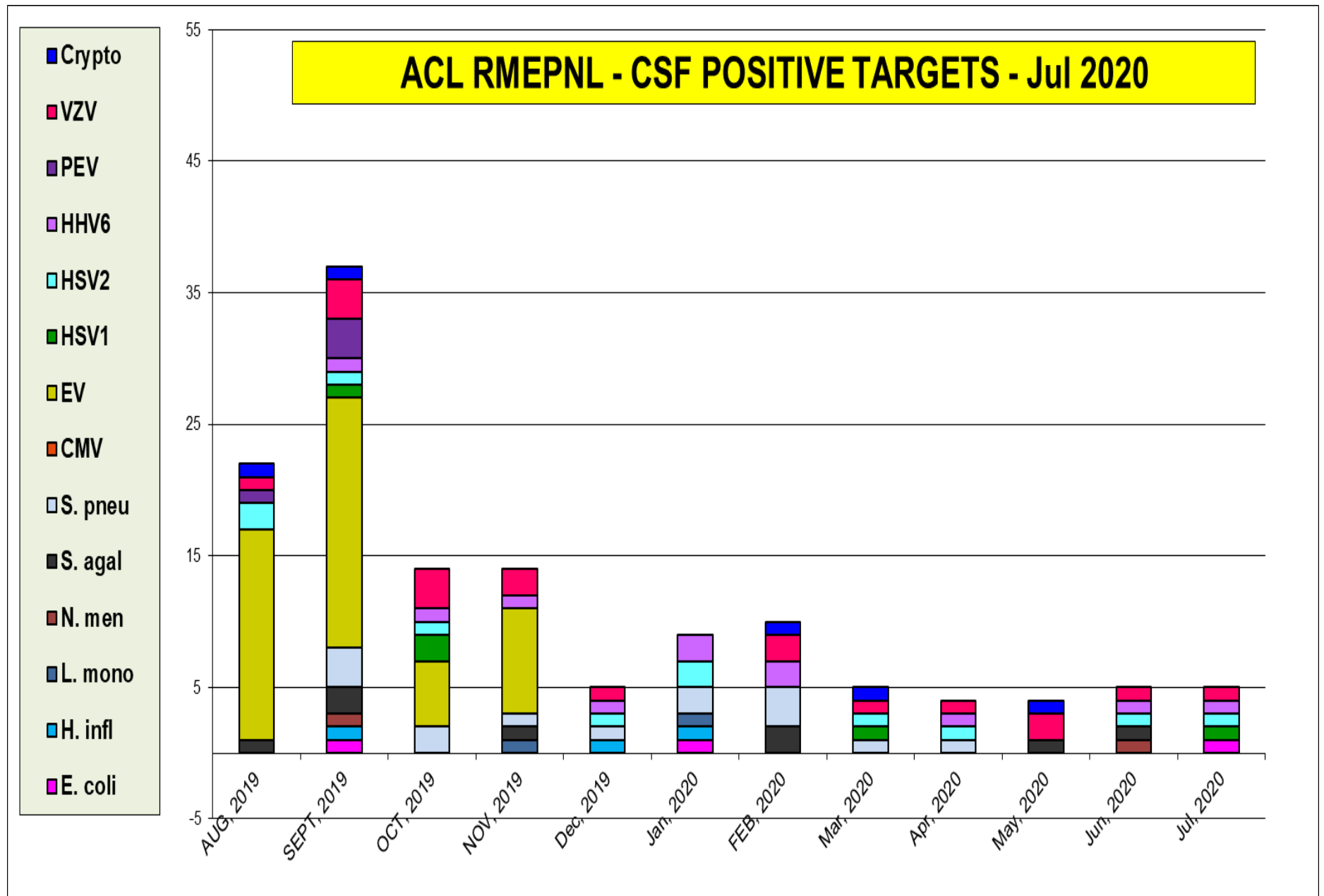


Summary of Laboratory Testing Results Reported to CDC*	Week 30 (July 19 – July 25, 2020)	Cumulative since March 1, 2020
No. of specimens tested	1,906,631	32,009,840
Public Health Laboratories	255,788	3,709,287
Clinical Laboratories	168,924	3,217,358
Commercial Laboratories	1,481,919	25,083,195
No. of positive specimens (%)	165,955 (8.7%)	3,057,280 (9.6%)
Public Health Laboratories	21,264 (8.3%)	309,094 (8.3%)
Clinical Laboratories	12,308 (7.3%)	204,488 (6.4%)
Commercial Laboratories	132,383 (8.9%)	2,543,698 (10.1%)

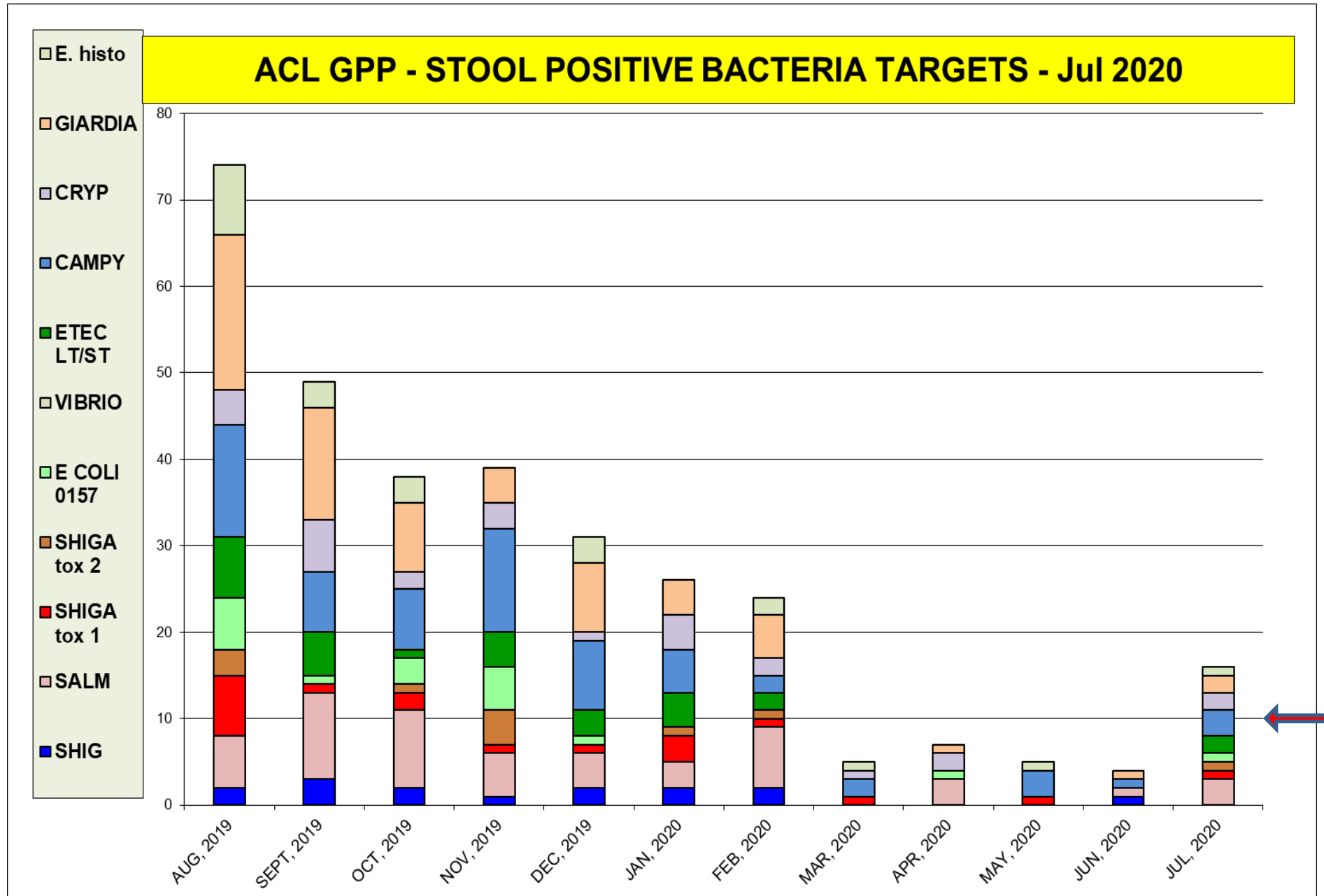
U.S. State and Local Public Health Laboratories Reporting to CDC:
 Number of Specimens Tested and Percent Positive for SARS-CoV-2
 March 1, 2020 – July 25, 2020



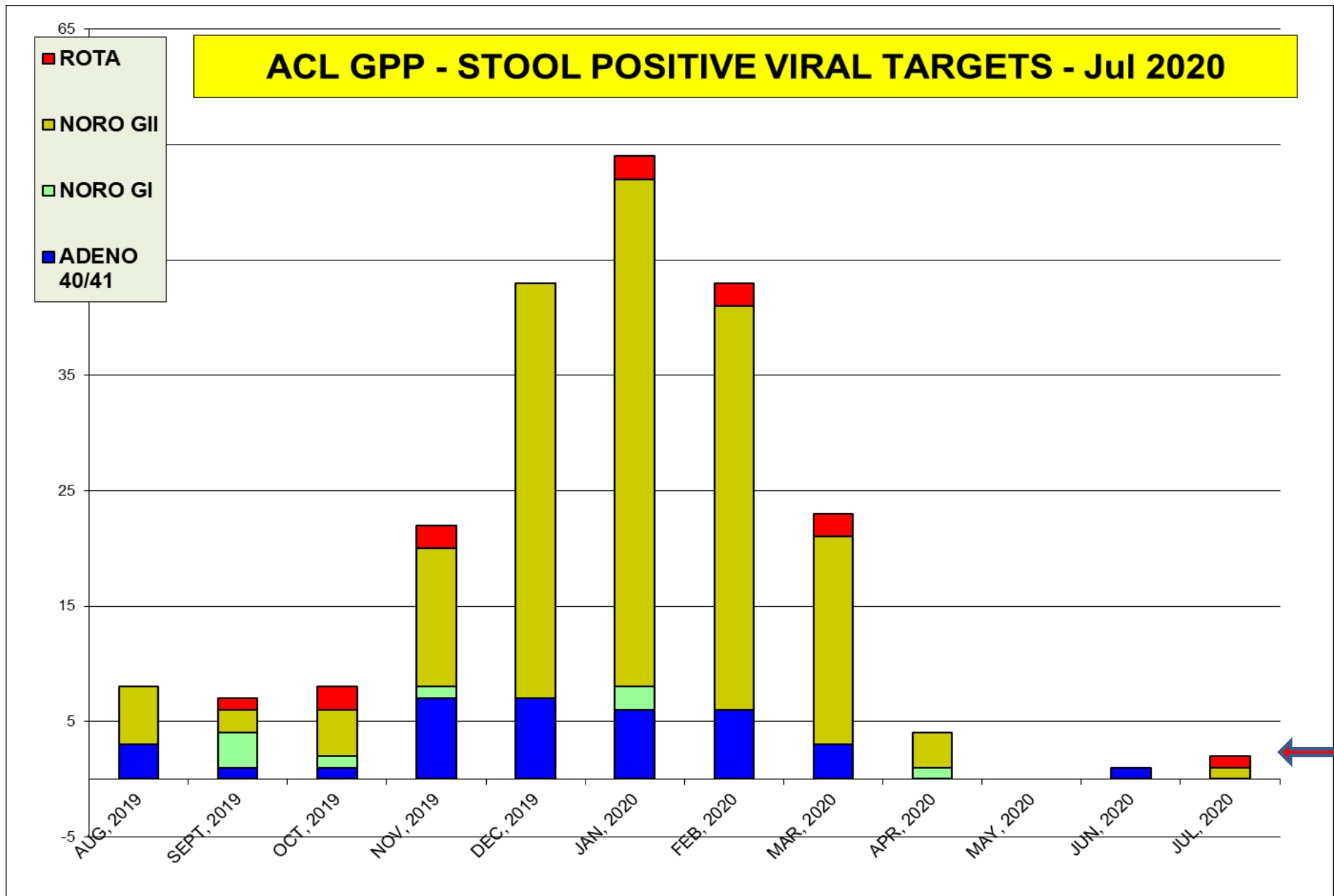
The most prevalent target -all CSF viruses pos rate is 10 %



The most prevalent bacterial target in Jul (Campylobacter)



The most prevalent virus targets in Jul is **Adenovirus**



Jul positivity rate (%)				
BV	CAN. spp.	C. glab.	T.vag	M. genit
35	25	2.1	3.5	1.1

