

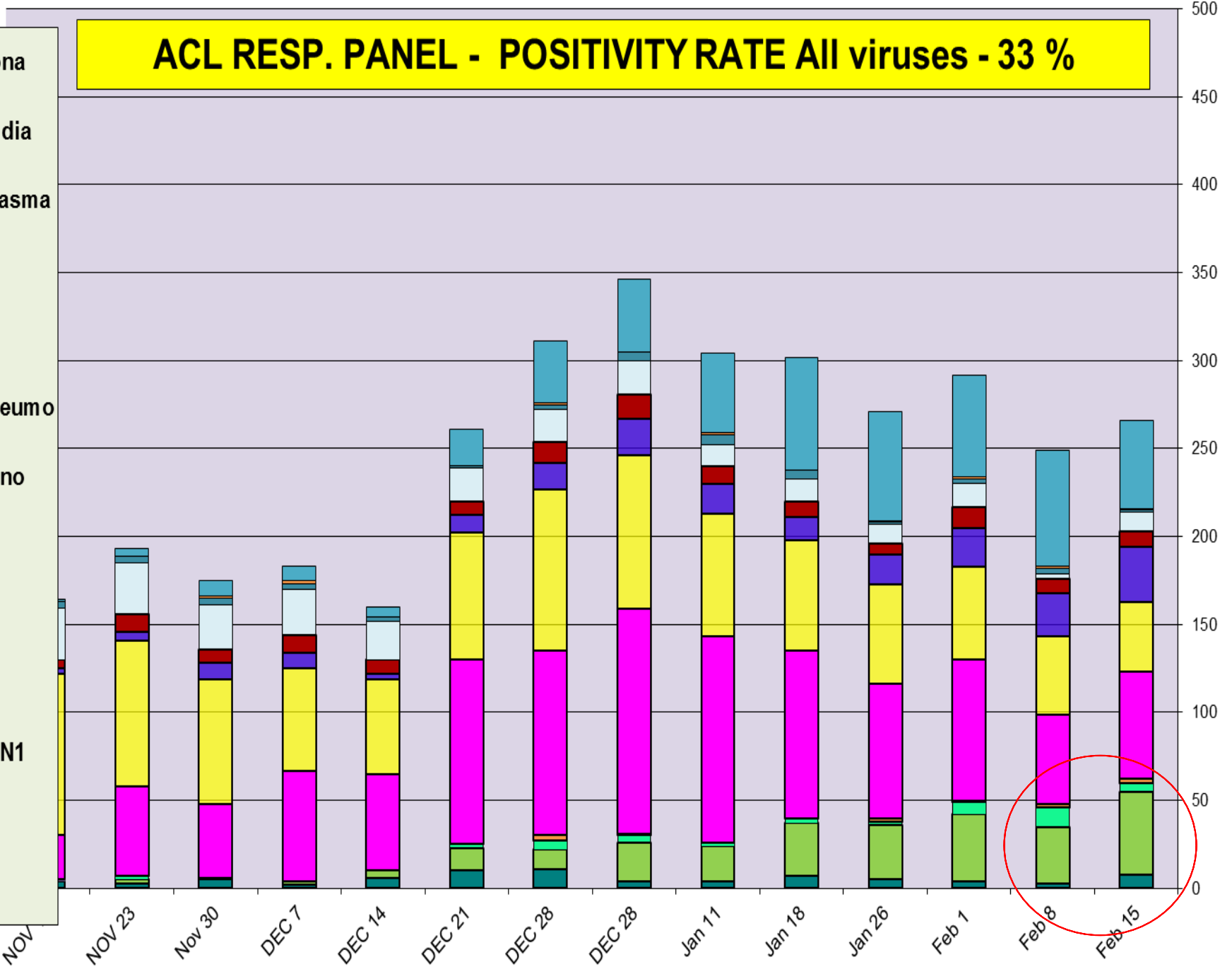
## Respiratory Pathogens Nov 16 2018 - Feb 15 2019

Week Beginning	InfA-H1	InfA-H3	2009 H1N1	Inf B	RSV	All Para	EV/ Rhino	Meta pneumo	Adeno	All Corona	Bocca	Mycoplasma	Chlamydia	Total Pos	POS FLU	Total	ACL %FLU	US %FLU	IL/WI PCR	Sofia EIA
Feb 15	0	5	47	2	61	11	40	31	9	50	8	1	1	266	54	807	6.7	n/a	n/a	20.7
Feb 8	0	11	32	2	51	3	44	25	8	66	3	3	1	249	45	767	5.9	24.6	19.3	18.4
Feb 1	0	7	38	1	80	13	53	22	12	58	4	3	1	292	46	751	6.1	21.6	11.1	11.1
Jan 26	0	2	31	2	76	11	57	17	6	62	5	1	1	271	35	947	3.7	19.2	11.1	11.1
Jan 18	0	3	30	0	95	13	63	13	9	64	7	5	0	302	33	1064	3.1	15.7	13.3	16.6
Jan 11	0	2	20	0	117	12	70	17	10	45	4	6	1	304	22	1026	2.1	12.7	11.6	10.6
DEC 28	0	4	22	1	128	19	87	21	14	41	4	5	0	346	27	812	3.3	12.7	11.8	9.6
DEC 28	0	5	11	3	105	18	92	15	12	35	11	3	1	311	19	783	2.4	13.7	9.0	3.7
DEC 21	0	2	13	0	105	19	72	10	8	21	10	1	0	261	15	766	2.0	15.6	6.9	7.2
DEC 14	0	0	4	0	55	22	54	3	8	6	6	2	0	160	4	891	0.4	11.0	4.1	5.1
DEC 7	0	0	2	0	63	26	58	9	10	8	2	3	2	183	2	785	0.3	3.6	1.8	3.6
Nov 30	0	0	1	0	42	25	71	9	8	9	5	4	1	175	1	641	0.6	4.2	1.9	1.9
NOV 23	0	2	2	0	51	29	83	5	10	4	3	4	0	193	4	566	0.7	2.4	1.6	2.7
NOV 16	1	0	0	0	25	29	92	3	5	1	4	4	0	164	1	457	0.2	1.7	1.5	0.7

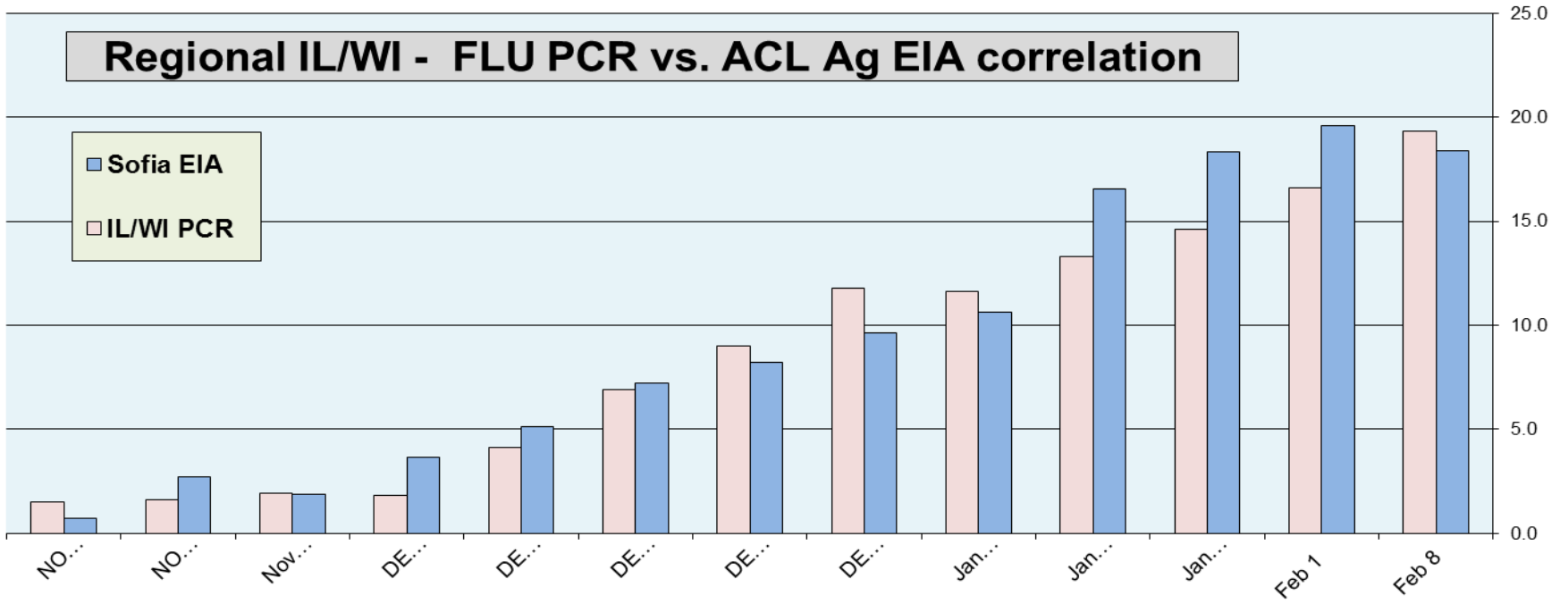
Flu PCR  
% Rate

# ACL RESP. PANEL - POSITIVITY RATE All viruses - 33 %

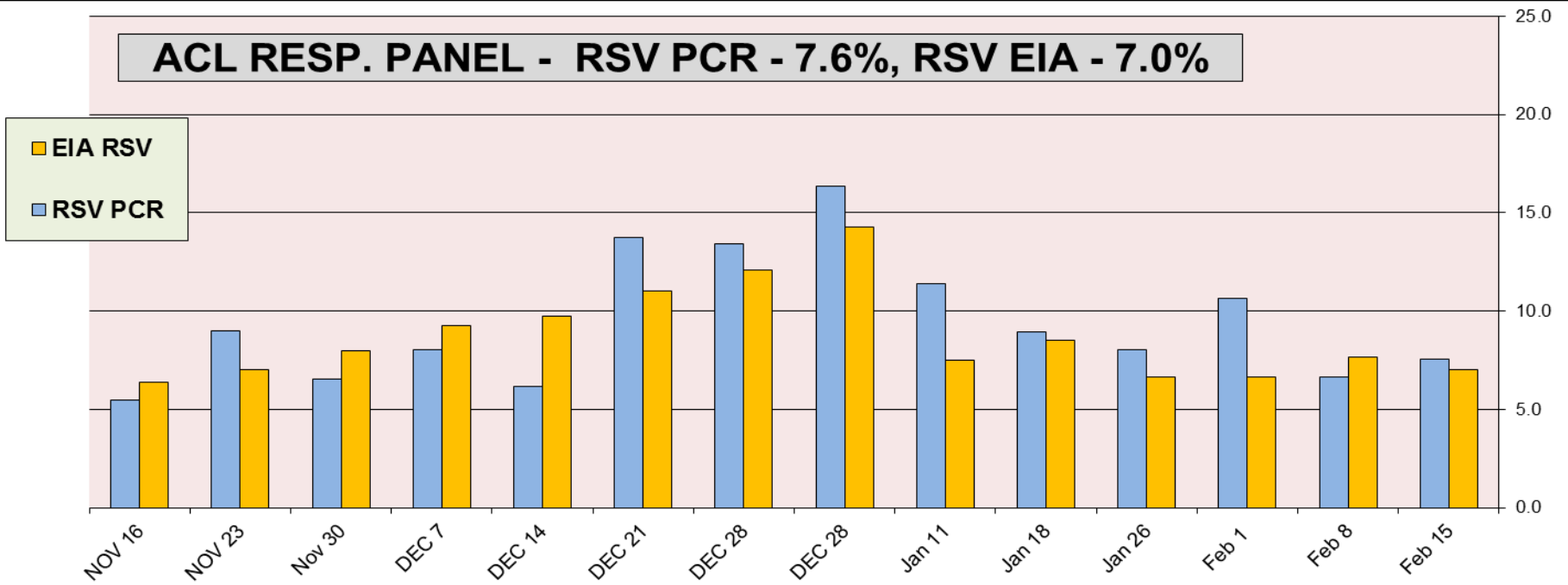
- All Corona
- Chla mydia
- Myco plasma
- All Para
- Adeno
- Meta pneumo
- EV / Rhino
- RSV
- Inf B
- InfA-H3
- 2009 H1N1
- InfA-H1
- Bocca



### Regional IL/WI - FLU PCR vs. ACL Ag EIA correlation



### ACL RESP. PANEL - RSV PCR - 7.6%, RSV EIA - 7.0%



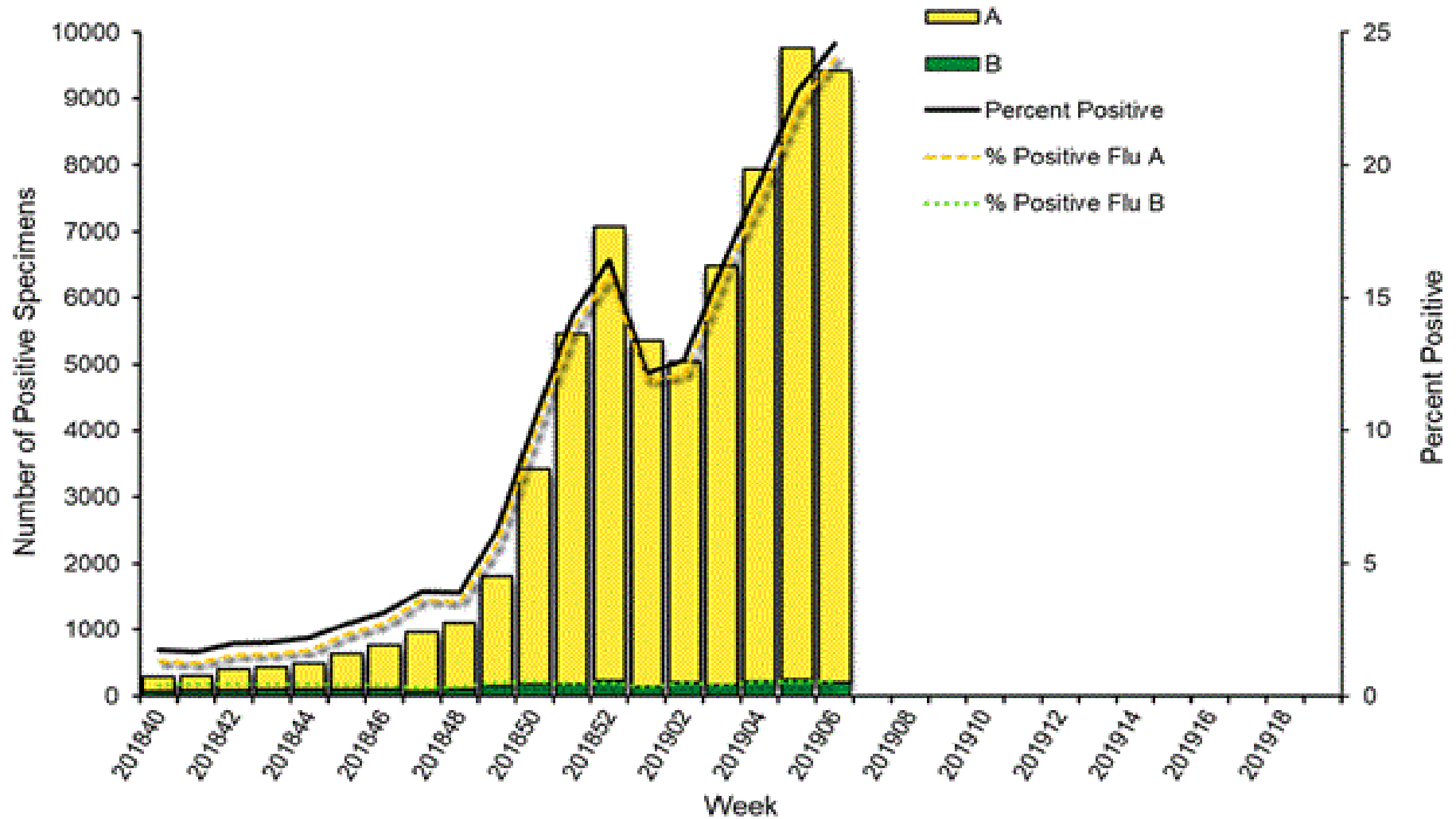
## Correlation between RPPNL (FLU PCR) and Sofia (FLUAG) - Accuracy 96.2%

In the last two months 1986 samples were tested by both methods most of them negative, 63/131 samples were positive by EIA when confirmed by PCR. 63 negative EIA samples were tested positive by PCR method. (ACL correlation data is compiled on samples collected within <48 h). Since positive rate is under-represented and provides correlation on very small fraction of positive samples – interpret clinical sensitivity with caution.

Dec 1 2018 to Feb 15 2019				
FLUAG (Sofia) vs RPPNL (PCR) correlation				
		RPPNL		
		+	-	Total
FluAG	+	68	13	81
	-	63	1842	1905
		Total		1986
%				
51.9	Clinical Sensitivity			
99.3	Clinical Specificity			
84.0	Positive Predictive Value (PPV)			
96.7	Negative Predictive Value (NPV)			
96.2	Accuracy			

Feb 9, 2019 Positivity rate 24.6% - Flu A – 98% , Flu B – 2%

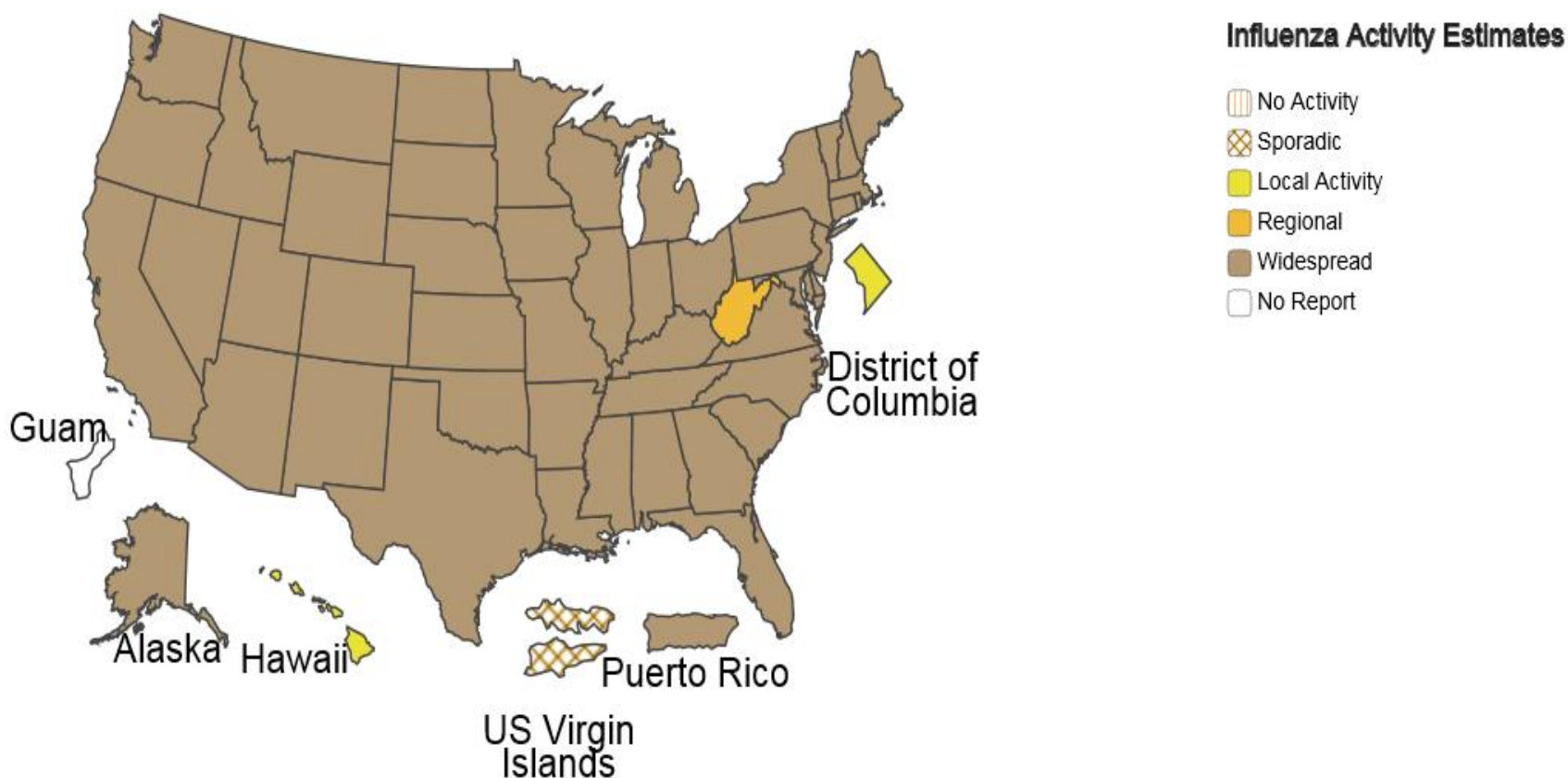
### Influenza Positive Tests Reported to CDC by U.S. Clinical Laboratories, National Summary, 2018-2019 Season



## A Weekly Influenza Surveillance Report Prepared by the Influenza Division

Weekly Influenza Activity Estimates Reported by State and Territorial Epidemiologists\*

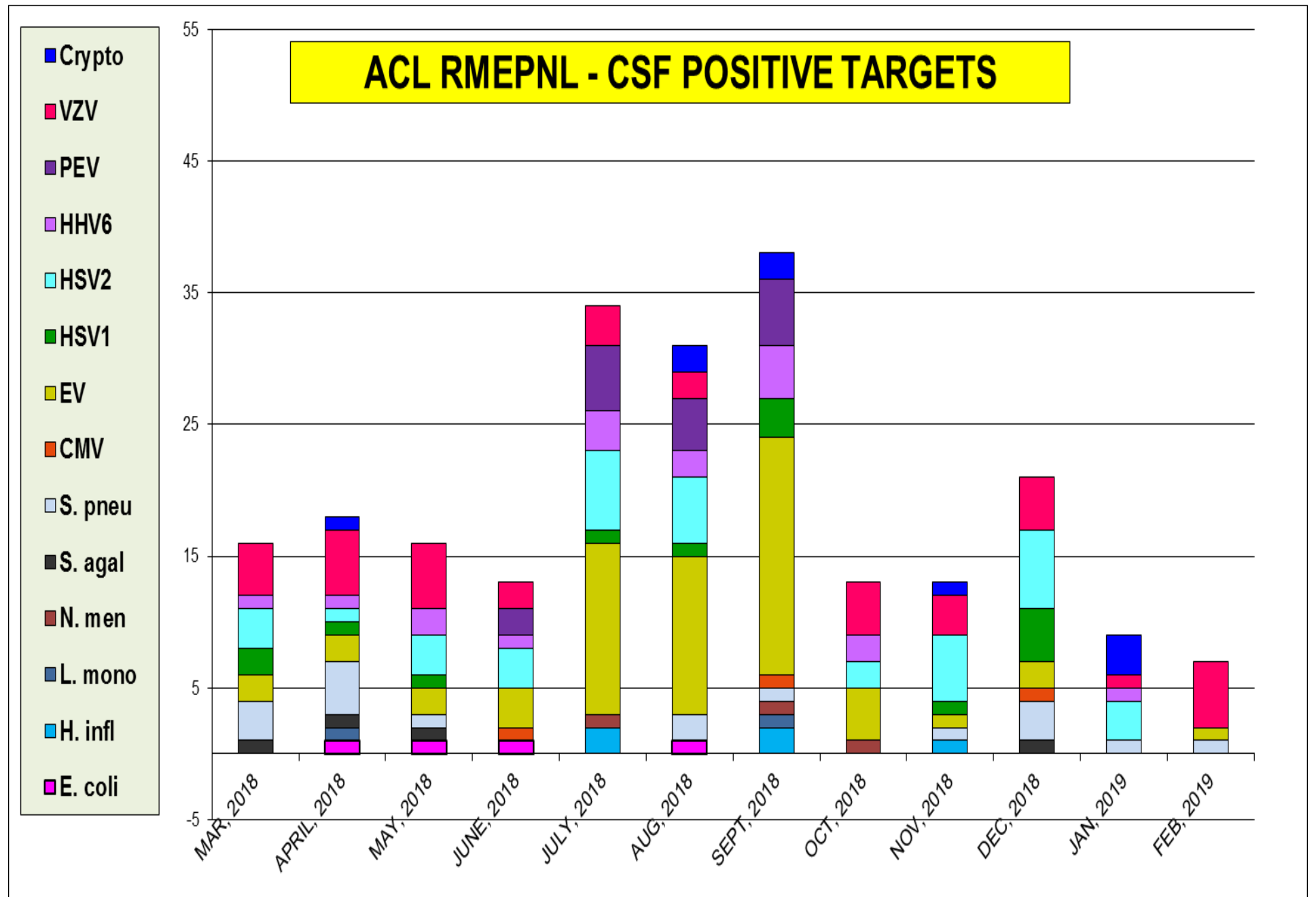
Week Ending Feb 09, 2019 - Week 6



\*This map indicates geographic spread and does not measure the severity of influenza activity.



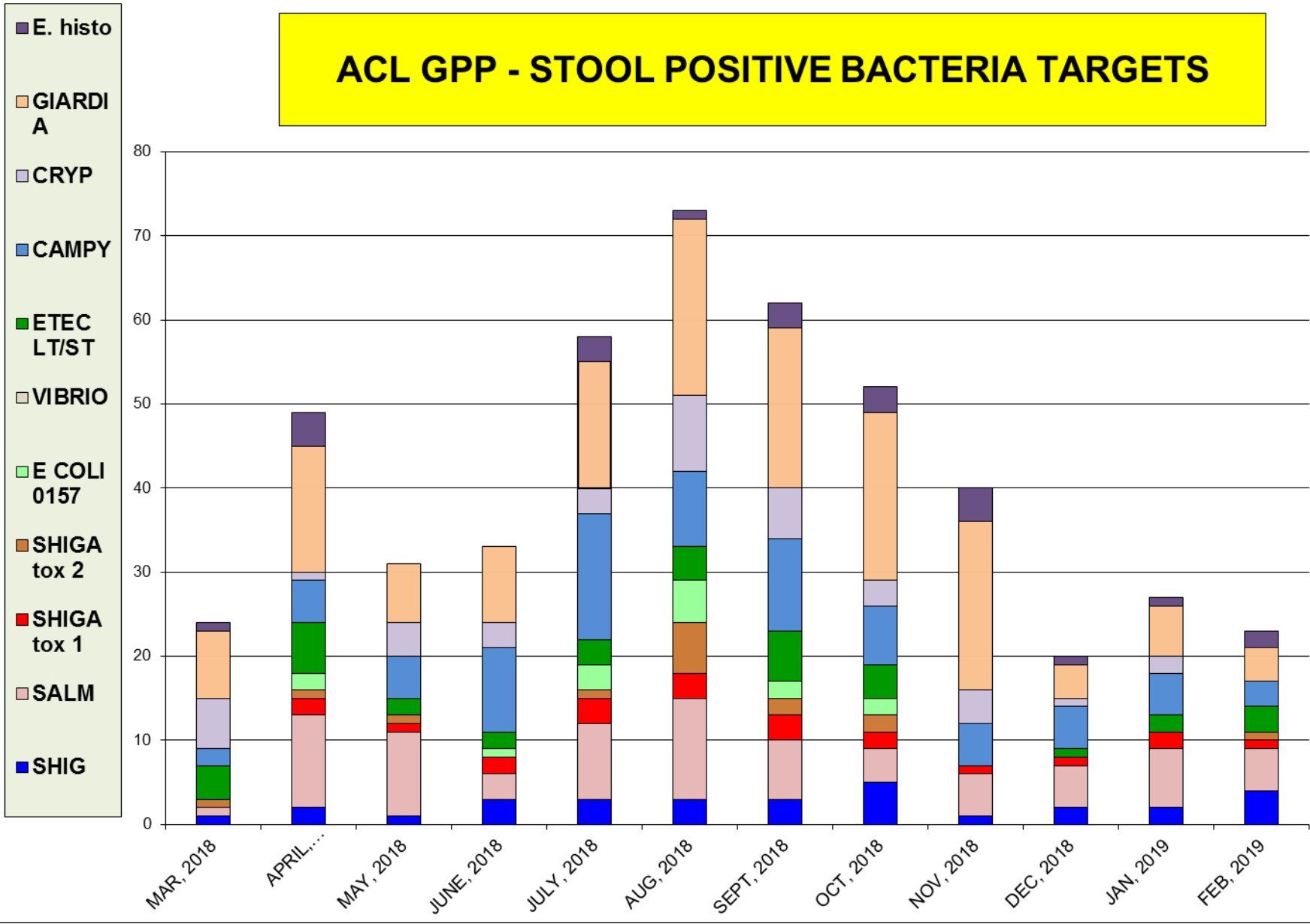
The most prevalent target was VZV– total pos. rate 6.0%



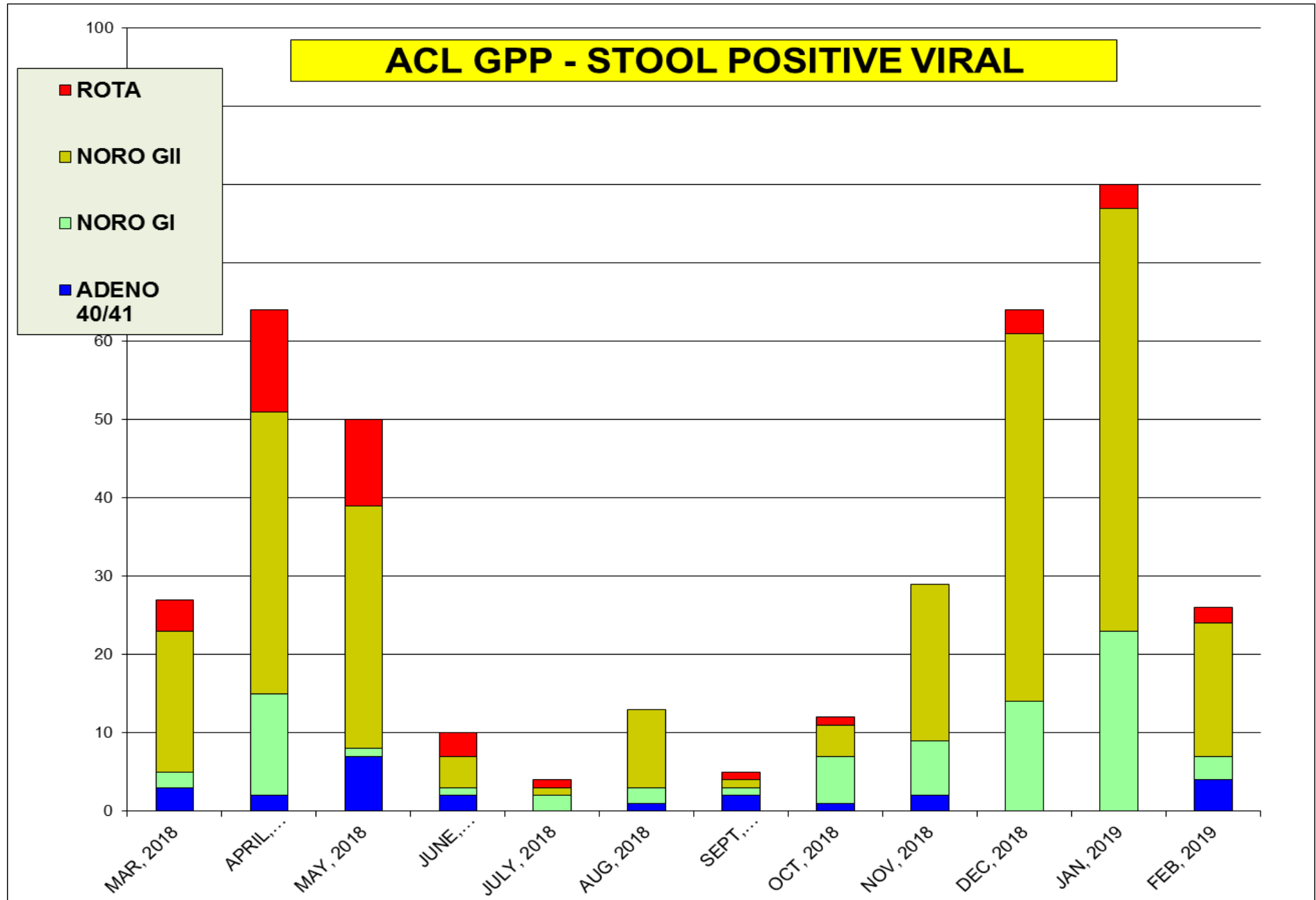


The most prevalent bacterial targets was **Salmonella** and **Giardia**

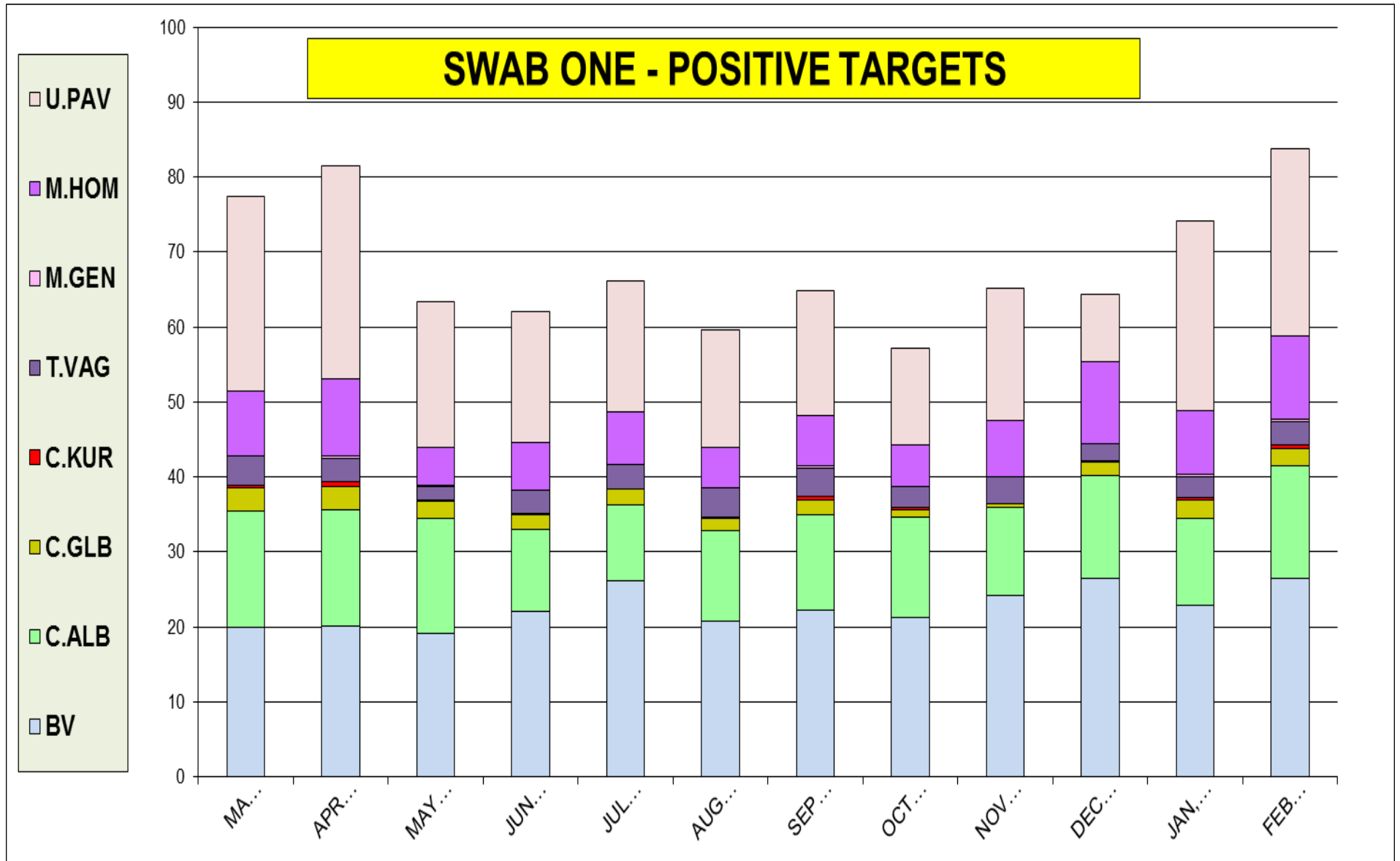
### ACL GPP - STOOL POSITIVE BACTERIA TARGETS



The most prevalent virus target was **Norovirus type I / II** – 7% pos. rate



BV	C.ALB	C.GLB	C.KUR	T.VAG	M.GEN	M.HOM	U.PAV	Tot. pos.
4,754	4,754	4,754	4,754	4,754	4,754	4,754	4,754	4,754
<b>22.8</b>	<b>12.9</b>	<b>2.0</b>	<b>0.3</b>	<b>3.1</b>	<b>0.1</b>	<b>7.7</b>	<b>18.9</b>	<b>67.8</b>



## Neuraminidase Inhibitors Resistance in samples collected – as of Feb 9, 2019

Per CDC website	Oseltamivir		Peramivir		Zanamivir	
	Virus Samples tested (n)	Resistant Viruses, (%)	Virus Samples tested (n)	Resistant Viruses, (%)	Virus Samples tested (n)	Resistant Viruses, (%)
Influenza A (H1N1)pdm09	<b>481</b>	<b>0.4</b>	<b>481</b>	<b>0.4</b>	<b>481</b>	<b>0</b>
Influenza A (H3N2)	<b>254</b>	<b>0</b>	<b>254</b>	<b>0</b>	<b>254</b>	<b>0</b>
Influenza B	<b>88</b>	<b>0</b>	<b>88</b>	<b>0</b>	<b>88</b>	<b>0</b>

***There is 0.4% resistance detected.***