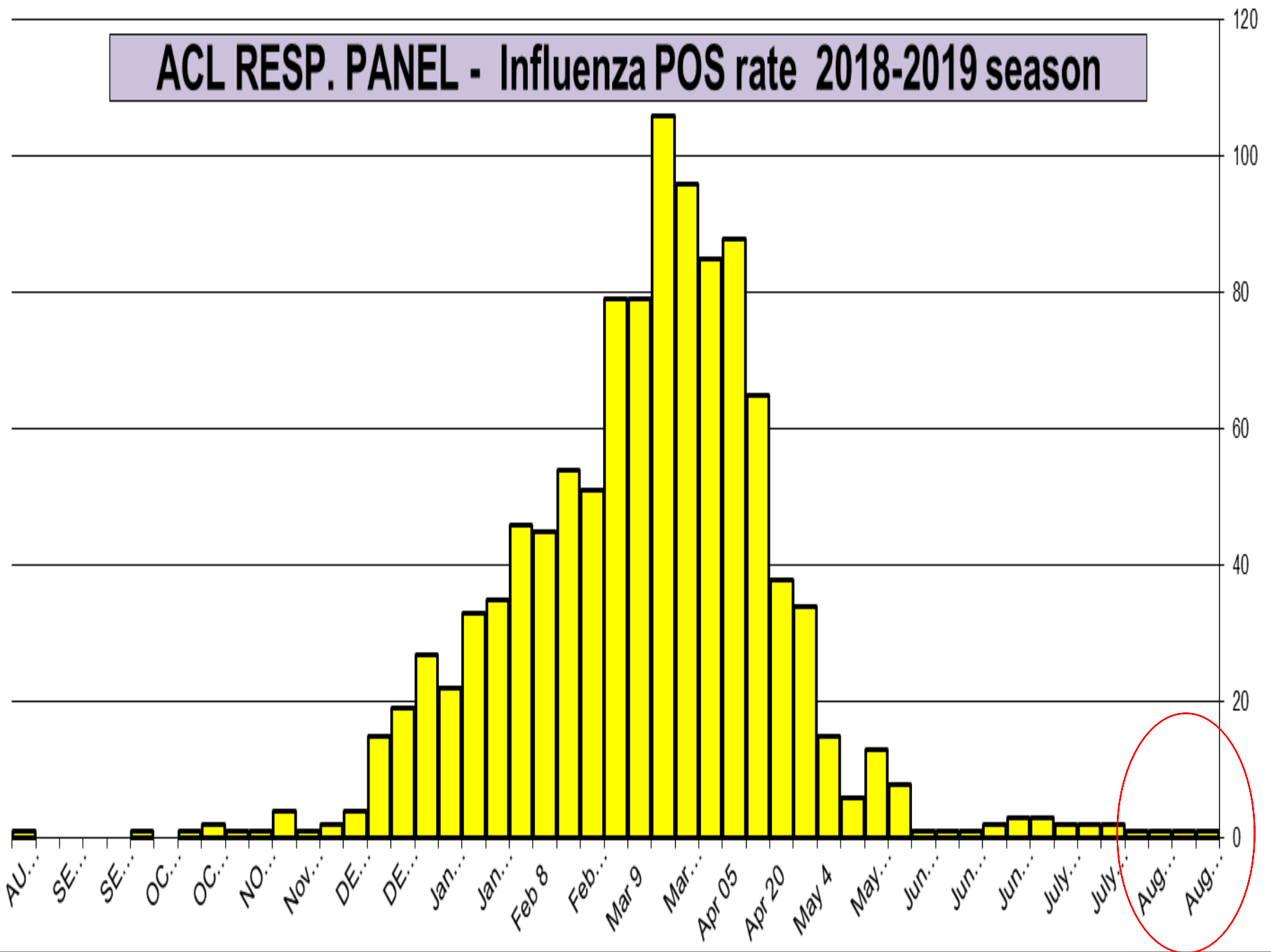


Respiratory Pathogens - Aug 24 2019

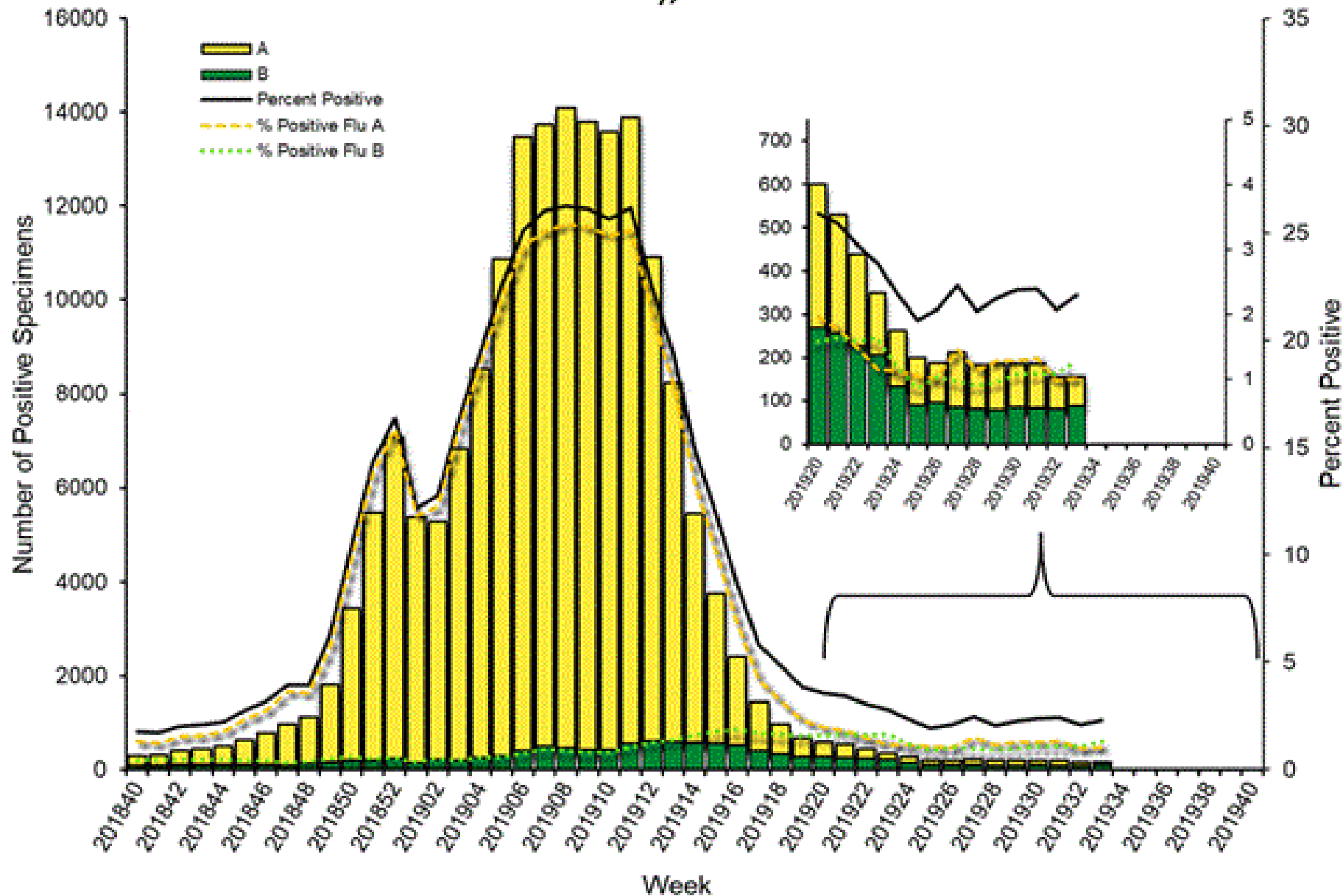
Week	InfA-H1	InfA-H3	2009 H1N1	Inf B	RSV	All Para	EV / Rhino	Meta pneumo	Adeno	All Corona	Bocca	Myco plasma	Chla mydia	Total Pos	POS FLU	Total	ACL %FLU	US %FLU	IL/WI PCR	AAH PCR
August 23	0	1	0	0	1	8	42	1	2	6	3	2	5	71	1	393	0.3	n/a	n/a	0.0
Aug 16	0	0	1	0	1	5	31	4	5	1	1	0	1	50	1	655	0.2	2.3	0.2	0.0
Aug 09	0	1	0	0	0	5	29	1	5	2	0	0	1	44	1	629	0.2	2.1	0.2	0.0
AUG 2	0	1	0	0	2	10	46	4	6	0	1	0	0	70	1	758	0.1	2.4	0.9	0.0
July 26	0	2	0	0	1	6	36	10	1	1	2	3	0	62	2	504	0.4	2.4	0.4	3.7
July 19	0	2	0	0	0	18	38	9	8	2	3	0	1	81	2	491	0.4	2.3	1.0	5.6
July 12	0	2	0	0	1	12	39	6	7	0	2	2	0	71	2	567	0.4	2.1	0.3	3.2
July 5	0	0	0	0	0	19	41	9	5	4	1	4	0	83	3	387	0.8	2.5	1.4	3.0
June 29	0	1	1	1	1	26	54	17	9	0	1	1	0	112	3	694	0.4	2.1	1.5	3.1
June 21	0	0	2	0	0	25	61	23	10	4	3	1	0	129	2	718	0.3	1.9	0.9	2.2
June 14	0	1	0	0	2	33	59	26	5	0	6	0	0	132	1	754	0.1	2.4	1.6	2.6
June 07	0	2	1	0	3	33	62	24	5	2	3	1	0	136	1	630	0.2	2.8	1.7	2.4
Jun 01	0	0	1	0	4	37	60	31	7	4	5	0	0	149	1	743	0.1	3.1	2.1	2.6
May 24	0	2	3	3	2	50	100	35	9	7	5	0	3	219	8	1045	0.8	3.1	3.2	3.7
May 17	0	8	4	1	5	35	62	36	8	7	6	0	0	172	13	1268	1.0	3.1	4.7	5.6
May 10	1	2	2	1	7	49	53	32	5	8	6	0	1	167	6	1028	0.6	3.1	6.5	7.2
May 4	0	6	7	2	3	51	60	34	6	10	3	1	1	184	15	761	2.0	3.1	8.2	8.5

Flu PCR
% Rate

ACL RESP. PANEL - Influenza POS rate 2018-2019 season

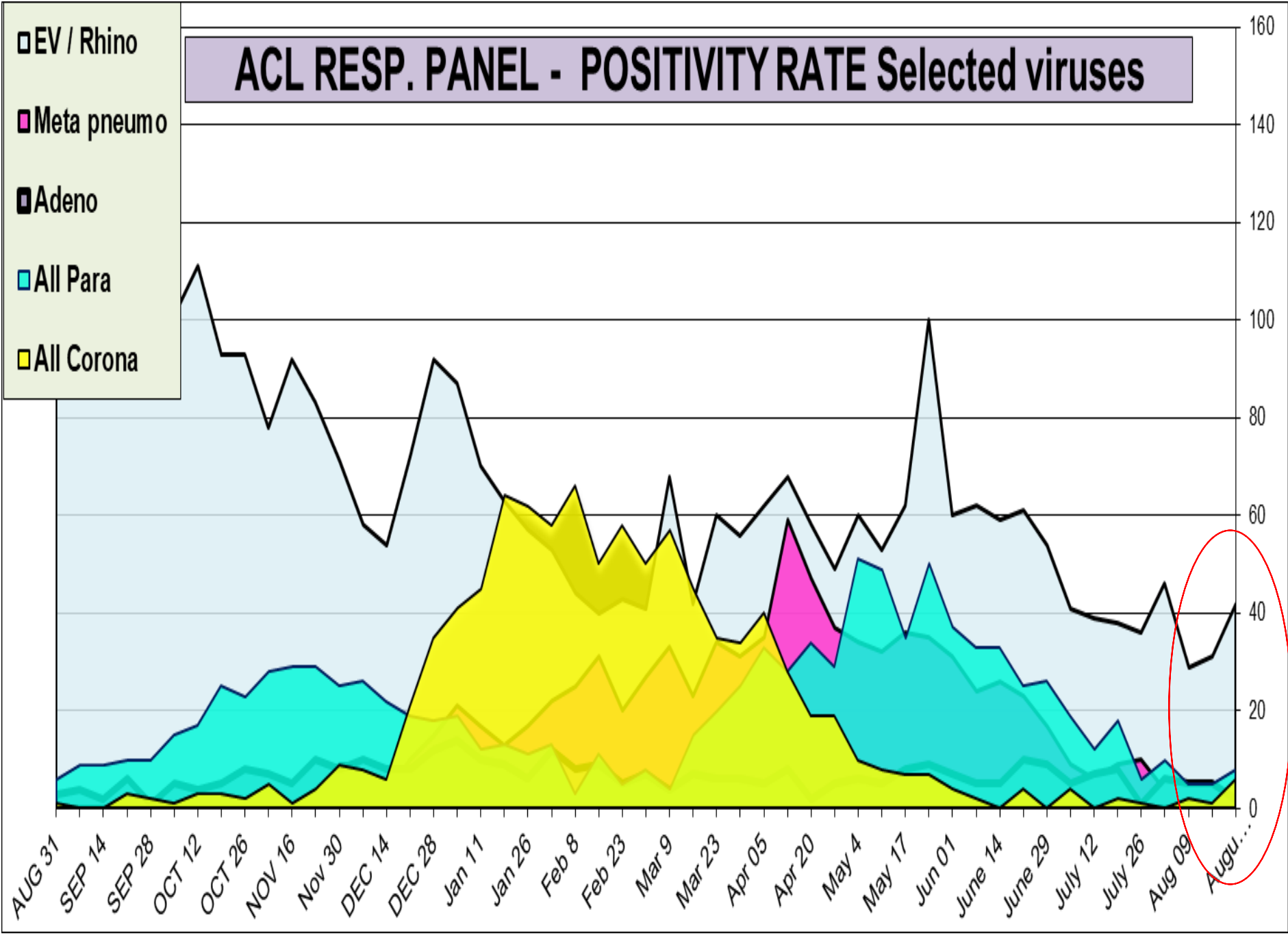


Influenza Positive Tests Reported to CDC by U.S. Clinical Laboratories, National Summary, 2018-2019 Season



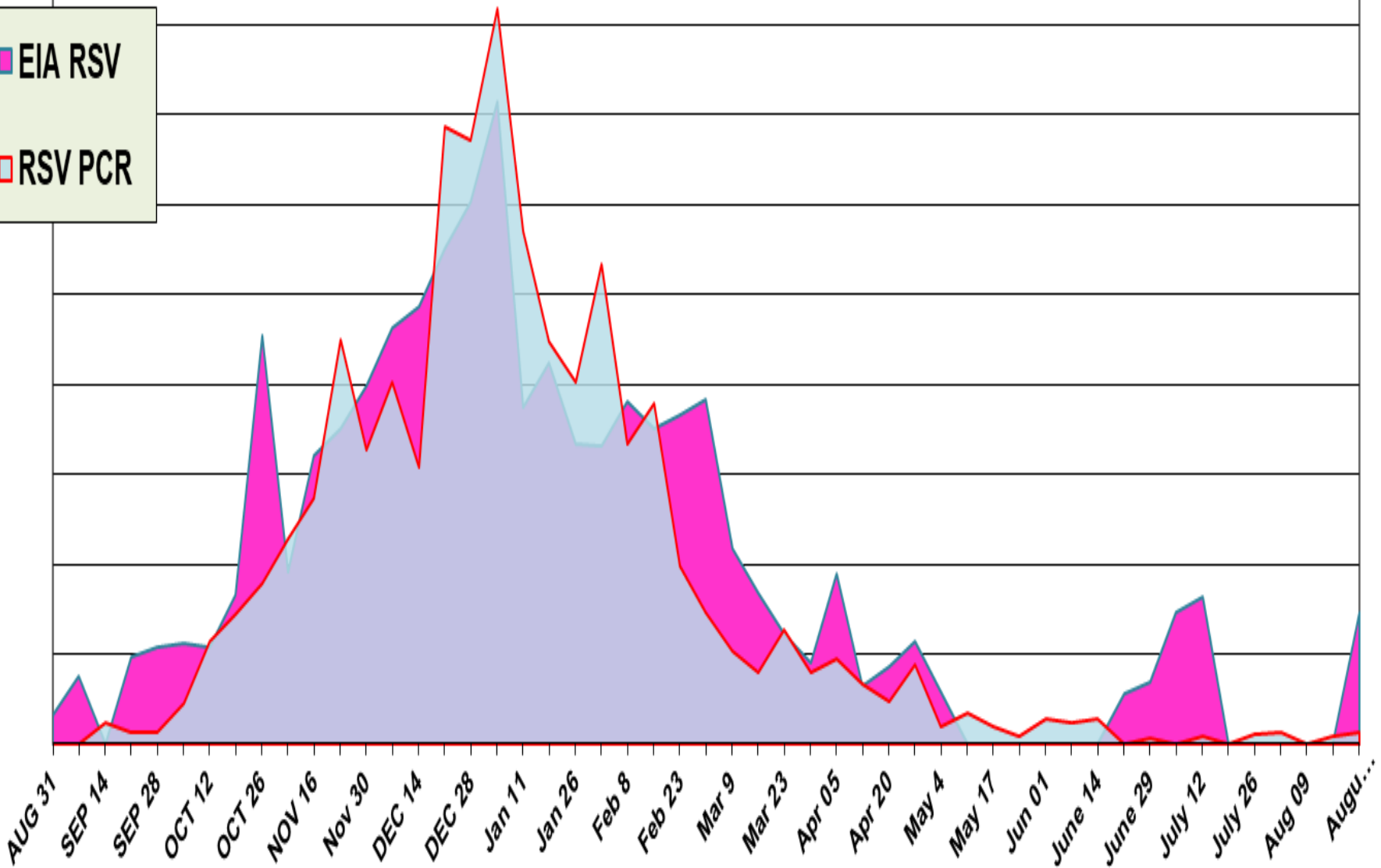
ACL RESP. PANEL - POSITIVITY RATE Selected viruses

- EV / Rhino
- Meta pneumo
- Adeno
- All Para
- All Corona

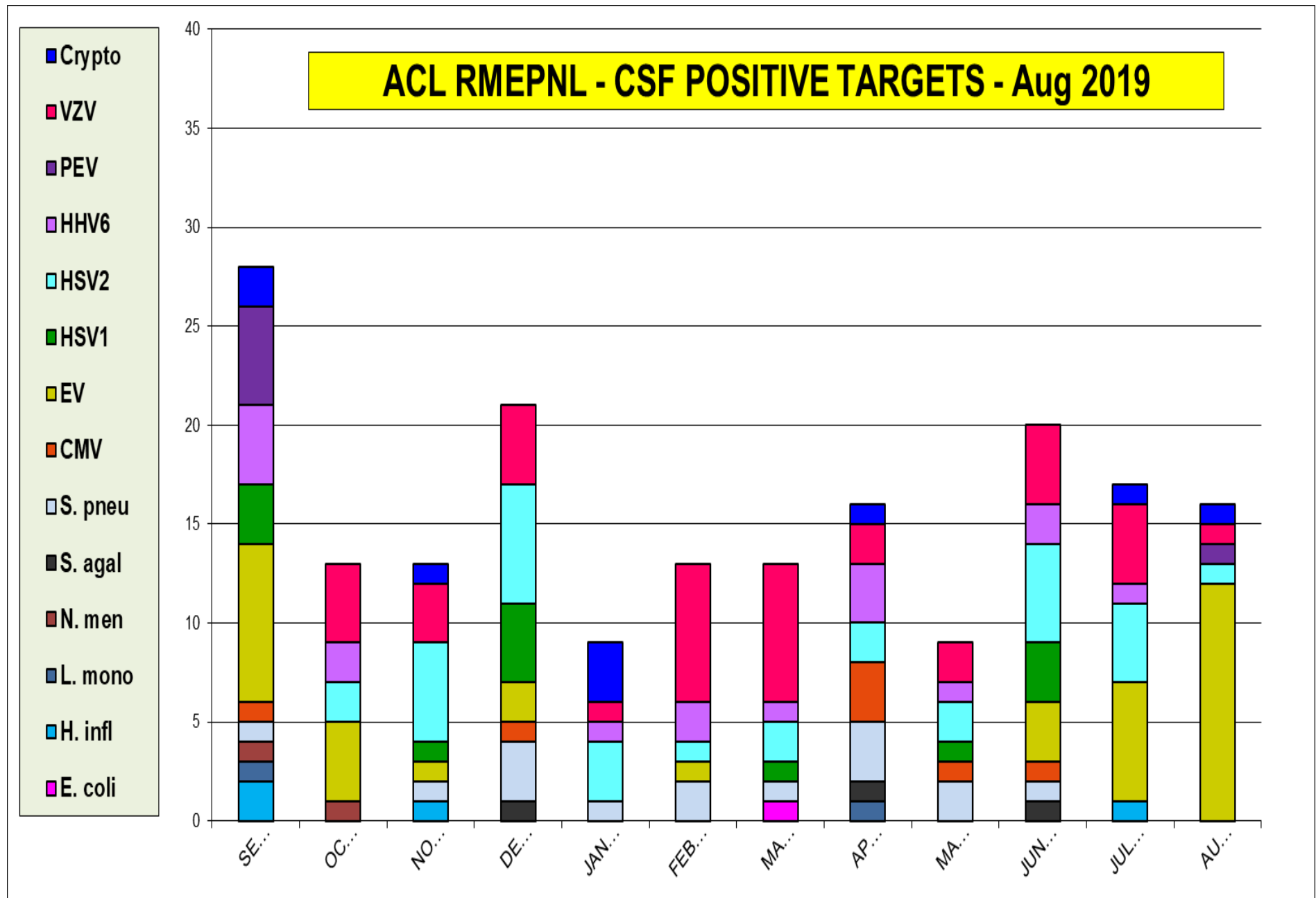


ACL RESP. PANEL - RSV PCR - 0.2%, RSV EIA - 0.0%

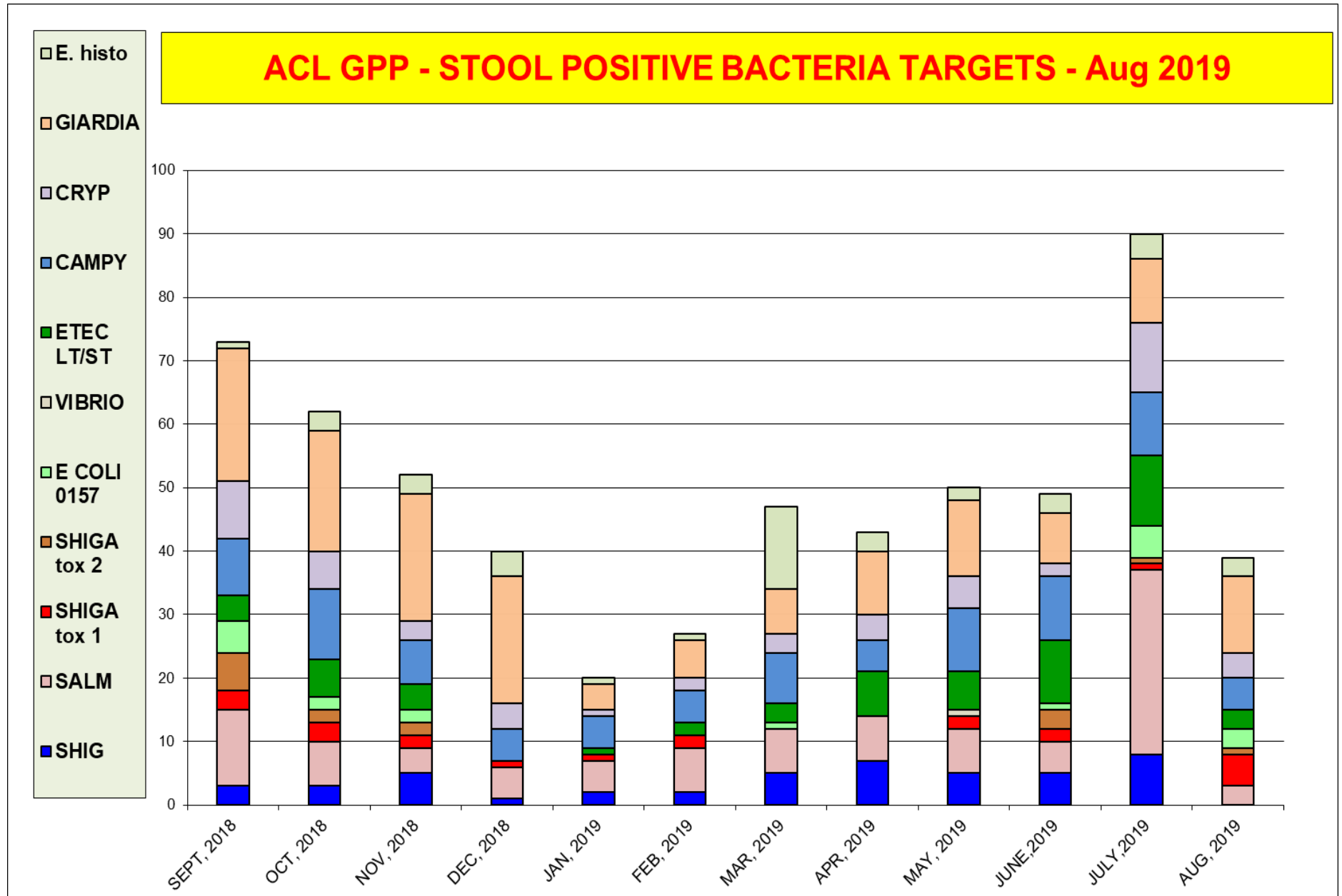
- EIA RSV
- RSV PCR



The most prevalent targets is Enterovirus (pos rate 11%)

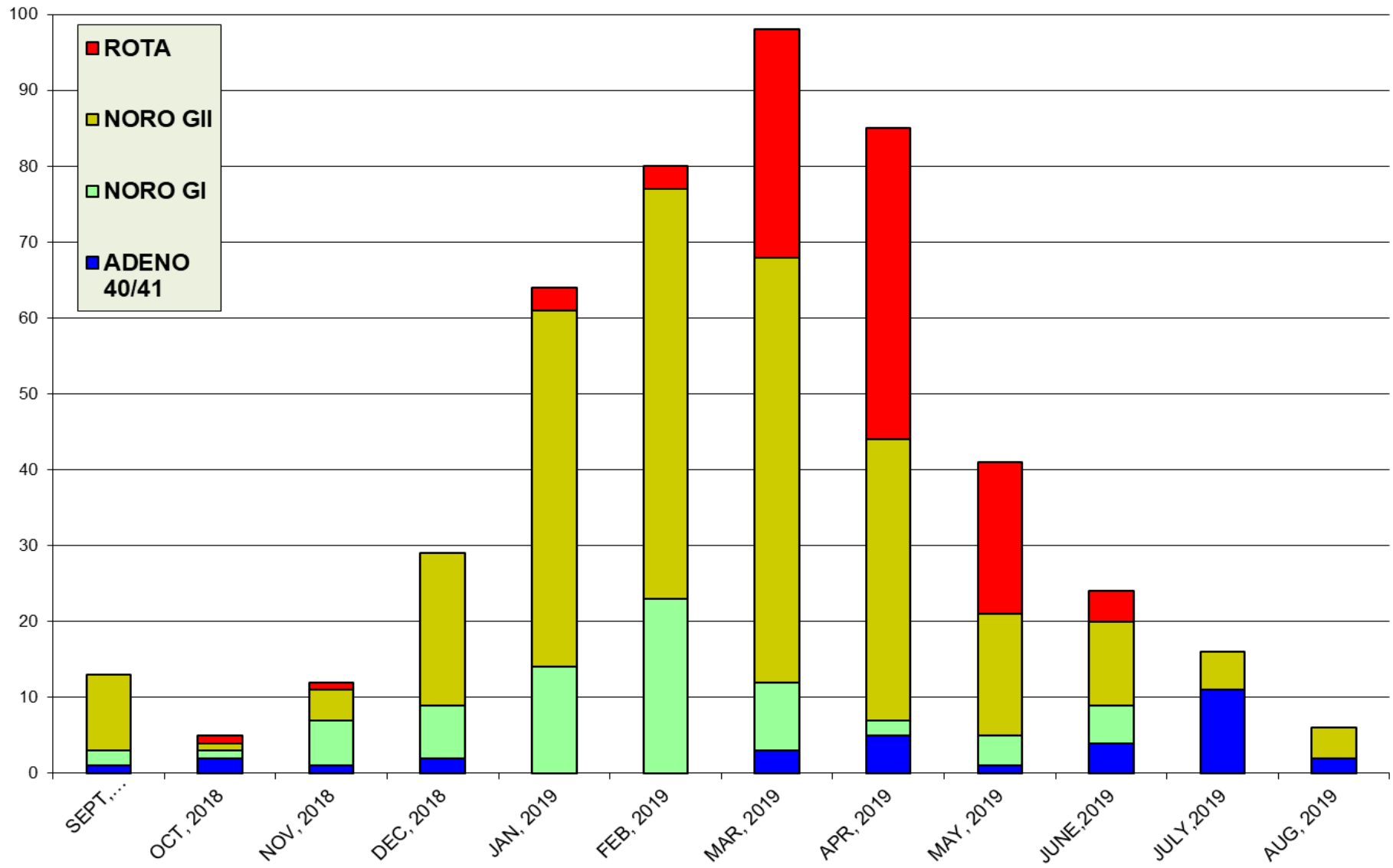


The most prevalent bacterial targets is **Giardia**



The most prevalent virus target is **Adenovirus**

ACL GPP - STOOL POSITIVE VIRAL TARGETS - Aug 2019



BV	C.ALB	C.GLB	C.KUR	T.VAG	M.GEN	M.HOM	U.PAV	Tot. pos.
4,871	4,871	4,871	4,871	4,871	4,871	4,871	4,871	4,871
24.3	15.5	2.2	0.3	3.3	0.6	10.1	25.9	80.6

