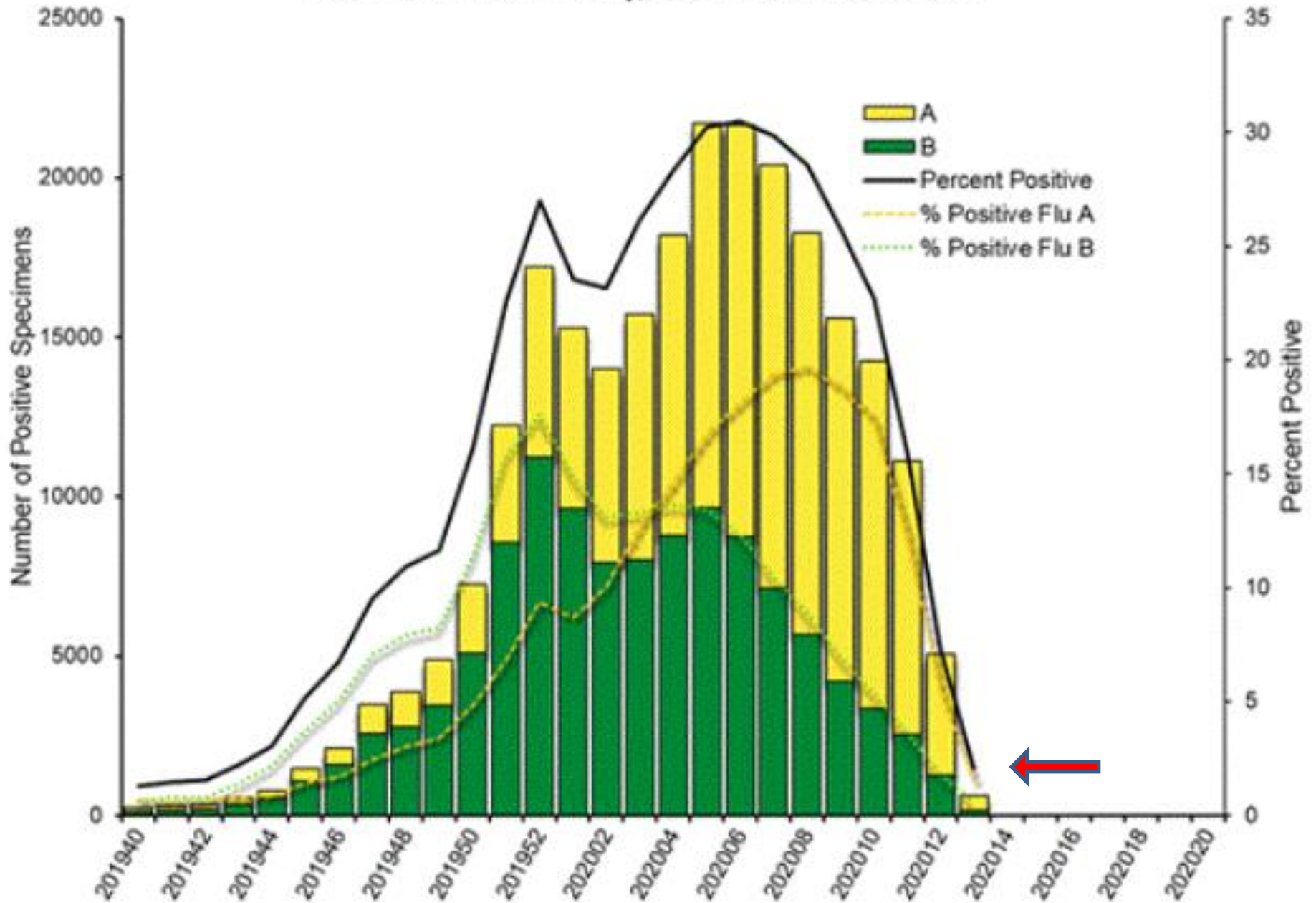


Respiratory Pathogens - 04 04 2020

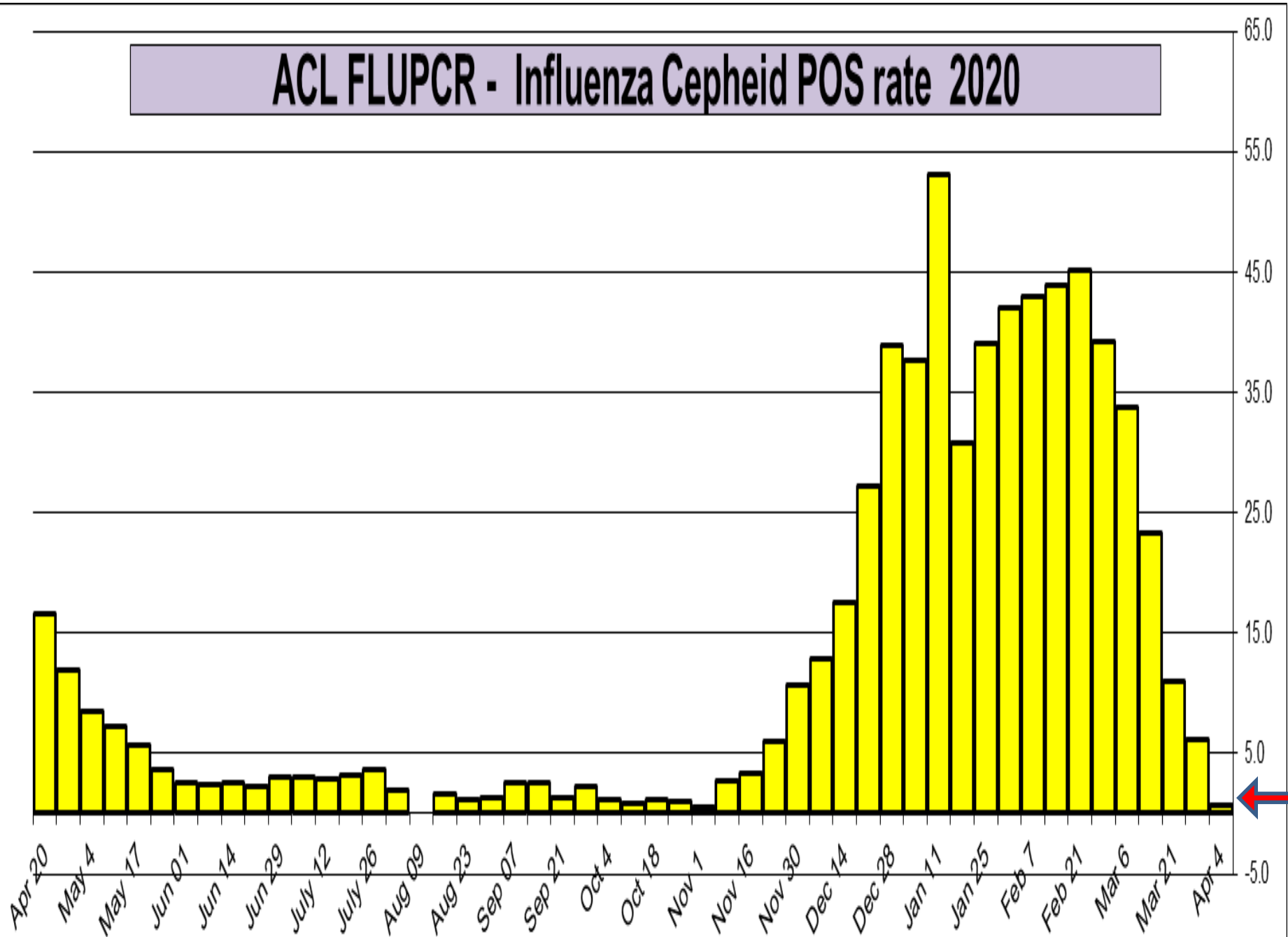


Week	InfA-H1	InfA-H3	2009 H1N1	Inf B	RSV	All Para	EV / Rhino	Meta pneumo	Adeno	All Corona	Bocca	Myc. pneumo	Chlam. pneumo.	Legionella pneumo.	BP / BPP	Total Pos	POS FLU	Total	ACL RPPNL	US %FLU	IL/WI PCR	ACL FLUPCR	COVID ACL PCR
Apr 4	0	0	0	0	3	0	5	6	5	1	0	1	0	0	1	22	0	66	0.0	n/a	n/a	0.7	27.3
Mar 27	0	0	4	7	17	4	49	38	13	22	3	0	0	0	1	168	11	121	9.1	2.1	2.1	6.2	25.3
Mar 21	0	0	77	20	53	6	174	99	25	54	8	3	2	0	3	530	103	1691	6.1	7.3	10.4	11.0	15.8
Mar 14	0	7	112	26	45	5	121	72	16	50	9	3	3	0	3	493	166	1319	12.6	14.8	20.2	23.3	n/a
Mar 6	0	3	103	16	43	8	113	81	6	23	7	0	1	0	4	421	135	1063	12.7	22.2	29.7	33.7	n/a
Feb 28	0	1	81	19	38	4	56	39	10	21	2	2	0	0	2	275	127	760	16.7	26.1	38.3	39.3	n/a
Feb 21	0	4	78	22	59	4	70	59	12	28	10	0	1	0	2	349	114	893	12.8	28.4	37.0	45.2	n/a
Feb 13	0	3	90	32	68	5	63	55	5	27	12	1	1	0	0	362	111	795	14.0	29.7	38.0	43.9	n/a
Feb 7	0	3	76	32	73	5	51	69	12	14	10	2	1	0	1	349	111	958	11.6	30.1	37.3	42.9	n/a
Feb 1	0	1	55	24	81	12	63	61	13	5	5	1	1	1	1	324	80	1205	6.6	28.1	33.9	42.1	n/a
Jan 25	0	3	33	24	82	5	32	38	5	4	7	2	0	0	2	237	60	1197	5.0	26.2	30.7	39.1	n/a
Jan 18	0	3	17	14	98	9	39	42	15	6	6	3	1	0	2	255	34	819	4.2	23.2	26.9	30.8	n/a
Jan 11	0	4	26	22	113	13	39	60	16	2	3	5	0	0	1	304	52	1010	5.1	23.8	25.9	53.0	n/a
Jan 4	0	3	18	24	119	17	52	61	21	9	13	4	1	0	0	342	45	1027	4.4	24.0	22.3	37.6	n/a

Influenza Positive Tests Reported to CDC by U.S. Clinical Laboratories, National Summary, 2019-2020 Season

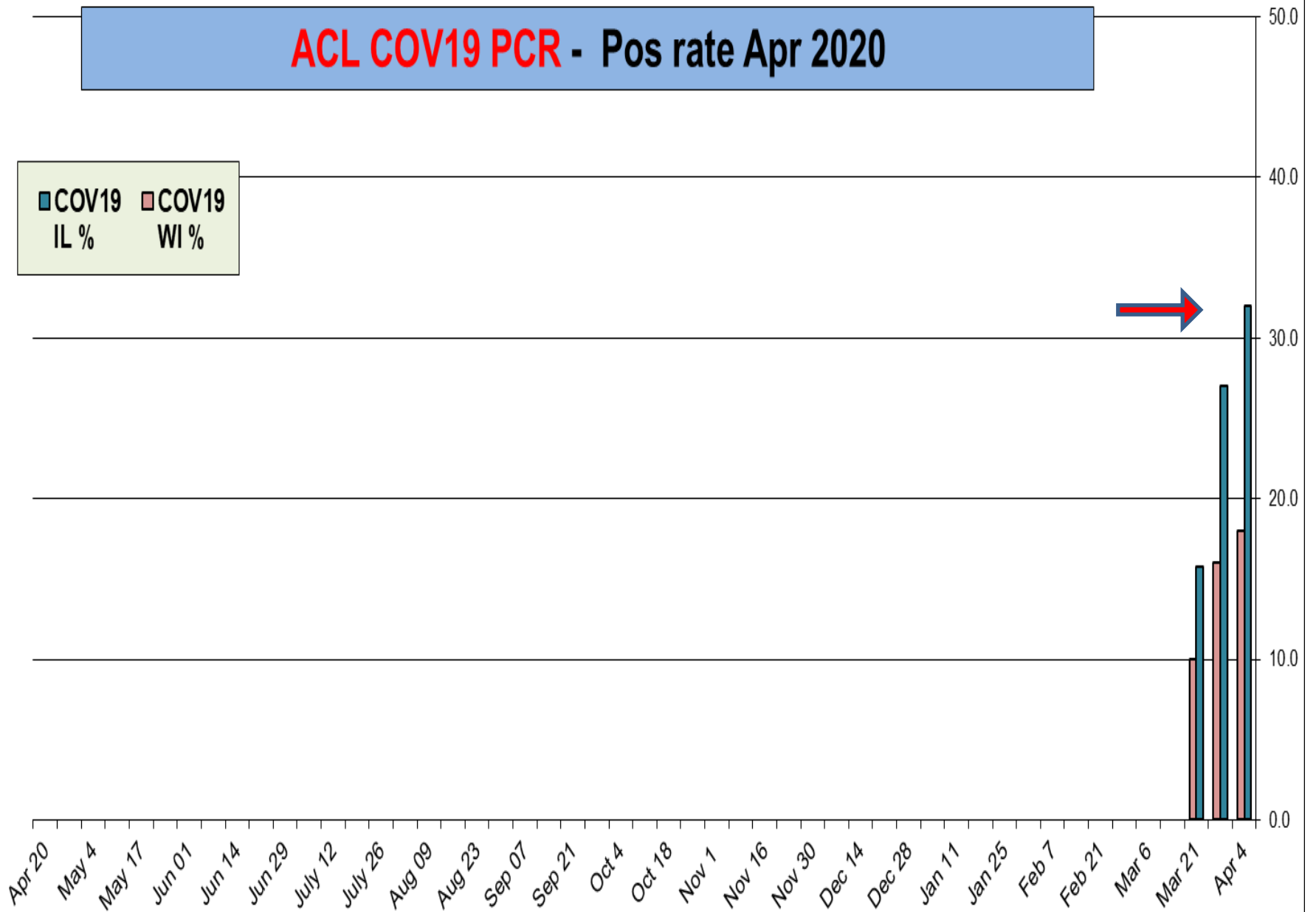


ACL FLUPCR - Influenza Cepheid POS rate 2020

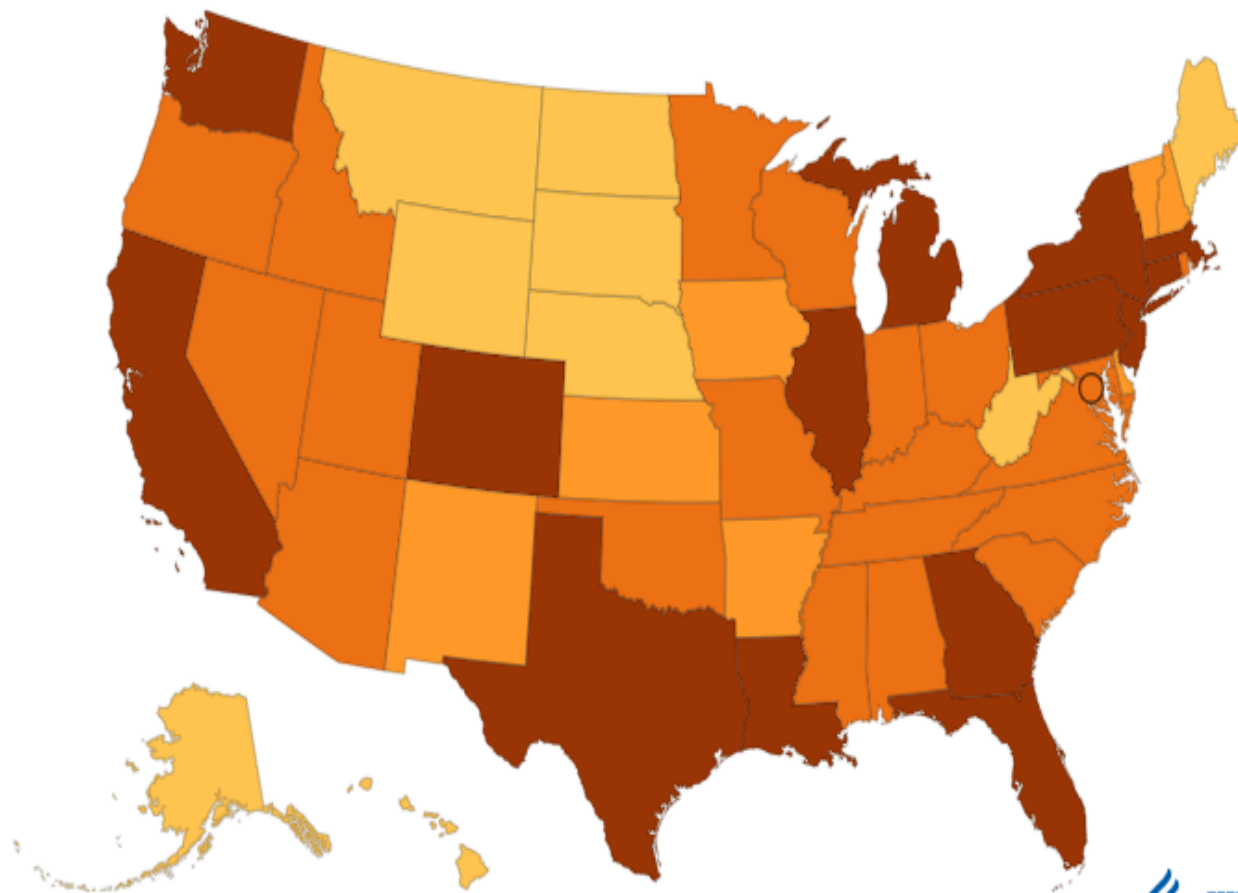


ACL COV19 PCR - Pos rate Apr 2020

■ COV19 IL %
■ COV19 WI %



States Reporting Cases of COVID-19 to CDC*



Reported Cases

(last updated April 7, 2020)

- None
- 6 to 50
- 101 to 500
- 501 to 1000
- 1001 to 5000
- 5001 or more

Territories AS GU MH FM MP PW PR VI



Neuraminidase Inhibitors Resistance in samples collected – as of Mar 28, 2020

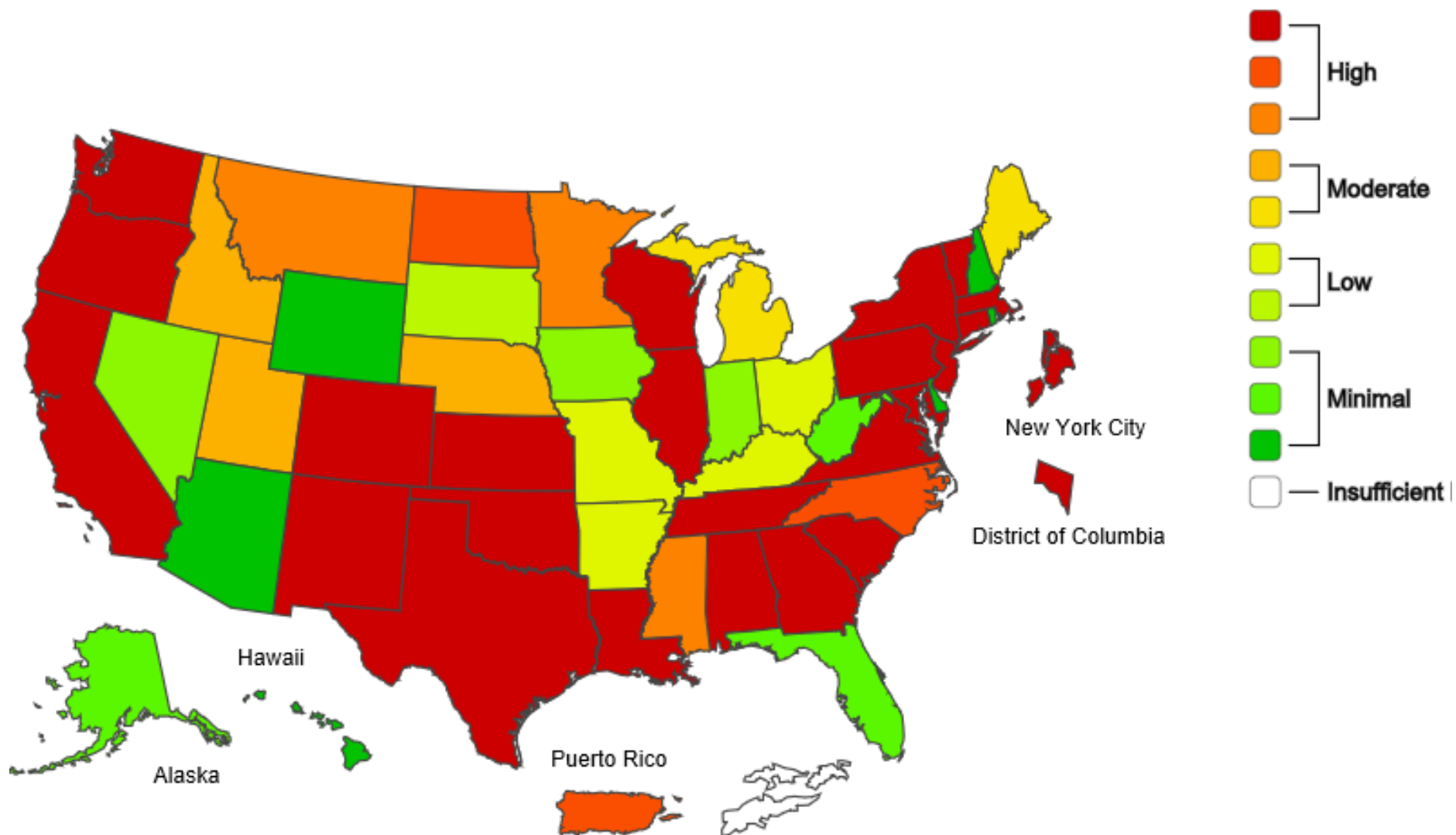
	Oseltamivir		Peramivir		Zanamivir	
	Virus Samples tested (n)	Resistant Viruses, (%)	Virus Samples tested (n)	Resistant Viruses, (%)	Virus Samples tested (n)	Resistant Viruses, (%)
Inf A (H1N1) pdm09	851	0.5	851	0.5	851	0
Inf A (H3N2)	494	0	494	0	494	0
Inf B	1016	0	1016	0	1016	0.2

PA Endonuclease Inhibitor Resistance

	Baloxavir					
	Virus Samples tested (n)	Resistant Viruses, (%)				
Inf A (H1N1) pdm09	864	0				
Inf A (H3N2)	573	0				
Inf B	1039	0				

2019-20 Influenza Season Week 13 ending Mar 28, 2020

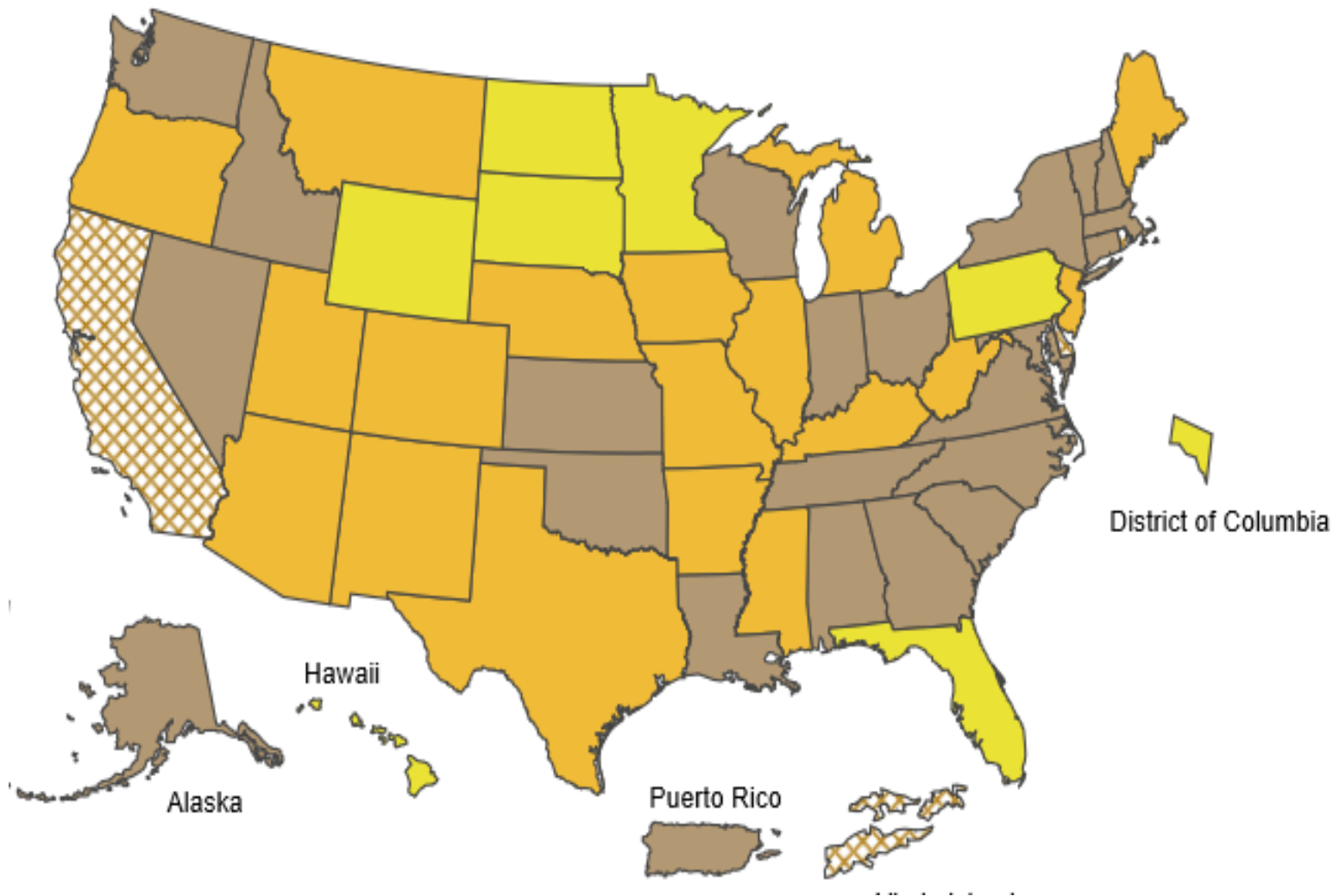
ILI Activity Level



Week Ending Mar 28, 2020 - Week 13

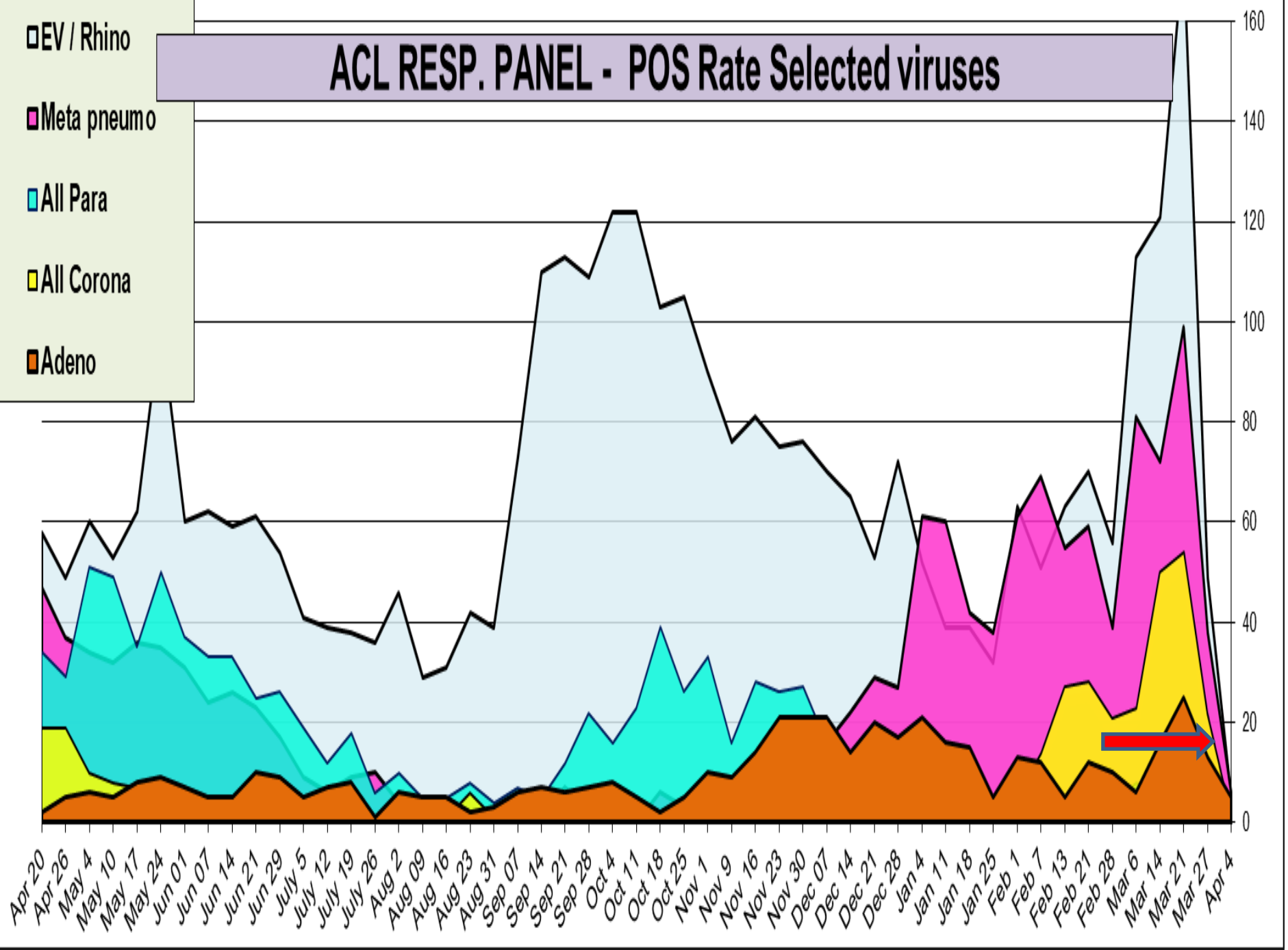
Influenza Activity |

- No Activity
- Sporadic
- Local Activity
- Regional
- Widespread
- No Report

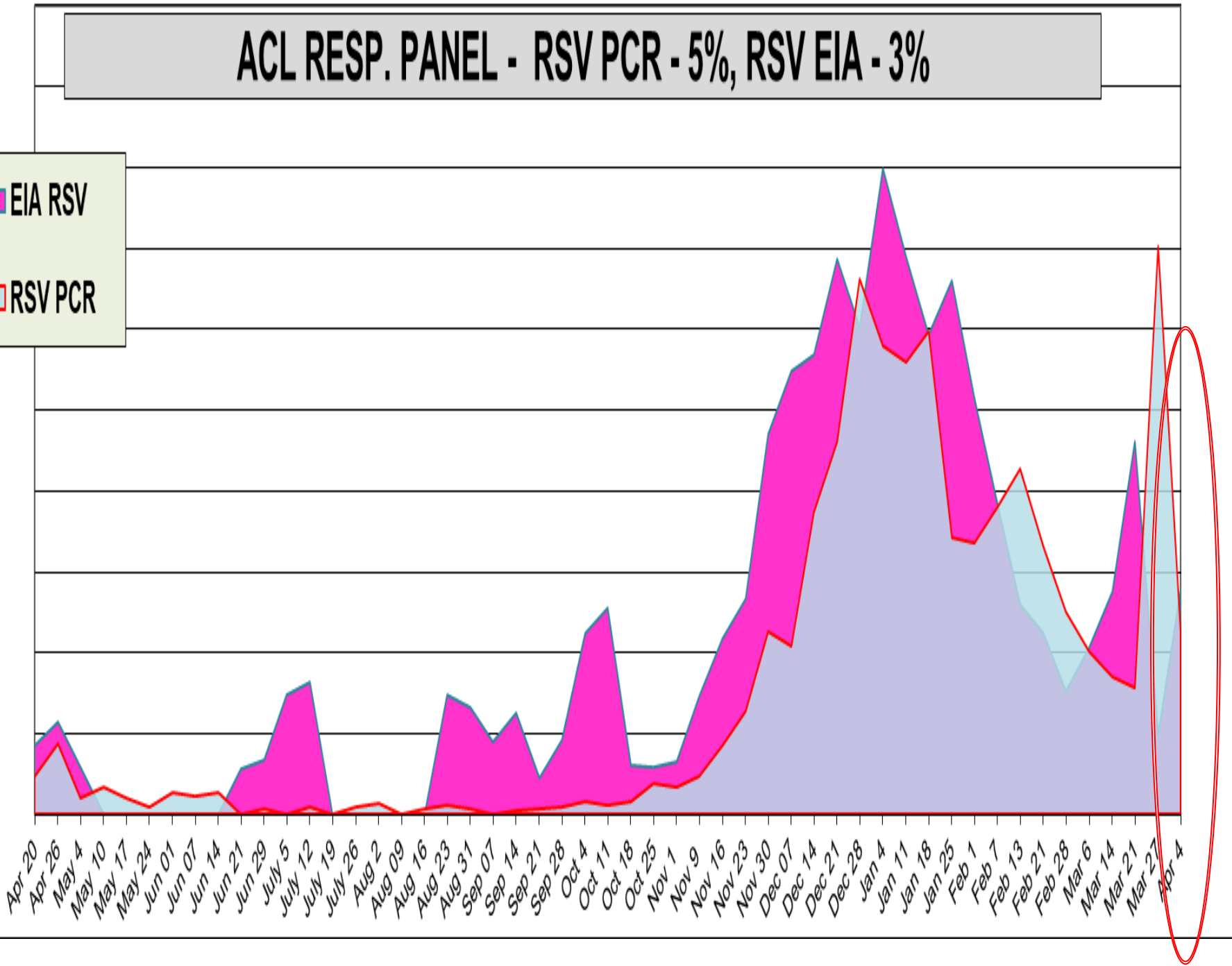


ACL RESP. PANEL - POS Rate Selected viruses

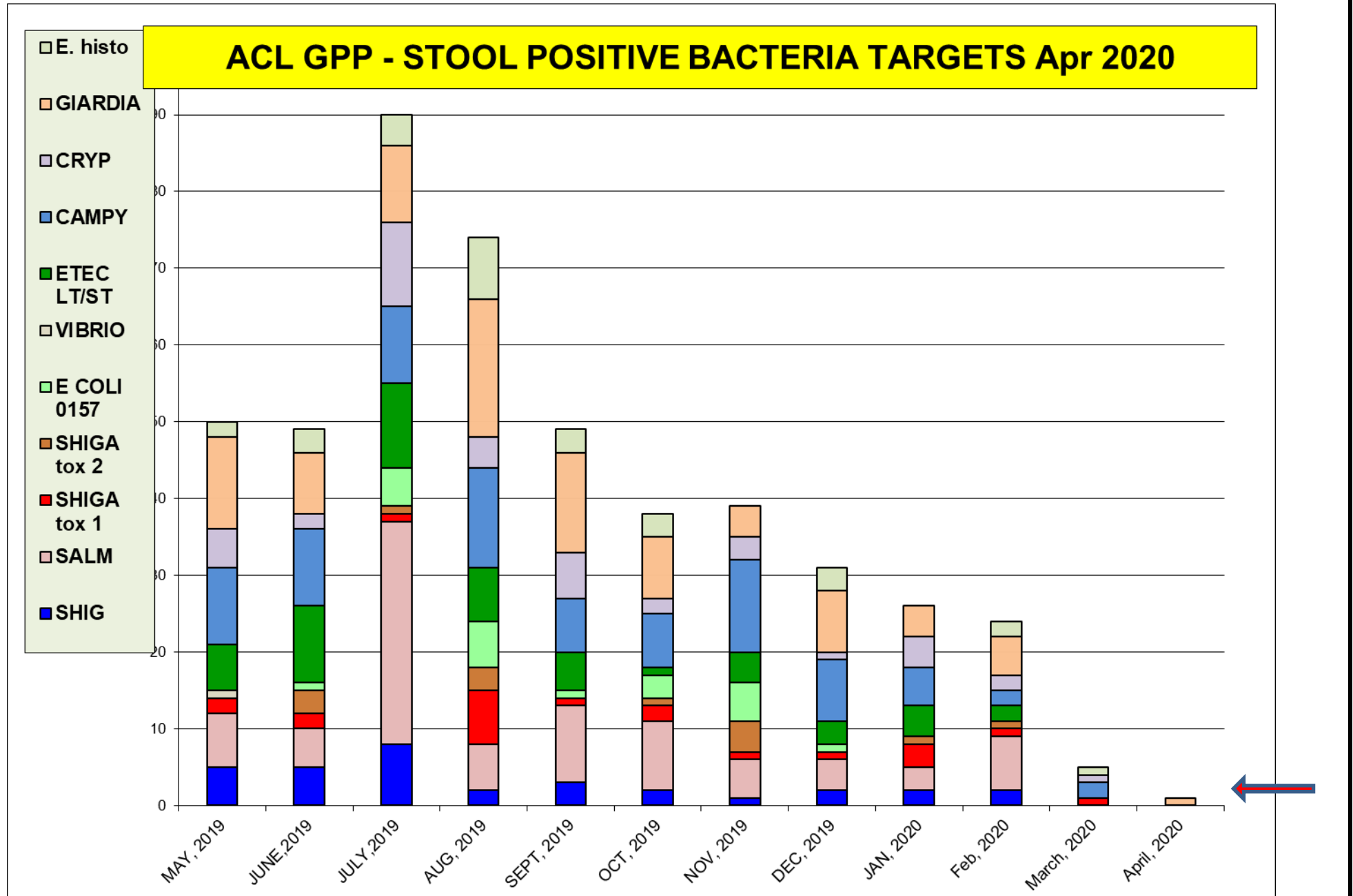
- EV / Rhino
- Meta pneumo
- All Para
- All Corona
- Adeno



ACL RESP. PANEL - RSV PCR - 5%, RSV EIA - 3%



The most prevalent bacterial target is **Giardia**



The most prevalent virus target is **Norovirus 1%**

