

ACL Laboratories Respiratory Virus Activity Report

Updated 9/11/2024



Now part of  ADVOCATEHEALTH



Respiratory Pathogens Monthly % Positivity - Oct-23 thru Sep-24

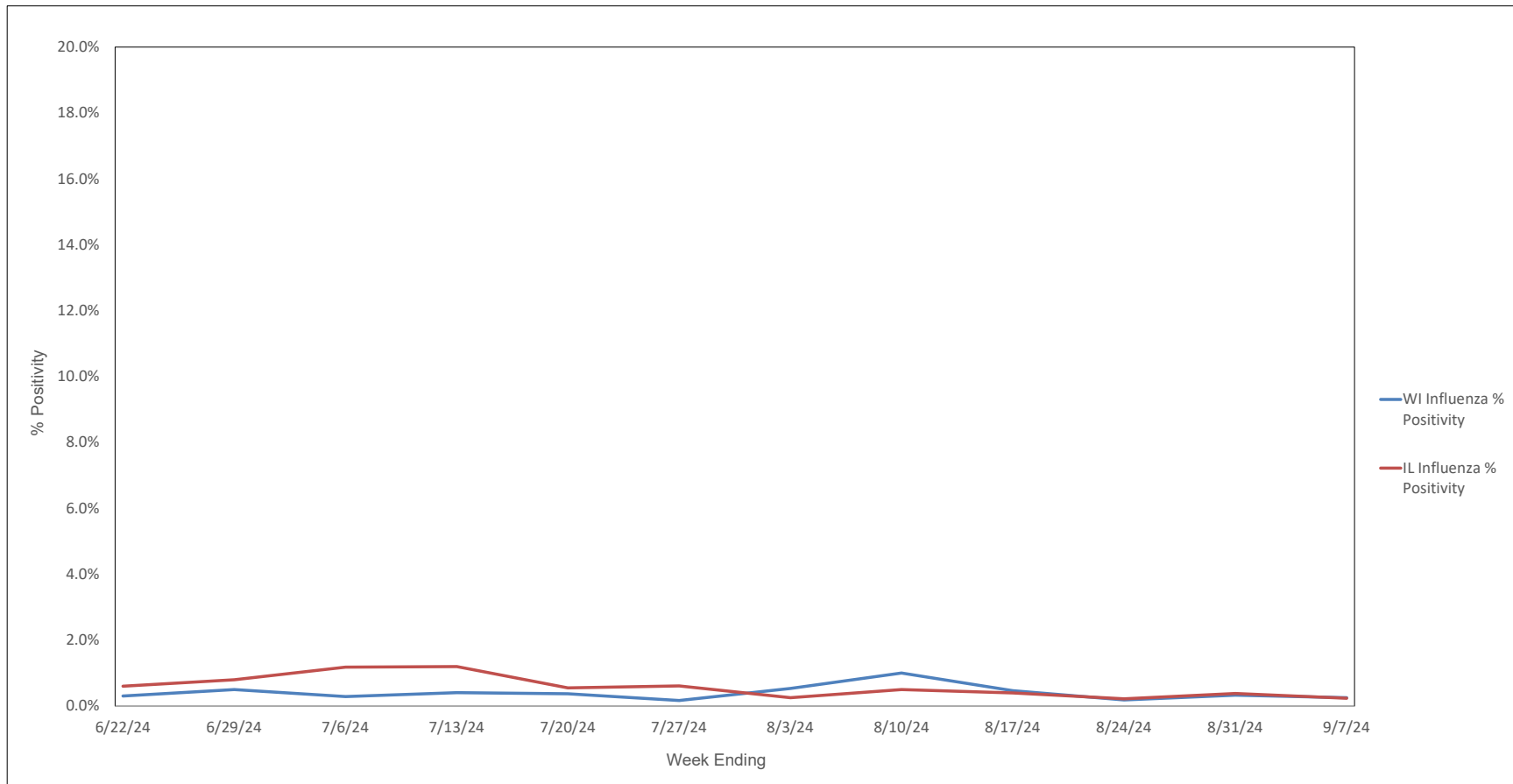
MONTH - YEAR	Flu A % Positive	% Flu A H1N1 Subtype*	% Flu A 2009 H1N1 Subtype*	% Flu A H3N2 Subtype*	% Flu A No Subtype*	Flu B % Positive	RSV A/B % Positive	HPIV-1 % Positive	HPIV-2 % Positive	HPIV-3 % Positive	HPIV-4 % Positive	HCOV 229E % Positive	HCOV NL63 % Positive	HCOV OC43 % Positive	HCOV HKU1 % Positive	SARS-CoV-2 % Positive	HMPV % Positive	Rhinovirus / Enterovirus % Positive	Adenovirus % Positive	C. pneumoniae % Positive	M. pneumoniae % Positive	B. pertussis % Positive	B. parapertussis % Positive	L. pneumophila # Positive
Sep-24	0.2%	0.0%	100.0%	0.0%	0.0%	0.0%	0.1%	0.1%	0.2%	0.8%	1.1%	0.1%	0.8%	0.1%	0.0%	12.8%	0.4%	24.5%	1.3%	0.3%	4.3%	0.7%	0.0%	0
Aug-24	0.4%	0.0%	50.0%	50.0%	0.0%	0.1%	0.2%	0.2%	0.1%	1.2%	1.8%	0.0%	0.7%	0.0%	0.0%	16.1%	0.5%	14.2%	1.6%	0.1%	2.5%	0.3%	0.0%	0
Jul-24	0.5%	0.0%	33.3%	50.0%	16.7%	0.0%	0.1%	0.2%	0.0%	4.1%	1.3%	0.2%	0.9%	0.1%	0.0%	13.1%	1.3%	13.4%	1.8%	0.0%	1.3%	0.4%	0.0%	0
Jun-24	0.6%	0.0%	55.6%	33.3%	11.1%	0.1%	0.2%	0.1%	0.0%	9.3%	0.5%	0.2%	0.8%	0.1%	0.0%	5.9%	4.0%	16.5%	2.6%	0.0%	0.5%	0.4%	0.0%	0
May-24	0.8%	0.0%	50.0%	50.0%	0.0%	0.8%	0.5%	0.1%	0.0%	8.3%	0.3%	0.5%	0.6%	0.3%	0.2%	2.7%	7.0%	15.5%	2.4%	0.0%	0.3%	0.1%	0.0%	1
Apr-24	2.8%	0.0%	56.0%	44.0%	0.0%	4.6%	1.0%	0.0%	0.0%	5.6%	0.1%	1.1%	0.8%	1.2%	0.3%	3.1%	9.5%	13.6%	3.1%	0.0%	0.3%	0.0%	0.0%	0
Mar-24	5.8%	0.0%	73.8%	26.2%	0.0%	9.4%	1.8%	0.0%	0.0%	1.9%	0.1%	1.4%	0.7%	2.1%	1.5%	4.3%	7.9%	12.6%	3.2%	0.0%	0.0%	0.0%	0.0%	0
Feb-24	8.4%	0.0%	72.5%	27.5%	0.0%	6.0%	0.5%	0.0%	0.0%	0.5%	0.1%	1.3%	0.2%	4.8%	1.5%	8.7%	3.0%	12.7%	4.1%	0.0%	0.2%	0.1%	0.0%	0
Jan-24	11.0%	0.0%	78.5%	21.5%	0.0%	1.6%	7.1%	0.2%	0.1%	0.4%	0.2%	0.4%	0.0%	3.4%	0.4%	10.5%	1.2%	7.1%	5.2%	0.0%	0.4%	0.2%	0.1%	0
Dec-23	11.2%	0.0%	70.1%	29.9%	0.0%	0.8%	10.3%	0.9%	0.3%	0.0%	0.5%	0.2%	0.1%	2.7%	0.4%	14.4%	0.8%	12.7%	5.6%	0.0%	0.6%	0.0%	0.0%	0
Nov-23	2.6%	0.0%	50.0%	50.0%	0.0%	0.3%	10.2%	1.6%	0.6%	0.4%	0.9%	0.0%	0.0%	0.4%	0.1%	12.5%	0.4%	16.8%	5.7%	0.0%	0.5%	0.0%	0.3%	0
Oct-23	0.6%	0.0%	100.0%	0.0%	0.0%	0.1%	4.0%	2.4%	0.8%	0.3%	1.0%	0.1%	0.1%	0.2%	0.0%	8.9%	0.5%	19.1%	2.6%	0.0%	0.4%	0.0%	0.0%	0

* Represents the % of Influenza A positive samples that are positive for each subtype; subtyping is not performed on all Influenza A specimens (only those specimens tested with the Rapid Respiratory Pathogen Panel)
 Flu A = Influenza Type A, Flu B = Influenza Type B, RSV A/B = Respiratory Syncytial Virus Type A/B (not differentiated), HPIV = Human Parainfluenza Virus, HCOV = Human Coronavirus, HMPV = Human Metapneumovirus



Now part of ADVOCATEHEALTH

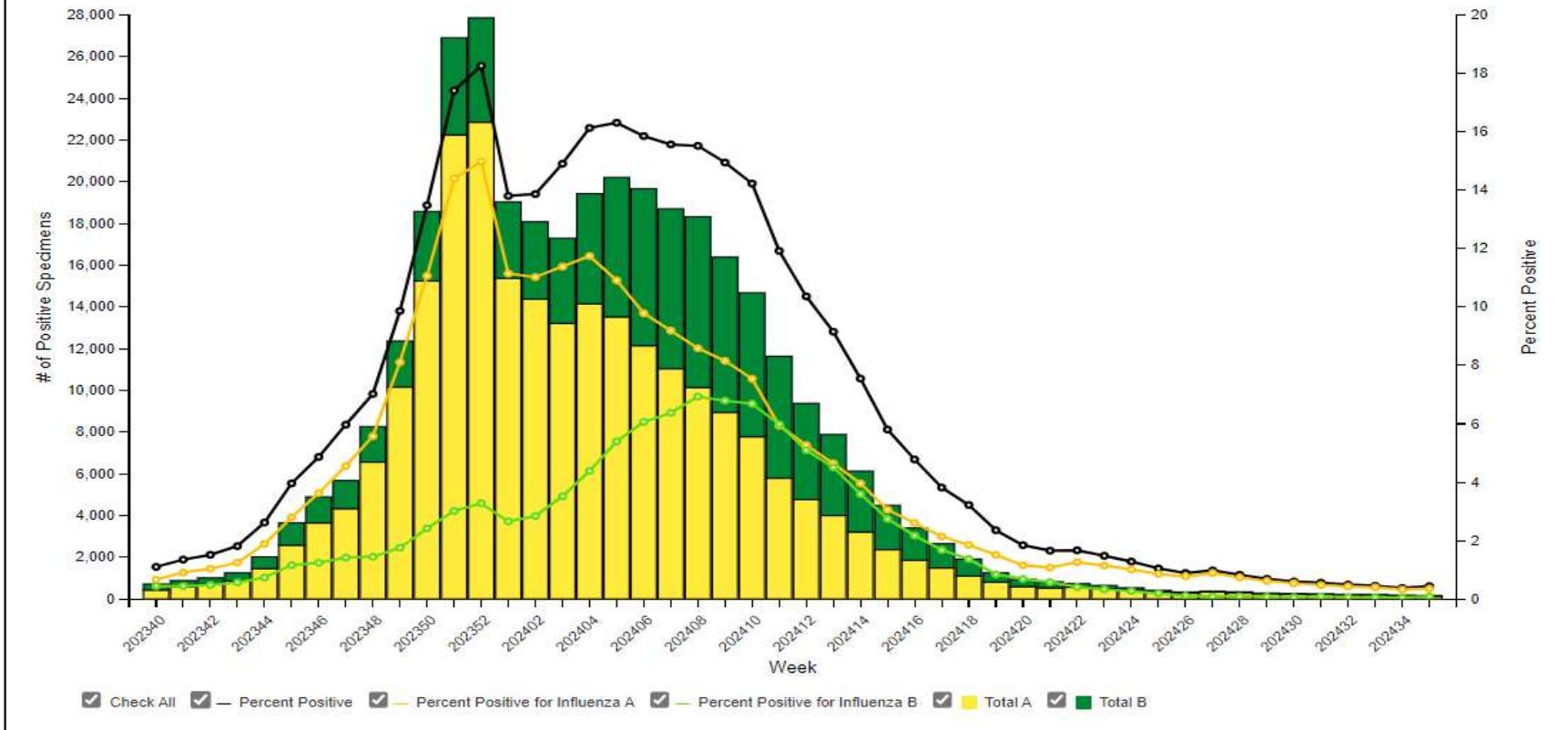
Weekly Influenza PCR % Positivity by State - 6/22/24 thru 9/7/24





National Influenza Positivity Rates (Data from CDC)

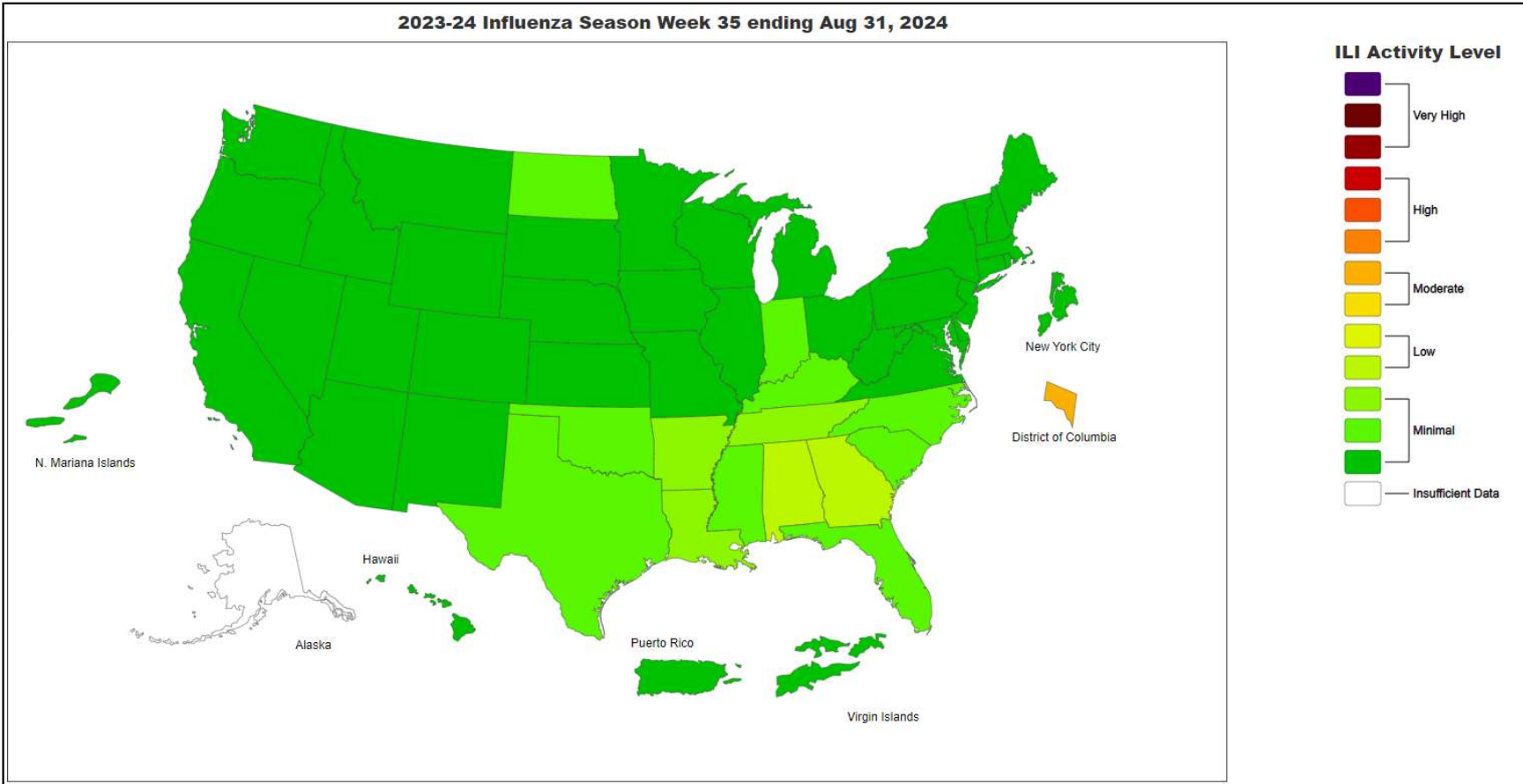
Influenza Positive Tests Reported to CDC by Clinical Laboratories, National Summary, 2023-24 Season, week ending Aug 31, 2024





National Influenza Positivity Rates (Data from CDC)

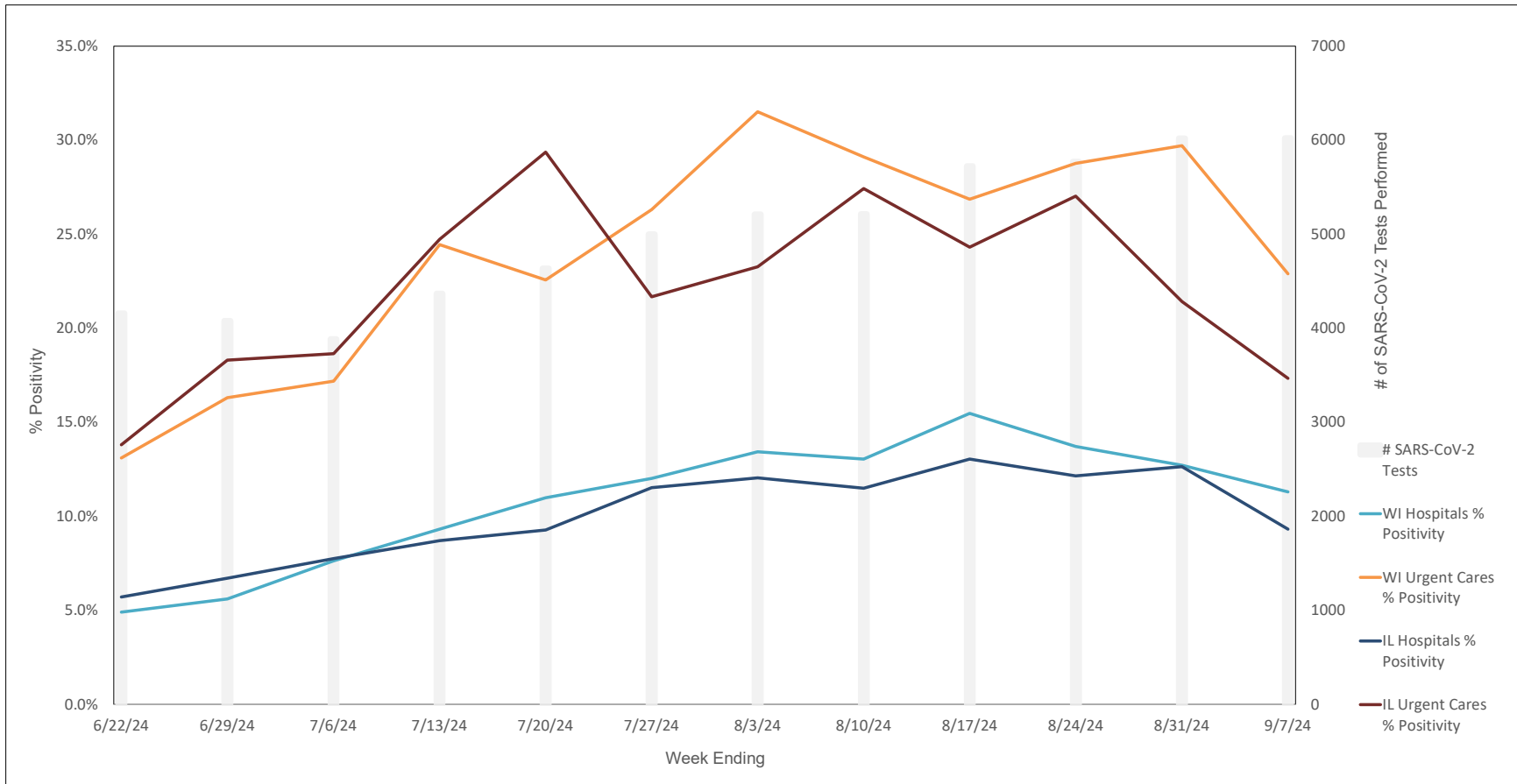
2023-24 Influenza Season Week 35 ending Aug 31, 2024





Now part of ADVOCATEHEALTH

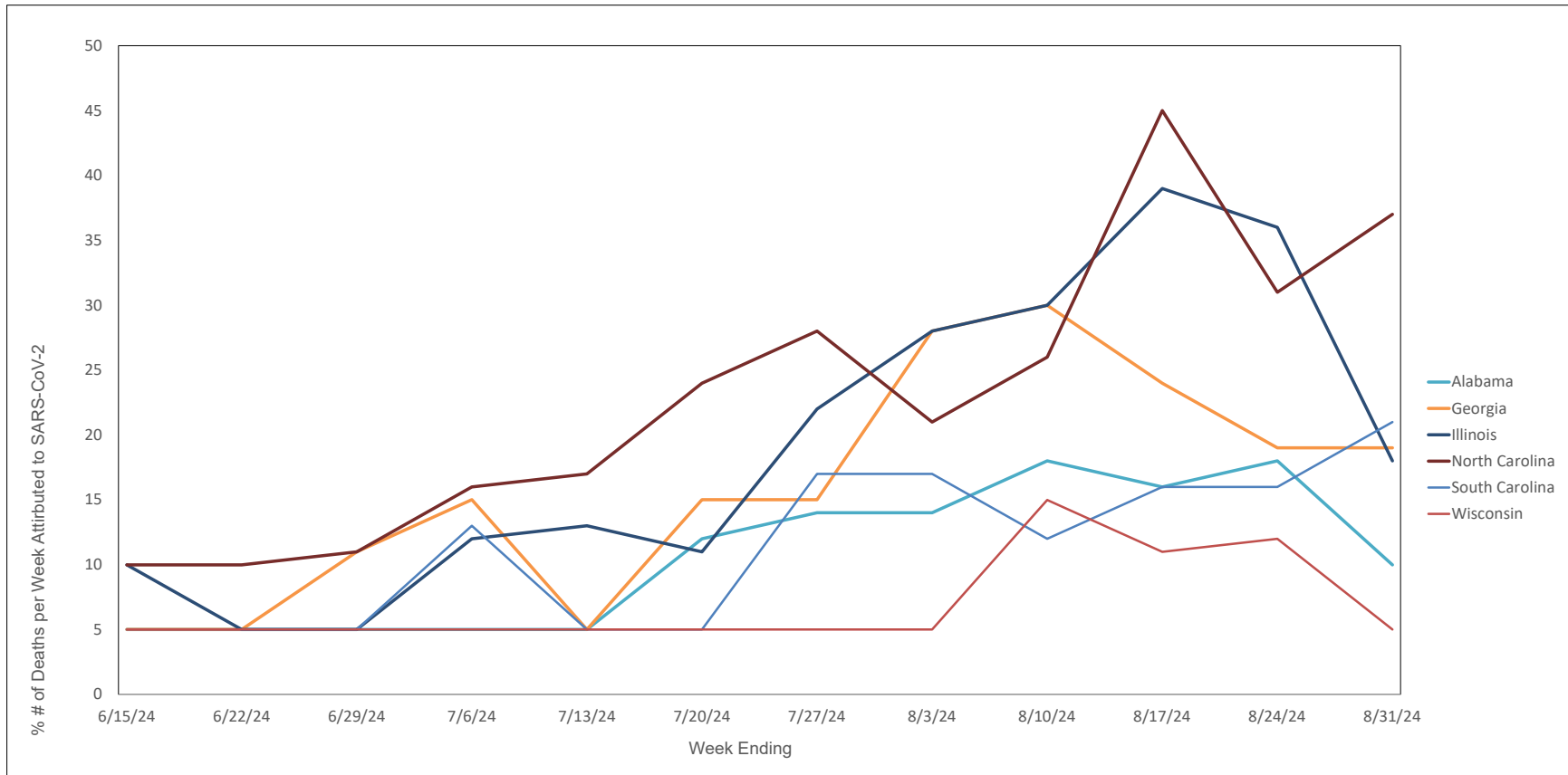
Weekly SARS-CoV-2 PCR % Positivity Rate - 6/22/24 thru 9/7/24





Now part of ADVOCATEHEALTH

Weekly Deaths Attributed to SARS-CoV-2 by State - 6/15/24 thru 8/31/24



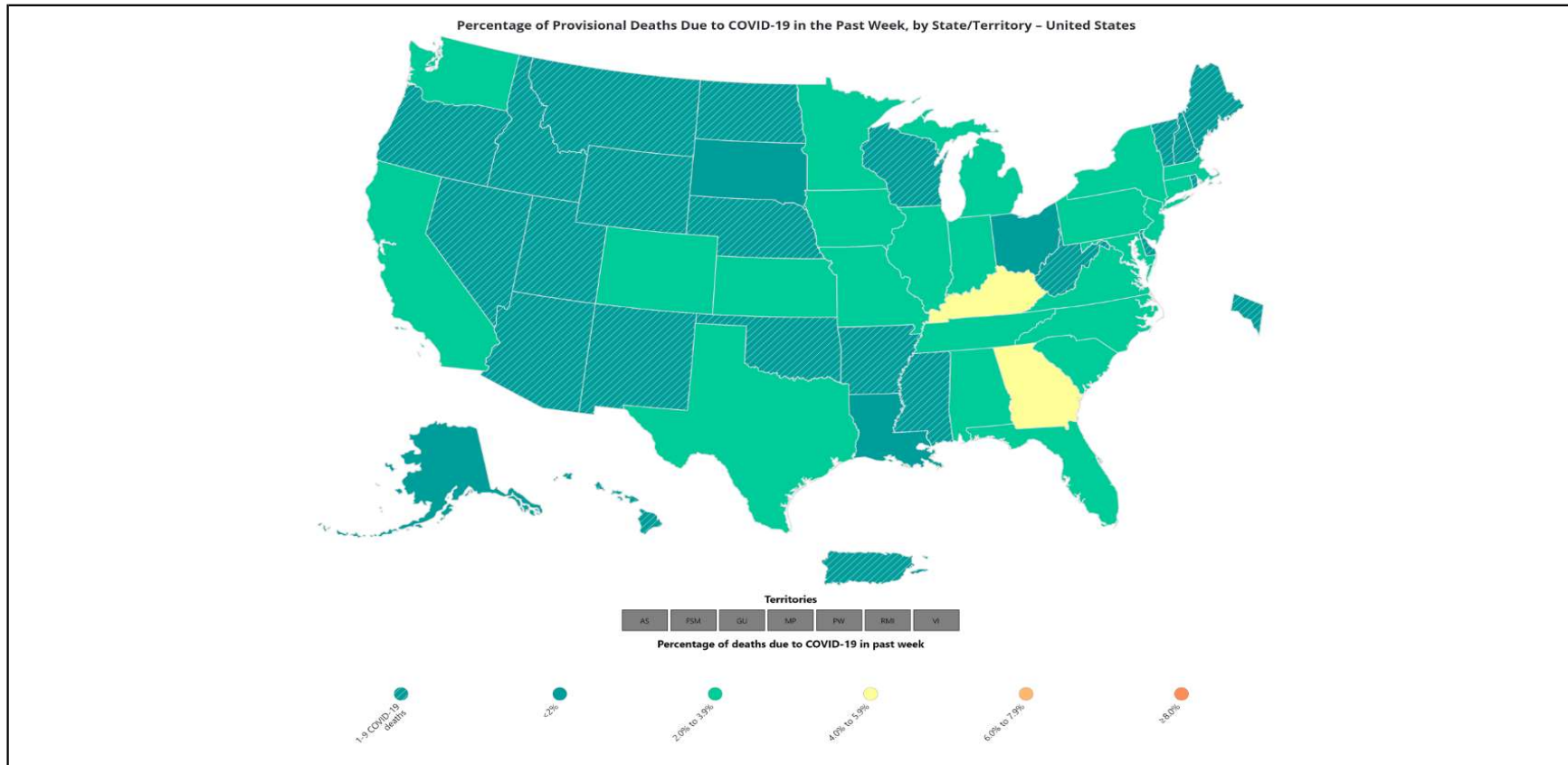
States do not report actual # of deaths when the # ranges from 1 - 9. In these cases the # of deaths is recorded on this graph as 5.

https://covid.cdc.gov/covid-data-tracker/#trends_weeklydeaths_select_00



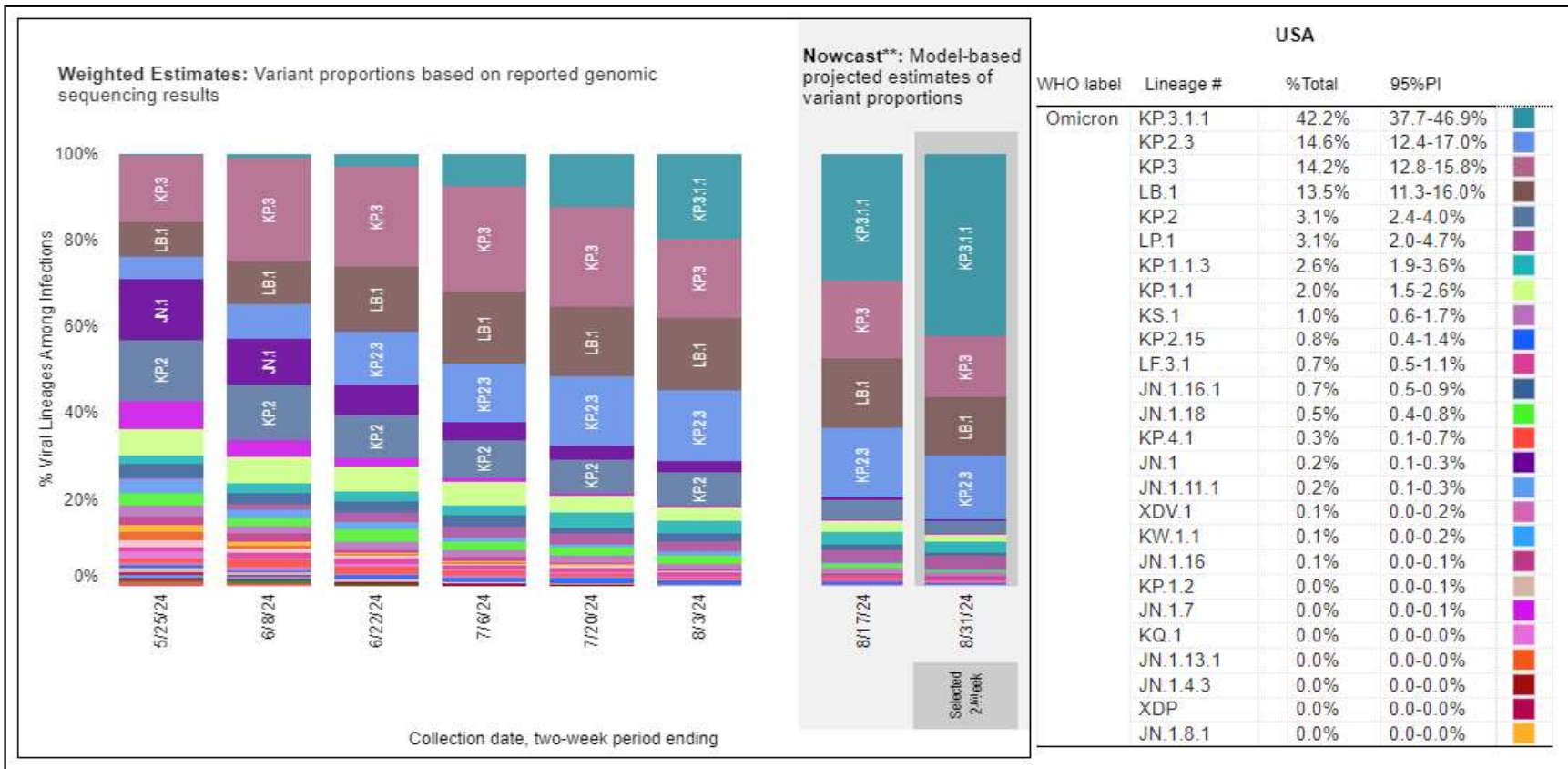
Now part of ADVOCATEHEALTH

% of Weekly Deaths Attributed to COVID-19; Week Ending 8/31/24





Most Prevalent SARS-CoV-2 Strains Circulating in the US thru 9/7/24 Data from CDC's Nowcast** Modelling

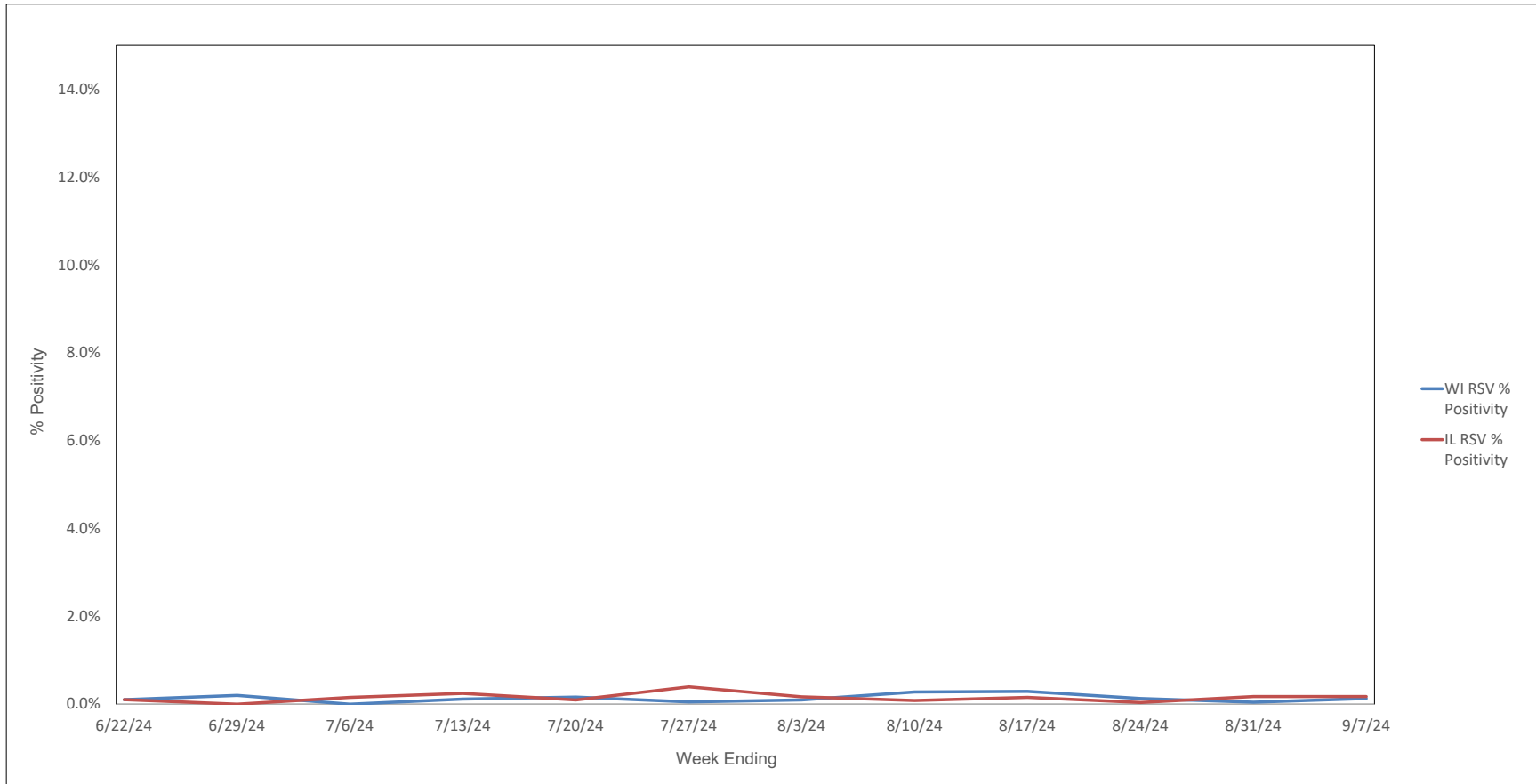


**CDC uses Nowcast model that estimates more recent proportions of circulating variants (actual sequencing data is typically delayed for 2 weeks).



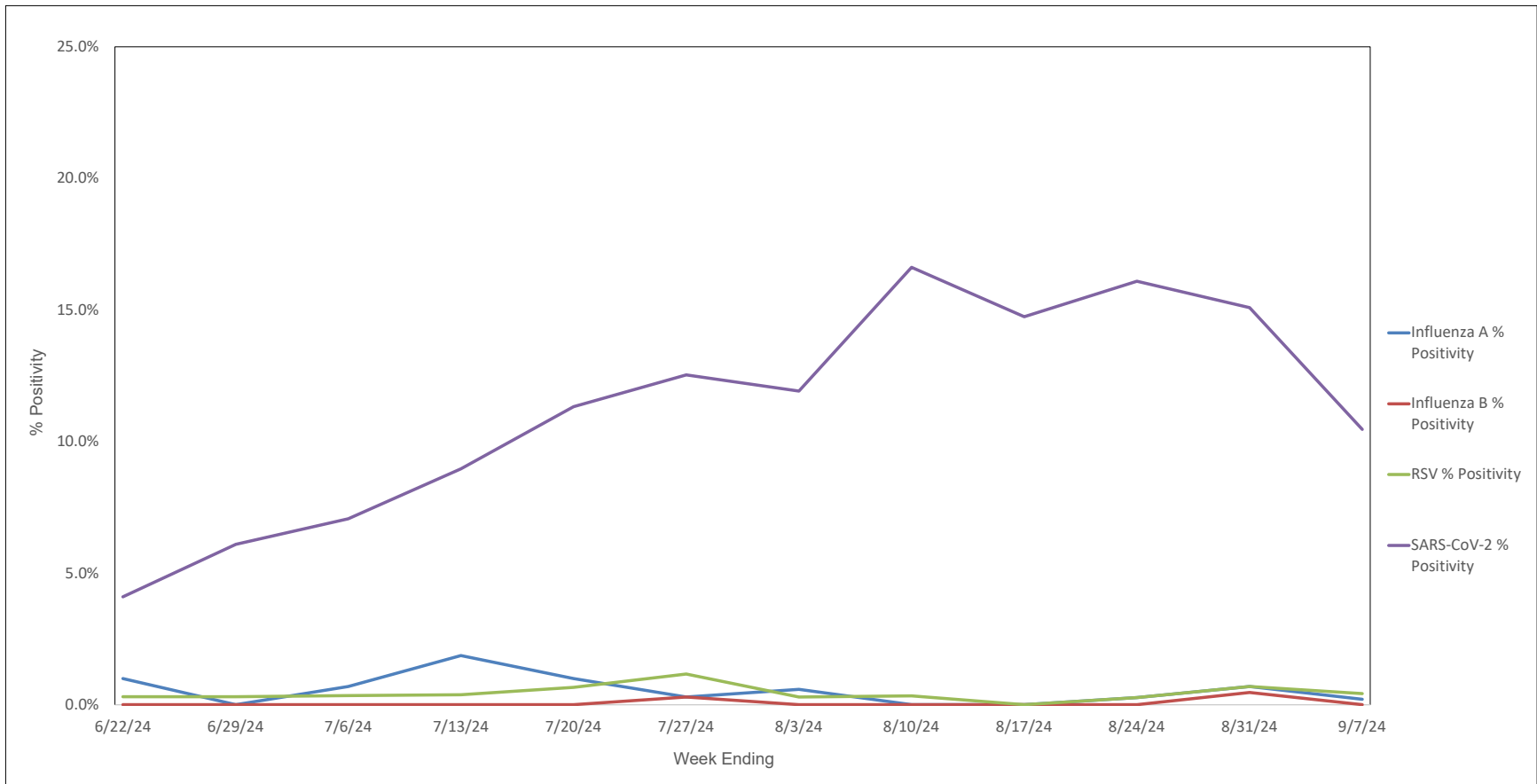
Now part of ADVOCATEHEALTH

Weekly RSV PCR % Positivity by State - 6/22/24 thru 9/7/24





Advocate Children's Hospital Influenza A, Influenza B, RSV, and SARS-CoV-2 PCR Positivity Rates - 6/22/24 thru 9/7/24





AAH WI Hospitals (patients < 18 yrs old) Influenza A, Influenza B, RSV, and SARS-CoV-2 PCR Positivity Rates - 6/22/24 thru 9/7/24

