

ACL Laboratories Respiratory Virus Activity Report

Updated 9/18/2024



Now part of  ADVOCATEHEALTH



Respiratory Pathogens Monthly % Positivity - Oct-23 thru Sep-24

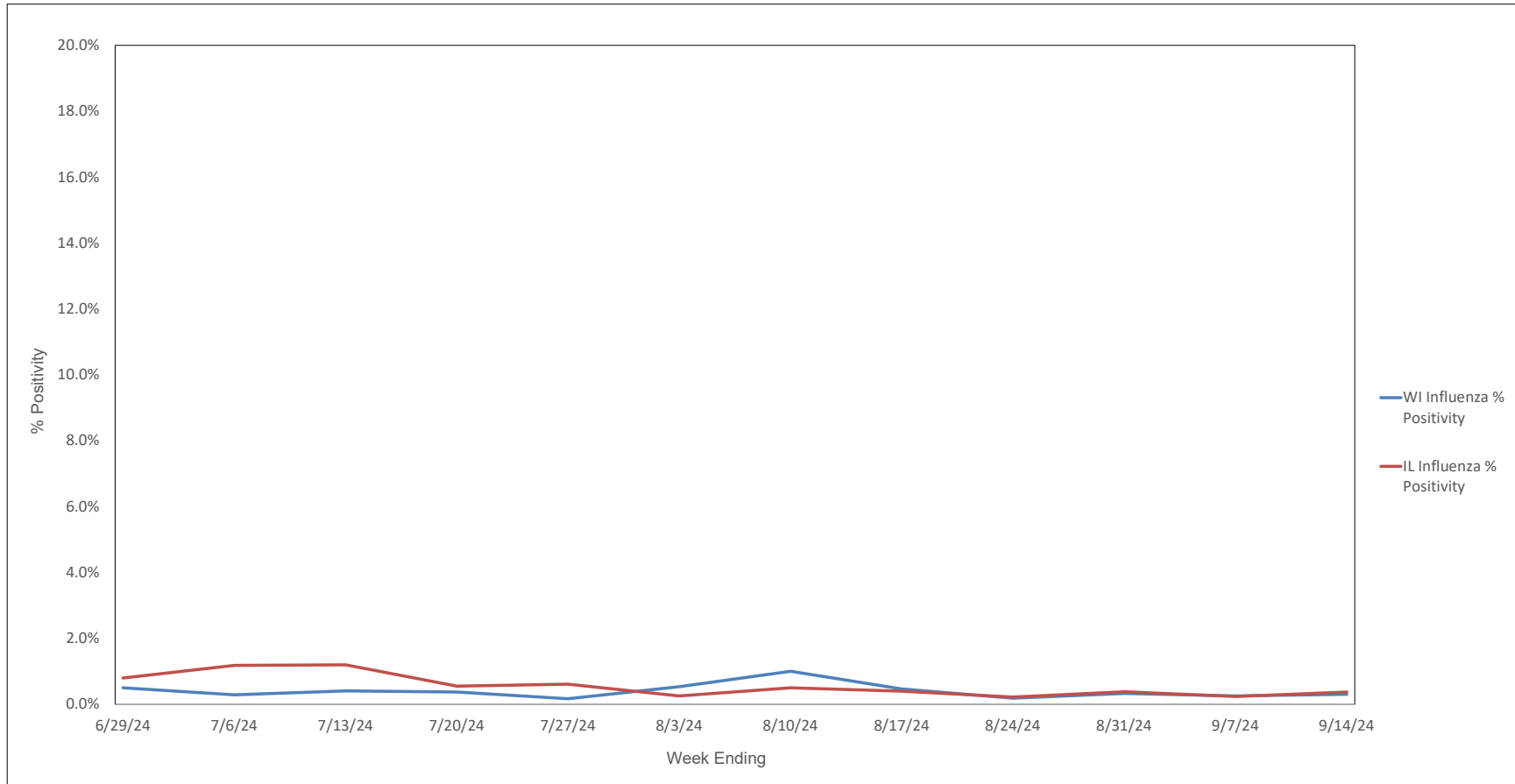
| MONTH - YEAR | Flu A % Positive | % Flu A H1N1 Subtype* | % Flu A 2009 H1N1 Subtype* | % Flu A H3N2 Subtype* | % Flu A No Subtype* | Flu B % Positive | RSV A/B % Positive | HPIV-1 % Positive | HPIV-2 % Positive | HPIV-3 % Positive | HPIV-4 % Positive | HCOV 229E % Positive | HCOV NL63 % Positive | HCOV OC43 % Positive | HCOV HKU1 % Positive | SARS-CoV-2 % Positive | HMPV % Positive | Rhinovirus / Enterovirus % Positive | Adenovirus % Positive | C. pneumoniae % Positive | M. pneumoniae % Positive | B. pertussis % Positive | B. parapertussis % Positive | L. pneumophila # Positive |
|--------------|------------------|-----------------------|----------------------------|-----------------------|---------------------|------------------|--------------------|-------------------|-------------------|-------------------|-------------------|----------------------|----------------------|----------------------|----------------------|-----------------------|-----------------|-------------------------------------|-----------------------|--------------------------|--------------------------|-------------------------|-----------------------------|---------------------------|
| Sep-24 | 0.2% | 0.0% | 100.0% | 0.0% | 0.0% | 0.0% | 0.2% | 0.2% | 0.1% | 0.7% | 1.6% | 0.1% | 0.7% | 0.1% | 0.0% | 12.2% | 0.3% | 25.8% | 1.5% | 0.2% | 3.7% | 0.4% | 0.0% | 1 |
| Aug-24 | 0.4% | 0.0% | 50.0% | 50.0% | 0.0% | 0.1% | 0.2% | 0.2% | 0.1% | 1.2% | 1.8% | 0.0% | 0.7% | 0.0% | 0.0% | 16.1% | 0.5% | 14.2% | 1.6% | 0.1% | 2.5% | 0.3% | 0.0% | 0 |
| Jul-24 | 0.5% | 0.0% | 33.3% | 50.0% | 16.7% | 0.0% | 0.1% | 0.2% | 0.0% | 4.1% | 1.3% | 0.2% | 0.9% | 0.1% | 0.0% | 13.1% | 1.3% | 13.4% | 1.8% | 0.0% | 1.3% | 0.4% | 0.0% | 0 |
| Jun-24 | 0.6% | 0.0% | 55.6% | 33.3% | 11.1% | 0.1% | 0.2% | 0.1% | 0.0% | 9.3% | 0.5% | 0.2% | 0.8% | 0.1% | 0.0% | 5.9% | 4.0% | 16.5% | 2.6% | 0.0% | 0.5% | 0.4% | 0.0% | 0 |
| May-24 | 0.8% | 0.0% | 50.0% | 50.0% | 0.0% | 0.8% | 0.5% | 0.1% | 0.0% | 8.3% | 0.3% | 0.5% | 0.6% | 0.3% | 0.2% | 2.7% | 7.0% | 15.5% | 2.4% | 0.0% | 0.3% | 0.1% | 0.0% | 1 |
| Apr-24 | 2.8% | 0.0% | 56.0% | 44.0% | 0.0% | 4.6% | 1.0% | 0.0% | 0.0% | 5.6% | 0.1% | 1.1% | 0.8% | 1.2% | 0.3% | 3.1% | 9.5% | 13.6% | 3.1% | 0.0% | 0.3% | 0.0% | 0.0% | 0 |
| Mar-24 | 5.8% | 0.0% | 73.8% | 26.2% | 0.0% | 9.4% | 1.8% | 0.0% | 0.0% | 1.9% | 0.1% | 1.4% | 0.7% | 2.1% | 1.5% | 4.3% | 7.9% | 12.6% | 3.2% | 0.0% | 0.0% | 0.0% | 0.0% | 0 |
| Feb-24 | 8.4% | 0.0% | 72.5% | 27.5% | 0.0% | 6.0% | 0.5% | 0.0% | 0.0% | 0.5% | 0.1% | 1.3% | 0.2% | 4.8% | 1.5% | 8.7% | 3.0% | 12.7% | 4.1% | 0.0% | 0.2% | 0.1% | 0.0% | 0 |
| Jan-24 | 11.0% | 0.0% | 78.5% | 21.5% | 0.0% | 1.6% | 7.1% | 0.2% | 0.1% | 0.4% | 0.2% | 0.4% | 0.0% | 3.4% | 0.4% | 10.5% | 1.2% | 7.1% | 5.2% | 0.0% | 0.4% | 0.2% | 0.1% | 0 |
| Dec-23 | 11.2% | 0.0% | 70.1% | 29.9% | 0.0% | 0.8% | 10.3% | 0.9% | 0.3% | 0.0% | 0.5% | 0.2% | 0.1% | 2.7% | 0.4% | 14.4% | 0.8% | 12.7% | 5.6% | 0.0% | 0.6% | 0.0% | 0.0% | 0 |
| Nov-23 | 2.6% | 0.0% | 50.0% | 50.0% | 0.0% | 0.3% | 10.2% | 1.6% | 0.6% | 0.4% | 0.9% | 0.0% | 0.0% | 0.4% | 0.1% | 12.5% | 0.4% | 16.8% | 5.7% | 0.0% | 0.5% | 0.0% | 0.3% | 0 |
| Oct-23 | 0.6% | 0.0% | 100.0% | 0.0% | 0.0% | 0.1% | 4.0% | 2.4% | 0.8% | 0.3% | 1.0% | 0.1% | 0.1% | 0.2% | 0.0% | 8.9% | 0.5% | 19.1% | 2.6% | 0.0% | 0.4% | 0.0% | 0.0% | 0 |

* Represents the % of Influenza A positive samples that are positive for each subtype; subtyping is not performed on all Influenza A specimens (only those specimens tested with the Rapid Respiratory Pathogen Panel)
 Flu A = Influenza Type A, Flu B = Influenza Type B, RSV A/B = Respiratory Syncytial Virus Type A/B (not differentiated), HPIV = Human Parainfluenza Virus, HCOV = Human Coronavirus, HMPV = Human Metapneumovirus



Now part of ADVOCATEHEALTH

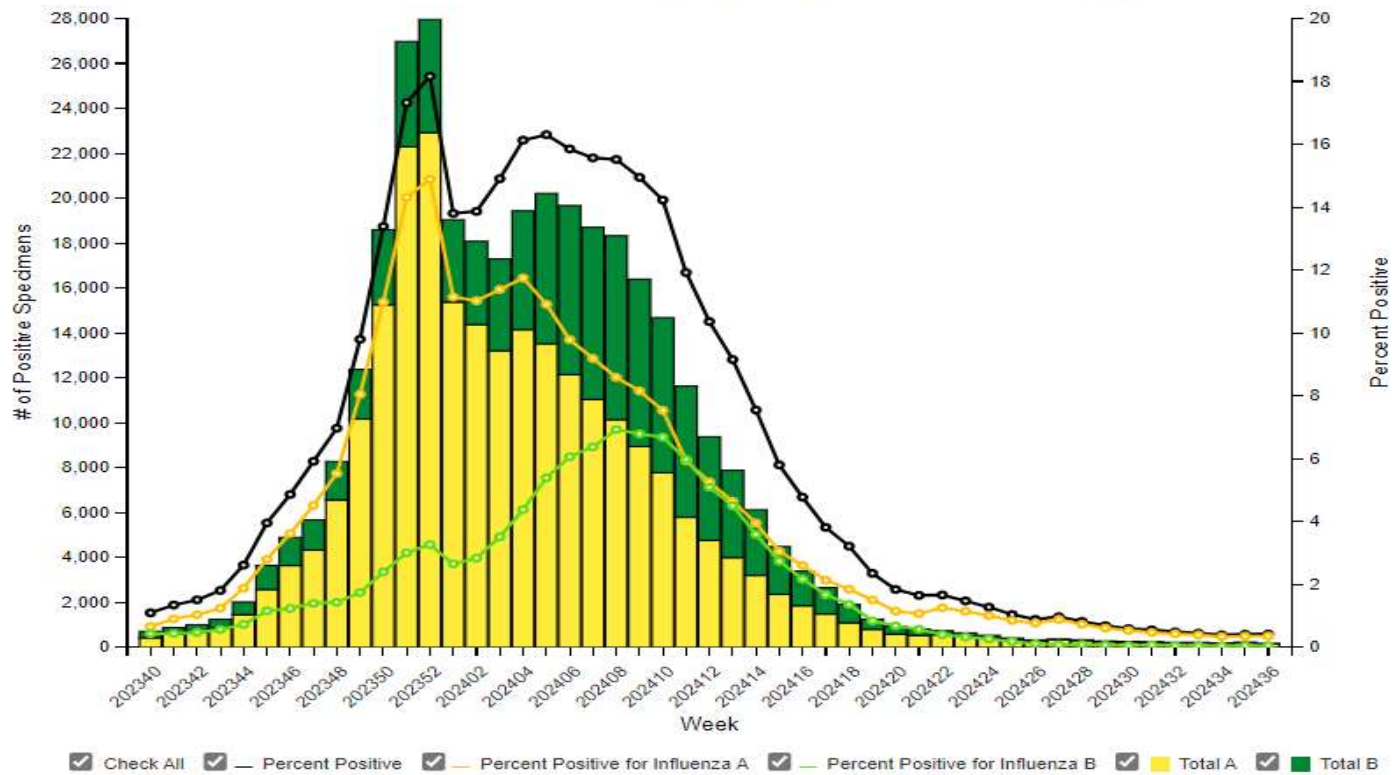
Weekly Influenza PCR % Positivity by State - 6/29/24 thru 9/14/24





National Influenza Positivity Rates (Data from CDC)

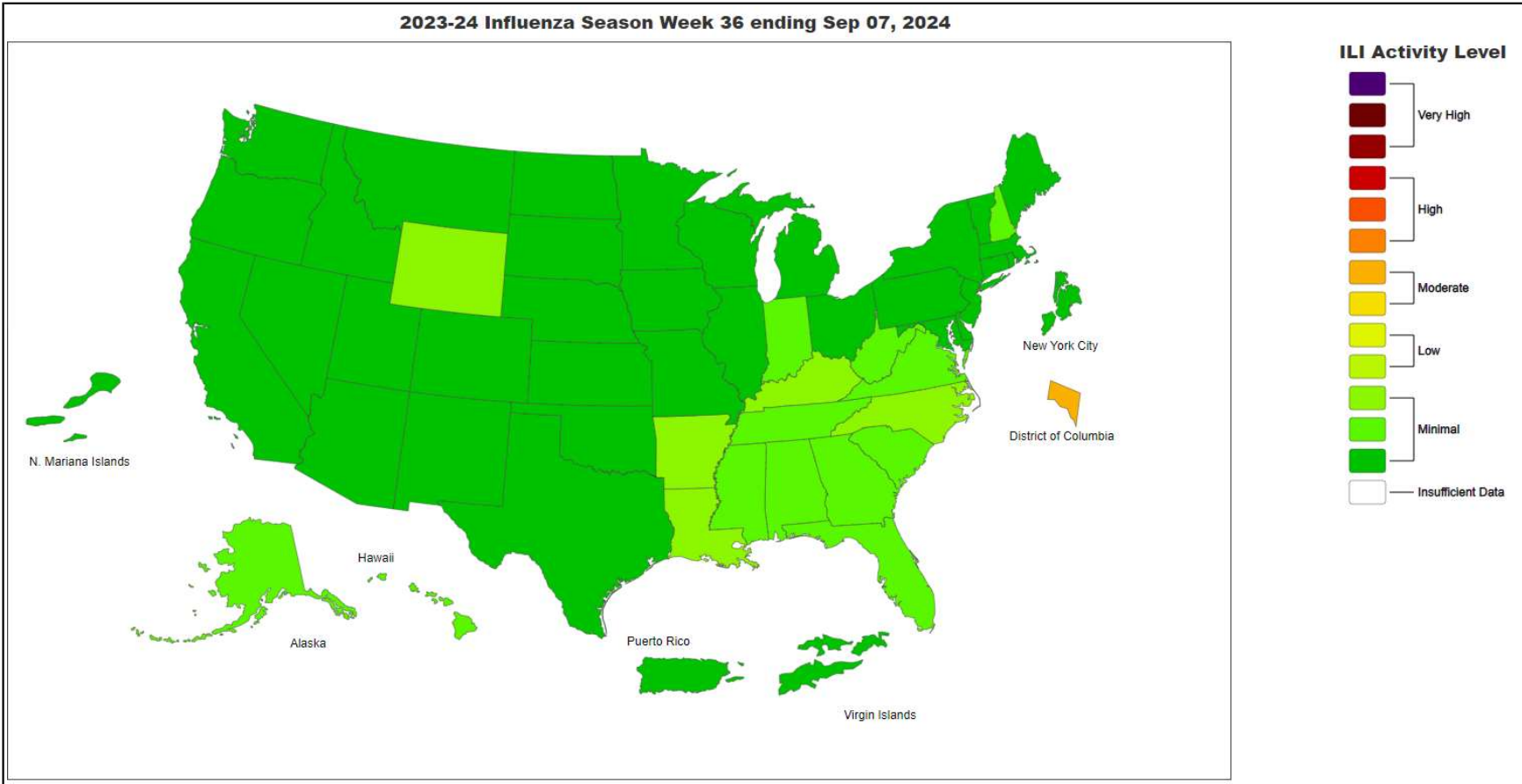
Influenza Positive Tests Reported to CDC by Clinical Laboratories, National Summary, 2023-24 Season, week ending Sep 07, 2024





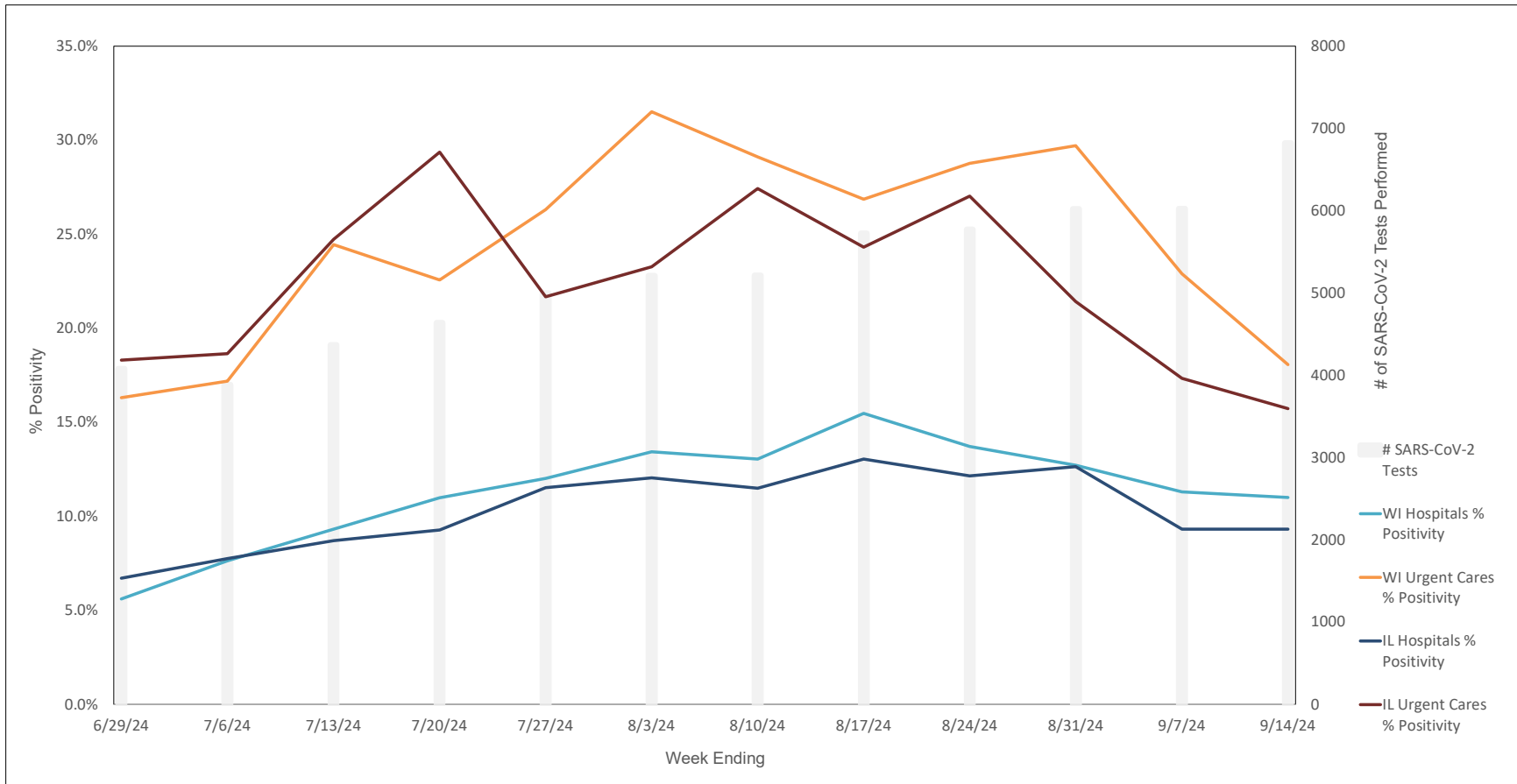
National Influenza Positivity Rates (Data from CDC)

2023-24 Influenza Season Week 36 ending Sep 07, 2024





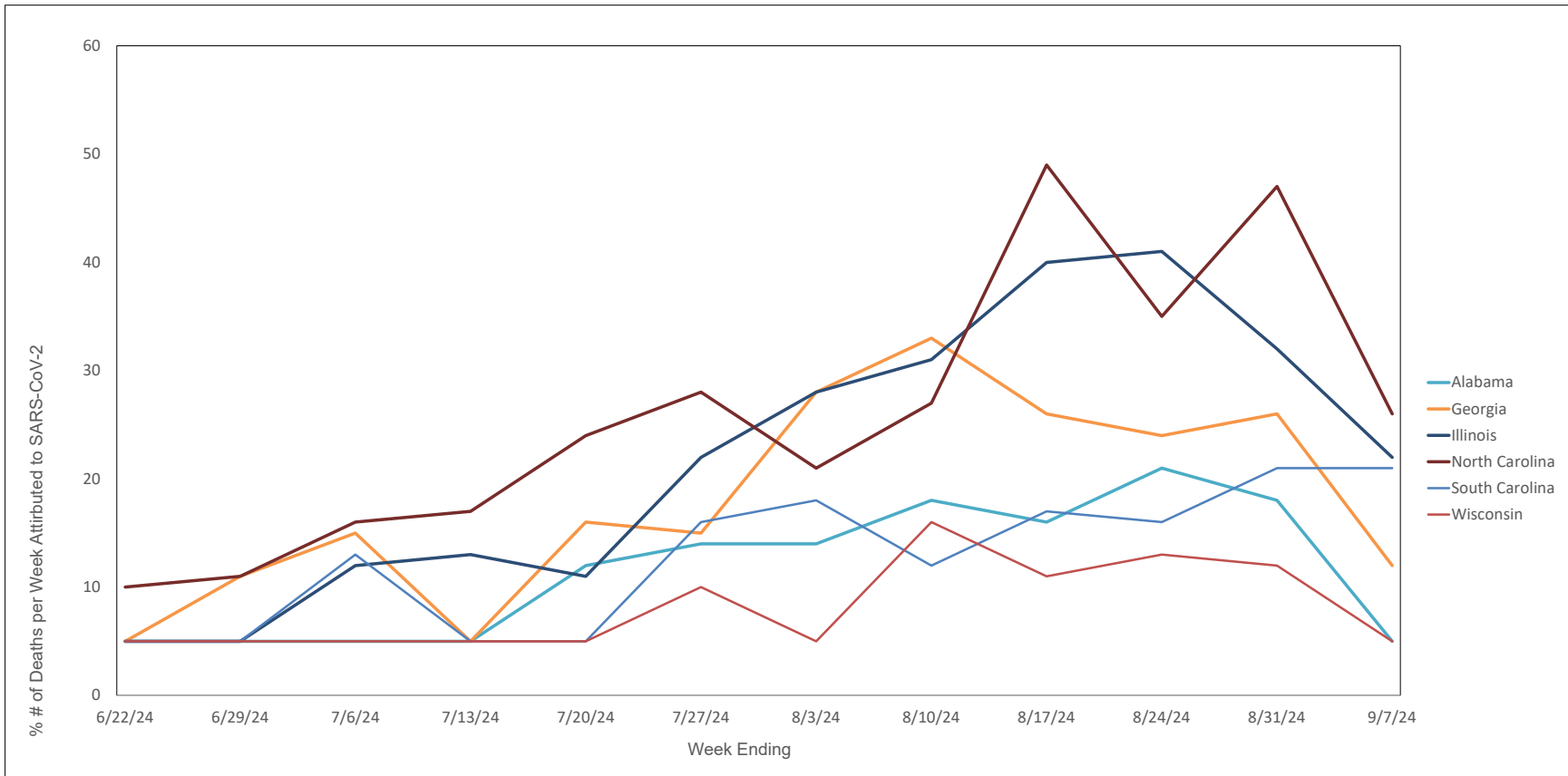
Weekly SARS-CoV-2 PCR % Positivity Rate - 6/29/24 thru 9/14/24





Now part of ADVOCATEHEALTH

Weekly Deaths Attributed to SARS-CoV-2 by State - 6/22/24 thru 9/7/24

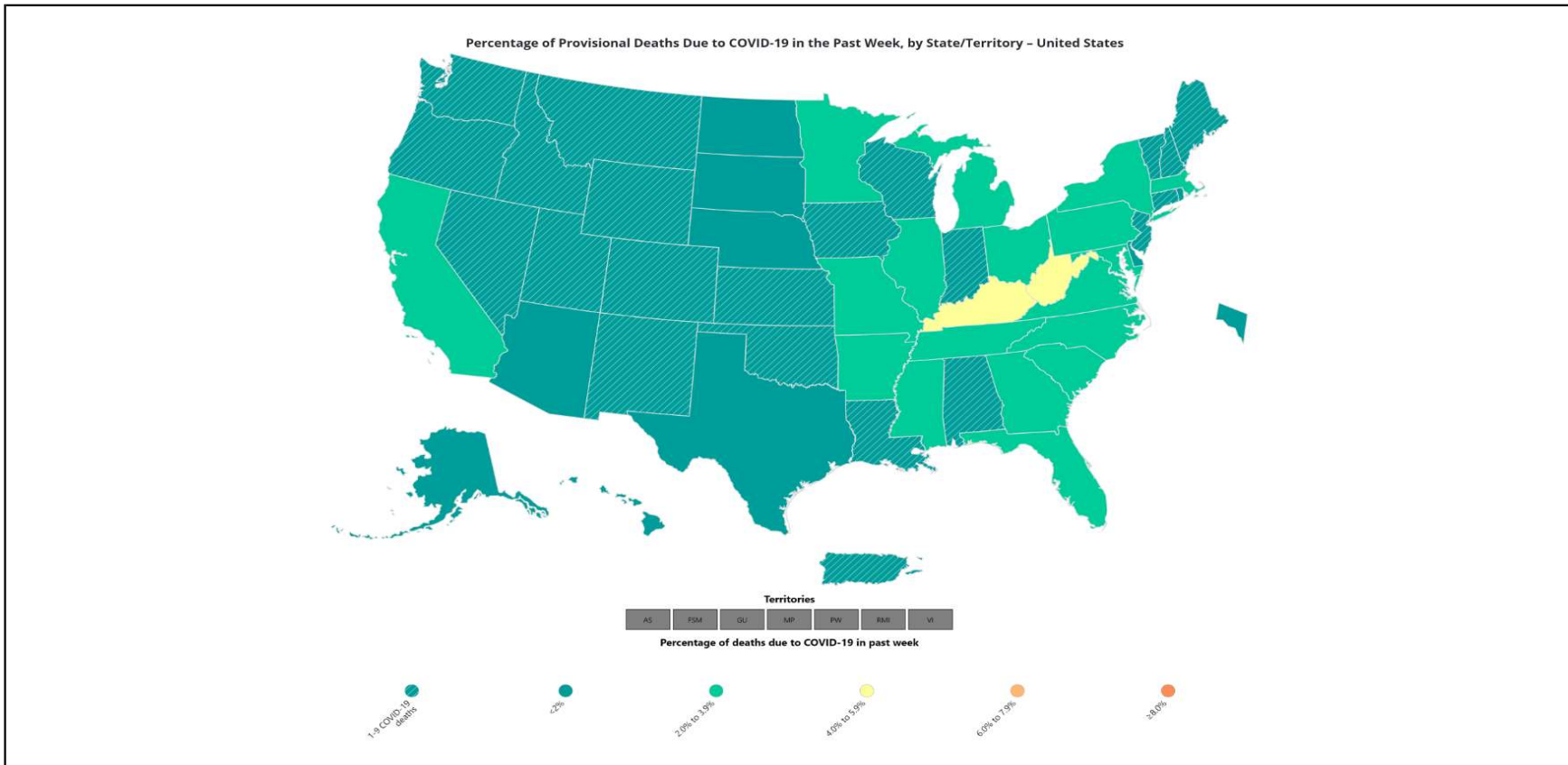


States do not report actual # of deaths when the # ranges from 1 - 9. In these cases the # of deaths is recorded on this graph as 5.



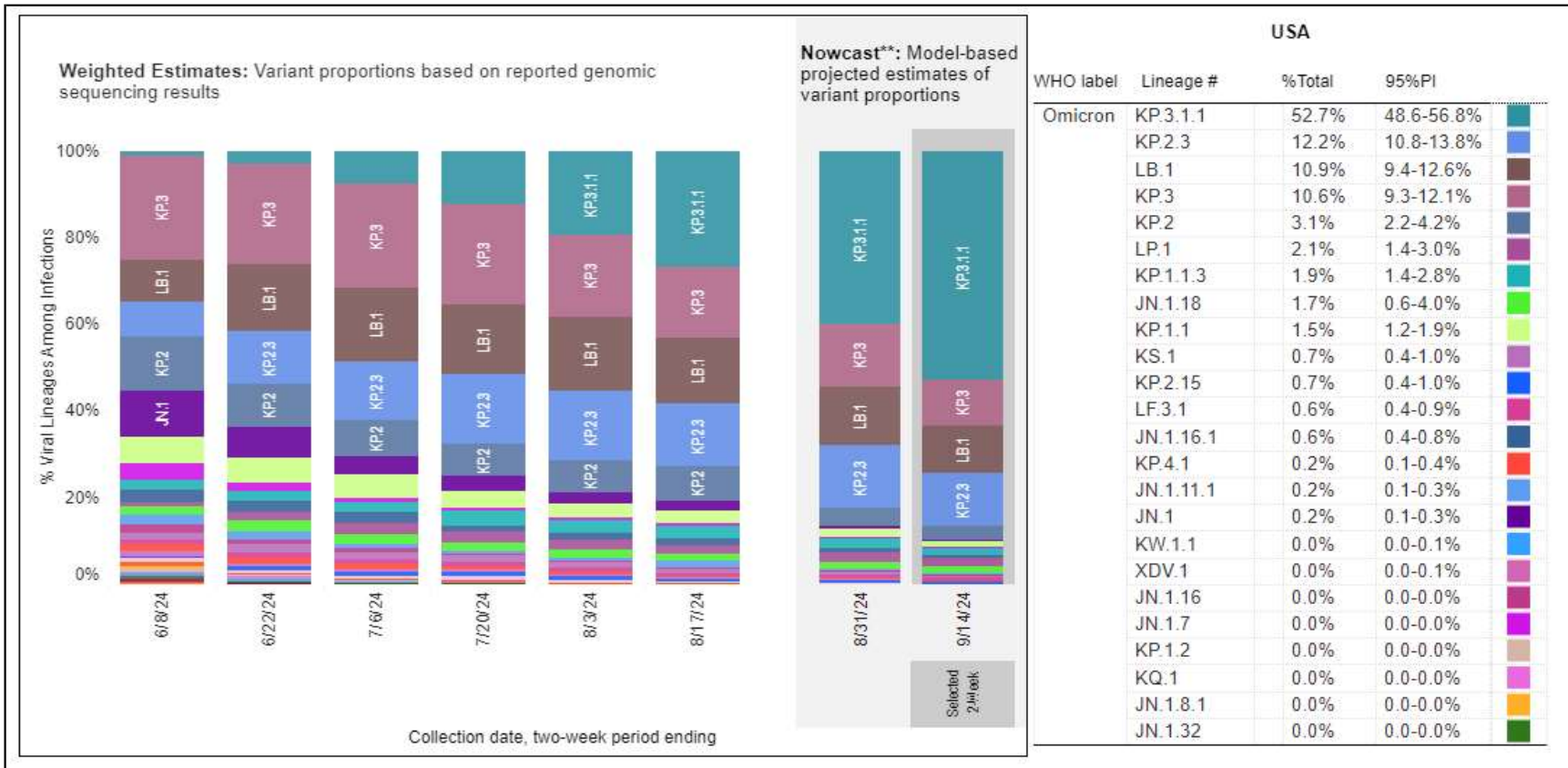
Now part of ADVOCATEHEALTH

% of Weekly Deaths Attributed to COVID-19; Week Ending 9/7/24





Most Prevalent SARS-CoV-2 Strains Circulating in the US thru 9/14/24 Data from CDC's Nowcast** Modelling

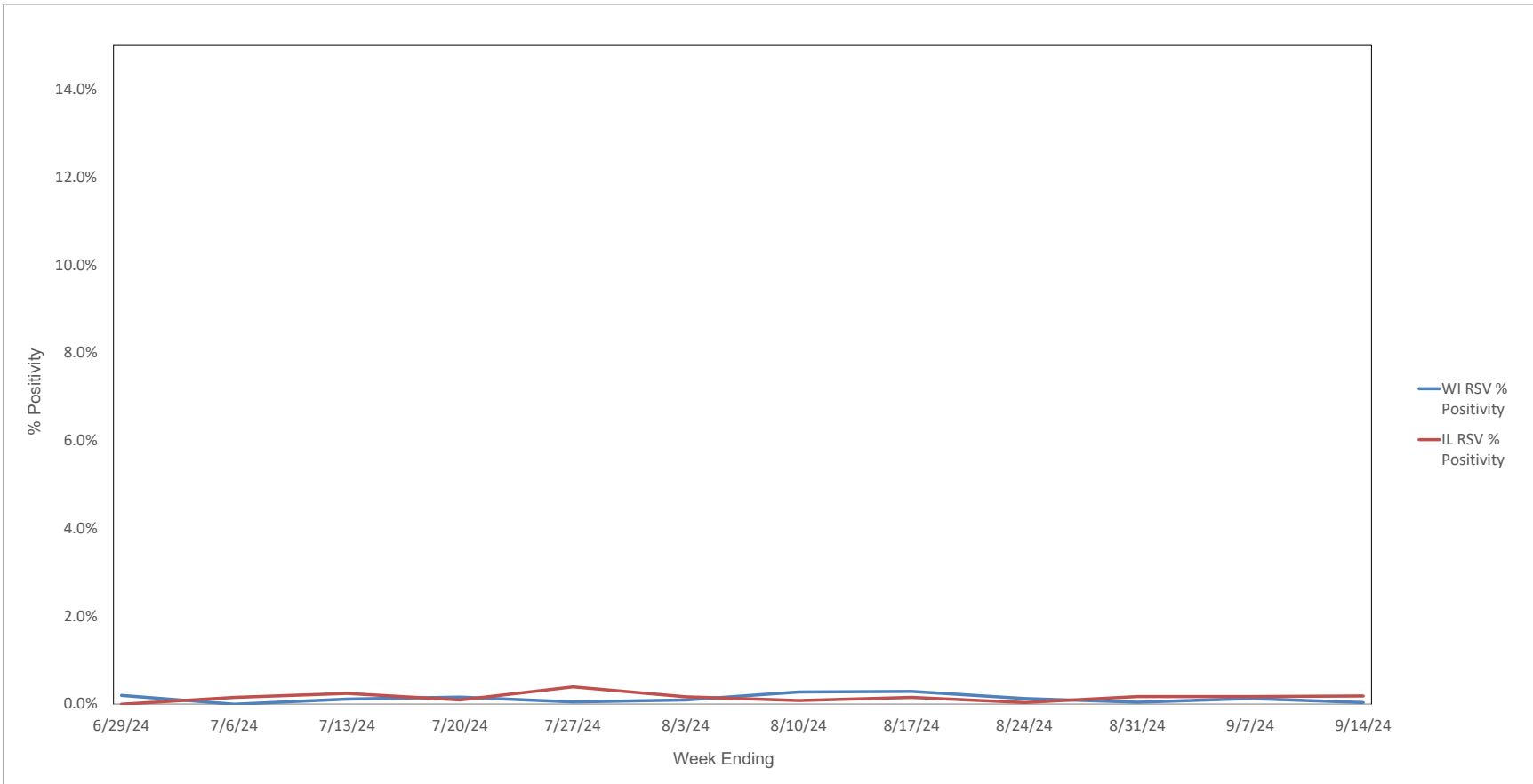


**CDC uses Nowcast model that estimates more recent proportions of circulating variants (actual sequencing data is typically delayed for 2 weeks).



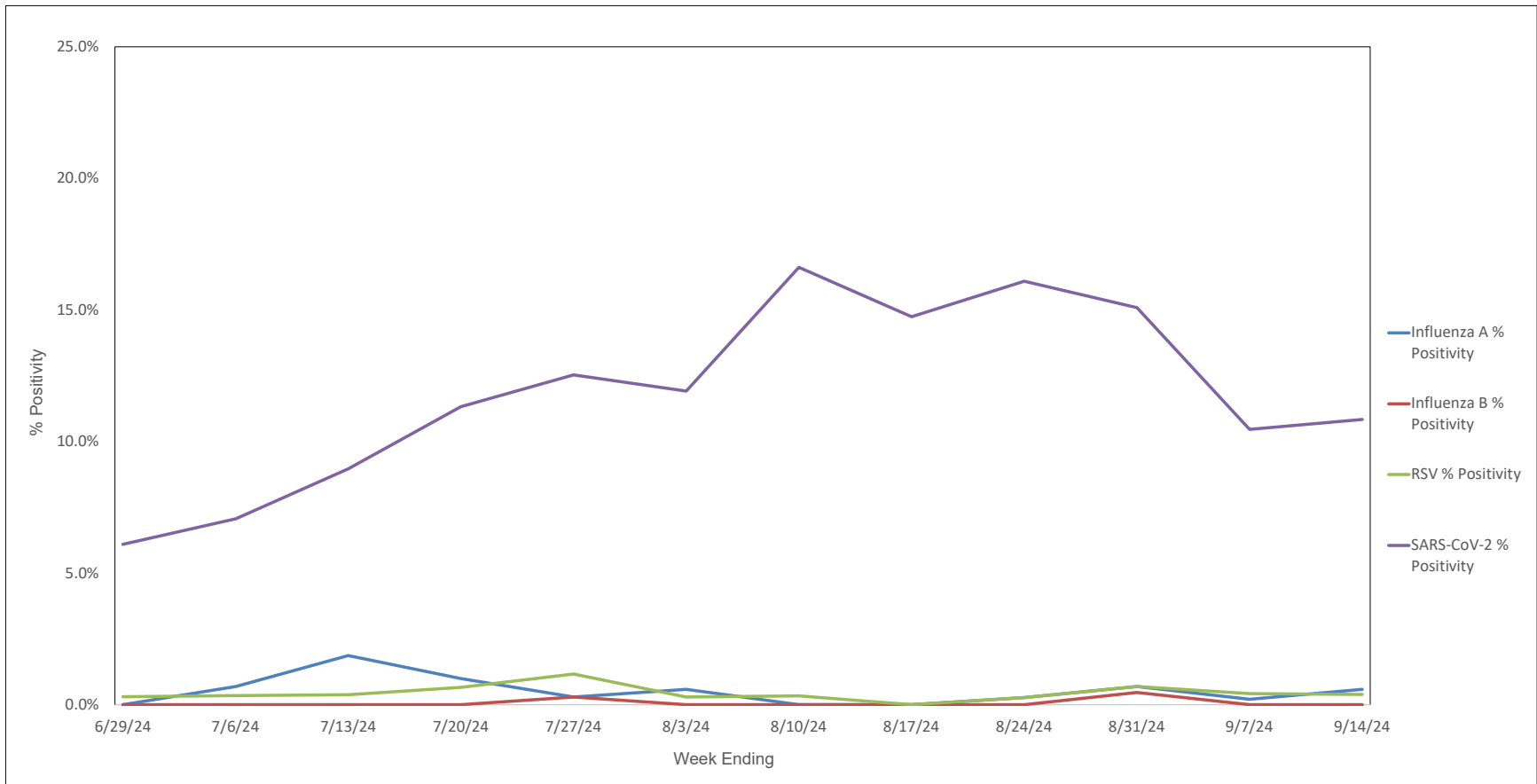
Now part of ADVOCATEHEALTH

Weekly RSV PCR % Positivity by State - 6/29/24 thru 9/14/24





Advocate Children's Hospital Influenza A, Influenza B, RSV, and SARS-CoV-2 PCR Positivity Rates - 6/29/24 thru 9/14/24





AAH WI Hospitals (patients < 18 yrs old) Influenza A, Influenza B, RSV, and SARS-CoV-2 PCR Positivity Rates - 6/29/24 thru 9/14/24

