

# ACL Laboratories Respiratory Virus and Monkeypox Virus Activity Report

Updated: September 28, 2022

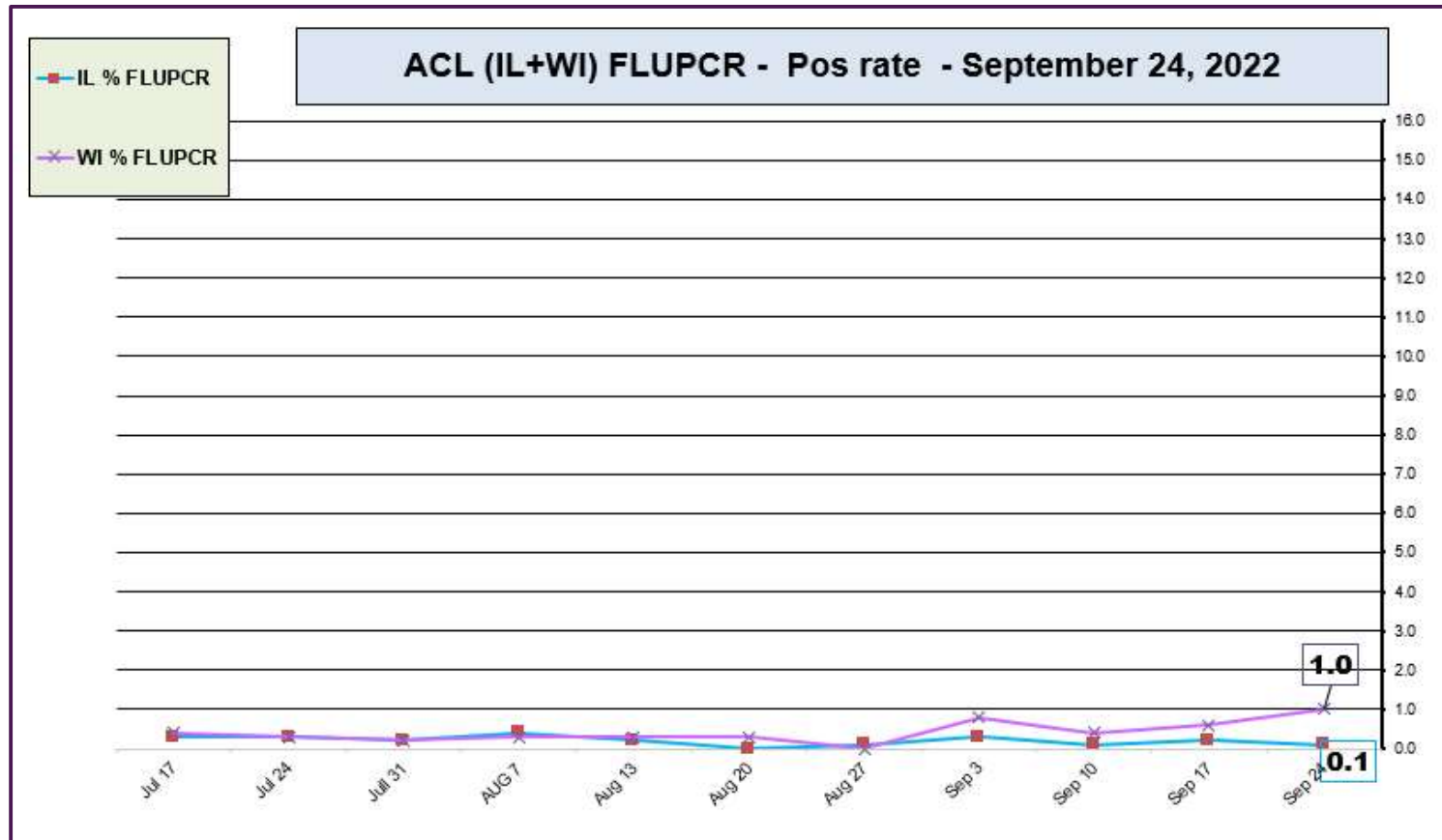


## RESPIRATORY PATHOGEN PANEL OCTOBER 2021- SEPTEMBER 28, 2022 Positivity Rate (%)

MONTH	FLU A UnSub	FLU A (H1N1)	2009 H1N1	FLU A H3N2	FLU B	RSV A/B	PARA 1	PARA 2	PARA 3	PARA 4	COR 229E	COR NL63	COR OC43	COR HKU1	META	ENTERO/RHINO	Adeno	BOCA	Legio-nella	Chla-mydia	Mycoplasm
SEP 2022	0.0	0.0	0.0	0.0	0.0	3.5	0.7	0.0	0.4	2.3	0.1	0.1	0.1	0.0	0.3	23.7	0.7	0.8	0.2	0.0	0.0
AUG 2022	0.0	0.0	0.0	0.1	0.0	1.6	0.7	0.0	0.8	1.1	0.2	0.0	0.0	0.0	0.5	15.2	2.0	2.1	0.2	0.0	0.0
JUL 2022	0.0	0.0	0.0	0.1	0.0	1.7	0.2	0.1	3.3	0.7	0.0	0.1	0.3	0.2	1.6	9.7	2.1	0.7	0.0	0.0	0.0
JUN 2022	0.0	0.0	0.0	0.4	0.0	1.8	0.5	0.2	9.5	1.0	0.0	0.2	0.5	0.1	3.6	12.6	1.7	0.5	0.2	0.0	0.0
MAY 2022	0.0	0.0	0.0	1.4	0.0	0.6	0.0	0.2	7.3	0.7	1.2	0.9	2.4	0.2	6.7	11.1	1.8	0.7	0.0	0.0	0.0
APR 2022	0.0	0.0	0.0	2.1	0.0	0.9	0.0	0.0	2.6	0.1	2.1	1.1	3.4	0.2	10.5	9.4	1.3	0.7	0.0	0.0	0.0
MAR 2022	0.0	0.0	0.0	1.6	0.0	0.8	0.0	0.1	1.1	0.2	1.3	0.6	4.4	0.1	6.9	11.7	2.6	1.2	0.0	0.0	0.0
FEB 2022	0.0	0.0	0.0	1.3	0.0	1.4	0.0	0.0	0.0	0.2	0.7	0.0	2.1	0.0	4.8	8.0	1.9	3.2	0.0	0.0	0.0
JAN 2022	0.0	0.0	0.0	1.3	0.0	1.6	0.0	0.5	0.6	0.5	0.6	0.0	1.2	0.0	3.9	4.6	1.3	1.8	6.2	0.0	0.0
DEC 2021	0.0	0.0	0.0	2.7	0.0	4.4	0.0	0.8	1.4	1.4	0.4	0.1	1.6	0.2	2.7	11.4	2.3	4.4	0.0	0.0	0.0
NOV 2021	0.0	0.1	0.1	0.7	0.0	7.6	0.1	1.5	0.9	1.5	0.2	0.1	0.9	0.0	1.0	18.3	1.4	3.7	0.1	0.0	0.0
OCT 2021	0.0	0.0	0.0	0.0	0.0	7.8	0.0	1.6	1.2	1.0	0.1	0.0	0.4	0.0	0.3	21.0	1.2	4.0	0.2	0.0	0.0

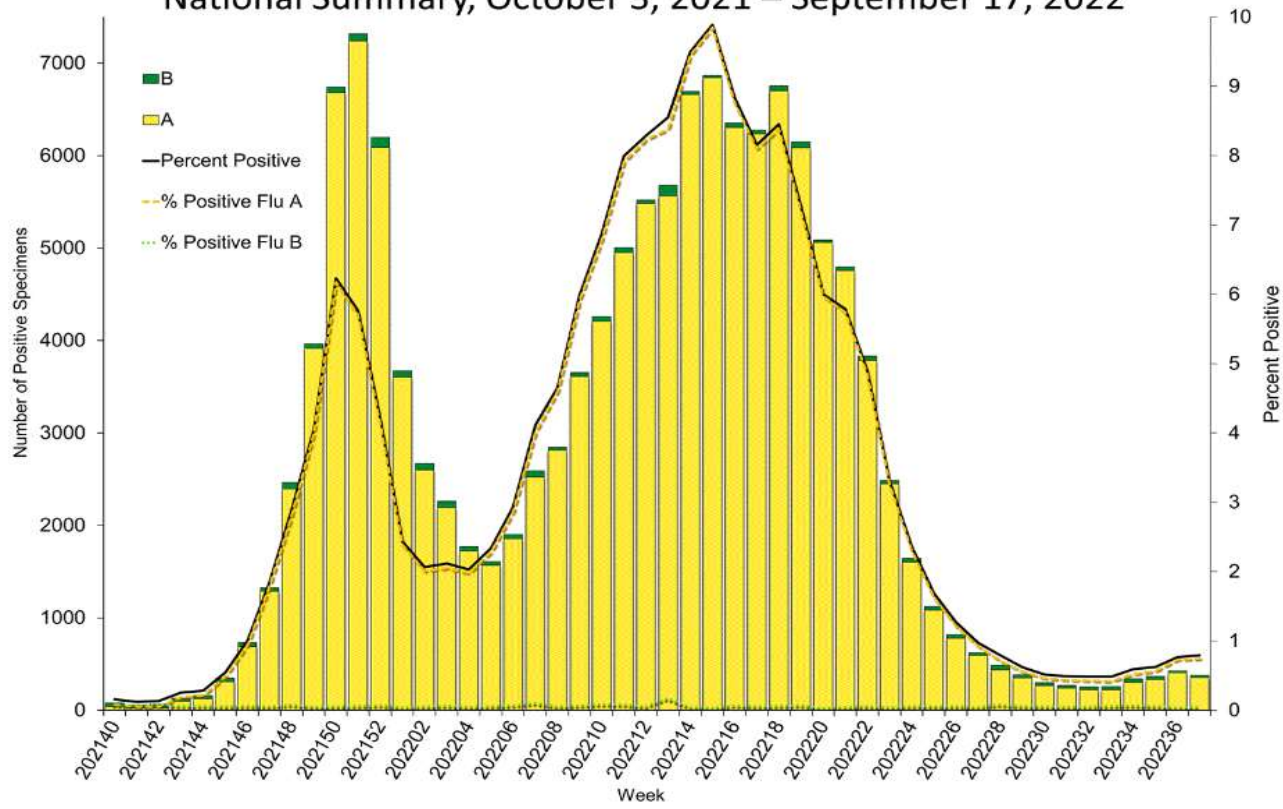
Data generated using: RPPNL (LAB9955)

## ACL INFLUENZA positivity rate (Jul 17, 2022 – September 24, 2022)

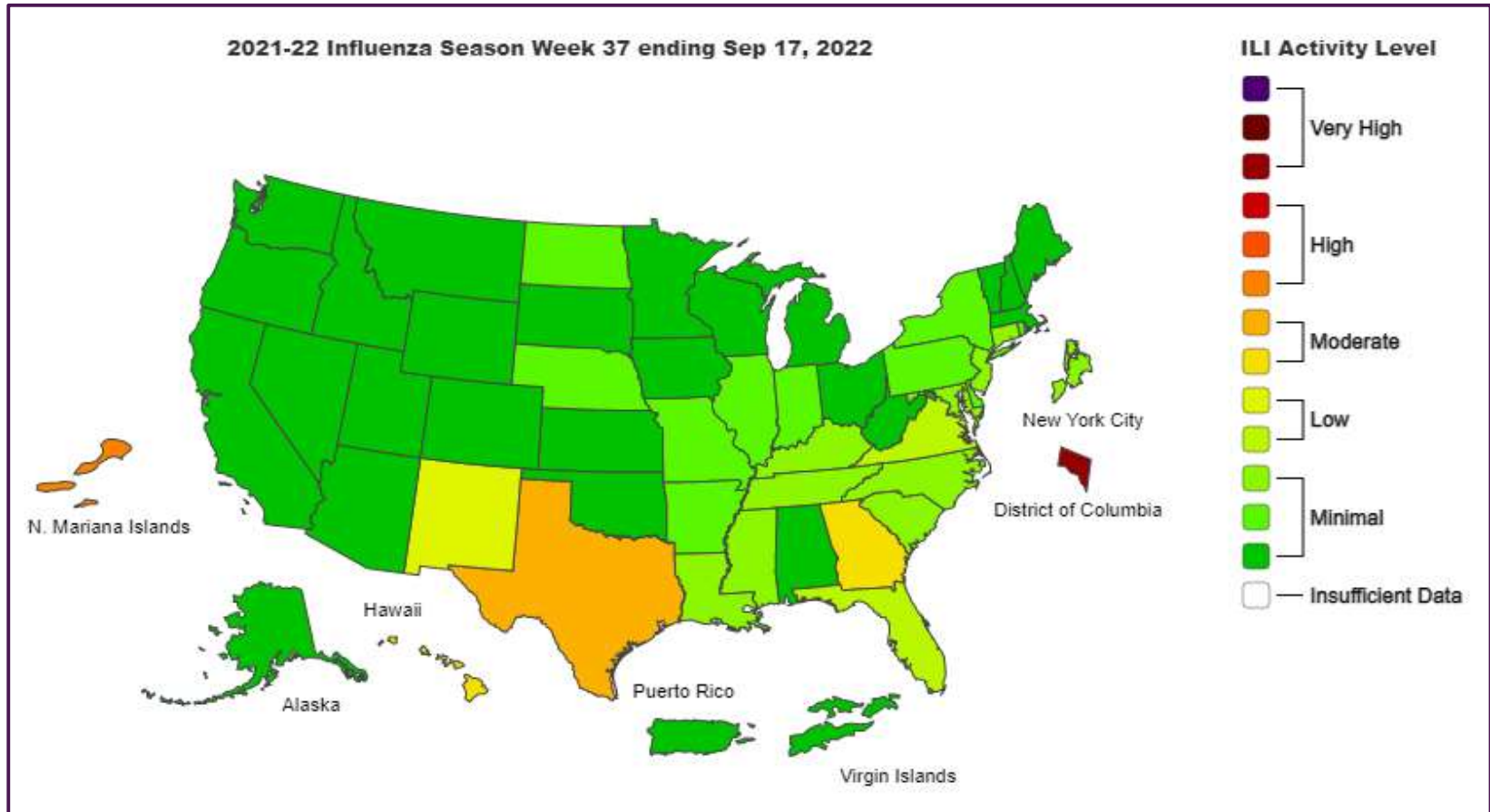


Data generated using: Respiratory Pathogen Panel (LAB9955), Influenza PCR, COVID/FLU/RSV Panel (LAB10789), COVID/Flu by PCR (LAB10889), and SARS-CoV-2/Influenza by PCR (LAB11071)

### Influenza Positive Tests Reported to CDC by U.S. Clinical Laboratories, National Summary, October 3, 2021 – September 17, 2022

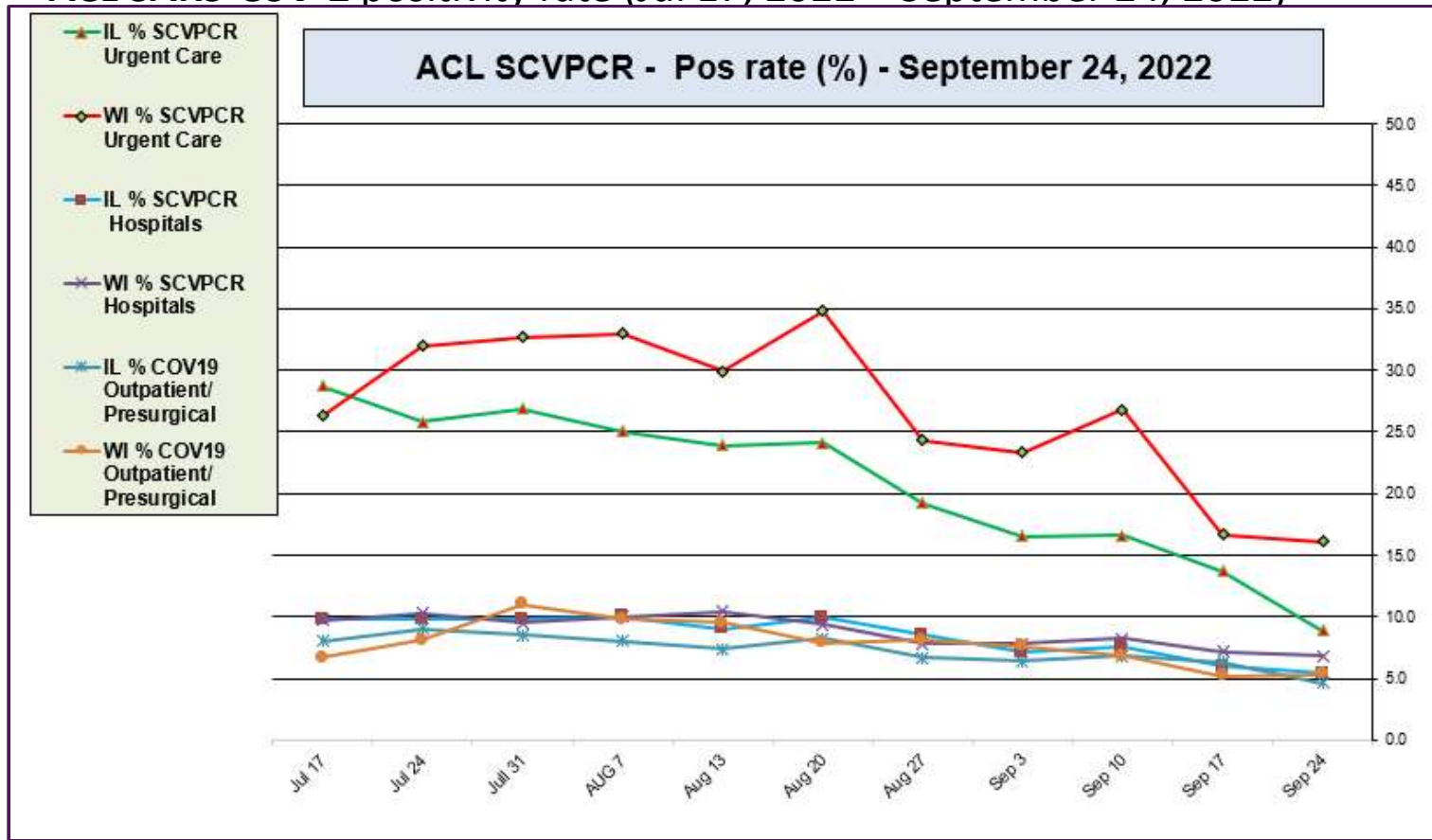


<https://www.cdc.gov/>



<https://www.cdc.gov/>

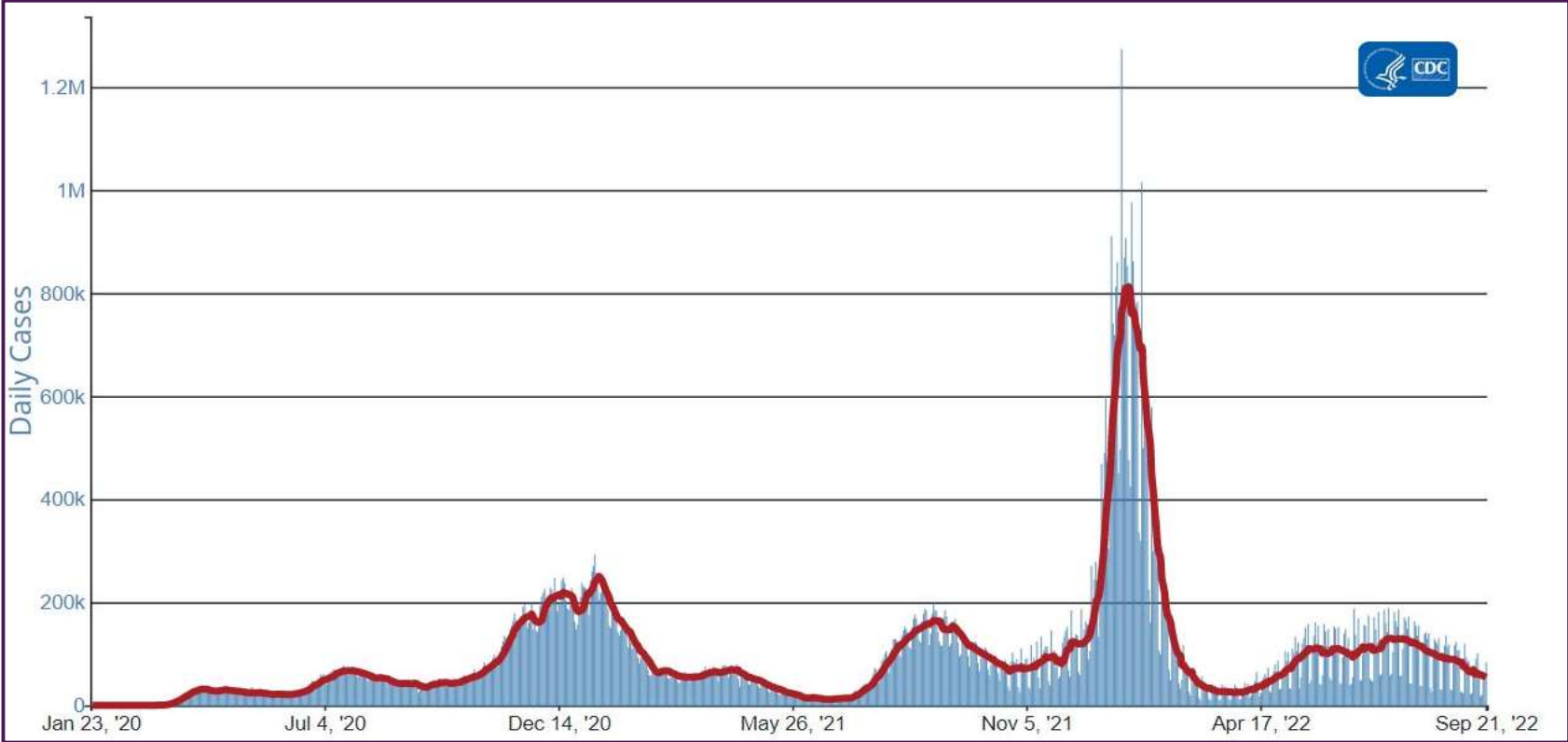
## ACL SARS-CoV-2 positivity rate (Jul 17, 2022 – September 24, 2022)



Data generated using: RAPID SARS-COV-2 BY PCR (LAB10644), COVID/FLU/RSV Panel (LAB10789), prior to 9/17 COVID-19 ANTIGEN TEST (SOFIA) (LAB10715), post 9/17 LAB10644 performed at WI and IL urgent cares sites



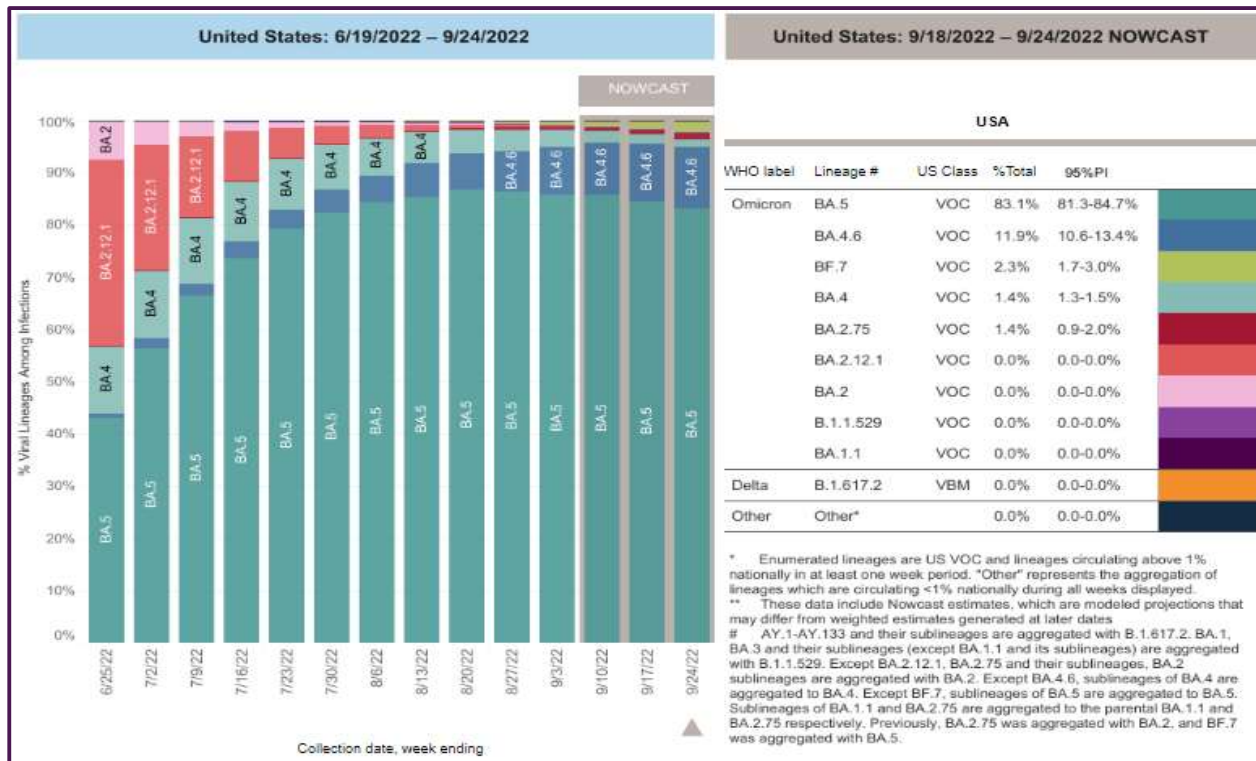
# CDC- Daily COVID-19 cases in US – Jan 23 – September 21, 2022



CDC SARS-CoV-2 positivity rate

<https://www.cdc.gov/>

**September 24, 2022 – SARS-CoV-2 circulating in the Midwest based on projection by Nowcast modeling**  
**(Omicron BA.4 – 1.4% ↓, BA.5 – 83.1% ↓, BA.4.6 – 11.9% ↑, BA.2.75 – 1.4% ↑, BF.7 – 2.3% ↑)**

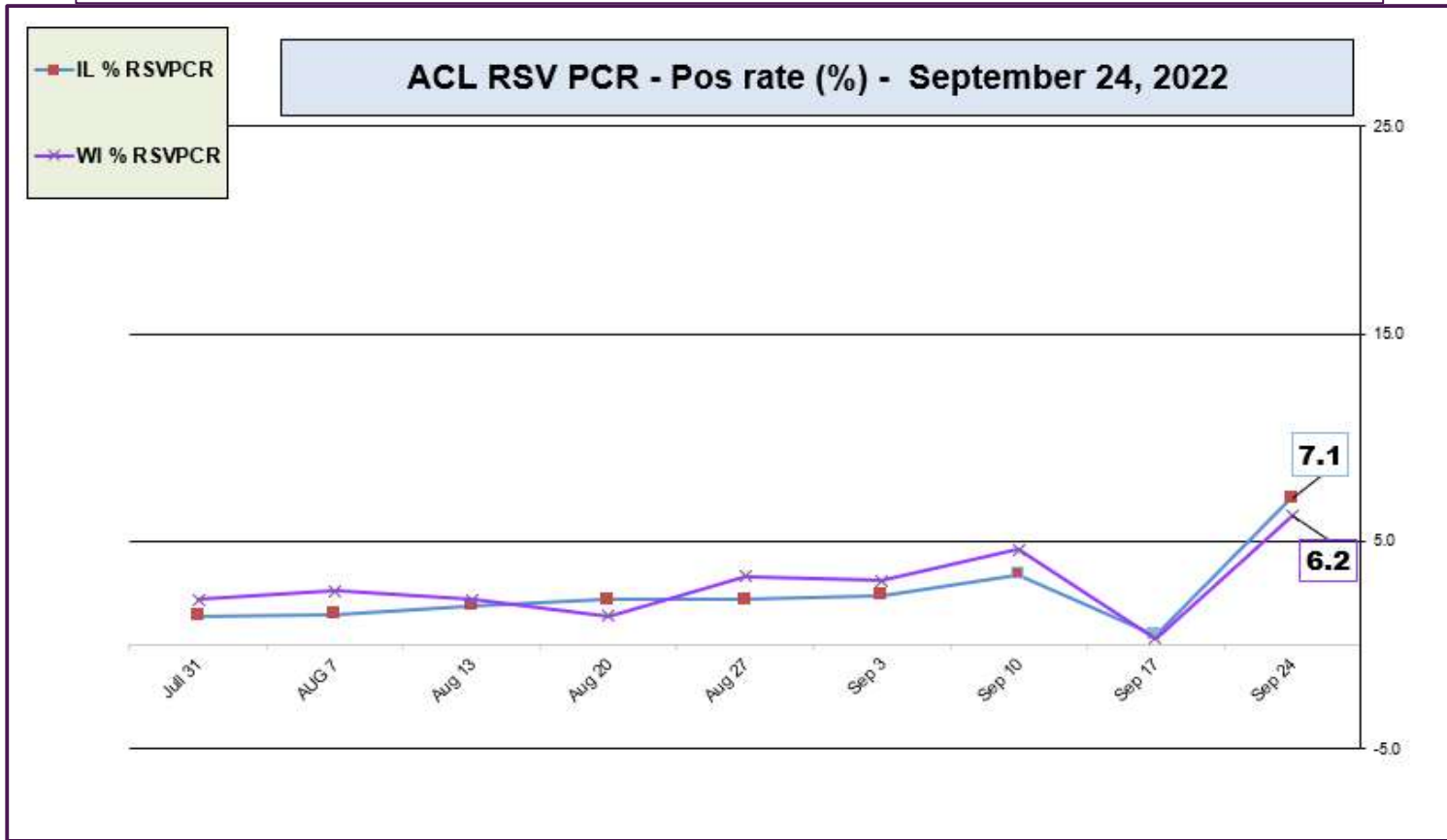


\*\* CDC uses Nowcast model that estimates more recent proportions of circulating variants (actual sequencing data is typically delayed for 2 weeks).

<https://www.cdc.gov/>

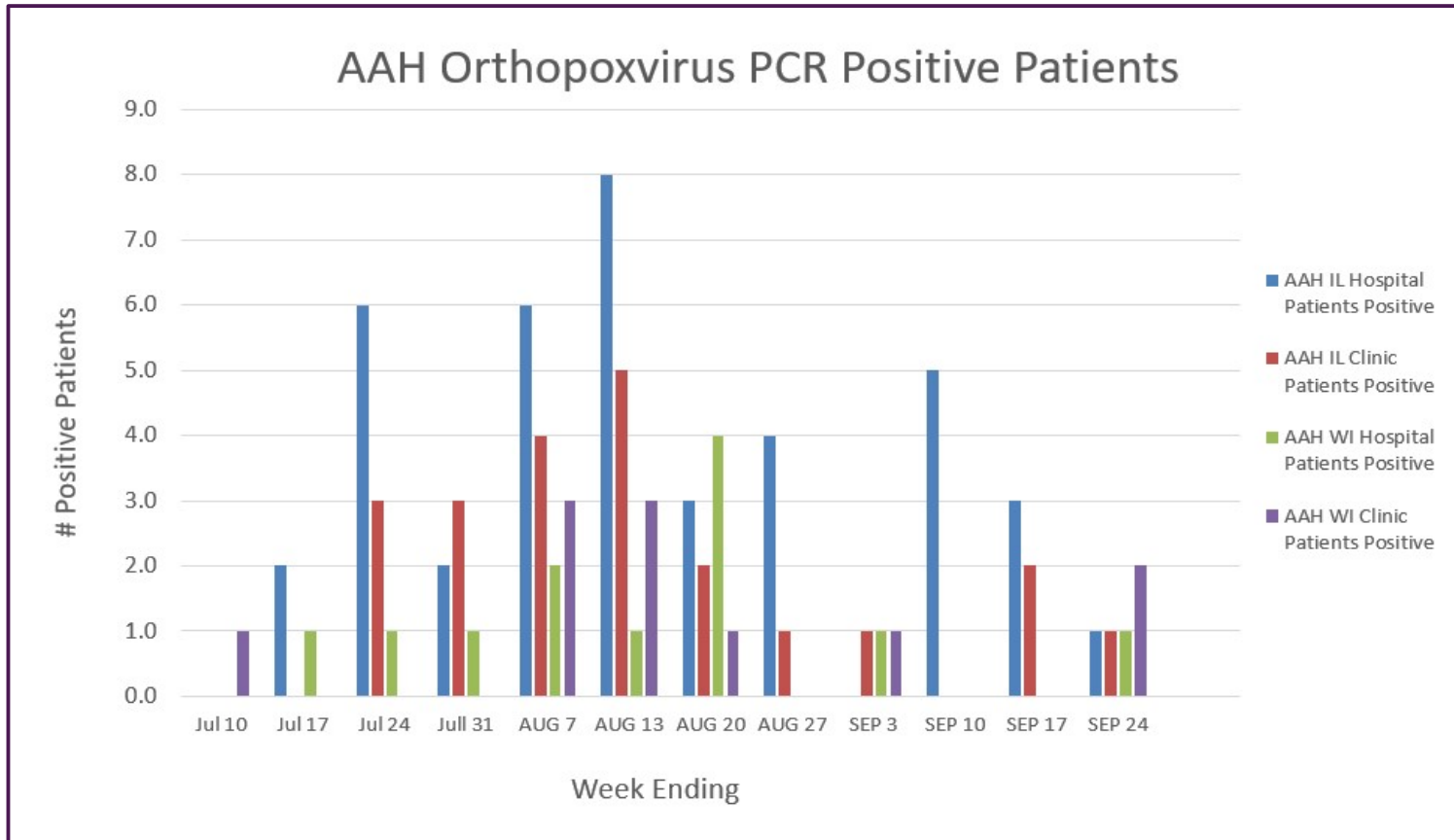


## ACL RSV PCR positivity rate (July 31, 2022 – September 24, 2022)



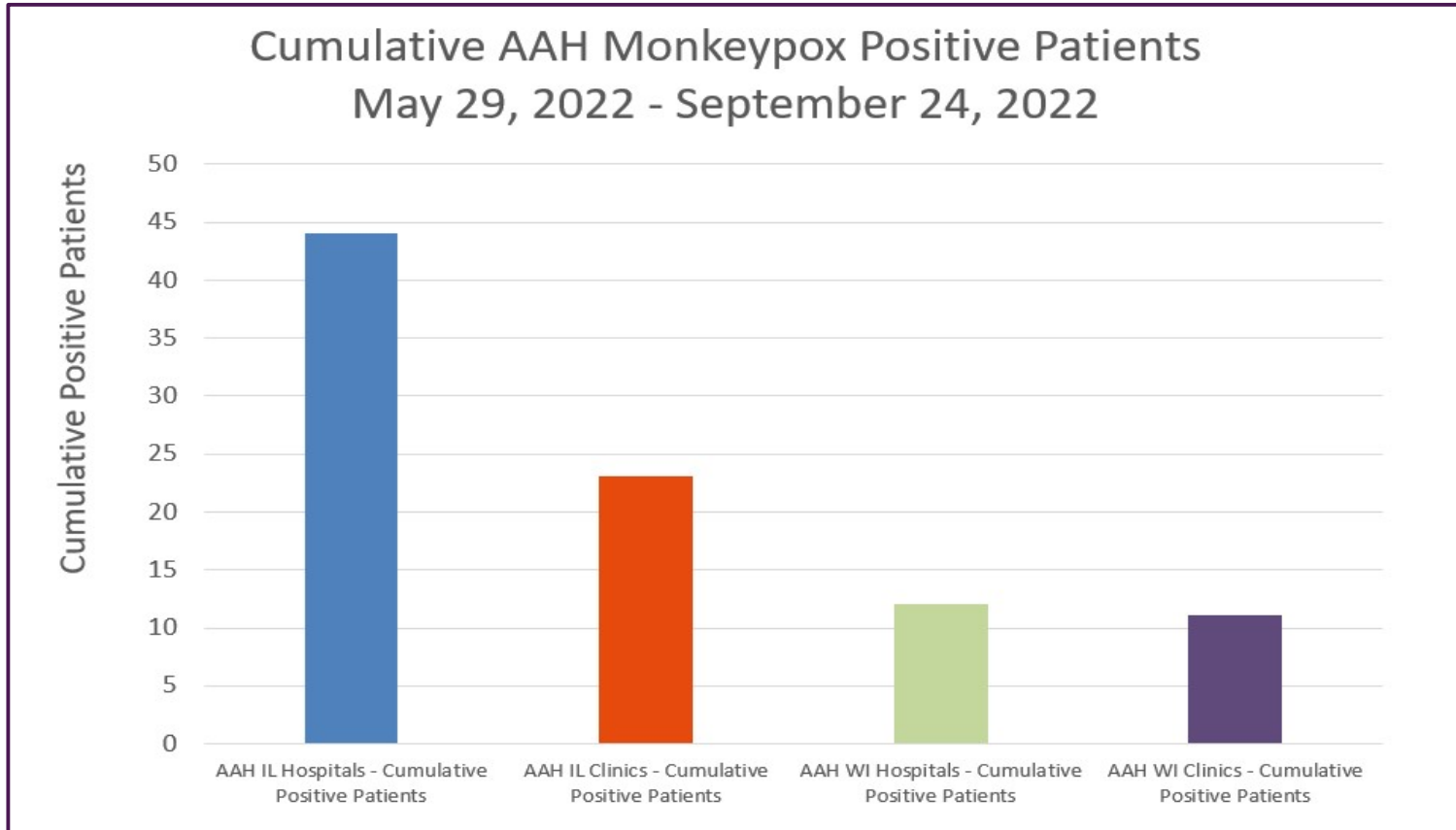
Data generated using: Respiratory Pathogen Panel (LAB9955) and COVID/FLU/RSV Panel (LAB10789)

## AAH Orthopoxvirus Positive Patients (July 10 – September 24, 2022)



Data generated using: Miscellaneous Test (LAB10119 to Sent to IL/WI State Labs) 5/29/22-7/24/22 and Orthopoxvirus by PCR (LAB11274 sent to ARUP 7/25/22 – Present)

## AAH Orthopoxvirus Positive Patients (May 29 – September 24, 2022)



Data generated using: Miscellaneous Test (LAB10119 to Sent to IL/WI State Labs) 5/29/22-7/24/22 and Orthopoxvirus by PCR (LAB11274 sent to ARUP 7/25/22 – Present)