

# ACL Laboratories Respiratory Virus Activity Report

Updated: October 30, 2023

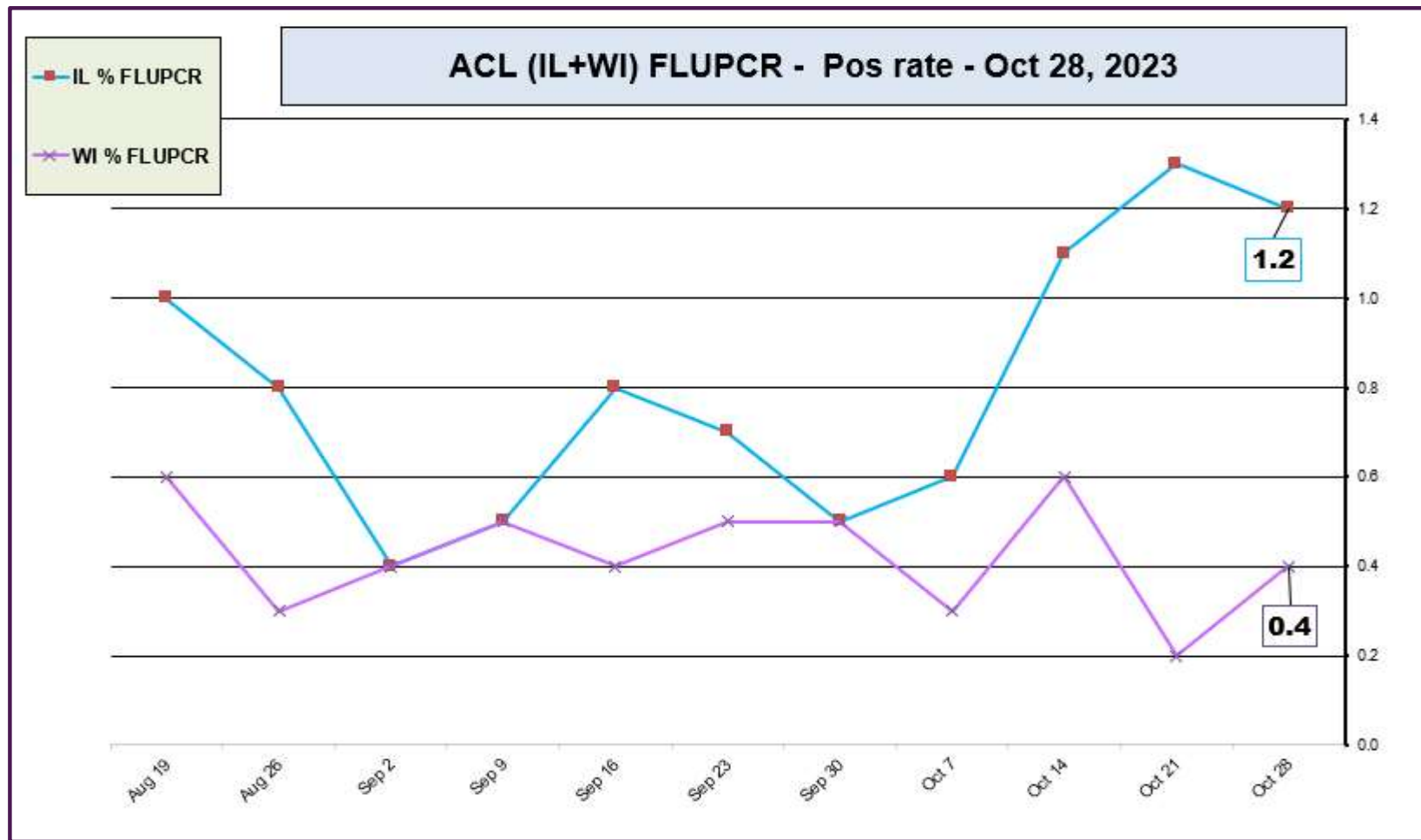


## RESPIRATORY PATHOGEN PANEL NOVEMBER 2022 - OCTOBER 28, 2023 Positivity Rate (%)

MONTH	FLU A UnSub	FLU A (H1N1)	2009 H1N1	FLU A H3N2	FLU B	RSV A/B	PARA 1	PARA 2	PARA 3	Para 4	COR 229E	COR NL63	COR OC43	COR HKU1	SARS-CoV-2	Human META	E/R	Adeno	BOCA	Chlamydo phila	Mycoplasma	B. pertussis	B. paraper	Legionella
OCT 2023	0.0	0.0	0.2	0.0	0.1	2.0	2.4	0.8	0.3	1.1	0.1	0.1	0.2	0.0	1.3	0.5	18.5	2.7	0.3	0.0	0.4	0.0	0.0	0.1
SEP 2023	0.0	0.0	0.1	0.0	0.0	0.2	1.2	1.0	0.4	0.4	0.0	0.0	0.1	0.0	N/A	0.7	24.0	1.8	0.5	0.0	0.1	N/A	N/A	0.1
AUG 2023	0.0	0.0	0.4	0.0	0.1	0.0	0.4	1.4	1.6	0.5	0.0	0.0	0.7	0.0	N/A	2.9	13.3	2.3	0.4	0.0	0.0	N/A	N/A	0.0
JUL 2023	0.0	0.0	0.0	0.1	0.1	0.4	1.2	1.7	1.5	0.9	0.0	0.3	0.0	0.0	N/A	3.1	11.1	2.4	0.2	0.0	0.0	N/A	N/A	0.4
JUN 2023	0.0	0.0	0.1	0.0	0.1	0.3	0.8	1.6	5.2	0.0	0.1	0.1	0.1	0.0	N/A	0.5	11.3	3.5	0.3	0.0	0.0	N/A	N/A	0.2
MAY 2023	0.0	0.1	0.2	0.0	0.1	0.2	0.5	1.1	6.8	0.1	0.1	0.9	0.1	0.1	N/A	3.2	17.1	3.2	0.5	0.0	0.0	N/A	N/A	0.0
APR 2023	0.0	0.0	0.2	0.1	0.1	0.1	0.4	0.5	5.4	0.1	0.3	0.9	0.2	0.5	N/A	11.1	12.1	3.1	1.0	0.0	0.0	N/A	N/A	0.1
MAR 2023	0.1	0.0	0.1	0.0	0.1	0.2	0.4	0.1	2.7	0.0	0.3	1.9	0.8	0.8	N/A	13.3	13.1	3.2	1.4	0.0	0.0	N/A	N/A	0.0
FEB 2023	0.0	0.0	0.2	0.1	0.0	0.5	0.0	0.4	1.2	0.2	0.0	3.7	1.5	1.6	N/A	9.3	13.2	3.7	1.6	0.0	0.0	N/A	N/A	0.0
JAN 2023	0.2	0.0	0.5	0.5	0.1	1.2	0.7	0.1	0.8	0.3	0.2	1.2	2.0	1.4	N/A	5.9	12.1	3.3	2.9	0.0	0.0	N/A	N/A	0.0
DEC 2022	0.3	0.1	1.0	7.0	0.1	3.6	1.1	0.2	0.5	1.5	0.3	0.6	1.7	1.3	N/A	2.1	11.7	2.9	4.0	0.1	0.1	N/A	N/A	0.1
NOV 2022	0.3	0.0	0.5	5.6	0.0	8.1	1.6	0.5	0.8	1.4	0.1	0.1	0.5	0.0	N/A	0.8	13.0	2.6	3.3	0.0	0.0	N/A	N/A	0.0

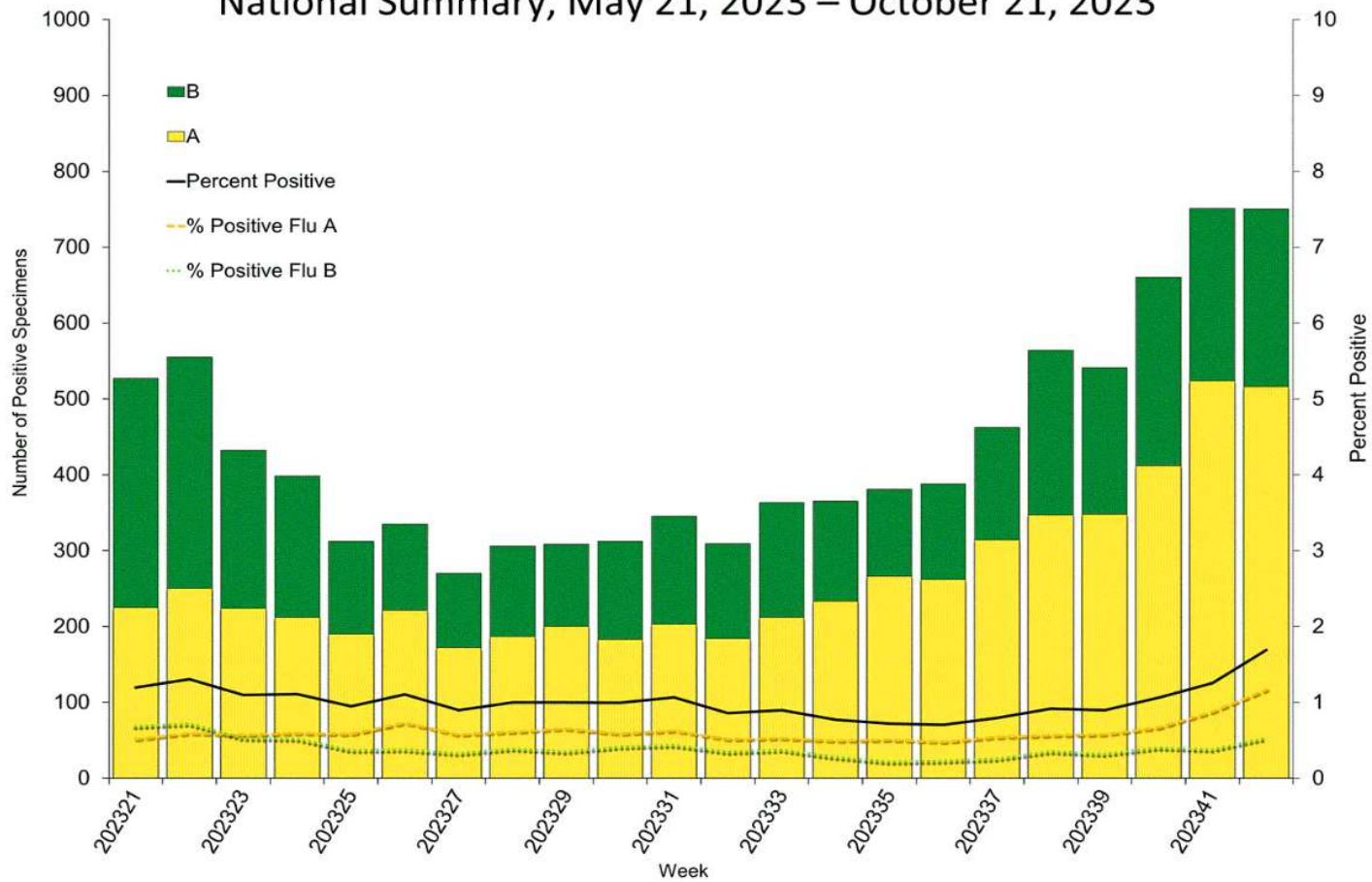
Data generated using: Respiratory Pathogen Panel (prior to 10/16/23) and Rapid Respiratory Pathogen Panel (beginning 10/16/23)

## ACL INFLUENZA positivity rate (Aug 19, 2023 – Oct 28, 2023)



Data generated using: Rapid Respiratory Pathogen Panel (LAB9039), Influenza PCR, COVID/FLU/RSV Panel (LAB10789), COVID/Flu by PCR (LAB10889), and SARS-CoV-2/Influenza by PCR (LAB11071)

## Influenza Positive Tests Reported to CDC by U.S. Clinical Laboratories, National Summary, May 21, 2023 – October 21, 2023

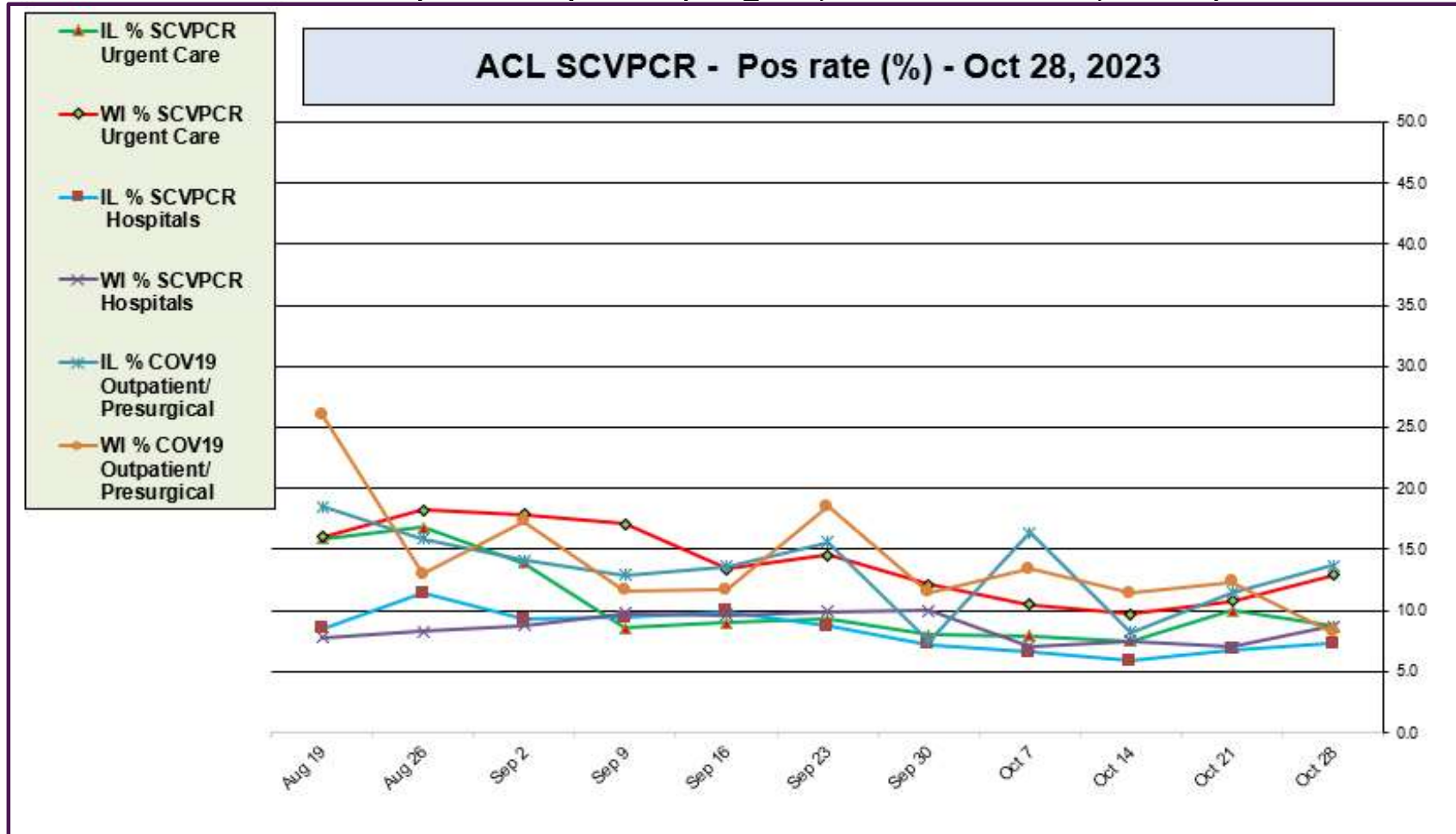


<https://www.cdc.gov/>



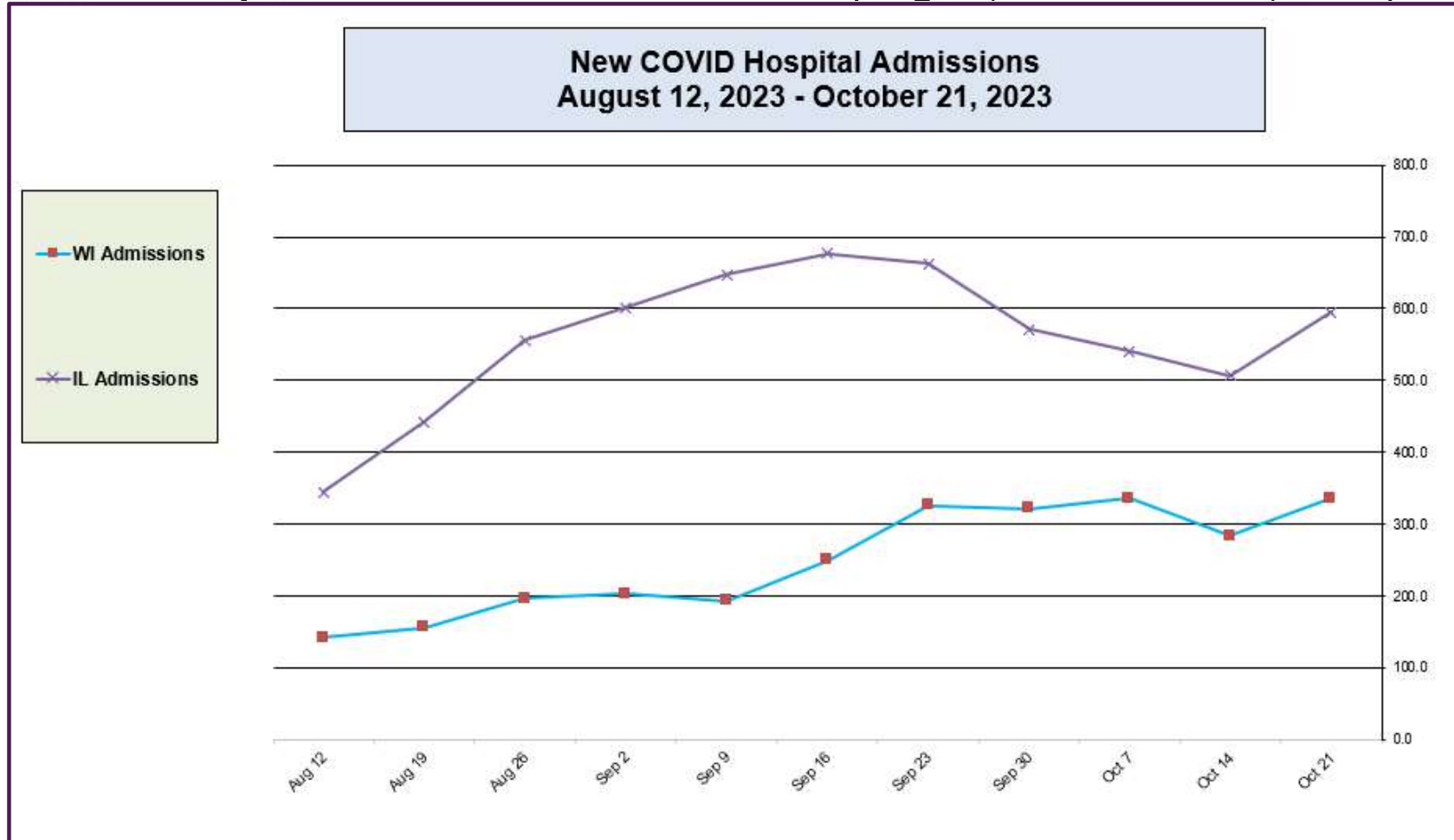


## ACL SARS-CoV-2 positivity rate (Aug 19, 2023 – Oct 28, 2023)



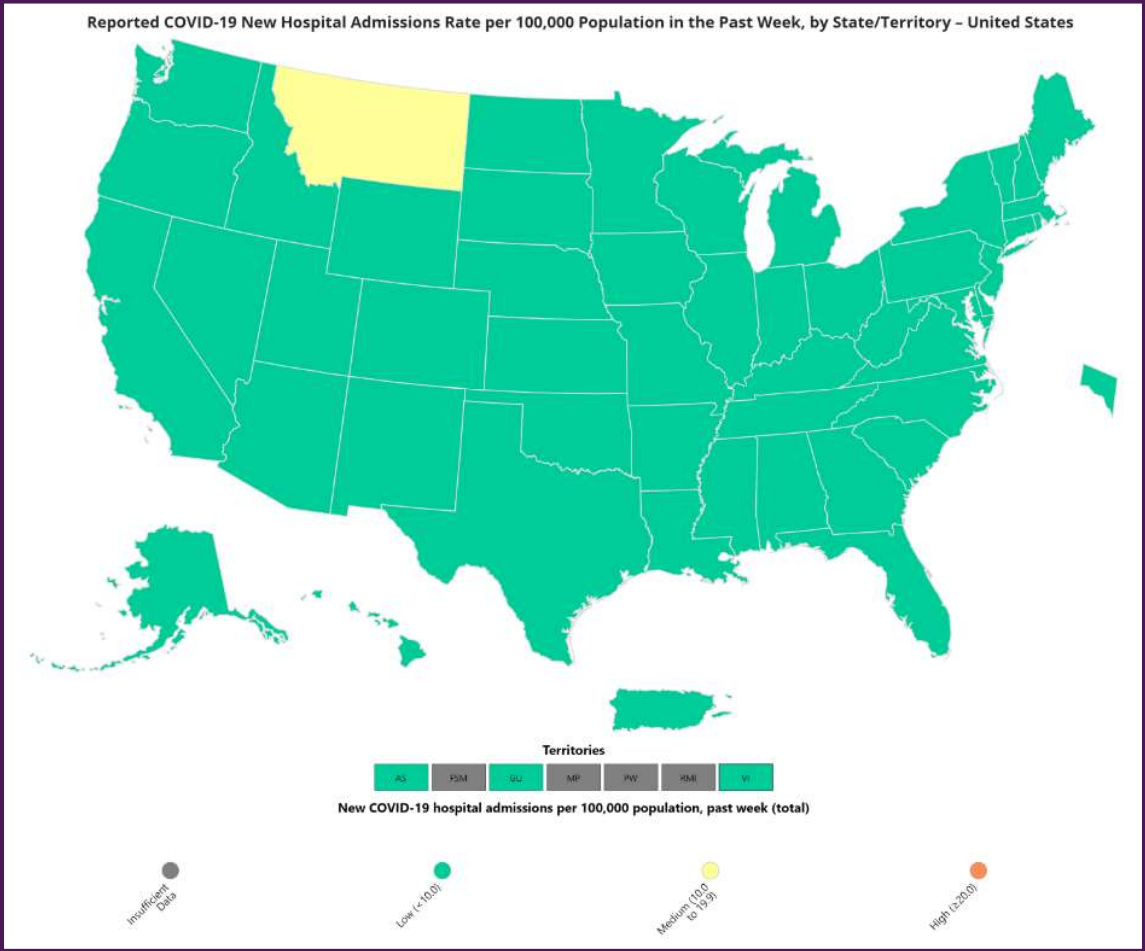
Data generated using: RAPID SARS-COV-2 BY PCR (LAB10644), COVID/FLU/RSV Panel (LAB10789) , prior to 9/17 COVID-19 ANTIGEN TEST (SOFIA) (LAB10715) , post 9/17 LAB10644 performed at WI and IL urgent cares sites, and Rapid Respiratory Pathogen Panel (LAB9039)

## New COVID Hospital Admissions from CDC Data (Aug 12, 2023 – Oct 21, 2023)



Data generated from: [https://covid.cdc.gov/covid-data-tracker/#maps\\_new-admissions-rate-state](https://covid.cdc.gov/covid-data-tracker/#maps_new-admissions-rate-state)

# COVID Hospital Admission Rates Per 100,000 from CDC Data (Week Ending Oct 21, 2023)

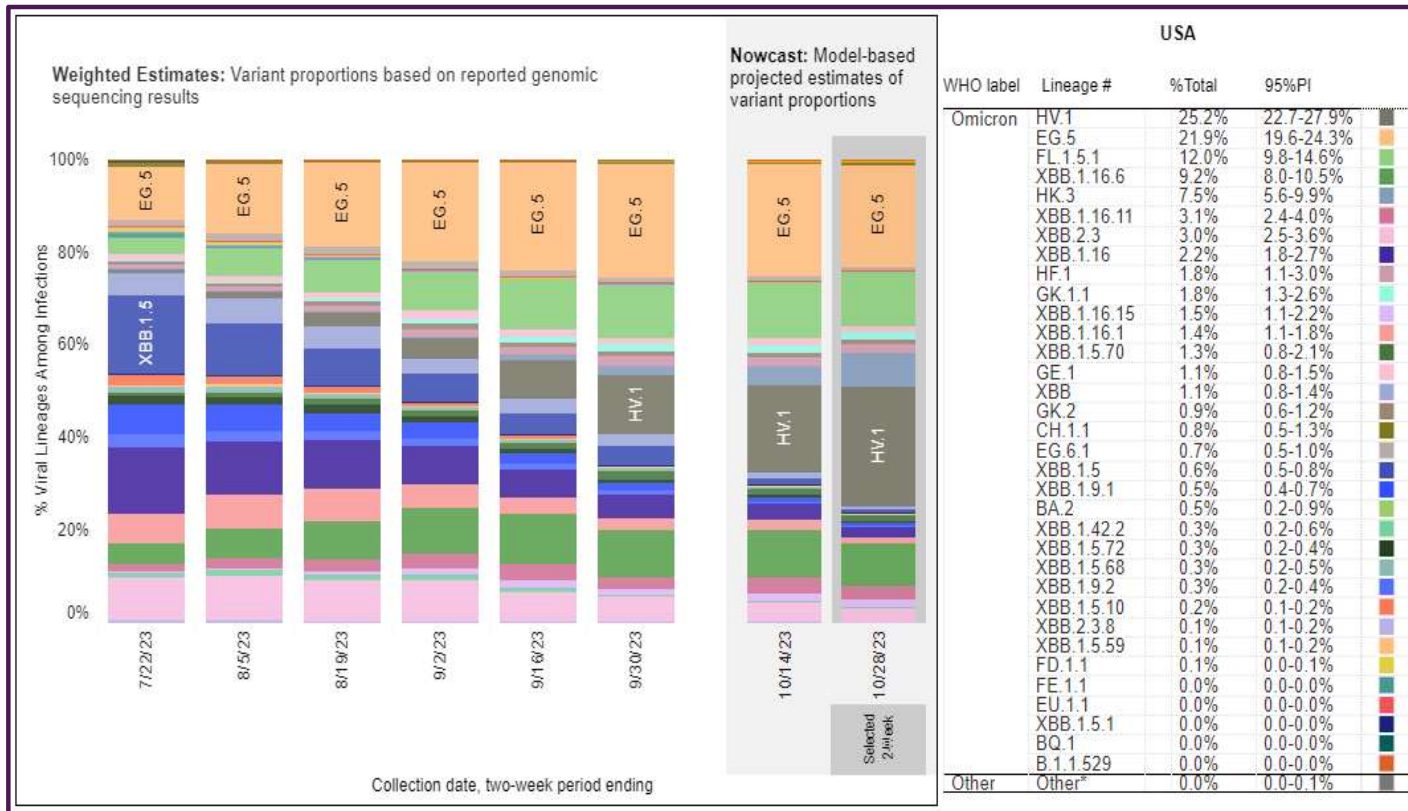


Data generated from: [https://covid.cdc.gov/covid-data-tracker/#maps\\_new-admissions-rate-state](https://covid.cdc.gov/covid-data-tracker/#maps_new-admissions-rate-state)



# October 28, 2023 – TOP 5 SARS-CoV-2 Strains circulating in the Midwest by Nowcast modeling

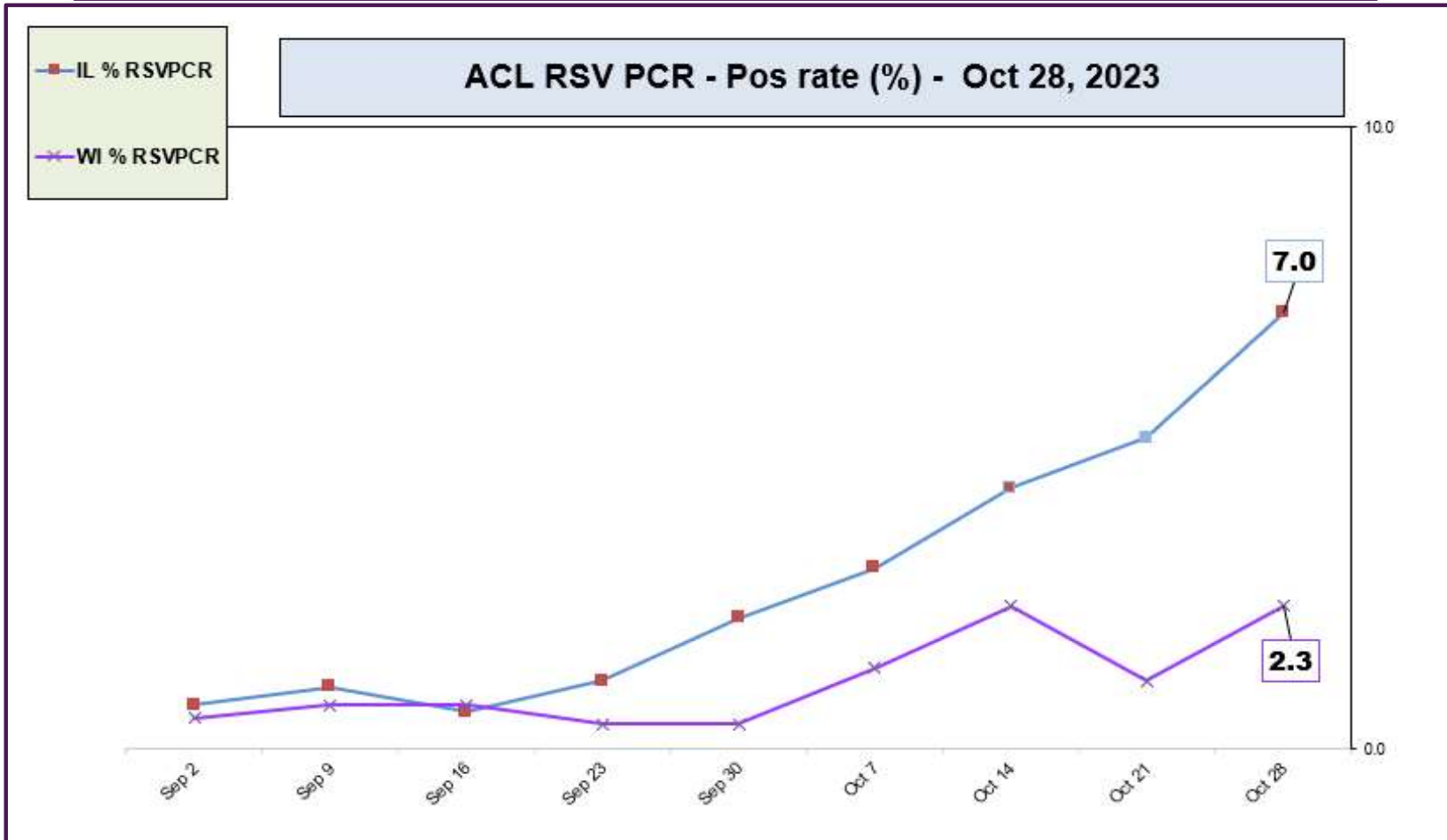
(Omicron HV.1 – 25.2% ↑, EG.5 – 21.9% ↓, FL.1.5.1 12.0% ↓, XBB.1.16.6 – 9.2% ↓, HK.3 7.5% ↑)



\*\* CDC uses **Nowcast** model that estimates more recent proportions of circulating variants (actual sequencing data is typically delayed for 2 weeks).

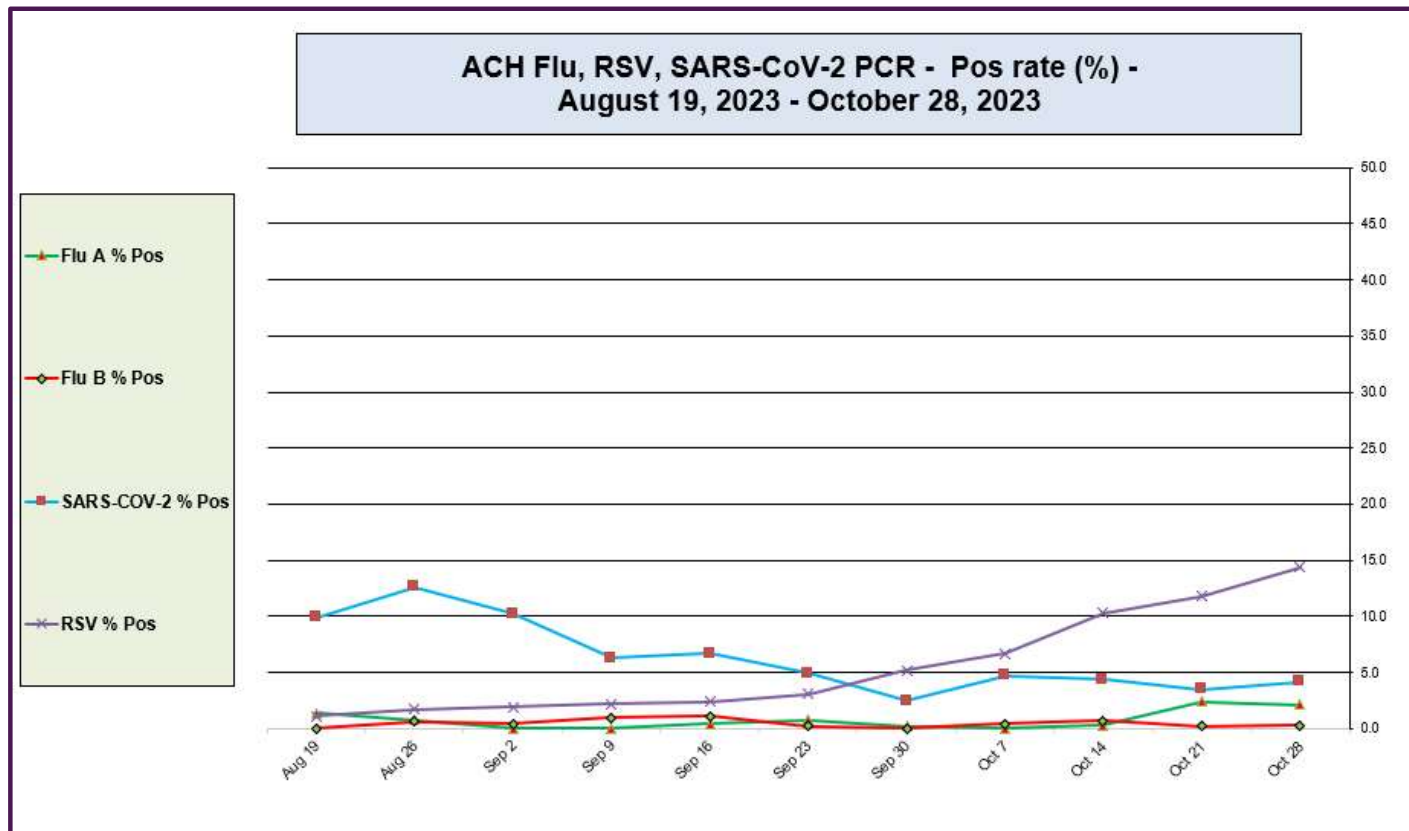
<https://www.cdc.gov/>

## ACL RSV PCR positivity rate (Sep 2, 2023 – Oct 28, 2023)



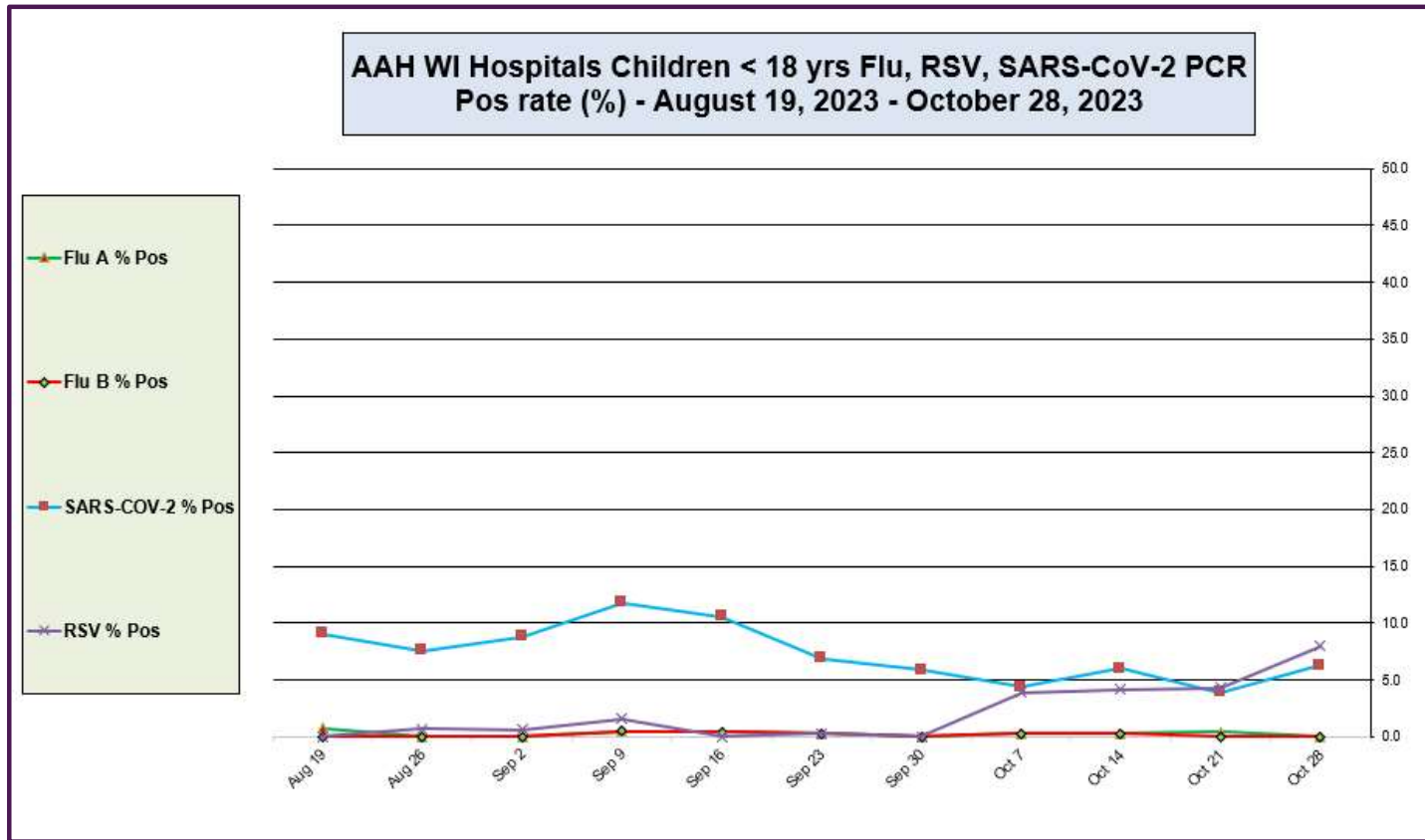
Data generated using: Rapid Respiratory Pathogen Panel (LAB9039) and COVID/FLU/RSV Panel (LAB10789)

## Advocate Children's Hospital Influenza A, Influenza B, RSV, and SARS-CoV-2 PCR Positivity rates (Aug 19, 2023 – Oct 28, 2023)



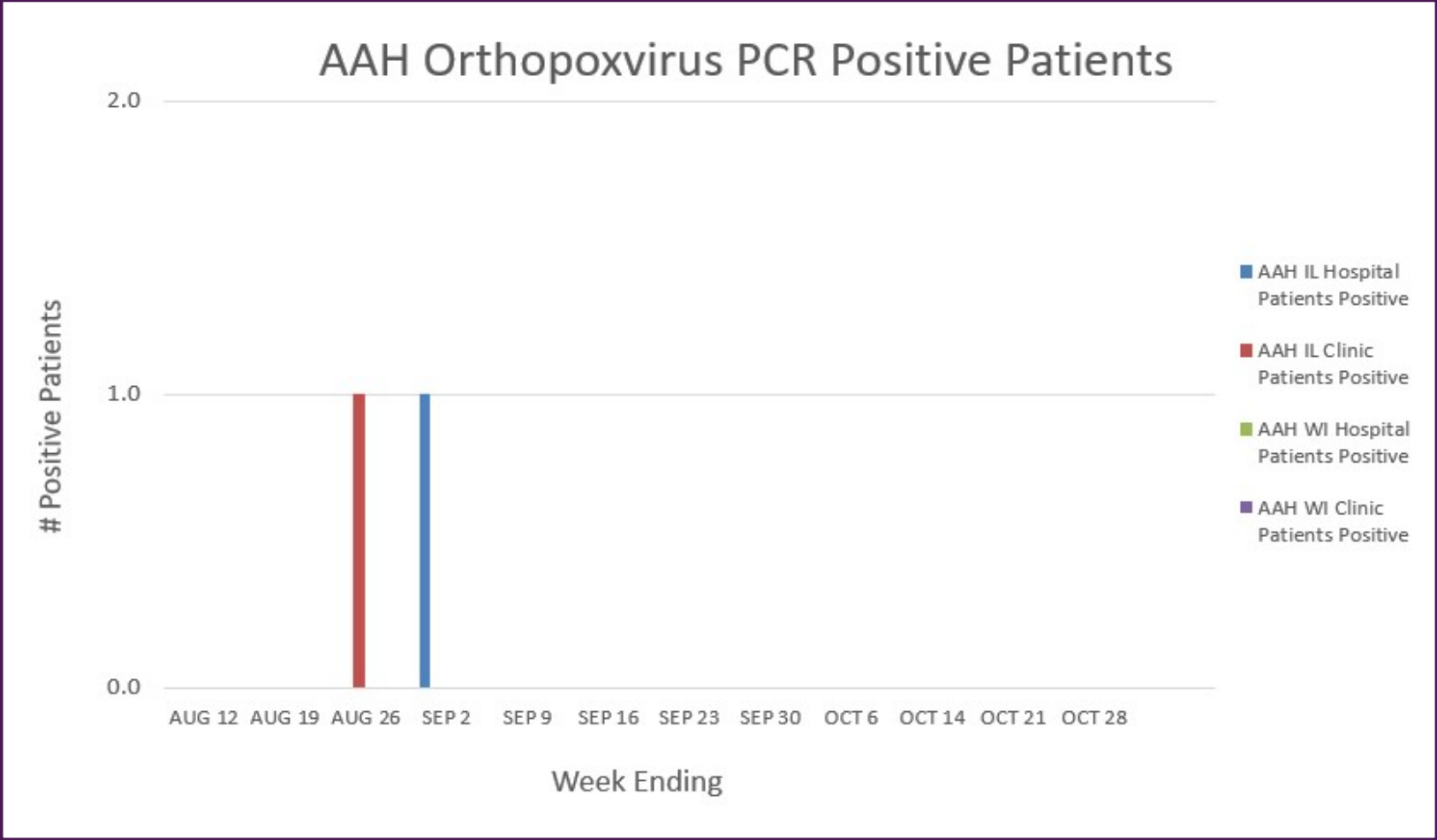
**Data generated using:** Respiratory Pathogen Panel (LAB9955), Rapid Respiratory Pathogen Panel (LAB9039), Rapid SARS-CoV-2 by PCR (LAB10644), COVID/FLU by PCR (LAB10889), COVID/FLU/RSV Panel (LAB10789), 2019 Novel Coronavirus (SARS-CoV-2) LAB10635

# AAH WI Hospitals (patients < 18 yrs old) Influenza A, Influenza B, RSV, and SARS-CoV-2 PCR Positivity rates (Aug 19, 2023 – Oct 28, 2023)



Data generated using: Respiratory Pathogen Panel (LAB9955), Rapid Respiratory Pathogen Panel (LAB9039), Rapid SARS-CoV-2 by PCR (LAB10644), COVID/FLU by PCR (LAB10889), COVID/FLU/RSV Panel (LAB10789), 2019 Novel Coronavirus (SARS-CoV-2) LAB10635

# AAH Orthopoxvirus Positive Patients (Aug 12, 2023 – October 28, 2023)



Data generated using: Miscellaneous Test (LAB10119 to Sent to IL/WI State Labs) 5/29/22-7/24/22 and Orthopoxvirus by PCR (LAB11274 sent to ARUP 7/25/22 – Present)