

ACL Laboratories Respiratory Virus Activity Report

Updated: April 3, 2024

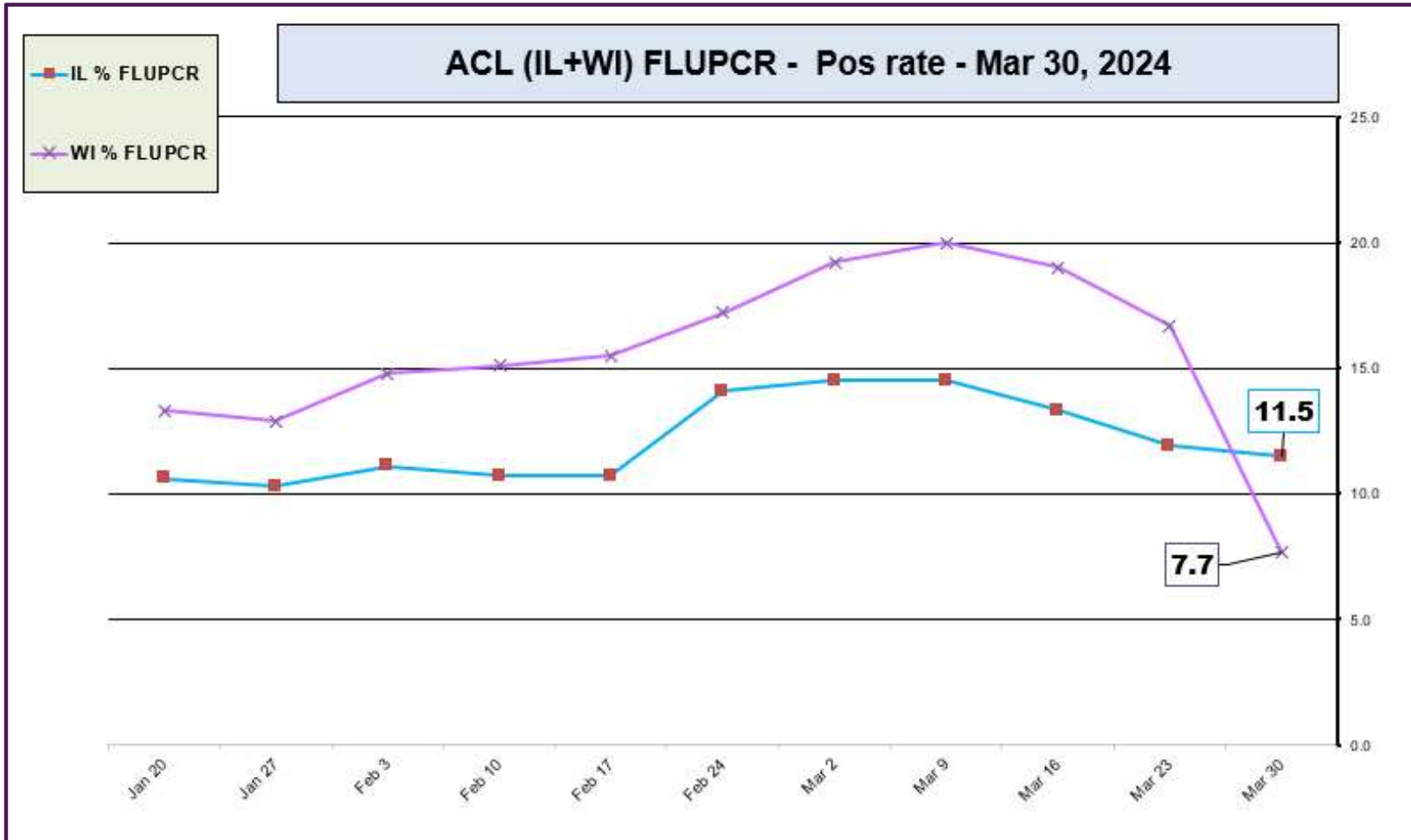


RESPIRATORY PATHOGEN POSITIVITY RATE - APRIL 2023 - MARCH 31, 2024

MONTH	FLU A UnSub	FLU A (H1N1)	2009 H1N1	FLU A H3N2	FLU B	RSV A/B	PARA 1	PARA 2	PARA 3	Para 4	COR 229E	COR NL63	COR OC43	COR HKU1	SARS-CoV-2	Human META	E/R	Adeno	BOCA	Chlamydo phila	Mycoplasma	B. pertussis	B. paraper	Legionella # Pos
MAR 2024	5.8	0.0	1.9	0.7	9.4	1.8	0.0	0.0	1.9	0.1	1.4	0.7	2.1	1.5	4.3	7.9	12.6	3.2	N/A	0.0	0.0	0.0	0.0	0
FEB 2024	8.4	0.0	3.0	1.1	6.0	3.3	0.0	0.0	0.5	0.1	1.3	0.2	4.8	1.5	8.7	3.0	12.7	4.1	N/A	0.0	0.2	0.1	0.0	0
JAN 2024	11.0	0.0	4.3	1.2	1.6	7.1	0.2	0.1	0.4	0.2	0.4	0.0	3.4	0.4	10.5	1.2	7.1	5.2	N/A	0.0	0.4	0.2	0.1	0
DEC 2023	11.2	0.0	2.8	1.2	0.8	10.3	0.9	0.3	0.0	0.5	0.2	0.1	2.7	0.4	14.4	0.8	12.7	5.6	N/A	0.0	0.6	0.0	0.0	0
NOV 2023	2.6	0.0	0.5	0.5	0.3	10.2	1.6	0.6	0.4	0.9	0.0	0.0	0.4	0.1	12.5	0.4	16.8	5.7	N/A	0.0	0.5	0.0	0.3	0
OCT 2023	0.6	0.0	0.2	0.0	0.1	4.0	2.4	0.8	0.3	1.0	0.1	0.1	0.2	0.0	8.9	0.5	19.1	2.6	0.3	0.0	0.4	N/A	N/A	2
SEP 2023	0.4	0.0	0.1	0.0	0.2	0.9	1.2	1.0	0.4	0.4	0.0	0.0	0.1	0.0	11.7	0.7	24.0	1.8	0.5	0.0	0.1	N/A	N/A	1
AUG 2023	0.5	0.0	0.4	0.0	0.2	0.5	0.4	1.4	1.6	0.5	0.0	0.0	0.7	0.0	12.4	2.9	13.3	2.3	0.4	0.0	0.0	N/A	N/A	0
JUL 2023	0.6	0.0	0.0	0.1	0.2	0.4	1.2	1.7	1.5	0.9	0.0	0.3	0.0	0.0	6.5	3.1	11.1	2.4	0.2	0.0	0.0	N/A	N/A	4
JUN 2023	0.5	0.0	0.1	0.0	0.5	0.3	0.8	1.6	5.2	0.0	0.1	0.1	0.1	0.0	4.6	0.5	11.3	3.5	0.3	0.0	0.0	N/A	N/A	3
MAY 2023	0.6	0.1	0.2	0.0	0.6	0.3	0.5	1.1	6.8	0.1	0.1	0.9	0.1	0.1	5.8	3.2	17.1	3.2	0.5	0.0	0.0	N/A	N/A	0
APR 2023	0.6	0.0	0.2	0.1	0.5	0.4	0.4	0.5	5.4	0.1	0.3	0.9	0.2	0.5	7.1	11.1	12.1	3.1	1.0	0.0	0.0	N/A	N/A	1

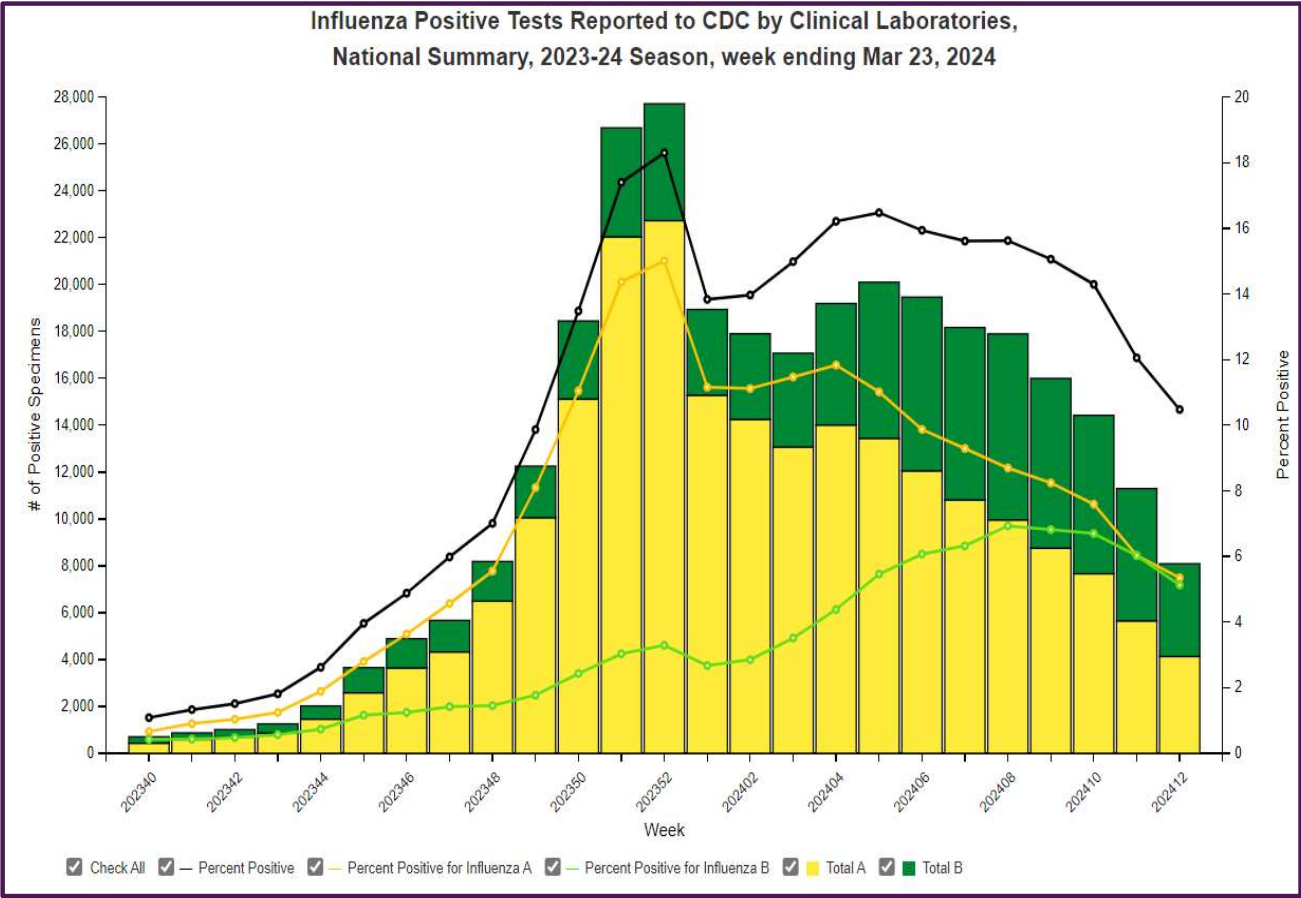
Data generated using: Respiratory Pathogen Panel (prior to 10/16/23), Rapid Respiratory Pathogen Panel (beginning 10/16/23), RAPID SARS-COV-2 BY PCR (LAB10644), COVID/FLU/RSV Panel (LAB10789) , Rapid COVID/FLU PCR Panel (LAB10889),

ACL INFLUENZA positivity rate (Jan 20, 2024 – Mar 30, 2024)



Data generated using: Rapid Respiratory Pathogen Panel (LAB9039), Influenza PCR, COVID/FLU/RSV Panel (LAB10789), COVID/Flu by PCR (LAB10889), and SARS-CoV-2/Influenza by PCR (LAB11071)

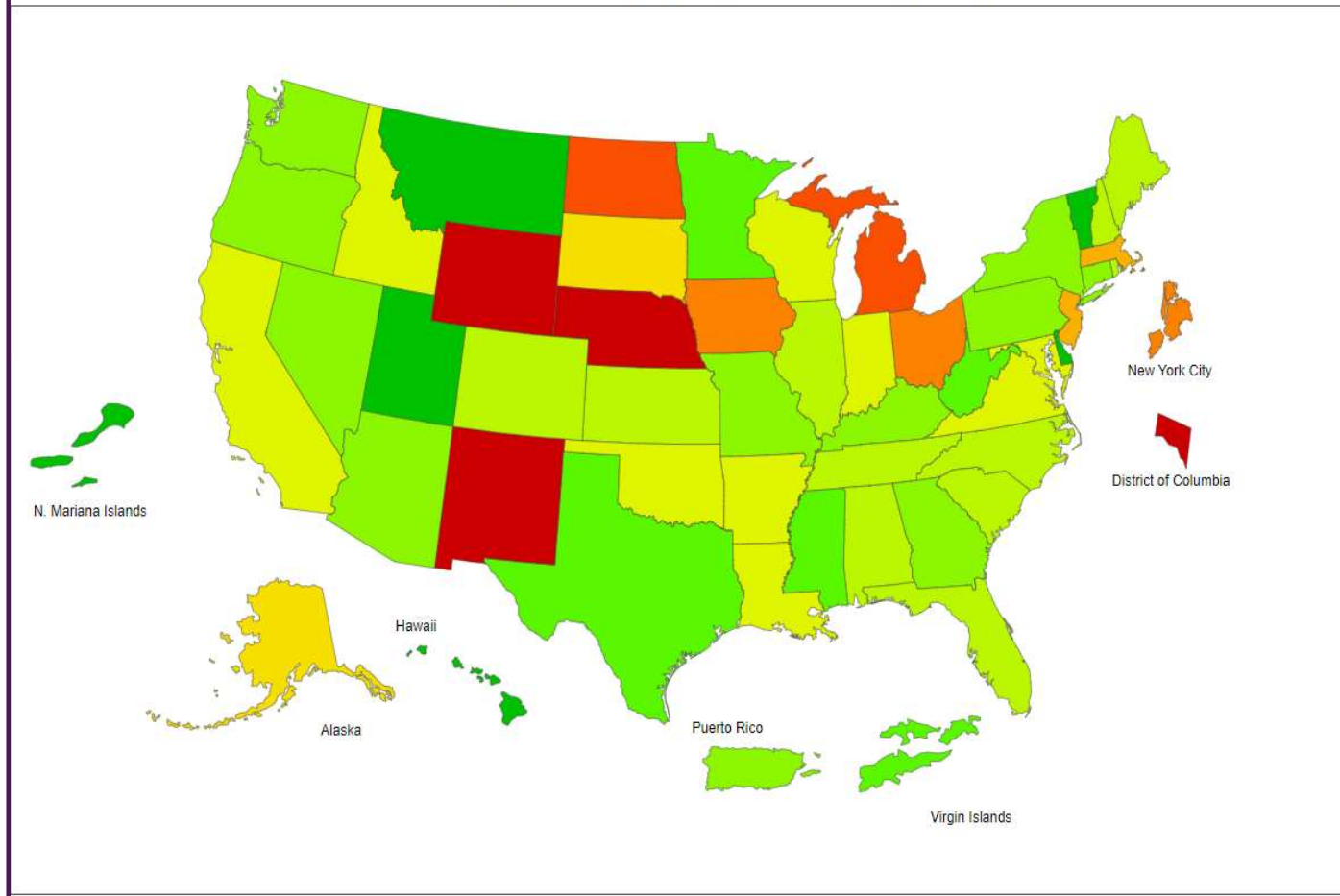
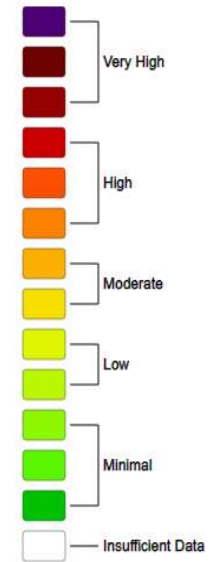
US National Influenza Positivity Rates – Week 12 ending Mar 23, 2024



<https://www.cdc.gov/>

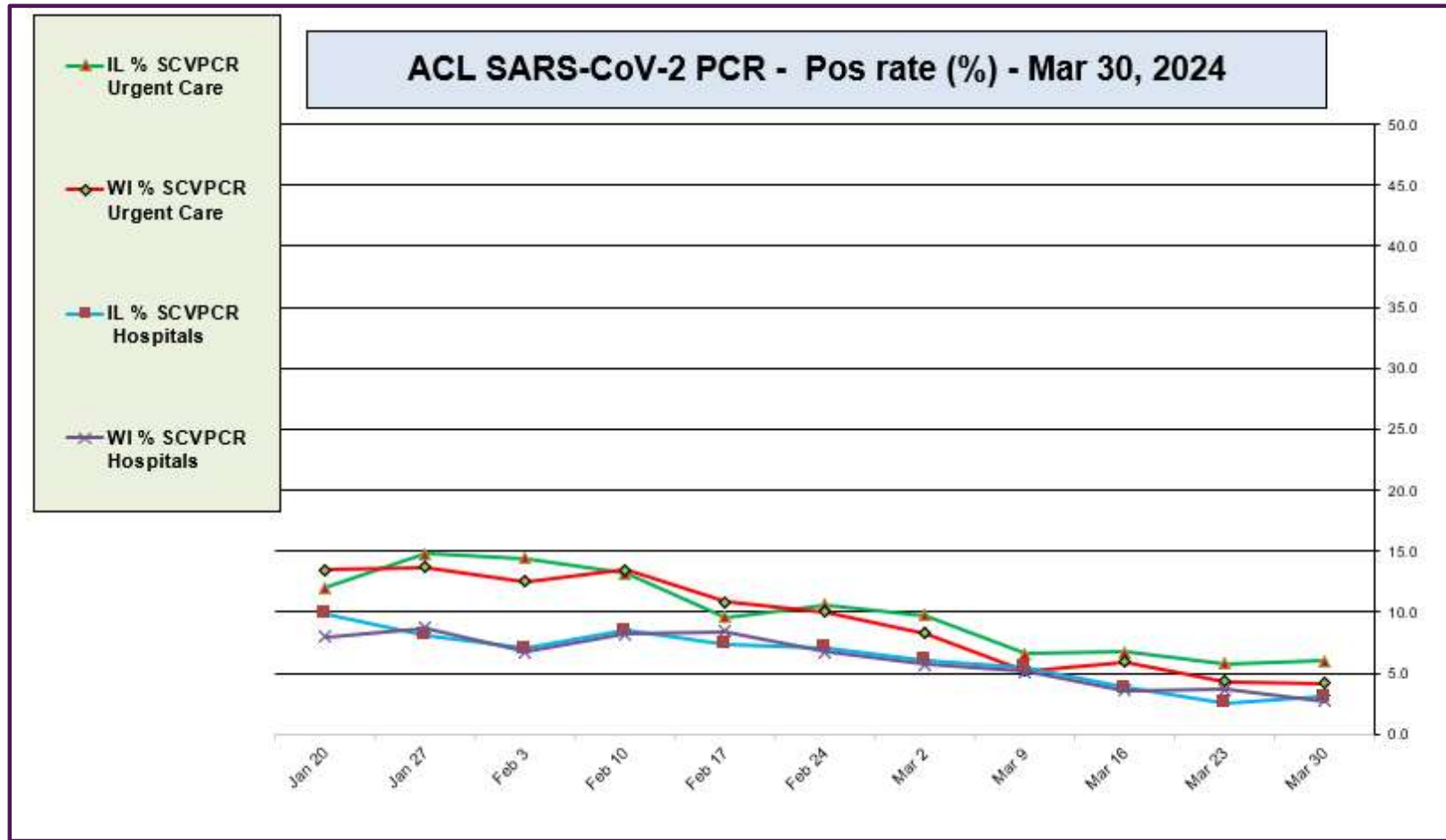
2023-24 Influenza Season Week 12 ending Mar 23, 2024

ILI Activity Level



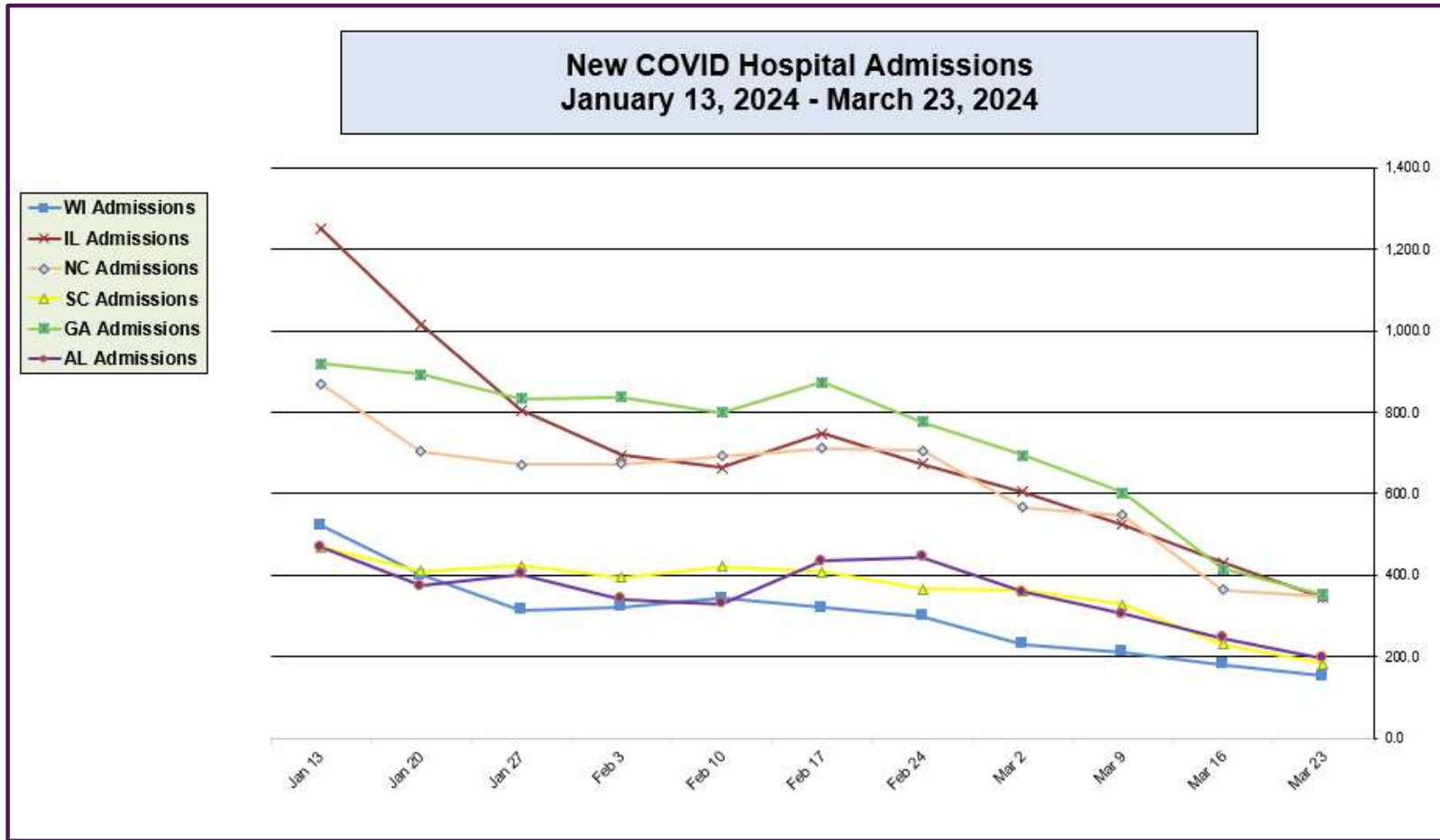
<https://www.cdc.gov/>

ACL SARS-CoV-2 positivity rate (Jan 20, 2024 – Mar 30, 2024)



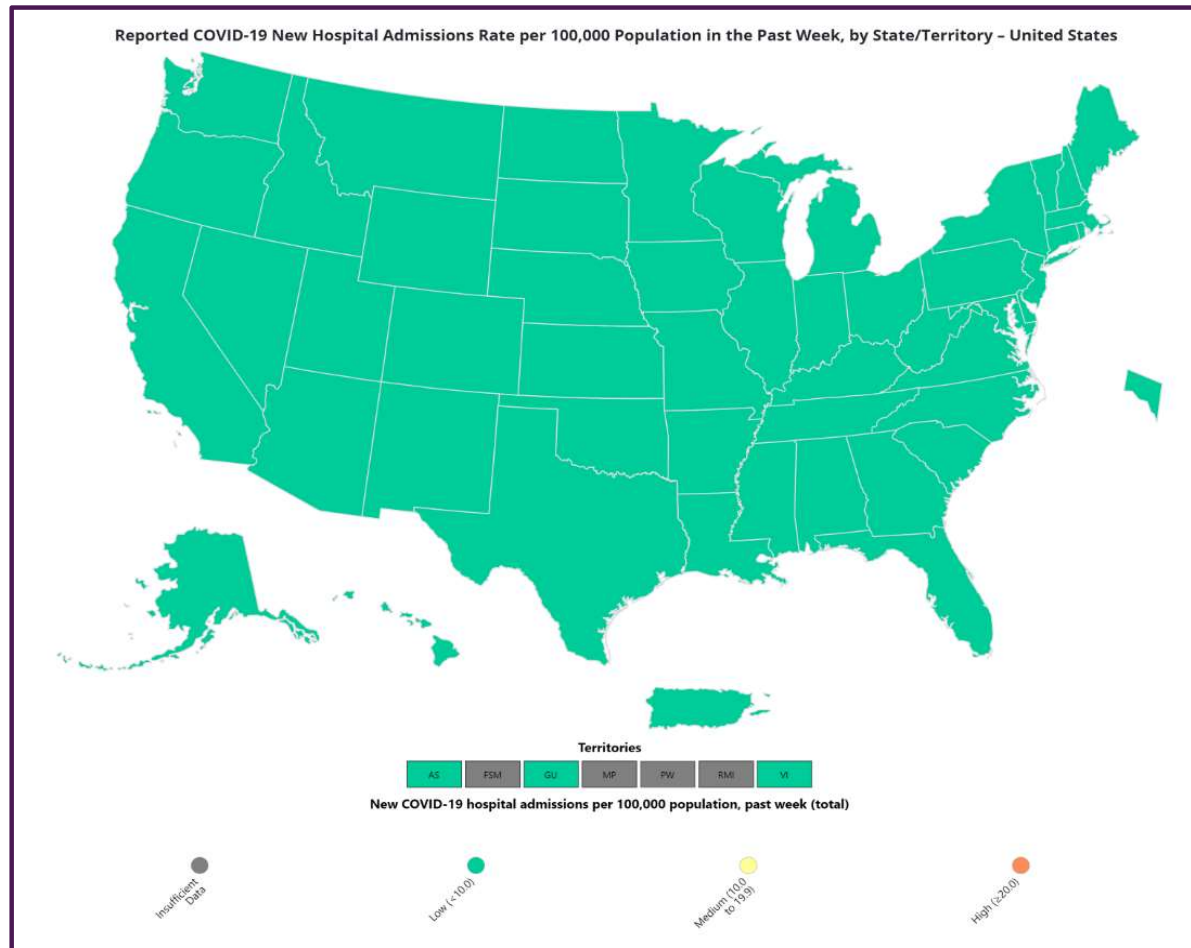
Data generated using: RAPID SARS-COV-2 BY PCR (LAB10644), COVID/FLU/RSV Panel (LAB10789) , prior to 9/17 COVID-19 ANTIGEN TEST (SOFIA) (LAB10715) , post 9/17 LAB10644 performed at WI and IL urgent cares sites, and Rapid Respiratory Pathogen Panel (LAB9039)

New COVID Hospital Admissions from CDC Data (Jan 13, 2024 – March 23, 2024)



Data generated from: https://covid.cdc.gov/covid-data-tracker/#maps_new-admissions-rate-state

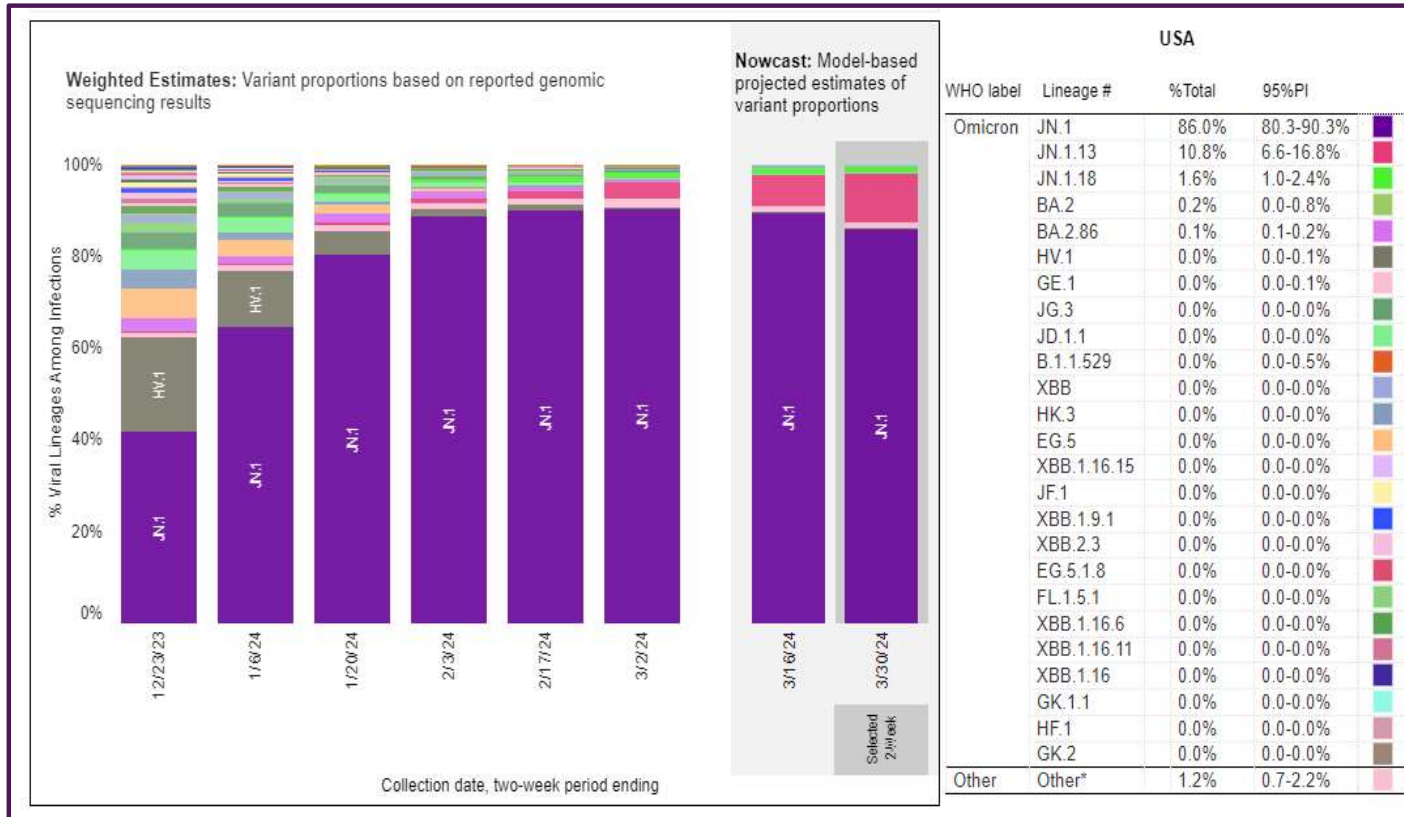
COVID Hospital Admission Rates Per 100,000 from CDC Data (Week Ending Mar 23, 2024)



Data generated from: https://covid.cdc.gov/covid-data-tracker/#maps_new-admissions-rate-state

March 30, 2024 – TOP 5 SARS-CoV-2 Strains circulating in the Midwest by Nowcast modeling

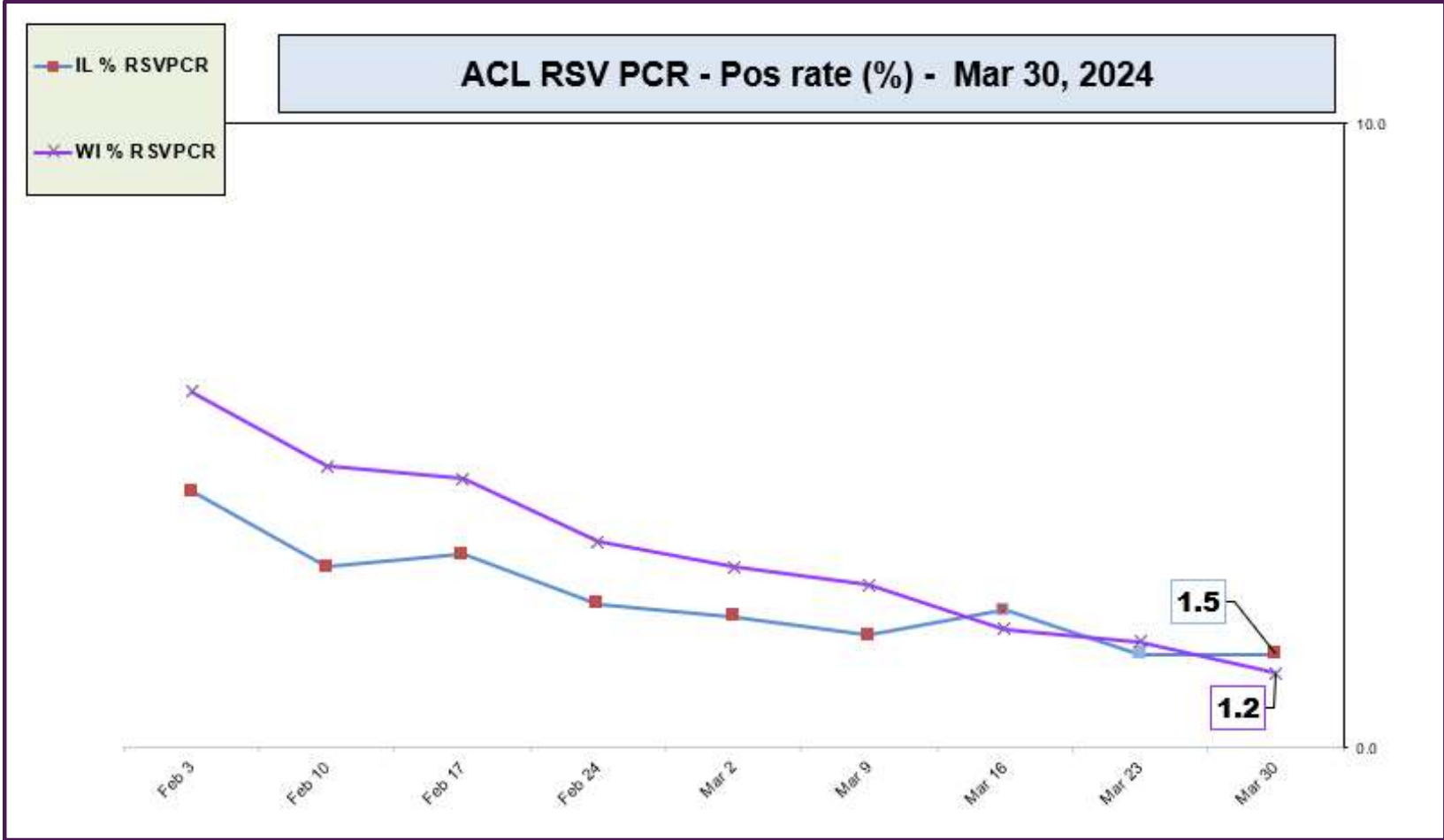
(Omicron JN.1 86.0% ↓, JN.1.13 10.8% ↑, JN.1.18 1.6% ↓ ↑, BA.2 – 0.2% ↑, BA.2.86 0.1% ↓)



** CDC uses **Nowcast** model that estimates more recent proportions of circulating variants (actual sequencing data is typically delayed for 2 weeks).

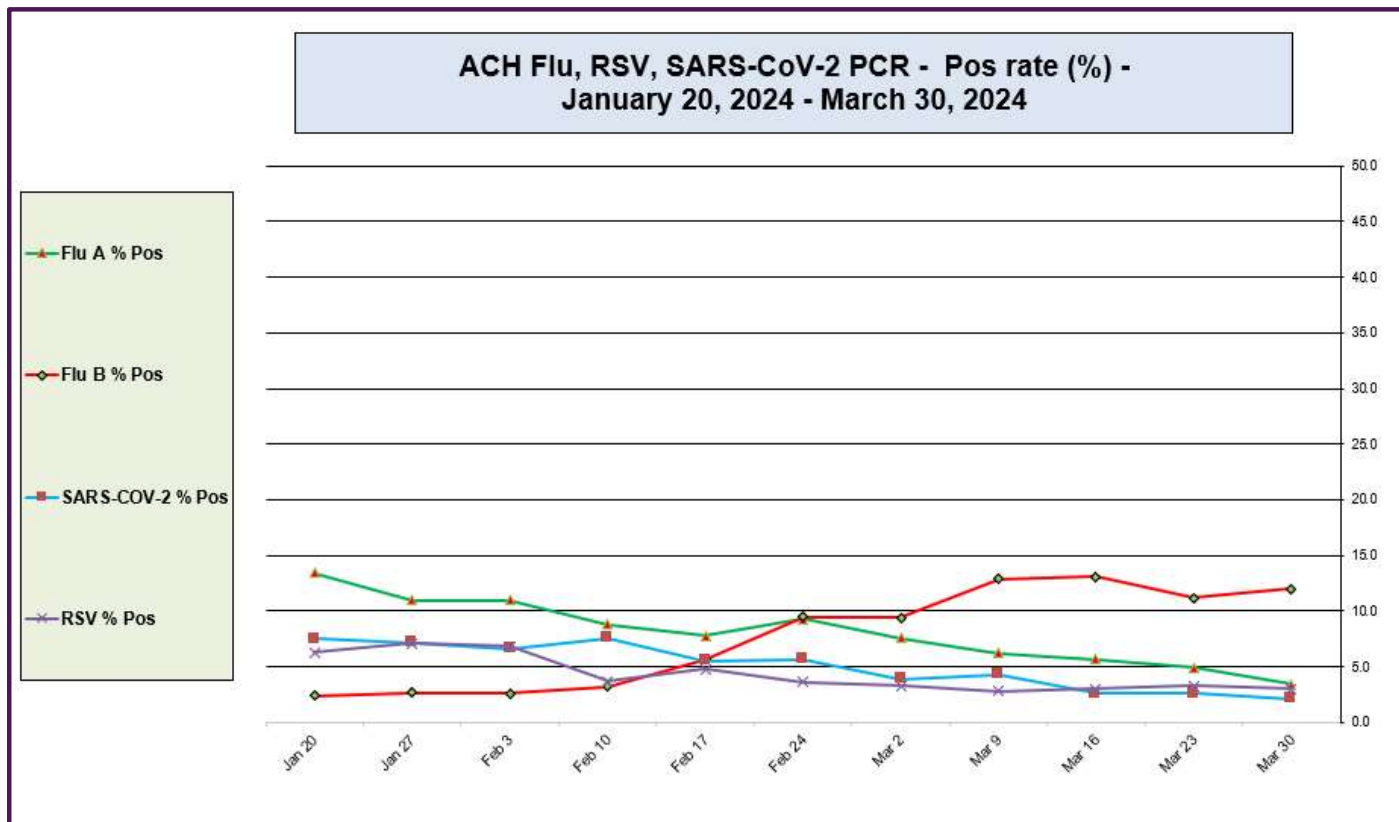
<https://www.cdc.gov/>

ACL RSV PCR positivity rate (Feb 3, 2024 – Mar 30, 2024)



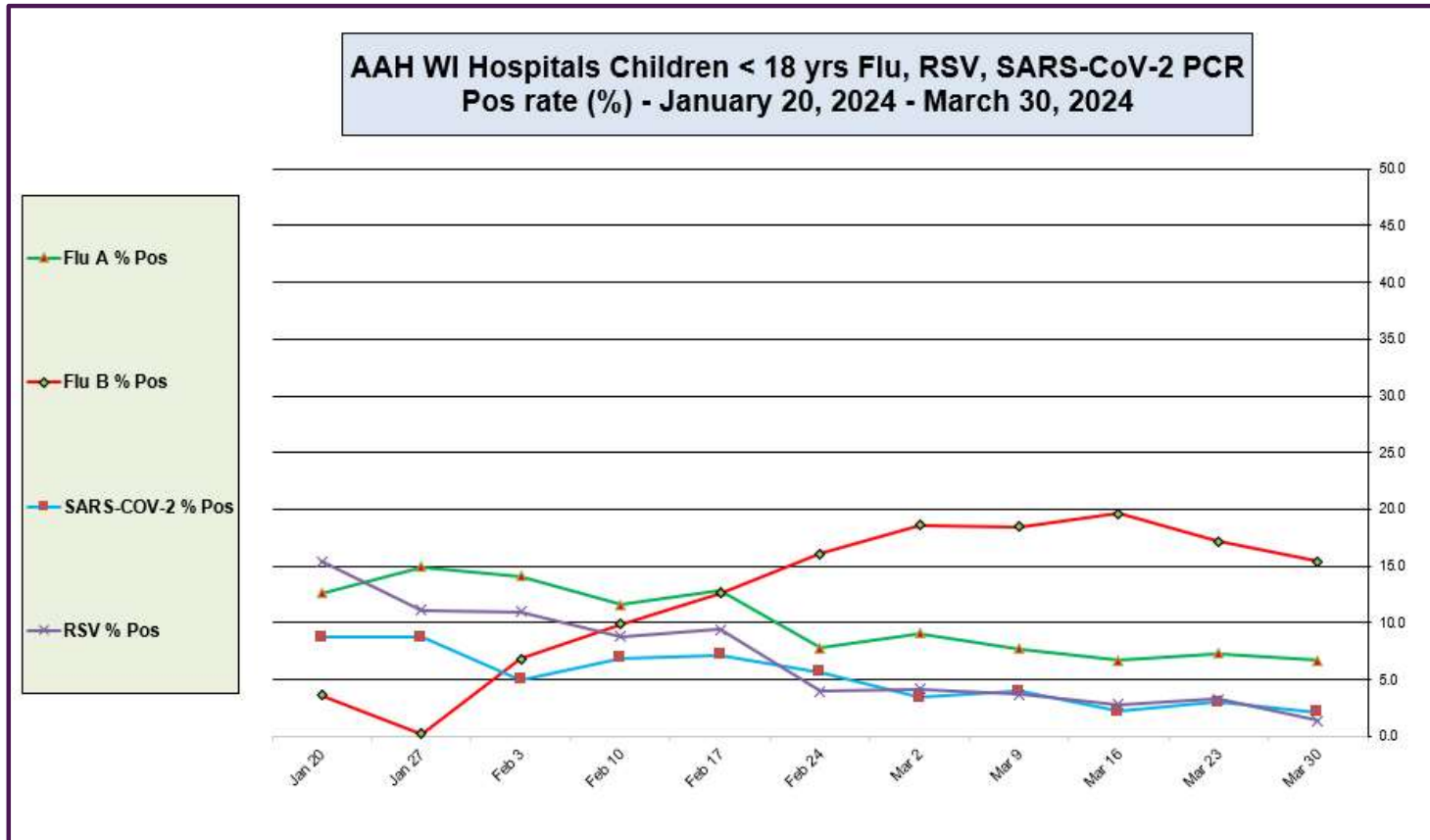
Data generated using: Rapid Respiratory Pathogen Panel (LAB9039) and COVID/FLU/RSV Panel (LAB10789)

Advocate Children's Hospital Influenza A, Influenza B, RSV, and SARS-CoV-2 PCR Positivity rates (Jan 20, 2024 – Mar 30, 2024)



Data generated using: Respiratory Pathogen Panel (LAB9955), Rapid Respiratory Pathogen Panel (LAB9039), Rapid SARS-CoV-2 by PCR (LAB10644), COVID/FLU by PCR (LAB10889), COVID/FLU/RSV Panel (LAB10789), 2019 Novel Coronavirus (SARS-CoV-2) LAB10635

AAH WI Hospitals (patients < 18 yrs old) Influenza A, Influenza B, RSV, and SARS-CoV-2 PCR Positivity rates (Jan 20, 2024 – Mar 30, 2024)



Data generated using: Respiratory Pathogen Panel (LAB9955), Rapid Respiratory Pathogen Panel (LAB9039), Rapid SARS-CoV-2 by PCR (LAB10644), COVID/FLU by PCR (LAB10889), COVID/FLU/RSV Panel (LAB10789), 2019 Novel Coronavirus (SARS-CoV-2) LAB10635