

# ACL Laboratories COVID-19 and Influenza Activity Report

Updated: March 20th, 2022



## RESPIRATORY PATHOGEN PANEL April 2021- Mar 20th , 2022 Positivity Rate (%)

MONTH	FLU A UnSub	FLU A (H1N1)	2009 H1N1	FLU A H3N2	FLU B	RSV A/B	PARA 1	PARA 2	PARA 3	PARA 4	COR 229E	COR NL63	COR OC43	COR HKU1	META	E/R	Adeno	BOCA	Legio-nella	Chla-mydia	Mycoplasma
APR	0.0	0.0	0.0	0.0	0.0	0.1	0.0	0.2	0.5	0.0	0.0	2.5	2.9	0.0	0.8	15.3	1.4	1.2	0.0	0.0	0.0
MAY	0.0	0.0	0.0	0.0	0.0	0.0	0.1	0.7	3.9	0.0	0.2	1.4	3.9	0.0	0.0	14.4	1.7	1.4	0.2	0.0	0.1
JUN	0.0	0.0	0.0	0.0	0.0	1.9	0.0	0.3	9.6	0.0	0.3	0.4	2.4	0.0	0.1	15.8	1.1	1.8	0.0	0.0	0.1
JUL	0.0	0.0	0.0	0.0	0.0	8.2	0.1	0.5	12.9	0.0	0.1	0.4	1.4	0.0	0.5	18.9	1.6	4.4	0.4	0.0	0.0
AUG	0.0	0.0	0.0	0.0	0.0	13.3	0.0	1.2	6.2	0.1	0.1	0.1	0.5	0.0	0.7	14.0	1.3	3.6	0.0	0.0	0.0
SEP	0.0	0.0	0.0	0.0	0.0	11.3	0.0	0.9	1.8	0.4	0.0	0.0	0.4	0.0	0.6	23.6	0.8	4.1	0.1	0.0	0.1
OCT	0.0	0.0	0.0	0.0	0.0	7.8	0.0	1.6	1.2	1.0	0.1	0.0	0.4	0.0	0.3	21.0	1.2	4.0	0.2	0.0	0.0
NOV	0.0	0.1	0.1	0.7	0.0	7.6	0.1	1.5	0.9	1.5	0.2	0.1	0.9	0.0	1.0	18.3	1.4	3.7	0.1	0.0	0.0
DEC	0.0	0.0	0.0	2.7	0.0	4.4	0.0	0.8	1.4	1.4	0.4	0.1	1.6	0.2	2.7	11.4	2.3	4.4	0.2	0.0	0.0
JAN 2022	0.0	0.0	0.0	1.3	0.0	1.6	0.0	0.5	0.6	0.5	0.6	0.0	1.2	0.0	3.9	4.6	1.3	1.8	0.0	0.0	0.0
FEB 2022	0.0	0.0	0.0	0.0	0.0	1.4	0.0	0.0	0.0	0.0	0.0	0.0	2.1	0.0	3.5	3.5	2.1	4.2	0.0	0.0	0.0
MAR 2022	0.0	0.0	0.0	1.5	0.0	0.9	0.0	0.1	0.5	0.3	1.1	0.6	4.1	0.0	6.1	11.6	2.0	1.3	0.0	0.0	0.0

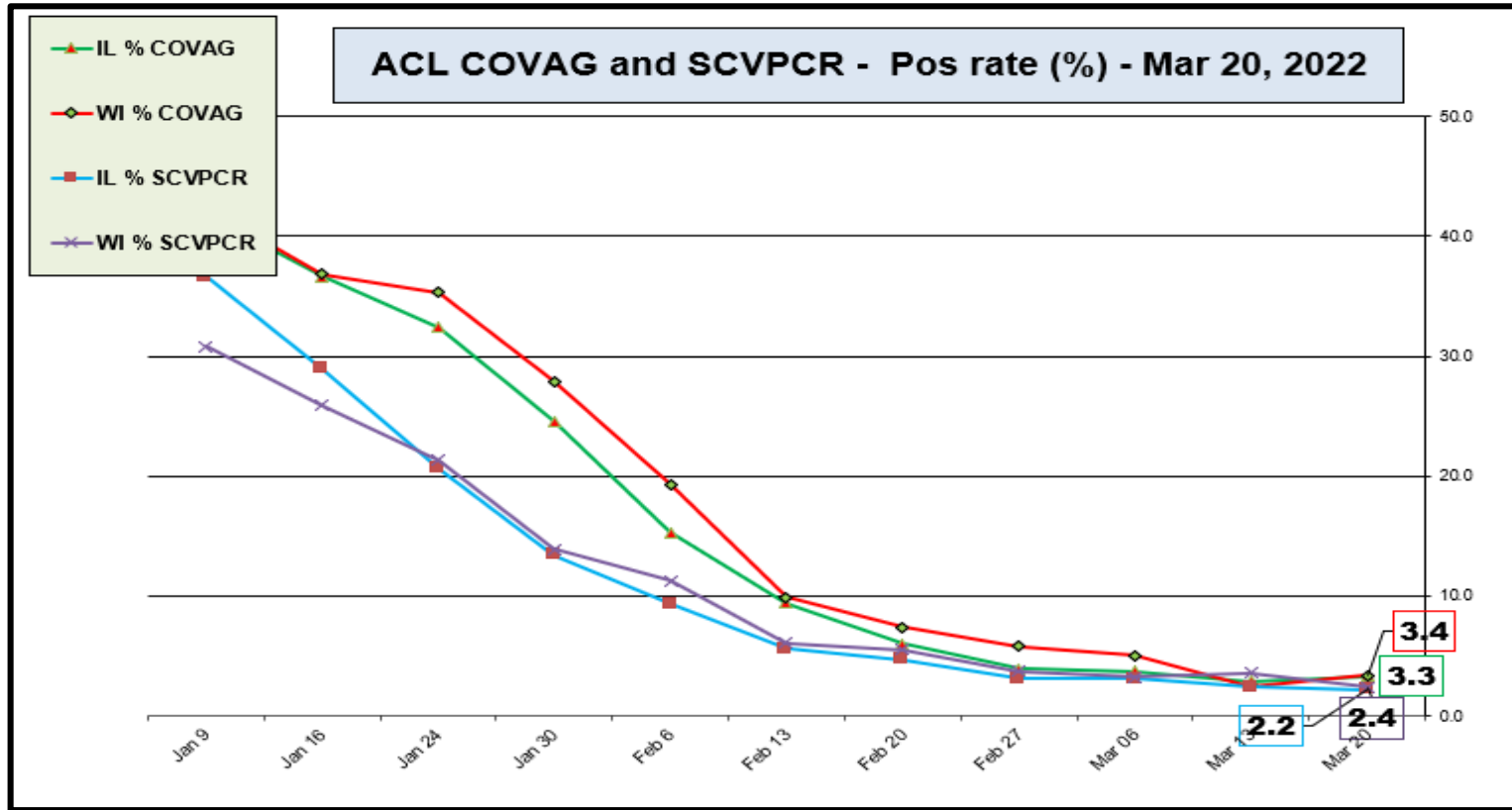
Data generated using: RPPNL (LAB9955)

## ACL SARS-CoV-2, Flu and RSV positivity rate (Jan 2022 –March 20<sup>th</sup>, 2022)

SARS-COV-2					Influenza PCR		RSV PCR		Hologic Aptima	
Week	IL % SCVPCR	WI % SCVPCR	IL % COVAG	WI % COVAG	IL % FLUPCR	WI % FLUPCR	IL % RSVPCR	WI % RSVPCR	IL % COV19	WI % COV19
Mar 20	2.2	2.4	3.3	3.4	4.1	13.7	0.7	1.0	2.0	1.7
Mar 13	2.4	3.6	2.9	2.5	1.9	11.8	0.9	1.4	1.8	1.9
Mar 06	3.1	3.2	3.7	5.0	1.5	12.6	0.3	2.0	2.9	2.7
Feb 27	3.1	3.7	3.9	5.8	1.8	12.1	0.8	1.8	3.7	4.0
Feb 20	4.7	5.5	6.0	7.4	0.9	11.1	0.8	1.5	4.6	5.5
Feb 13	5.6	6.1	9.4	9.9	0.4	7.2	0.0	0.0	5.6	8.8
Feb 6	9.3	11.3	15.3	19.3	0.8	5.5	0.4	0.9	9.0	13.2
Jan 30	13.4	13.9	24.6	27.9	0.5	3.7	0.5	1.9	13.6	19.7
Jan 24	20.6	21.3	32.4	35.3	0.4	3.6	1.0	1.4	20.8	26.6
Jan 16	28.9	25.9	36.6	36.8	1.0	2.9	1.2	3.2	28.6	31.9
Jan 9	36.6	30.8	41.8	42.3	1	4.7	1.8	2.1	35.3	35.8

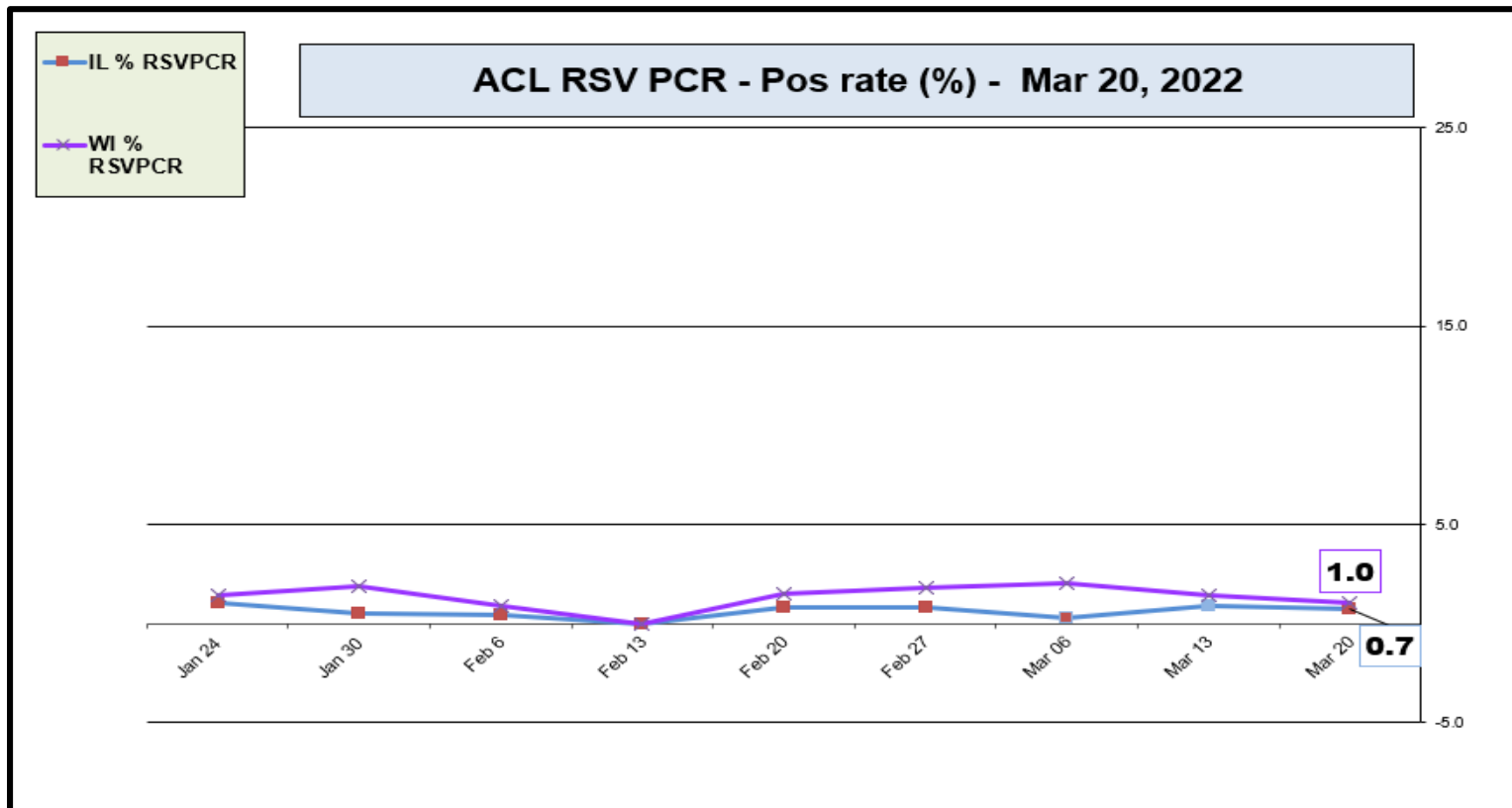
Data generated using: RAPID SARS-COV-2 BY PCR (LAB10644) COVID-19 ANTIGEN TEST (SOFIA) (LAB10715), Respiratory Pathogen Panel (LAB9955), Influenza PCR, COVID/FLU/RSV Panel (LAB10789), COVID/Flu by PCR (LAB10889), SARS-CoV-2/Influenza by PCR (LAB11071), and 2019 NOVEL CORONAVIRUS (SARS-COV-2) (LAB10635)

# ACL SARS-CoV-2 positivity rate (Jan 2022 – March 20<sup>th</sup>, 2022)



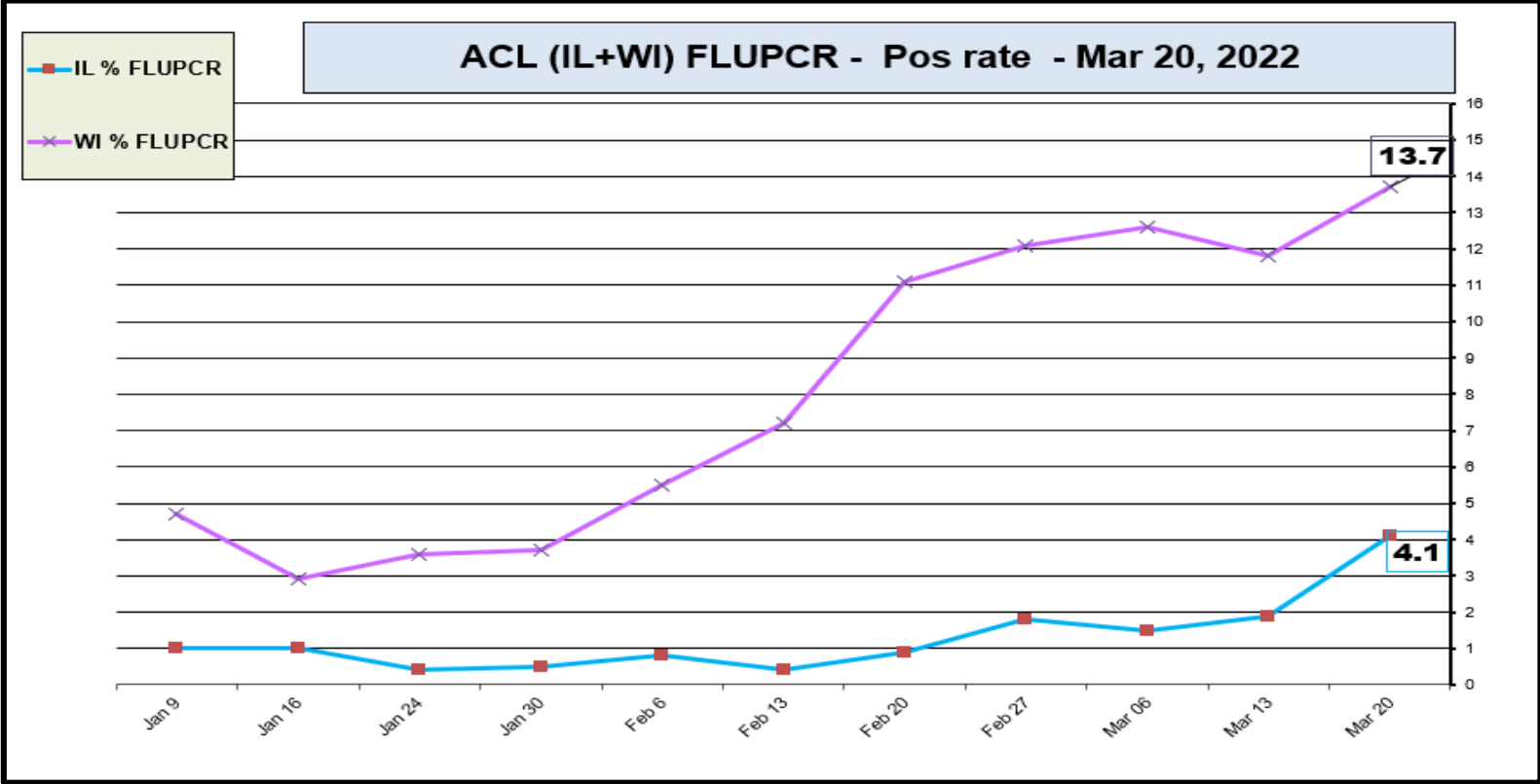
Data generated using: RAPID SARS-COV-2 BY PCR (LAB10644) COVID-19 ANTIGEN TEST (SOFIA) (LAB10715), COVID/FLU/RSV Panel (LAB10789)

# ACL RSV PCR positivity rate (Jan 2022 – March 20<sup>th</sup>, 2022)



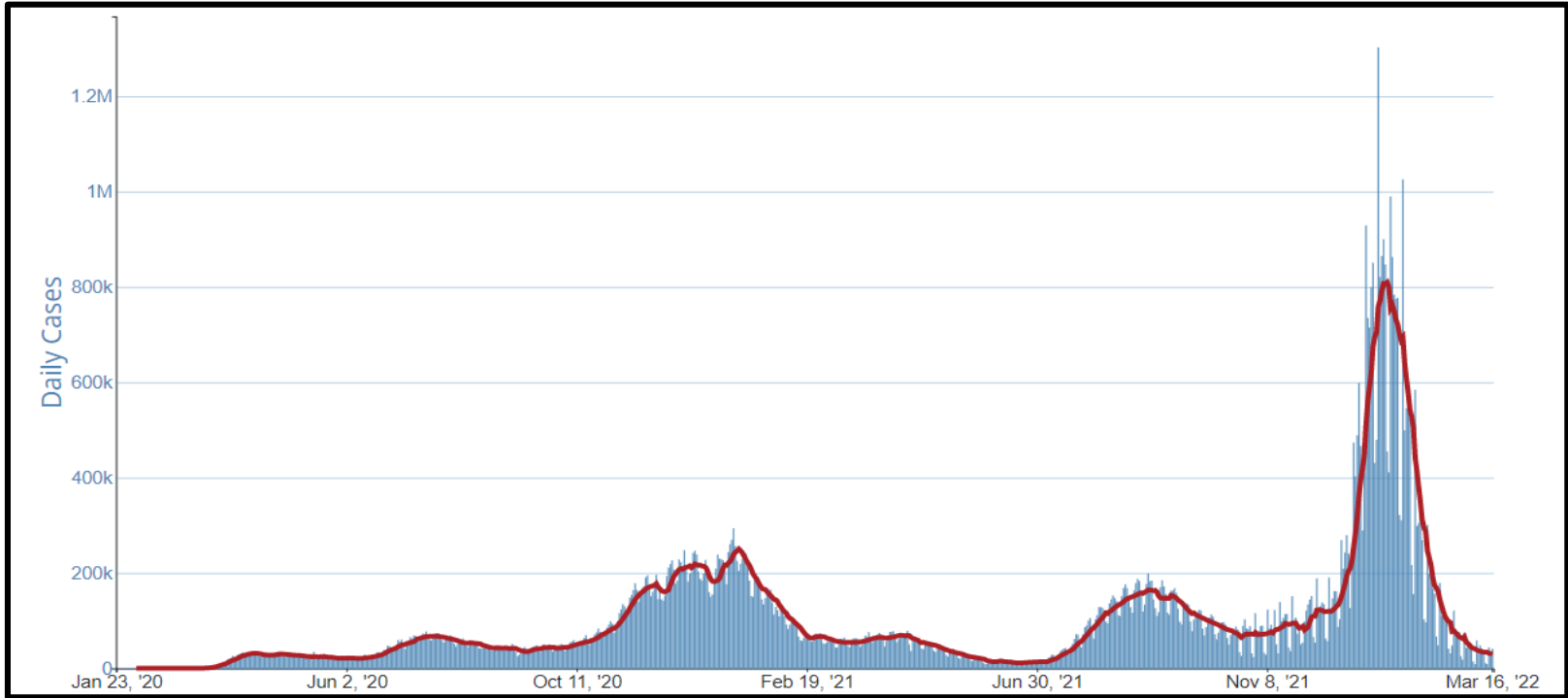
Data generated using: Respiratory Pathogen Panel (LAB9955) and COVID/FLU/RSV Panel (LAB10789)

# ACL INFLUENZA positivity rate (Jan 2022 –March 20<sup>th</sup>, 2022)



Data generated using: Respiratory Pathogen Panel (LAB9955), Influenza PCR, COVID/FLU/RSV Panel (LAB10789), COVID/Flu by PCR (LAB10889), and SARS-CoV-2/Influenza by PCR (LAB11071)

## CDC- Daily COVID-19 cases in US – Jan 23 -Mar 20, 2022

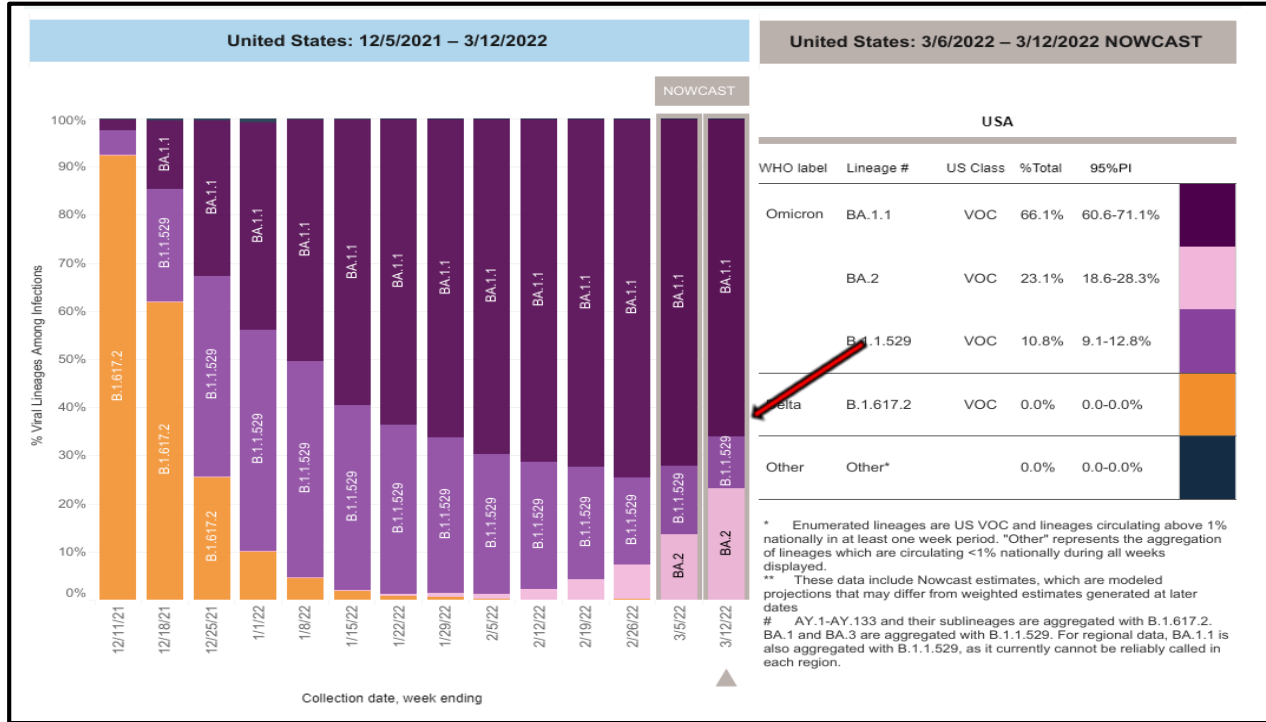


**CDC SARS-CoV-2 positivity rate - trends down**

<https://www.cdc.gov/>

# Mar 20, 2022 – SARS-CoV-2 circulating in the Midwest based on projection by Nowcast modeling

(0.0% Delta ↓, 66.1% Omicron BA 1.1 ↓, BA.1.1.529 – 10.8% ↓ BA.2 – 23.1%↑)



\*\* CDC uses **Nowcast** model that estimates more recent proportions of circulating variants (actual sequencing data is typically delayed for 2 weeks).

<https://www.cdc.gov/>

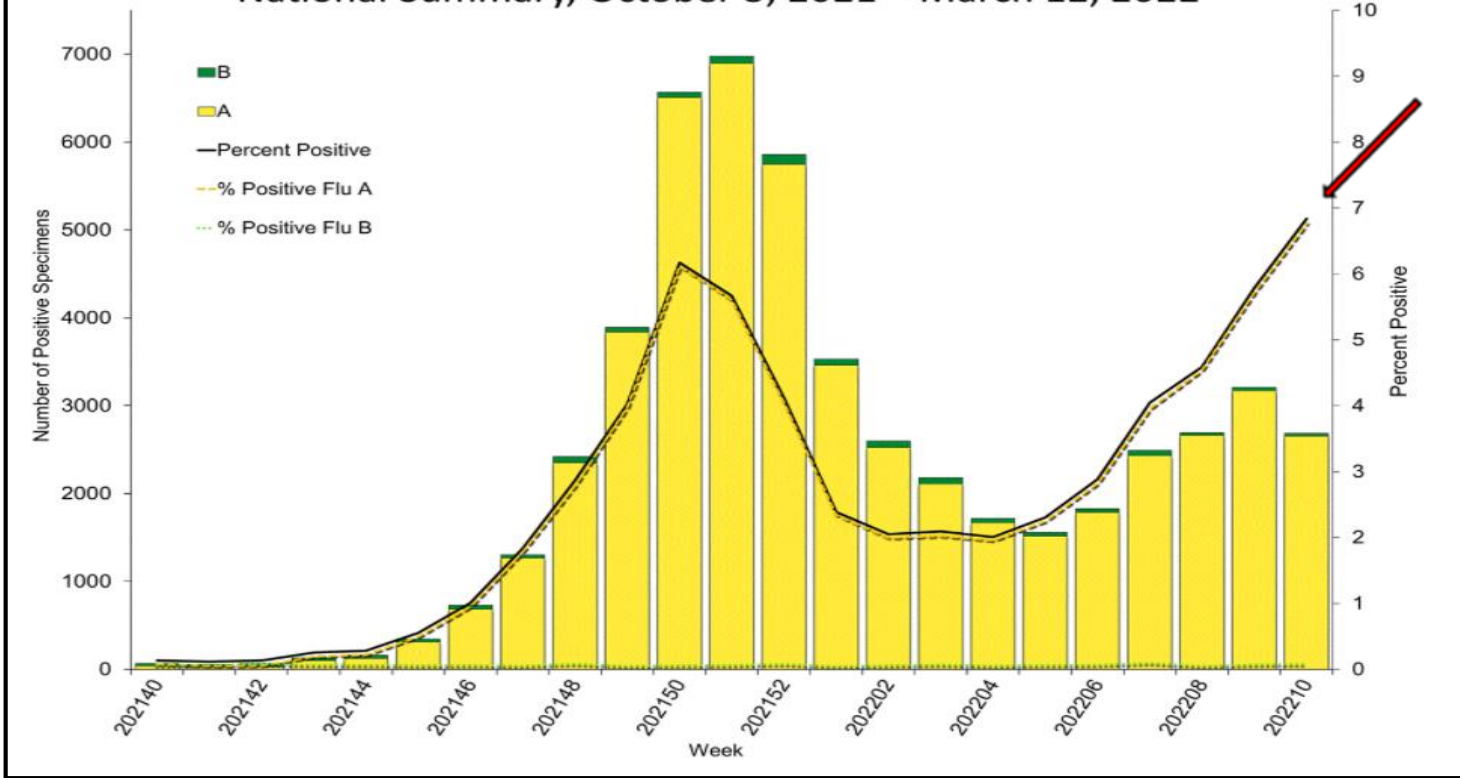


# US vaccination status CDC | Data as of: Mar 20, 2022

557,644,629 Vaccine Doses Administered	
254,750,626 People who received at least one dose	216,829,829 People who are fully vaccinated*
76.7% Percentage of the U.S. population that has received at least one dose	65.3% Percentage of the U.S. population that has been fully vaccinated*
+0.1 Percentage point increase from last week	+0.1 Percentage point increase from last week

<https://www.cdc.gov/>

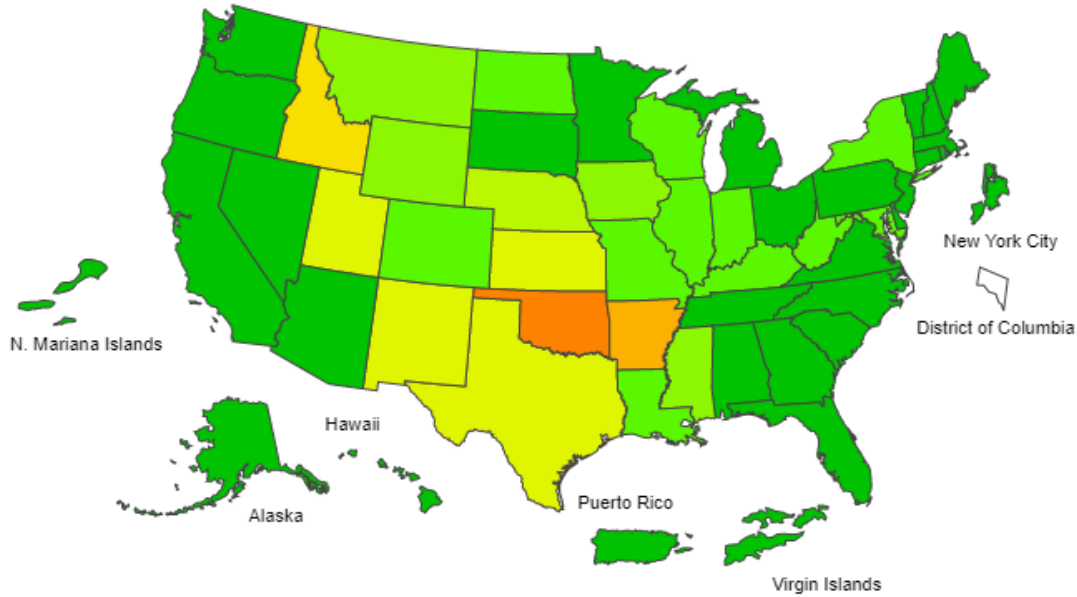
## Influenza Positive Tests Reported to CDC by U.S. Clinical Laboratories, National Summary, October 3, 2021 – March 12, 2022



<https://www.cdc.gov/>

2021-22 Influenza Season Week 10 ending Mar 12, 2022

ILI Activity Level



<https://www.cdc.gov/>