

# ACL Laboratories Respiratory Virus Activity Report

Updated: June 5, 2024

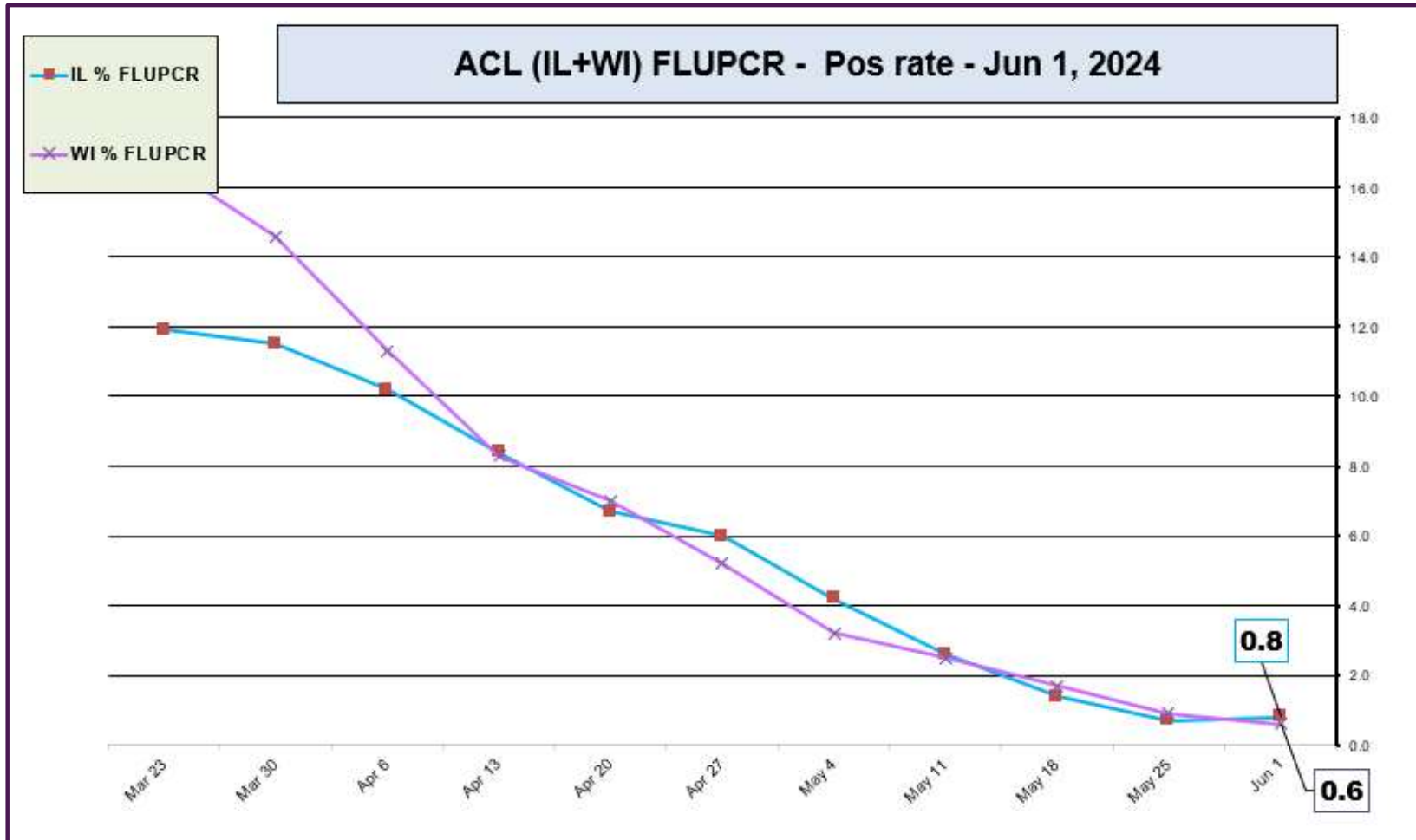


## RESPIRATORY PATHOGEN POSITIVITY RATE - JUL 2023 - JUN 1, 2024

MONTH	FLU A UnSub	FLU A (H1N1)	2009 H1N1	FLU A H3N2	FLU B	RSV A/B	PARA 1	PARA 2	PARA 3	Para 4	COR 229E	COR NL63	COR OC43	COR HKU1	SARS-CoV-2	Human META	E/R	Adeno	BOCA	Chlamydo phila	Mycoplasma	B. pertussis	B. paraper	Legionella # Pos
JUN 2024	1.3	0.0	0.0	0.9	0.0	0.3	0.0	0.0	6.4	1.8	0.0	0.9	0.0	0.0	4.8	4.5	16.4	1.8	N/A	0.0	0.9	0.0	0.0	0
MAY 2024	0.8	0.0	0.2	0.2	0.8	0.5	0.1	0.0	8.3	0.3	0.5	0.6	0.3	0.2	2.7	7.0	15.5	2.4	N/A	0.0	0.3	0.1	0.0	1
APR 2024	2.8	0.0	0.5	0.4	4.6	1.0	0.0	0.0	5.6	0.1	1.1	0.8	1.2	0.3	3.1	9.5	13.6	3.1	N/A	0.0	0.3	0.2	0.1	0
MAR 2024	5.8	0.0	1.9	0.7	9.4	1.8	0.0	0.0	1.9	0.1	1.4	0.7	2.1	1.5	4.3	7.9	12.6	3.2	N/A	0.0	0.0	0.0	0.0	0
FEB 2024	8.4	0.0	3.0	1.1	6.0	3.3	0.0	0.0	0.5	0.1	1.3	0.2	4.8	1.5	8.7	3.0	12.7	4.1	N/A	0.0	0.2	0.0	0.3	0
JAN 2024	11.0	0.0	4.3	1.2	1.6	7.1	0.2	0.1	0.4	0.2	0.4	0.0	3.4	0.4	10.5	1.2	7.1	5.2	N/A	0.0	0.4	N/A	N/A	0
DEC 2023	11.2	0.0	2.8	1.2	0.8	10.3	0.9	0.3	0.0	0.5	0.2	0.1	2.7	0.4	14.4	0.8	12.7	5.6	N/A	0.0	0.6	N/A	N/A	0
NOV 2023	2.6	0.0	0.5	0.5	0.3	10.2	1.6	0.6	0.4	0.9	0.0	0.0	0.4	0.1	12.5	0.4	16.8	5.7	0.0	0.0	0.5	N/A	N/A	0
OCT 2023	0.6	0.0	0.2	0.0	0.1	4.0	2.4	0.8	0.3	1.0	0.1	0.1	0.2	0.0	8.9	0.5	19.1	2.6	0.3	0.0	0.4	N/A	N/A	2
SEP 2023	0.4	0.0	0.1	0.0	0.2	0.9	1.2	1.0	0.4	0.4	0.0	0.0	0.1	0.0	11.7	0.7	24.0	1.8	0.5	0.0	0.1	N/A	N/A	1
AUG 2023	0.5	0.0	0.4	0.0	0.2	0.5	0.4	1.4	1.6	0.5	0.0	0.0	0.7	0.0	12.4	2.9	13.3	2.3	0.4	0.0	0.0	N/A	N/A	0
JUL 2023	0.6	0.0	0.0	0.1	0.2	0.4	1.2	1.7	1.5	0.9	0.0	0.3	0.0	0.0	6.5	3.1	11.1	2.4	0.2	0.0	0.0	N/A	N/A	4

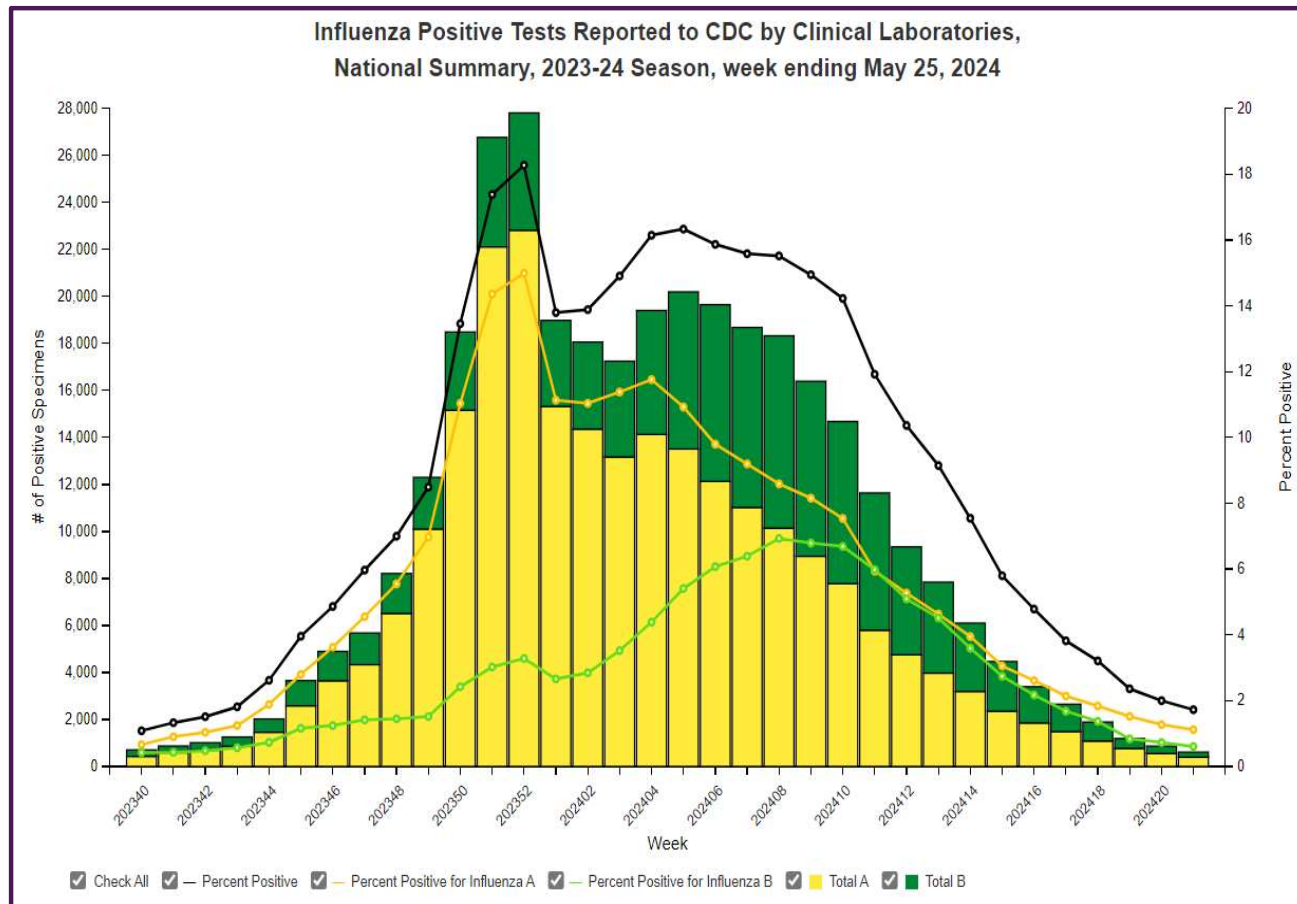
Data generated using: Respiratory Pathogen Panel (prior to 10/16/23), Rapid Respiratory Pathogen Panel (beginning 10/16/23), RAPID SARS-COV-2 BY PCR (LAB10644), COVID/FLU/RSV Panel (LAB10789) , Rapid COVID/FLU PCR Panel (LAB10889),

## ACL INFLUENZA positivity rate (Mar 23, 2024 – Jun 1, 2024)



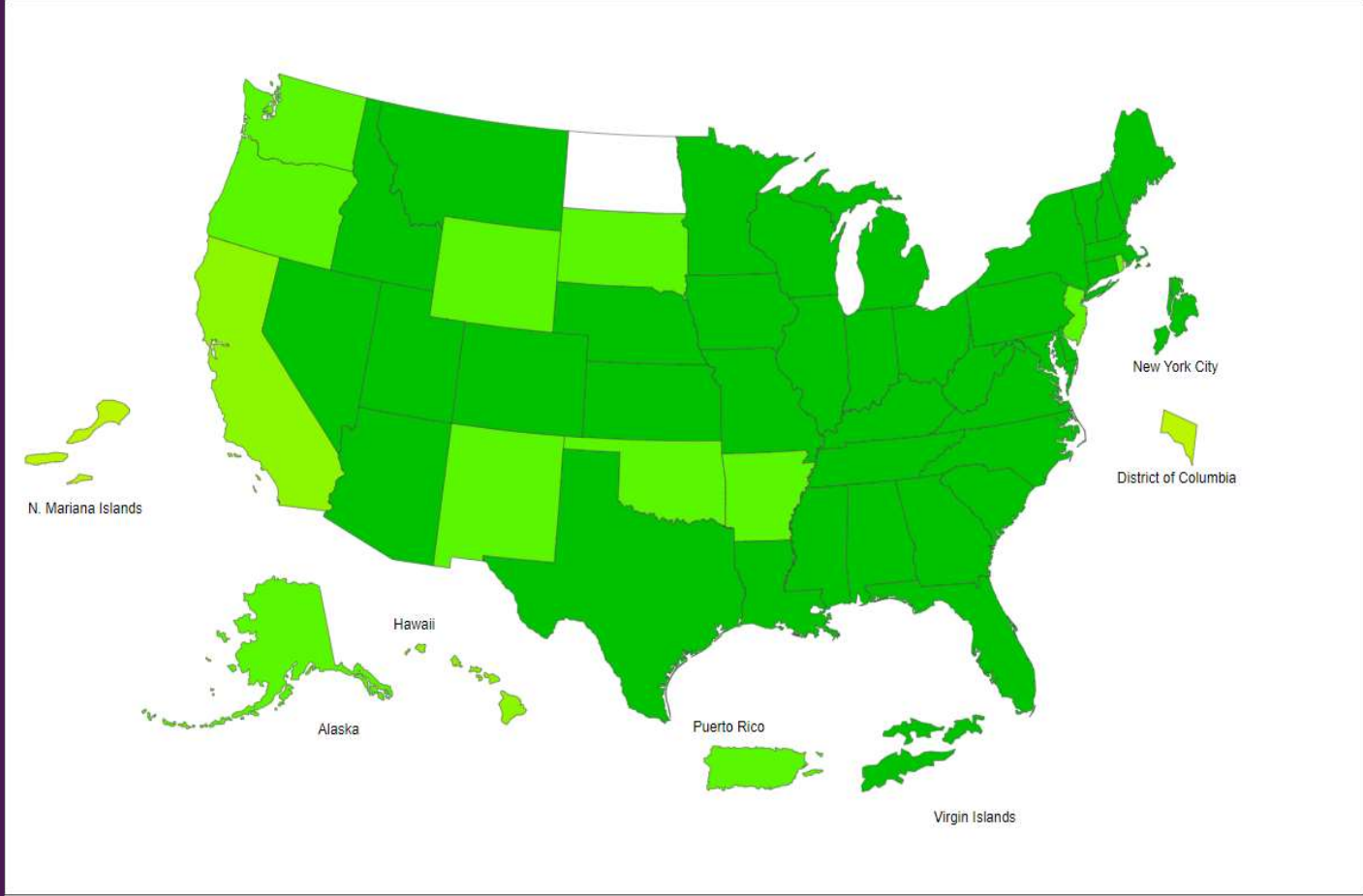
Data generated using: Rapid Respiratory Pathogen Panel (LAB9039), Influenza PCR, COVID/FLU/RSV Panel (LAB10789), COVID/Flu by PCR (LAB10889), and SARS-CoV-2/Influenza by PCR (LAB11071)

# US National Influenza Positivity Rates – Week 21 ending May 25, 2024

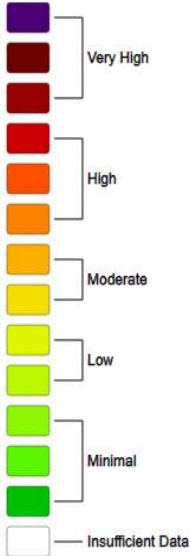


<https://www.cdc.gov/>

2023-24 Influenza Season Week 21 ending May 25, 2024

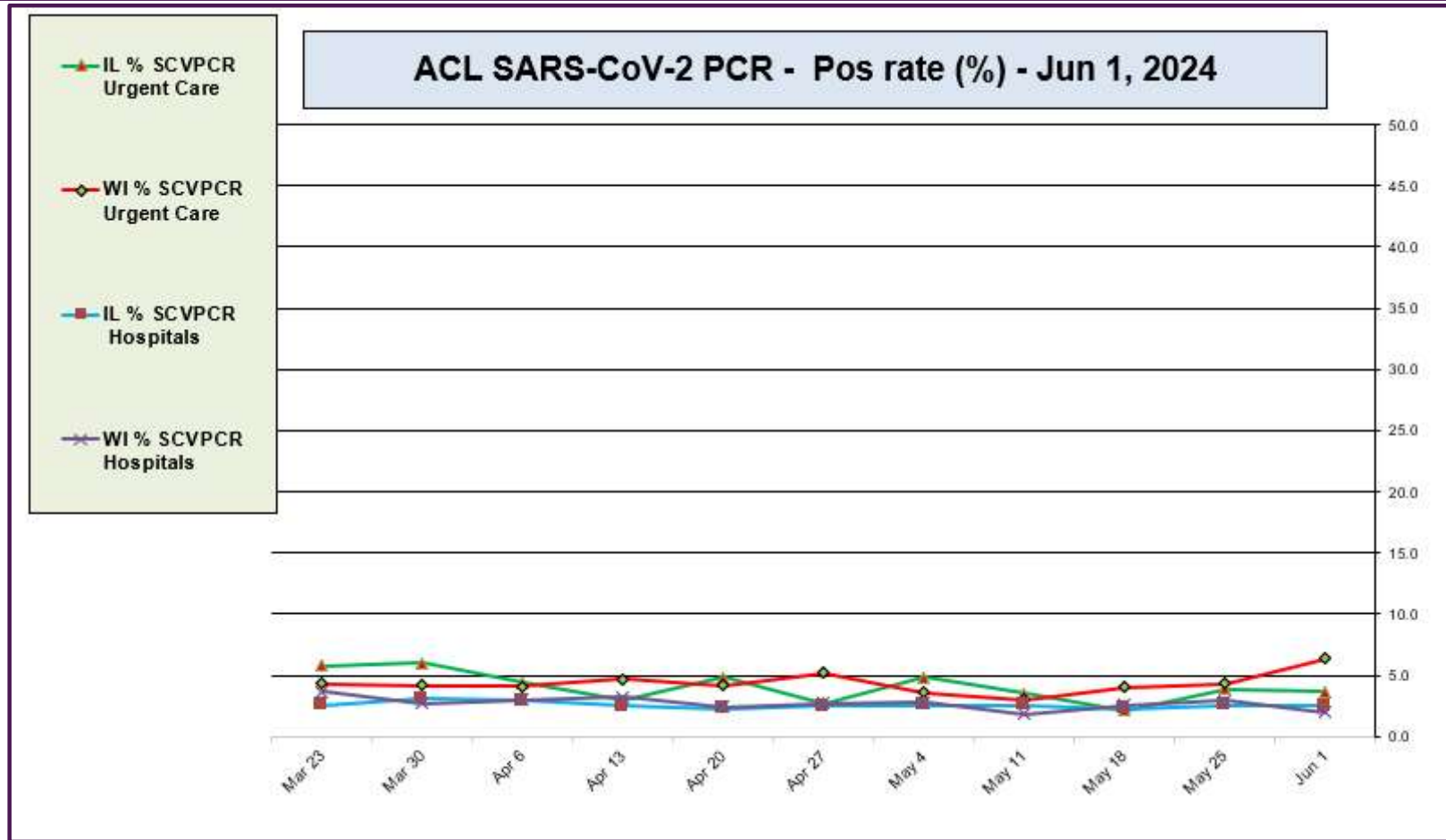


ILI Activity Level



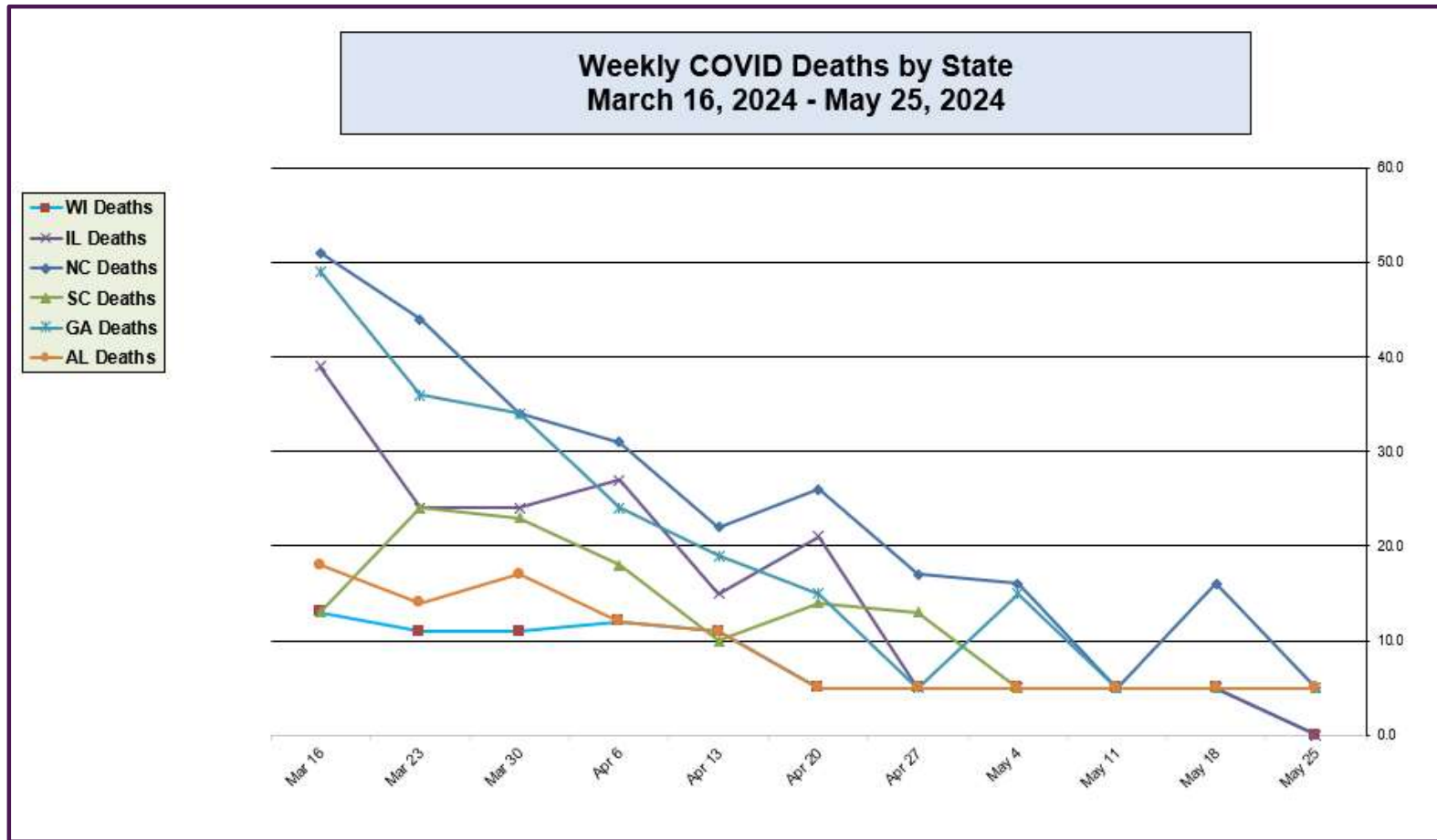
<https://www.cdc.gov/>

## ACL SARS-CoV-2 positivity rate (Mar 23, 2024 – Jun 1, 2024)



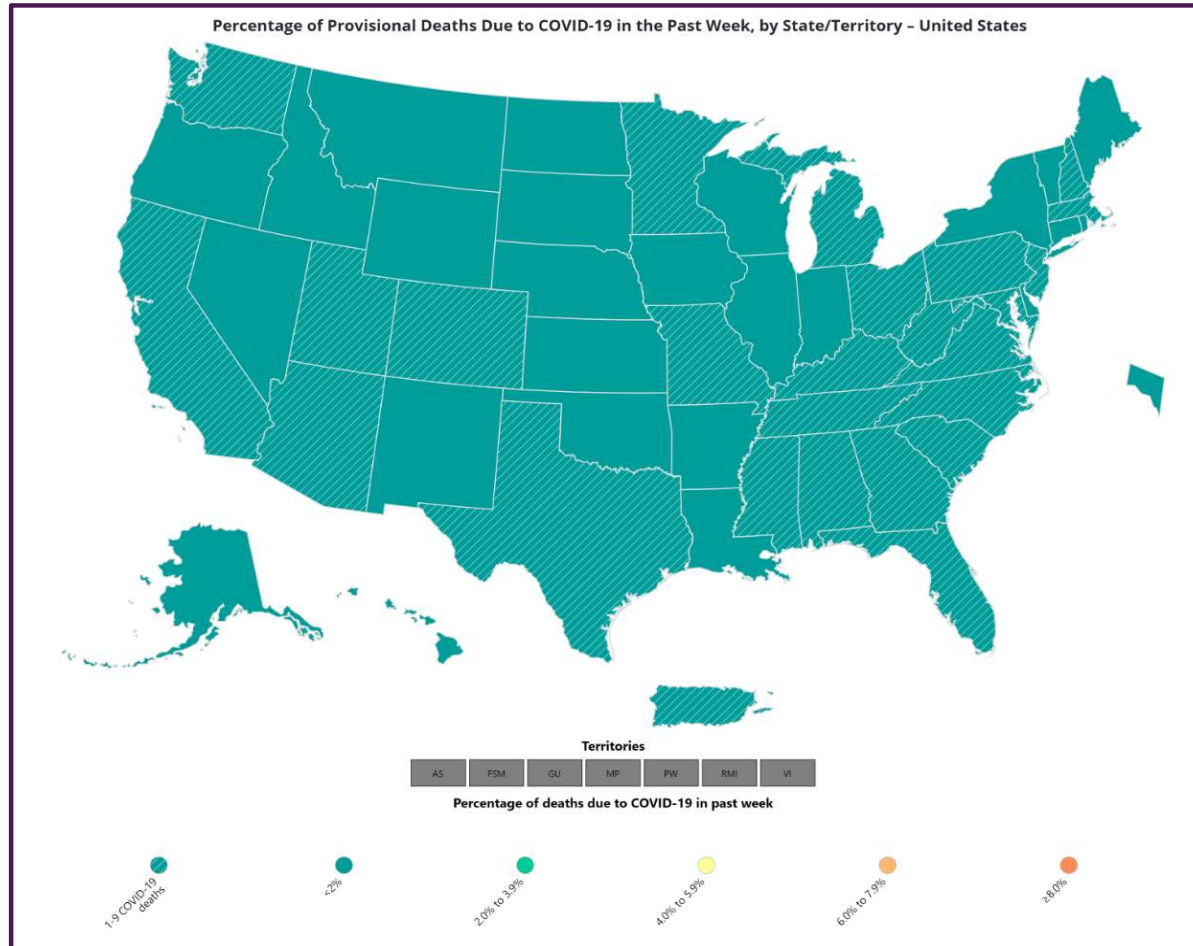
Data generated using: RAPID SARS-COV-2 BY PCR (LAB10644), COVID/FLU/RSV Panel (LAB10789) , prior to 9/17 COVID-19 ANTIGEN TEST (SOFIA) (LAB10715) , post 9/17 LAB10644 performed at WI and IL urgent cares sites, and Rapid Respiratory Pathogen Panel (LAB9039)

## COVID Deaths by State from CDC Data (Mar 16, 2024 – May 25, 2024)



Data generated from: [https://covid.cdc.gov/covid-data-tracker/#trends\\_weeklydeaths\\_select\\_00](https://covid.cdc.gov/covid-data-tracker/#trends_weeklydeaths_select_00)

# % of Weekly Deaths COVID Attributed to COVID-19 (Week Ending May 25, 2024)

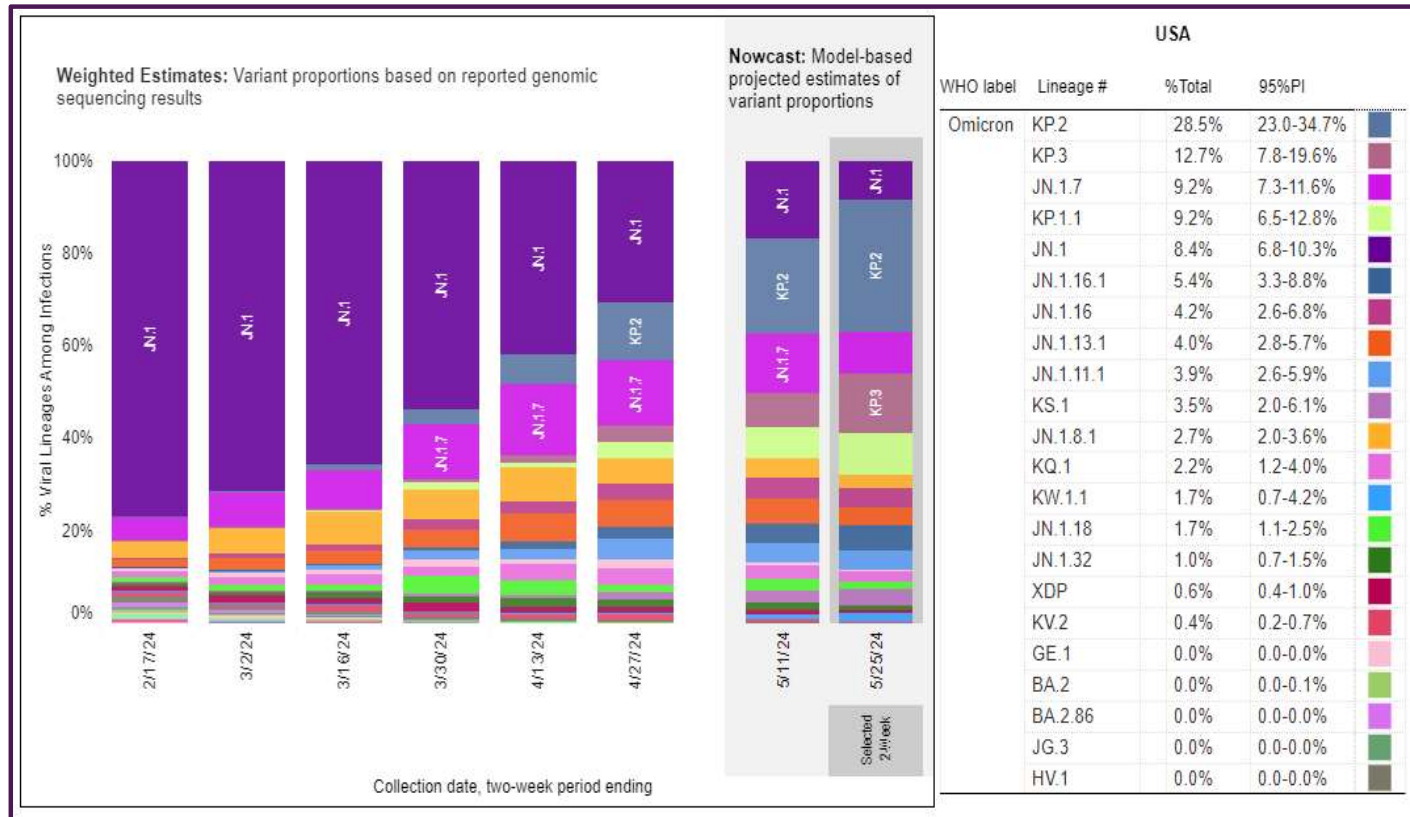


Data generated from: [https://covid.cdc.gov/covid-data-tracker/#maps\\_percent-covid-deaths](https://covid.cdc.gov/covid-data-tracker/#maps_percent-covid-deaths)



# May 25, 2024 – TOP 5 SARS-CoV-2 Strains circulating in the Midwest by Nowcast modeling

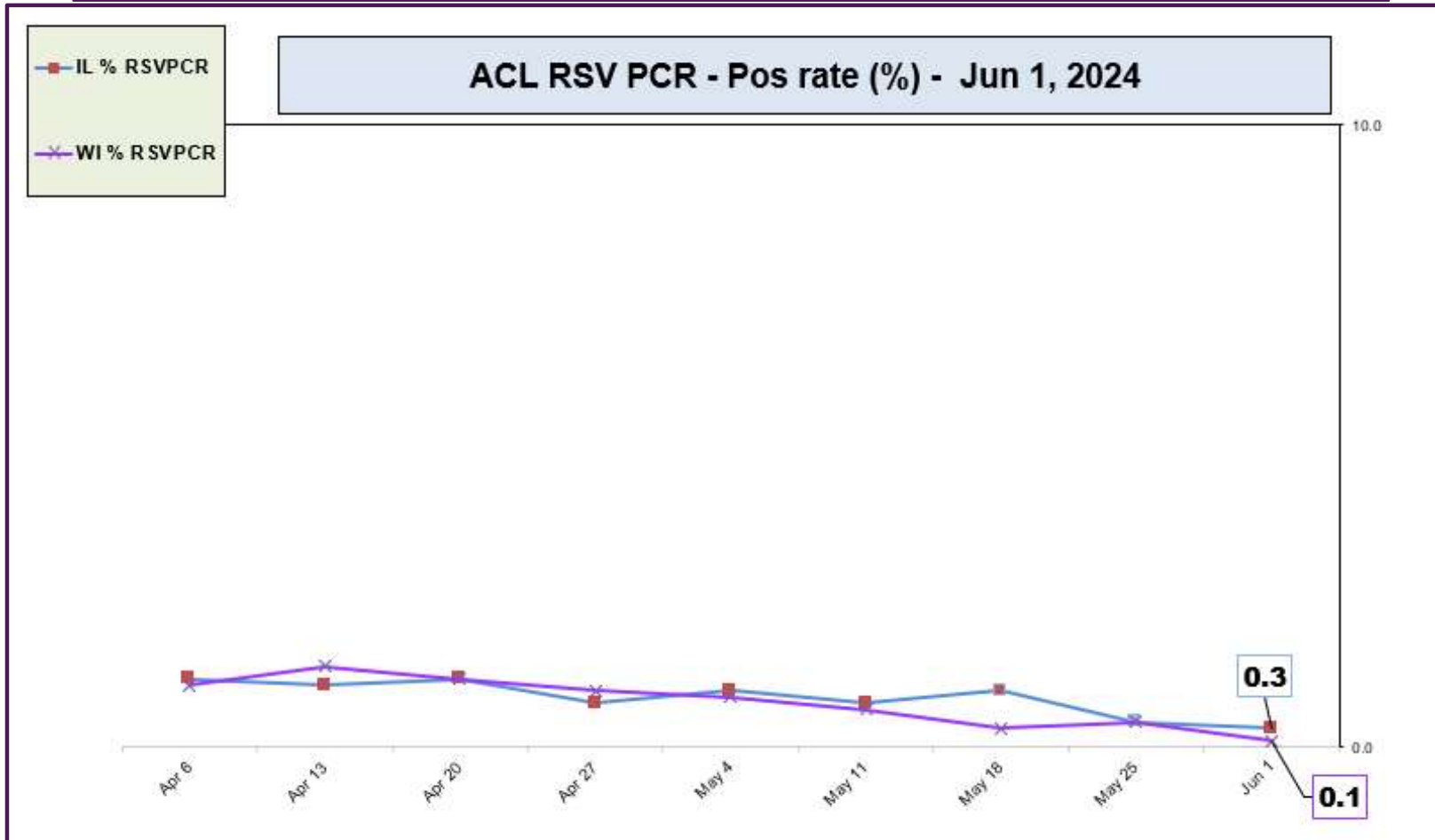
(Omicron **KP.2** 28.5% ↑, **KP.3** 12.7% ↑, **JN.1.7** 9.2% ↓, **KP.1.1** 9.2% ↑, **JN.1** 8.4% ↓)



\*\* CDC uses **Nowcast** model that estimates more recent proportions of circulating variants (actual sequencing data is typically delayed for 2 weeks).

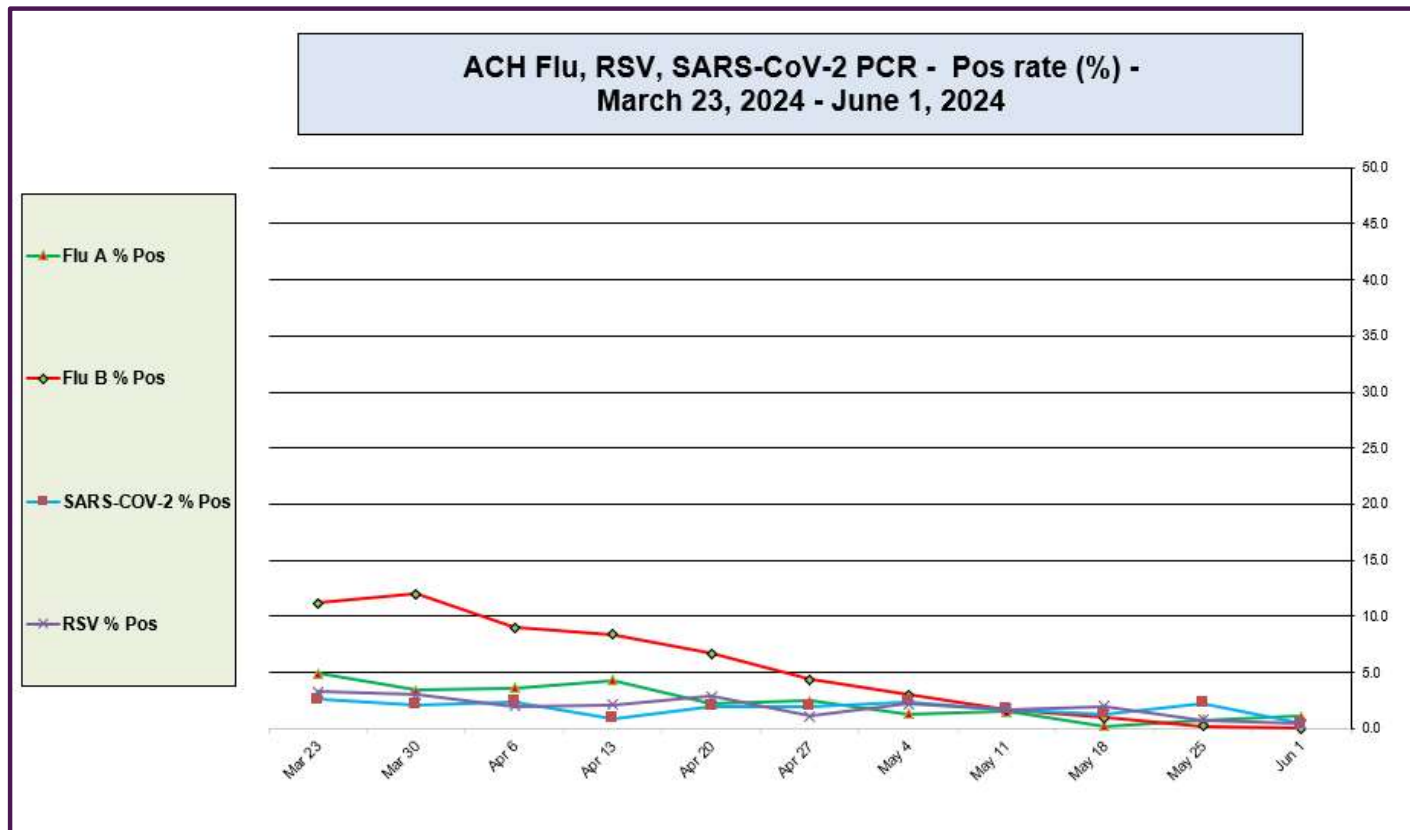
<https://www.cdc.gov/>

## ACL RSV PCR positivity rate (Apr 6, 2024 – Jun 1, 2024)



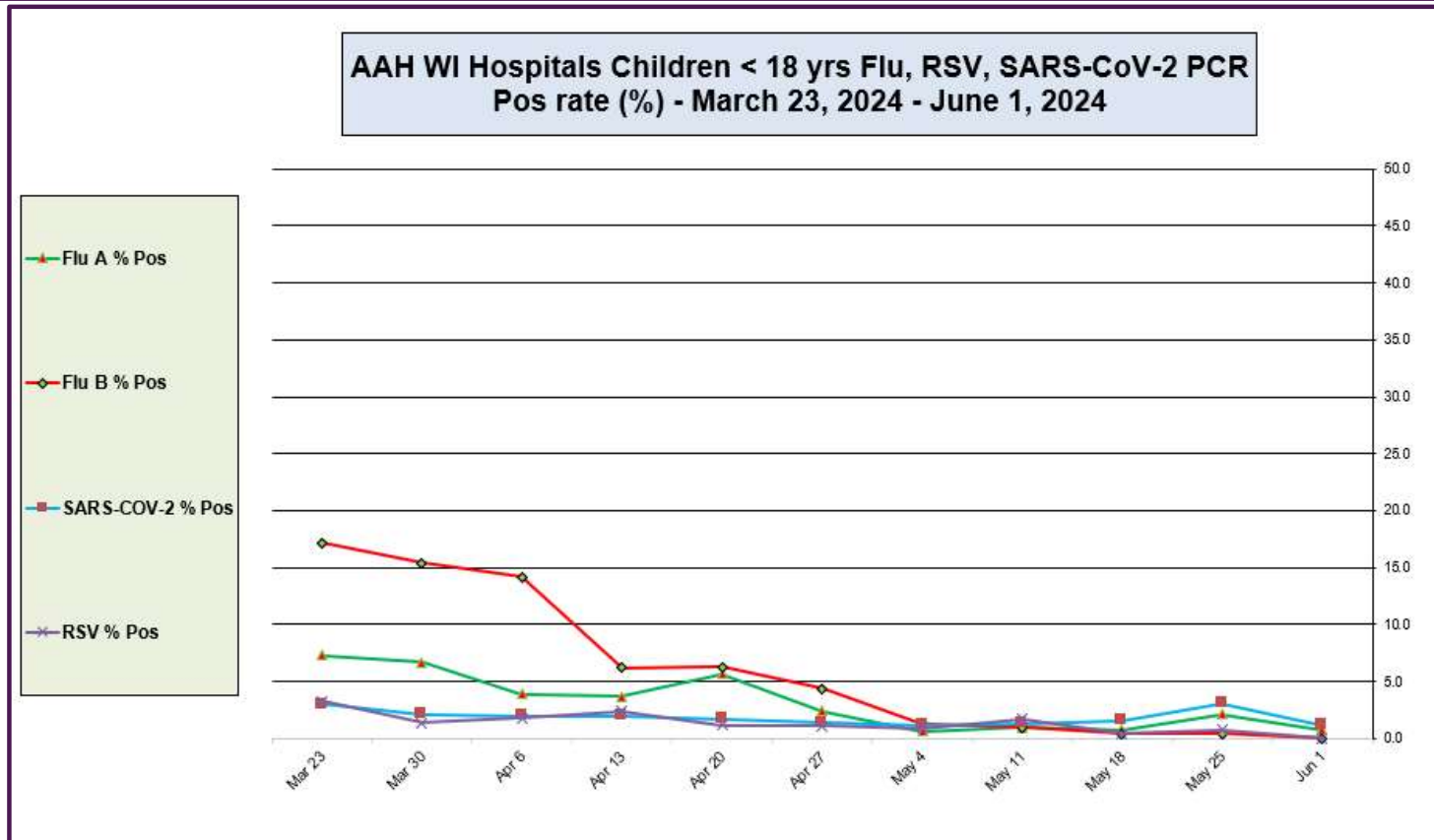
Data generated using: Rapid Respiratory Pathogen Panel (LAB9039) and COVID/FLU/RSV Panel (LAB10789)

## Advocate Children's Hospital Influenza A, Influenza B, RSV, and SARS-CoV-2 PCR Positivity rates (Mar 23, 2024 – Jun 1, 2024)



**Data generated using:** Respiratory Pathogen Panel (LAB9955), Rapid Respiratory Pathogen Panel (LAB9039), Rapid SARS-CoV-2 by PCR (LAB10644), COVID/FLU by PCR (LAB10889), COVID/FLU/RSV Panel (LAB10789), 2019 Novel Coronavirus (SARS-CoV-2) LAB10635

# AAH WI Hospitals (patients < 18 yrs old) Influenza A, Influenza B, RSV, and SARS-CoV-2 PCR Positivity rates (Mar 23, 2024 – Jun 1, 2024)



Data generated using: Respiratory Pathogen Panel (LAB9955), Rapid Respiratory Pathogen Panel (LAB9039), Rapid SARS-CoV-2 by PCR (LAB10644), COVID/FLU by PCR (LAB10889), COVID/FLU/RSV Panel (LAB10789), 2019 Novel Coronavirus (SARS-CoV-2) LAB10635