

ACL Laboratories Respiratory Virus Activity Report

Updated: April 26, 2023

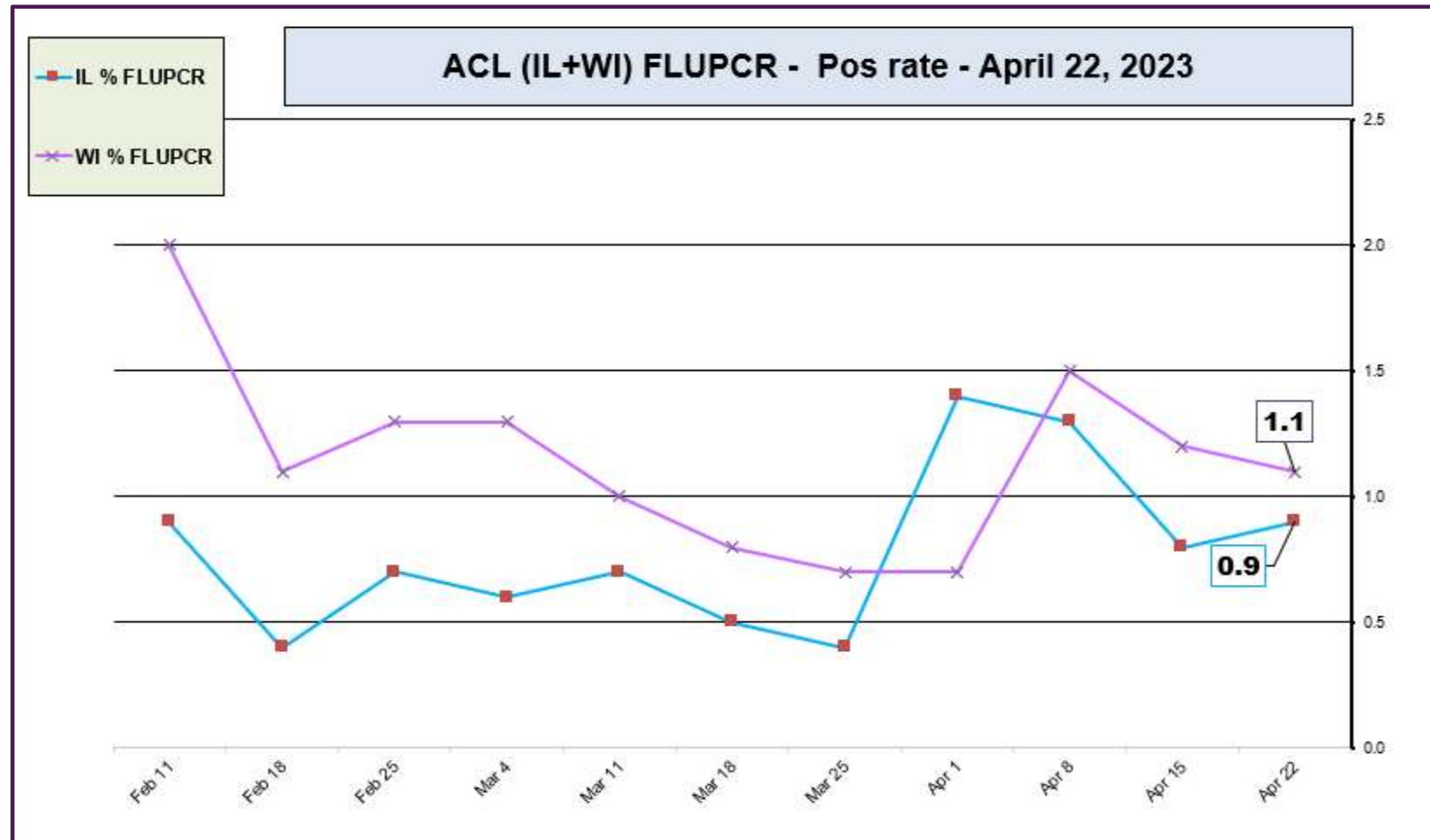


RESPIRATORY PATHOGEN PANEL MAY 2022 - APRIL 26, 2023 Positivity Rate (%)

MONTH	FLU A UnSub	FLU A (H1N1)	2009 H1N1	FLU A H3N2	FLU B	RSV A/B	PARA 1	PARA 2	PARA 3	PARA 4	COR 229E	COR NL63	COR OC43	COR HKU1	META	ENTERO/ RHINO	Adeno	BOCA	Legio- nella	Chla- mydia	Myco- plasma
APR 2023	0.0	0.0	0.2	0.1	0.2	0.2	0.2	0.5	5.2	0.1	0.3	1.0	0.2	0.5	12.4	11.5	3.1	0.9	0.1	0.0	0.0
MAR 2023	0.1	0.0	0.1	0.0	0.1	0.2	0.4	0.1	2.7	0.0	0.3	1.9	0.8	0.8	13.3	13.1	3.2	1.4	0.0	0.0	0.0
FEB 2023	0.0	0.0	0.2	0.1	0.0	0.5	0.0	0.4	1.2	0.2	0.0	3.7	1.5	1.6	9.3	13.2	3.7	1.6	0.0	0.0	0.0
JAN 2023	0.2	0.0	0.5	0.5	0.1	1.2	0.7	0.1	0.8	0.3	0.2	1.2	2.0	1.4	5.9	12.1	3.3	2.9	0.0	0.0	0.0
DEC 2022	0.3	0.1	1.0	7.0	0.1	3.6	1.1	0.2	0.5	1.5	0.3	0.6	1.7	1.3	2.1	11.7	2.9	4.0	0.1	0.1	0.1
NOV 2022	0.3	0.0	0.5	5.6	0.0	8.1	1.6	0.5	0.8	1.4	0.1	0.1	0.5	0.0	0.8	13.0	2.6	3.3	0.0	0.0	0.0
OCT 2022	0.1	0.0	0.2	0.8	0.0	10.0	2.1	0.4	0.5	3.5	0.0	0.1	0.1	0.1	0.7	18.2	2.4	2.6	0.0	0.0	0.0
SEP 2022	0.0	0.0	0.0	0.0	0.0	4.1	0.9	0.0	0.4	2.3	0.1	0.1	0.1	0.0	0.3	22.8	0.9	0.9	0.1	0.0	0.0
AUG 2022	0.0	0.0	0.0	0.1	0.0	1.6	0.7	0.0	0.8	1.1	0.2	0.0	0.0	0.0	0.5	15.2	2.0	2.1	0.2	0.0	0.0
JUL 2022	0.0	0.0	0.0	0.1	0.0	1.7	0.2	0.1	3.3	0.7	0.0	0.1	0.3	0.2	1.6	9.7	2.1	0.7	0.0	0.0	0.0
JUN 2022	0.0	0.0	0.0	0.4	0.0	1.8	0.5	0.2	9.5	1.0	0.0	0.2	0.5	0.1	3.6	12.6	1.7	0.5	0.2	0.0	0.0
MAY 2022	0.0	0.0	0.0	1.4	0.0	0.6	0.0	0.2	7.3	0.7	1.2	0.9	2.4	0.2	6.7	11.1	1.8	0.7	0.0	0.0	0.0

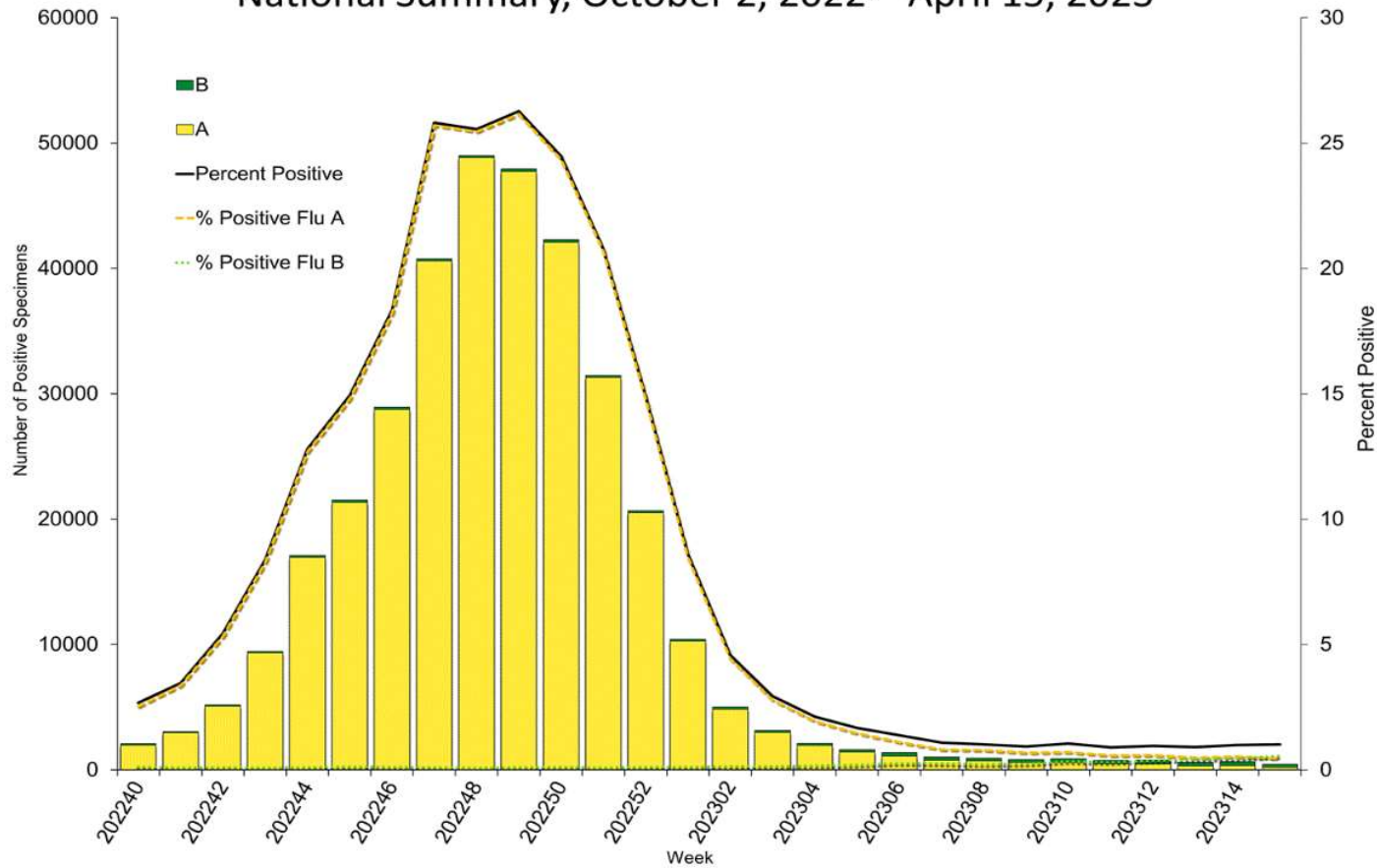
Data generated using: RPPNL (LAB9955)

ACL INFLUENZA positivity rate (Feb 11, 2023 – Apr 22, 2023)



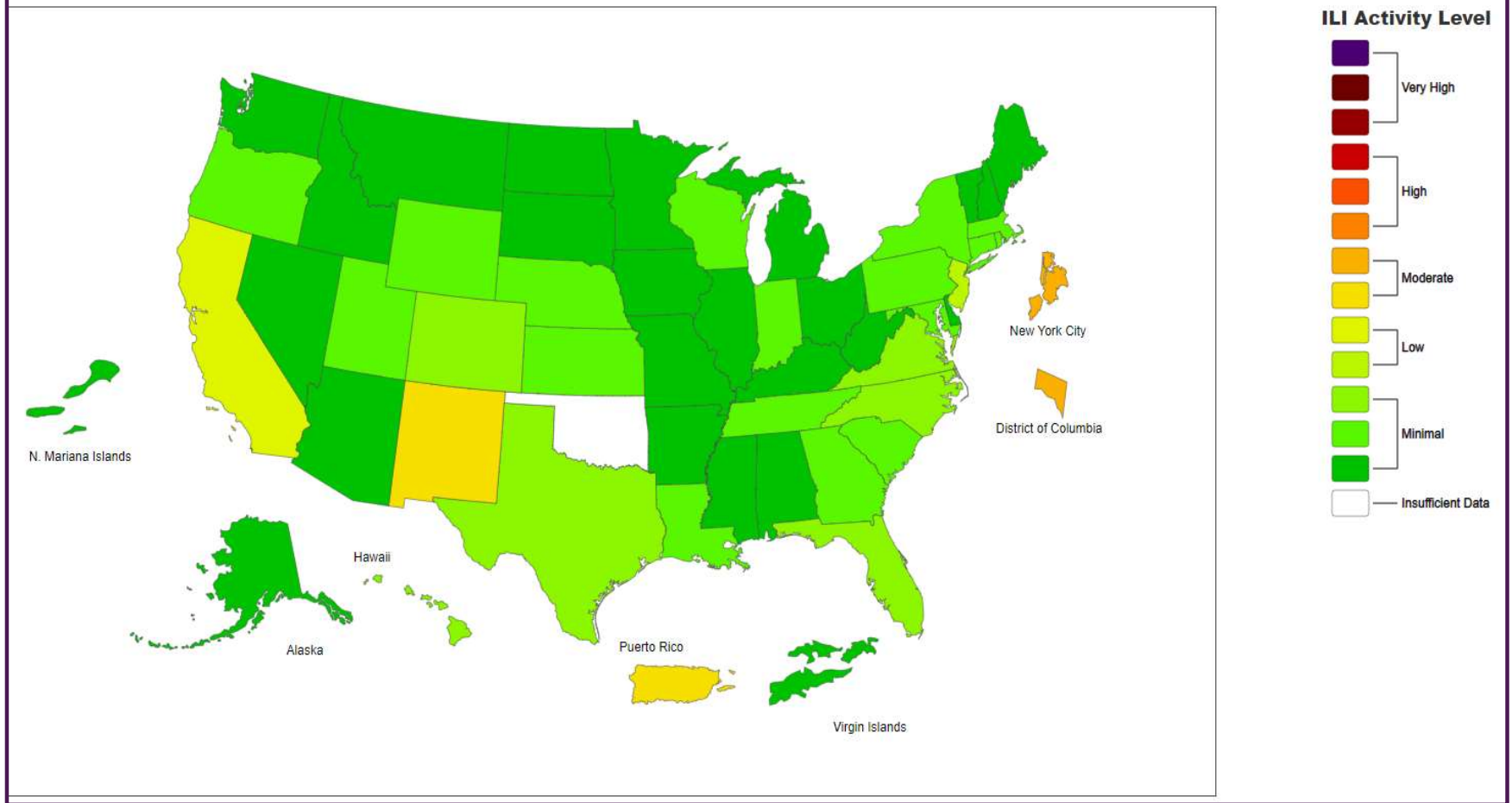
Data generated using: Respiratory Pathogen Panel (LAB9955), Influenza PCR, COVID/FLU/RSV Panel (LAB10789), COVID/Flu by PCR (LAB10889), and SARS-CoV-2/Influenza by PCR (LAB11071)

Influenza Positive Tests Reported to CDC by U.S. Clinical Laboratories, National Summary, October 2, 2022 – April 15, 2023



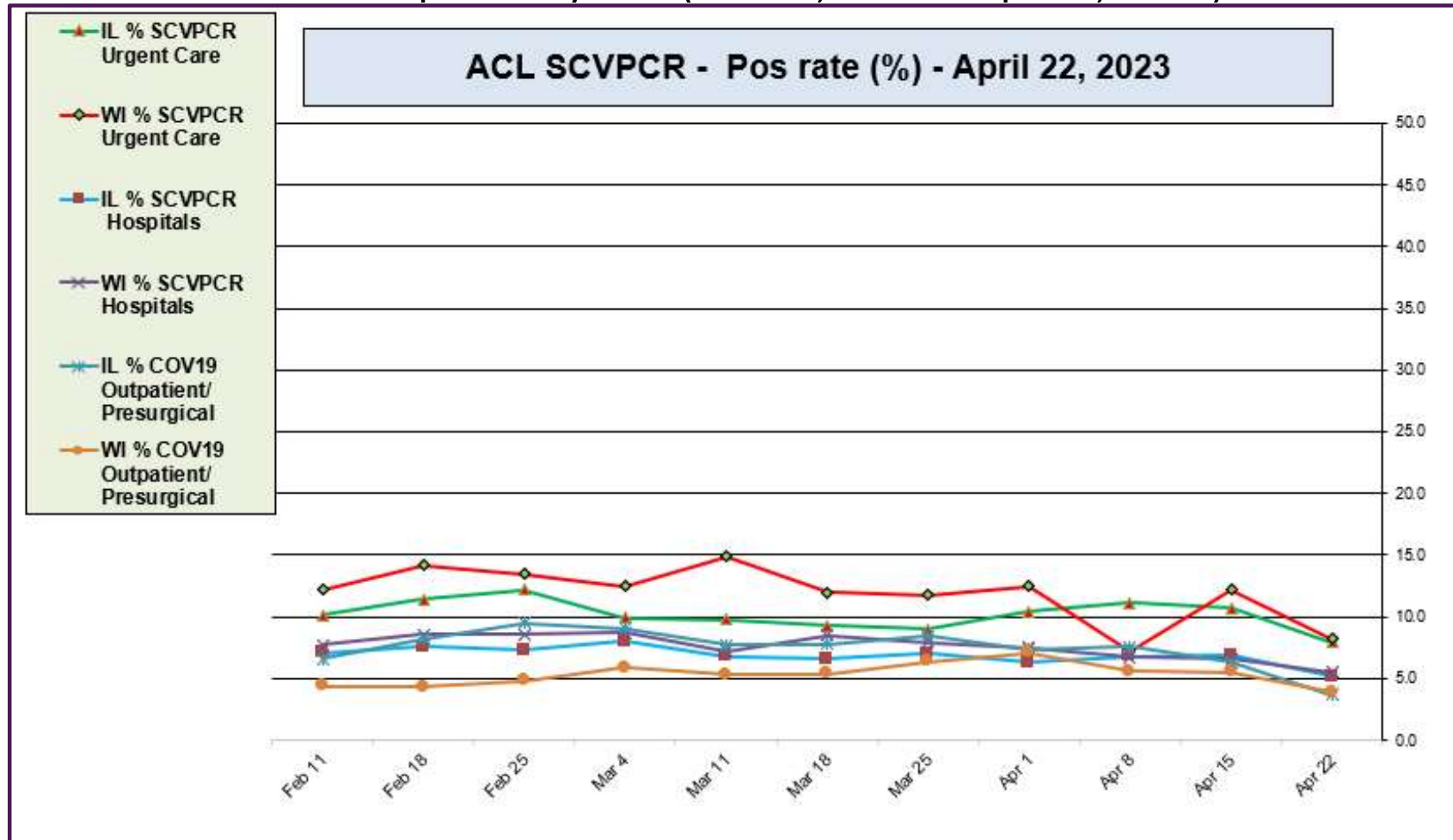
<https://www.cdc.gov/>

2022-23 Influenza Season Week 15 ending Apr 15, 2023



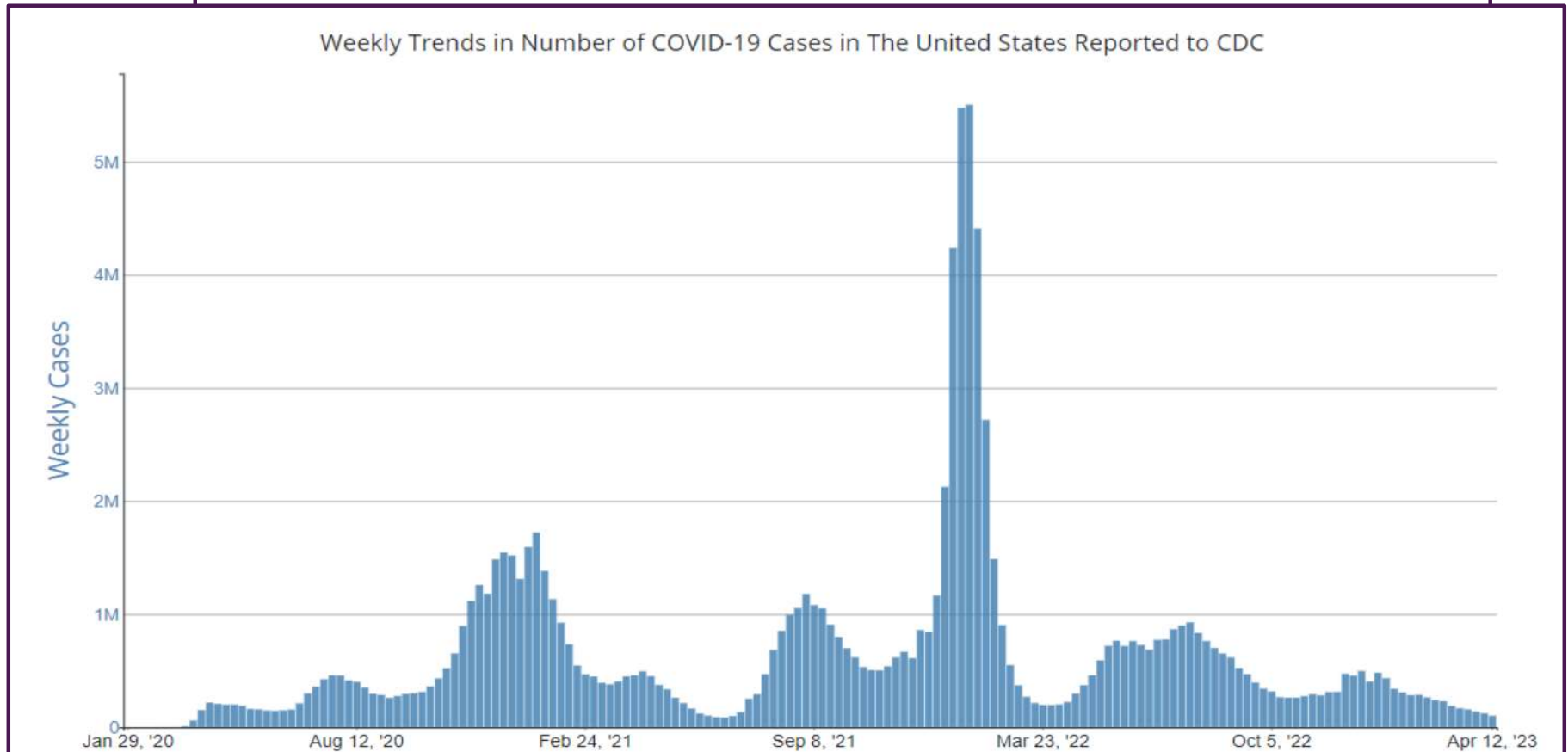
<https://www.cdc.gov/>

ACL SARS-CoV-2 positivity rate (Feb 11, 2023 – Apr 22, 2023)



Data generated using: RAPID SARS-COV-2 BY PCR (LAB10644),, COVID/FLU/RSV Panel (LAB10789) , prior to 9/17 COVID-19 ANTIGEN TEST (SOFIA) (LAB10715) , post 9/17 LAB10644 performed at WI and IL urgent cares sites

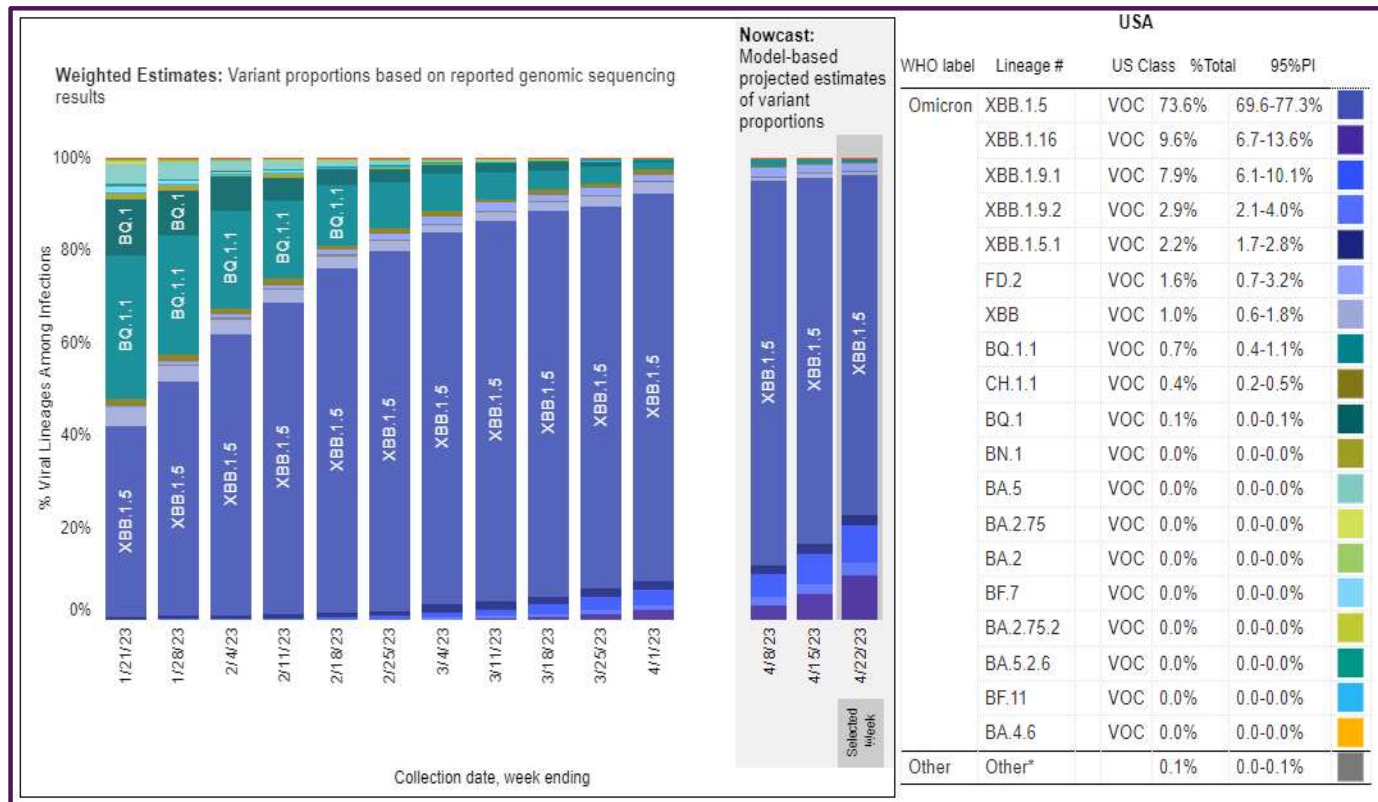
CDC- Daily COVID-19 cases in US – Jan 29, 2020 – Apr 12, 2023



CDC SARS-CoV-2 positivity rate

<https://www.cdc.gov/>

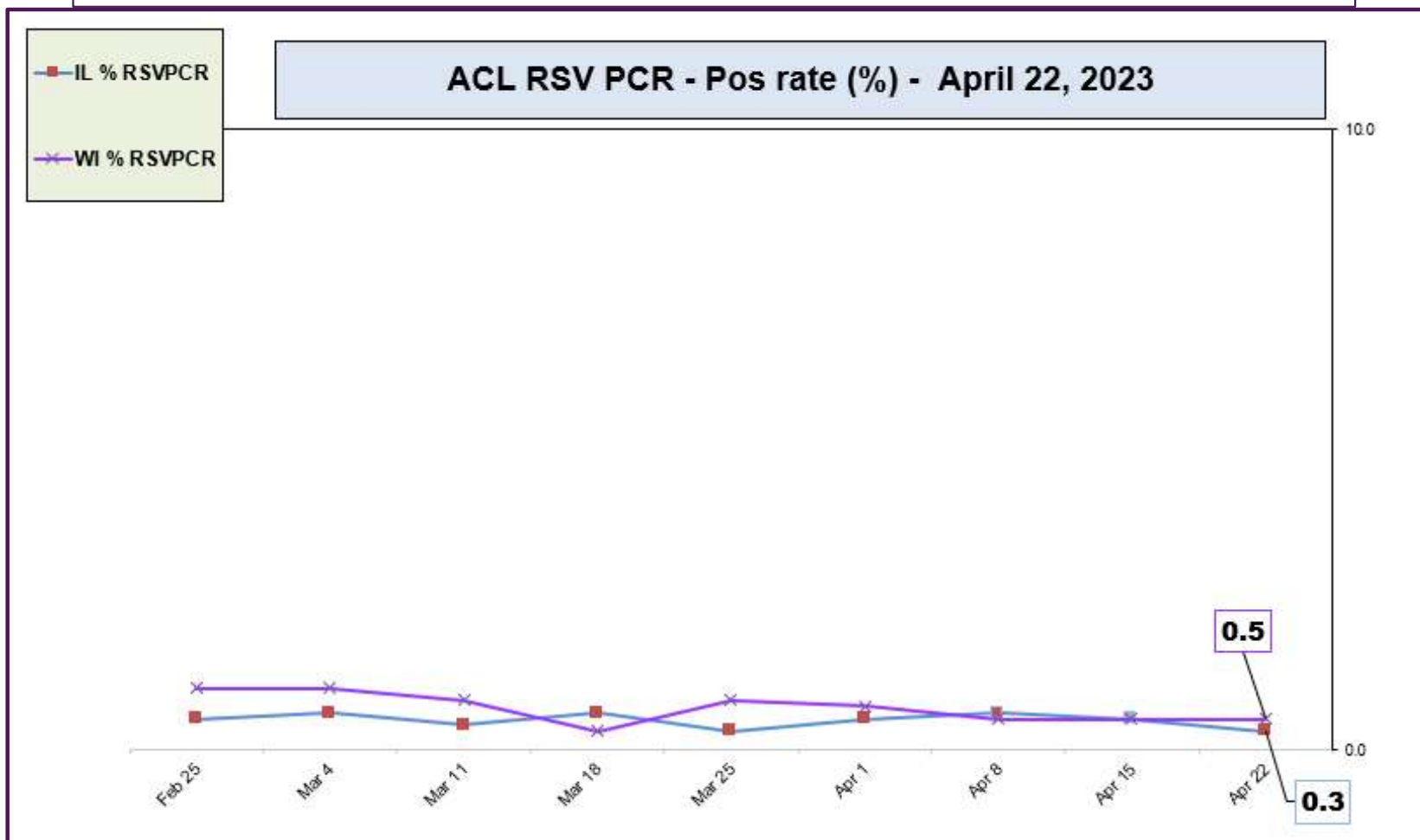
April 22, 2023 – SARS-CoV-2 circulating in the Midwest based on projection by Nowcast modeling
(Omicron XBB.1.5 – 73.6% ↓, XBB1.16 – 9.6% ↑, XBB.1.9.1 – 7.9% ↑)



** CDC uses **Nowcast** model that estimates more recent proportions of circulating variants (actual sequencing data is typically delayed for 2 weeks).

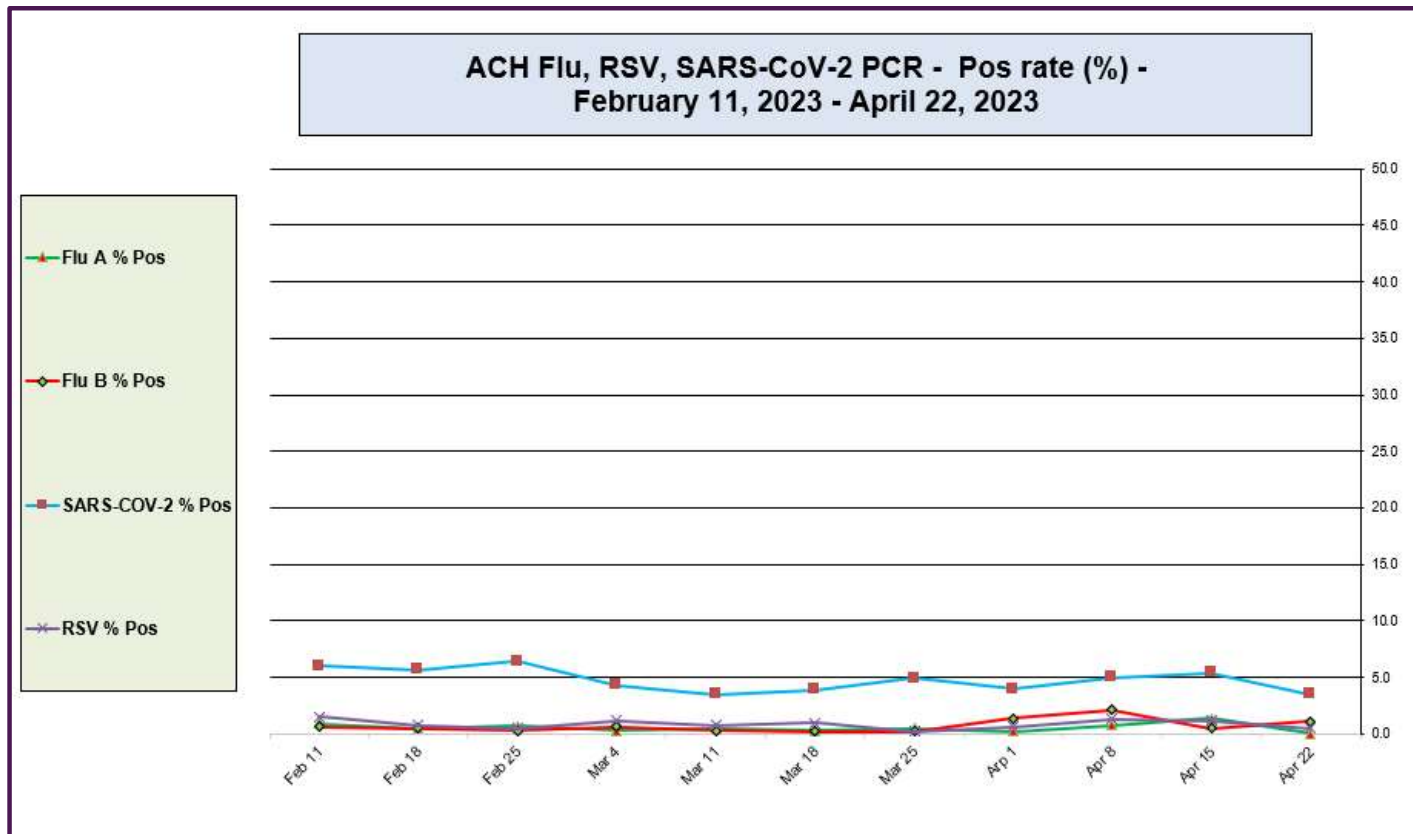
<https://www.cdc.gov/>

ACL RSV PCR positivity rate (Feb 25, 2023 – Apr 22, 2023)



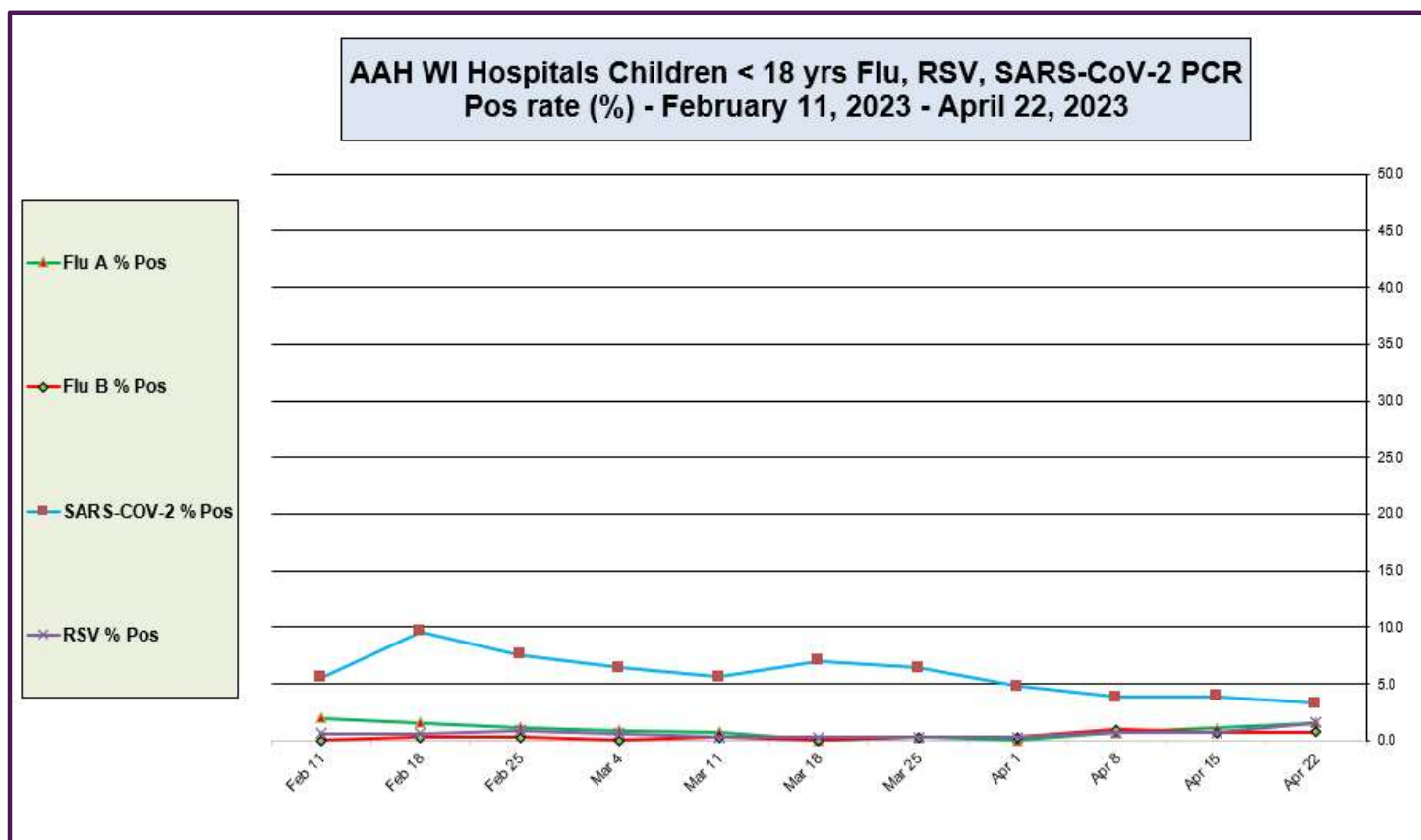
Data generated using: Respiratory Pathogen Panel (LAB9955) and COVID/FLU/RSV Panel (LAB10789)

Advocate Children's Hospital Influenza A, Influenza B, RSV, and SARS-CoV-2 PCR Positivity rates (Feb 11, 2023 – Apr 22, 2023)



Data generated using: Respiratory Pathogen Panel (LAB9955), Rapid SARS-CoV-2 by PCR (LAB10644), COVID/FLU by PCR (LAB10889), COVID/FLU/RSV Panel (LAB10789), 2019 Novel Coronavirus (SARS-CoV-2) LAB10635

AAH WI Hospitals (patients < 18 yrs old) Influenza A, Influenza B, RSV, and SARS-CoV-2 PCR Positivity rates (Feb 11, 2023 – Apr 22, 2023)



Data generated using: Respiratory Pathogen Panel (LAB9955), Rapid SARS-CoV-2 by PCR (LAB10644), COVID/FLU by PCR (LAB10889), COVID/FLU/RSV Panel (LAB10789), 2019 Novel Coronavirus (SARS-CoV-2) LAB10635