

ACL Laboratories COVID-19 and Influenza Activity Report

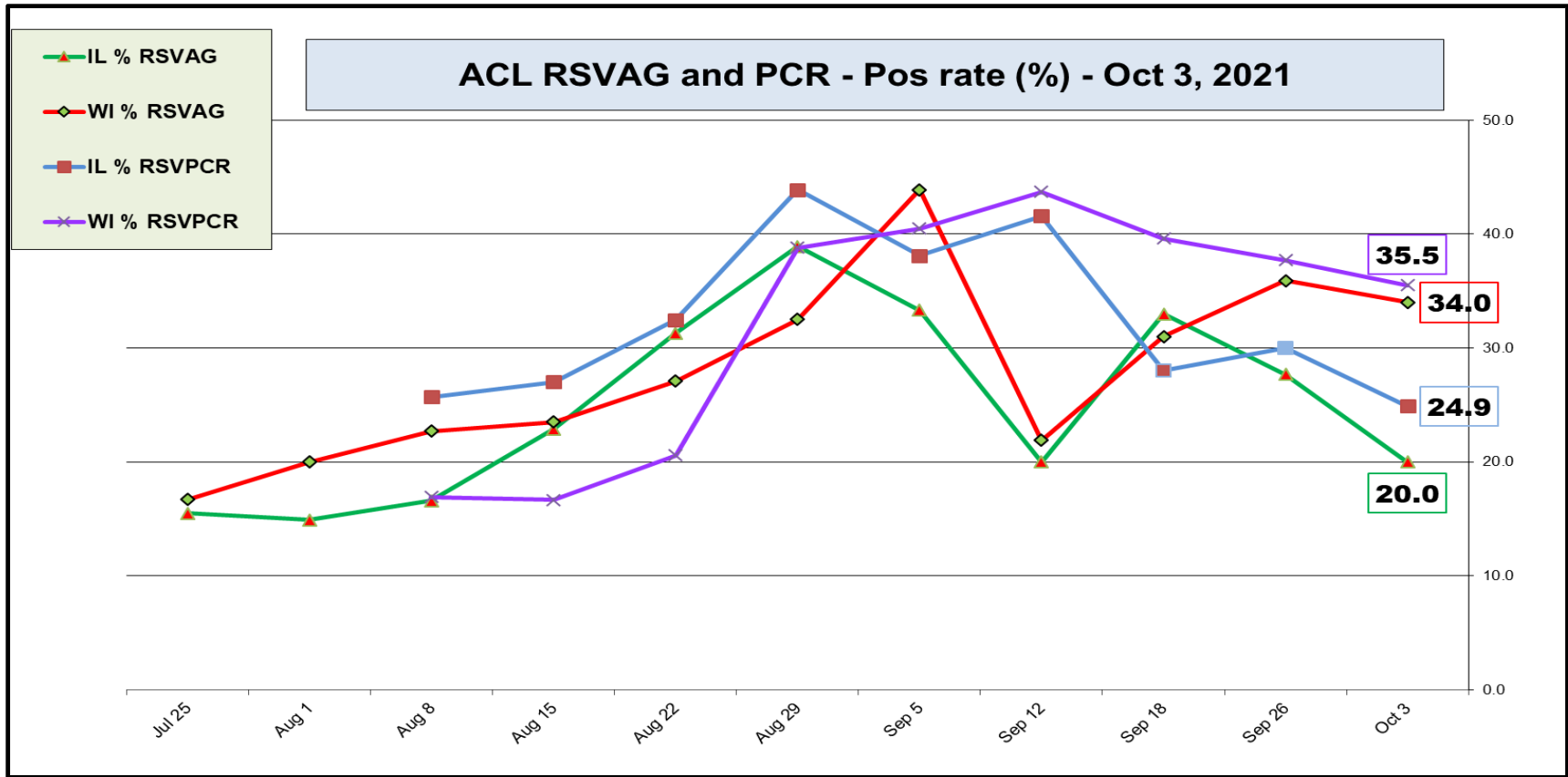
Updated: Oct 3, 2021



RESPIRATORY PATHOGEN PANEL Oct 3, 2021 Positivity Rate (%)

MONTH	FLU A Total	FLU A (H1N1)	2009 (H1N1)	FLU A (H3N2)	FLU B	RSV A	RSV B	RSV Total	PARA 1	PARA 2	PARA 3	PARA 4	Corona 229E	Corona NL63	Corona OC43	Corona HKU1	Meta pneumo	Entero Rhino	ADENO	BOCA	Legio nella	Chla mydia	Myco plasma
JAN	0.0	0.0	0.0	0.0	0.0	0.0	0.0	0.0	0.0	0.0	0.0	0.0	0.0	0.0	0.0	0.0	0.0	7.1	0.7	0.3	0.0	0.0	0.0
FEB	0.0	0.0	0.0	0.0	0.0	0.0	0.2	0.2	0.0	0.0	0.0	0.0	0.0	0.7	0.0	0.0	0.2	6.1	0.2	0.3	0.0	0.0	0.0
MAR	0.1	0.1	0.1	0.1	0.1	0.1	0.1	0.3	0.4	0.1	0.1	0.3	0.1	1.4	0.9	0.1	0.4	12.2	1.2	0.3	0.0	0.1	0.1
APR	0.0	0.0	0.0	0.0	0.0	0.0	0.1	0.1	0.0	0.2	0.5	0.0	0.0	2.5	2.9	0.0	0.8	15.3	1.4	1.2	0.0	0.0	0.0
MAY	0.0	0.0	0.0	0.0	0.0	0.0	0.0	0.0	0.1	0.7	3.9	0.0	0.2	1.4	3.9	0.0	0.0	14.4	1.7	1.4	0.2	0.0	0.1
JUN	0.0	0.0	0.0	0.0	0.0	0.1	1.8	1.9	0.0	0.3	9.6	0.0	0.3	0.4	2.4	0.0	0.1	15.8	1.1	1.8	0.0	0.0	0.1
JUL	0.0	0.0	0.0	0.0	0.0	1.0	7.2	8.2	0.1	0.5	12.9	0.0	0.1	0.4	1.4	0.0	0.5	18.9	1.6	4.4	0.4	0.0	0.0
AUG	0.0	0.0	0.0	0.0	0.0	0.8	12.5	13.3	0.0	1.2	6.2	0.1	0.1	0.1	0.5	0.0	0.7	14.0	1.3	3.6	0.0	0.0	0.0
SEP	0.0	0.0	0.0	0.0	0.0	0.7	10.6	11.3	0.0	0.9	1.8	0.4	0.0	0.0	0.4	0.0	0.6	23.6	0.8	4.1	0.1	0.0	0.1
OCT	0.0	0.0	0.0	0.0	0.0	0.0	3.6	3.6	0.0	1.8	1.8	0.0	0.0	0.0	0.0	0.0	0.0	23.6	1.8	5.5	0.0	0.0	0.0
NOV																							
DEC																							

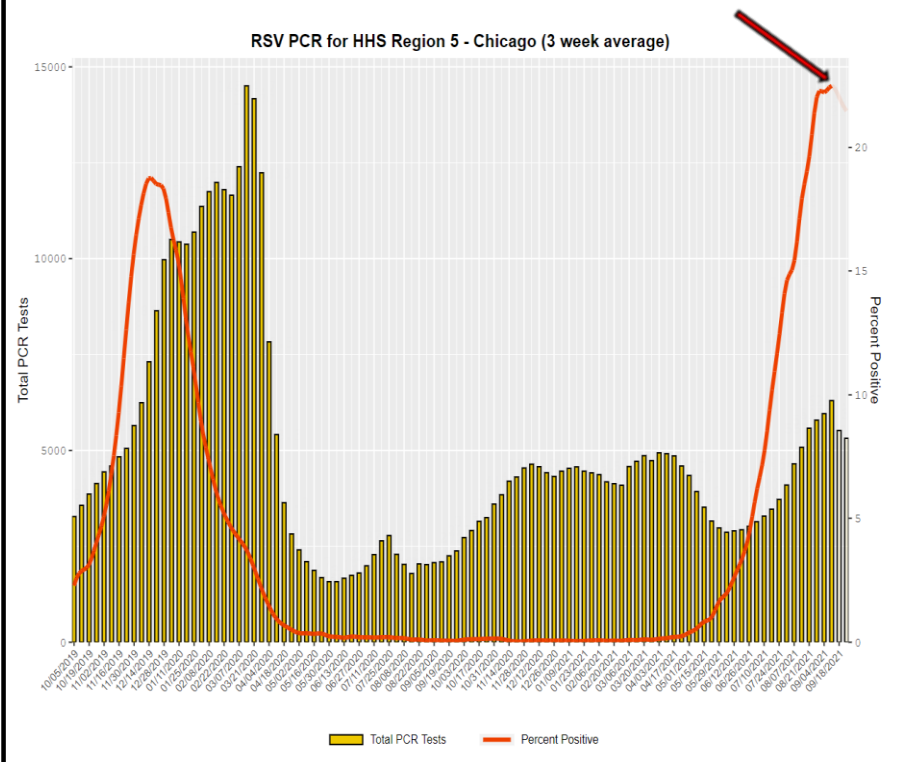
Increased prevalence of viruses: **Rhinovirus and RSV**



ACL RSV PCR remains the same , EIA pos rate is trending down

CDC Data RSV pos rate for Region 5 Chicago - (PCR – 22.3%↑, Antigen - 31% ↓)

Total PCR Tests



SARS-COV-2					Influenza - no activity				RSV (Antigen+PCR)			
Week	IL % SCVPCR	WI % SCVPCR	IL % COVAG	WI % COVAG	IL % FLUPCR	WI % FLUPCR	IL % FLUAG	WI % FLUAG	IL % RSVAG	WI % RSVAG	IL % RSVPCR	WI % RSVPCR
Oct 3	5.0	8.6	6.0	16.6	0	0	0	0	20.0	34.0	24.9	35.5
Sep 26	5.0	8.1	4.4	15.2	0	0	0	0	27.7	35.9	30.0	37.7
Sep 18	4.9	9.0	7.2	17.5	0	0	0	0	33.0	31.0	28.0	39.6
Sep 12	6.5	9.6	5.9	20.5	0	0	0	0	20.0	21.9	41.6	43.7
Sep 5	6.2	8.3	7.0	22.4	0	0	0	0	33.3	43.9	38.1	40.5
Aug 29	7.5	8.5	9.0	21.3	0	0	0	0	38.9	32.5	43.9	38.8
Aug 22	6.0	7.3	13.5	16.1	0	0	0	0	31.3	27.1	32.5	20.6
Aug 15	6.6	6.8	9.8	18.0	0	0	0	0	22.9	23.5	27.0	16.7
Aug 8	6.8	7.4	9.8	15.8	0	0	0	0	16.6	22.7	25.7	16.9
Aug 1	3.8	6.9	10.5	17.6	0	0	0	0	14.9	20.0	0.0	0.0
Jul 25	2.7	4.1	8.0	11.8	0	0	0	0	15.5	16.7	0.0	0.0
Jul 18	1.8	2.6	1.4	7.2	0	0	0	0	15.6	21.6	0.0	0.0
Jul 11	1.6	1.6	1.0	5.0	0	0	0	0	16.7	17.4	0.0	0.0

ACL RSV tests results are consistent with “atypical” RSV outbreak

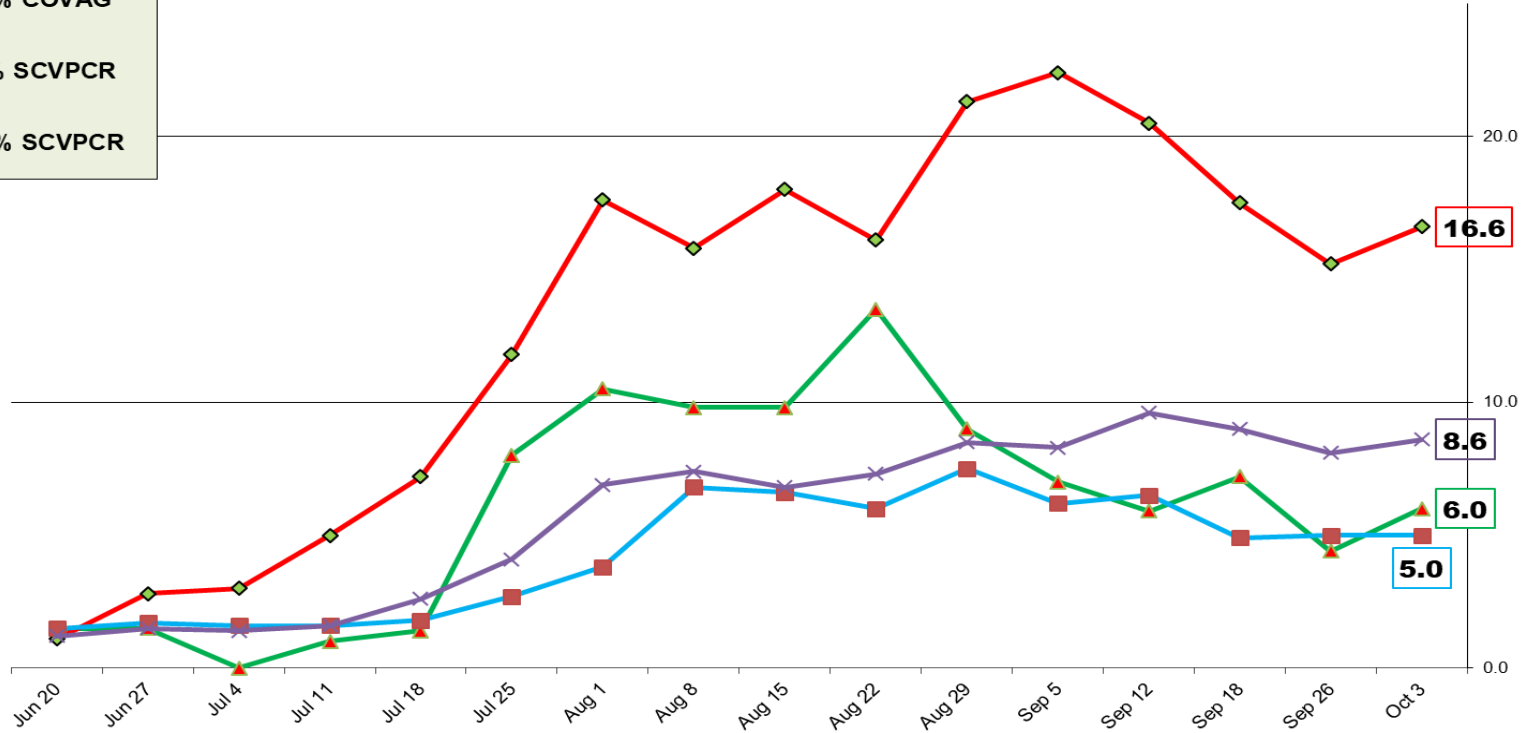
ACL COVAG and SCVPCR - Pos rate (%) - Oct 3, 2021

IL % COVAG

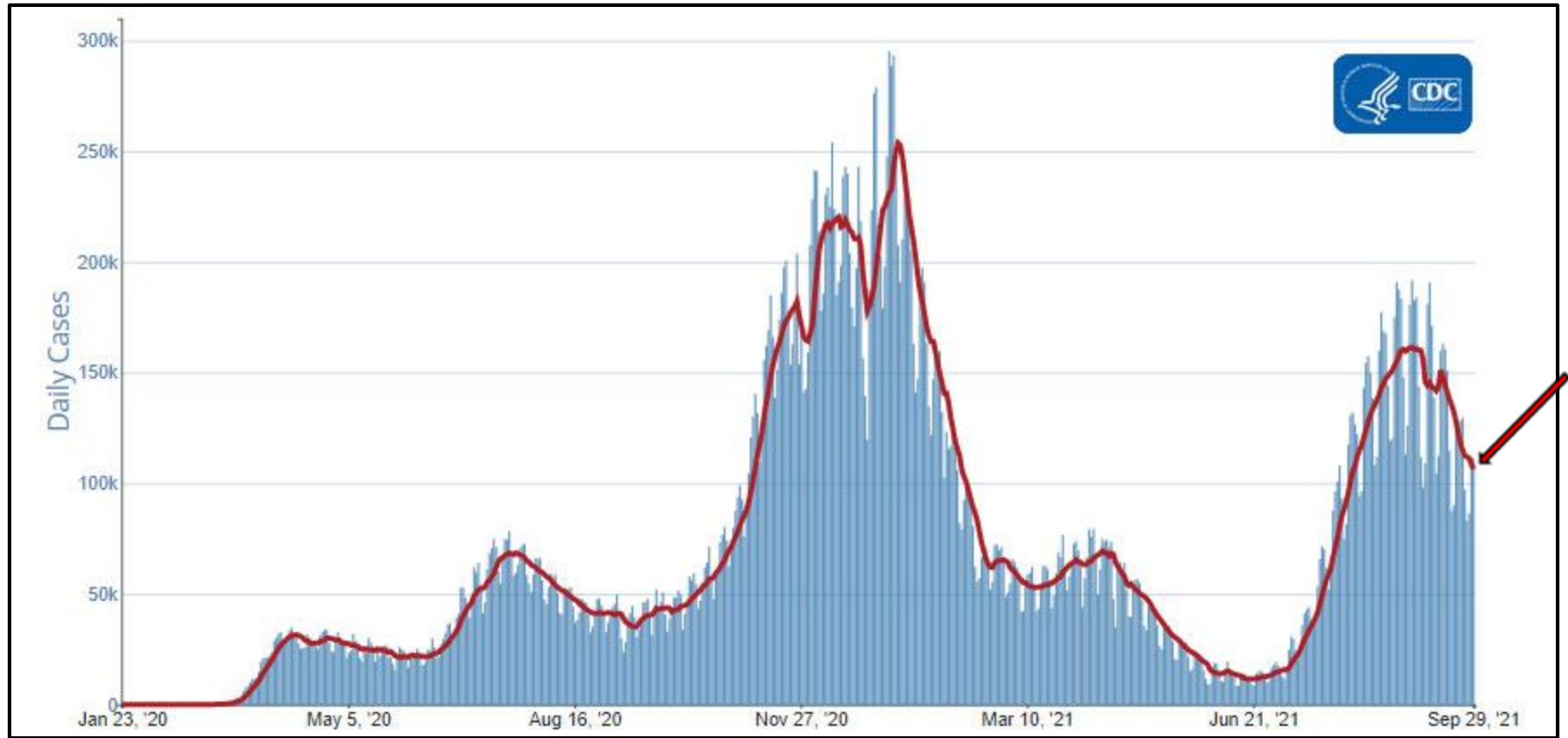
WI % COVAG

IL % SCVPCR

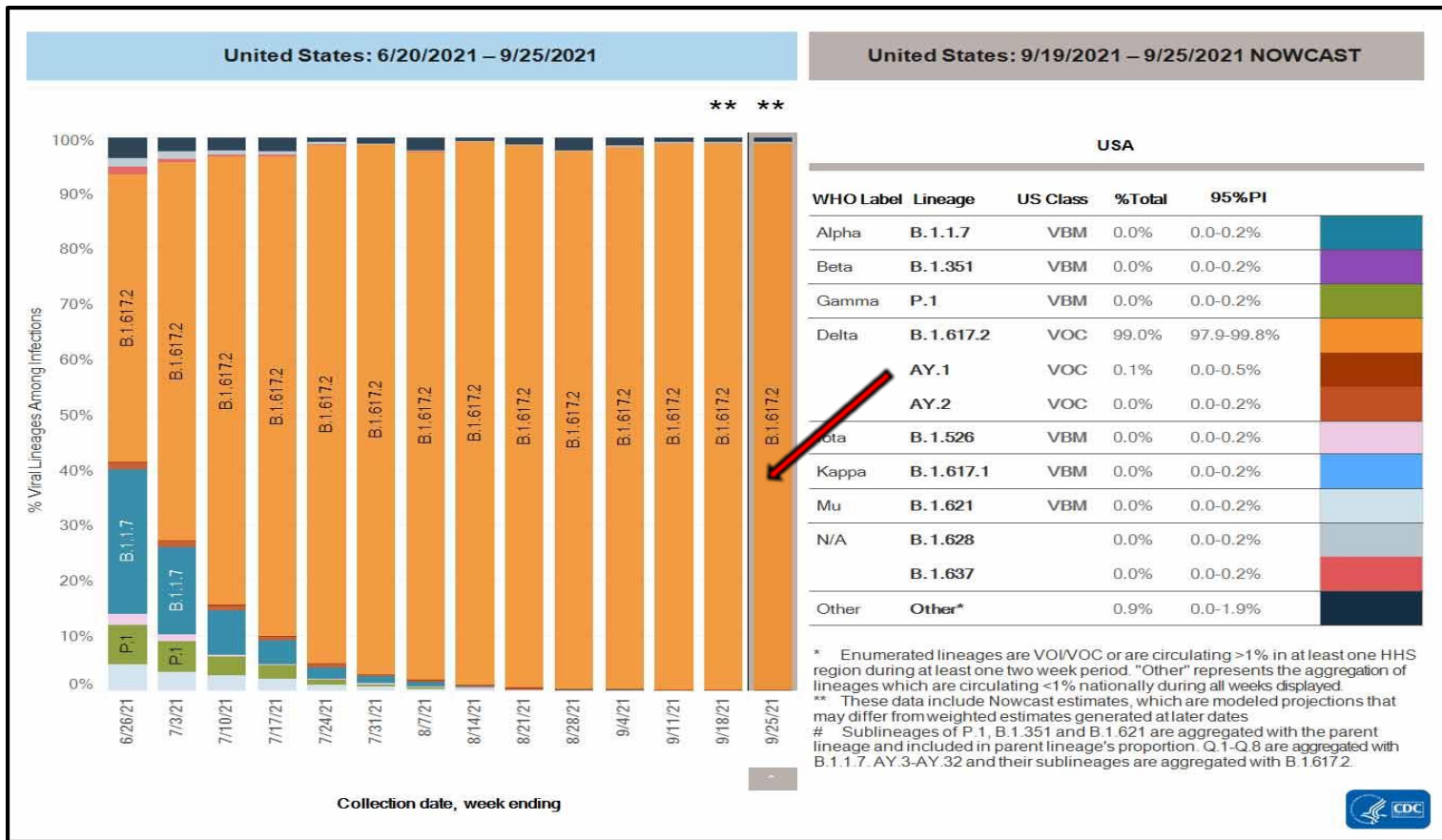
WI % SCVPCR



Sep 29, 2021 - daily COVID-19 cases in US - CDC



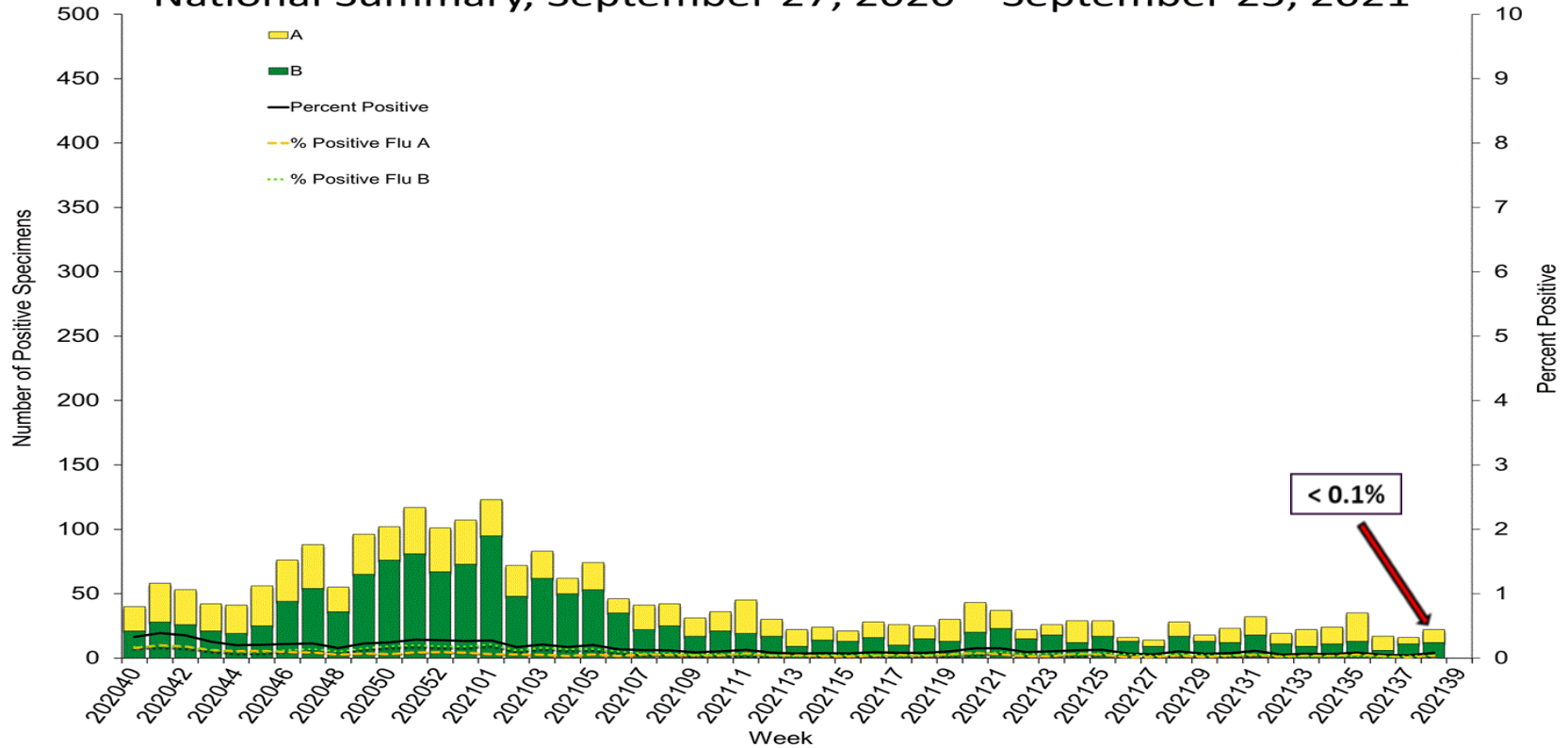
Sep 25, 2021 – SARS-CoV-2 circulating in the US (~98.6% % Delta variants)



US vaccination status CDC | Data as of: Sep 30, 2021

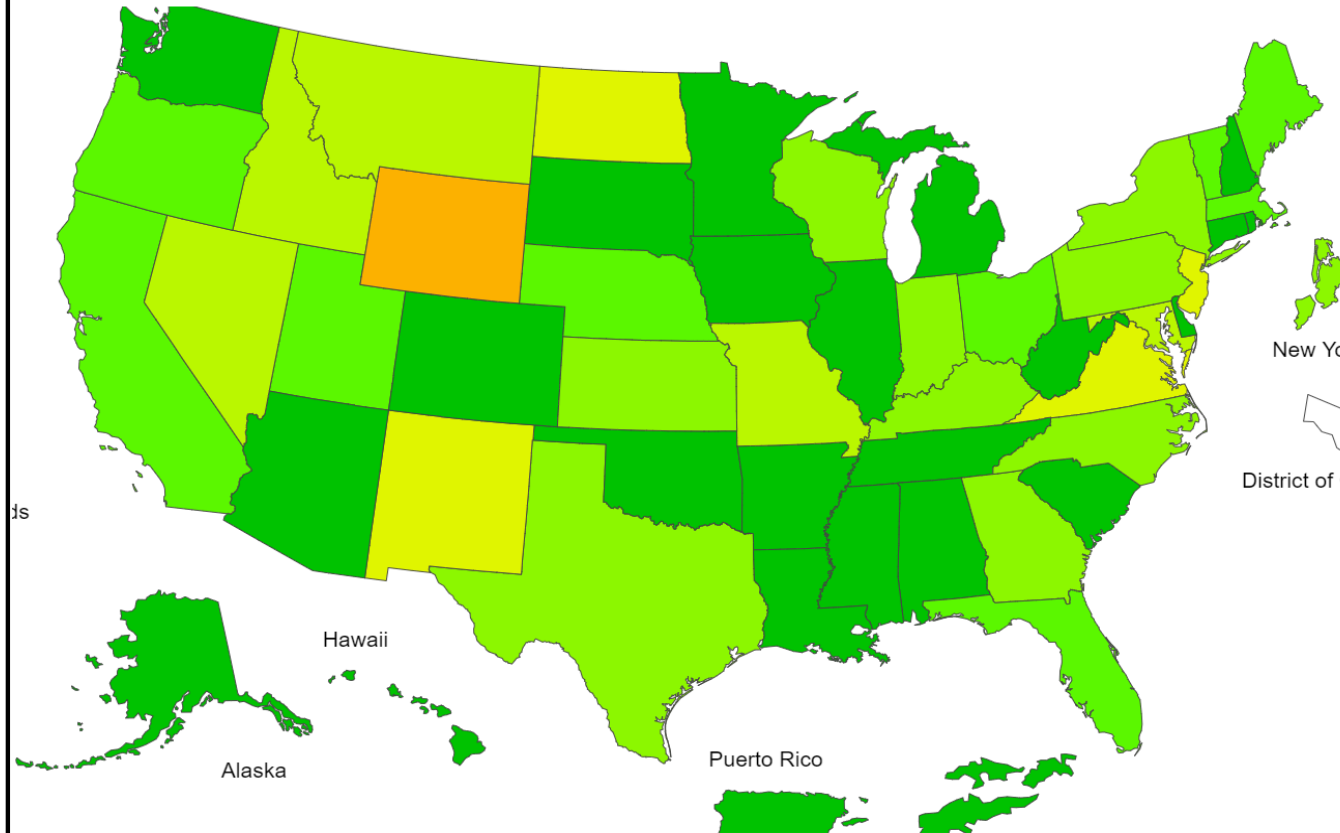
392,909,995 Vaccines Administered	
214,332,261 People who received at least one dose	184,601,450 People who are fully vaccinated*
64.6% Percentage of the US population that has received at least one dose	55.6% Percentage of the US population that has been fully vaccinated*

Influenza Positive Tests Reported to CDC by U.S. Clinical Laboratories, National Summary, September 27, 2020 – September 25, 2021



2020-21 Influenza Season Week 38 ending Sep 25, 2021

ILI Activity Level



According to the WHO's August 2021 influenza update, global flu activity (including **southern hemisphere**) has remained at **lower than expected levels** for this time of year, which they believe may be due to continued COVID-19 measures like physical distancing and masking. (Most targets in circulation were - **Flu B and Flu A H3**)

What's New for 2021-2022 - A few things are different for the 2021-2022 influenza (flu) season, including:

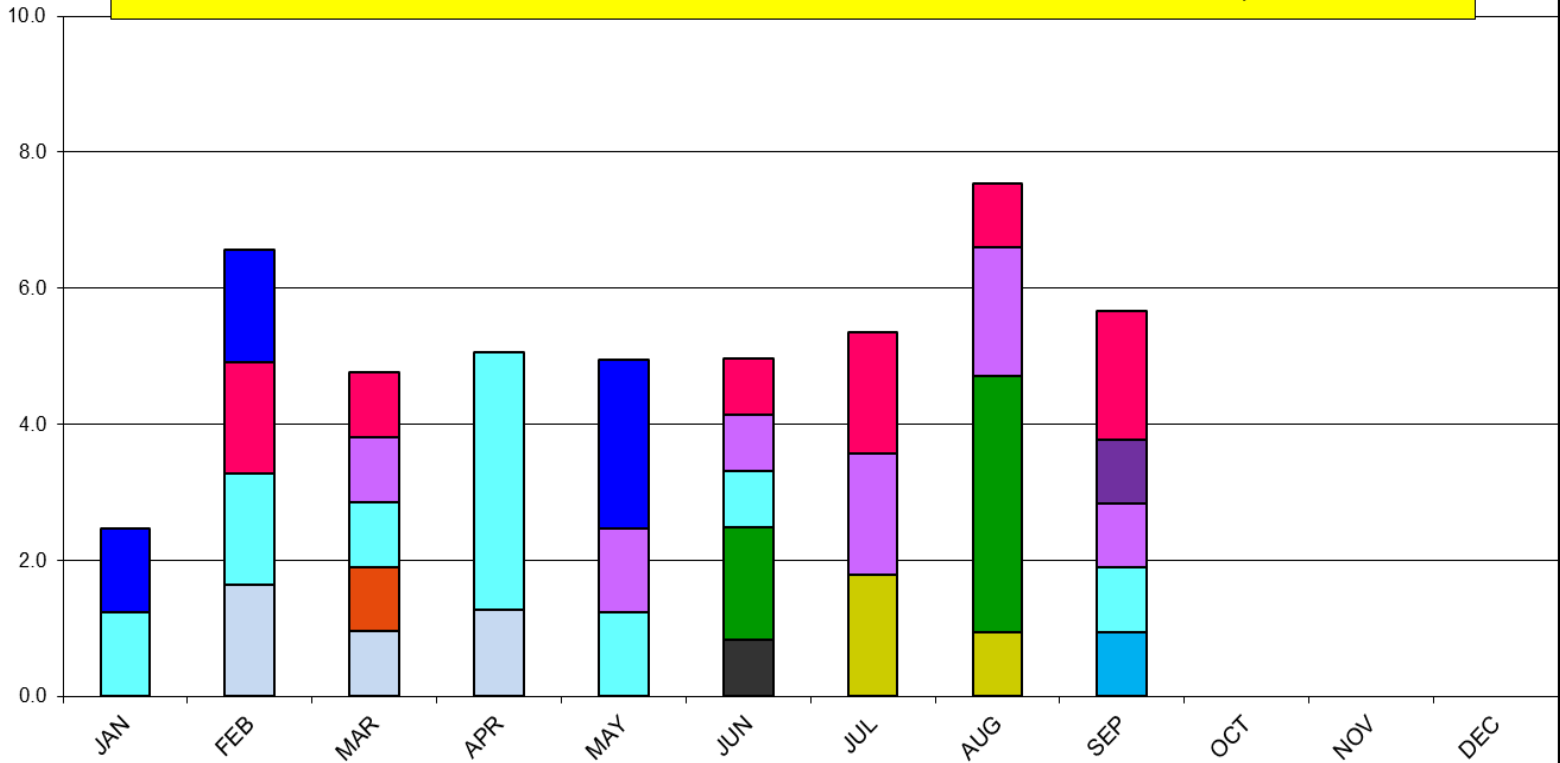
The composition of flu vaccines has been updated.

1. All flu vaccines will be **quadrivalent (four components)** for four different flu viruses.
2. Flucelvax Quadrivalent is now approved for people **2 years and older**.
3. **Flu and COVID-19** vaccines can be given at the same time.
4. Guidance concerning contraindications and precautions for the use of two flu vaccines – **Flucevax and Flublok Quadrivalent** – were updated.

CSF targets positivity rate is 5.7%

ACL RMEPNL - CSF POSITIVE TARGETS - Oct 3, 2021

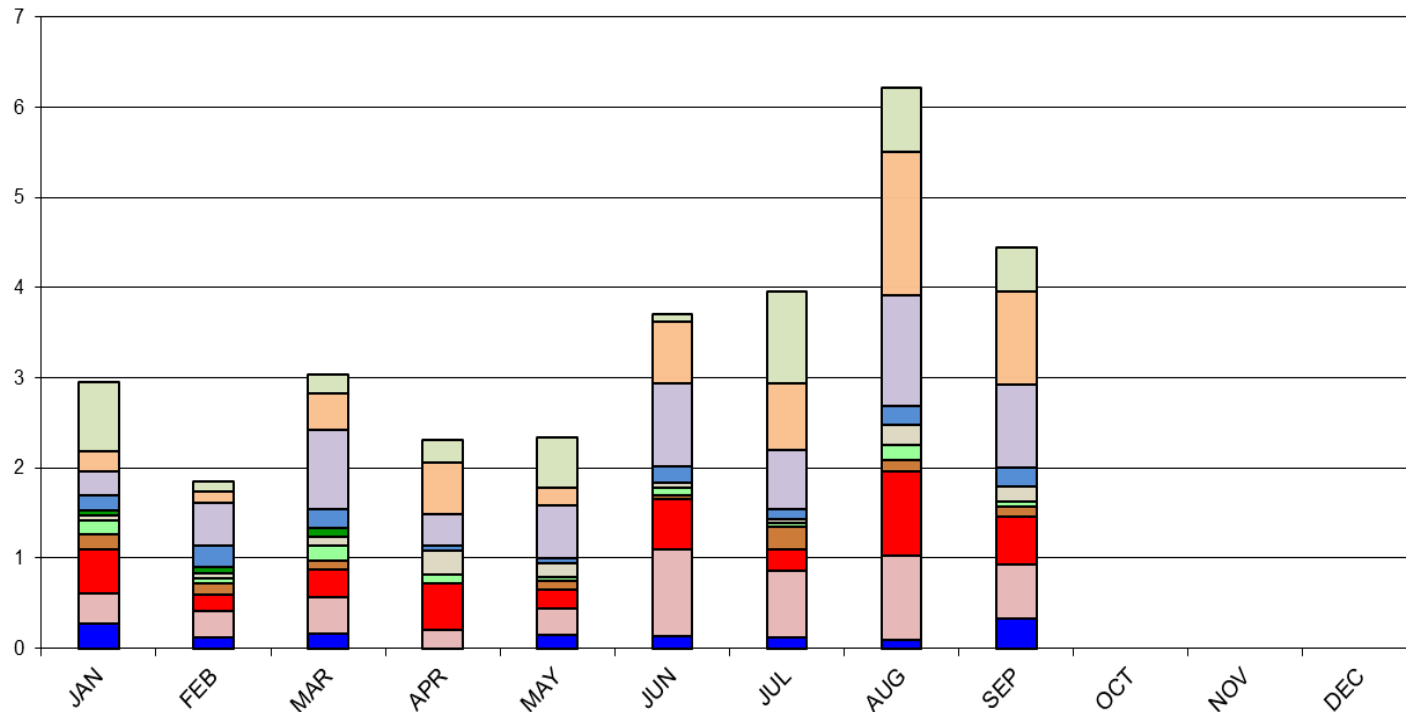
- Crypto
- VZV
- PEV
- HHV6
- HSV2
- HSV1
- EV
- CMV
- S. pneu
- S. agal
- N. men
- L. mono
- H. infl
- E. coli



The most prevalent GI bacterial target are (Crypto and Giardia -0.9%)

ACL GPP - STOOL POS BACTERIAL TARGETS - Oct 3, 2021

- CAMPY
- CRYP
- GIARDIA
- ETEC LT/ST
- Vibrio
- E. coli 0157
- Shiga tox 2
- Shiga tox 1
- E. histo
- SALM
- SHIGA



The most prevalent GI viral target is – (Norovirus II – 0.6%)

