

ACL Laboratories COVID-19 and Influenza Activity Report

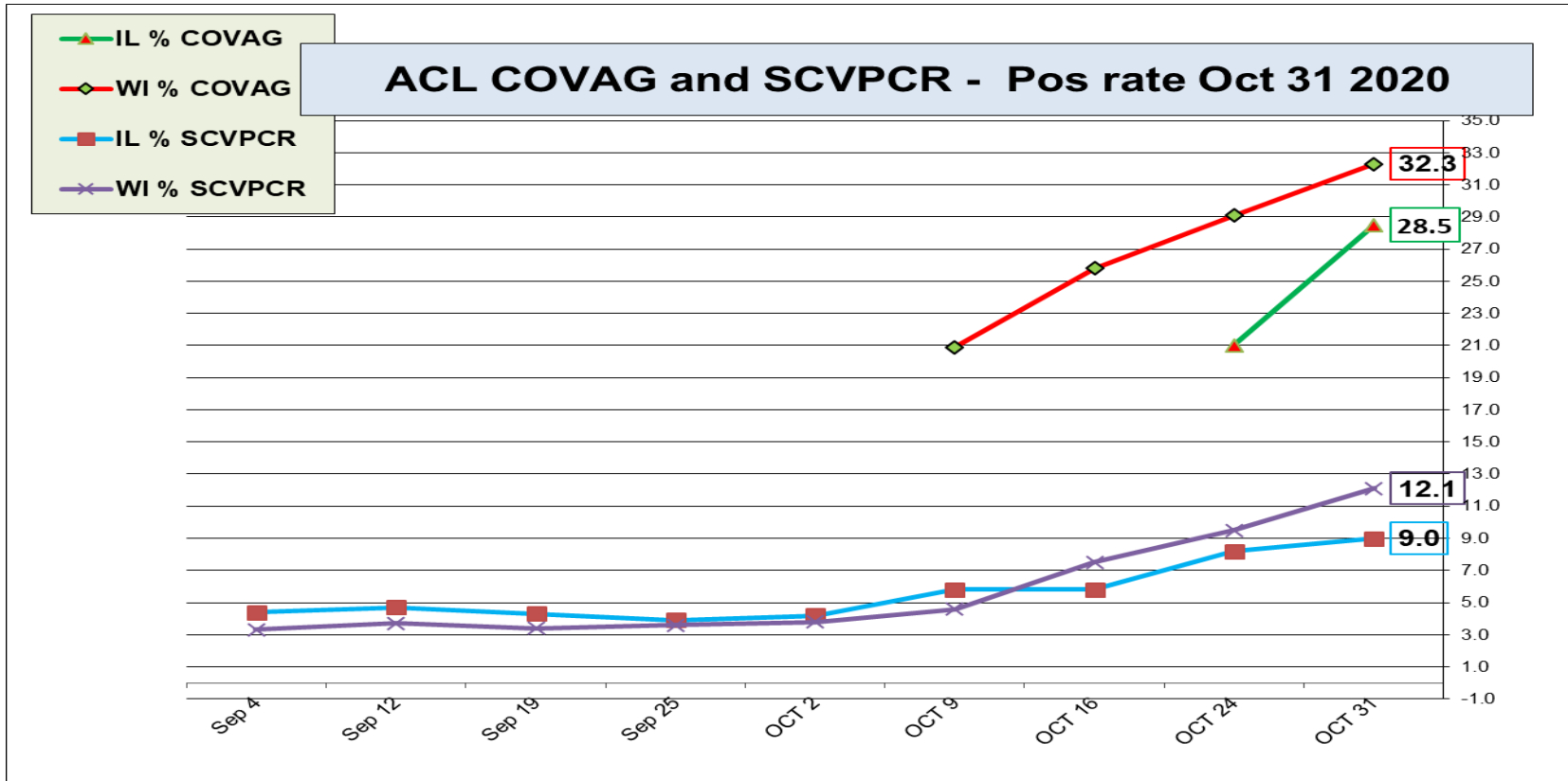
Updated: October 31, 2020



Respiratory Pathogens - 10 31 2020

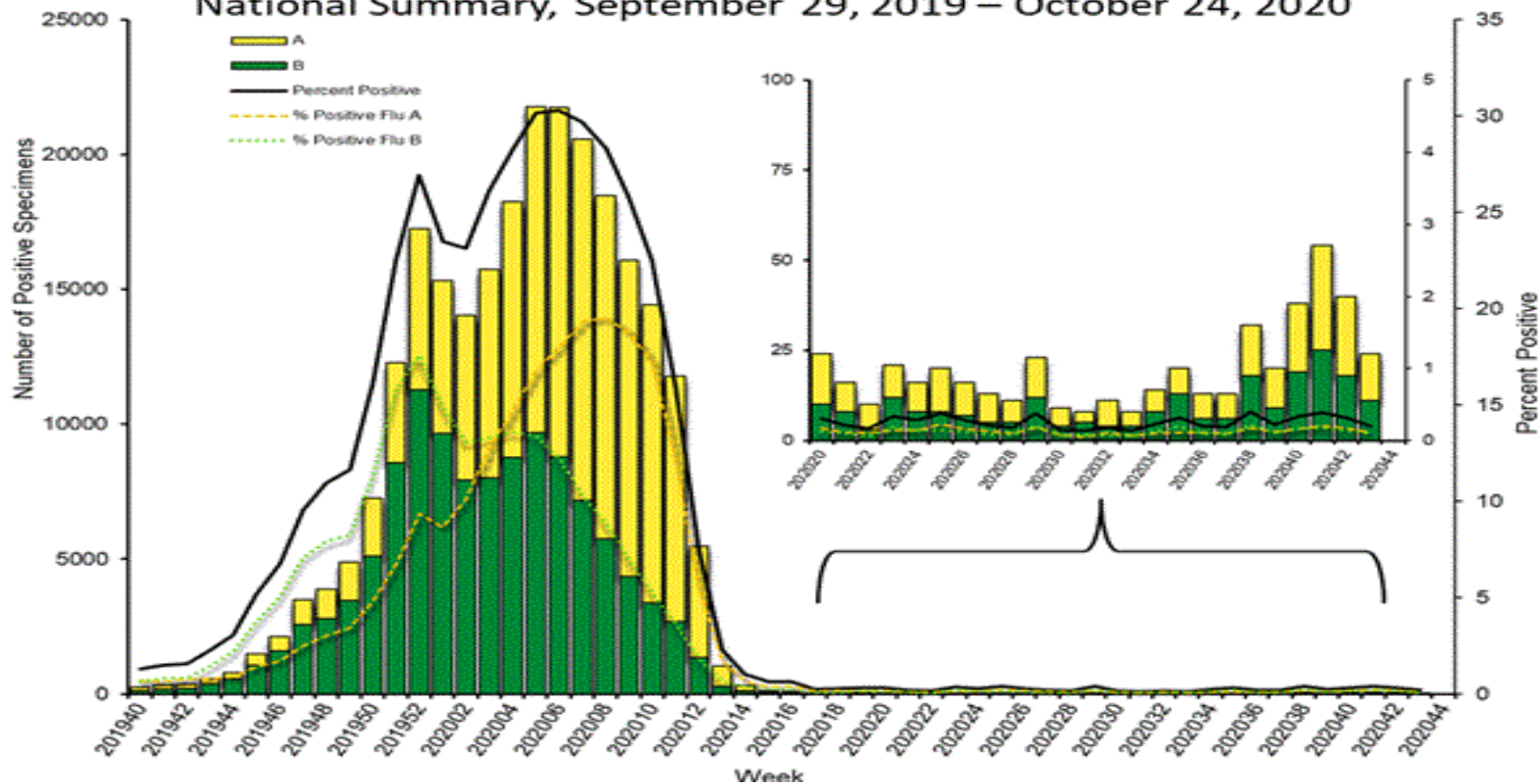
| Week | InfA-H1 | InfA-H3 | 2009 H1N1 | Inf B | RSV | All Para | EV / Rhino | Meta pneumo | Adeno | All Corona | Bocca | Myc. pneumo | Chlam. pneumo. | Leg. pneumo. | BP / BPP | Total Pos | POS FLU | Total | ACL RPPNL | US %FLU | IL/WI PCR | ACL FLUPCR |
|--------|---------|---------|-----------|-------|-----|----------|------------|-------------|-------|------------|-------|-------------|----------------|--------------|----------|-----------|---------|-------|-----------|---------|-----------|------------|
| OCT31 | 0 | 0 | 0 | 0 | 0 | 0 | 7 | 0 | 0 | 0 | 4 | 0 | 0 | 0 | 0 | 11 | 0 | 233 | 0.0 | n/a | n/a | 0.0 |
| OCT23 | 0 | 0 | 0 | 0 | 0 | 0 | 12 | 3 | 2 | 0 | 2 | 0 | 0 | 0 | 0 | 19 | 0 | 173 | 0.0 | 0.2 | 0.4 | 0.0 |
| OCT16 | 0 | 0 | 0 | 0 | 0 | 0 | 14 | 1 | 1 | 0 | 2 | 0 | 0 | 0 | 0 | 17 | 0 | 185 | 0.0 | 0.3 | 0.2 | 0.0 |
| OCT9 | 0 | 0 | 0 | 0 | 0 | 0 | 9 | 2 | 0 | 0 | 3 | 0 | 0 | 0 | 0 | 14 | 0 | 64 | 0.0 | 0.3 | 0.3 | 0.0 |
| OCT2 | 0 | 0 | 0 | 0 | 0 | 0 | 5 | 0 | 0 | 0 | 1 | 0 | 0 | 1 | 0 | 7 | 0 | 65 | 0.0 | 0.3 | 0.2 | 0.0 |
| Sep 25 | 0 | 0 | 0 | 0 | 0 | 0 | 7 | 0 | 2 | 0 | 0 | 0 | 0 | 2 | 0 | 11 | 0 | 111 | 0.0 | 0.3 | 0.0 | 0.0 |
| Sep 19 | 0 | 0 | 0 | 0 | 0 | 0 | 4 | 0 | 0 | 0 | 0 | 0 | 0 | 0 | 0 | 4 | 0 | 28 | 0.0 | 0.4 | 0.3 | 0.0 |
| Sep 12 | 0 | 0 | 0 | 0 | 0 | 0 | 0 | 1 | 0 | 0 | 0 | 0 | 0 | 0 | 0 | 1 | 0 | 58 | 0.0 | 0.2 | 0.0 | 0.0 |
| Sep 4 | 0 | 0 | 0 | 0 | 0 | 0 | 2 | 0 | 0 | 0 | 0 | 0 | 0 | 0 | 0 | 2 | 0 | 146 | 0.0 | 0.2 | 0.5 | 0.0 |
| Aug 28 | 0 | 0 | 0 | 0 | 0 | 0 | 3 | 0 | 0 | 0 | 0 | 0 | 0 | 1 | 0 | 4 | 0 | 55 | 0.0 | 0.3 | 0.4 | 0.0 |
| Aug 21 | 0 | 0 | 0 | 0 | 0 | 0 | 3 | 0 | 0 | 0 | 0 | 0 | 0 | 0 | 0 | 3 | 0 | 32 | 0.0 | 0.2 | 1.0 | 0.0 |

| SARS-COV-2 | | | | | RSV | | | | Influenza | |
|------------|----------------|----------------|---------------|---------------|----------------|----------------|---------------|---------------|----------------|----------------|
| Week | IL % SCVPCR | WI % SCVPCR | IL % COVAG | WI % COVAG | IL % RSVPCR | WI % RSVPCR | IL % RSVAG | WI % RSVAG | IL % FLUPCR | WI % FLUPCR |
| OCT 31 | 9.0 | 12.1 | 28.5 | 32.3 | 0 | 0 | 0 | 0 | 0 | 0 |
| OCT 24 | 8.2 | 9.5 | 21.0 | 29.1 | 0 | 0 | 0 | 0 | 0 | 0 |
| OCT 16 | 5.8 | 7.5 | 18.3 | 25.8 | 0 | 0 | 0 | 0 | 0 | 0 |
| OCT 9 | 5.8 | 4.6 | 14.4 | 20.9 | 0 | 0 | 0 | 0 | 0 | 0 |
| OCT 2 | 4.2 | 3.8 | n/a | 19.4 | 0 | 0 | 0 | 0 | 0 | 0 |
| Sep 25 | 3.9 | 3.6 | n/a | 18.3 | 0 | 0 | 0 | 0 | 0 | 0 |
| Sep 19 | 4.3 | 3.4 | n/a | n/a | 0 | 0 | 0 | 0 | 0 | 0 |
| Sep 12 | 4.7 | 3.7 | n/a | n/a | 0 | 0 | 0 | 0 | 0 | 0 |
| Sep 4 | 4.4 | 3.3 | n/a | n/a | 0 | 0 | 0 | 0 | 0 | 0 |
| Aug 28 | 4.6 | 3.5 | n/a | n/a | 0 | 0 | 0 | 0 | 0 | 0 |
| Aug 21 | 4.4 | 3.6 | n/a | n/a | 0 | 0 | 0 | 0 | 0 | 0 |
| Aug 14 | 4.4 | | n/a | n/a | 0 | 0 | 0 | 0 | 0 | 0 |

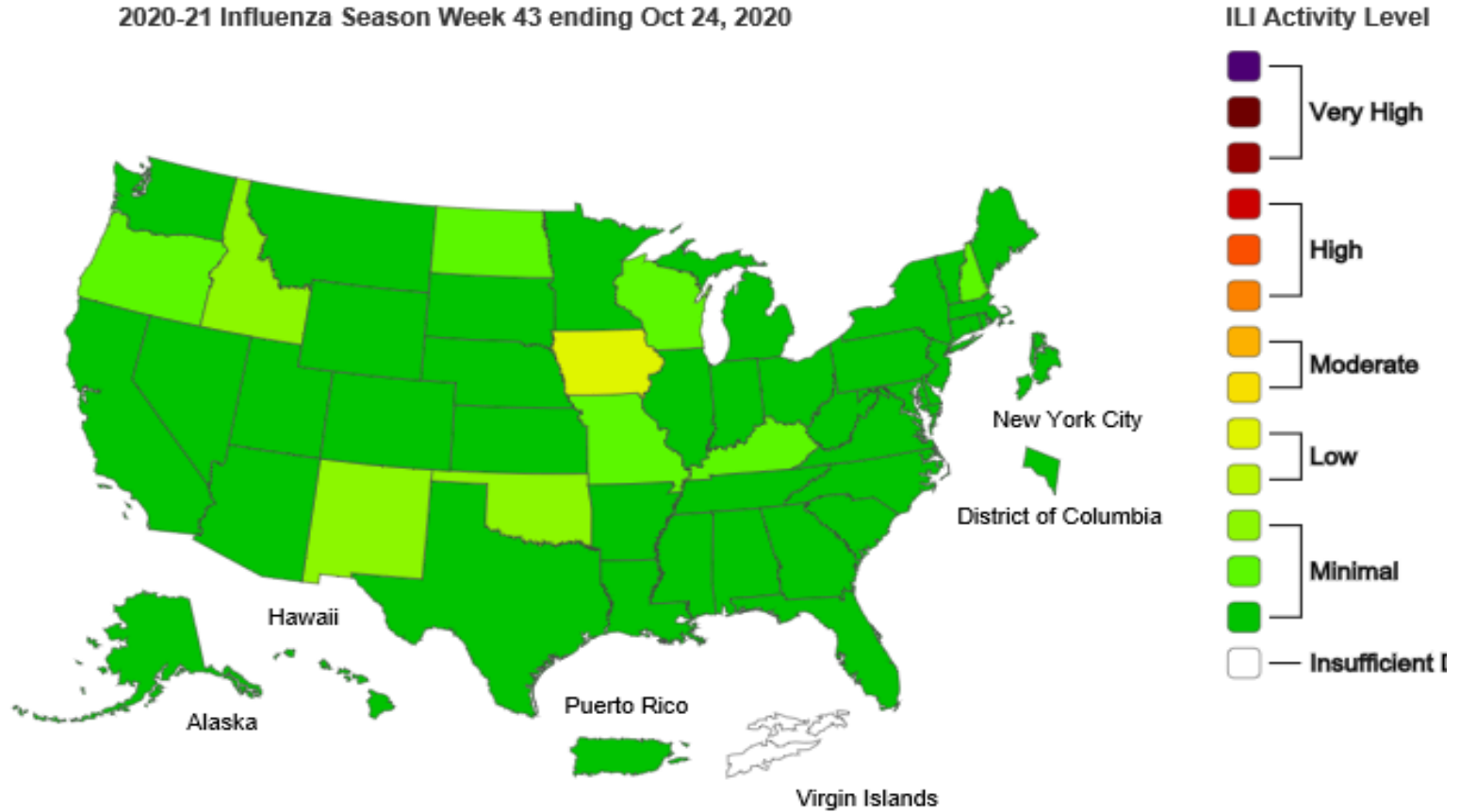


COVAG Antigen testing – is performed at Urgent Care sites (WI started Sep **25th** and IL started Oct **3rd** 2020).
SCVPCR - Rapid PCR - test is performed using Cepheid PCR at AAH Hospital sites.

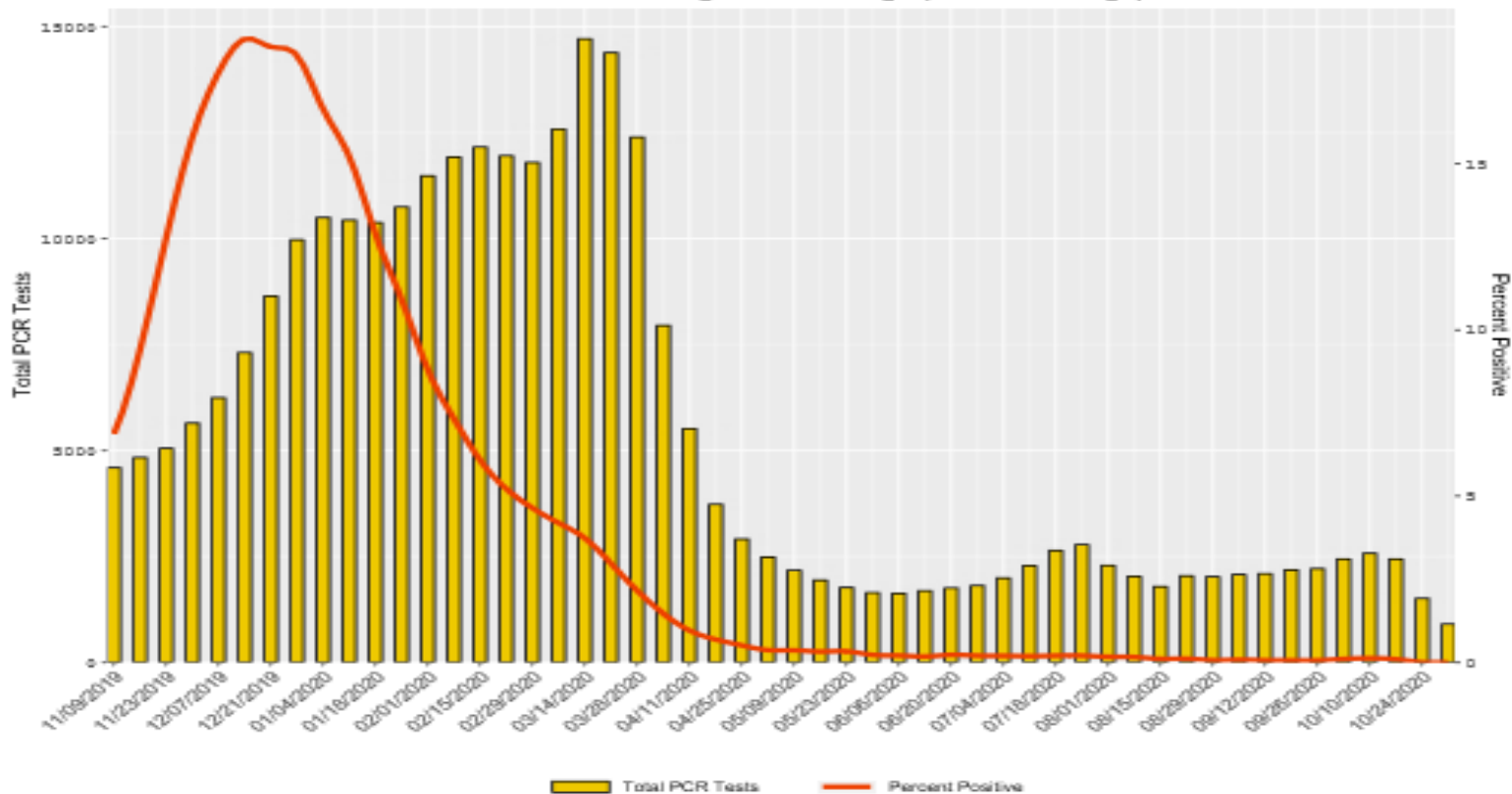
Influenza Positive Tests Reported to CDC by U.S. Clinical Laboratories, National Summary, September 29, 2019 – October 24, 2020



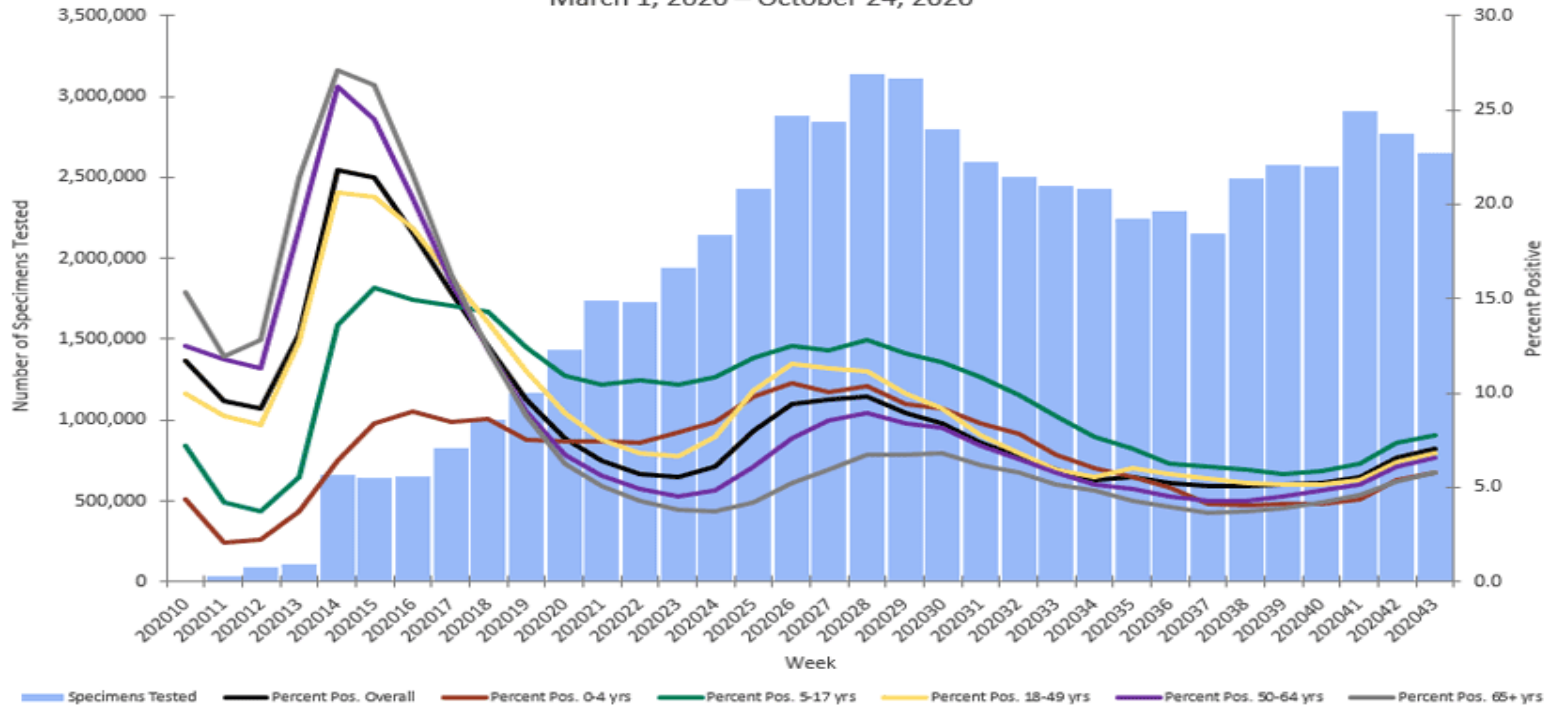
2020-21 Influenza Season Week 43 ending Oct 24, 2020



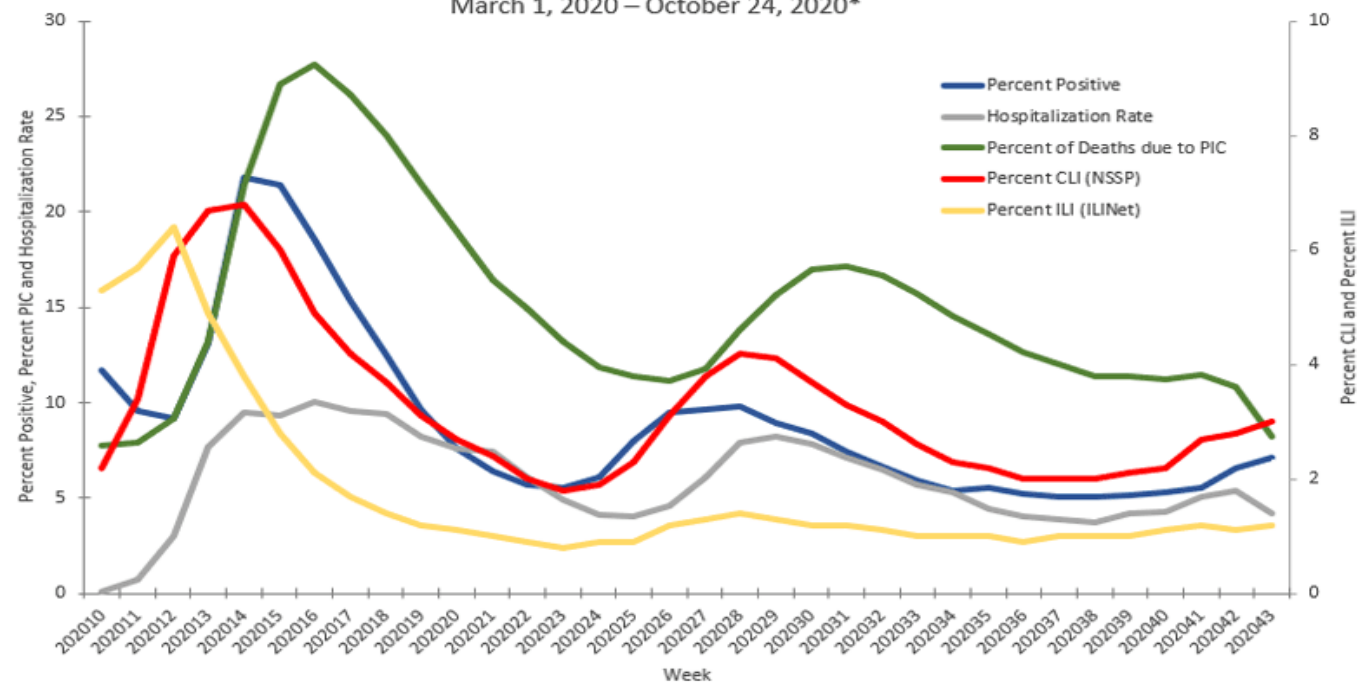
RSV PCR for HHS Region 5 - Chicago (3 week average)



Number of Specimens Tested and Percent Positive for SARS- CoV-2: Combined Laboratories Reporting to CDC
 (Public Health Laboratories and a Subset of Commercial and Clinical Laboratories)
 March 1, 2020 – October 24, 2020



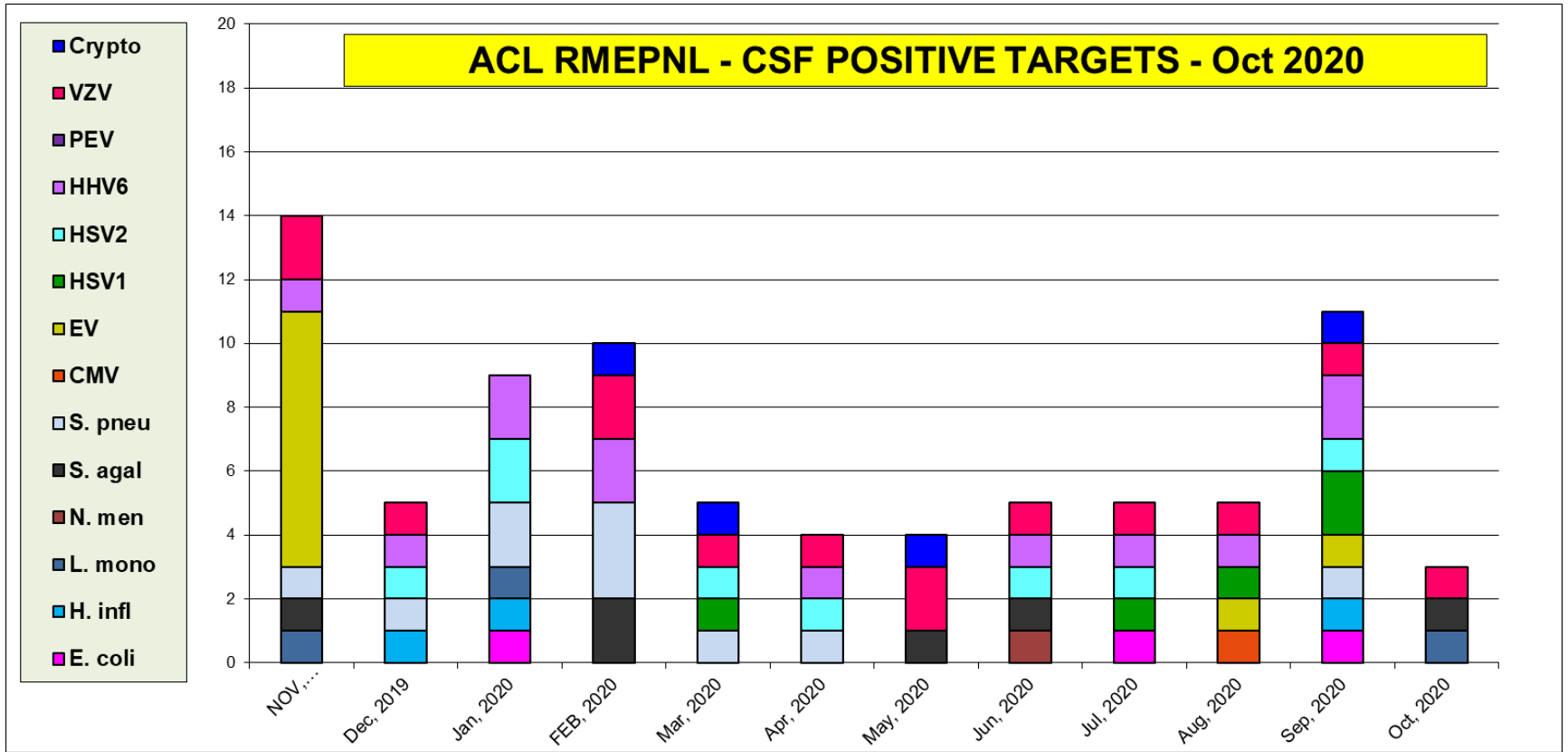
National COVID-19 Activity Indicators:
 Laboratory, Outpatient/Emergency Department, Hospitalization and Mortality Data
 March 1, 2020 – October 24, 2020*



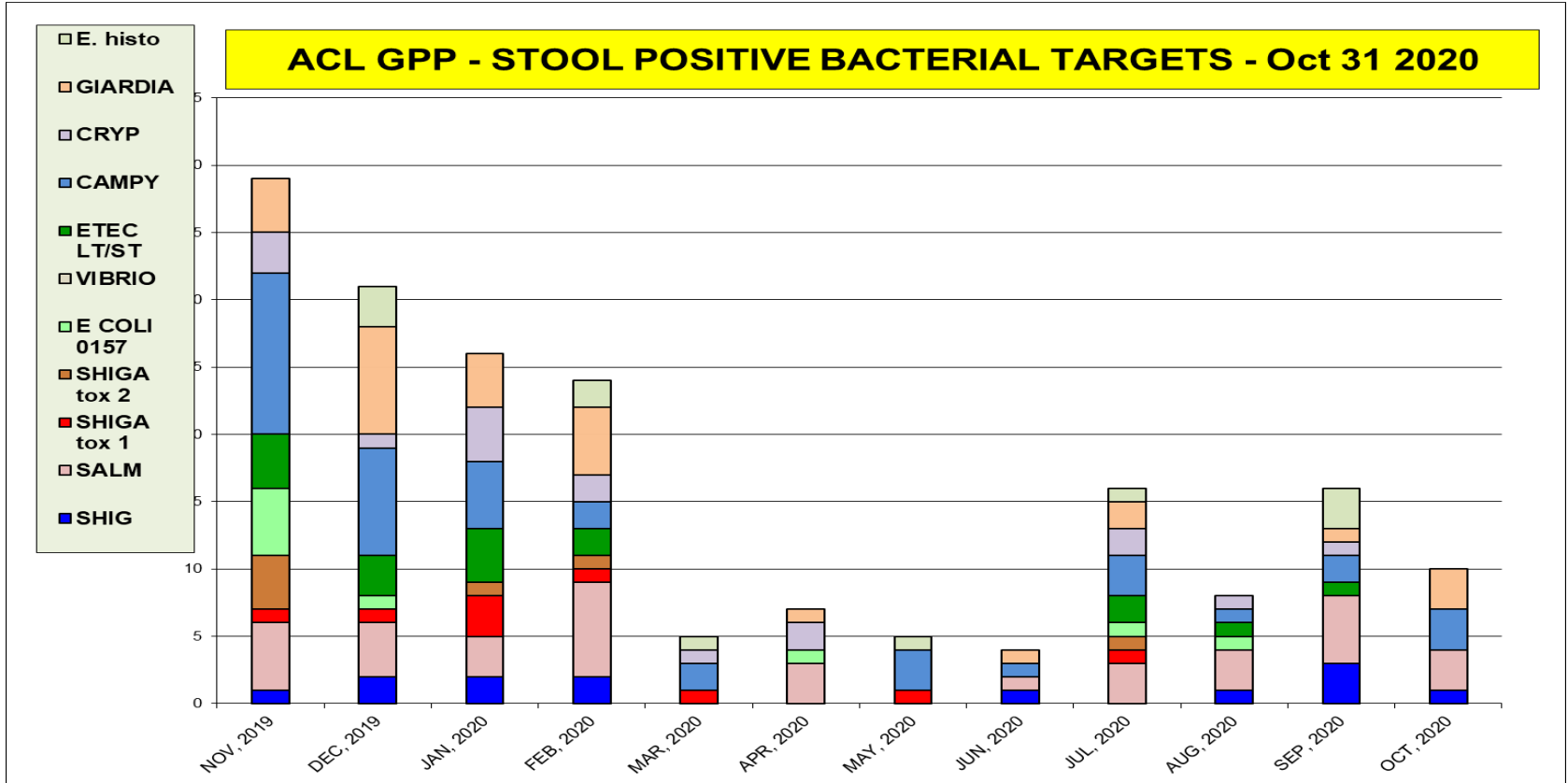
*Data are preliminary and may change as more reports are received.



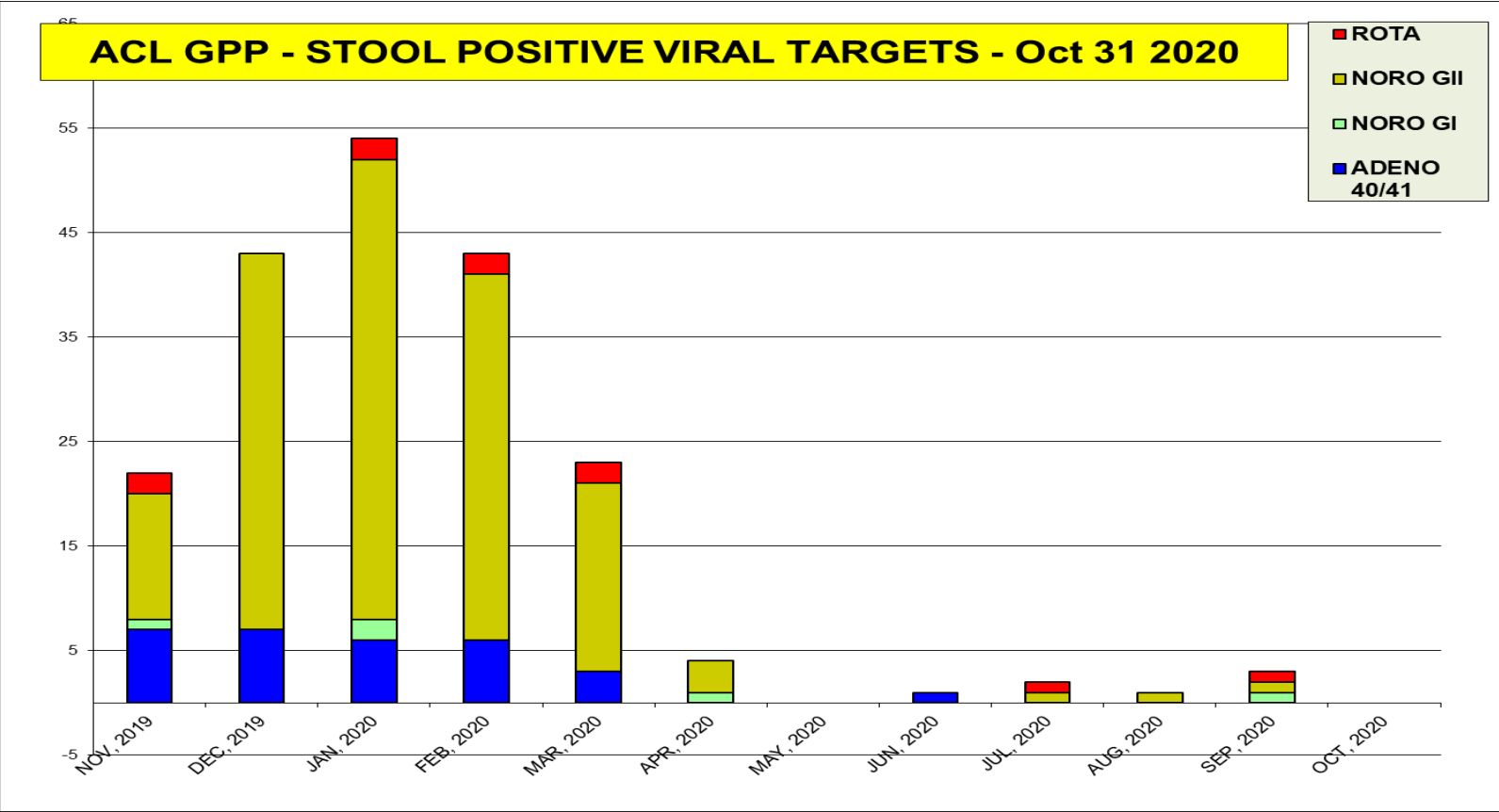
CSF targets pos rate is 3 %



The most prevalent GI bacterial targets (Salmonella and Campy)



The most prevalent GI viral targets - none



Women's Health - Oct 2020 positivity rate (%)

| Bacterial Vag. | Candida spp. | Candida glab. | Trich. vag | M. genitalium |
|----------------|--------------|---------------|------------|---------------|
| 36 | 26 | 2 | 7 | 4 |

