

ACL Laboratories COVID-19 and Influenza Activity Report

Updated: November 21, 2020

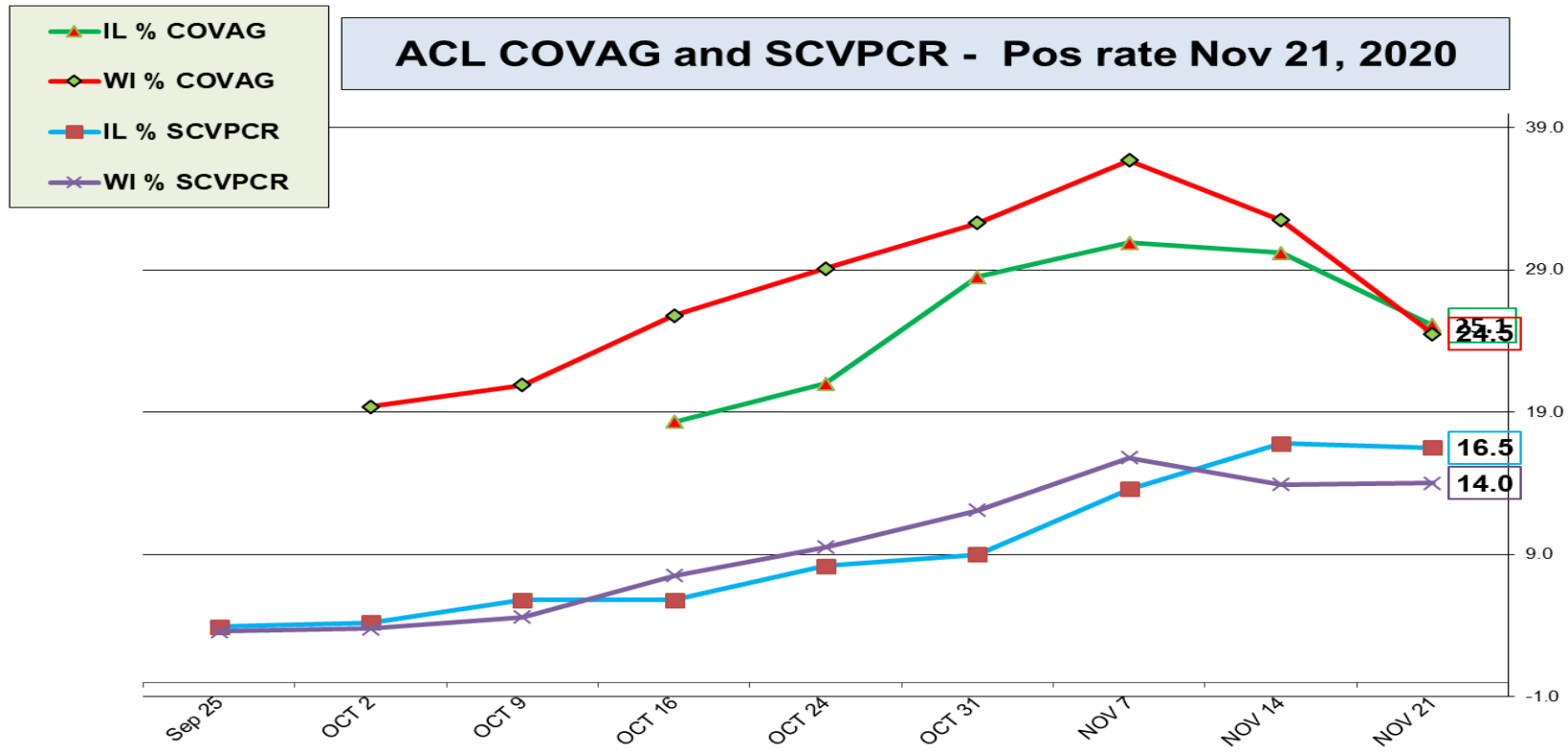


Respiratory Pathogens - Nov 21, 2020

| Week | InfA-H1 | InfA-H3 | 2009 H1N1 | Inf B | RSV | All Para | EV / Rhino | Meta pneumo | Adeno | All Corona | Bocca | Myc. pneumo | Chlam. pneumo. | Leg. pneumo. | BP / BPP | Total Pos | POS FLU | Total | ACL RPPNL | US %FLU | IL/W PCR | ACL FLUPCR |
|--------|---------|---------|-----------|-------|-----|----------|------------|-------------|-------|------------|-------|-------------|----------------|--------------|----------|-----------|---------|-------|-----------|---------|----------|------------|
| Nov 21 | 0 | 0 | 0 | 0 | 0 | 0 | 13 | 1 | 0 | 0 | 0 | 0 | 0 | 0 | 0 | 14 | 0 | 140 | 0.0 | n/a | n/a | 0.0 |
| Nov 14 | 0 | 0 | 0 | 0 | 0 | 0 | 7 | 0 | 0 | 1 | 2 | 0 | 0 | 0 | 0 | 0 | 0 | 158 | 0.0 | 0.2 | 0.1 | 0.0 |
| Nov 7 | 0 | 0 | 0 | 0 | 0 | 0 | 9 | 0 | 0 | 0 | 2 | 0 | 0 | 0 | 0 | 11 | 0 | 96 | 0.0 | 0.2 | 0.2 | 0.0 |
| Oct 31 | 0 | 0 | 0 | 0 | 0 | 0 | 7 | 0 | 0 | 0 | 4 | 0 | 0 | 0 | 0 | 11 | 0 | 233 | 0.0 | 0.1 | 0.2 | 0.0 |
| Oct 23 | 0 | 0 | 0 | 0 | 0 | 0 | 12 | 3 | 2 | 0 | 2 | 0 | 0 | 0 | 0 | 19 | 0 | 173 | 0.0 | 0.2 | 0.4 | 0.0 |
| Oct 16 | 0 | 0 | 0 | 0 | 0 | 0 | 14 | 1 | 1 | 0 | 2 | 0 | 0 | 0 | 0 | 17 | 0 | 185 | 0.0 | 0.3 | 0.2 | 0.0 |
| Oct 9 | 0 | 0 | 0 | 0 | 0 | 0 | 9 | 2 | 0 | 0 | 3 | 0 | 0 | 0 | 0 | 14 | 0 | 64 | 0.0 | 0.3 | 0.3 | 0.0 |
| Oct 2 | 0 | 0 | 0 | 0 | 0 | 0 | 5 | 0 | 0 | 0 | 1 | 0 | 0 | 1 | 0 | 7 | 0 | 65 | 0.0 | 0.3 | 0.2 | 0.0 |
| Sep 25 | 0 | 0 | 0 | 0 | 0 | 0 | 7 | 0 | 2 | 0 | 0 | 0 | 0 | 2 | 0 | 11 | 0 | 111 | 0.0 | 0.3 | 0.0 | 0.0 |
| Sep 19 | 0 | 0 | 0 | 0 | 0 | 0 | 4 | 0 | 0 | 0 | 0 | 0 | 0 | 0 | 0 | 4 | 0 | 28 | 0.0 | 0.4 | 0.3 | 0.0 |
| Sep 12 | 0 | 0 | 0 | 0 | 0 | 0 | 0 | 1 | 0 | 0 | 0 | 0 | 0 | 0 | 0 | 1 | 0 | 58 | 0.0 | 0.2 | 0.0 | 0.0 |
| Sep 4 | 0 | 0 | 0 | 0 | 0 | 0 | 2 | 0 | 0 | 0 | 0 | 0 | 0 | 0 | 0 | 2 | 0 | 146 | 0.0 | 0.2 | 0.5 | 0.0 |

| SARS-COV-2 | | | | | RSV | | | | Influenza | |
|------------|----------------|----------------|---------------|---------------|----------------|----------------|---------------|---------------|----------------|----------------|
| Week | IL % SCVPCR | WI % SCVPCR | IL % COVAG | WI % COVAG | IL % RSVPCR | WI % RSVPCR | IL % RSVAG | WI % RSVAG | IL % FLUPCR | WI % FLUPCR |
| NOV 21 | 16.5 | 14.0 | 25.1 | 24.5 | 0 | 0 | 0 | 0 | 0 | 0 |
| NOV 14 | 16.8 | 13.9 | 30.2 | 32.5 | 0 | 0 | 0 | 0 | 0 | 0 |
| NOV 7 | 13.6 | 15.8 | 30.9 | 36.7 | 0 | 0 | 0 | 0 | 0 | 0 |
| OCT 31 | 9.0 | 12.1 | 28.5 | 32.3 | 0 | 0 | 0 | 0 | 0 | 0 |
| OCT 24 | 8.2 | 9.5 | 21.0 | 29.1 | 0 | 0 | 0 | 0 | 0 | 0 |
| OCT 16 | 5.8 | 7.5 | 18.3 | 25.8 | 0 | 0 | 0 | 0 | 0 | 0 |
| OCT 9 | 5.8 | 4.6 | 14.4 | 20.9 | 0 | 0 | 0 | 0 | 0 | 0 |
| OCT 2 | 4.2 | 3.8 | n/a | 19.4 | 0 | 0 | 0 | 0 | 0 | 0 |
| Sep 25 | 3.9 | 3.6 | n/a | 18.3 | 0 | 0 | 0 | 0 | 0 | 0 |
| Sep 19 | 4.3 | 3.4 | n/a | n/a | 0 | 0 | 0 | 0 | 0 | 0 |
| Sep 12 | 4.7 | 3.7 | n/a | n/a | 0 | 0 | 0 | 0 | 0 | 0 |
| Sep 4 | 4.4 | 3.3 | n/a | n/a | 0 | 0 | 0 | 0 | 0 | 0 |

ACL COVAG and SCVPCR - Pos rate Nov 21, 2020



COVAG Antigen rapid testing – is performed at **Urgent Care** sites.

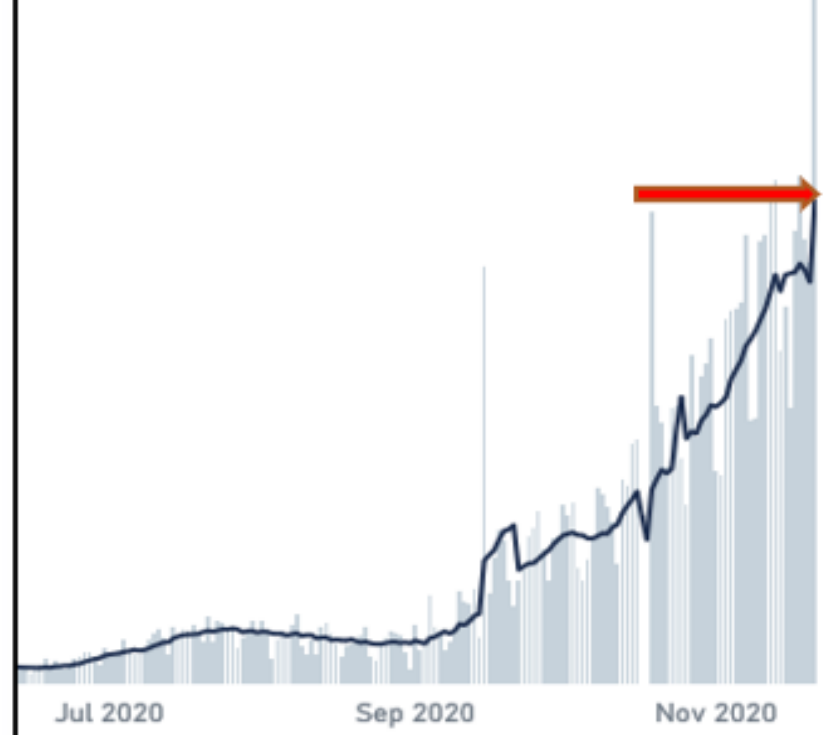
SCVPCR - Rapid PCR - test is performed using Cepheid PCR at AAH **Hospital** sites.

CDC- IL State Covid Cases Nov 21, 2020



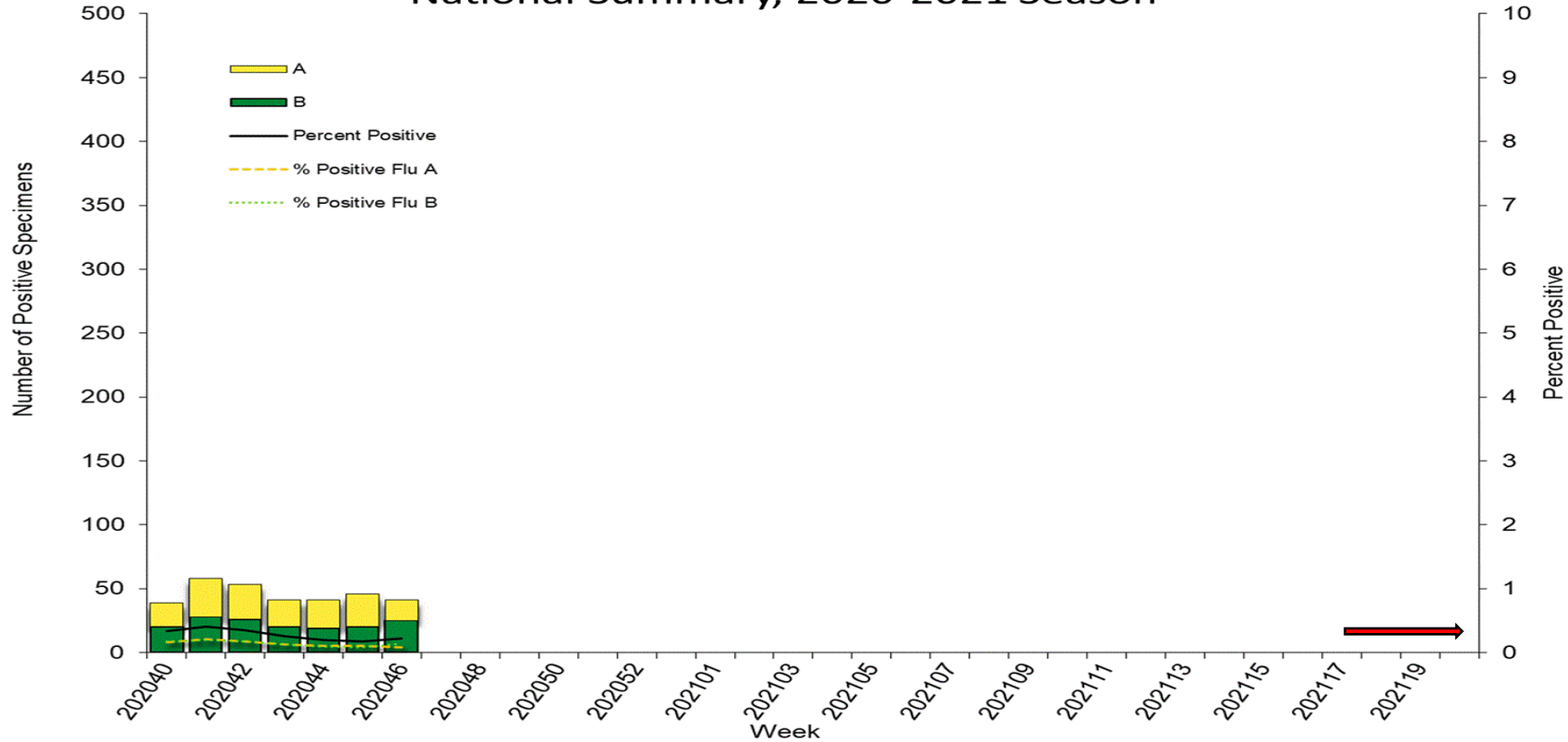
Legend: 7 day moving average of daily cases per 100k people

CDC- WI State Covid Cases Nov 21, 2020



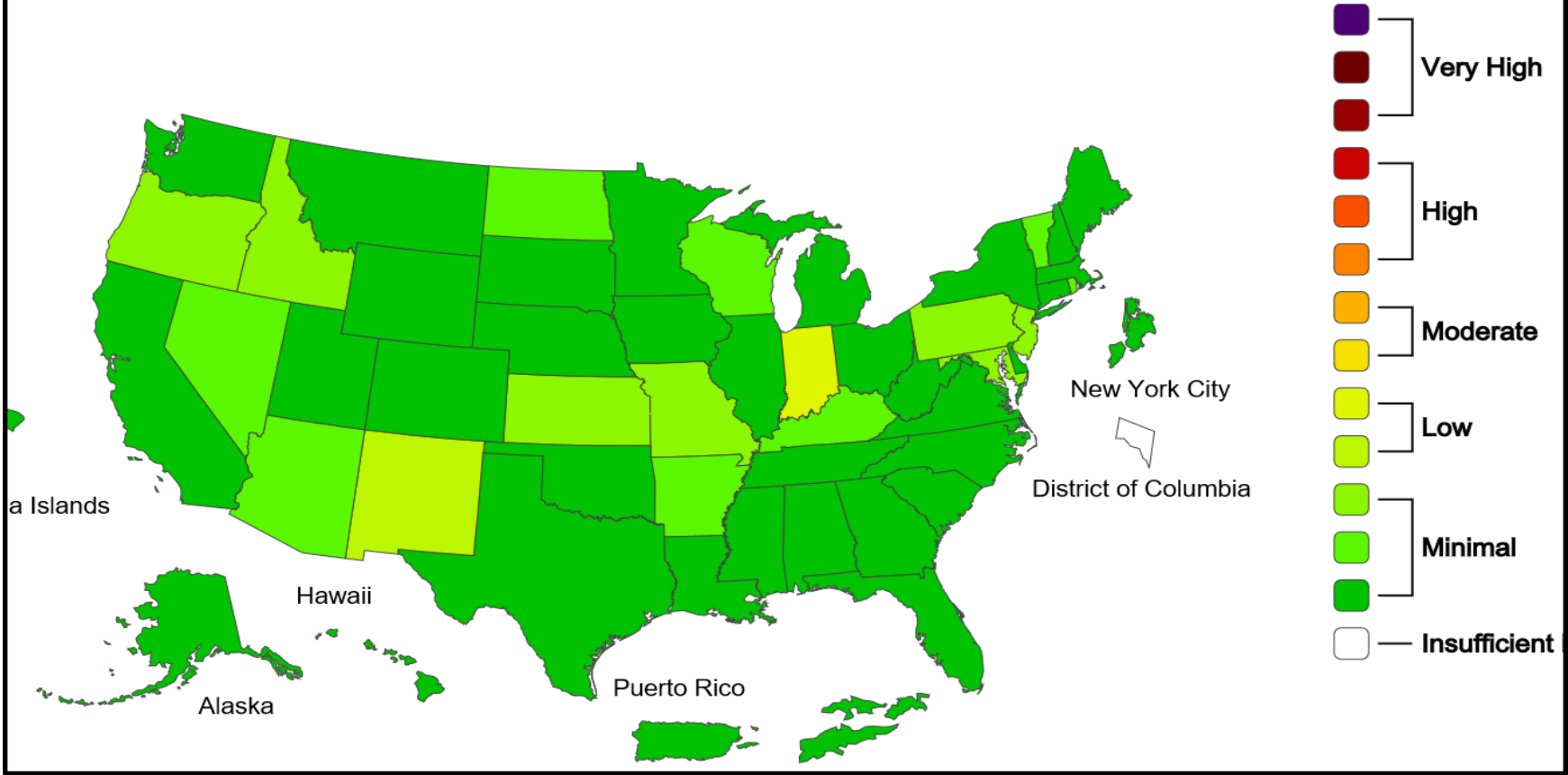
Legend: 7 day moving average of daily cases per 100k people

Influenza Positive Tests Reported to CDC by U.S. Clinical Laboratories, National Summary, 2020-2021 Season

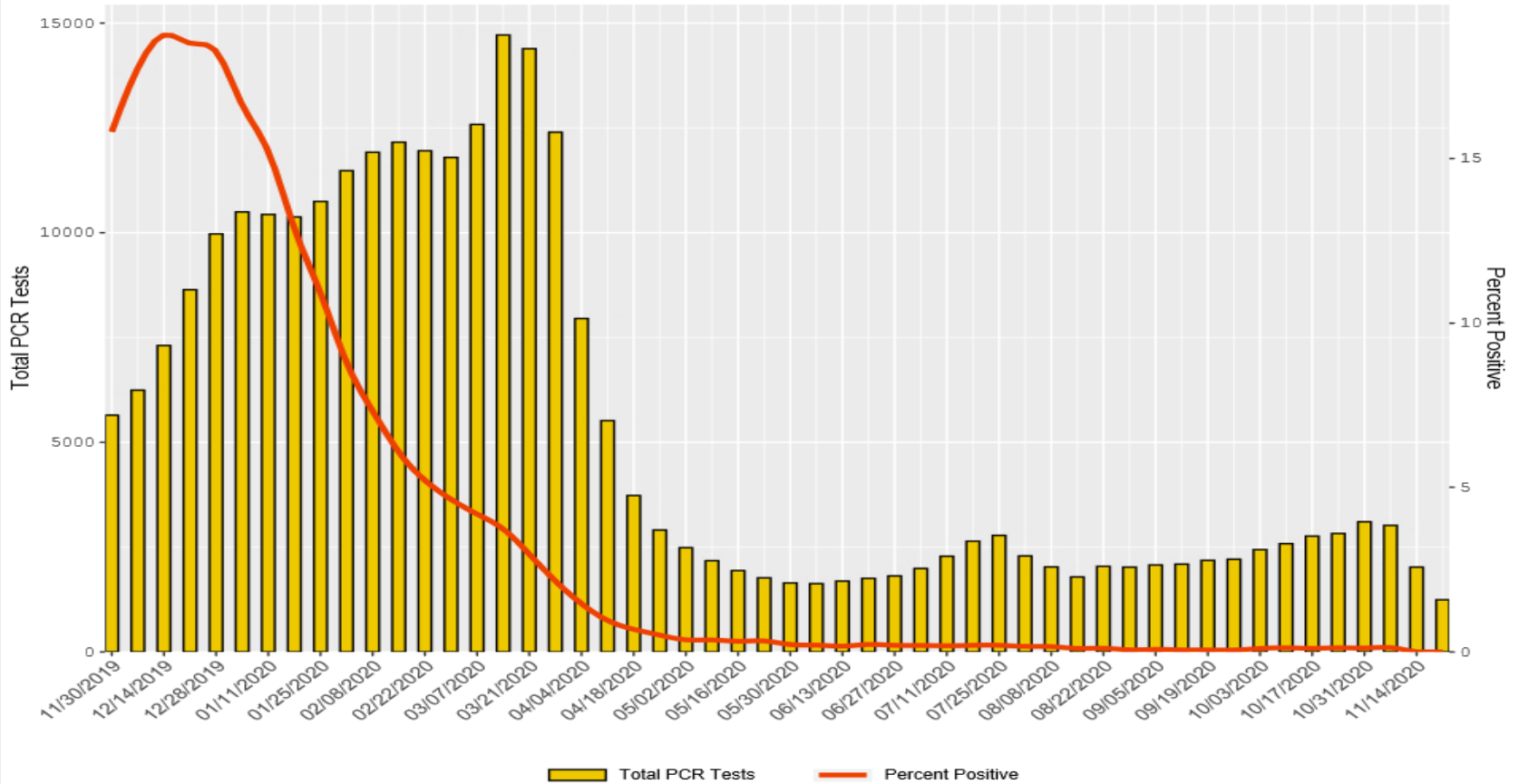


2020-21 Influenza Season Week 46 ending Nov 14, 2020

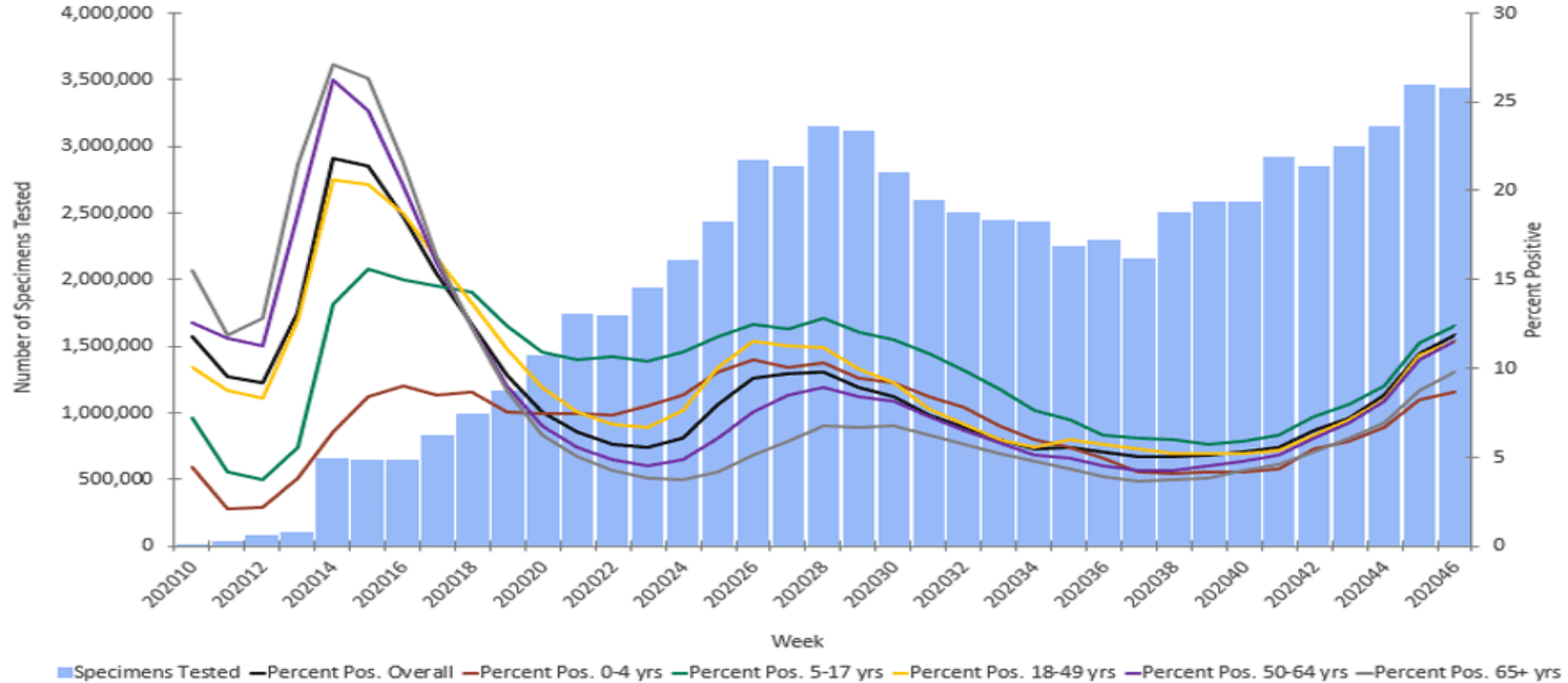
ILI Activity Level



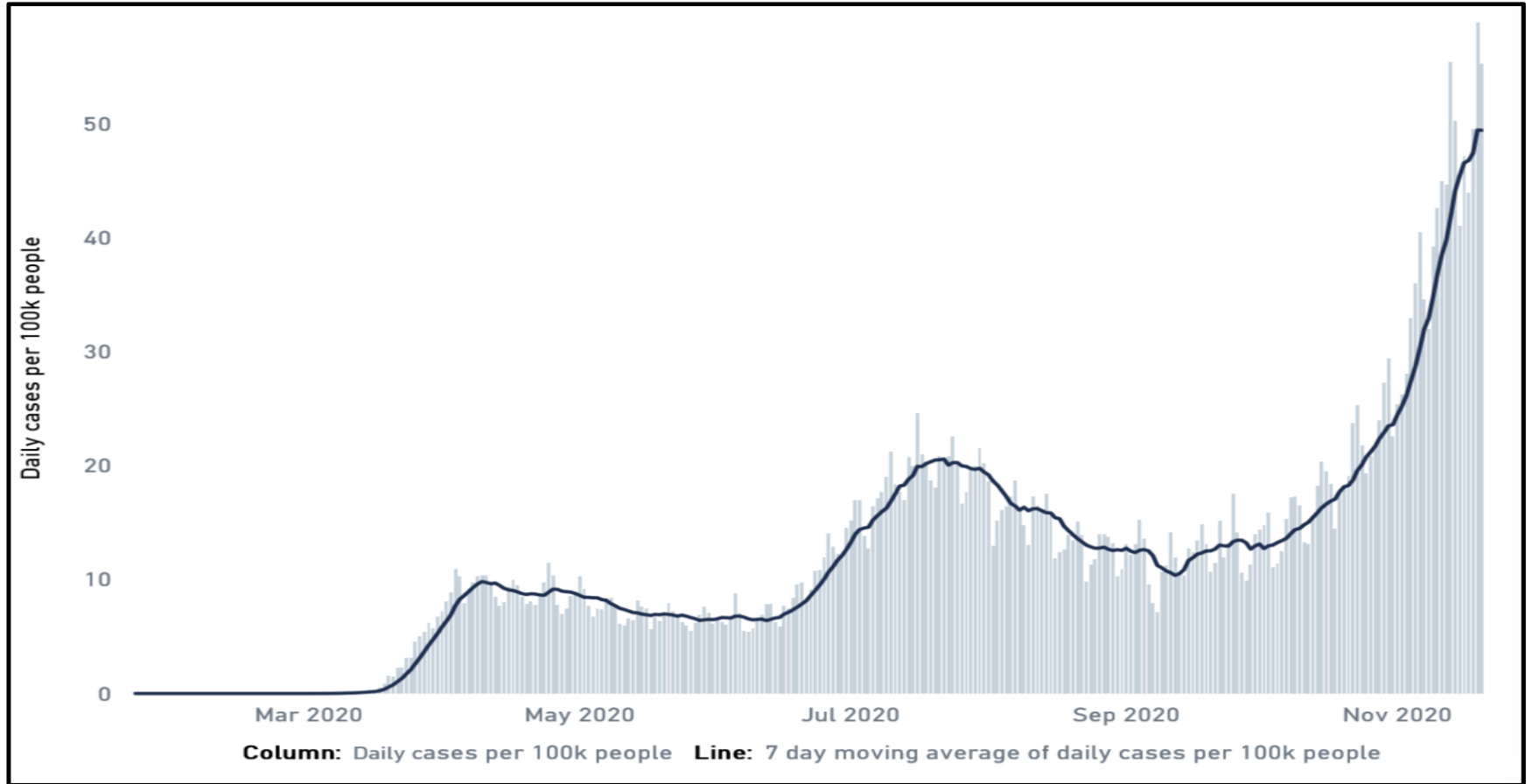
RSV PCR for HHS Region 5 - Chicago (3 week average)



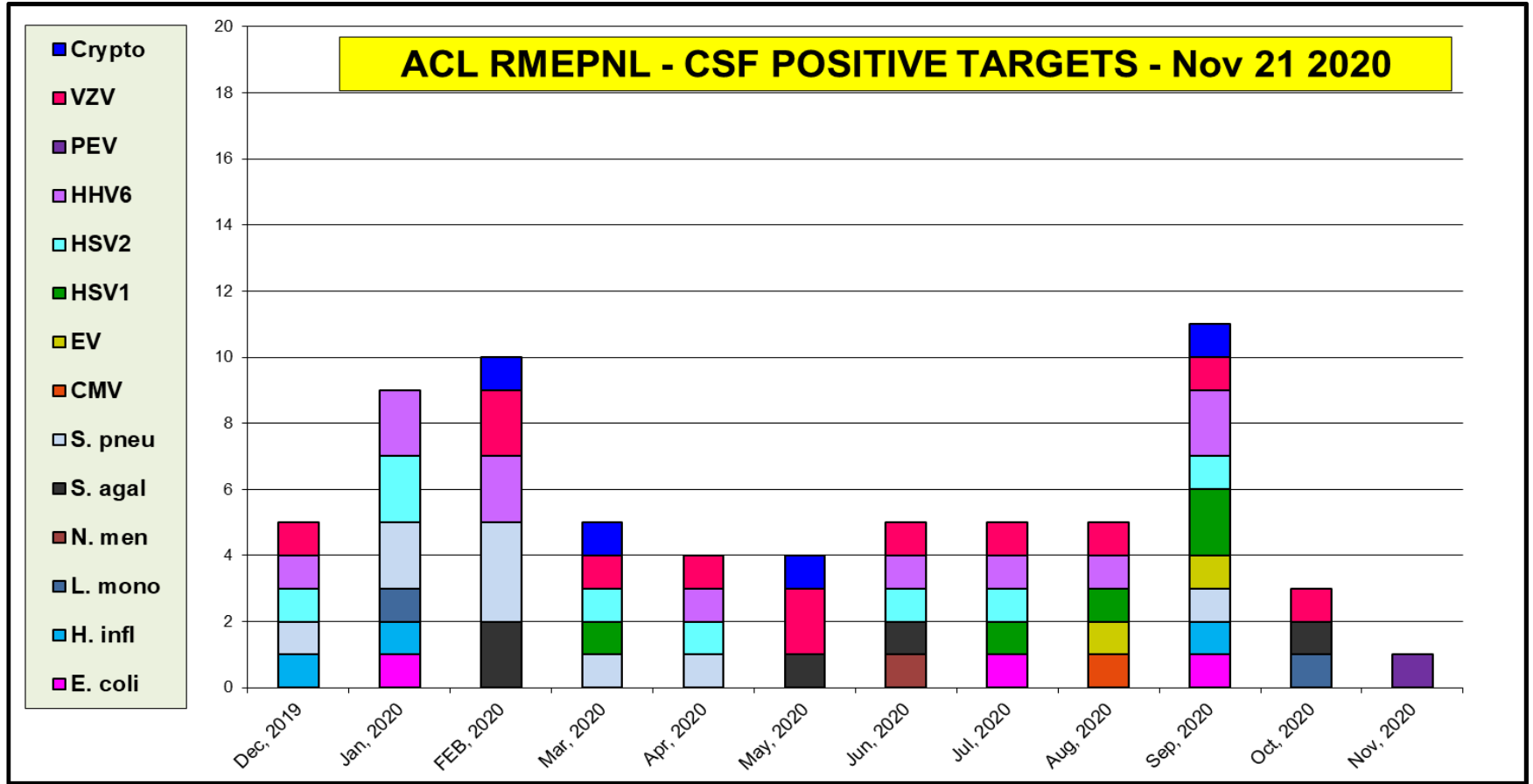
Number of Specimens Tested and Percent Positive for SARS- CoV-2: Combined Laboratories Reporting to CDC (Public Health Laboratories, Subset of Commercial and Clinical Laboratories)
March 1, 2020 – November 14, 2020



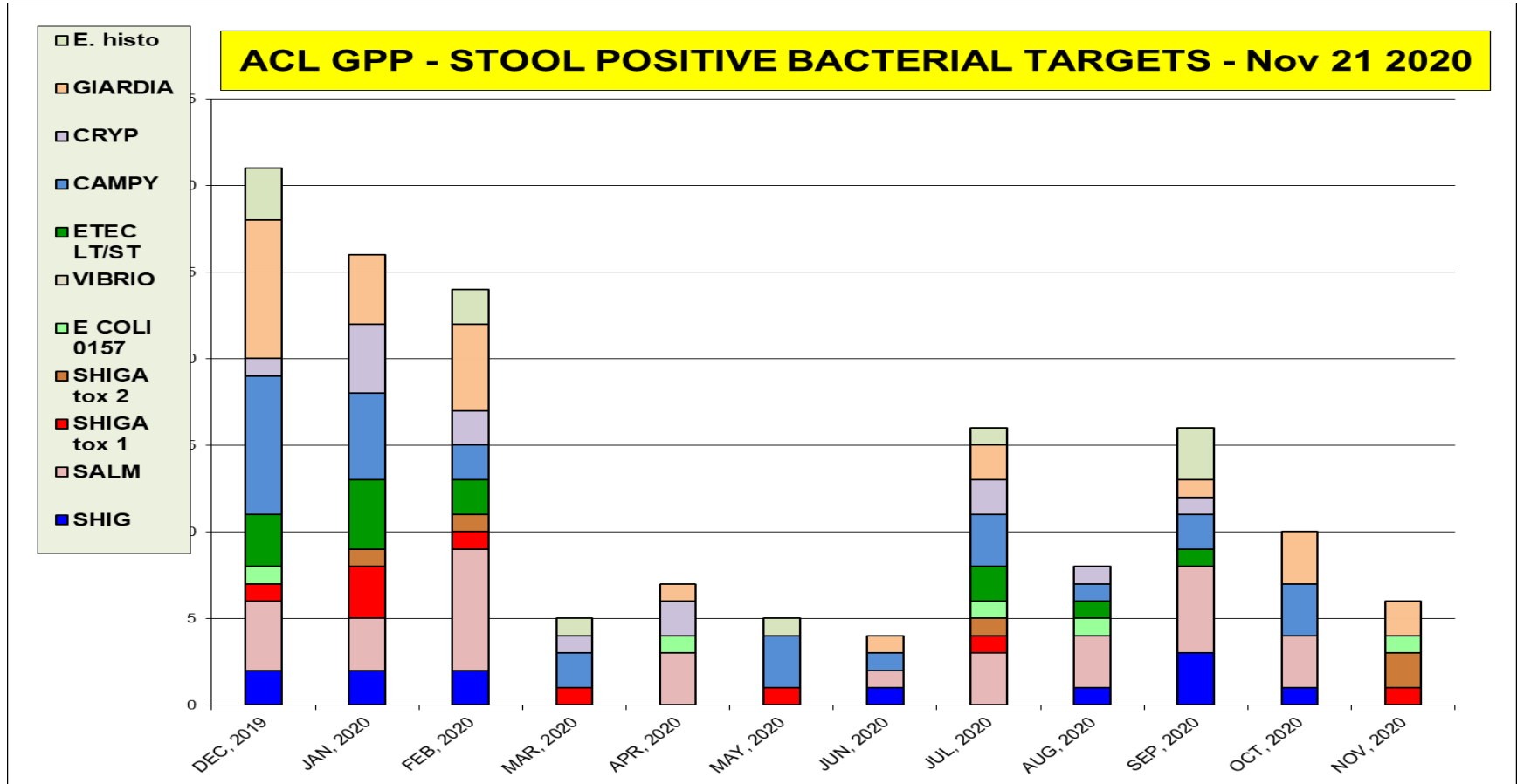
Nov 21st daily COVID-19 cases in US - CDC



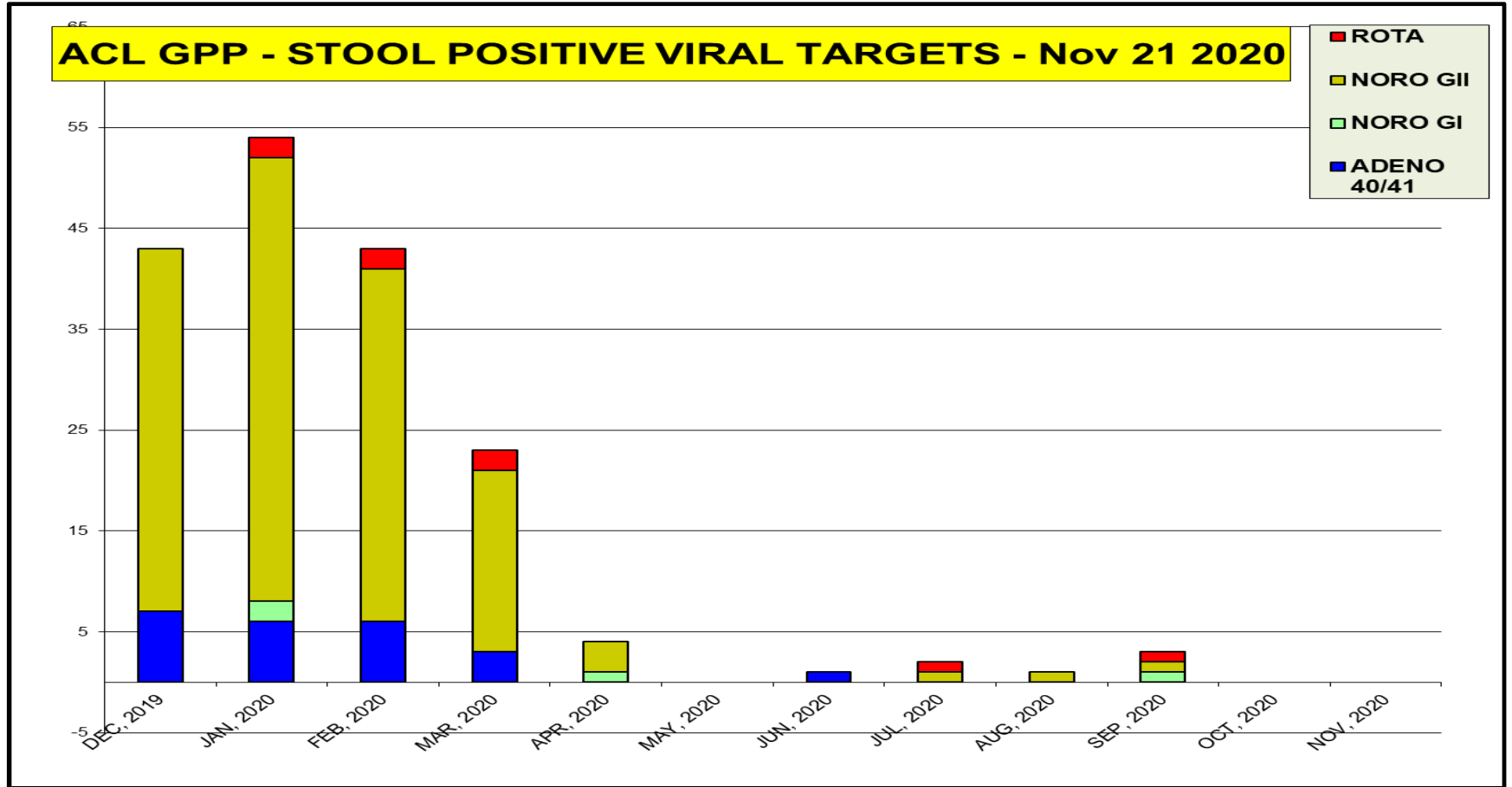
CSF targets positivity rate is 1.5 %



The most prevalent GI bacterial targets (Shigella)



The most prevalent GI viral targets - none



| Women's Health - Nov 21 2020 positivity rate (%) | | | | |
|--|--------------|---------------|------------|---------------|
| Bacterial Vag. | Candida spp. | Candida glab. | Trich. vag | M. genitalium |
| 26 | 18 | 2 | 3 | 6 |

Women Health SwabOne - Prevalence rate (%)

- M. genitalium
- Trich. vag.
- Candida glab.
- Candida spp.
- Bact. Vag.

